

Page Title	Page Number
PUBLICATION INFORMATION	0
DECALS AND LABELS - ORNAMENT POWERSHUTTLE, -> JT	24
DECALS AND LABELS - ORNAMENT DYNAQPS, JT ->	26
DECALS AND LABELS - ORNAMENT POWERSHUTTLE, JT ->	28
DECALS AND LABELS - CONTROL LABELS POWERSHUTTLE, -> JT	30
DECALS AND LABELS - CONTROL LABELS DYNAQPS, JT ->	32
DECALS AND LABELS - CONTROL LABELS POWERSHUTTLE, JT ->	34
DECALS AND LABELS - CAUTION LABELS	36
DECALS AND LABELS - CAUTION LABELS W/O CAB, JT ->	38
DECALS AND LABELS - LABEL CAB, JT ->	40
DECALS AND LABELS - CAUTION LABELS W/CAB, JT ->	42
ENGINE - CYLINDER HEAD -> JT, E4DEVB13, E4DEVB14, E4DEVBA6	44
ENGINE - CYLINDER HEAD JT ->, E4DEWB01, E4DEWB06, E4DEWB05	46
ENGINE - CYLINDER HEAD COVER	48
ENGINE - INLET MANIFOLD	50
ENGINE - EXHAUST MANIFOLD	52
ENGINE - CYLINDER BLOCK -> JT, E4DEVB13, E4DEVB14, E4DEVBA6	54
ENGINE - CYLINDER BLOCK JT ->, E4DEWB01, E4DEWB06, E4DEWB05	56
ENGINE - UNDERSIZE BEARING	58
ENGINE - OIL PAN	60
ENGINE - REAR PLATE	62
ENGINE - TIMING GEAR CASE, E4DEVB13 -> JT	64
ENGINE - TIMING GEAR CASE, -> JT E4DEVB14, E4DEVBA6	68
ENGINE - TIMING GEAR CASE, JT -> E4DEWB01	72
ENGINE - TIMING GEAR CASE, JT -> E4DEWB06	76
ENGINE - TIMING GEAR CASE, JT -> E4DEWB05	80
ENGINE - HANGER	84
ENGINE - ROCKER SHAFT AND VALVES	86
ENGINE - CAMSHAFT	88
ENGINE - PISTON -> JT, E4DEVB13, E4DEVB14, E4DEVBA6	90
ENGINE - PISTON JT ->, E4DEWB01, E4DEWB06, E4DEWB05	92
ENGINE - OVERSIZE PISTON -> JT, E4DEVB13, E4DEVB14, E4DEVBA6	94
ENGINE - OVERSIZE PISTON JT ->, E4DEWB01, E4DEWB06, E4DEWB05	96
ENGINE - CRANKSHAFT -> JT, E4DEVB13, E4DEVB14, E4DEVBA6	98
ENGINE - CRANKSHAFT JT ->, E4DEWB01, E4DEWB06, E4DEWB05	100
ENGINE - OIL PUMP	102
ENGINE - WATER PUMP, -> JT E4DEVB13, E4DEVB14, E4DEVBA6, JT -> E4DEWB01, E4DEWB05	104
ENGINE - WATER PUMP, E4DEWB06 ENG POWERSHUTTLE W/O CAB, JT ->	106
ENGINE - COOLING FAN	108
ENGINE - INJECTION NOZZLE AND PIPES	110
ENGINE - COMPONENTS FOR INJECTION NOZZLE	112
ENGINE - INJECTION PUMP -> JT, E4DEVB13, E4DEVB14, E4DEVBA6	114
ENGINE - COMPONENTS FOR INJECTION PUMP	116
ENGINE - INJECTION PUMP JT ->, E4DEWB01, E4DEWB06, E4DEWB05	118
ENGINE - COMPONENTS FOR INJECTION PUMP	120
ENGINE - FUEL PIPE	122
ENGINE - ADAPTER -> JT, E4DEVB13, E4DEVB14, E4DEVBA6	124
ENGINE - ADAPTER JT ->, E4DEWB01, E4DEWB06, E4DEWB05	126
ENGINE - ALTERNATOR AND STARTER, E4DEVB13, E4DEVB14 -> JT	128
ENGINE - ALTERNATOR AND STARTER, E4DEVBA6 -> JT	130
ENGINE - ALTERNATOR AND STARTER JT ->, E4DEWB01, E4DEWB06, E4DEWB05	132
ENGINE - COMPONENTS FOR ALTERNATOR	134
ENGINE - COMPONENTS FOR STARTER	136
ENGINE - ENGINE SWITCHES -> JT, E4DEVB13, E4DEVB14	138
ENGINE - ENGINE SWITCHES -> JT, E4DEVBA6	140
ENGINE - ENGINE SWITCHES -> JT, E4DEWB01, E4DEWB06, E4DEWB05	142
ENGINE - ENGINE GASKET KIT -> JT, E4DEVB13, E4DEVB14	144
ENGINE - ENGINE GASKET KIT -> JT, E4DEVBA6	146
ENGINE - ENGINE GASKET KIT JT ->, E4DEWB01, E4DEWB06, E4DEWB05	148
ENGINE ATTACHING - RADIATOR, W/O CAB(1/2)	150
ENGINE ATTACHING - RADIATOR, W/O CAB(2/2)	152
ENGINE ATTACHING - RADIATOR, W/O CAB(1/2)JT ->	154
ENGINE ATTACHING - RADIATOR, W/O CAB(2/2)JT ->	156
ENGINE ATTACHING - RADIATOR, W/CAB(1/2)	158
ENGINE ATTACHING - RADIATOR, W/CAB(2/2)	160
ENGINE ATTACHING - RADIATOR, W/CAB(1/2)JT ->	162
ENGINE ATTACHING - RADIATOR JT ->, W/CAB(2/2)	164
ENGINE ATTACHING - MUFFLER -> JT	166

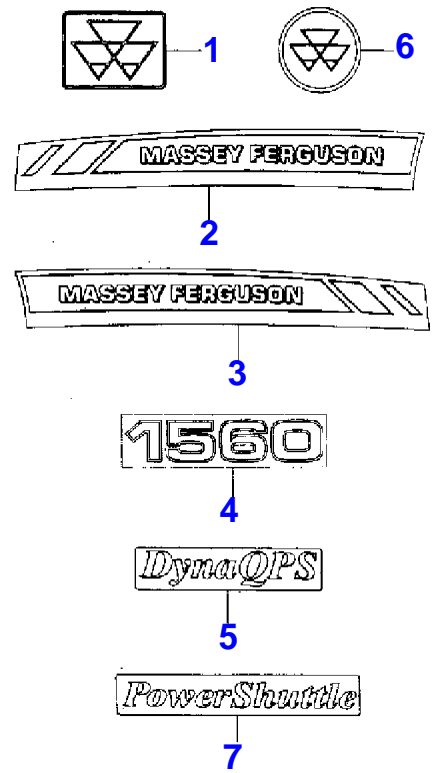
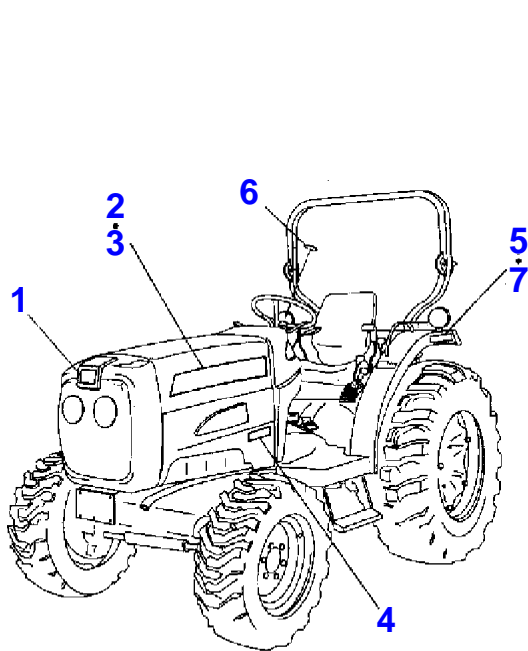
TABLE OF CONTENT

ENGINE ATTACHING - MUFFLER JT ->	168
ENGINE ATTACHING - AIR CLEANER	170
ENGINE ATTACHING - FUEL TANK (1/2)W/O CAB, -> JT	172
ENGINE ATTACHING - FUEL TANK (2/2)W/O CAB, -> JT	174
ENGINE ATTACHING - FUEL TANK (1/2)W/CAB, JT ->	176
ENGINE ATTACHING - FUEL TANK (2/2)W/CAB, JT ->	178
ENGINE ATTACHING - ACCELERATOR	180
ENGINE ATTACHING - MAIN CLUTCH, -> JT	182
ENGINE ATTACHING - MAIN CLUTCH, JT ->	184
ENGINE ATTACHING - COMPONENTS FOR CLUTCH, JT ->	186
ENGINE ATTACHING - CLUTCH PEDAL, -> JT	188
ENGINE ATTACHING - CLUTCH PEDAL, JT ->	190
TRANSMISSION - FRONT TRANSMISSION CASE, -> JT	192
TRANSMISSION - FRONT TRANSMISSION CASE, JT ->	194
TRANSMISSION - REVERSE GEAR, -> JT	196
TRANSMISSION - REVERSE GEAR, JT ->	198
TRANSMISSION - COMPONENTS FOR CLUTCH	200
TRANSMISSION - PTO GEAR	202
TRANSMISSION - COMPONENTS FOR PTO CLUTCH	204
TRANSMISSION - MID TRANSMISSION CASE	206
TRANSMISSION - MAIN GEAR	208
TRANSMISSION - SUB GEAR	210
TRANSMISSION - 4WD GEAR	212
TRANSMISSION - 4WD GEAR POWERSHUTTLE, JT ->	214
TRANSMISSION - 4WD GEAR DYNAQPS, JT ->	216
TRANSMISSION - PTO GEAR	218
TRANSMISSION - REAR TRANSMISSION CASE	220
TRANSMISSION - MAIN SHIFT FORK POWERSHUTTLE	222
TRANSMISSION - MAIN SHIFT FORK DYNAQPS	224
TRANSMISSION - COMPONENTS FOR PUSH CYLINDER	226
TRANSMISSION - SUB SHIFT FORK, -> JT	228
TRANSMISSION - SUB SHIFT FORK POWERSHUTTLE, JT ->	230
TRANSMISSION - SUB SHIFT FORK DYNAQPS, JT ->	232
TRANSMISSION - 4WD SHIFT ARM	234
TRANSMISSION - PTO SHIFT FORK	236
TRANSMISSION - REVERSE LEVER	238
TRANSMISSION - MAIN LEVER POWERSHUTTLE	240
TRANSMISSION - SUB LEVER POWERSHUTTLE	242
TRANSMISSION - LEVER DYNAQPS, -> JT	244
TRANSMISSION - LEVER DYNAQPS, JT ->	246
TRANSMISSION - PTO LEVER,4WD LEVER, -> JT	248
TRANSMISSION - PTO LEVER, JT ->	250
TRANSMISSION - 4WD LEVER, JT ->	252
TRANSMISSION - DRIVE PINION, DIFFERENTIAL, GEAR -> JT	254
TRANSMISSION - DRIVE PINION, JT ->	256
TRANSMISSION - DIFFERENTIAL GEAR, JT ->	258
TRANSMISSION - REAR AXLE HOUSING	260
TRANSMISSION - DIFFERENTIAL LOCK, -> JT	262
TRANSMISSION - DIFFERENTIAL LOCK, W/O CAB JT ->	264
TRANSMISSION - DIFFERENTIAL LOCK, W/CAB JT ->	266
TRANSMISSION - CYLINDER CASE (1/2), W/O JOYSTICK -> JT	268
TRANSMISSION - CYLINDER CASE (2/2), W/O JOYSTICK -> JT	270
TRANSMISSION - CYLINDER CASE (1/2), WITH JOYSTICK JT ->	272
TRANSMISSION - CYLINDER CASE (2/2), WITH JOYSTICK JT ->	274
TRANSMISSION - POSITION MECHANICAL LINK, -> JT	276
TRANSMISSION - POSITION MECHANICAL LINK, JT ->	278
TRANSMISSION - DRAFT MECHANICAL LINK (1/2)	280
TRANSMISSION - DRAFT MECHANICAL LINK (2/2)	282
TRANSMISSION - 3P LINK W/O CAB	284
TRANSMISSION - 3P LINK W/CAB	286
TRANSMISSION - BEVEL LIFT ROD	288
TRANSMISSION - COMPONENTS FOR BEVEL CASE	290
TRANSMISSION - PTO SHIELD COVER	292
TRANSMISSION - FIXED DRAWBAR	294
TRANSMISSION - BRAKE	296
TRANSMISSION - BRAKE PEDAL, PARKING BRAKE, -> JT	298
TRANSMISSION - BRAKE PEDAL, JT ->	300
TRANSMISSION - PARKING BRAKE, JT ->	302
STEERING - STEERING WHEEL	304
-----	---

TABLE OF CONTENT

STEERING - STEERING COLUMN	306
STEERING - POWER STEERING, -> JT	308
STEERING - POWER STEERING, JT ->	310
STEERING - COMPONENTS FOR STEERING CONTROLLER	312
STEERING - FRONT AXLE BRACKET, -> JT	314
STEERING - FRONT AXLE BRACKET, JT ->	316
STEERING - FRONT DRIVE SHAFT	318
STEERING - FRONT BEVEL CASE	320
STEERING - FRONT AXLE HOUSING, -> JT	322
STEERING - FRONT AXLE HOUSING, JT ->	324
STEERING - FRONT GEAR CASE, TIE ROD, -> JT	326
STEERING - FRONT GEAR CASE, JT ->	328
STEERING - TIE ROD, JT ->	330
HYDRAULICS - MAIN HYDRAULIC -> JT (1/2)	332
HYDRAULICS - MAIN HYDRAULIC -> JT (2/2)	334
HYDRAULICS - MAIN HYDRAULIC JT -> (1/2)	336
HYDRAULICS - MAIN HYDRAULIC JT -> (2/2)	338
HYDRAULICS - COMPONENTS FOR CONTROL VALVE	340
HYDRAULICS - SUB HYDRAULIC -> JT (1/3)	342
HYDRAULICS - SUB HYDRAULIC -> JT (2/3)	344
HYDRAULICS - SUB HYDRAULIC -> JT (3/3)	346
HYDRAULICS - SUB HYDRAULIC (1/3), POWERSHUTTLE JT ->	348
HYDRAULICS - SUB HYDRAULIC (2/3), POWERSHUTTLE JT ->	350
HYDRAULICS - SUB HYDRAULIC (3/3), POWERSHUTTLE JT ->	352
HYDRAULICS - SUB HYDRAULIC (1/3), DYNAQPS JT ->	354
HYDRAULICS - SUB HYDRAULIC (2/3), DYNAQPS JT ->	356
HYDRAULICS - SUB HYDRAULIC (3/3), DYNAQPS JT ->	358
HYDRAULICS - COMPONENTS FOR GEAR PUMP	360
HYDRAULICS - COMPONENTS FOR REDUCE VALVE	362
HYDRAULICS - JOY STICK VALVE (1/2), -> JT	364
HYDRAULICS - JOY STICK VALVE (2/2), -> JT	366
HYDRAULICS - JOY STICK VALVE (1/3), JT ->	368
HYDRAULICS - JOY STICK VALVE (2/3), JT ->	370
HYDRAULICS - JOY STICK VALVE (3/3), JT ->	372
HYDRAULICS - COMPONENTS FOR CONTROL VALVE	374
HYDRAULICS - REMOTE 2R VALVE SET, JT ->	376
HYDRAULICS - COMPONENTS FOR CONTROL VALVE, JT ->	378
SHEET METAL, SEAT, PLATFORM AND CAB - HOOD W/CAB, -> JT	380
SHEET METAL, SEAT, PLATFORM AND CAB - HOOD W/O CAB, JT ->	382
SHEET METAL, SEAT, PLATFORM AND CAB - GRILLE	384
SHEET METAL, SEAT, PLATFORM AND CAB - SIDE COVER W/O CAB	386
SHEET METAL, SEAT, PLATFORM AND CAB - SIDE COVER W/CAB	388
SHEET METAL, SEAT, PLATFORM AND CAB - FENDER W/O CAB	390
SHEET METAL, SEAT, PLATFORM AND CAB - LEVER GUIDE	392
SEAT, PLATFORM AND CAB - SEAT W/O CAB	394
SEAT, PLATFORM AND CAB - SEAT W/CAB	396
SEAT, PLATFORM AND CAB - MOUNT W/O CAB	398
SEAT, PLATFORM AND CAB - MOUNT W/CAB	400
SEAT, PLATFORM AND CAB - FRONT FLOOR W/CAB, -> JT	402
SEAT, PLATFORM AND CAB - FRONT FLOOR W/CAB, JT ->	404
SEAT, PLATFORM AND CAB - FRONT FLOOR W/O CAB, -> JT	406
SEAT, PLATFORM AND CAB - FRONT FLOOR W/O CAB, JT ->	408
SEAT, PLATFORM AND CAB - REAR FLOOR W/CAB, -> JT	410
SEAT, PLATFORM AND CAB - REAR FLOOR W/CAB, JT ->	412
SEAT, PLATFORM AND CAB - RH SUB STEP W/O CAB, JT ->	414
SEAT, PLATFORM AND CAB - REAR FLOOR W/O CAB, -> JT	416
SEAT, PLATFORM AND CAB - REAR FLOOR W/O CAB, JT ->	418
SEAT, PLATFORM AND CAB - REAR FRAME W/O CAB, -> JT	420
SEAT, PLATFORM AND CAB - REAR FRAME W/O CAB, JT ->	422
SEAT, PLATFORM AND CAB - ROPS FRAME W/O CAB, JT ->	424
SEAT, PLATFORM AND CAB - CAB ROOF, -> JT	426
SEAT, PLATFORM AND CAB - CAB ROOF, JT ->	428
SEAT, PLATFORM AND CAB - DYNAQPS FRAME, -> JT	430
SEAT, PLATFORM AND CAB - QCY TYPE FRAME, CY TYPE, JT ->	432
SEAT, PLATFORM AND CAB - CAB FENDER, JT ->	434
SEAT, PLATFORM AND CAB - FRAME POWERSHUTTLE, -> JT	436
SEAT, PLATFORM AND CAB - FRAME POWERSHUTTLE, JT ->	438
SEAT, PLATFORM AND CAB - FRONT GLASS W/CAB, JT ->	440
SEAT, PLATFORM AND CAB - DOOR	442
SEAT, PLATFORM AND CAB - DOOR LOCK, -> JT	444

SEAT, PLATFORM AND CAB - DOOR LOCK, JT ->	446
SEAT, PLATFORM AND CAB - SIDE GLASS	448
SEAT, PLATFORM AND CAB - REAR GLASS	450
SEAT, PLATFORM AND CAB - CAB INTERIOR	452
SEAT, PLATFORM AND CAB - ENGINE AIR CONDITIONER, CAB(1/2)	454
SEAT, PLATFORM AND CAB - ENGINE AIR CONDITIONER, CAB(2/2)	456
SEAT, PLATFORM AND CAB - COMPONENTS FOR COMPRESSOR	458
SEAT, PLATFORM AND CAB - CABIN AIR CONDITIONER, CAB(1/2) -> JT	460
SEAT, PLATFORM AND CAB - CABIN AIR CONDITIONER, CAB(2/2) -> JT	462
SEAT, PLATFORM AND CAB - CABIN AIR CONDITIONER, CAB(1/2) JT ->	464
SEAT, PLATFORM AND CAB - CABIN AIR CONDITIONER, CAB(2/2) JT ->	466
SEAT, PLATFORM AND CAB - COMPONENTS FOR AIR CONDITIONER	468
SEAT, PLATFORM AND CAB - COMPONENTS FOR CONTROL PANEL	470
ELECTRICAL - FRONT ELECTRICAL (1/2), -> JT	472
ELECTRICAL - FRONT ELECTRICAL (2/2), -> JT	474
ELECTRICAL - FRONT ELECTRICAL (1/2), POWERSHUTTLE JT ->	476
ELECTRICAL - FRONT ELECTRICAL (2/2), POWERSHUTTLE JT ->	478
ELECTRICAL - FRONT ELECTRICAL (1/2), DYNAQPS JT ->	480
ELECTRICAL - FRONT ELECTRICAL (2/2), DYNAQPS JT ->	482
ELECTRICAL - MAIN ELECTRICAL, POWERSHUTTLE (1/2) -> JT	484
ELECTRICAL - MAIN ELECTRICAL, POWERSHUTTLE (2/2) -> JT	486
ELECTRICAL - MAIN ELECTRICAL, POWERSHUTTLE (1/2) JT ->	488
ELECTRICAL - MAIN ELECTRICAL, POWERSHUTTLE (2/2) JT ->	490
ELECTRICAL - MAIN ELECTRICAL, DYNAQPS (1/2) -> JT	492
ELECTRICAL - MAIN ELECTRICAL, DYNAQPS (2/2) -> JT	494
ELECTRICAL - MAIN ELECTRICAL, DYNAQPS (1/2) JT ->	496
ELECTRICAL - MAIN ELECTRICAL, DYNAQPS (2/2) JT ->	498
ELECTRICAL - MAIN ELECTRICAL, POWERSHUTTLE (1/2) JT ->	500
ELECTRICAL - MAIN ELECTRICAL, POWERSHUTTLE (2/2) JT ->	502
ELECTRICAL - REAR ELECTRICAL, -> JT	504
ELECTRICAL - REAR ELECTRICAL, JT ->	506
ELECTRICAL - INSTRUMENT PANEL POWERSHUTTLE, -> JT	508
ELECTRICAL - INSTRUMENT PANEL POWERSHUTTLE, JT ->	510
ELECTRICAL - INSTRUMENT PANEL DYNAQPS, -> JT	512
ELECTRICAL - INSTRUMENT PANEL DYNAQPS, JT ->	514
ELECTRICAL - COMPONENTS FOR POWERSHUTTLE, INSTRUMENT PANEL JT ->	516
ELECTRICAL - COMPONENTS FOR DYNAQPS INSTRUMENT PANEL, INSTRUMENT PANEL JT ->	518
ELECTRICAL - CAB ELECTRICAL (1/3), -> JT	520
ELECTRICAL - CAB ELECTRICAL CAB (2/3), -> JT	522
ELECTRICAL - CAB ELECTRICAL (3/3), -> JT	524
ELECTRICAL - CAB ELECTRICAL (1/3), JT ->	526
ELECTRICAL - CAB ELECTRICAL (2/3), JT ->	528
ELECTRICAL - CAB ELECTRICAL (3/3), JT ->	530
ELECTRICAL - COMPONENTS FOR WORKING LAMP	532
ELECTRICAL - COMPONENTS FOR WIPER MOTOR	534
ELECTRICAL - DYNAQPS CONTROL ,7P SOCKET, -> JT	536
ELECTRICAL - DYNAQPS CONTROL, 7P SOCKET, JT ->	538
ELECTRICAL - POWERSHUTTLE CONTROL	540
ELECTRICAL - 7P SOCKET, JT ->	542
OPTIONS - SMV BRACKET, MANUAL, -> JT	544
OPTIONS - MANUAL, JT ->	546
OPTIONS - SMV BRACKET, JT ->	548
OPTIONS - BUMPER HITCH	550
OPTIONS - CUT OFF PLUG ASSEMBLY	552
OPTIONS - 2R REMOTE VALVE SET W/O JOYSTICK, JT ->	554
OPTIONS - COMPONENTS FOR CONTROL VALVE	556
OPTIONS - HOOD INSULATOR SET	558
OPTIONS - ELECTRICAL W/CAB, JT ->	560
OPTIONS - CABIN PARTS, -> JT	562
OPTIONS - CABIN PARTS, JT ->	564
OPTIONS - CABIN MIRROR SET	566
WHEELS AND TIRES - 7600720 F9.5-16 6P /HTL/R16.9 R1	568
WHEELS AND TIRES - 7600760 F12X16.5 6P SS/R18.4-24 8P ADJ	570
WHEELS AND TIRES - 7498789 F27X12LL 6P RSL570X648 6PLY GOLF	572
RECOMMENDED STOCK LIST - RECOMMENDED STOCK LIST	574

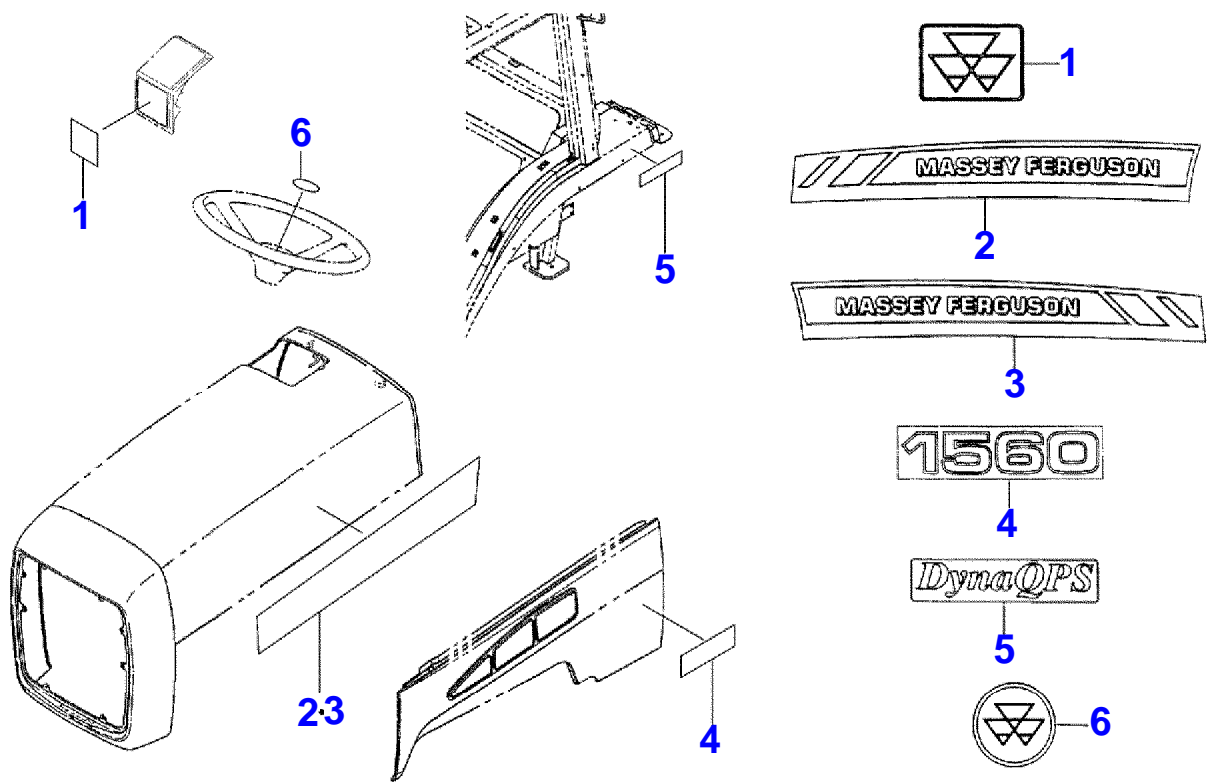


MFC8971

Item	Part Number	Qty	Description
1	6241938M1	1	ORNAMENT, BADGE, MF
2	6242974M1	1	ORNAMENT, MF, LH
3	6242975M1	1	ORNAMENT, MF, RH
4	6252307M1	2	ORNAMENT, 1560
5	6244371M1	2	ORNAMENT, Q, MF
6	6241942M1	1	ORNAMENT, STEERING, MF
7	6242773M1	2	ORNAMENT, POWER SHUTTLE

MFC8971

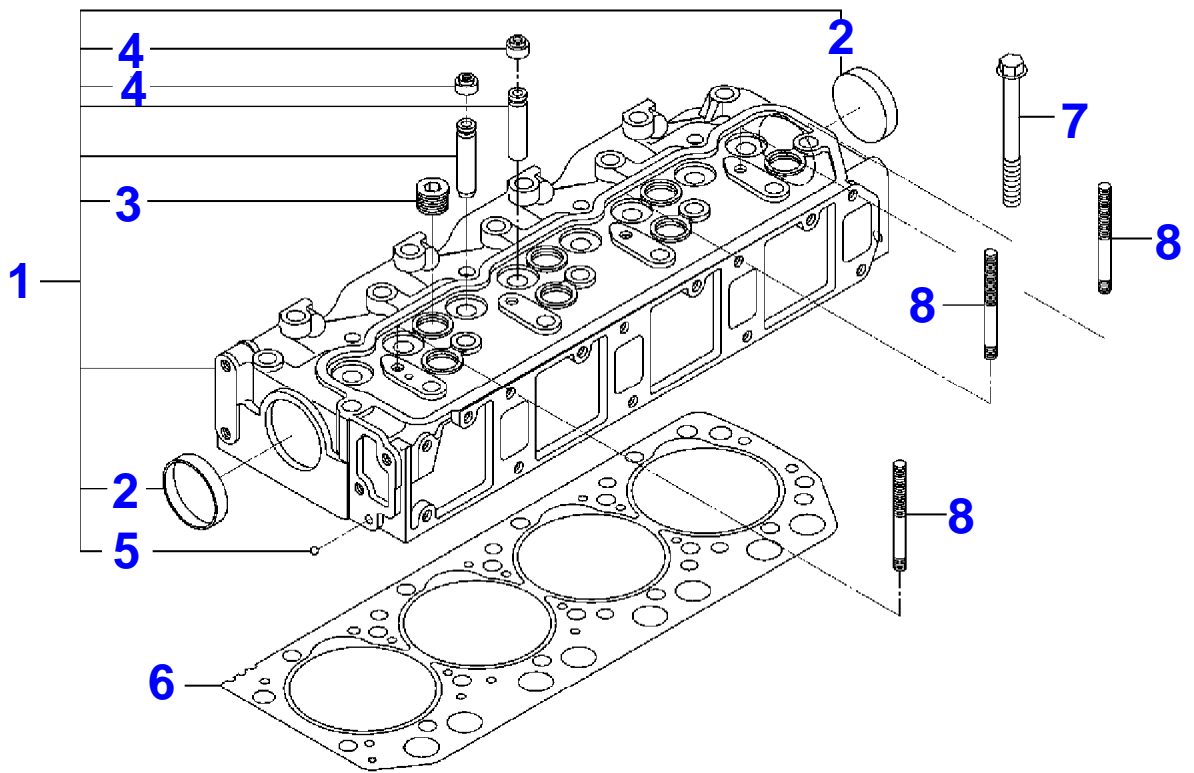
PR: t06c08k27a0001



MFC9410

Item	Part Number	Qty	Description
1	6241938M2	1	ORNAMENT, BADGE, MF
2	6242974M1	1	ORNAMENT, MF, LH
3	6242975M1	1	ORNAMENT, MF, RH
4	6252307M1	2	ORNAMENT, 1560
5	6244371M1	2	ORNAMENT, Q, MF
6	6241942M2	1	ORNAMENT, STEERING, MF

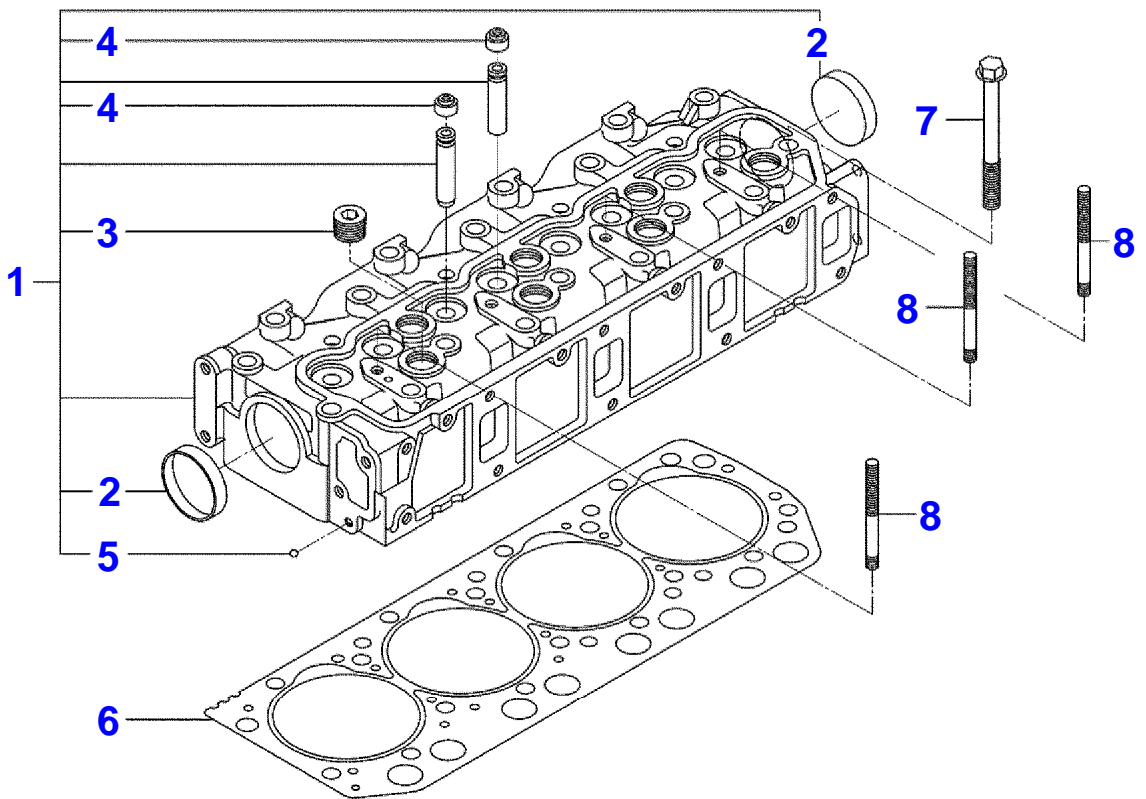
MFC9410
PR: 1759-901-0100



MFC8779

Item	Part Number	Qty	Description
1	4267902M91	1	HEAD ASSY, CYLINDER
2	3710542M1	2	CUP, SEALING, 50
3	3707877M2	7	PLUG, PT1/2
4	3710256M1	8	SEAL, VALVE OIL
5	3711713M1	1	BALL
6	6243037M1	1	GASKET, CYLINDER HEAD
7	4264534M1	18	BOLT
8	3607420M1	3	STUD

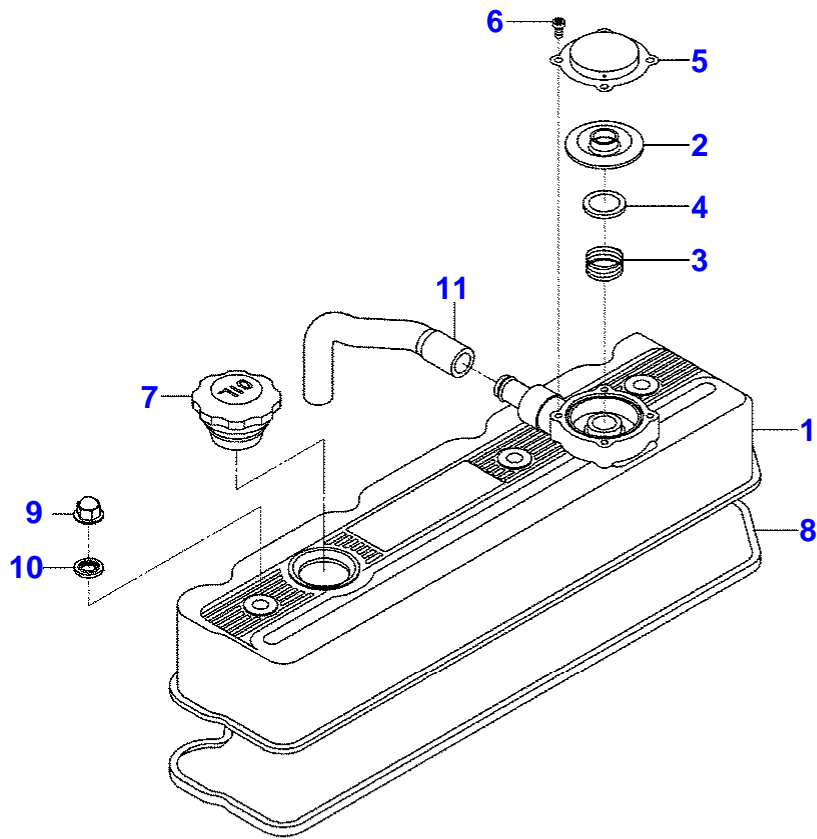
MFC8779
PR: t06c08k27a0004



MFC9318

Item	Part Number	Qty	Description
1	6254495M91	1	HEAD ASSY, CYLINDER
2	3710542M1	2	CUP, SEALING, 50
3	3707877M2	7	PLUG, PT1/2
4	3710256M1	8	SEAL, VALVE OIL
5	3711713M1	1	BALL
6	6243037M1	1	GASKET, CYLINDER HEAD
7	4264534M1	18	BOLT
8	3607420M1	3	STUD

MFC9318
PR: 6006-101R-0100



MFC8780

Buy Now



Our support email:

ebooklibonline@outlook.com