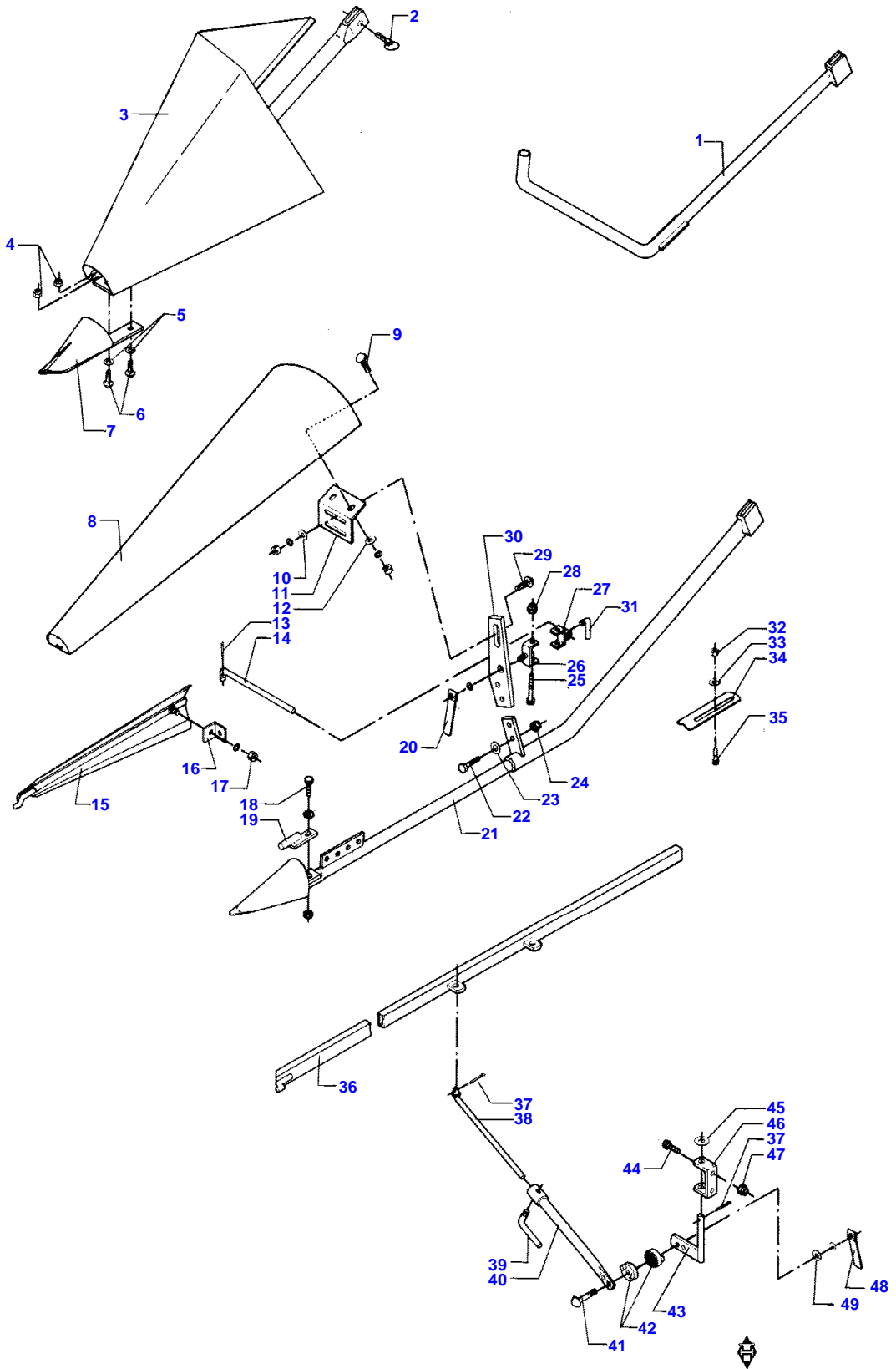


Page Title	Page Number
STRAW DIVIDER	1-1
KNIVES AND FINGERS	1-2
WEARING PLATES AND STONE STOP	1-3
COUNTER SHAFT	1-4
GUARDING	1-5
FEEDER DRUM	1-6
TABLE TRAILER	1-7
LIGHTENING BRACKET AND WHEEL	1-8
SIDE KNIFE	1-9
STRAW DIVIDER	1-10
KNIVES AND FINGERS	1-11
WEARING PLATES AND STONE STOP	1-12
COUNTER SHAFT	1-13
GUARDING	1-14
FEEDER DRUM	1-15
SIDE KNIFE	1-16
TABLE TRAILER	1-17
LIGHTENING BRACKET	1-18
REEL	2-1
REEL SUSPENSION AND ECCENTRIC	2-2
REEL SUSPENSION AND HYDRAULIC CYLINDERS	2-3
REEL SUSPENSION AND HYDRAULIC MOTOR	2-4
REEL	2-5
REEL SUSPENSION AND ECCENTRIC	2-6
REEL SUSPENSION AND HYDRAULIC CYLINDERS	2-7
REEL SUSPENSION AND HYDRAULIC MOTOR	2-8
FEEDER SHAFT, LOWER WITH SUSPENSION	3-1
UPPER FEEDER SHAFT WITH SUSPENSION AND COVER	3-2
FEEDER CHAIN - HYDRAULIC CYLINDER	3-3
TABLE CLUTCH	3-4
TENSION PULLEYS - GUARDING	3-5
TABLE CLUTCH - MAIZE EQUIPMENT	3-6
CONCAVE	4-1
CONCAVE SETTING	4-2
THRESHING DRUM	4-3
DRUM SELECTOR WITH GUARDING	4-4
STONE TRAP AND DRUM COVER	4-5
STRIPPER BEATER WITH SELECTOR	4-6
STRIPPER BEATER WITH PULLEYS	4-7
TENSION ROLLER AT STRIPPER BEATER - TABLE LEVER	4-8
STRAW SHAKER AND CRANKS	5-1
CHECK FLAPS	5-2
MAIN FAN HOUSING 1	6-1
MAIN FAN HOUSING 2-GUARDING	6-2
MAIN FAN BLADES, GRAIN AUGER AND RETURN AUGER	6-3
MAIN FAN SELECTOR	6-4
CONVEYOR PAN WITH SUSPENSION	6-5
CLEANING UNIT DRIVE	6-6
CLEANING UNIT WITH SUSPENSION	6-7
SIEVES	6-8
GRAIN ELEVATOR 1	7-1
GRAIN ELEVATOR 2 WITH CHAIN AND BOTTOM PART	7-2
FILLING ELEVATOR WITH CHAIN	7-3
FILLING ELEVATOR WITH BOTTOM PART	7-4
COUNTERSHAFT - FILLING ELEVATOR	7-5
COUNTERSHAFT WITH SPROCKET AND COUPLING	7-6
RETURN ELEVATOR	7-7
CHANNEL F. RETURN MATERIAL - BOTTOM FLAP	7-8
UPPER RETURN AUGER	7-9
SECOND CLEANER WITH DE-AWNER	8-1
SECOND CLEANER WITH FAN	8-2
SECOND CLEANER-MAIZE EQUIPMENT	8-3
GRAIN TANK TOP	9-1
GRAIN TANK - TRANSMISSION FILLING AUGER	9-2
DISCHARGE AUGER CLUTCH 1	9-3
DISCHARGE AUGER CLUTCH 2	9-4

TABLE OF CONTENT

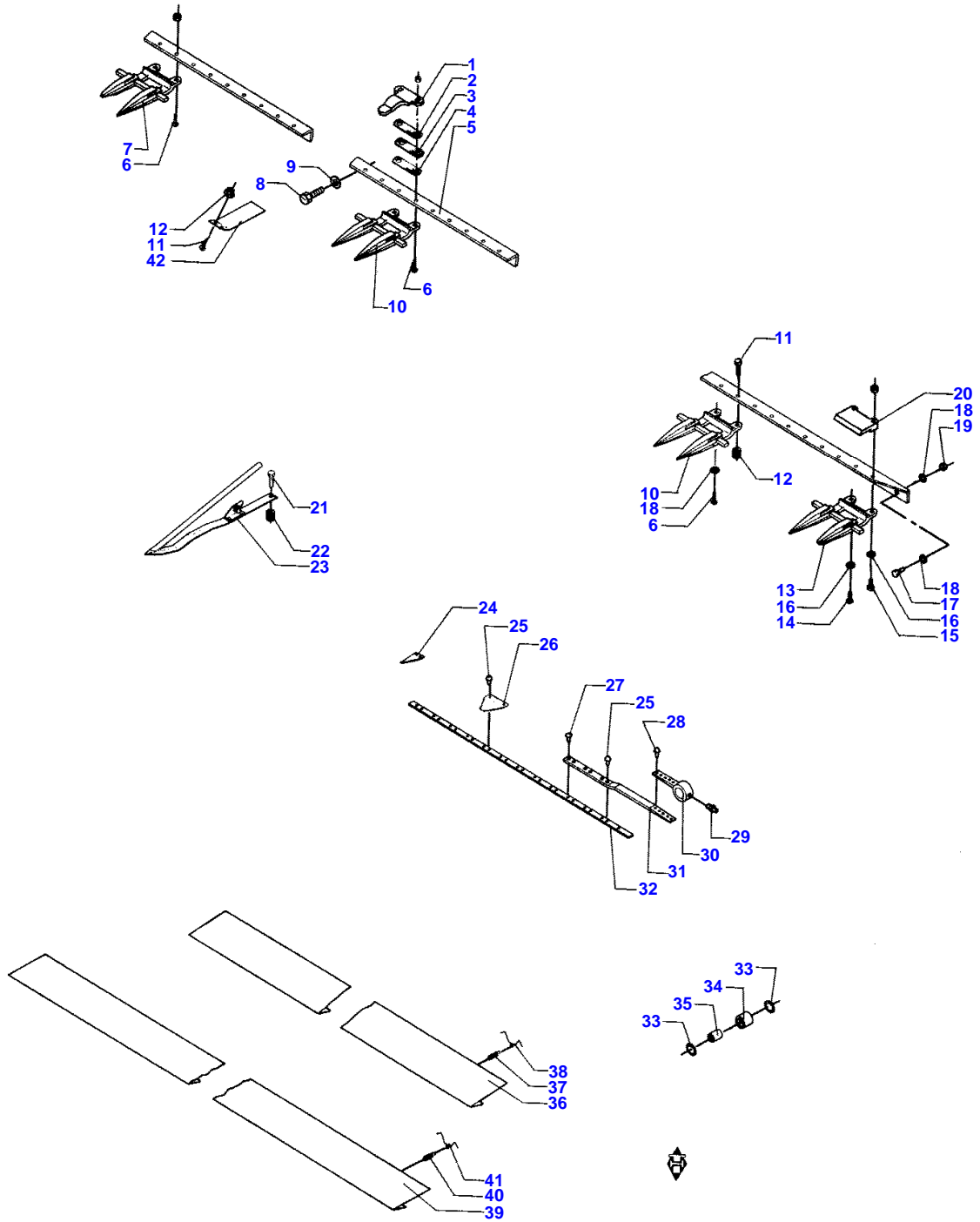
DISCHARGE AUGER, FIXED PART	9-5
DISCHARGE AUGER, SWIVEL PART	9-6
SUCTION CHANNEL AND HYDRAULIC COOLER-PERKINS	10-1
RADIATOR HOSES AND CABLES-PERKINS	10-2
AIR CLEANER-PERKINS	10-3
STRAINER-PERKINS	10-4
REAR ENGINE BRACKET WITH PROPULSION PUMP-PERKINS	10-5
COUPLING OF THRESHING MECHANISM-PERKINS	10-6
SILENCER AND HOSES-PERKINS	10-7
P.T.O. AND HYDRAULIC PUMP-PERKINS	10-8
FUEL TANK AND BRACKET	10-9
COVER FOR ENGINE COMPARTMENT - OIL TANK - PERKINS	10-10
SUCTION CHANNEL AND HYDRAULIC COOLER-TYPE 411 DSL	10-11
RADIATOR-ENGINE BRACKET-TYPE 411 DSL	10-12
AIR CLEANER-TYPE 411 DSL	10-13
STRAINER-TYPE 411 DSL	10-14
SILENCER AND CABLES-TYPE 411 DSL	10-15
ENGAGEMENT OF THRESER - TYPE 411 DSL	10-16
PROPULSION PUMP-TYPE 411 DSL	10-17
P.T.O. AND HYDRAULIC PUMP-TYPE 411 DSL	10-18
COVER FOR ENGINE COMPARTMENT-OIL TANK-TYPE 411 DSL	10-19
BELT MOUNTING	11-1
FRONT AXLE WITH HYDRO MOTOR	12-1
GEARBOX AND CABLES	12-2
FRONT AXLE WITH SIDE PINIONS AND WHEELS	12-3
REAR AXLE	12-4
STEERING WHEEL AND STEERING CYLINDER	12-5
GEAR BOX 1	12-6
GEAR BOX 2	12-7
GEAR BOX 3	12-8
SIDE PINIONS	12-9
PLATFORM, RIGHT-INDICATOR PIN	13-1
HANDRAIL - SUN ROOF	13-2
LADDER-PLATFORM, LEFT	13-3
BRAKE PEDALS AND BRAKE CABLES	13-4
OPERATOR SEAT AND STEERING WHEEL ARRANGEMENT	13-5
OPERATING LEVERS	13-6
CONTROL BOX	13-7
INSTRUMENT BOX	13-8
OPERATING LEVERS - CONNECTING SHAFT	13-9
CONTROL BOX WITH CABLES	13-10
CAB ROOF	13-11
OPERATOR CABIN	13-12
WINDOW PANES	13-13
STEERING CYLINDER - HYDRAULIC CYLINDER 1	14-1A
STEERING CYLINDER - HYDRAULIC CYLINDER 2	14-1B
HYDRAULIC CHART	14-2
HYDRAULIC TABLE 1	14-3A
HYDRAULIC TABLE 2	14-3B
PROPULSION HYDRAULIC F.46105	14-4A
PROPULSION HYDRAULIC T.46024	14-4B
GUARD REAR, RIGHT - ACCUMULATOR	15-1
GUARDING, RIGHT SIDE	15-2
GUARDING, LEFT SIDE	15-3
STRAW NOSE - WIND GUARDING - STRAW GUIDE	15-4
REAR MACHINE HOUSING	15-5
TOOLS - PAINT	16-1
WIRING	16-2
WIRING	16-2A
WIRING	16-2B
WIRING GRAIN LOSS MONITOR	16-3
STRAW CHOPPER 1	17-1
ACCESSORIES	17-2
STRAW CHOPPER REKORD	17-3
ACCESSORIES REKORD	17-4
STRAW CHOPPER 2	17-5
ACCESSORIES - STRAW CHOPPER 2	17-6
SPREADER HOOD - STRAW CHOPPER 2	17-7





STRAW DIVIDER

Item	Part Number	Qty	Description	Comments
1	D28260161	2	Divider	
2	D41447300	2	Split Ring	
3	D28260220	1	Divider	
	D28260224	1	Divider	
4	D41087600	4	Locknut	
5	D20400471	4	Washer	
6	D40066800	4	Screw Metric	
7	D28260226	2	Point	
	D28260523	1	Divider	(F0) POS. 8-31 Length (F1) POS. 8-31
	D28260524	1	Divider	
8	D28211126	1	Divider	
9	D40063700	2	Screw	
10	D20400471	2	Washer	
11	D28230447	1	Plate	
12	D20400409	2	Washer	
13	D41408700	1	SPLIT PIN	
14	D28230462	1	Rod	
15	D28230457	1	Wing	
16	D27200313	1	Angle	
17	D41010800	1	Nut Metric	
18	D40407900	1	Screw Metric	
19	D27200640	1	Stop	
20	D27300323	1	Locknut	
21	D28260525	1	Support	
22	D40405000	2	Screw Metric	
23	D20400409	2	Washer	
24	D41013500	2	Nut	
	D28230467	1	Mounting	POS. 25-28
25	D40424400	1	HEXAGON SCREW	
26	D28230468	1	Mounting	
27	D28230471	1	Mounting	
28	D41087500	1	Locknut	
29	D40066700	2	Screw	
30	D28250549	1	Plate	
31	D27200300	1	Pin	
32	D41087700	2	Locknut	
33	D20400426	2	Washer	
34	D28230453	2	Plate	
35	D40070200	2	Screw Metric	
	D28230487	2	Wing	POS. 36-49
36	D28230480	1	Wing	
37	D41410600	2	SPLIT PIN	
38	D28230482	1	Support	
39	D27200364	1	Handle	
40	D28230486	1	Pipe	
41	D40021300	1	Screw	
42	D28230488	2	Clutch	
43	D28230473	1	Support	
44	D40407700	2	Screw	
45	D20400518	1	Spacer	
46	D28230472	1	Bracket	
47	D41087600	2	Locknut	
48	D27300323	1	Locknut	
49	D20400426	1	Washer	(F0) ON THE RIGHT (F1) ON THE LEFT



KNIVES AND FINGERS

Item	Part Number	Qty	Description	Comments
1	D25200899	10	Clip	(U1)
	D25200899	11	Clip	(U2)
2	D28210349		Shim	
3	D28210350		Shim	
4	D28230292		Shim	
5	D28260238	1	Bar	12'
	D28260266	1	Bar	10.5'
	D28270146	1	Bar	14'
6	D40551600		Bolt	
7	D28260531	1	Finger	
8	D40407800		HEXAGON SCREW	
9	D20400419		Washer	
10	D44102900	20	Finger	(U1)
	D44102900	23	Finger	(U2)
11	D40425800		Screw	
12	D28230833		Nut	
13	D28260535	1	Finger	
14	D40551500		Bolt	
15	D40067200	2	Screw	
16	D20400419		Washer	
17	D40411100	3	HEXAGON SCREW	
18	D20400426	6	Washer	
19	D41087700	3	Locknut	
20	D28260362	1	Clip	
21	D40425800		Screw	
22	D28230833		Nut	
23	D49040000	12	Ear Lifter	(U1)
	D49040000	14	Ear Lifter	(E2)
	D28260187	1	Knife	POS. 24-32 10,5'
	D28260188	1	Knife	POS. 24-32 12'
	D28260267	1	Blade	POS. 24-35 10,5'
	D28260388	1	Blade	POS. 24-35 12'
	D28270150	1	Knife	POS. 24-32 14'
	D28270151	1	Knife	POS. 24-35 14'
24	D44103400	1	Blade	
25	D41377500		Rivet	
26	D44100000	46	Section	(U1)
	D44100000	49	Section	(U2)
	D44100000	57	Section	(T7)
27	D41378900	4	Rivet	
28	D41377800	7	Rivet	
29	D43001500	1	Greaser	
30	D28260054	1	Knife Head	
31	D28260053	1	Spring	
32	D28260194	1	Knife Back	12'
	D28260262	1	Knife Back	10,5'
	D28270149	1	Knife Back	14'
33	D45418900	4	Seal	
34	D41665900	2	Bush	
35	D28260055	2	Bush	
36	D28230843	1	Guard	(U1) POS. 37-38
37	D26500317	2	Spring	
38	D28230841	2	Spring	
39	D28230842	1	Guard	(E2) POS. 40-41
	D28230845	1	Guard	(U1) POS. 40-41
40	D26500317	2	Spring	
41	D28230841	2	Spring	(E2) 10,5' - 12' (T7) 14' (U1) 10,5' (U2)

MASSEY FERGUSON

MF 24 COMBINE - 819723

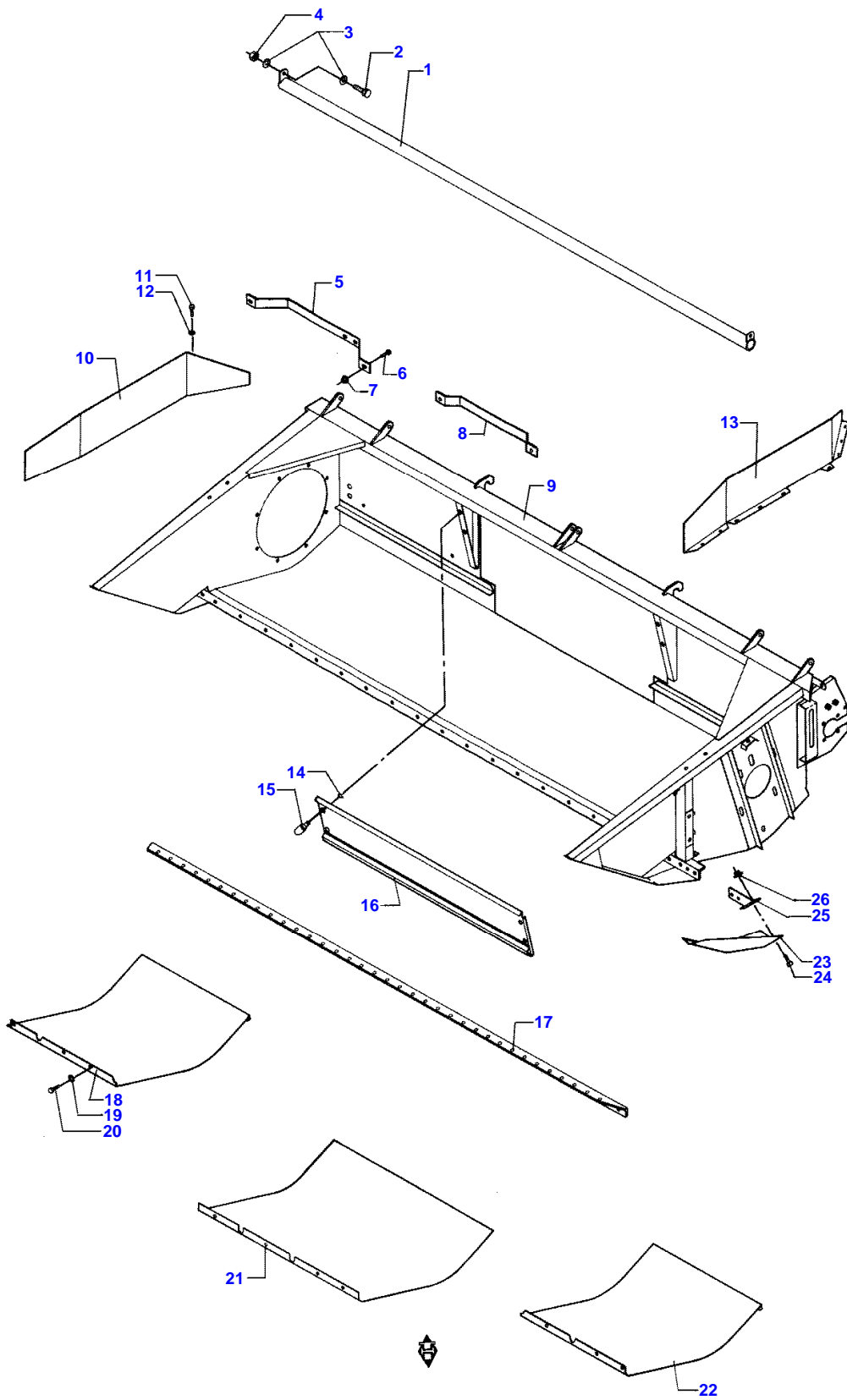
819723

KNIVES AND FINGERS

1-2

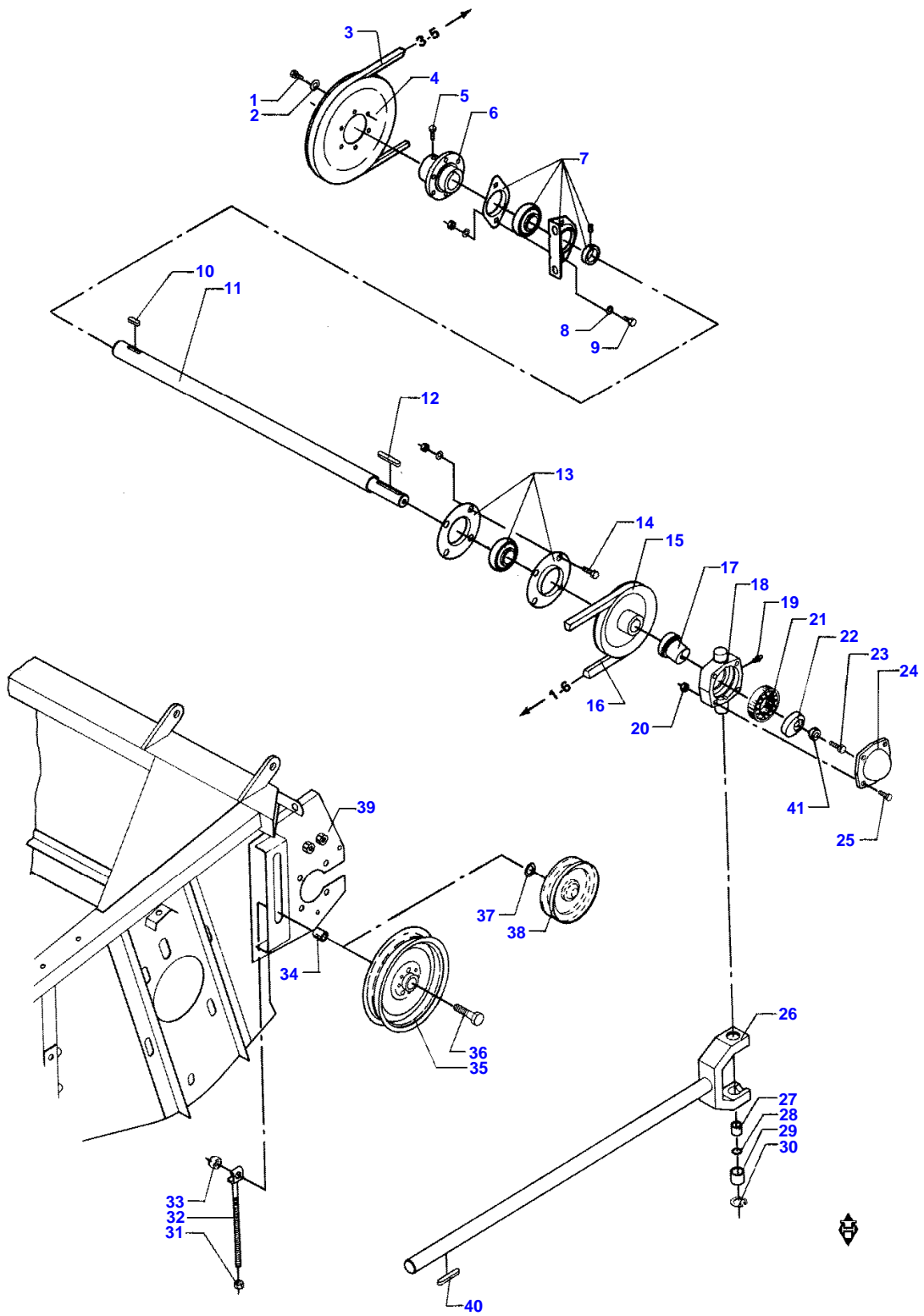
Item	Part Number	Qty	Description	Comments
				12'





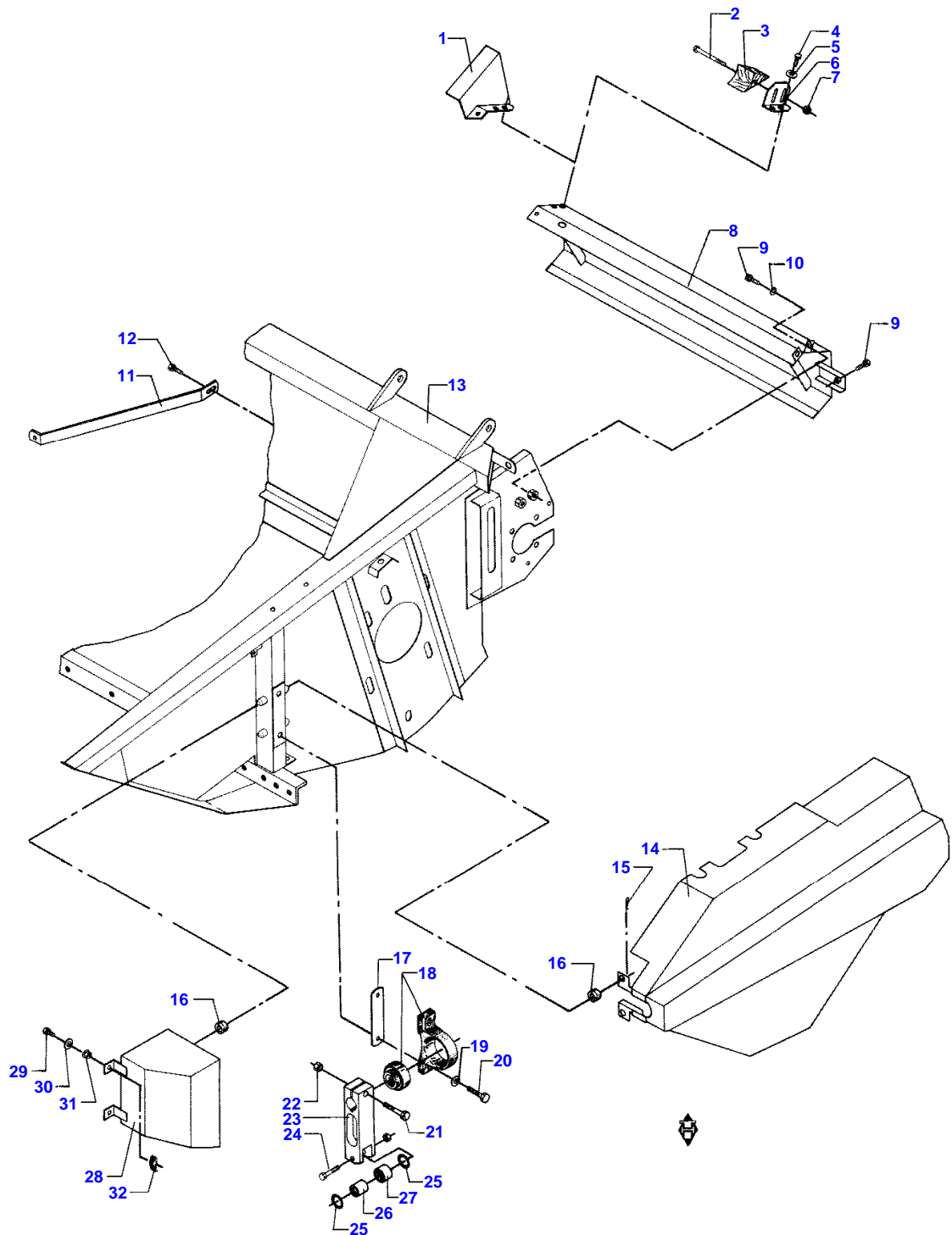
WEARING PLATES AND STONE STOP

Item	Part Number	Qty	Description	Comments
1	D28260275	1	Stop	(3) POS. 2-4 10,5'
1	D28260276	1	Stop	(3) POS. 2-4 12'
1	D28270174	1	Stop	(3) POS. 2-4 14'
2	D40404900	2	Screw Metric	(3)
3	D20400409	2	Washer	(3)
4	D41087500	2	Locknut	(3)
5	D28260541	1	Retainer	
6	D40404700	4	Screw Metric	
7	D41013500	4	Nut	
8	D28260540	1	Retainer	
9	D28260261	1	Housing	(U1)
	D28260367	1	Housing	(U2)
	D28270147	1	Housing	(T7)
10	D28260553	1	Plate	Right Hand
11	D40402400	16	Screw Metric	
12	D20400404	32	Washer	
13	D28260554	1	Plate	Left Hand
14	D42555500	4	Circlip	
15	D43427200	4	Pin	
16	D28260350	1	Guard	
17	D28260238	1	Bar	(U2)
	D28260266	1	Bar	(U1)
	D28270146	1	Bar	(T7)
18	D28250366	1	Wearplate	(E2) Right Hand
18	D28270161	1	Wearplate	(T7) Right Hand
19	D20400419		Washer	
20	D40408000		HEXAGON SCREW	
21	D28250368	1	Wearplate	(U2)
	D28260471	1	Wearplate	(U1)
22	D28250367	1	Wearplate	(E2)
	D28270162	1	Wearplate	(T7)
23	D28260550	1	Guard	(T5)
24	D40066800	3	Screw Metric	(T5)
25	D28260552	1	Retainer	(T5)
26	D41013600	3	Nut	(T5) (E2) 10,5' - 12' (T5) ONLY FOR DRY LANDS (T7) 14' (U1) 10,5' (U2) 12' (3) OPTIONAL EQUIPMENT



COUNTER SHAFT

Item	Part Number	Qty	Description	Comments
1	D40404700	6	Screw Metric	
2	D20400409	6	Washer	
3	D41989100	1	V Belt	
4	D28270075	1	Pulley	
	D28260542	1	Pulley	(A7)
5	D40407600	1	Screw	
6	D28260544	1	Hub	
7	D41707200	1	Bearing Carrier	
8	D20400426	2	Washer	
9	D40410900	2	Screw	
10	D43104700	1	Key	
11	D28260570	1	Countershaft	+F.918847 12'
11	D28260572	1	Shaft	+F.918847 10,5'
11	D28270185	1	Countershaft	+F.918847 14'
12	D43104100	1	Key	
13	D41707900	1	Flange	
14	D40410900	4	Screw	
15	D28260059	1	Pulley	
16	D41929400	1	V Belt	
	D41930600	1	V Belt	(A7)
17	D28260057	1	Bush	
18	D28260048	1	Head	
19	D43001500	1	Greaser	
20	D41087500	4	Locknut	
21	D41591500	1	Bearing	
22	D28260569	1	Holder	+F.918847
23	D40410900	1	Screw	
24	D28260049	1	Cover	
25	D40424000	4	HEXAGON SCREW	
26	D28260432	1	Rocker Shaft	
27	D41666600	2	Bush	
28	D45463300	2	O Ring	
29	D41665800	2	Bearing Assy	
30	D42512600	1	Circlip	
31	D41013600	1	Nut	
32	D28260181	1	Bolt	
	D28711783	1	Tightener	(A7)
33	D41087900	1	Locknut	
34	D28260377	1	Spacer	
35	D28731592	1	Pulley	
36	D40433400	1	HEXAGON SCREW	
37	D20400518	1	Spacer	(A7)
38	D27600548	1	Pulley	(A7)
39	D28260261	1	Housing	(U1)
	D28260367	1	Housing	(U2)
	D28270147	1	Housing	14'
40	D43105000	1	Key	
41	D41013200	1	Nut	+F.918847 (A7)
				OPTIONAL EQUIPMENT. REDUCE OF CUTTING TABLE (U1) 10,5' (U2) 12'



GUARDING

Item	Part Number	Qty	Description	Comments
1	D28160837	1	Guard	
2	D40424900	1	Screw Metric	
3	D28230839	1	Deflector	
4	D40405100	5	Screw Metric	
5	D20400505	2	Spacer	
6	D28270085	1	Bracket	
7	D41013500	1	Nut	
8	D28260239	1	Guard	(U2)
	D28260263	1	Guard	(U1)
	D28270169	1	Guard	(T7)
9	D40405100	5	Screw Metric	
10	D20400414	2	Washer	
11	D28260426	1	Stay	
12	D40407900	2	Screw Metric	
13	D28260261	1	Housing	(U1)
	D28260367	1	Housing	(U2)
	D28270147	1	Housing	(T7)
14	D28170089	1	Housing	
15	D44358000	2	Hair Pin	
16	D44732000	2	Grommet	
17	D28260359	5	Shim	(5)
18	D41702600	1	Bearing Carrier	
19	D20400426	2	Washer	
20	D40428600	2	HEXAGON SCREW	
21	D40428800	1	HEXAGON SCREW	
22	D41087700	2	Locknut	
23	D28260056	1	Lever	
24	D40428800	1	HEXAGON SCREW	
25	D45418900	2	Seal	
26	D28260055	1	Bush	
27	D41665900	1	Bush	
28	D28160780	1	Guard	
29	D40405000	2	Screw Metric	
30	D20400409	2	Washer	
31	D41013500	2	Nut	
32	D41057300	2	Wing Nut	
				(T7)
				14'
				(U1)
				10,5'
				(U2)
				12'
				(5)
				OPTIONAL

**Buy Now**



Our support email:

[ebooklibonline@outlook.com](mailto:ebooklibonline@outlook.com)