

TABLE OF CONTENT

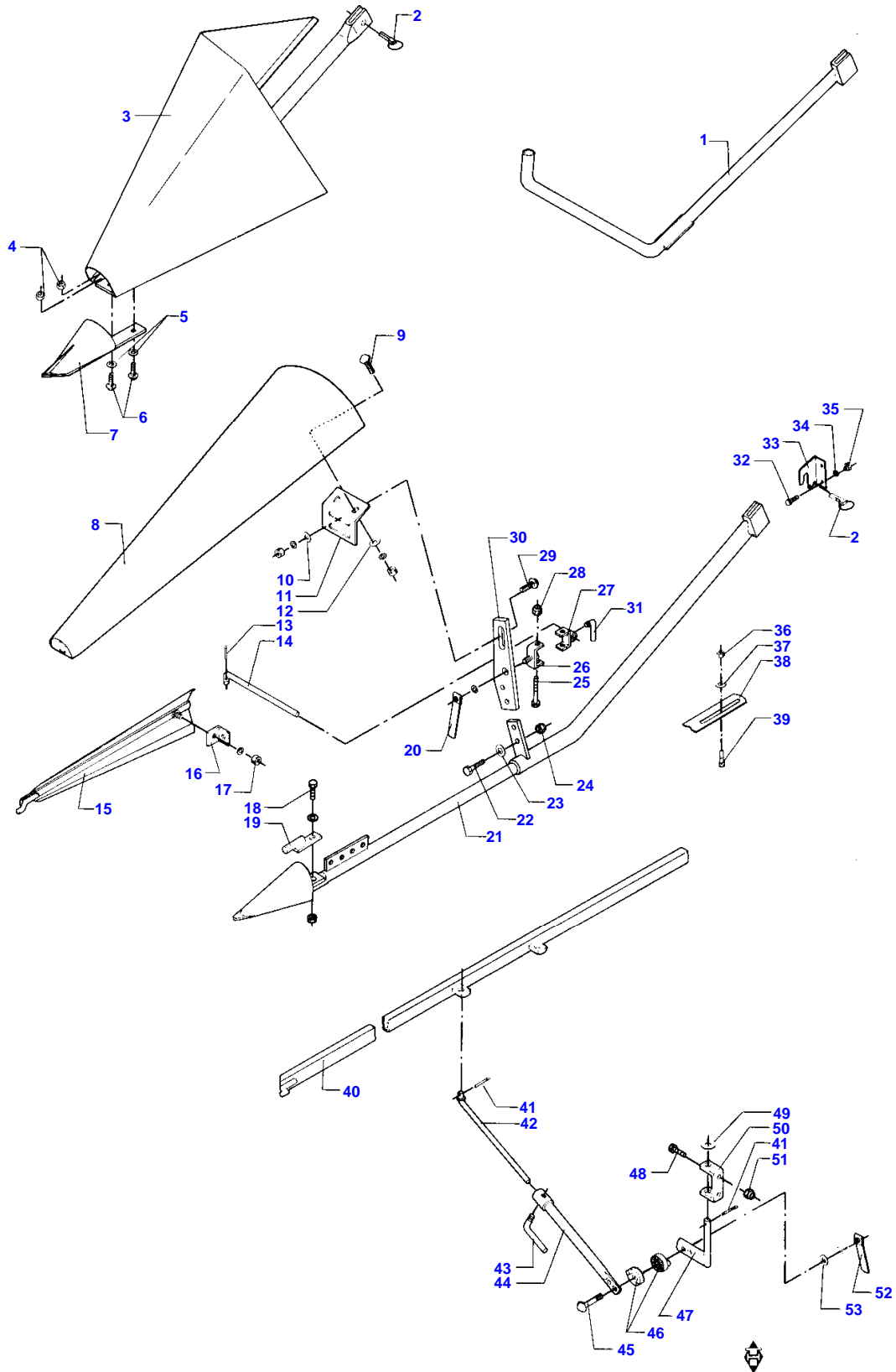
Page Title	Page Number
STRAW DIVIDER	1-1
KNIVES AND FINGERS	1-2
KNIFE CRANK AND BELLE CRANK	1-3
FEEDER DRUM	1-4
COUNTER SHAFT	1-5
GUARDING AND REDUCING EQUIPMENT	1-6
WEARING PLATES AND STONE STOP	1-7
TABLE TRAILER 1	1-8
TABLE TRAILER 2	1-9
LIGHTENING BRACKET	1-10
REVERSE DRIVE OF CUTTING TABLE	1-11
SIDE KNIFE	1-12
REEL-12'-14'	2-1A
REEL-16'	2-1B
REEL SUSPENSION AND ECCENTRIC	2-2
REEL SUSPENSION AND HYDRAULIC CYLINDERS	2-3
REEL SUSPENSION AND HYDRAULIC MOTOR	2-4
FEEDER SHAFT, LOWER	3-1
FEEDER SHAFT, UPPER WITH SUSPENSION	3-2
FEEDER CHAIN - PROTECTIVE PLATES	3-3
TABLE CLUTCH (F.39526)	3-4
TABLE CLUTCH (T.39525)	3-5
GUARDING	3-6
HYDRAULIC CYLINDER - EL - CYLINDER	3-7
CONCAVE	4-1
CONCAVE SETTING	4-2
THRESHING DRUM	4-3
DRUM SELECTOR WITH GUARDING	4-4
STONE TRAP	4-5
DRUM COVER	4-6
STRIPPER BEATER WITH PULLEYS (F.41002)	4-7A
STRIPPER BEATER WITH PULLEYS (T.41001)	4-7B
CHECK FLAPS	4-8
STRAW SHAKER AND CRANKS	5-1
MAIN FAN WITH BOTTOM PLATE AND SHUTTER	6-1
GUARDING AT MAIN FAN - ACCUMULATOR	6-2
MAIN FAN BLADES, GRAIN AUGER AND RETURN AUGER	6-3
MAIN FAN SELECTOR	6-4
CONVEYOR PAN WITH SUSPENSION	6-5
CLEANING UNIT DRIVE	6-6
CLEANING UNIT, SIEVES	6-7
CLEANING UNIT WITH SUSPENSION	6-8
GRAIN ELEVATOR WITH TOP PART	7-1
GRAIN ELEVATOR WITH CHAIN AND BOTTOM PART	7-2
FILLING ELEVATOR WITH TOP PART	7-3
FILLING ELEVATOR WITH CHAIN AND BOTTOM PART	7-4
RETURN ELEVATOR	7-5
UPPER RETURN AUGER	7-6
SECOND CLEANER WITH FAN	8-1
CLEANER WITH FAN SHAFT AND BELT DRIVE	8-2
SECOND CLEANER WITH AWNER	8-3
SECOND CLEANER WITH CIRCULATION AND SUSP. STAY	8-4
SEED GRINDER	8-5
DISCHARGE AUGER, FIXED PART	9-1
SPREADER AUGER	9-2
DISCHARGE AUGER, SWIVEL PART - VIBRATION BEAM	9-3
DISCHARGE AUGER PIPE	9-4
SHUTTERS FOR GRAIN TANK - ROTORLAMP	9-5
GRAIN TANK TOP	9-6
SUCTION CHANNEL AND HYDRAULIC COOLER-PERKINS	10-1
RADIATOR HOSES AND CABLES (PERKINS T6.354.4)	10-2
RADIATOR HOSES AND CABLES (PERKINS T6.354.4 CC)	10-3
AIR CLEANER (PERKINS T6.354.4)	10-4
AIR CLEANER (PERKINS T6.354.4 CC)	10-5
STRAINER-PERKINS	10-6
SILENCER AND HOSES (PERKINS T6.354.4)	10-7

TABLE OF CONTENT

SILENCER AND HOSES (PERKINS T6.354.4 CC)	10-8
ENGINE BRACKET, FRONT - PROPULSION PUMP (PERKINS)	10-9
P.T.O. AND COUPLING AF THRESHING MECHANISM (PERKINS)	10-10
ENGINE BRACKET, REAR - HYDR. PUMP (PERKINS T6.354.4)	10-11
ENGINE BRACKET, REAR - HYDR. PUMP (PERKINS T6.354.4 CC)	10-12
FUEL TANK (PERKINS + VALMET)	10-13
OIL TANK-FRAME F.ENGINE COMPARTM. (PERKINS T6.354.4)	10-14A
OIL TANK-FRAME F. ENGINE COMPARTM. (PERKINS T6.354.4 CC)	10-14B
SUCTION CHANNEL AND HYDR. COOLER (VALMET)	10-15
RADIATOR HOSES AND CABLES (VALMET)	10-16
AIR CLEANER (VALMET)	10-17
STRAINER AND RADIATOR BRACKET (VALMET)	10-18
PROP. PUMP - COUPL. OF THRESH. MECHAN. (VALMET).	10-19
ENGINE BRACKET AND SILENCER (VALMET)	10-20
P.T.O. AND HYDRAULIC PUMP (VALMET)	10-21
OIL TANK	10-22
COMPRESSOR 1	10-23
COMPRESSOR 2	10-24
COUNTER SHAFT WITH SELECTOR	11-1
COUNTER DRIVE FOR CLEANING UNIT AND SHAKERS	11-2
BELT MOUNTING	11-3
DRIVING WHEELS AND SIDE PINIONS ON THE RIGHT	12-1
DRIVING WHEELS AND SIDE PINIONS ON THE LEFT	12-2
FRONT AXLE WITH GEARBOX AND SHAFTS	12-3
REAR AXLE	12-4
STEERING WHEEL AND STEERING CYLINDER	12-5
GEAR BOX 1, ZF	12-6
GEAR BOX 2, ZF	12-7
GEAR BOX 3, ZF	12-8
SIDE PINIONS ZF	12-9
GEAR BOX 1 COBRA T.48213	12-10
GEAR BOX 2 COBRA T.48213	12-11
SIDE PINIONS COBRA T.48213	12-12
GEAR BOX COBRA F.48214	12-13
GEAR BOX COBRA F.48214	12-14
SIDE PINIONS COBRA F.48214	12-15
LADDER - HANDRAIL - PLATFORM, LEFT	13-1
BOTTOM PLATES - PLATFORM, RIGHT	13-2
BRAKE PEDALS AND BRAKE CABLES	13-3
OPERATOR SEAT, STEERING ARRANGEMENT	13-4
INSTRUMENT PANEL WITH SWITCHES AND CABLES	13-5
ADJUSTING LEVERS	13-6
CONTROL BOX 1	13-7
CONTROL BOX 2	13-8
CAB ROOF	13-9
CAB ROOF WITH AIR-CONDITION	13-10
DRIVER CABIN	13-11
WINDOW PANES	13-12
HYDRAULIC CYLINDER - STEERING CYLINDER 1	14-1A
HYDRAULIC CYLINDER - STEERING CYLINDER 2	14-1B
PROPULSION HYDRAULIC	14-2
AUXILIARY HYDRAULIC (F.39980)	14-3
AUXILIARY HYDRAULIC (T.39979)	14-4
HYDRAULIC FOR VIBRATION BEAM	14-5
HYDRAULIC CHART, REVERSE DRIVE	14-6
HYDRAULIC - TABLE F.39980	14-7
PROPULSION HYDRAULIC SAUER	14-8
BAND	15-1
STRAW NOSE - LADDER - STRAW GUIDE	15-2
UPPER GUARDING	15-3
LOWER GUARDING AND WIND GUARDING	15-4
CONDENSER	15-5
TOOLS - PAINT	16-1
EXPLANATION OF SYMBOLS FOR WIRING DIAGRAMS	16-3
WIRING - TABLE TRAILER	16-4
WIRING - UNI-CONTROL	16-5
WIRING - GRAIN LOSS MONITOR	16-6
STRAW CHOPPER 1	17-1

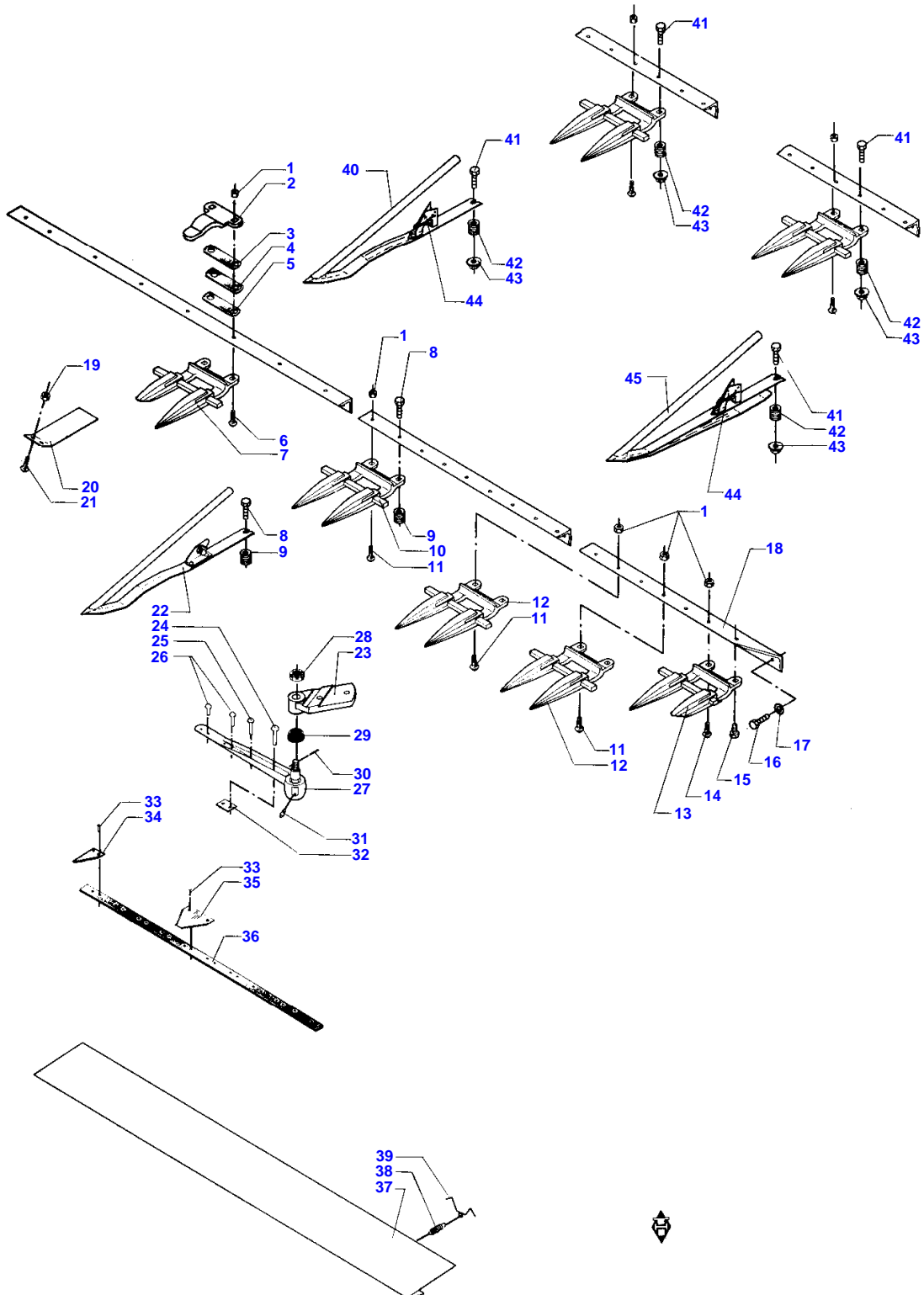
TABLE OF CONTENT

COUNTER DRIVE FOR STRAW CHOPPER	17-2
STRAW CHOPPER SUSPENSION	17-3
STRAW CHOPPER REKORD	17-4
ACCESSORIES REKORD	17-5
STRAW CHOPPER FLAP SYSTEM CHOPPER	17-6
SPREADER FLAP SYSTEM CHOPPER	17-7A
DISTRIBUTOR BOX FLAP SYSTEM CHOPPER	17-7B
STRAW CHOPPER 2	17-8A
STRAW CHOPPER 2	17-8B
SPREADER HOOD	17-9
TRANSMISSION 1	18-1
TRANSMISSION 2	18-2



STRAW DIVIDER

Item	Part Number	Qty	Description	Comments
1	D28230460	2	Divider	
2	D41447300	2	Split Ring	
3	D28251801	1	Point	POS.2-7
	D28251802	1	Point	POS.2-7
4	D41087600	4	Locknut	
5	D20400471	4	Washer	
6	D40066800	4	Screw Metric	
7	D28260226	2	Point	
	D28250900	1	Divider	(F1) POS.8-31 Right Hand
	D28250901	1	Divider	(F0) POS.8-31 Left Hand
8	D28211126	1	Divider	
9	D40063700	2	Screw	
10	D20400471	2	Washer	
11	D28230447	1	Plate	
12	D20400409	2	Washer	
13	D41408700	1	SPLIT PIN	
14	D28230462	1	Rod	
15	D28230457	1	Wing	
16	D27200313	1	Angle	
17	D41010800	1	Nut Metric	
18	D40407900	1	Screw Metric	
19	D27200640	1	Stop	
20	D27300323	1	Locknut	
21	D28230517	1	Support	
22	D40405000	2	Screw Metric	
23	D20400409	2	Washer	
24	D41013500	2	Nut	
	D28230467	1	Mounting	POS.25-28
25	D40424400	1	HEXAGON SCREW	
26	D28230468	1	Mounting	1
27	D28230471	1	Mounting	2
28	D41087500	1	Locknut	
29	D40066700	2	Screw	
30	D28250549	1	Plate	
31	D27200300	1	Pin	
32	D40407700	4	Screw	
33	D28230465	1	Support	Right Hand
	D28230466	1	Support	Left Hand
34	D20400471	4	Washer	
35	D41087600	4	Locknut	
36	D41087700	2	Locknut	
37	D20400426	2	Washer	
38	D28230453	2	Plate	2
39	D40070200	2	Screw Metric	
	D28230487	2	Wing	POS.40-53
40	D28230480	1	Wing	
41	D41410600	2	Splint	
42	D28230482	1	Support	
43	D27200364	1	Handle	
44	D28230486	1	Pipe	
45	D40021300	1	Screw	
46	D28230488	2	Clutch	
47	D28230473	1	Support	
48	D40407700	2	Screw	
49	D20400518	1	Spacer	
50	D28230472	1	Bracket	
51	D41087600	2	Locknut	
52	D27300323	1	Locknut	
53	D20400426	1	Washer	(F0) ON THE RIGHT (F1) ON THE LEFT

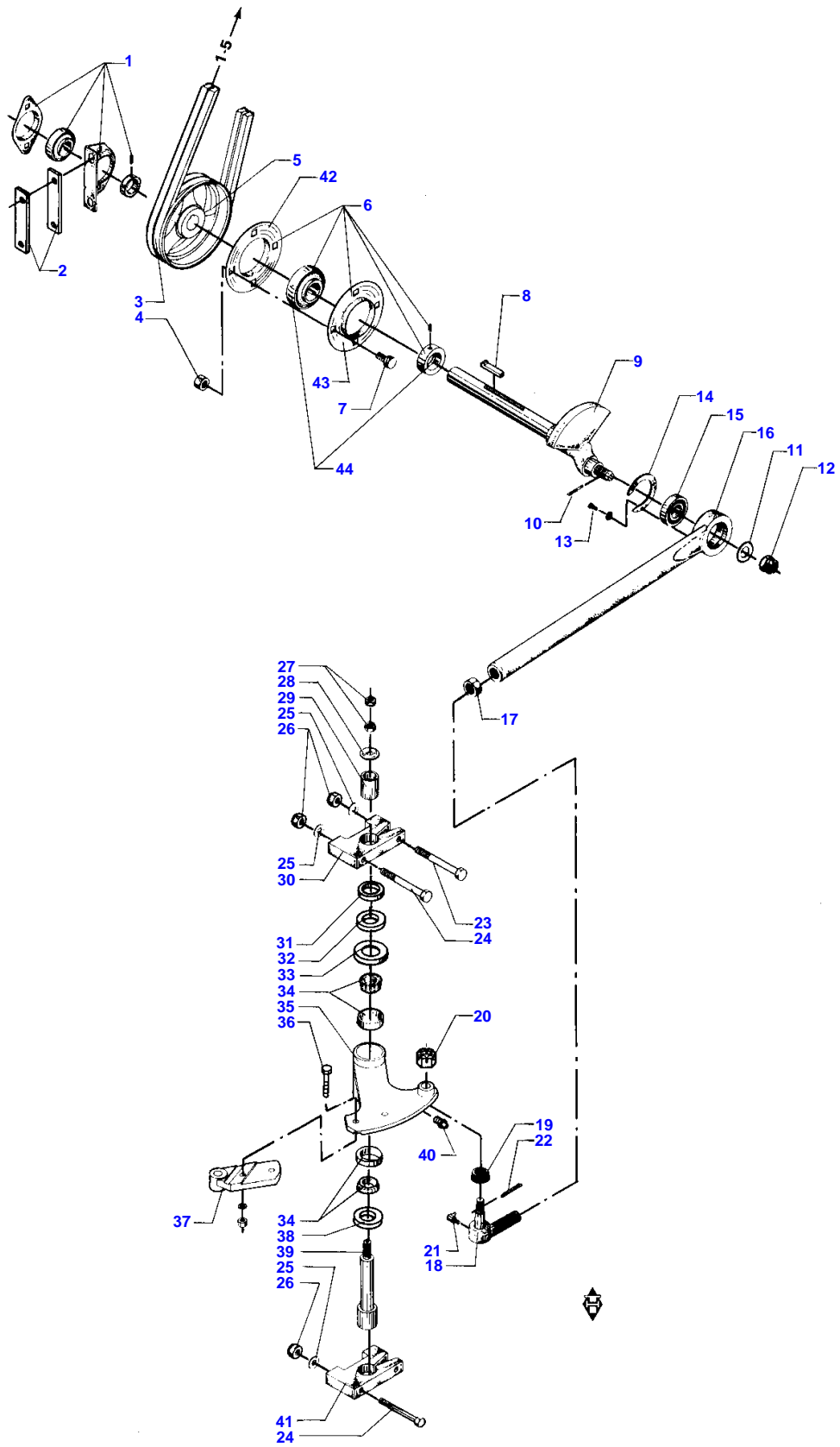


KNIVES AND FINGERS

Item	Part Number	Qty	Description	Comments
1	D41010800		Nut Metric	
2	D25200899	12	Clip	12'-3, 72 M
	D25200899	14	Clip	14'-4, 34 M
	D25200899	16	Clip	16'-4, 95 M
3	D28210349		Shim	
4	D28210350		Shim	
5	D28230292		Shim	
6	D40551600		Bolt	
7	D28260531	1	Finger	
8	D40425800	12	Screw	
	D40407900	14	Screw Metric	
	D40425800	16	Screw	
9	D28230833		Nut	
10	D44102900	21	Finger	12'-3, 72 M
	D44102900	25	Finger	14'-4, 34 M
	D44102900	31	Finger	16'-4, 95 M
11	D40551600		Bolt	
12	D44103300	2	Finger	
13	D44104400	1	Finger	
14	D40551500		Bolt	
15	D40407600	1	Screw	
16	D40407800		HEXAGON SCREW	
17	D20400471		Washer	
18	D28230010	1	Bar	16'
	D28230011	1	Bar	14'
	D28250017	1	Bar	12'
19	D41013500	2	Nut	
20	D28230829	1	Guard	
21	D40063700	2	Screw	
22	D49040000	12	Ear Lifter	1 12'-3, 72 M
22	D49040000	14	Ear Lifter	1 14'-4, 34 M
22	D49040000	16	Ear Lifter	1 16'-4, 95 M
23	D28230227	2	Lever	
	D25201054	2	Knife	12' POS.24-36
	D28230034	2	Blade	14' POS.24-36
	D28230037	2	Knife	16' POS.24-36
24	D41378300	3	Rivet	
25	D41377800	2	Rivet	
26	D41378200	4	Rivet	
27	D44120000	1	Knife Head	POS.28-29
28	D41048700	1	Castle Nut	
29	D44120200	1	Cap	
30	D41406000	1	SPLIT PIN	
31	D43004900	1	Foam	
32	D28230120	1	Spacer	
33	D41377500		Rivet	
34	D44103400	1	Blade	
35	D44100000		Section	
36	D25201070	2	Knife Back	12'-3, 72 M
	D28230008	2	Knife Back	14'-4, 34 M
	D28230007	2	Knife Back	16'-4, 95 M
37	D28230842	1	Guard	(S3) POS.38-39
37	D28230843	1	Guard	(S3) POS.38-39
37	D28230844	1	Guard	(S4) POS.38-39
37	D28230845	1	Guard	(S4) POS.38-39
38	D26500317	2	Spring	
39	D28230841	2	Spring	
40	D49040200	12	Ear Lifter	2 (3) 12'-3, 72 M

KNIVES AND FINGERS

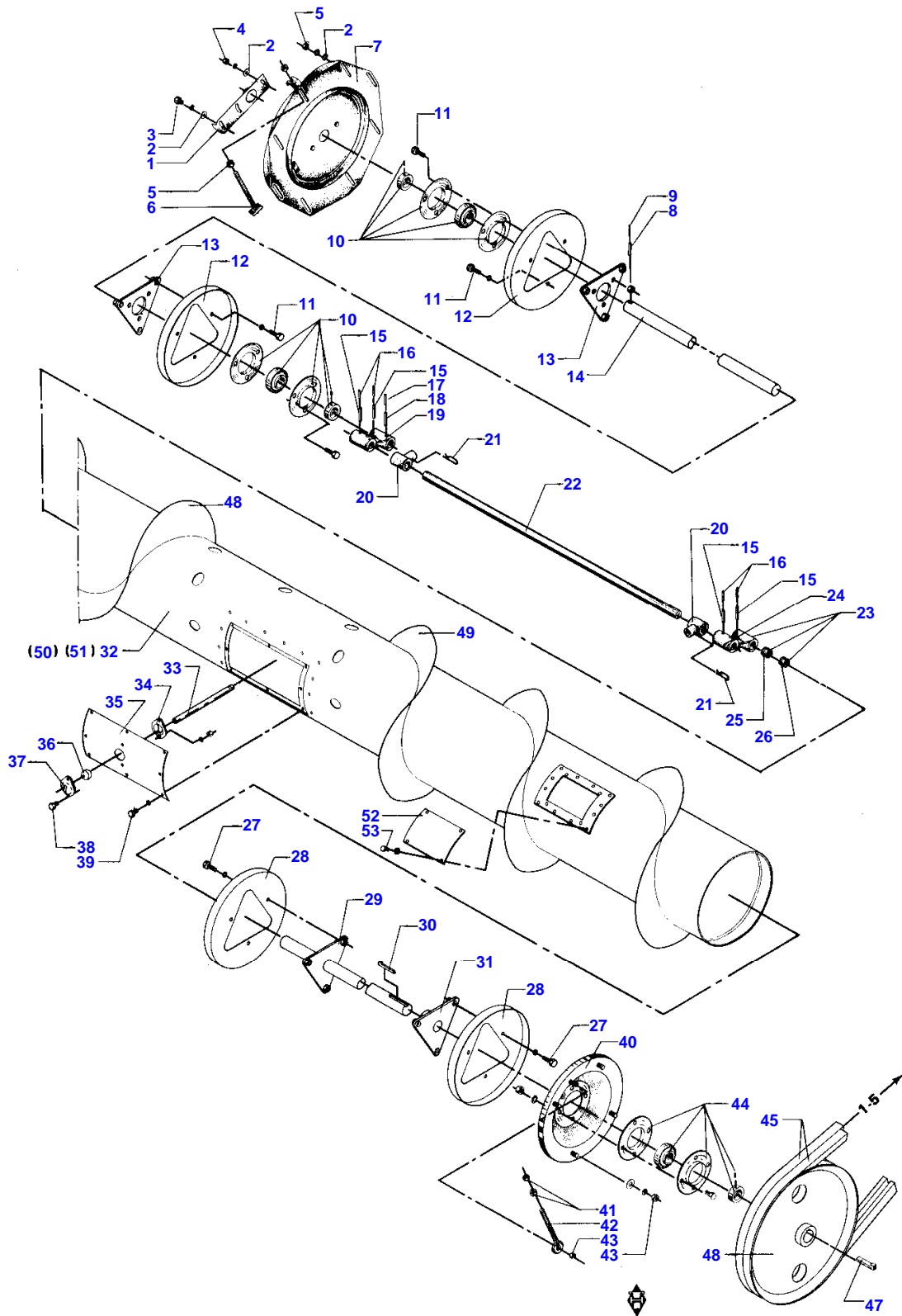
Item	Part Number	Qty	Description	Comments
40	D49040200	14	Ear Lifter	2 (3) 14'-4, 36 M
40	D49040200	16	Ear Lifter	2 (3) 16'-4, 95 M
41	D40426100		Screw	
42	D49040500		Roller	TYPE 2+3
43	D41013600		Nut	
44	D49040400		Spring	TYPE 2+3
45	D49040300	12	Ear Lifter	(3) 12'-3, 72 M
45	D49040300	14	Ear Lifter	(3) 14'-4, 36 M
45	D49040300	16	Ear Lifter	(3) 16'-4, 95 M (S3) 12'-14' (S4) 16' (3) OPTIONAL EQUIPMENT



KNIFE CRANK AND BELLE CRANK

Item	Part Number	Qty	Description	Comments
1	D41707300	1	Bearing	
2	D28211109	2	Shim	
3	D41964300	2	V Belt	
4	D41087700	4	Locknut	
5	D28250704	1	Pulley	
6	D41707900	1	Flange	
7	D40410800	4	HEXAGON SCREW	
8	D43155200	1	Gib Key	
9	D28250169	1	Arm	
10	D41409100	1	SPLIT PIN	
11	D20400448	1	Washer	
12	D41049100	1	Castle Nut	
	D28230249	1	Pitman	POS.13-21
13	D40402200	3	Screw Metric	
14	D28220084	1	Lock Washer	
15	D41706100	1	Bearing Ball	
16	D28230247	1	Conrod	
17	D28220093	1	Locknut	
18	D44120100	1	Toggle	POS.19-20
19	D44120200	1	Cap	
20	D41048700	1	Castle Nut	
21	D43005100	1	Greaser	T.915607
22	D41409000	1	Pin	
24	D40429800	4	HEXAGON SCREW	
25	D20400426	1	Washer	
26	D41087700	4	Locknut	
	D28230231	1	Bellcrank	POS.27-40
27	D41012300	2	HEXAGON SCREW	
28	D28220087	1	Washer	
29	D28250691	1	Bush	
30	D28210913	1	Clamp	
31	D28250690	1	Spacer	
32	D45409100	1	Seal	
33	D28250692	1	Ring	
34	D41667400	2	Bearing Roller	
35	D28230224	1	Crank	
36	D40428300	2	HEXAGON SCREW	
37	D28230227	1	Lever	
38	D45409000	1	Seal	
39	D28220086	1	Shaft	M16
40	D43001500	1	Greaser	
41	D28210913	1	Clamp	
42	D41711100	1	Flange	(T5)
43	D41712200	1	Flange	(T5)
44	D41663900	1	Bearing Ball	(T5)

ONLY FOR DRY LANDS

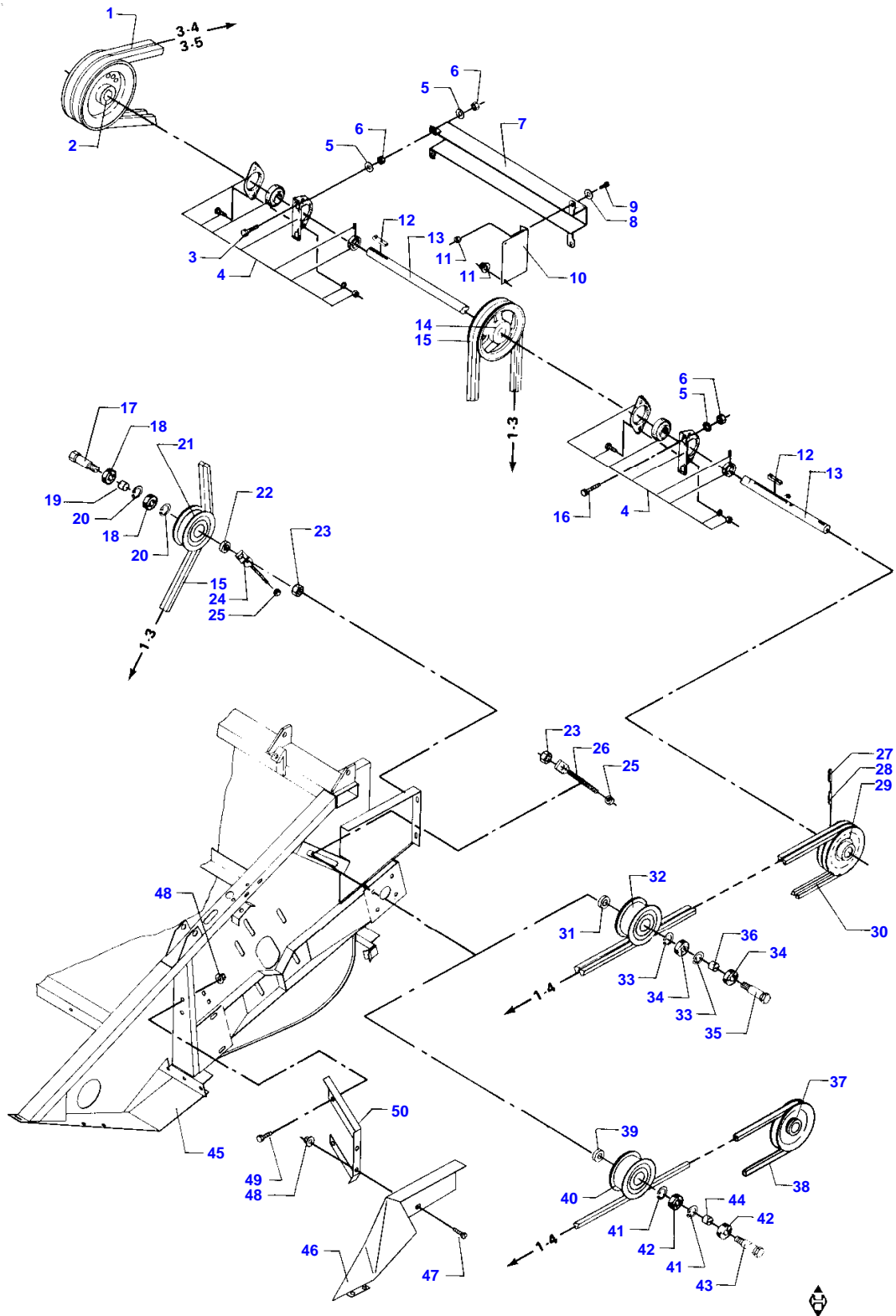


FEEDER DRUM

Item	Part Number	Qty	Description	Comments
1	D28250111	1	Bracket	
2	D20400409	11	Washer	
3	D40404700	1	Screw Metric	
4	D41010700	10	Nut Metric	
5	D41010800	2	Nut Metric	
6	D28211023	1	Bolt	
7	D28251319	1	Plate	+F.915608 Right Hand
7	D28220110	1	Plate	T.915607
8	D42625300	1	Pin	
9	D42616400	1	Pin	
	D28250380	1	Shaft	12' POS.10-26
	D28250381	1	Shaft	14' POS.10-26
	D28250382	1	Shaft	16' POS.10-26
10	D41707800	2	Flange	
11	D40407700	12	Screw	
12	D28251405	2	Plate	(2) +F.914863
13	D28250107	2	Plate	
14	D28250108	1	Crankshaft	12'
	D28250109	1	Shaft	14'
	D28250251	1	Crankshaft	16'
15	D42616200	4	Pin	
16	D42609900	4	Pin	
17	D42616400	1	Pin	
18	D42625300	1	Pin	
19	D28250385	1	Arm	Right Hand
20	D28250585	15	Support	
21	D28281236	15	Hair Pin	
22	D28200547	1	Shaft	
23	D28250384	1	Arm	(S3) POS.24-26
23	D28230051	1	Arm	(S4) POS-24-26
24	D28250096	1	Arm	Left Hand (S3)
24	D28230050	1	Arm	Left Hand (S4)
25	D43338100	1	Bearing	(S3)
	D43338700	1	Bush	(S4)
26	D43338300	1	Bush	(S3)
	D43338900	1	Bush	(S4)
27	D40407600	6	Screw	
28	D28251405	2	Plate	(2) +F.914863
29	D2825009	1	Drive Shaft	12' POS.30-31
29	D28250101	1	Drive Shaft	14' POS.30-31
29	D28250247	1	Drive Shaft	16' POS.30-31
30	D43154300	1	Gib Key	
31	D28250535	1	Flange	
32	D28251363	1	Auger	14' POS.10-31
32	D28251365	1	Auger	16' POS.10-31
32	D28251410	1	Auger	12' POS.10-31
33	D28250566	15	Finger	
34	D28200150	15	Support	
35	D28251302	1	Cover	+F.915608
	D28200133	1	Cover	T.915607
36	D28260314	15	Toggle	
37	D28200151	15	Support	
38	D40402400	30	Screw Metric	
39	D40402200	8	Screw Metric	

FEEDER DRUM

Item	Part Number	Qty	Description	Comments
40	D28210870	1	Plate	(S3)
40	D28230103	1	Plate	(S4)
41	D41010800	2	Nut Metric	
42	D28210895	1	Bolt	
43	D41010700	5	Nut Metric	
44	D41707800	1	Flange	(S3)
44	D41707900	1	Flange	(S4)
45	D41983500	1	V Belt	(R9)
45	D41983500	2	V Belt	(R8)
45	D41983600	2	Belt	(T5)
46	D28210902	1	Pulley	C 450 (R9)
46	D28230198	1	Pulley	2C-450 (R8) 16'
46	D28250887	1	Pulley	2C-450 (R8) 12'-14'
47	D43155200	1	Gib Key	(S3)
47	D43156800	1	Gib Key	(S4)
48	D28251335	1	Spiral	12' (U2) +F.915608
48	D28251329	1	Spiral	14' (T7) +F.915608
48	D28251330	1	Spiral	16' (S4) +F.915608
49	D28251336	1	Spiral	12' (U2) F.915608
49	D28251332	1	Spiral	14' (T7) +F.915608
49	D28251333	1	Spiral	16' (S4) +F.915608
50	D28251303	1	Tube	F.915608
50	D28250115	1	Cowl	T.915607
51	D28251338	2	Shell	12' (U2) +F.915608
51	D28251337	2	Tube	14' (T7) +F.915608
51	D28251342	2	Shell	16' (S4) +F.915608
52	D28250412	2	Cover	(S4)
53	D40402200	8	Screw Metric	(R8) FOR TABLES WITH DOUBLE BELT (R9) FOR TABLES WITH SINGLE BELT (S3) 12'-14' (S4) 16' (T5) ONLY FOR DRY LANDS (T7) 14' (U2) 12' (2) NO. REFERS TO TABLE NUMBER



Buy Now



Our support email:

ebooklibonline@outlook.com