

Page Title	Page Number
SECTION DIVIDER	1
ENGINE INSTALLATION	2
CYLINDER BLOCK - A4.236 ENGINE	3
CRANKSHAFT, PISTONS AND CONNECTING RODS - A4.236 ENGINE	4
CYLINDER HEAD - A4.236 ENGINE	5
ROCKER SHAFT - A4.236 ENGINE	6
TIMING GEAR AND CAMSHAFT - A4.236 ENGINE	7
BALANCER UNIT - A4.236 ENGINE	8
FUEL INJECTION EQUIPMENT (DIESEL) - A4.236 ENGINE	9
LUBRICATING OIL SUMP - A4.236 ENGINE	10
LUBRICATING OIL FILTER AND INTEGRAL COOLER - A4.236 ENGINE	11
WATER PUMP, THERMOSTAT AND HEAT EXCHANGER - A4.236 ENGINE	12
FUEL OIL LIFT PUMP - A4.236 ENGINE	13
AIR INDUCTION AND EXHAUST SYSTEM - A4.236 ENGINE	14
ALTERNATOR POSITIONER - A4.236 ENGINE	15
JOINTS AND GASKETS - A4.236 ENGINE	16
ENGINE ELECTRICS - UP TO SERIAL NO. V52268	17
ENGINE ELECTRICS - -CAB FROM NU V52268.- -FOOTSTEP FROM NU V52268, UP TO NO A29150	18
ENGINE ELECTRICS - FOOTSTEP TRACTORS - FROM SERIAL NUMBER A29151	19
STARTER - PERKINS	20
STARTER-LUCAS	21
ALTERNATOR-LUCAS	22
ALTERNATOR-LUCAS - TRACTOR WITH CAB	23
ALTERNATOR - VALEO	24
ALTERNATOR-MAGNETI MARELLI	25
BATTERIES AND CABLES - FOOTSTEP TRACTORS - SINGLE BATTERY- UP TO SERIAL NUMBER .....	26
BATTERIES AND CABLES - FOOTSTEP TRACTORS - SINGLE BATTERY - FROM SERIAL NUMBER .....	27
BATTERIES AND CABLES - FOOTSTEP TRACTORS - DOUBLE BATTERY - UP TO SERIAL NUMBER .....	28
BATTERIES AND CABLES - FOOTSTEP TRACTORS - DOUBLE BATTERY - FROM SERIAL NUMBER.....	29
BATTERIES AND CABLES - TRACTORS WITH CAB - SINGLE BATTERY	30
BATTERIES AND CABLES - TRACTORS WITH CAB - DOUBLE BATTERY	31
BATTERIES AND CABLES - WITH CAB - DOUBLE BATTERY - SWEDEN ONLY	32
HEATER-ENGINE BLOCK	33
COOLING SYSTEM	34
AIR CONDITIONER	35
AIR CONDITIONER - COMPRESSOR	36
FUEL SYSTEM-FUEL TANK AND ATTACHMENTS - UP TO SERIAL NO. S19230	37
FUEL SYSTEM-FUEL TANK AND ATTACHMENTS - FROM SERIAL NO. S19231	38
FUEL SYSTEM-FUEL FILTERS AND PIPES	39
FUEL SYSTEM-FUEL FILTER	40
SEDIMENTER	41
AIR FILTER-OIL BATH AIR FILTER	42
AIR FILTER-DRY - DUAL ELEMENT - AIR INTAKE - OVER BONNET	43
AIR FILTER-DRY - DUAL ELEMENT - AIR INTAKE - UNDER BONNET	44
EXHAUST SYSTEM-VERTICAL	45
EXHAUST SYSTEM-VERTICAL	46
EXHAUST SYSTEM-HORIZONTAL	47
THROTTLE CONTROLS	48
THROTTLE CONTROLS-REAR - FORESTRY CAB	49

## TABLE OF CONTENT

CONSOLE ELECTRICS-FOOTSTEP MODELS - UP TO SERIAL NO. V52268	50
CONSOLE ELECTRICS-FOOTSTEP MODELS - FROM SERIAL NO.V52268. UP TO SERIAL NUMBER A29150	51
CONSOLE ELECTRICS-FOOTSTEP MODELS - FROM SERIAL NO.V52268. UP TO SERIAL NUMBER A29150 NATO ONLY	52
CONSOLE ELECTRICS-FOOTSTEP MODELS - FROM SERIAL NUMBER A29151	53
CONSOLE ELECTRICS-FOOTSTEP MODELS - FROM SERIAL NUMBER A29151	54
CONSOLE ELECTRICS-CAB MODELS - CAB MACHINE. UPTO SERIAL NO.V52268	55
CONSOLE ELECTRICS-CAB MODELS - CAB MACHINE. FROM SERIAL NO.V52268 - ALL MARKETS EXCEPT NORTH AMERICA	56
CONSOLE ELECTRICS-CAB MODELS - CAB MACHINE. FROM SERIAL NO.V52268-NORTH AMERICA ONLY	57
INSTRUMENT PANEL AND INSTRUMENTS - TRACTORS WITH CAB -FOOTSTEP TRACTORS UP TO A29150	58
INSTRUMENT PANEL AND INSTRUMENTS - FOOTSTEP TRACTORS - FROM SERIAL NUMBER A29151	59
INSTRUMENT PANEL AND INSTRUMENTS - FOOTSTEP TRACTORS - FROM SERIAL NUMBER A29151	60
INSTRUMENT PANEL AND INSTRUMENTS - FOOTSTEP TRACTORS - FROM SERIAL NUMBER A29151	61
CLUTCH-PEDAL	62
CLUTCH-PEDAL - DIRECT OPERATING- UP TO SERIAL NO 04-1993	63
CLUTCH-DUAL CLUTCH - 12/305MM PITCH CIRCLE DIAMETER	64
CLUTCH-DUAL CLUTCH CERAMETALLIC - 12/305MM PITCH CIRCLE DIAMETER	65
CLUTCH-SPLIT TORQUE CLUTCH - 12/305MM PITCH CIRCLE DIAMETER	66
CLUTCH-SPLIT TORQUE CERAMETALLIC - 12/305MM PITCH CIRCLE DIAMETER	67
CLUTCH-SPLIT TORQUE CLUTCH - 13/330MM PITCH CIRCLE DIAMETER	68
CLUTCH-SPLIT TORQUE CERAMETALLIC - 13/330MM PITCH CIRCLE DIAMETER	69
8 SPEED NON-SYNCHROMESH TRANSMISSION-HOUSING	70
8 SPEED NON-SYNCHROMESH TRANSMISSION-FORK AND GEARSHIFT RAIL	71
8 SPEED NON-SYNCHROMESH TRANSMISSION-INPUT SHAFT	72
8 SPEED NON-SYNCHROMESH TRANSMISSION-MAIN SHAFT	73
8 SPEED NON-SYNCHROMESH TRANSMISSION-COUNTER SHAFT	74
EPICYCLIC UNIT-HEAVY DUTY	75
8 SPEED SYNCHROMESH TRANSMISSION-HOUSING	76
8 SPEED SYNCHROMESH TRANSMISSION-FORK AND GEAR SHIFTRAIL	77
8 SPEED SYNCHROMESH TRANSMISSION-INPUT SHAFT	78
8 SPEED SYNCHROMESH TRANSMISSION-MAIN SHAFT	79
8 SPEED SYNCHROMESH TRANSMISSION-COUNTERSHAFT	80
EPICYCLIC UNIT-HEAVY DUTY	81
8 SPEED SYNCHROMESH SHUTTLE TRANSMISSION-HOUSING	82
8 SPEED SYNCHROMESH SHUTTLE TRANSMISSION-FORK AND GEARSHIFT RAIL	83
8 SPEED SYNCHROMESH SHUTTLE TRANSMISSION-INPUT SHAFT	84
8 SPEED SYNCHROMESH SHUTTLE TRANSMISSION-MAIN SHAFT	85
8 SPEED SYNCHROMESH SHUTTLE TRANSMISSION-COUNTERSHAFT	86
EPICYCLIC UNIT-HEAVY DUTY	87
12 SPEED SYNCHROMESH TRANSMISSION-HOUSING	88
12 SPEED SYNCHROMESH TRANSMISSION-FORK AND GEARSHIFT RAIL	89
12 SPEED SYNCHROMESH TRANSMISSION-INPUT SHAFT	90
12 SPEED SYNCHROMESH TRANSMISSION-MAIN SHAFT	91
12 SPEED SYNCHROMESH TRANSMISSION-COUNTER SHAFT	92
EPICYCLIC UNIT-NORMAL DUTY	93
EPICYCLIC UNIT-HEAVY DUTY	94
12 SPEED SYNCHROMESH SHUTTLE TRANSMISSION-HOUSING - UP TO SERIAL NO B18008	95
12 SPEED SYNCHROMESH SHUTTLE TRANSMISSION-FORK AND GEARSHIFT RAIL	96
12 SPEED SYNCHROMESH SHUTTLE TRANSMISSION-INPUT SHAFT	97

TABLE OF CONTENT

12 SPEED SYNCHROMESH SHUTTLE TRANSMISSION-MAIN SHAFT	98
12 SPEED SYNCHROMESH SHUTTLE TRANSMISSION-COUNTER SHAFT	99
MULTIPOWER SYNCHROMESH TRANSMISSION-HOUSING	100
MULTIPOWER SYNCHROMESH TRANSMISSION-FORK AND GEARSHIFT RAILS	101
MULTIPOWER SYNCHROMESH TRANSMISSION-INPUT SHAFT	102
MULTIPOWER SYNCHROMESH TRANSMISSION-MAINSHAFT	103
MULTIPOWER SYNCHROMESH TRANSMISSION-COUNTERSHAFT	104
EPICYCLIC UNIT-HEAVY DUTY	105
SHIFT LEVERS-8 SPEED TRANSMISSION	106
SHIFT LEVERS-8 SP SYNCHRO SHUTTLE TRANSMISSION - COLUMN CHANGE - FORWARD/REVERSE	107
SHIFT LEVERS-8 SP SYNCHRO SHUTTLE TRANSMISSION - COLUMN CHANGE - FORWARD/REVERSE	108
SHIFT LEVERS-MULTIPOWER TRANSMISSION - NOT FOR HIGH LINE CAB	109
SHIFT LEVERS-MULTIPOWER TRANSMISSION - FOR HIGH LINE CAB	110
SHIFT LEVERS-12 SPEED TRANSMISSION - NOT FOR HIGH LINE CAB	111
SHIFT LEVERS-12 SPEED TRANSMISSION - FOR HIGH LINE CAB	112
TOP COVER-12 SPEED SYNHRO SHUTTLE TRANS	113
TOP COVER-12 SPEED CREEPER SHUTTLE TRANS - CABLE CONTROL	114
TOP COVER-12 SPEED CREEPER SHUTTLE TRANS - DRIVE GEAR BOX	115
TOP COVER-12 SPEED CREEPER SHUTTLE TRANS - CONTROL	116
SHIFT LEVERS-12 SPEED SYNCHRO SHUTTLE TRANS	117
SHIFT LEVERS-12 SPEED SYNCHRO SHUTTLE TRANS	118
4 WHEEL DRIVE CONTROLS	119
4 WHEEL DRIVE CONTROLS - WITH 12 SPEED SYNCHRO SHUTTLE TRANS WITH RANGE BOX	120
4 WHEEL DRIVE CONTROLS	121
TRANSFER GEAR BOX-4 WHEEL DRIVE - UP TO SERIAL NO..... - T/F CLUTCH	122
TRANSFER GEAR BOX-4 WHEEL DRIVE - HYDRAULIC CONTROL	123
TRANSFER GEAR BOX-4 WHEEL DRIVE	124
RANGEBOX-4 WHEEL DRIVE	125
RANGEBOX-4 WHEEL DRIVE POD	126
SPACER-2 WHEEL DRIVE	127
RANGEBOX-2 WHEEL DRIVE	128
BOLTING ARRANGEMENT-CENTRE HOUSING TO TRANS. CASE	129
BOLTING ARRANGEMENT-CENTRE HOUSING TO TRANS. CASE - WITH 12 SPEED SYNCHRO SHUTTLE TRANS WITH RANGE BOX	130
DRIVE SHAFT-CENTRE HOUSING TO TRANS. CASE	131
DRIVE SHAFT-CENTRE HOUSING TO TRANS. CASE	132
REAR AXLE-CENTRE HOUSING	133
REAR AXLE-SIDE COVER MK3A HYDRAULICS	134
REAR AXLE-SIDE COVER-PTO	135
REAR AXLE-SIDE COVER -IPTO - WITH 2 SPEED SHIFTABLE IPTO - UP TO SERIAL B49391	136
REAR AXLE-SIDE COVER - RESPONSE	137
REAR AXLE-PTO DRIVE MECHANISM-SINGLE SPEED - STANDARD PUMP	138
REAR AXLE-PTO DRIVE MECHANISM-TWO SPEED - HIGH FLOW PUMP	139
REAR AXLE-PTO DRIVE MECHANISM-TWO SPEED - 2 SPEED SHIFTABLE IPTO WITH HIGH FLOW PUMP	140
REAR AXLE-PTO DRIVE MECHANISM-TWO SPEED - 2 SPEED SHIFTABLE IPTO WITH INTERMEDIATE PUMP	141
REAR AXLE-IPTO CLUTCH AND VALVES - UP TO SERIAL NO. B32999	142
REAR AXLE-IPTO CLUTCH AND VALVES - 5 PLATES - WITH 2 SPEED SHIFTABLE IPTO	143
REAR AXLE-DIFFERENTIAL	144
REAR AXLE-DIFFERENTIAL LOCK MECHANISM	145

TABLE OF CONTENT

REAR AXLE-HOUSING	146
DIFFERENTIAL LOCK CONTROLS	147
PTO CONTROLS - TRACTORS WITH CAB UP TO SERIAL NUMBER S05489 - FOOTSTEP TRACTORS	148
PTO CONTROLS - TRACTORS WITH CAB - FROM SERIAL NUMBER S05490	149
PTO CONTROLS - WITH 12 SPEED SYNCHRO SHUTTLE TRANS WITH RANGE BOX	150
PTO CONTROLS - FORESTRY CAB	151
PTO CONTROLS - WITH 12 SPEED SYNCHRO SHUTTLE TRANS WITH RANGE BOX - FORESTRY CAB	152
DIPSTICK	153
DIPSTICK	154
BRAKES-DISC BRAKES - CONCENTRIC BRAKES - UP TO SERIAL NO V39466	155
BRAKES-DISC BRAKES - TANGENTIAL BRAKES - FROM SERIAL NO V39466	156
BRAKES-SLAVE CYLINDER - CONCENTRIC BRAKES - UP TO SERIAL NO V39466	157
BRAKES-SLAVE CYLINDER - CONCENTRIC BRAKES - UP TO SERIAL NO V39466	158
BRAKES-SLAVE CYLINDER - TANGENTIAL BRAKES - FROM SERIAL NO V39466	159
BRAKES-HYDRAULIC PIPES	160
BRAKES-MASTER CYLINDER - FOOTSTEP TRACTORS - UP TO SERIAL NUMBER S08141	161
BRAKES-MASTER CYLINDER - FOOTSTEP TRACTORS - FROM SERIAL NUMBER S08142	162
BRAKES-MASTER CYLINDER - TRACTORS WITH CAB - UP TO SERIAL NUMBER S08141	163
BRAKES-MASTER CYLINDER - TRACTORS WITH CAB - FROM SERIAL NUMBER S08142	164
BRAKES-MASTER CYLINDER - FROM SERIAL NUMBER S08142	165
BRAKES-MASTER CYLINDER	166
BRAKES-PEDALS	167
BRAKES-PEDALS - CABLE CONTROL	168
REAR WHEELS-SQUARE DISC	169
BRAKES-HANDBRAKE - FORESTRY CAB	170
REAR WHEELS-ROUND DISC - CAST DISC WHEELS	171
REAR WHEELS-ROUND DISC	172
REAR WHEELS-ROUND DISC	173
REAR WHEELS-PAVT	174
REAR WHEELS-PAVT	175
REAR WHEELS-PAVT	176
FRONT WHEELS	177
FRONT WHEELS-2 WHEEL DRIVE	178
FRONT WHEELS-2 WHEEL DRIVE	179
WEIGHTS-FRONT WHEELS - INNER.16AND 18WHEELS.	180
FRONT WHEELS-4 WHEEL DRIVE	181
FRONT WHEELS-4 WHEEL DRIVE	182
FRONT AXLE 2 WHEEL DRIVE-AXLE SUPPORT	183
FRONT AXLE 2 WHEEL DRIVE-CENTRE BEAM AND SPINDLES - HEAVY DUTY	184
FRONT AXLE 4 WHEEL DRIVE-SUPPORT	185
FRONT AXLE 4 WHEEL DRIVE-INSTALLATION	186
DRIVE SHAFT-4 WHEEL DRIVE	187
FRONT AXLE 4 WHEEL DRIVE-HOUSING	188
FRONT AXLE 4 WHEEL DRIVE-STEERING CYLINDERS	189
FRONT AXLE 4 WHEEL DRIVE-FINAL DRIVE	190
FRONT AXLE 4 WHEEL DRIVE-DIFFERENTIAL - NO SPIN	191
FRONT AXLE 4 WHEEL DRIVE-DIFFERENTIAL - WITH HYDROLOCK	192
STEERING-STEERING WHEEL AND COLUMN - ADJUSTABLE STEERING UPTO SERIAL P22200 CAB + SERIA L P34317 FOOTSTEP TRACTORS	193
STEERING-STEERING WHEEL AND COLUMN - ADJUSTABLE STEERING - TRACTORS WITH CAB FROM SERIA L NO. P22200	194

## TABLE OF CONTENT

STEERING-STEERING WHEEL AND COLUMN - ADJUSTABLE STEERING - FOOTSTEP TRACTORS FROM SERIAL NO. P34317	195
STEERING-STEERING WHEEL AND COLUMN - RIGID STEERING UPTO SERIAL NO. P34317	196
STEERING-STEERING WHEEL AND COLUMN - RIGID STEERING - FROM SERIAL NO. P34317	197
STEERING ORBITROL UNIT	198
STEERING HYDRAULIC LINES - TWO WHEEL DRIVE	199
STEERING HYDRAULIC LINES - 4 WHEEL DRIVE	200
STEERING HYDRAULIC LINES - TANDEM PUMP 4WD	201
STEERING HYDRAULIC LINES - TANDEM PUMP 4WD	202
STEERING HYDRAULIC LINES - TANDEM PUMP 2WD	203
STEERING HYDRAULIC LINES - TANDEM PUMP 2WD	204
STEERING AUXILIARY HYDRAULIC LINES - TANDEM PUMP	205
STEERING-STEERING PUMP - SUNDSTRAND HYDRATEC	206
STEERING-STEERING PUMP - AIR EQUIPEMENT	207
STEERING TANDEM PUMP - BOSCH	208
STEERING TANDEM PUMP - BOSCH	209
STEERING TANDEM PUMP - SUNDSTRAND HYDRATEC	210
STEERING-CYLINDER 2 WHEEL DRIVE	211
OIL COOLER-IPTO	212
OIL COOLER-LIVE PTO	213
OIL COOLER-LIVE PTO - WITH HYDROLOCK - FROM SERIAL NO. N04464	214
OIL COOLER - WITH HYDROLOCK - FROM SERIAL NO. N04464	215
HYDRAULIC LIFT PUMP-PUMP	216
HYDRAULIC LIFT PUMP-STRAINER UNIT	217
HYDRAULIC PUMP - HYDRAULIC LIFT	218
HYDRAULIC PUMP-STRAINER UNIT	219
HYDRAULIC LIFT-LIFT COVER	220
HYDRAULIC LIFT-LIFT ARMS	221
HYDRAULIC LIFT-QUADRANT SUPPORT	222
BRAKES-HANDBRAKE	223
REAR CONTROLS-DRAFT AND POSITION	224
REAR CONTROLS-DRAFT AND POSITION - FROM SERIAL NUMBER	225
REAR CONTROLS-SIDE CONSOLE	226
REAR CONTROLS-SIDE CONSOLE - FORESTRY CAB	227
REAR CONTROLS-SIDE CONSOLE - LESS SELECTOR MK3 A	228
REAR CONTROLS-RESPONSE	229
REAR CONTROLS-RESPONSE - EXTERNAL CONTROL	230
REAR CONTROLS-RESPONSE - FORESTRY CAB	231
REAR CONTROLS-RESPONSE	232
SPOOL VALVE-SPOOL VALVE INSTALLATION - SPRING RETURN TO NEUTRAL	233
SPOOL VALVE-SPOOL VALVE INSTALLATION - SPRING RETURN TO NEUTRAL	234
SPOOL VALVE-SPOOL VALVE INSTALLATION - WITH KICKOUT DETENT	235
SPOOL VALVE-SPOOL VALVE INSTALLATION - FORESTRY CAB	236
SPOOL VALVE-VALVE - WITH KICKOUT DETENT	237
SPOOL VALVE-VALVE - SPRING RETURN TO NEUTRAL	238
SPOOL VALVE-VALVE - WITH KICKOUT DETENT AND FLOAT	239
SPOOL VALVE-CONTROLS AND SUPPORT - WITH SPACER	240
SPOOL VALVE-CONTROLS AND SUPPORT - WITHOUT SPACER	241
TRAILER TIPPING	242
SPOOL VALVE-CONTROLS AND SUPPORT - WITHOUT SPOOL VALVES	243
SPOOL VALVE-CONTROLS AND SUPPORT - FORESTRY CAB	244
SPOOL VALVE-PIPES AND FITTINGS - COMBINED FLOW	245
SPOOL VALVE-PIPES AND FITTINGS - WITH AUXILIARY PUMP	246

## TABLE OF CONTENT

00

SPOOL VALVE-PIPES AND FITTINGS - WITH AUXILIARY PUMP	247
SPOOL VALVE-PIPES AND FITTINGS - WITH AUXILIARY PUMP LESS SPOOL VALVES	248
SPOOL VALVE-PIPES AND FITTINGS - WITH S.Y. PUMP	249
SPOOL VALVE-PIPES AND FITTINGS - FORESTRY CAB	250
SELECTOR VALVE MK3A-VALVE	251
SELECTOR VALVE MK3A-VALVE - WITH 12 SPEED SYNCHRO SHUTTLE TRANS WITH RANGE BOX	252
SELECTOR VALVE MK3A-BLANKING COVER	253
SELECTOR VALVE MK3A-CONTROLS	254
SELECTOR VALVE MK3A-CONTROLS	255
SELECTOR VALVE MK3A-CONTROLS - FOR HI-LINE CAB	256
SELECTOR VALVE MK3A-CONTROLS - FORESTRY CAB	257
TRAILER BRAKES-TRAILER BRAKE VALVE INSTALLATION	258
TRAILER BRAKES-TRAILER BRAKE VALVE INSTALLATION	259
TRAILER BRAKES-NON RETURN VALVE INSTALLATION	260
TRAILER BRAKES-VALVE	261
TRAILER BRAKES-VALVE	262
TRAILER BRAKES-VALVE - SAFETY VALVE	263
TRAILER BRAKES-PIPES AND FITTINGS	264
FRONT HITCH	265
LINKAGE-TOP LINK CAT 1 AND 2	266
LINKAGE-TOP LINK CAT 1 AND 2	267
LINKAGE-TOP LINK CAT 1 AND 2	268
TOP LINKS-STOWAGE HOOK	269
LINKAGE-LOWER LINKS CAT 1 AND 2 - QUICK ATTACH	270
LINKAGE-LOWER LINKS CAT 1 AND 2 - STANDARD - FOR SINGLE LIFT ASSISTOR RAM	271
LINKAGE-LOWER LINKS CAT 1 AND 2 - HINGED	272
LINKAGE-LOWER LINKS CAT 1 AND 2 - STANDARD	273
LINKAGE-LOWER LINKS CAT 1 AND 2 - QUICK ATTACH	274
LINKAGE-REMOTE LEVELLING CONTROL	275
LINKAGE-REMOTE LEVELLING CONTROL	276
LINKAGE-REMOTE LEVELLING CONTROL - FORESTRY CAB	277
SWINGING DRAWBAR-NORMAL DUTY	278
AUTOHITCH-HEAVY DUTY	279
SWINGING DRAWBAR	280
SWINGING DRAWBAR-HEAVY DUTY	281
AUTOHITCH-HEAVY DUTY	282
SHEET METAL-GRILLE	283
SHEET METAL-HOOD	284
SHEET METAL-PANELS	285
BULKHEAD - TRACTORS WITH CAB - UP TO SER. NO. P21356	286
BULKHEAD - TRACTORS WITH CAB - FROM TO SER. NO. P21356	287
BULKHEAD - FOOTSTEP TRACTORS - UP TO SERIAL NUMBER A29150	288
BULKHEAD - FOOTSTEP TRACTORS - FROM SERIAL NUMBER A29151	289
GUARD-PTO	290
TOOL BOX - WITH FOOTSTEPS	291
TOOL BOX - WITH FOOTSTEPS	292
TOOL BOX - WITH SAFETY FRAME	293
TOOL BOX - WITH CAB - UP TO SERIAL NUMBER...N11006	294
TOOL BOX - WITH CAB - FROM SERIAL NUMBER...N11006	295
S.M.V.SIGN-ATTACHMENT	296
EMBLEMS	297
DECALS-ENGLISH	298

## TABLE OF CONTENT

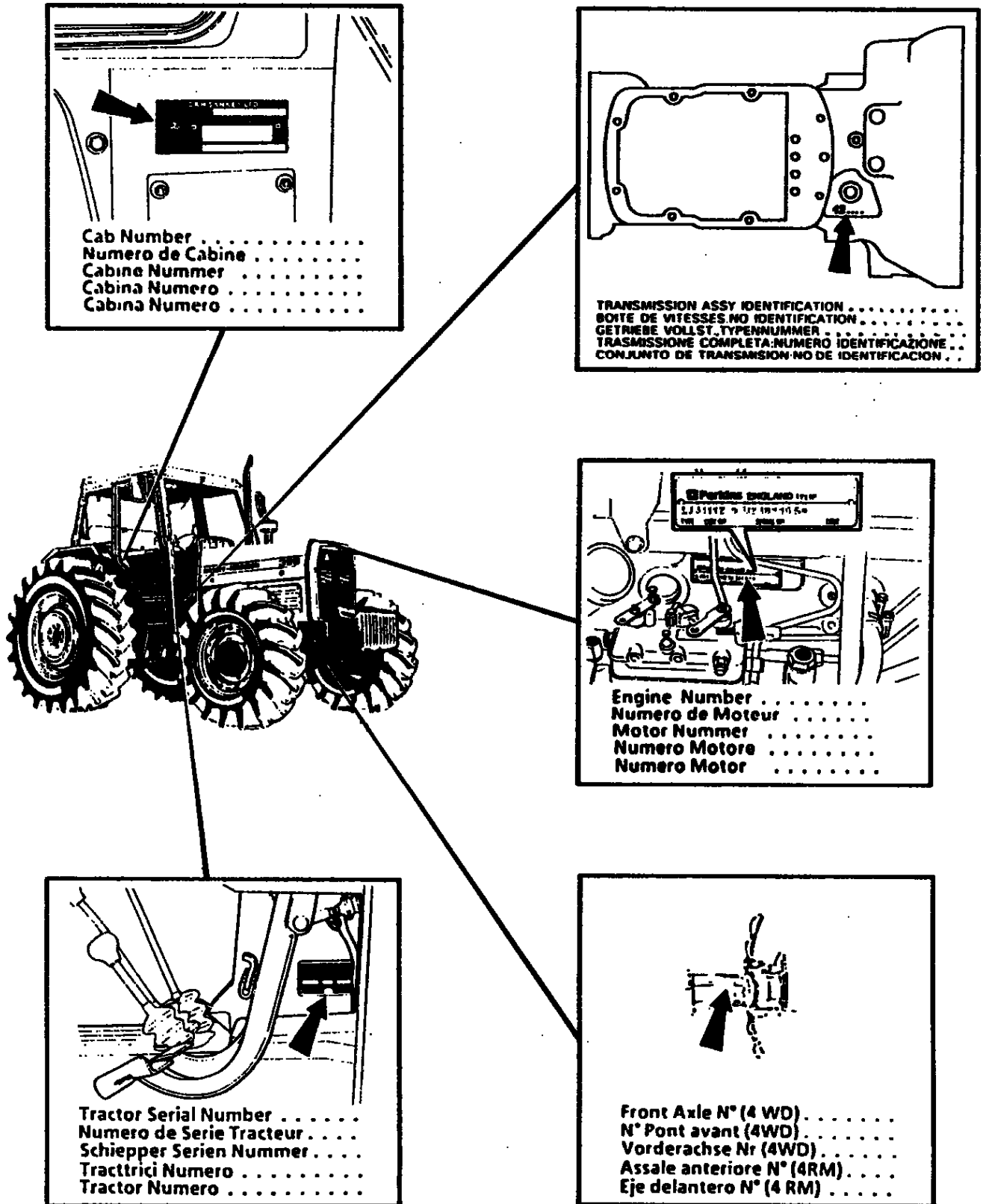
DECALS-ENGLISH	299
DECALS-FRENCH	300
DECALS-FRENCH	301
DECALS-ARABIC	302
DECALS-ARABIC	303
DECALS-SPANISH	304
DECALS-SPANISH	305
DECALS-ITALIAN	306
DECALS-ITALIAN	307
LITERATURE	308
FENDERS AND SUPPORTS-FLAT TOP - WITH 2 POST ROPS	309
FENDERS AND SUPPORTS-FLAT TOP	310
FENDERS AND SUPPORTS-SHELL	311
FENDERS AND SUPPORTS-SHELL - FENDER WITH 2 POST ROPS - WITHOUT SPACER- FROM 06- 1992.	312
FENDERS AND SUPPORTS-SHELL - WITH 2 POST ROPS - WITH SPACER - FROM 06-1992	313
FOOTSTEP - WITHOUT SPACER - UPTO SERIAL 07/1992.	314
FOOTSTEP - WITHOUT SPACER - SINGLE BATTERY- UP TO 07/1992.	315
FOOTSTEP - WITH SPACER - SINGLE BATTERY- UP TO 07/1992.	316
FOOTSTEP - WITH SPACER - DOUBLE BATTERY - UP TO 07/1992.	317
FOOTSTEP - WITHOUT SPACER - FROM SERIAL 07/1992 - LOW SHEET METAL - SINGLE BATTERY.	318
FOOTSTEP - WITH SPACER - FROM SERIAL 07/1992 - LOW SHEET METAL - DOUBLE BATTERY.	319
FOOTSTEP - WITH SPACER - FROM SERIAL 07/1992 - LOW SHEET METAL - SINGLE BATTERY.	320
FOOTSTEP - WITHOUT SPACER - FROM SERIAL 07/1992 - LOW SHEET METAL - SINGLE BATTERY.	321
SAFETY FRAME - TWO POST	322
SAFETY FRAME - FOUR POST	323
TRACTOR CAB-MOUNTS	324
TRACTOR CAB-AIR INTAKE - UP TO SERIAL NO. P21356	325
TRACTOR CAB-HEATER - TRACTORS WITH CAB - UP TO SER. NO. P21356	326
TRACTOR CAB-HEATER - TRACTORS WITH CAB - FROM TO SER. NO. P21356	327
TRACTOR CAB-HEATER - UP TO SERIAL NO. P21356	328
TRACTOR CAB-HEATER - FROM SERIAL NO. P21356	329
TRACTOR CAB-HEATER HOSES	330
TRACTOR CAB-HEATER HOSES - WITH ROOF HEATER	331
TRACTOR CAB-FRAME - UP TO SERIAL NO.N11006	332
TRACTOR CAB-FRAME - FROM SERIAL NO.N11006	333
TRACTOR CAB-FRAME - FORESTRY CAB	334
TRACTOR CAB-DOORS - UP TO SERIAL NO.N11006	335
TRACTOR CAB-DOORS - FROM SERIAL NO.N11006	336
TRACTOR CAB-WINDOWS - UP TO SERIAL NO.N11006	337
TRACTOR CAB-WINDOWS - FROM SERIAL NO.N11006	338
TRACTOR CAB-WINDOWS - FORESTRY CAB	339
TRACTOR CAB-ROOF - UP TO SERIAL NO. P21356	340
TRACTOR CAB-ROOF - FROM SERIAL NO. P21356	341
TRACTOR CAB-ROOF - ROOF HATCH - UP TO SERIAL NO. P21356	342
TRACTOR CAB-ROOF - ROOF HATCH - FROM SERIAL NO. P21356	343
TRACTOR CAB-ROOF EQUIPMENT - VENTILATION - FROM SERIAL NO. P21356	344
TRACTOR CAB-AIR CONDITIONING	345
TRACTOR CAB-AIR CONDITIONER - EVAPORATOR	346
TRACTOR CAB-BLOWER UNIT	347
TRACTOR CAB-FLOOR PANELS	348

## TABLE OF CONTENT

TRACTOR CAB-FLOOR PANELS - FOR HIGH LINE CAB	349
TRACTOR CAB-FLOOR PANELS - FORESTRY CAB	350
TRACTOR CAB-CAB INSULATION	351
TRACTOR CAB-TRIM - NOT FOR HIGH LINE CAB	352
TRACTOR CAB-TRIM - FOR HIGH LINE CAB	353
TRACTOR CAB-TRIM - FORESTRY CAB	354
TRACTOR CAB-ELECTRICAL WIRING	355
TRACTOR CAB-WINDSCREEN WIPER AND MIRRORS	356
TRACTOR CAB-CAB LIGHTING - UP TO SERIAL NO. P21356	357
TRACTOR CAB-CAB LIGHTING - FROM SERIAL NO. P21356	358
TRACTOR CAB-LIGHTING EQUIPMENT	359
TRACTOR CAB-RADIO INSTALLATION	360
SEAT-GRAMMER - CAB MACHINE	361
SEAT-GRAMMER - FOOTSTEP TRACTORS	362
SEAT-GRAMMER - FOOTSTEP TRACTORS	363
STATIC SEAT	364
SEAT-BOSTROM	365
SEAT-BOSTROM - VIKING - HIGH LINE CAB	366
SEAT-BOSTROM - FORESTRY CAB	367
SEAT-INTEGRAL TRIM - FOOTSTEP TRACTORS	368
LIGHTING EQUIPMENT-FRONT	369
LIGHTING EQUIPMENT-REAR - CAB MACHINE. UPTO SERIAL NO.V52268	370
LIGHTING EQUIPMENT-REAR - CAB MACHINE. FROM SERIAL NO.V52268	371
LIGHTING EQUIPMENT-REAR - CAB MACHINE. FROM SERIAL NO.V52268- NORTH AMERICA ONLY	372
LIGHTING EQUIPMENT-REAR - SHELL FENDERS ONLY. UPTO SERIAL NO.V52268	373
LIGHTING EQUIPMENT-REAR - SHELL FENDERS ONLY. FROM SERIAL NO.V52268- UP TO SERIAL NUMBER A29150	374
LIGHTING EQUIPMENT-REAR - FOOTSTEP TRACTORS - FROM SERIAL NUMBER A29151	375
LIGHTING EQUIPMENT-REAR - FOOTSTEP TRACTORS - FROM SERIAL NUMBER A29151 - NATO ONLY	376
LIGHTING EQUIPMENT-REAR - FLAT TOP FENDERS ONLY. UPTO SERIAL NO.V52268	377
LIGHTING EQUIPMENT-REAR - FLAT TOP FENDERS ONLY. FROM SERIAL NO.V52268 - UP TO SERIAL NUMBER A29150	378
LIGHTING EQUIPMENT-REAR - FOOTSTEP TRACTORS - FROM SERIAL NUMBER A29151	379
LIGHTING EQUIPMENT-REAR - FOOTSTEP TRACTORS - FROM SERIAL NUMBER A29151	380
LIGHTING EQUIPMENT-REAR - FOOTSTEP TRACTORS - FROM SERIAL NUMBER A29151 - NATO ONLY	381
HEXAGON HEAD BOLTS - DIMENSIONS:- 'X' = DIAMETER, 'Y' = OVERALL LENGTH, 'Z' = THREAD LENGTH,(E.G. M8 X 35/22)	382
CARRIAGE BOLTS - DIMENSIONS:- 'X' = DIAMETER, 'Y' = OVERALL LENGTH, 'Z' = THREAD LENGTH,(E.G. M8 X 35/22)	383
HEXAGON SETSCREWS - DIMENSIONS:- 'X' = DIAMETER, 'Y' = OVERALL LENGTH, 'Z' = THREAD LENGTH,(E.G. M8 X 35/22)	384
MISCELLANEOUS SCREWS - DIMENSIONS:- 'X' = DIAMETER, 'Y' = OVERALL LENGTH, 'Z' = THREAD LENGTH,(E.G. M8 X 35/22)	385
HEXAGON NUTS-MISCELLANEOUS	386
WASHERS	387



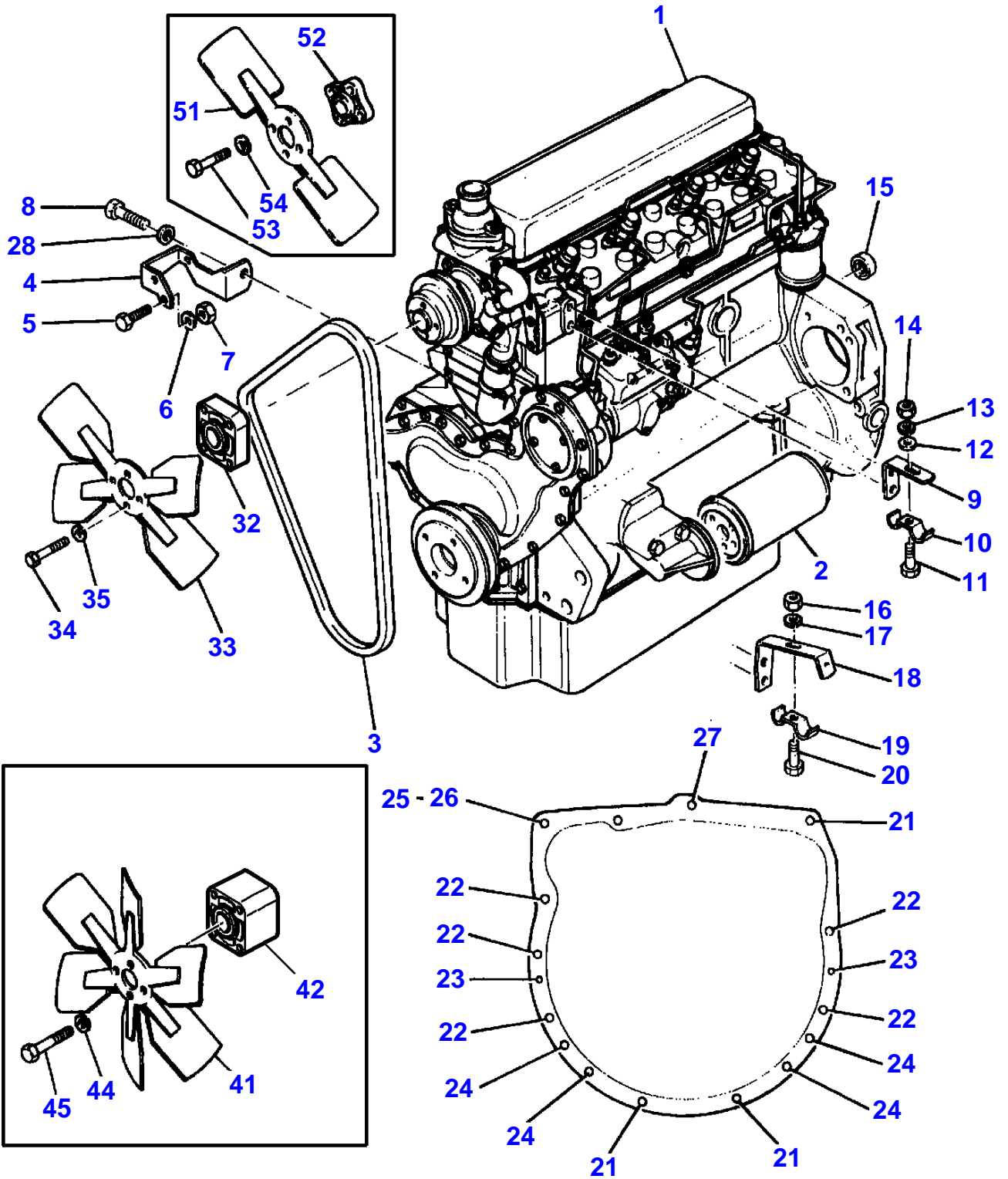
3-0001-085-B



SECTION DIVIDER

Description	Comments
.	For UK only or any text in English only SERIAL NUMBERS .....
.	For France only or any text in French only NUMEROS DE SERIES
.	For Germany only or any text in German only SERIEN NUMMER .....
.	For Italy only or any text in Italian only MATR.O NUMERO .....
.	E NUMERO SERIE .....

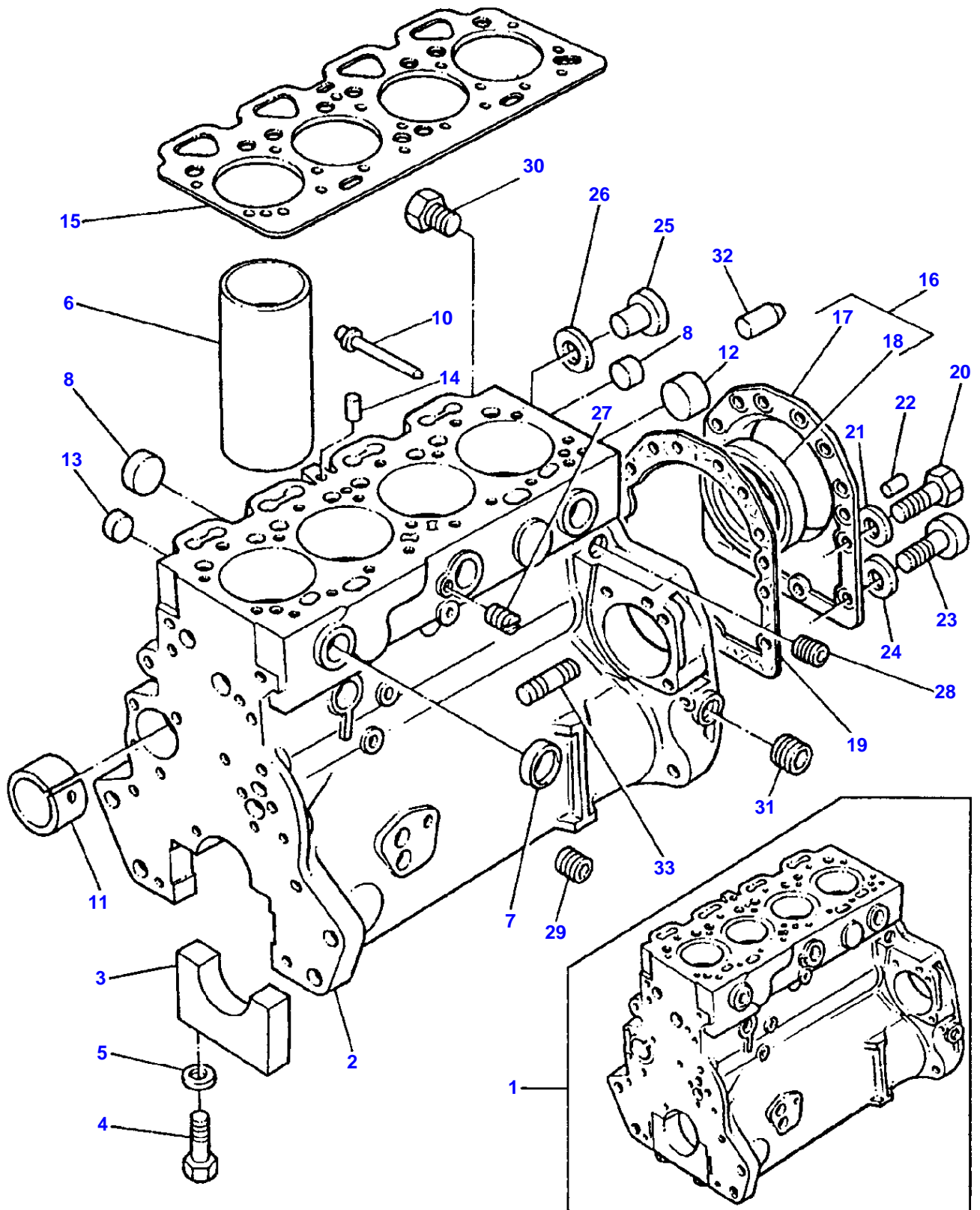
3-AA02-013-D



ENGINE INSTALLATION

Item	Part Number	Qty	Description	Comments
1	1694429M91	1	Engine	PEL - LD31140
	3476390M91	1	Short Engine	PEL - LD39312
	3612674M91	1	Engine	(A) PEL - LD31248
1	3478237M91	1	Short Engine	(A) PEL - LD39303
2	1447048M1	1	Oil Filter	
3	1693745M1	1	V Belt	
	1687610M91	1	Kit, Belt	(A)
4	1694276M4	1	Bracket	
5	376334X1	1	Screw Unc	
6	353755X1	1	Washer	
7	355565X1	1	Nut Unc	
8	353536X1	1	Screw Unf	
9	1696465M2	1	Bracket	Up to Serial or Engine Number .....
10	1696871M1	1	Clip	Up to Serial or Engine Number .....
11	339123X1	1	Screw Metric	Up to Serial or Engine Number .....
12	390972X1	1	Washer Metric	Up to Serial or Engine Number .....
13	339374X1	1	Lock Washer	Up to Serial or Engine Number .....
14	339169X1	1	Nut Metric	Up to Serial or Engine Number .....
15	828123M2	1	Bearing Assy	
16	339030X1	1	Nut Metric	From Serial or Engine Number .....
17	339375X1	1	Lock Washer	From Serial or Engine Number .....
18	3612888M1	1	Bracket	From Serial or Engine Number .....
19	1876383M1	1	Clamp	From Serial or Engine Number .....
20	3001753X1	1	Screw Metric	From Serial or Engine Number .....
21	3019851X1	3	Bolt Metric	
22	3019853X1	5	Bolt Metric	
23	825302M1	2	Dowel	
24	3019855X1	4	Bolt Metric	
25	3019878X1	1	Bolt Metric	
26	3019862X1	1	Nut Metric	
27	3019858X1	1	Bolt Metric	
28	353756X1	1	Washer	
32	3638564M1	1	Spacer	Thickness 17,7MM
33	1695933M1	1	Fan	
34	353521X1	4	Bolt Unf	
35	353446X1	4	Lock Washer	
41	3637938M1	1	Fan	(A)
42	743046M1	1	Extension	(A)
	736519M1	1	Spacer	(A) Up to Serial or Engine Number B14049
42	3759095M1	1	Spacer	(A) From Serial or Engine Number B14050 Thickness 40,7MM
44	353446X1	4	Lock Washer	(A)
45	353527X1	4	Screw	(A) Up to Serial or Engine Number B14049
45	353529X1	4	Bolt Unf	(A) From Serial or Engine Number B14050
51	3614283M1	1	Fan	(B)
52	3638564M1	1	Spacer	(B) Thickness 17,7MM
53	353521X1	4	Bolt Unf	(B)
54	353446X1	4	Lock Washer	(B) ..
				(A) WITH AIR CONDITIONING
				(B) SCANDINAVIA ONLY

L-0560-18M-A



CYLINDER BLOCK - A4.236 ENGINE

Item	Part Number	Qty	Description	Comments
				A4.236 ENGINE
1	3637379M91	1	Cylinder Block	
2		1	Cylinder Block	(1) Not serviced, order REF.1
3		5	Bearing Cap	(1) Not serviced, order REF.1
4	1476108X1	10	Screw	(1)
5	733072M1	10	Ring	(1)
6	3637331M1	4	Liner	(1) (A)
6	3637332M1	X	Liner	(B)
7	731354M1	6	Plug	(1)
8	735944M1	4	Plug	(1)
9	731354M1	2	Plug	(1)
10	1476282X1	1	Plug	(1)
11	3638579M1	1	Bush	(1) Repairs and replaces 3638093M1 Repairs and replaces 734883M1
12	733705M1	1	Plug	
13	735869M1	4	Plug	
14	736868M1	1	Plug	
15	3638358M1	1	Head Gasket	Repairs and replaces 3637341M1
16	3638347M91	1	Housing	Repairs and replaces 748163M91
17		1	Housing	(16) Not serviced, order REF.16
18	1447691M1	1	Seal	(16)
19	740828M1	1	Joint	
20	353519X1	10	Screw Unf	
21	375703X1	10	Washer	
22	731947M1	2	Dowel	
23	357987X1	2	Bolt	
24	745015M1	2	Washer	
25	376180X1	1	Plug	
26	376196X1	1	Washer	
27	748040M1	1	Plug	
28	733067M1	2	Plug	
29	3638540M1	1	Plug	
30	3637016M1	2	Plug	
31	733067M1	1	Plug	
32	745017M1	1	Pointer	
33	731862M1	3	Stud	

(A)  
PRESS FIT

(B)  
SLIP FIT

**Buy Now**



Our support email:

[ebooklibonline@outlook.com](mailto:ebooklibonline@outlook.com)