

Page Title	Page Number
SECTION DIVIDER	1
ENGINE INSTALLATION - A6.354.4 ENGINE	2
CYLINDER BLOCK - A6.354.4 ENGINE	3
CRANKSHAFT, PISTONS AND CONNECTING RODS - A6.354.4 ENGINE	4
CYLINDER HEAD - A6.354.4 ENGINE	5
ROCKER SHAFT - A6.354.4 ENGINE	6
TIMING GEAR AND CAMSHAFT - A6.354.4 ENGINE	7
AUXILIARY DRIVE - A6.354.4 ENGINE	8
FUEL INJECTION EQUIPMENT (DIESEL) - A6.354.4 ENGINE	9
LUBRICATING OIL SUMP - A6.354.4 ENGINE	10
LUBRICATING OIL FILTER AND INTEGRAL COOLER - A6.354.4 ENGINE	11
WATER PUMP, THERMOSTAT AND HEAT EXCHANGER - A6.354.4 ENGINE	12
LOW PRESSURE FUEL SYSTEM - A6.354.4 ENGINE	13
ALTERNATOR POSITIONER - A6.354.4 ENGINE	14
JOINTS AND GASKETS - A6.354.4 ENGINE	15
ENGINE ELECTRICS - UP TO SERIAL NO. V52268	16
ENGINE ELECTRICS - FROM SERIAL NO. V52268	17
STARTER - PERKINS	18
STARTER-LUCAS	19
ALTERNATOR-LUCAS	20
ALTERNATOR-LUCAS - TRACTOR WITH CAB	21
ALTERNATOR	22
ALTERNATOR-MAGNETI MARELLI	23
BATTERIES AND CABLES - FOOTSTEP TRACTORS - DOUBLE BATTERY - UP TO SERIAL NUMBER	24
BATTERIES AND CABLES - TRACTORS WITH CAB - DOUBLE BATTERY	25
HEATER-ENGINE BLOCK	26
COOLING SYSTEM	27
AIR CONDITIONER	28
AIR CONDITIONER - COMPRESSOR	29
FUEL SYSTEM-FUEL TANK AND ATTACHMENTS - UP TO SERIAL NO. S19230	30
AIR FILTER-OIL BATH AIR FILTER	31
AIR FILTER-DRY - DUAL ELEMENT - AIR INTAKE - OVER BONNET	32
AIR FILTER-DRY - DUAL ELEMENT - AIR INTAKE - UNDER BONNET	33
EXHAUST SYSTEM-VERTICAL	34
EXHAUST SYSTEM-HORIZONTAL	35
THROTTLE CONTROLS	36
CONSOLE ELECTRICS-FOOTSTEP MODELS - UP TO SERIAL NO. V52268	37
CONSOLE ELECTRICS-FOOTSTEP MODELS - FROM SERIAL NO. V52268	38
CONSOLE ELECTRICS-FOOTSTEP MODELS - FROM SERIAL NO.V52268 - NATO ONLY	39
CONSOLE ELECTRICS-CAB MODELS - CAB MACHINE. UPTO SERIAL NO.V52268	40
CONSOLE ELECTRICS-CAB MODELS - CAB MACHINE. FROM SERIAL NO.V52268 - ALL MARKETS EXCEPT NORTH AMERICA	41
CONSOLE ELECTRICS-CAB MODELS - CAB MACHINE. FROM SERIAL NO.V52268-NORTH AMERICA ONLY	42
INSTRUMENT PANEL AND INSTRUMENTS	43
CLUTCH-PEDAL	44
CLUTCH-SPLIT TORQUE CLUTCH - 13/330MM PITCH CIRCLE DIAMETER	45
12 SPEED SYNCHROMESH TRANSMISSION-HOUSING - UP TO SERIAL NO B18008	46
12 SPEED SYNCHROMESH TRANSMISSION-FORK AND GEARSHIFT RAIL	47
12 SPEED SYNCHROMESH TRANSMISSION-INPUT SHAFT	48
12 SPEED SYNCHROMESH TRANSMISSION-MAIN SHAFT	49
12 SPEED SYNCHROMESH TRANSMISSION-COUNTER SHAFT	50

EPICYCLIC UNIT-HEAVY DUTY	51
SHIFT LEVERS-12 SPEED TRANSMISSION - NOT FOR HIGH LINE CAB	52
SHIFT LEVERS-12 SPEED TRANSMISSION - WITH CAB	53
SHIFT LEVERS-MULTIPOWER TRANSMISSION - FOR HIGH LINE CAB	54
4 WHEEL DRIVE CONTROLS	55
TRANSFER GEAR BOX-4 WHEEL DRIVE - UP TO SERIAL NO..... - T/F CLUTCH	56
SPACER-2 WHEEL DRIVE	57
BOLTING ARRANGEMENT-CENTRE HOUSING TO TRANS. CASE	58
DRIVE SHAFT-CENTRE HOUSING TO TRANS. CASE	59
REAR AXLE-CENTRE HOUSING	60
REAR AXLE-SIDE COVER MK3A HYDRAULICS	61
REAR AXLE-SIDE COVER -IPTO - UP TO SERIAL NO. B32999	62
REAR AXLE-SIDE COVER - RESPONSE	63
REAR AXLE-PTO DRIVE MECHANISM-TWO SPEED	64
REAR AXLE-IPTO CLUTCH AND VALVES - UP TO SERIAL NO. B32999	65
REAR AXLE-DIFFERENTIAL	66
REAR AXLE-DIFFERENTIAL LOCK MECHANISM	67
REAR AXLE-HOUSING	68
DIFFERENTIAL LOCK CONTROLS	69
DIPSTICK	70
PTO CONTROLS - TRACTORS WITH CAB - UP TO SERIAL NUMBER	71
PTO CONTROLS - TRACTORS WITH CAB - FROM SERIAL NUMBER S05490	72
BRAKES-DISC BRAKES - CONCENTRIC BRAKES - UP TO SERIAL NO V39466	73
BRAKES-DISC BRAKES - TANGENTIAL BRAKES - FROM SERIAL NO V39466	74
BRAKES-SLAVE CYLINDER - CONCENTRIC BRAKES - UP TO SERIAL NO V39466	75
BRAKES-SLAVE CYLINDER - CONCENTRIC BRAKES - UP TO SERIAL NO V39466	76
BRAKES-SLAVE CYLINDER - TANGENTIAL BRAKES - FROM SERIAL NO V39466	77
BRAKES-HYDRAULIC PIPES	78
BRAKES-MASTER CYLINDER - FOOTSTEP TRACTORS	79
BRAKES-MASTER CYLINDER - TRACTORS WITH CAB	80
BRAKES-MASTER CYLINDER	81
BRAKES-PEDALS	82
BRAKES-HANDBRAKE	83
REAR WHEELS-SQUARE DISC	84
REAR WHEELS-PAVT	85
REAR WHEELS-PAVT	86
FRONT WHEELS-2 WHEEL DRIVE	87
WEIGHTS-FRONT WHEELS - INNER.16AND 18WHEELS.	88
FRONT WHEELS-4 WHEEL DRIVE	89
FENDERS - FRONT - 2 WHEEL DRIVE	90
FRONT AXLE 2 WHEEL DRIVE-AXLE SUPPORT	91
FRONT AXLE 2 WHEEL DRIVE-CENTRE BEAM AND SPINDLES - HEAVY DUTY	92
FRONT AXLE 4 WHEEL DRIVE-SUPPORT	93
FRONT AXLE 4 WHEEL DRIVE-INSTALLATION	94
DRIVE SHAFT-4 WHEEL DRIVE	95
FRONT AXLE 4 WHEEL DRIVE-HOUSING	96
FRONT AXLE 4 WHEEL DRIVE-STEERING CYLINDERS	97
FRONT AXLE 4 WHEEL DRIVE-FINAL DRIVE	98
FRONT AXLE 4 WHEEL DRIVE-DIFFERENTIAL - WITHOUT HYDROLOCK	99
FRONT AXLE 4 WHEEL DRIVE-DIFFERENTIAL - WITH HYDROLOCK	100
STEERING-STEERING WHEEL AND COLUMN - ADJUSTABLE STEERING UPTO SERIAL P22200 CAB + SERIA L P34317 FOOTSTEP TRACTORS	101
STEERING-STEERING WHEEL AND COLUMN - ADJUSTABLE STEERING - TRACTORS WITH CAB FROM SERIA L NO. P22200	102
STEERING-STEERING WHEEL AND COLUMN - ADJUSTABLE STEERING - FOOTSTEP	103

TABLE OF CONTENT

TRACTORS FROM SERIA L NO. P34317	---
STEERING-STEERING WHEEL AND COLUMN - RIGID STEERING UPTO SERIAL NO. P34317	104
STEERING-STEERING WHEEL AND COLUMN - RIGID STEERING - FROM SERIAL NO. P34317	105
STEERING ORBITROL UNIT	106
STEERING HYDRAULIC LINES - TANDEM PUMP 2WD	107
STEERING HYDRAULIC LINES - TANDEM PUMP 4WD	108
STEERING AUXILIARY HYDRAULIC LINES - TANDEM PUMP	109
STEERING TANDEM PUMP - SUNDSTRAND HYDRATEC	110
STEERING TANDEM PUMP - SUNDSTRAND HYDRATEC	111
STEERING-CYLINDER 2 WHEEL DRIVE	112
OIL COOLER	113
OIL COOLER - WITH HYDROLOCK - FROM SERIAL NO. N04464	114
HYDRAULIC LIFT PUMP-PUMP	115
HYDRAULIC LIFT PUMP-STRAINER UNIT	116
HYDRAULIC LIFT-LIFT COVER	117
HYDRAULIC LIFT-LIFT ARMS	118
HYDRAULIC LIFT-QUADRANT SUPPORT	119
REAR CONTROLS-DRAFT AND POSITION	120
REAR CONTROLS-RESPONSE	121
REAR CONTROLS-RESPONSE - EXTERNAL CONTROL	122
SPOOL VALVE-SPOOL VALVE INSTALLATION - SPRING RETURN TO NEUTRAL	123
SPOOL VALVE-SPOOL VALVE INSTALLATION - SPRING RETURN TO NEUTRAL	124
SPOOL VALVE-SPOOL VALVE INSTALLATION - WITH KICKOUT DETENT	125
SPOOL VALVE-VALVE - SPRING RETURN TO NEUTRAL	126
SPOOL VALVE-VALVE - WITH KICKOUT DETENT	127
SPOOL VALVE-VALVE - WITH KICKOUT DETENT AND FLOAT	128
SPOOL VALVE-CONTROLS AND SUPPORT - WITH SPACER	129
SPOOL VALVE-CONTROLS AND SUPPORT - WITHOUT SPOOL VALVES	130
SPOOL VALVE-PIPES AND FITTINGS - COMBINED FLOW	131
SPOOL VALVE-PIPES AND FITTINGS - WITH AUXILIARY PUMP	132
SPOOL VALVE-PIPES AND FITTINGS - WITH AUXILIARY PUMP	133
SPOOL VALVE-PIPES AND FITTINGS - WITH AUXILIARY PUMP LESS SPOOL VALVES	134
SELECTOR VALVE MK3A-VALVE	135
SELECTOR VALVE MK3A-BLANKING COVER	136
SELECTOR VALVE MK3A-CONTROLS - UP TO SERIAL NO. B49231	137
SELECTOR VALVE MK3A-CONTROLS	138
SELECTOR VALVE MK3A-CONTROLS - FOR HI-LINE CAB	139
TRAILER BRAKES-TRAILER BRAKE VALVE INSTALLATION	140
TRAILER BRAKES-TRAILER BRAKE VALVE INSTALLATION	141
TRAILER BRAKES-NON RETURN VALVE INSTALLATION	142
TRAILER BRAKES-VALVE	143
TRAILER BRAKES-VALVE	144
TRAILER BRAKES-VALVE - SAFETY VALVE	145
TRAILER BRAKES-PIPES AND FITTINGS	146
TRAILER TIPPING	147
FRONT HITCH	148
LINKAGE-TOP LINK CAT 1 AND 2	149
TOP LINKS-STOWAGE HOOK	150
LINKAGE-LOWER LINKS CAT 1 AND 2 - TELESCOPIC	151
LINKAGE-LOWER LINKS CAT 1 AND 2 - QUICK ATTACH - FOR DOUBLE LIFT ASSISTOR RAM	152
LINKAGE-LOWER LINKS CAT 1 AND 2 - STANDARD - FOR DOUBLE LIFT ASSISTOR RAM	153

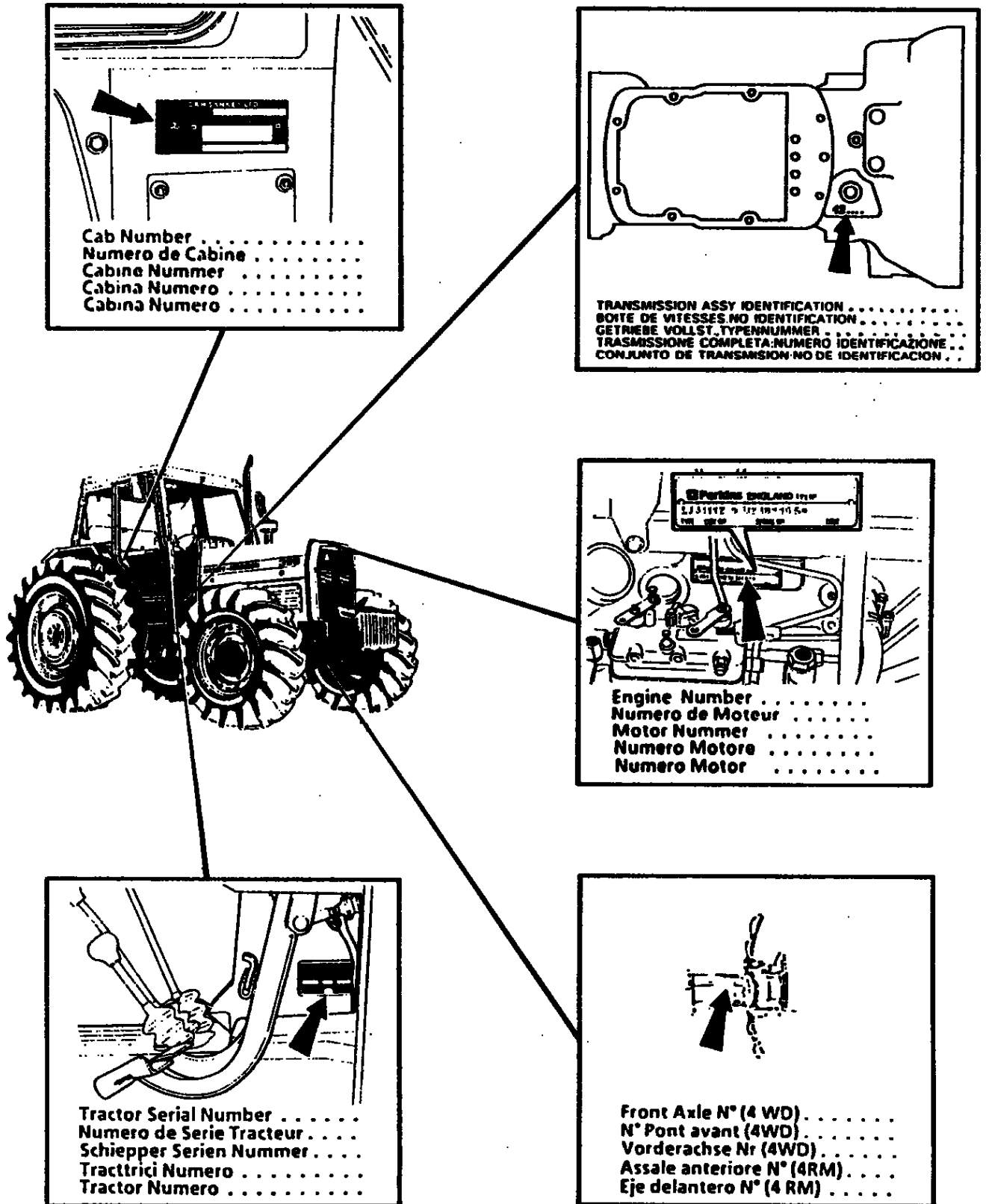
TABLE OF CONTENT

LINKAGE-LOWER LINKS CAT 1 AND 2	154
LINKAGE-REMOTE LEVELLING CONTROL	155
SWINGING DRAWBAR	156
SHEET METAL-GRILLE	157
SHEET METAL-HOOD	158
SHEET METAL-PANELS	159
BULKHEAD - TRACTORS WITH CAB - UP TO SER. NO. P21356	160
BULKHEAD - TRACTORS WITH CAB - FROM TO SER. NO. P21356	161
BULKHEAD - FOOTSTEP TRACTORS	162
GUARD-PTO	163
TOOL BOX - WITH FOOTSTEPS	164
TOOL BOX - WITH SAFETY FRAME	165
TOOL BOX - WITH CAB - UP TO SERIAL NUMBER..N11006	166
TOOL BOX - WITH CAB - FROM SERIAL NUMBER...N11006	167
S.M.V.SIGN-ATTACHMENT	168
EMBLEMS	169
DECALS-ENGLISH	170
DECALS-ENGLISH	171
DECALS-FRENCH	172
DECALS-FRENCH	173
DECALS-ARABIC	174
DECALS-ARABIC	175
DECALS-SPANISH	176
DECALS-SPANISH	177
DECALS-ITALIAN	178
DECALS-ITALIAN	179
LITERATURE	180
FENDERS AND SUPPORTS-FLAT TOP	181
FENDERS AND SUPPORTS-FLAT TOP - WITH 2 POST ROPS	182
FENDERS AND SUPPORTS-SHELL	183
FOOTSTEP - WITH SPACER - UP TO 07/1992.	184
SAFETY FRAME - TWO POST	185
SAFETY FRAME - FOUR POST	186
TRACTOR CAB-MOUNTS	187
TRACTOR CAB-AIR INTAKE - UP TO SERIAL NO. P21356	188
TRACTOR CAB-HEATER - TRACTORS WITH CAB - UP TO SER. NO. P21356	189
TRACTOR CAB-HEATER - TRACTORS WITH CAB - FROM TO SER. NO. P21356	190
TRACTOR CAB-HEATER - UP TO SERIAL NO. P21356	191
TRACTOR CAB-HEATER - FROM SERIAL NO. P21356	192
TRACTOR CAB-HEATER HOSES	193
TRACTOR CAB-HEATER HOSES - WITH ROOF HEATER	194
TRACTOR CAB-FRAME - UP TO SERIAL NO.N11006	195
TRACTOR CAB-FRAME - FROM SERIAL NO.N11006 - HIGH LINE CAB	196
TRACTOR CAB-DOORS - UP TO SERIAL NO.N11006	197
TRACTOR CAB-DOORS - FROM SERIAL NO.N11006	198
TRACTOR CAB-WINDOWS - UP TO SERIAL NO.N11006	199
TRACTOR CAB-WINDOWS - FROM SERIAL NO.N11006	200
TRACTOR CAB-ROOF - UP TO SERIAL NO. P21356	201
TRACTOR CAB-ROOF - FROM SERIAL NO. P21356	202
TRACTOR CAB-ROOF - ROOF HATCH - UP TO SERIAL NO. P21356	203
TRACTOR CAB-ROOF - ROOF HATCH - FROM SERIAL NO. P21356	204
TRACTOR CAB-ROOF EQUIPMENT - VENTILATION - FROM SERIAL NO. P21356	205
TRACTOR CAB-AIR CONDITIONING	206
TRACTOR CAB-AIR CONDITIONER - EVAPORATOR	207

TABLE OF CONTENT

TRACTOR CAB-FLOOR PANELS	208
TRACTOR CAB-FLOOR PANELS - FOR HIGH LINE CAB	209
TRACTOR CAB-CAB INSULATION - UP TO SERIAL NO.N11006	210
TRACTOR CAB-TRIM - NOT FOR HIGH LINE CAB	211
TRACTOR CAB-TRIM - FOR HIGH LINE CAB	212
TRACTOR CAB-ELECTRICAL WIRING	213
TRACTOR CAB-WINDSCREEN WIPER AND MIRRORS	214
TRACTOR CAB-CAB LIGHTING - UP TO SERIAL NO. P21356	215
TRACTOR CAB-CAB LIGHTING - FROM SERIAL NO. P21356	216
TRACTOR CAB-LIGHTING EQUIPMENT	217
TRACTOR CAB-RADIO INSTALLATION	218
SEAT-GRAMMER - CAB MACHINE	219
SEAT-GRAMMER - FOOTSTEP TRACTORS	220
SEAT-GRAMMER - FOOTSTEP TRACTORS	221
STATIC SEAT	222
SEAT-BOSTROM	223
SEAT-BOSTROM - VIKING - HIGH LINE CAB	224
SEAT-INTEGRAL TRIM - FOOTSTEP TRACTORS	225
LIGHTING EQUIPMENT-FRONT	226
LIGHTING EQUIPMENT-REAR - CAB MACHINE. UPTO SERIAL NO.V52268	227
LIGHTING EQUIPMENT-REAR - CAB MACHINE. FROM SERIAL NO.V52268	228
LIGHTING EQUIPMENT-REAR - CAB MACHINE. FROM SERIAL NO.V52268- NORTH AMERICA ONLY	229
LIGHTING EQUIPMENT-REAR - FLAT TOP FENDERS ONLY. UPTO SERIAL NO.V52268	230
LIGHTING EQUIPMENT-REAR - FLAT TOP FENDERS ONLY. FROM SERIAL NO.V52268	231
LIGHTING EQUIPMENT-REAR - SHELL FENDERS ONLY. FROM SERIAL NO.V52268- UP TO SERIAL NUMBER A29150	232
HEXAGON HEAD BOLTS - DIMENSIONS:- 'X' = DIAMETER, 'Y' = OVERALL LENGTH, 'Z' = THREAD LENGTH,(E.G. M8 X 35/22)	233
CARRIAGE BOLTS - DIMENSIONS:- 'X' = DIAMETER, 'Y' = OVERALL LENGTH, 'Z' = THREAD LENGTH,(E.G. M8 X 35/22)	234
HEXAGON SETSCREWS - DIMENSIONS:- 'X' = DIAMETER, 'Y' = OVERALL LENGTH, 'Z' = THREAD LENGTH,(E.G. M8 X 35/22)	235
MISCELLANEOUS SCREWS - DIMENSIONS:- 'X' = DIAMETER, 'Y' = OVERALL LENGTH, 'Z' = THREAD LENGTH,(E.G. M8 X 35/22)	236
HEXAGON NUTS-MISCELLANEOUS	237
WASHERS	238

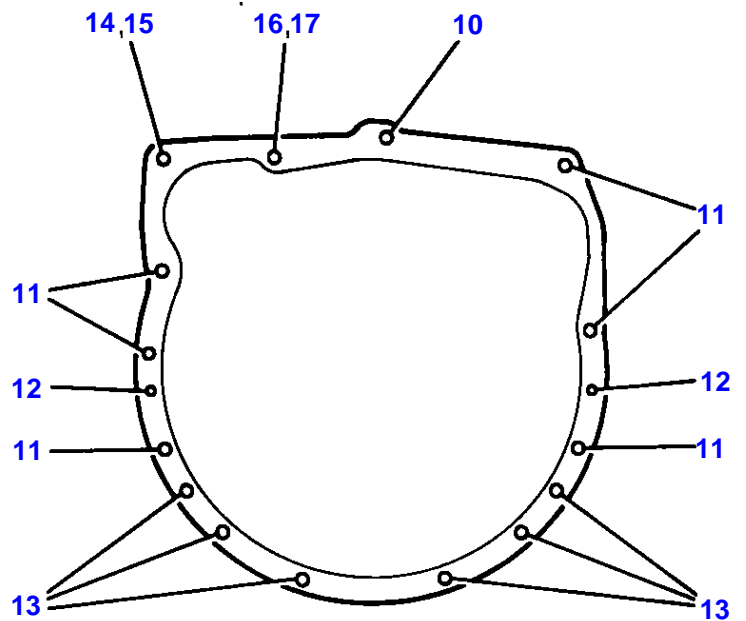
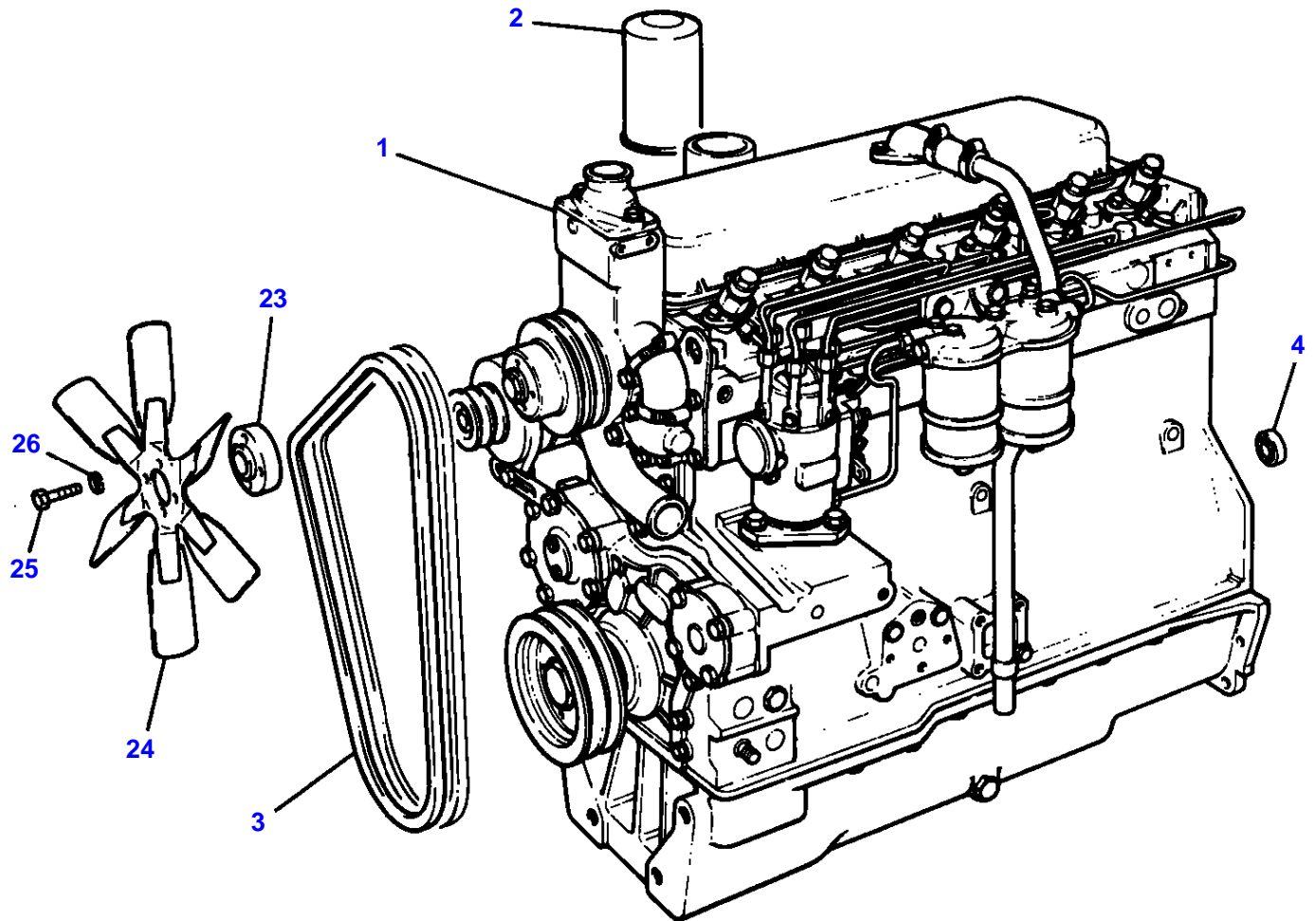
3-0001-085-B



SECTION DIVIDER

Description	Comments
.	For UK only or any text in English only SERIAL NUMBERS
.	For France only or any text in French only NUMEROS DE SERIES
.	For Germany only or any text in German only SERIEN NUMMER
.	For Italy only or any text in Italian only MATR.O NUMERO
.	E NUMERO SERIE

3-AA02-004-A



MASSEY FERGUSON

MF 399 TRACTOR, A6.354.4 ENGINE - 819753

819753

ENGINE INSTALLATION - A6.354.4 ENGINE

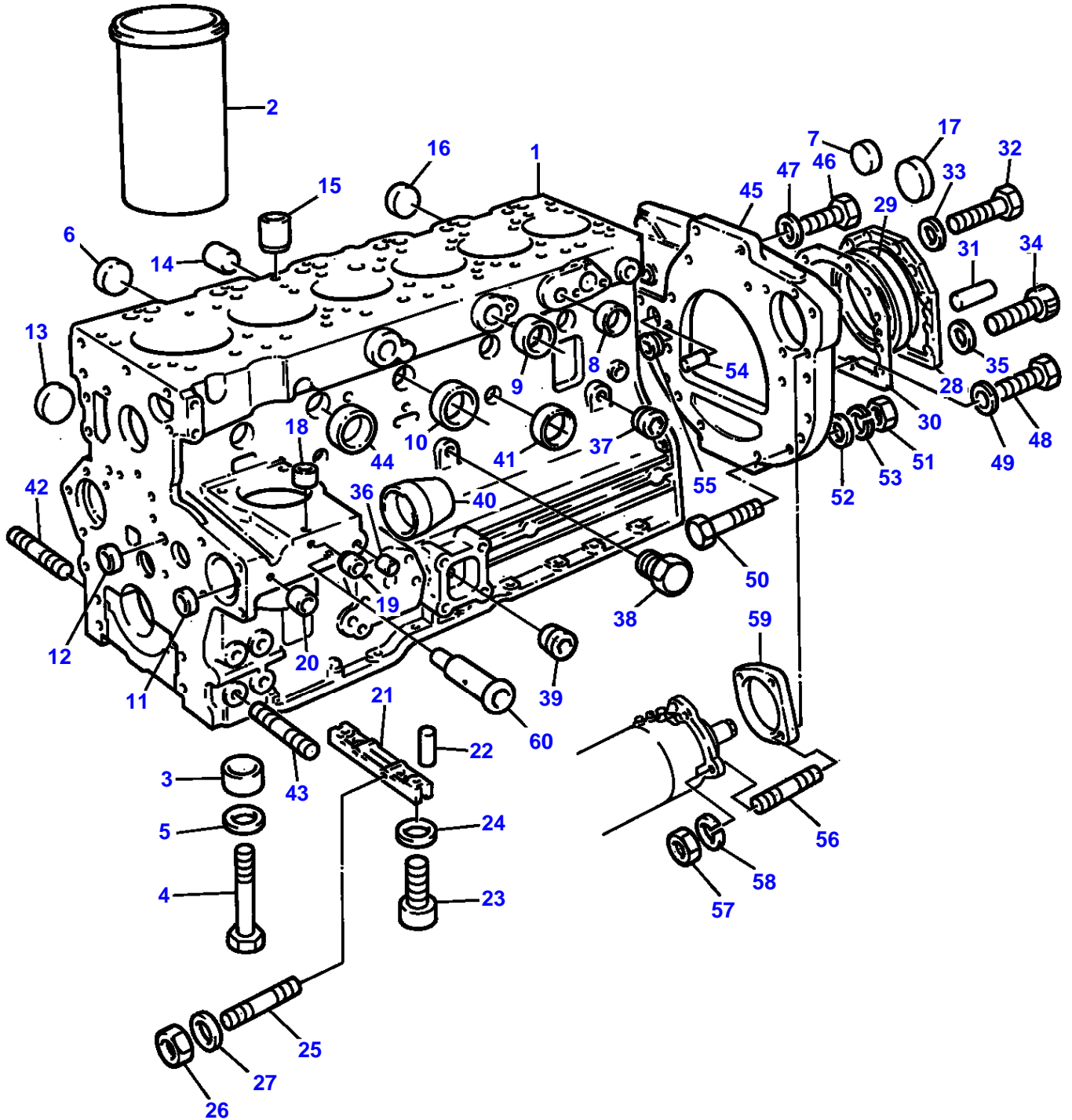
2

Item	Part Number	Qty	Description	Comments
				A6.354.4 ENGINE
1	1694432M91	1	Engine	PEL - TW31159
	3476398M91	1	Short Engine	PEL - TW39401
2	1447031M1	1	Oil Filter	
3	3595070M91	1	V Belt	(A)
4	828123M2	1	Bearing Assy	
10	3019858X1	1	Bolt Metric	
11	3019878X1	6	Bolt Metric	
12	825302M1	2	Dowel	
13	3019857X1	6	Bolt Metric	
14	3019860X1	1	Stud	
15	3019862X1	1	Nut Metric	
16	3019897X1	1	Stud	
17	3019862X1	1	Nut Metric	
23	736679M1	1	Extension	
24	3637938M1	1	Fan	
25	353525X1	4	Bolt Unf	
26	353446X1	4	Lock Washer	..

(A)

SERVICED IN MATCHED PAIRS

T-0560-13M-A



Item	Part Number	Qty	Description	Comments
				A6.354.4 ENGINE
1	ZZ 50041	1	Kit,Cyl.Block	Repairs and replaces ZZ50055
2	31358393	6	Liner	(1) (A)
2	31358394	X	Liner	(B)
	31358398	X	Liner	Repairs and replaces 31358403 Thickness (+) 0.010" Thickness (+) 0.25MM
3	33142111	14	Thimble	(1)
4	32166329	14	Bolt	(1)
5		14	Washer	(D)
6	32418117	5	Plug	(1)
7	32418117	2	Plug	(1)
8	0650692	1	Plug	(1)
9	0650710	4	Plug	(1)
10	32416116	5	Plug	(1)
11	32417115	1	Plug	
12	0650566	2	Plug	
13	0650710	1	Plug	
14	32417133	1	Plug	
15	32417134	1	Plug	
16	32418117	5	Plug	
17	32416105	1	Plug	
18	32417134	1	Plug	
19	32417134	1	Plug	
20	32417127	2	Plug	
21	3627P011	1	Bridge Piece	Repairs and replaces 36277825 Repairs and replaces 36277833 (C)
22	32811408	2	Joint	(C)
23	2172514	2	Screw	Repairs and replaces 2176369
24	0920521	2	Washer	(C)
25	0826201	2	Stud	
26	0576002	2	Nut	
27	0920053	2	Washer	
28	4142V064	1	Housing	Repairs and replaces 4142V061
29	2418F475	1	Seal	(29)
30	36817157	1	Joint	
31	0350009	2	Dowel	
32	0746211	10	Bolt	
33	0920003	10	Washer	
34	2172530	2	Capscrew	
35	33112111	2	Washer	
36	32417143	1	Plug	
37	0650594	1	Plug	Repairs and replaces 2431131
38	0650594	2	Plug	Repairs and replaces 32161357
39	0650594	1	Plug	
40	32813108	1	Cover	
41	2431A054	1	Plug	
42	0828411	4	Stud	
43	0828411	4	Stud	
44	32418117	1	Plug	
45	3714T043	1	Plate	
46	2234060	2	Bolt	
47	33115411	2	Washer	Repairs and replaces 33116113
48	0746424	6	Bolt	
49	33115129	6	Washer	
50	0096443	6	Bolt	
51	0576051	6	Nut	
52	0920004	6	Washer	
53	0920054	6	Washer	
54	32455119	2	Dowel	
55	0650588	1	Plug	
56	0827801	3	Stud	
57	0576051	3	Nut	
58	0920054	3	Washer	
59	37513254	1	Spacer	Repairs and replaces 37513253
60	33435133	1	Tube	

MASSEY FERGUSON

MF 399 TRACTOR, A6.354.4 ENGINE - 819753

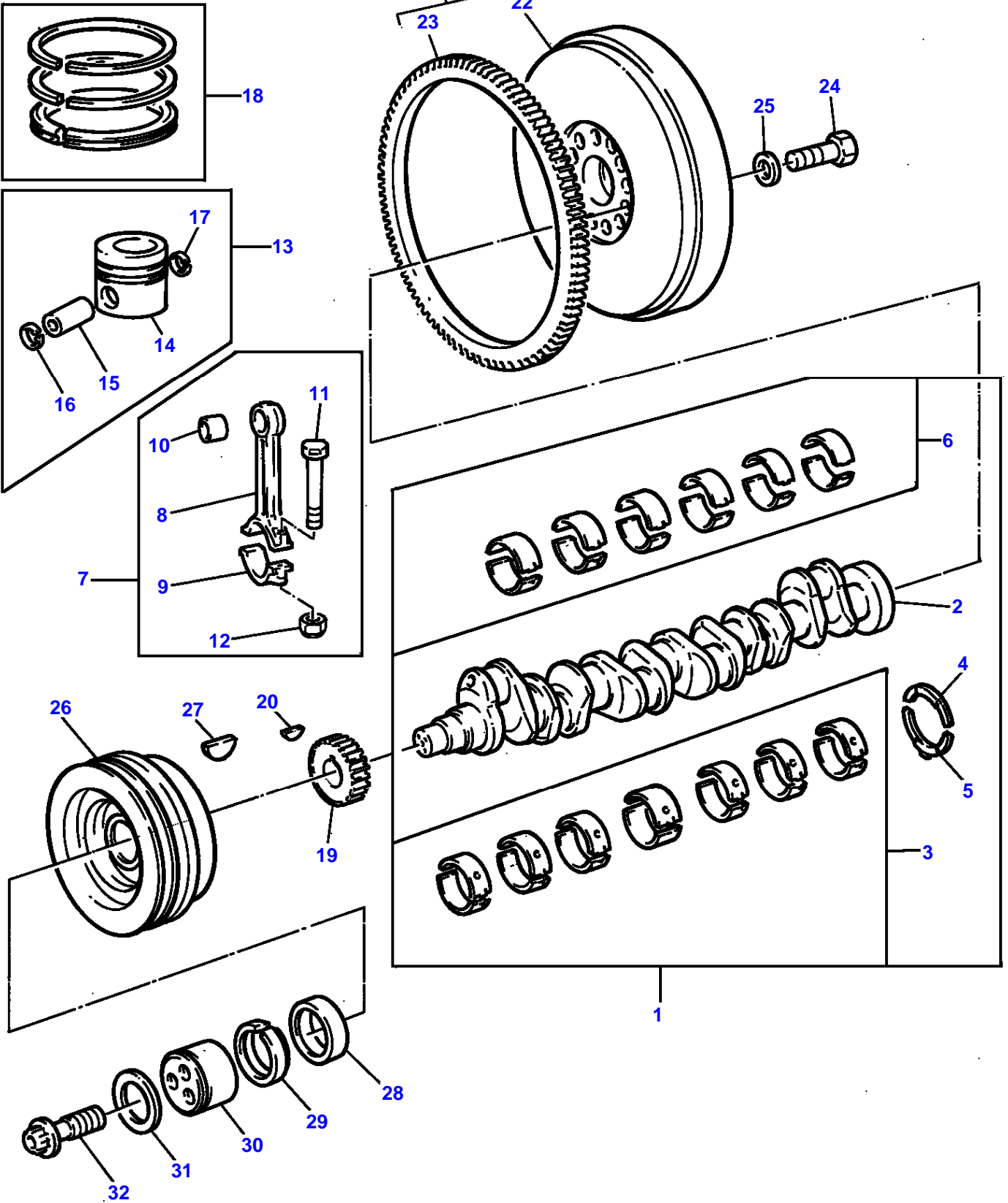
819753

CYLINDER BLOCK - A6.354.4 ENGINE

3

Item	Part Number	Qty	Description	Comments
				(A) PRESS FIT
				(B) SLIP FIT
				(C) USED ONLY WITH 36277831/36277833. NOT REQUIRED WITH 36277825/3627P011.
				(D) NO LONGER REQUIRED ON THIS APPLICATION

T-0563-12M-A



Item	Part Number	Qty	Description	Comments
				A6.354.4 ENGINE
1	ZZ 90113	1	Kit, Crankshaft	Repairs and replaces U5BG0037
2		1	Crankshaft	Repairs and replaces 68076 (1) Not serviced, order REF.1
3	68079	1	Kit, Bearing	(1) (A)
3	68079A	X	Kit, Bearing	(A) Thickness (-)0.25MM Thickness (-)0.010"
3	68079B	X	Kit, Bearing	(A) Thickness (-)0.50MM Thickness (-)0.020"
3	68079C	X	Kit, Bearing	(A) Thickness (-)0.75MM Thickness (-)0.030"
4	31137551	2	Thrust Washer	(1) Repairs and replaces 31137311
4	31137312	X	Thrust Washer	Thickness (+)0.19MM Thickness (+)0.0075"
5	31137561	2	Thrust Washer	(1) Repairs and replaces 31137321
5	31137322	X	Thrust Washer	Thickness (+)0.19MM Thickness (+)0.0075"
6	85043	1	Kit, Bearing	(1) (A)
6	85043A	X	Kit, Bearing	(A) Thickness (-)0.25MM Thickness (-)0.010"
6	85043B	X	Kit, Bearing	(A) Thickness (-)0.50MM Thickness (-)0.020"
6	85043C	X	Kit, Bearing	(A) Thickness (-)0.75MM Thickness (-)0.030"
7	ZZ 90009	6	Kit, Conrod	Repairs and replaces M7BJ0015
8		1	Conrod	(7) Not serviced, order REF.7
9		1	Cap	(7) Not serviced, order REF.7
10	31134123	1	Bush	(7)
11	32762144	2	Bolt	(7)
12	33221328	2	Nut	(7)
13	U5LU0016	6	Kit, Piston	(B) Up to Serial or Engine Number U737602M
13	U5LU0019	6	Kit, Piston	(B) From Serial or Engine Number U737603M
13	U5LP0019	6	Kit, Piston	(C) Up to Serial or Engine Number U737602M
13	U5LP0021	6	Kit, Piston	(C) Repairs and replaces U737603M
14		1	Piston	(13) Not serviced, order REF.13
15		1	Pin	(13) Not serviced, order REF.13
16	0170002	1	Circlip	(13)
17	0170002	1	Circlip	(13)
18	41158017	6	Kit, Piston Ring	
19	31171211	1	Gear,Crankshaft	(D,E) 28T
19	31171682	1	Gear,Crankshaft	(F,G) 28T
20	0500012	1	Woodruff Key	(E,G)
21	4111D048	1	Flywheel	
22		1	Flywheel	Not serviced, order REF.1
23	31161148	1	Ring	(1)
24	0096803	12	Bolt	
25	33117127	12	Washer	Repairs and replaces 33117121
26	2635674	1	Pulley,Crank	

Buy Now



Our support email:

ebooklibonline@outlook.com