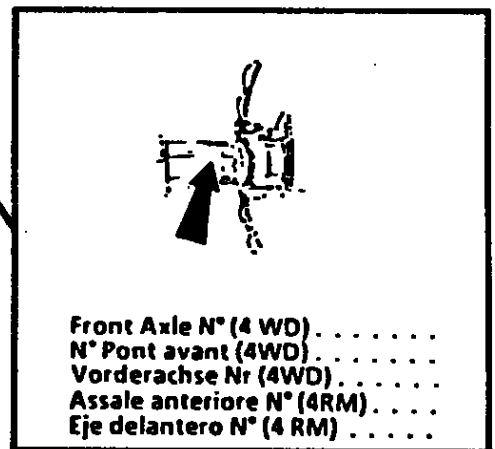
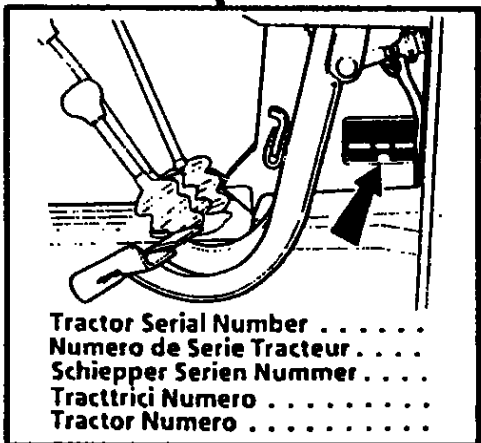
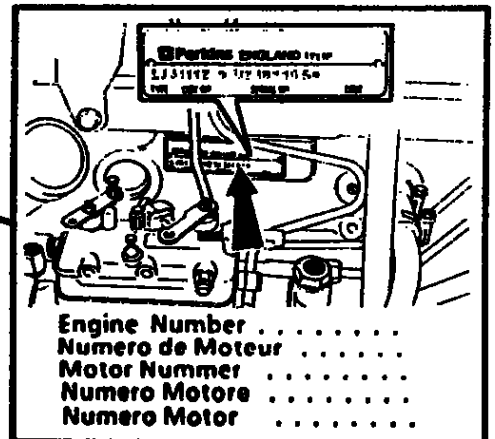
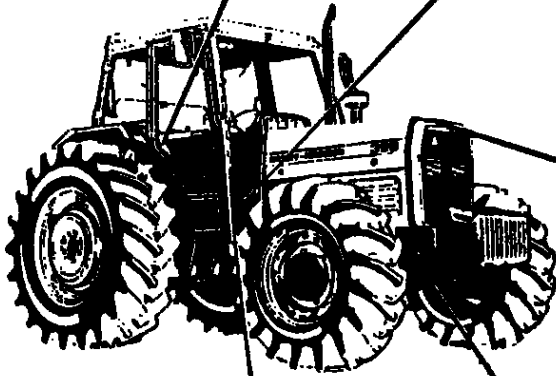
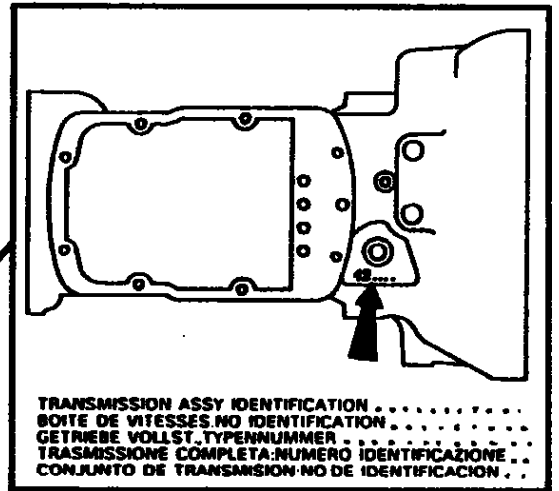
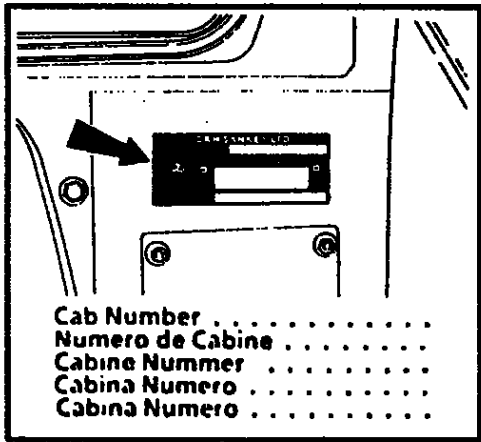


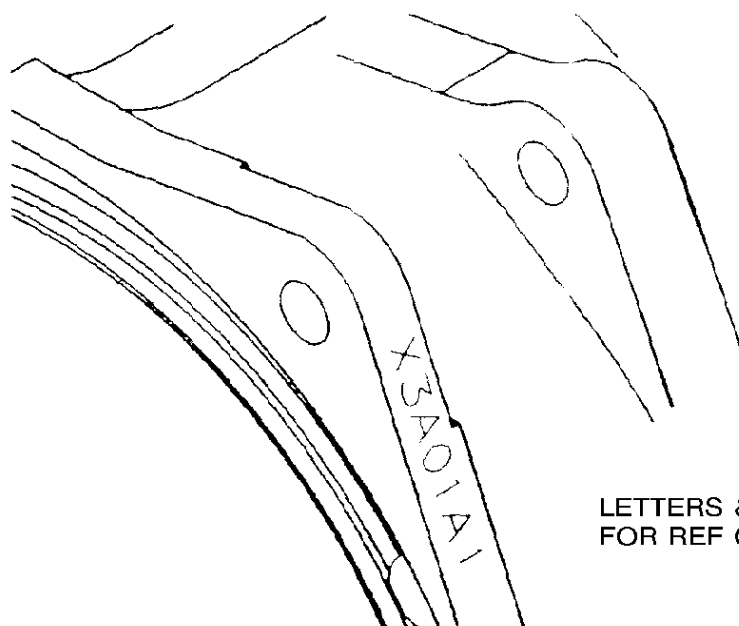
Page Title	Page Number
Section Divider	010-0005
Section Divider	010-0010
Engine Installation	010-0015
Cylinder Block - A4.248 Engine	010-0020
Crankshaft, Pistons And Connecting Rods - A4.248 Engine	010-0025
Cylinder Head - A4.248 Engine	010-0030
Rocker Shaft - A4.248 Engine	010-0035
Timing Gear And Camshaft - A4.248 Engine	010-0040
Balancer Unit - A4.248 Engine	010-0045
Fuel Injection Equipment (Diesel) - A4.248 Engine	010-0050
Lubricating Oil Sump - A4.248 Engine	010-0055
Lubricating Oil Filter And Integral Cooler - A4.248 Engine	010-0060
Water Pump, Thermostat And Heat Exchanger - A4.248 Engine	010-0065
Fuel Oil Lift Pump - A4.248 Engine	010-0070
Air Induction And Exhaust System - A4.248 Engine	010-0075
Alternator Positioner - A4.248 Engine	010-0080
Joints And Gaskets - A4.248 Engine	010-0085

3-0001-085-B



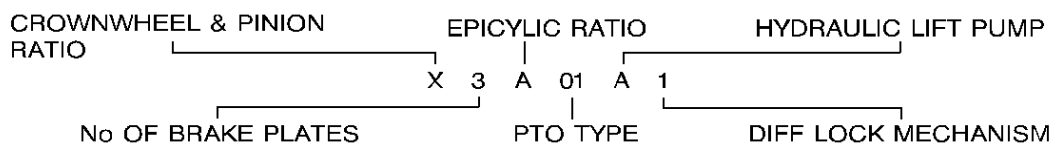
Description	Comments
.	SERIAL NUMBERS ..... For UK only or any text in English only
.	NUMEROS DE SERIES For France only or any text in French only
.	SERIEN NUMMER ..... For Germany only or any text in German only
.	MATR.O NUMERO ..... For Italy only or any text in Italian only
.	E NUMERO SERIE .....

3-0001-104-A



LETTERS & NUMBERS ARE FOR REF ONLY

THE IDENTIFICATION NUMBER AND LETTER TO BE IN THE FOLLOWING FORMAT



CROWNWHEEL & PINION RATIO

W = 3.454 : 1      11x38  
X = 4.375 : 1      8x35  
Y = 3.889 : 1      9x35  
Z = 6.167 : 1      6x37

No OF BRAKE PLATES

3 = THREE FRICTION PLATES  
4 = FOUR FRICTION PLATES  
5 = FIVE FRICTION PLATES  
6 = SIX FRICTION PLATES  
0 = NONE DIRECT DRIVE DRUM BRAKES

EPICYCLIC RATIO

A = NORMAL DUTY 3.75 : 1  
B = NORMAL DUTY 3.1428 : 1  
C = HEAVY DUTY 3.75 : 1  
D = HEAVY DUTY 3.1428 : 1  
E = HEAVY DUTY 4.8 : 1  
F = DIRECT DRIVE DISC BRAKE  
G = DIRECT DRIVE DRUM BRAKE

DIFF LOCK MECHANISM

1 = MECHANICAL  
2 = HYDRAULIC

PTO TYPE

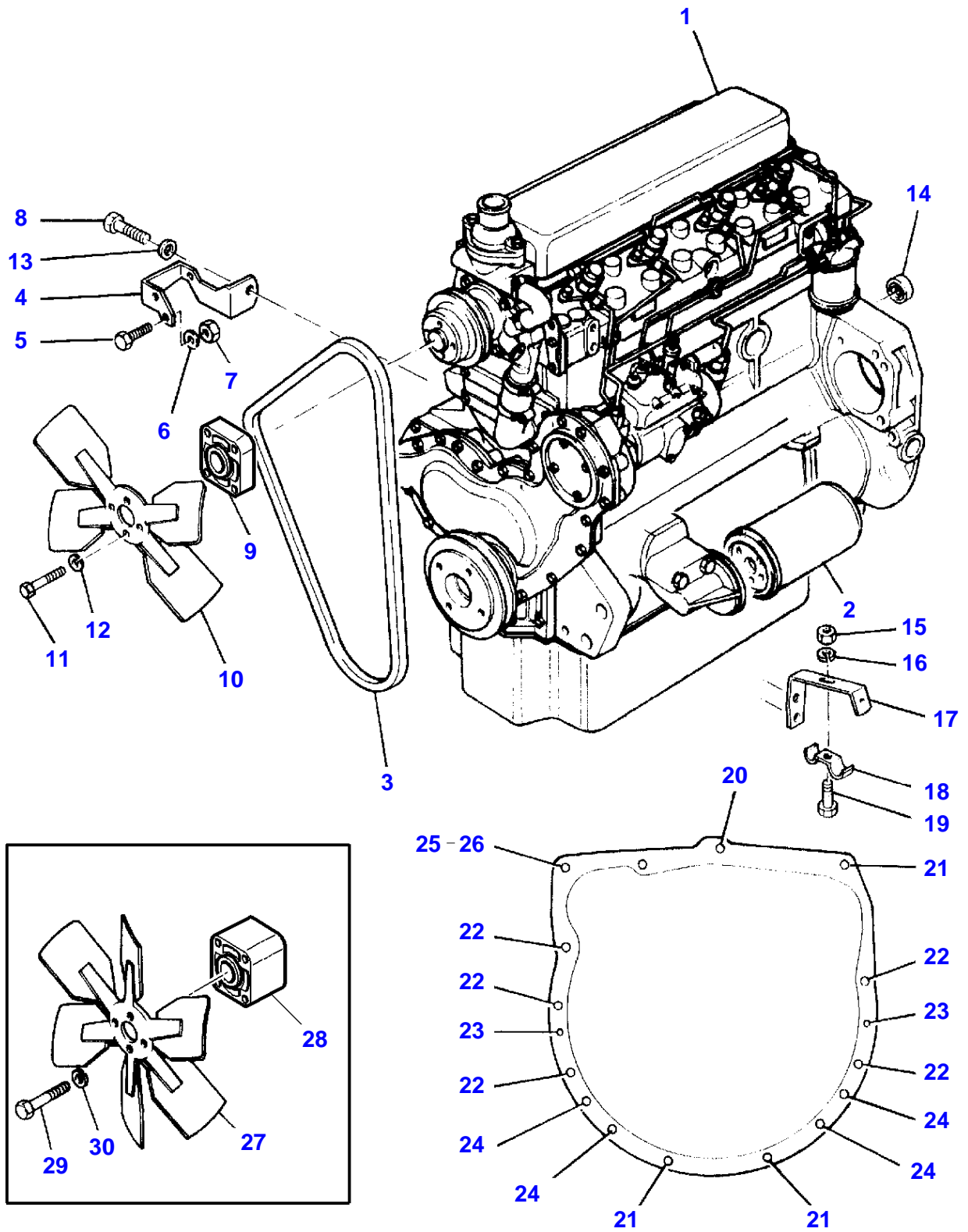
01 = LIVE SINGLE SPEED LOW FLOW PUMP  
02 = LIVE SINGLE SPEED HIGH FLOW PUMP  
03 = SINGLE SPEED IPTO  
04 = TWO SPEED SHIFTABLE 540/1000 REV MIN IPTO  
05 = TWO SPEED SHIFTABLE 540/1000 REV MIN IPTO WITH LOCKOUT  
06 = TWO SPEED SHIFTABLE ECONOMY 540/540 E

HYDRAULIC LIFT PUMP

A = STANDARD FLOW PUMP WITH BLACK MARKED RELIEF VALVE  
B = STANDARD FLOW PUMP WITH PLAIN NO MARK RELIEF VALVE  
C = STANDARD FLOW PUMP AUXILIARY PUMP (PLATED DRIVE) PLAIN RELIEF VALVE  
D = STANDARD FLOW PUMP AUXILIARY PUMP (PLATED DRIVE) BLACK RELIEF VALVE  
E = HIGH FLOW PUMP CENTRE SHIFT SHIFTABLE PTO  
F = HIGH FLOW PUMP SIDE SHIFT SHIFTABLE PTO  
G = DUMMY PUMP (FERMEC)

Description	Comments
.	REAR HOUSING For UK only or any text in English only
.	CARTER ARRIERE For France only or any text in French only
.	GEHAEUSE HINTEN For Germany only or any text in German only
.	CARCASSA POSTERIORE For Italy only or any text in Italian only
.	E ALOJAMIENTO TRASERO

3-AA02-033-B

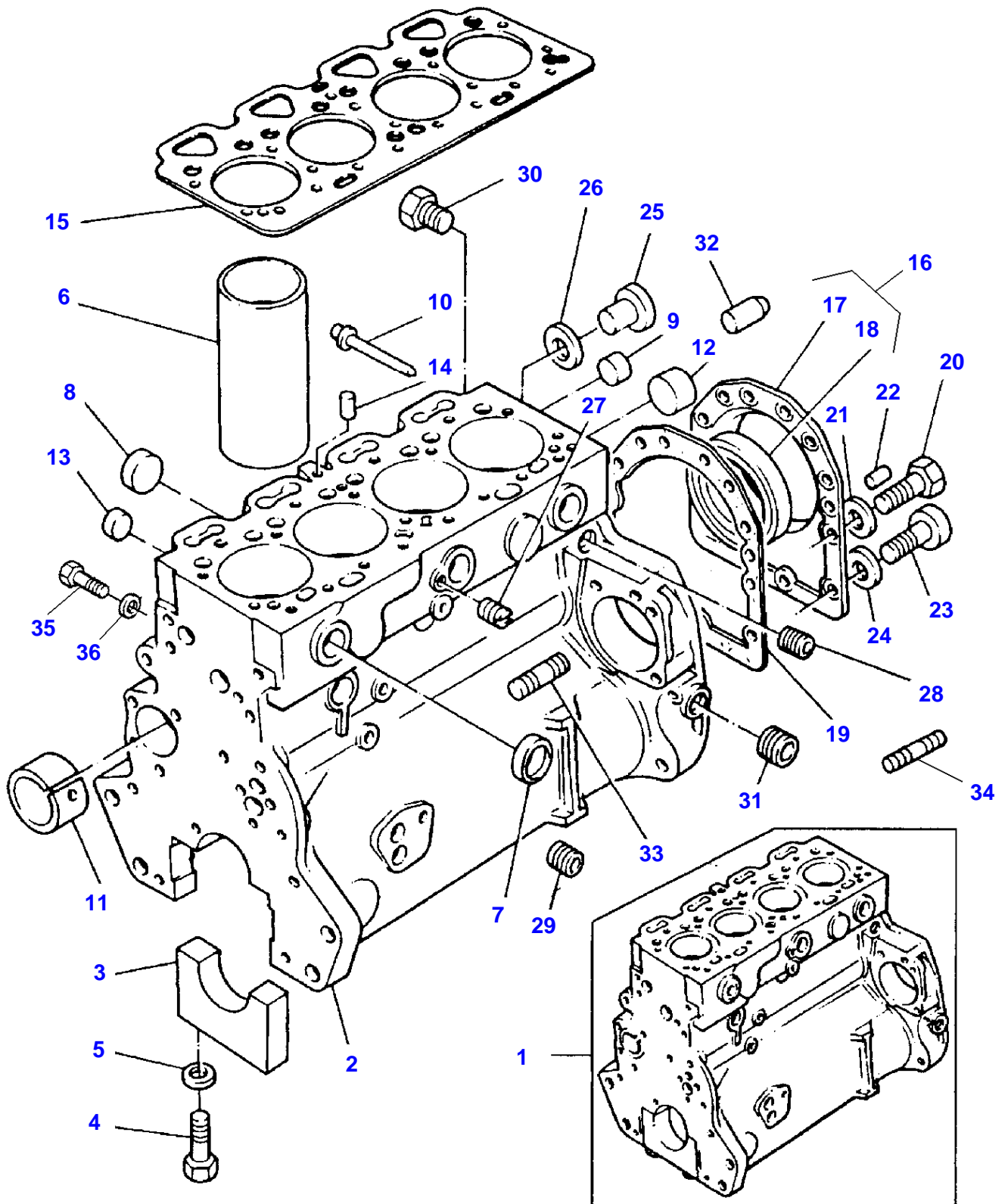


## Engine Installation

Item	Part Number	Qty	Description	Comments
1	1694430M91	1	Engine	PEL - LF31141
	3612675M91	1	Engine	[A] PEL LF31249
	3641215M91	1	Short Engine	Repairs and replaces PEL-39308 Repairs and replaces 3478328M91 PEL - LF39335 PEL - LF31235
	3596123M91	1	Engine	PEL LF 31235 PEL LF 31186
2	<b>1447048M1</b>	1	Oil Filter	
3	<b>1693745M1</b>	1	V Belt	
	<b>1687610M91</b>	1	Kit, Belt	[A]
4	1694276M4	1	Bracket	
5	376334X1	1	Screw Unc	
6	353755X1	1	Washer	
7	355565X1	1	Nut Unc	
8	353536X1	1	Screw Unf	
9	736519M2	1	Spacer	Thickness 17,7MM Repairs and replaces 3638564M1
10	1695933M1	1	Fan	4 BLADE
11	353521X1	4	Bolt Unf	
12	353446X1	4	Lock Washer	
13	353756X1	1	Washer	
14	828123M2	1	Bearing Assy	
15	339030X1	1	Nut Metric	
16	339375X1	1	Lock Washer	
17	3612888M1	1	Bracket	
18	1876383M1	1	Clamp	
19	3001753X1	1	Screw Metric	
20	3019858X1	1	Bolt Metric	M12 X 35/30 Up to Serial or Engine Number 30/11/96
	3807754M1	1	Bolt Metric	M12 X 45/30 From Serial or Engine Number 31/11/96
21	3019851X1	3	Bolt Metric	
22	3019853X1	5	Bolt Metric	
23	825302M1	2	Dowel	
24	3019855X1	4	Bolt Metric	
25	3019878X1	1	Bolt Metric	
26	3019862X1	1	Nut Metric	
27	3637938M1	1	Fan	[A]
28	3759095M1	1	Spacer	[A] Thickness 40,7MM
29	353446X1	4	Lock Washer	[A]
30	353527X1	4	Screw	[A]

FOOTNOTE [A] WITH AIR CONDITIONING

L-0560-17M-C





Item	Part Number	Qty	Description	Comments
1	3641083M91	1	Cylinder Block	Repairs and replaces 3637491M91
2		1	Cylinder Block	(1) Not serviced,order REF.1
3		5	Bearing Cap	(1) Not serviced,order REF.1
4	1476108X1	10	Screw	(1)
5	733072M1	10	Ring	(1)
6	3637333M1	4	Liner	[A] (1)
	3637334M1	X	Liner	[B] Repairs and replaces 3637034M1
7	731354M1	6	Plug	(1)
8	735944M1	4	Plug	(1) Up to Serial or Engine Number 04/03/94
	746259M1	4	Plug	From Serial or Engine Number 05/03/94
9	731354M1	2	Plug	(1)
10	1476282X1	1	Plug	(1) Up to Serial or Engine Number 04/03/94
	1476282X1	1	Plug	[H] (1)
11	4222017M1	1	Bush	(1) Repairs and replaces 3638093M1 Repairs and replaces 734883M1
12	4222043M1	1	Plug	(1) Replace and repair. Old not interchangeable with new 733705M1
13	4222012M1	4	Plug	(1)
14	736868M1	1	Plug	(1)
15	4222500M1	1	Head Gasket	Repairs and replaces 3637341M1 Up to Serial or Engine Number 04-03-95
	4222124M1	1	Gasket	From Serial or Engine Number 05-03-95 Replace and repair. Old not interchangeable with new 3638294M1
	<b>3638845M1</b>	1	Head Gasket	[G] Up to Serial or Engine Number U106654N
	4222500M1	1	Head Gasket	[G] From Serial or Engine Number U106655N
16	3640868M91	1	Housing	[C] Repairs and replaces 748163M91
17		1	Housing	(16) Not serviced,order REF.16
18	1447691M1	1	Seal	(16)
19	4223587M1	1	Joint	Up to Serial or Engine Number 04/03/94 Repairs and replaces 3638520M1 Repairs and replaces 740828M1
	4223587M1	1	Joint	From Serial or Engine Number 05/03/94
20	353519X1	10	Screw Unf	[D]
	353519X1	12	Screw Unf	[E]
	3641252M1	12	Capscrew	[H]
21	375703X1	10	Washer	[D]
	375703X1	12	Washer	[E]
22	731947M1	2	Dowel	
23	357987X1	2	Bolt	
	3641253M1	2	Capscrew	[H]
24	745015M1	2	Washer	
25	376180X1	1	Plug	(1)
26	3638664M1	1	Washer	(1) Up to Serial or Engine Number 04/03/94 From Serial or Engine Number 05/03/94
	3638664M1	1	Washer	From Serial or Engine Number 05/03/94
27	748040M1	1	Plug	
28	363819X1	2	Plug	
29	731996M1	1	Plug	Repairs and replaces 3638540M1
30	376670X1	3	Plug	
31	363819X1	1	Plug	Repairs and replaces 733067M1
32	745017M1	1	Pointer	
33	731862M1	3	Stud	
34	732404M1	1	Stud	[F,H]
35	1476320X1	1	Screw	[H]
36	353434X1	1	Lock Washer	[H]

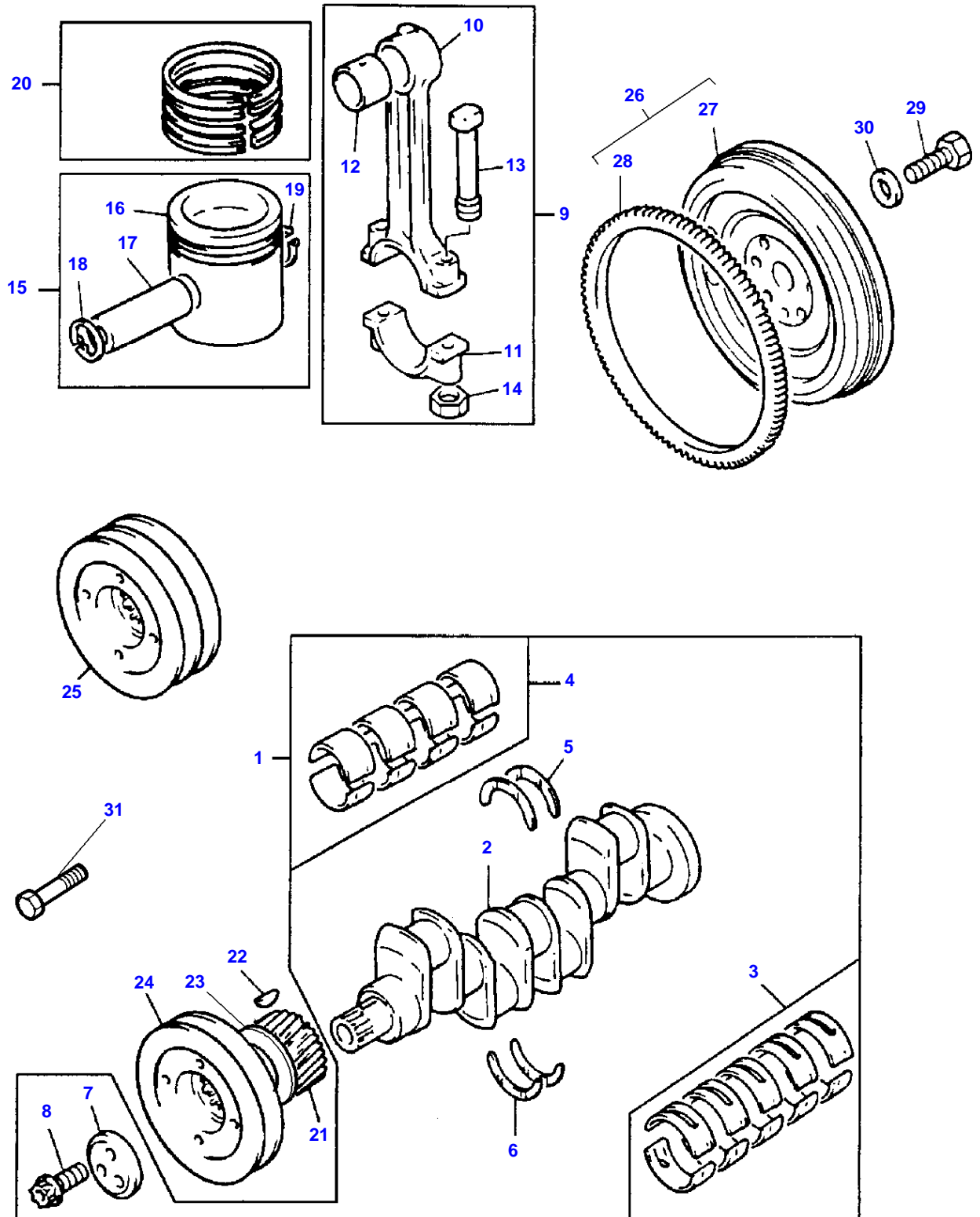
FOOTNOTE [A] PRESS FIT

FOOTNOTE [B] SLIP FIT

FOOTNOTE [C] WAS 3638347M91 USE 3640868M91 + 3641089M1 + 353519 X1 (2) + 375703X1 (2) + 3641090M1

Item	Part Number	Qty	Description	Comments
FOOTNOTE	[D]		USED ONLY WITH 748163M91/3638347M91	
FOOTNOTE	[E]		USED ONLY WITH 3640868M91	
FOOTNOTE	[F]		FOR ENGINES BUILT TO BUILD LIST LF31249	
FOOTNOTE	[G]		USED ONLY WITH LIST LF31186	
FOOTNOTE	[H]		FOR ENGINES BUILT TO BUILD LIST LF31235	

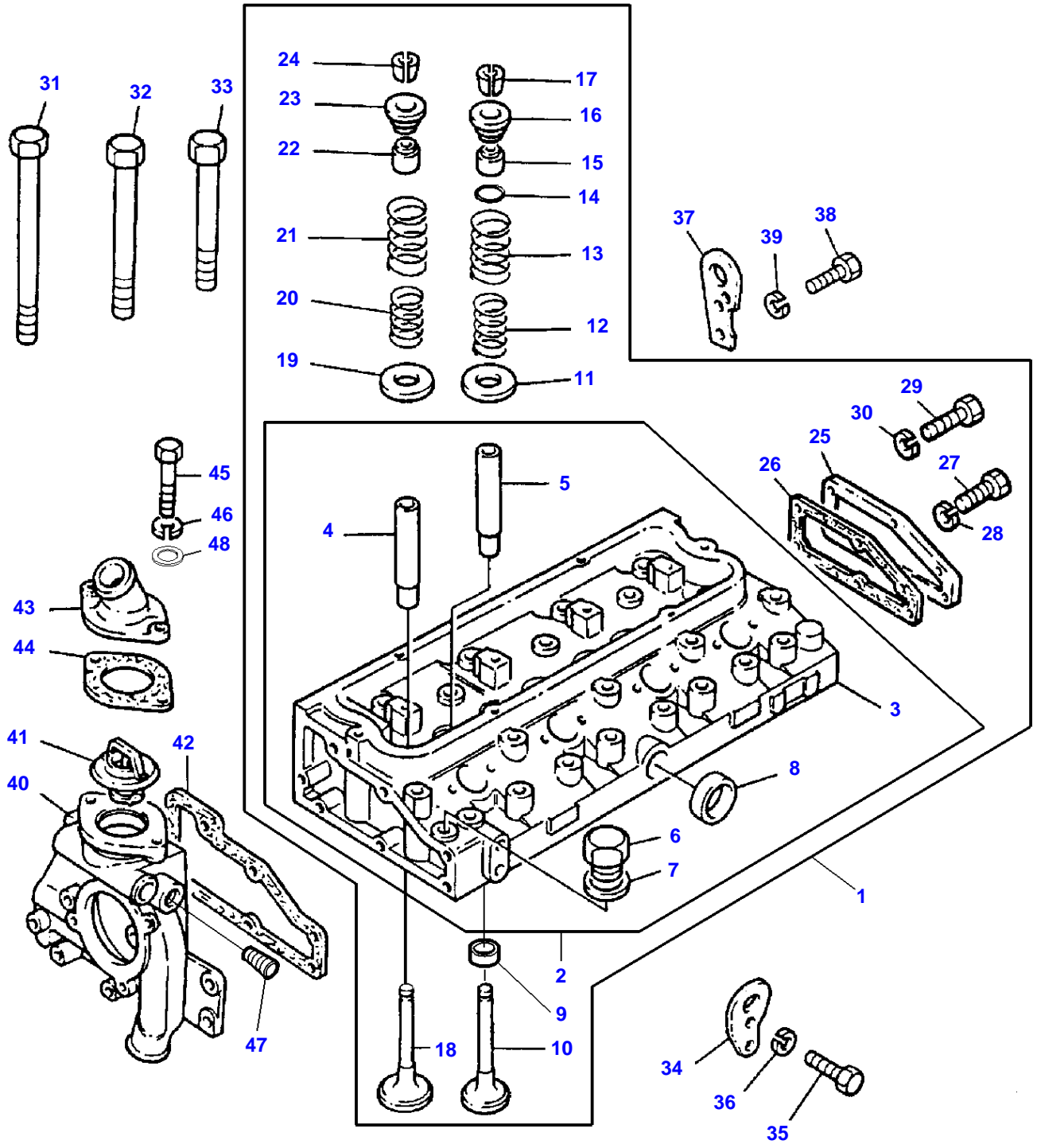
L-0563-15M-C



Item	Part Number	Qty	Description	Comments
1	3637402M91	1	Kit, Crankshaft	
2		1	Crankshaft	(1) Not serviced,order REF.1
3	735168M91	1	Kit, Bearing	[A] (1)
	735169M91	X	Kit, Bearing	[A] Thickness (-)0.25MM Thickness (-)0.010"
	735170M91	X	Kit, Bearing	[A] Thickness (-)0.50MM Thickness (-)0.020"
	735171M91	X	Kit, Bearing	[A] Thickness (-)0.75MM Thickness (-)0.030"
4	736950M91	1	Kit, Bearing	[A] (1)
	736951M91	X	Kit, Bearing	[A] Thickness (-)0.25MM Thickness (-)0.010"
	736952M91	X	Kit, Bearing	[A] Thickness (-)0.50MM Thickness (-)0.020"
	736953M91	X	Kit, Bearing	[A] Thickness (-)0.75MM Thickness (-)0.030"
5	747128M1	2	Thrust Washer	(1)
	735742M1	X	Washer	Thickness (+)0.19MM Thickness (+)0.0075"
6	747129M1	2	Thrust Washer	(1)
	735743M1	X	Washer	Thickness (+)0.19MM Thickness (+)0.0075"
7	3638115M1	1	Thrust Block	(1)
8	3638113M1	3	Screw	(1)
9	3637034M91	4	Kit, Conrod	
10		1	Conrod	(9) Not serviced,order REF.9
11		1	Cap	(9) Not serviced,order REF.9
12	733767M1	1	Bush	(9)
13	4222485M1	2	Screw	(9) Replace and repair. Old not interchangeable with new 3637029M1
14	3637030M1	2	Nut	(9)
15	747049M91	4	Kit, Piston	[B]
	<b>747050M91</b>	4	Kit, Piston	[C]
	<b>4223499M91</b>	4	Kit, Piston	[I,E] Replace and repair. Old not interchangeable with new 3641254M91
16		1	Piston	(15) Not serviced,order REF.15
17		1	Pin	(15) Not serviced,order REF.15
18	376131X1	1	Clip	(15)
19	376131X1	1	Clip	(15)
20	<b>747428M91</b>	4	Kit, Piston Ring	
21	734749M1	1	Gear	Number of teeth/spines 28 Up to Serial or Engine Number U171963P
	3638105M1	1	Gear	Number of teeth/spines 28 From Serial or Engine Number U171964P
22	2196X	1	Key	
23	742539M1	1	Washer	[F]
	4222509M1	1	Washer	[H]
24	3638098M1	1	Pulley	
25	747631M1	1	Pulley,Crank	[G,H]
26	742106M91	1	Flywheel	[D,H]
	747577M91	1	Flywheel	[E,J]
27		1	Flywheel	(26) Not serviced,order REF.26
28	731008M1	1	Annular Gear	(26) Number of teeth/spines 115
29	375763X1	6	Screw	
30	745365M1	6	Washer	Repairs and replaces 737514M1
31	747267M1	1	Screw	[H]

Item	Part Number	Qty	Description	Comments
FOOTNOTE	[A]		PRE-FINISHED	
FOOTNOTE	[B]		UNTOPPED	
FOOTNOTE	[C]		PRE-TOPPED	
FOOTNOTE	[D]		USED ONLY WITH LIST LF31141	
FOOTNOTE	[E]		USED ONLY WITH LIST LF31186	
FOOTNOTE	[F]		USED ONLY WITH PULLEY 3638098M1	
FOOTNOTE	[G]		PULLEY CRANKSHAFT 2 GROOVE AIR CONDITIONED	
FOOTNOTE	[H]		FOR ENGINES BUILT TO BUILD LIST LF31249	
FOOTNOTE	[I]		USE IN ENGINE SETS ONLY.	
FOOTNOTE	[J]		FOR ENGINES BUILT TO BUILD LIST LF31235	

L-0566-15M-B



**Buy Now**



Our support email:

[ebooklibonline@outlook.com](mailto:ebooklibonline@outlook.com)