

# Farmall 75N, Farmall 85N, Farmall 95N Tractors

## Operator's Manual

84142392 11/08  
1st Printing

**CASE III**  
AGRICULTURE

---

# TO THE OWNER

This manual contains information concerning the adjustment and maintenance of your Case IH Farmall Model 75N, 85N, and 95N Tractors. You have purchased a dependable machine, but only by proper care and operation can you expect to receive the performance and long service built into this tractor. Please have all operators read this manual carefully and keep it available for ready reference.

Your Case IH dealer will instruct you in the general operation of your tractor. (Refer to the "Delivery Report" at the back of this manual.) Your dealer's staff of factory-trained service technicians will be glad to answer any questions that may arise regarding the operation of your tractor.

Your Case IH dealer carries a complete line of genuine Case IH service parts. These parts are manufactured and carefully inspected to insure high quality and accurate fitting of any necessary replacement parts. Be prepared to give your dealer the model and product identification number of the tractor, when ordering parts. Locate these numbers now and record them below. Refer to the "General Information" section of this manual for the location of the model and product identification numbers of your tractor.

Model \_\_\_\_\_

Product Identification Number \_\_\_\_\_



---

 **WARNING** 

**This safety alert symbol indicates important safety messages in this manual. When you see this symbol, carefully read the message that follows and be alert to the possibility of personal injury or death.**

---

---

 **WARNING** 

**Pictures in this manual may show protective shielding open or removed to better illustrate a particular feature or adjustment.**

**Be certain, however, to close or replace all shielding before operating the machine.**

---

## IMPROVEMENTS

CNH America LLC is continually striving to improve its products. We reserve the right to make improvements or changes when it becomes practical and possible to do so, without incurring any obligation to make changes or additions to the equipment sold previously.

---

# CONTENTS

## Section 0

|   |     |
|---|-----|
| To The Owner .....                      | 0-1 |
| Improvements .....                      | 0-1 |
| California Proposition 65 Warning ..... | 0-5 |

## Section 1

|   |      |
|---|------|
| General Information and Safety .....        | 1-1  |
| Tractor Identification Plates .....         | 1-2  |
| Important Ecological Considerations .....   | 1-5  |
| Precautionary Statements .....              | 1-6  |
| Personal Safety .....                       | 1-6  |
| Machine Safety .....                        | 1-6  |
| Information .....                           | 1-6  |
| Working Safely .....                        | 1-8  |
| Safety Decals .....                         | 1-14 |
| Standardized Symbols .....                  | 1-19 |
| Tractor Noise Level Information Sheet ..... | 1-20 |

## Section 2

|  |      |
|--|------|
| General Information, Controls and Instruments .....  | 2-1  |
| Introduction .....   | 2-1  |
| Digital Instrument Control Panel .....   | 2-2  |
| Digital Indicators .....   | 2-3  |
| Indicator Light Panel Operation .....  | 2-4  |
| Controls .....   | 2-24 |
| Cab .....  | 2-28 |
| Air-conditioning/Ventilation .....   | 2-33 |
| Cab Air-conditioning/Heating Controls .....  | 2-34 |
| Seat .....   | 2-42 |
| Transmission with Range Gear and Mechanical Shuttle 30/40 Km/h (16F + 16R) .....           | 2-44 |
| Transmission with Range Gear and Electrohydraulic Shuttle 30/40 Km/h (16FWD + 16REV) ..... | 2-45 |
| 18.64 mph (30 Km/h) Transmission Version (16FWD + 16REV) .....                             | 2-46 |

---

### Section 3

|   |      |
|---|------|
| Field Operation .....                                 | 3-1  |
| Starting and Stopping .....                           | 3-2  |
| Brakes .....  | 3-6  |
| Electronically Controlled Electro-hydraulic MFD ..... | 3-8  |
| Differential Lock .....                               | 3-9  |
| Power Take-off .....                                  | 3-11 |
| Mechanically Controlled Hydraulic Lift .....          | 3-14 |
| Three-point Linkage .....                             | 3-18 |
| Implement Connection Points .....                     | 3-22 |
| Auxiliary Control Valves (Use and Maintenance) .....  | 3-23 |
| Rear Remote Valves .....                              | 3-26 |
| Wheel Track Adjustment .....                          | 3-29 |
| Mfd Front and Rear Wheel Track Adjustment .....       | 3-31 |
| Steering Angle Adjustment (MFD) .....                 | 3-32 |
| Front Axle Swing Adjustment .....                     | 3-32 |
| Tires .....   | 3-35 |
| Loading Information .....                             | 3-37 |
| Speed Code .....                                      | 3-37 |
| Inflation Pressures .....                             | 3-38 |
| Tire Sizes .....                                      | 3-39 |
| Tire Combinations .....                               | 3-40 |
| Metal Ballasting .....                                | 3-41 |
| Permitted Maximum Weights .....                       | 3-42 |
| MFD Models .....                                      | 3-44 |

### Section 4

|   |      |
|---|------|
| Lubrication and Maintenance .....                           | 4-1  |
| Tractor Refueling .....                                     | 4-3  |
| Access for Inspection and Maintenance .....                 | 4-6  |
| Lubrication and Maintenance Table .....                     | 4-7  |
| Flexible Maintenance .....                                  | 4-9  |
| When the Indicator Light Illuminates on the Dashboard ..... | 4-13 |
| Every 10 Hours of Work .....                                | 4-16 |
| Every 50 Hours of Work .....                                | 4-17 |
| Every 100 Hours of Work .....                               | 4-20 |
| Every 300 Hours of Work .....                               | 4-22 |
| Every 500 Hours of Work (Models 75N and 85N) .....          | 4-26 |
| Every 600 Hours of Work (Model 95N) .....                   | 4-29 |

---

|   |      |
|---|------|
| Every 1200 Hours or Every Year .....                        | 4-32 |
| Every 1200 Hours of Work or Every 2 Years .....             | 4-34 |
| Every 1800 Hours of Work .....                              | 4-38 |
| Electrical System .....                                     | 4-39 |
| Starting The Engine with a Flat Battery or No Battery ..... | 4-40 |
| Fuses and Relays .....                                      | 4-41 |
| Location of Fuses and Relays .....                          | 4-42 |
| Front Headlight Adjustment and Replacement .....            | 4-59 |
| Recommendations For Bodywork Maintenance .....              | 4-70 |
| Lubricants and Fluids .....                                 | 4-71 |
| <br>  |      |
| <b>Section 5</b>  |      |
| Troubleshooting, Causes and Solutions .....                 | 5-1  |
| <br>  |      |
| <b>Section 6</b>  |      |
| Prolonged Tractor Inactivity .....                          | 6-1  |
| <br>  |      |
| <b>Section 7</b>  |      |
| Accessories .....   | 7-1  |
| Towing Equipment .....                                      | 7-2  |
| Fold-down Roll Bar .....                                    | 7-3  |
| <br>  |      |
| <b>Section 8</b>  |      |
| Specifications and Data .....                               | 8-1  |
| Weights .....   | 8-5  |
| Engine Data .....   | 8-6  |
| <br>  |      |
| <b>Section 9</b>  |      |
| Inspections and/or Operations to be Carried Out .....       | 9-1  |
| <br>  |      |
| <b>Section 10</b>   |      |
| Index .....   | 10-1 |

---

(North America Only)  
(California Only)

**CALIFORNIA**

**Proposition 65 Warning**

**Diesel engine exhaust and some of its constituents are known to the State of California to cause cancer, birth defects, and other reproductive harm.**

**Battery posts, terminals and related accessories contain lead and lead compounds, chemicals known to the State of California to cause cancer and birth defects or other reproductive harm. Wash hands after handling.**

---

# SECTION 1

## GENERAL INFORMATION AND SAFETY

### GENERAL

This Use and Maintenance Manual provides a guide for the user with regard to running-in, use and maintenance of the tractor.

Read this manual carefully and keep in a convenient place for future reference. Do not hesitate to contact your local dealer for any queries concerning your tractor. The dealer can provide skilled personnel, trained by the manufacturer, original service parts and all tools and equipment necessary for your service requirements.

The tractor is designed as a power generator and drive-propulsion unit for use in normal and traditional agricultural conditions.

The tractor is also designed to provide maximum performance, economic running and easy use over a wide range of operations. Prior to delivery, all machines are carefully inspected (by both the Manufacturer and your local authorized dealer), to make sure that they reach the user in perfect condition. To maintain the tractor in this condition and ensure trouble-free operation, the routine maintenance described in Section 3 of this manual must be carried out at the specified intervals.

### CLEANING THE TRACTOR

Your tractor is an advanced machine, fitted with an electro-hydraulic control system. Care must be taken when cleaning the tractor, especially if a pressurized water cleaner is used.

- When using a pressure washer, never stand too close to the tractor or direct the water jet on electrical components, seals or intake openings, etc.
- Never direct jets of cold water at the hot engine or exhaust. See also Section 3 (Recommendations for bodywork maintenance).

### SAFETY PRECAUTIONS

Safety precautions for the operator and bystanders are shown on the following pages. Read the safety instructions and follow recommendations and hints **before** starting to use the tractor.

### SERVICE AFTER THE FIRST 50 HOURS OF WORK

The operations required for the first service are shown at the end of the Manual, immediately prior to the index.

After the first 50 hours of use, return to the dealer with your tractor and this Manual in order to carry out the Manufacturer's checks and to fill in the certificates included in Section 9. The first sheet must be compiled on completion of the service and held by the dealer. The second sheet must be kept in the Manual for documentation and reference purposes. **Check that both copies are signed by both yourself and the dealer.**

### SPARE PARTS

"Non-original" spare parts have not been tested or authorized by the Manufacturer. Installment and/or use of such products may adversely affect the tractor's design specifications, thereby compromising operational safety. The manufacturer cannot be held responsible for any damage resulting from the use of "non-original" spare parts.

No modifications may be made to the tractor without written authorization from the Manufacturer.

### WARRANTY

The tractor is guaranteed in accordance with current legislation in your country and in line with contractual agreements reached with the dealer at the time of sale. However, the warranty is no longer valid if the rules and instructions for the use and maintenance of the tractor, described in this Manual, are not observed.

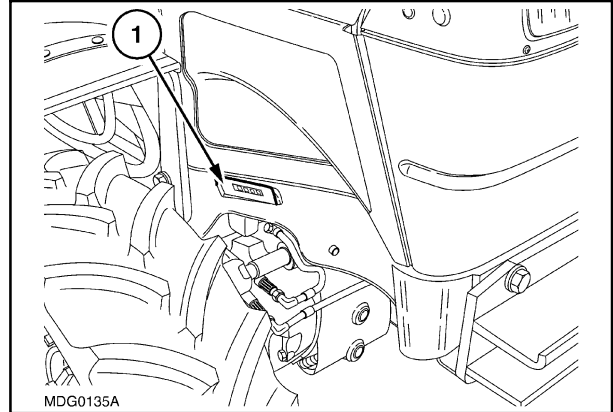
## TRACTOR IDENTIFICATION PLATES

Serial numbers identify the tractor and its main components. The identification data must be supplied by the dealer for requests for spare parts or service operations. Identification data is of fundamental importance in the event of theft of the tractor. The location of the various identification data is shown below.

### ENGINE IDENTIFICATION DATA PLATE

The tractor's frame number is stamped over the front support, 1. It gives the safety frame identification data.

Record below the corresponding serial number.

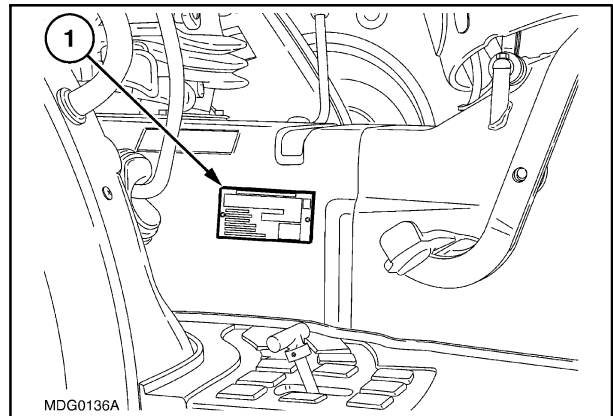


1

### FRAME AND ENGINE TYPE IDENTIFICATION SUMMARY DATA PLATE FOR MODELS WITH ROLL BAR

The plate, 1, groups the identification data with your machine's frame number and engine number.

Record below the corresponding serial number.

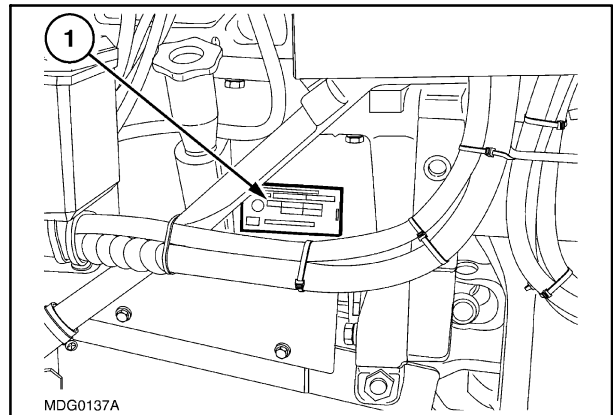


2

### FRAME AND ENGINE TYPE IDENTIFICATION SUMMARY DATA PLATE FOR MODELS WITH CAB

The plate, 1, groups the identification data with your machine's frame number and engine number.

Record below the corresponding serial number.



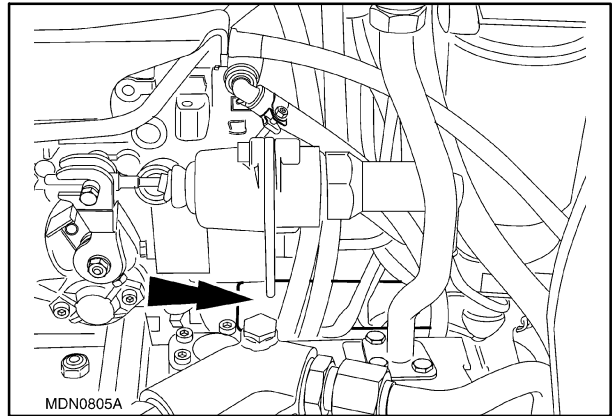
3



**ENGINE IDENTIFICATION DATA PLATE  
(MODELS 75N AND 85N)**

The serial number of the engine fitted on the tractor is stamped on the left-hand side of the engine body.

Record below the corresponding serial number.

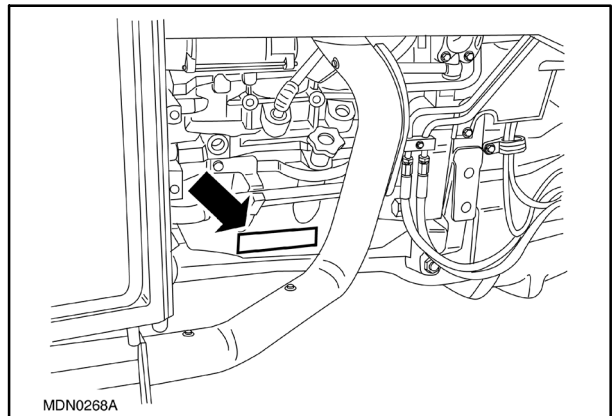


4

**ENGINE IDENTIFICATION DATA PLATE  
(MODEL 95N)**

The plate with the engine data installed on the tractor is fitted on the right-hand side of the engine.

Record below the corresponding serial number.

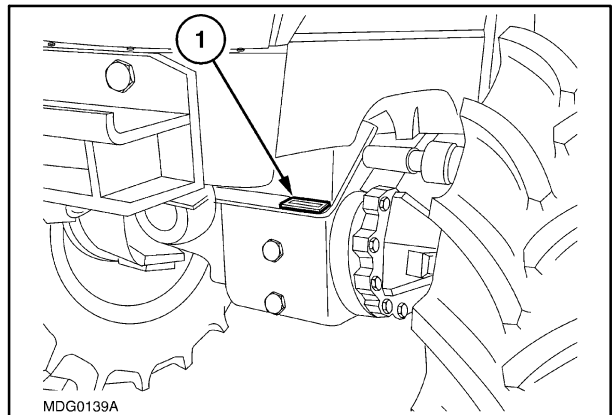


5

**MFD FRONT AXLE IDENTIFICATION PLATE**

The plate, 1, is located on the right-hand side and gives the identification data for the axle fitted on the machine.

Record below the corresponding serial number.

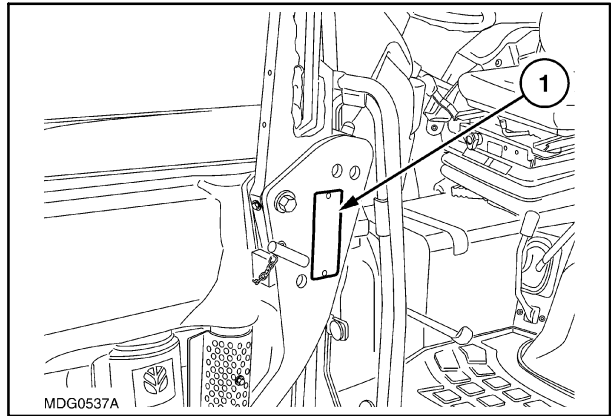


6

**ROLL BAR IDENTIFICATION PLATE**

The plate, 1, is located on the right-hand side and gives the identification data for the frame fitted on the machine.

Record below the corresponding serial number.

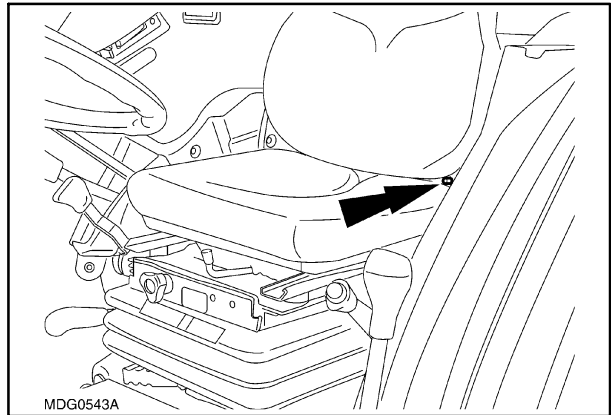


7

**CAB IDENTIFICATION PLATE**

The cab identification plate is located at the rear on the left-hand side as shown in the figure.

Record below the corresponding serial number.



8

## IMPORTANT ECOLOGICAL CONSIDERATIONS

Soil, air and water are essential elements for agriculture and for life on in general. If local legislation does not control the treatment of certain substances, the production of which is necessitated by advanced technologies, products derived from chemical and petrochemical products must be used and disposed of according to the rules of common sense.

The following recommendations may be of help:

- Find out what the relevant legislation in your country stipulates.
- Ask your suppliers of lubricants, oils, fuels, anti-freeze, detergents, etc. for information on the effects of these products on humans and the environment and for instructions concerning their use, storage and disposal. In many cases, local agricultural consultants will be able to provide assistance.

### SUGGESTIONS

1. Avoid using unsuitable, pressurized filling systems or fuel cans when filling tanks, as these may cause considerable spillage and leakage of liquids.
2. As a general rule, do not allow liquid fuels, lubricants, acids, solvents, etc., to come into contact with the skin. The majority of these products contain substances that are potential health hazards.
3. Modern lubricants contain additives. Do not burn contaminated fuel oils and/or oils used in conventional heating systems.
4. Avoid spillage when transferring used engine cooling liquids, engine and transmission lubricants, hydraulic oils, brake fluids, etc. Never mix used brake oil with fuel oil, or fuel oil with lubricants. Store safely until suitable disposal can be arranged according to national legislation or local regulations.
5. Modern anti-freeze liquids and solutions, e.g. anti-freeze and other additives, must be replaced every two years. They must not be left to be absorbed into the ground, but must be collected and disposed of in a suitable manner.
6. Do not open the air conditioning systems to carry out work. These systems contain gas which must not be released into the atmosphere. Contact your dealer or specialized personnel, who are equipped with the appropriate equipment and are authorized to refill the system.
7. Any leakage or defect in the engine cooling or hydraulic systems must be repaired immediately.
8. Do not increase the pressure in pressurized systems, as this may cause component parts to burst.
9. When welding, make sure that hoses are properly protected as sparks or molten material may puncture or weaken the tubes and sleeves, resulting in leakage of oil, cooling liquid, etc.
10. Do not adjust the setting of the fuel delivery system as this will alter the emission of exhaust fumes.

**NOTE:** *The engines installed on the tractors comply with anti-pollution legislation.*

# PRECAUTIONARY STATEMENTS

## PERSONAL SAFETY

Throughout this manual and on machine decals, you will find precautionary statements (“**DANGER**”, “**WARNING**”, and “**CAUTION**”) followed by specific instructions. These precautions are intended for the personal safety of you and those working with you. Please take the time to read them.

---

 **DANGER** 

---

This word “**DANGER**” indicates an immediate hazardous situation that, if not avoided, will result in death or serious injury. The color associated with Danger is RED.

---

---

 **WARNING** 

---

This word “**WARNING**” indicates a potentially hazardous situation that, if not avoided, could result in death or serious injury. The color associated with Warning is ORANGE.

---

---

 **CAUTION** 

---

This word “**CAUTION**” indicates a potentially hazardous situation that, if not avoided, may result in minor or moderate injury. It may also be used to alert against unsafe practices. The color associated with Caution is YELLOW.

---

**FAILURE TO FOLLOW THE “DANGER”, “WARNING”, AND “CAUTION” INSTRUCTIONS MAY RESULT IN DEATH OR SERIOUS BODILY INJURY.**

## MACHINE SAFETY

The precautionary statement (“**IMPORTANT**”) is followed by specific instructions. This statement is intended for machine safety.

**IMPORTANT:** *The word “IMPORTANT” is used to inform the reader of something he needs to know to prevent minor machine damage if a certain procedure is not followed.*

## INFORMATION

**NOTE:** *Instructions used to identify and present supplementary information.*

## IMPORTANT NOTES

The machine is designed and produced exclusively for agricultural use.

All other use will be considered to be contrary to the use specified by CNH AMERICA LLC, who cannot be held liable for damage to property or the machine, or for personal injuries which may result.

Persons who risk improper use will therefore assume the responsibility for any consequences arising from such use.

Compliance with the instructions for use, maintenance and repairs described in this manual, are the essential preconditions for the use specified by CNH AMERICA LLC.

The machine must only be used, serviced or repaired by personnel trained in the relevant working methods and safety regulations and who have been authorized to work on the machine.

The user must also observe the rules concerning general safety and accident prevention, including the Highway Code when driving on public highways.

Any arbitrary modifications made to this machine will release CNH AMERICA LLC from any liability resulting from damage or injury.

CNH AMERICA LLC and all its distribution organizations, inclusive of, but not restricted to, national, regional or local distributors, cannot be held liable for damage resulting from the malfunction of parts and/or components not approved by CNH AMERICA LLC.

Under no circumstances will a guarantee be issued for products made or sold by CNH AMERICA LLC that are damaged as a result of the malfunction of parts and/or components not approved by CNH AMERICA LLC.

## OPERATOR PROTECTIVE STRUCTURE



### WARNING



Your machine is equipped with an operator Protective Structure, such as: a Rollover Protective Structure (ROPS) or Falling Object Protective Structure (FOPS) or Cab with ROPS. A ROPS may be a cab frame or a two-posted or four-posted structure used for the protection of the operator to minimize the possibility of serious injury. The mounting structure and fasteners forming the mounting connection with the machine are part of the ROPS.

The Protective Structure is a special safety component of your machine.

**DO NOT** attach any device to the Protective Structure for pulling purposes. **DO NOT** drill holes to the Protective Structure.

The Protective Structure and interconnecting components are a certified system. Any damage, fire, corrosion or modification will weaken the structure and reduce your protection. If this occurs, the Protective Structure **MUST** be replaced so that it will provide the same protection as a new Protective Structure. Contact your dealer for Protective Structure inspection and replacement.

After an accident, fire, tip or roll over, the following **MUST** be performed by a qualified technician before returning the machine to field or job site operation:

- The Protective Structure **MUST** be replaced.
- The mounting or suspension for the Protective Structure, operator seat and suspension, seat belts and mounting components and wiring within the operator's protective system **MUST** be carefully inspected for damage.
- All damaged parts **MUST** be replaced.

**DO NOT WELD, DRILL HOLES, ATTEMPT TO STRAIGHTEN OR REPAIR THE PROTECTIVE STRUCTURE. MODIFICATION IN ANY WAY CAN REDUCE THE STRUCTURAL INTEGRITY OF THE STRUCTURE WHICH COULD CAUSE DEATH OR SERIOUS INJURY IN THE EVENT OF FIRE, TIP, ROLLOVER, COLLISION OR ACCIDENT.**

---

**Buy Now**



Our support email:

[ebooklibonline@outlook.com](mailto:ebooklibonline@outlook.com)