

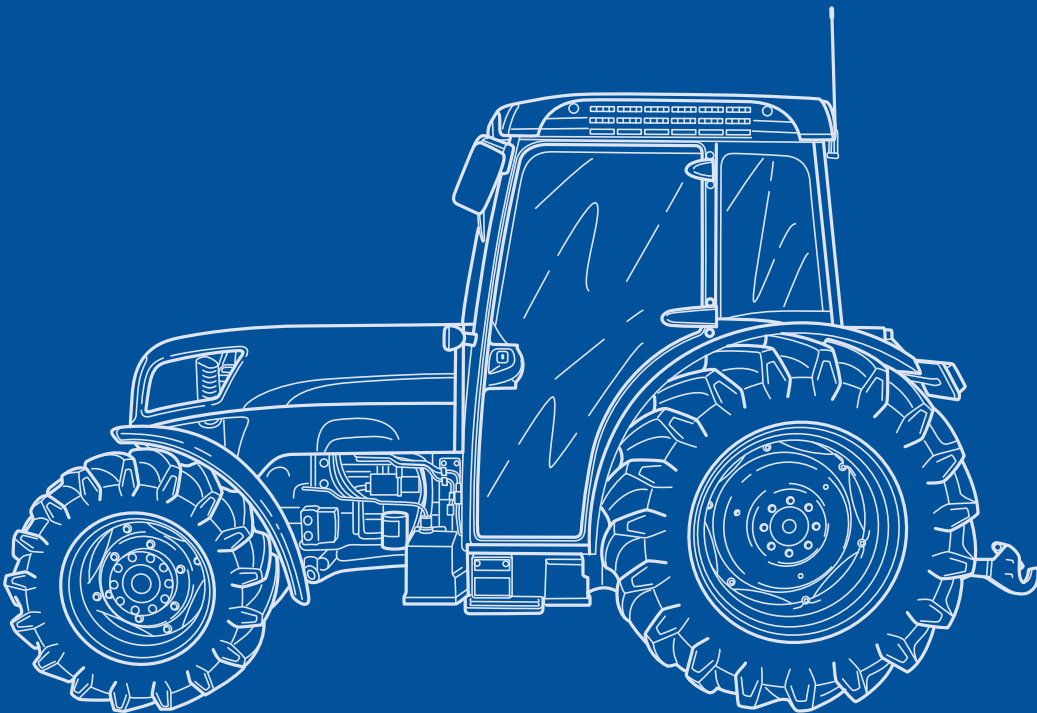
# OPERATOR'S MANUAL

---

**T4030F**

**T4040F**

**T4050F**



**Print No. 84162782**

2nd edition

English 01/09

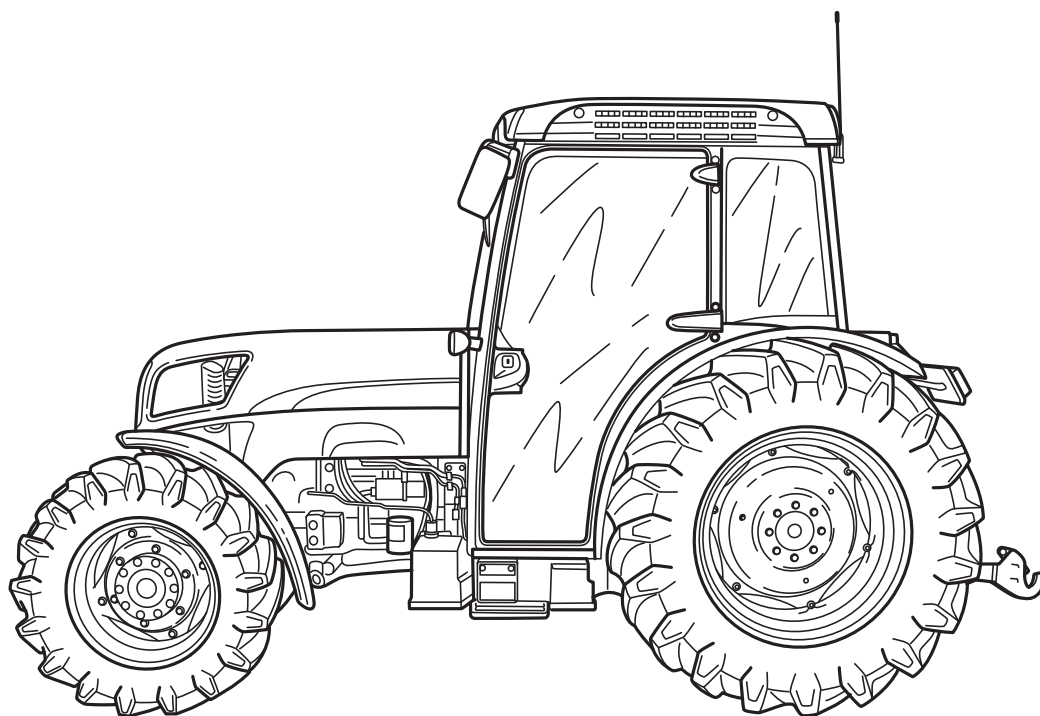
# OPERATOR'S MANUAL

---

**T4030F**

**T4040F**

**T4050F**



**Print No. 84162782**

2nd edition

English 01/09



# SECTION SUMMARY

- 1 - Introduction and safety measures**
- 2 - Controls, Instruments and Operation**
- 3 - Field Operation**
- 4 - Lubrication and Maintenance**
- 5 - Troubleshooting**
- 6 - Vehicle storage**
- 7 - Accessories**
- 8 - Specifications and Data**
- 9 - First 50 hour Service**
- 10 - Alphabetical Index**



COLOURS	
COLOUR	ABBR
BLACK	M-1724-P
DARK GREY	RAL-7024
GREY	RAL-7015
WHITE	TA/21
NEW HOLLAND BLUE	86593620

## Electromagnetic Interference (EMC)

This tractor complies strictly with the European Regulations on electro-magnetic emissions.

However, interference may arise following the installation of any additional equipment, as this may not necessarily meet the required standards.

As such interference can result in serious malfunction of the unit and/or create unsafe situations, you must observe the following:

- Ensure that each item of non-New Holland equipment fitted to the tractor bears the mark.



- The maximum power of any equipment that produces electromagnetic emissions (radio, telephones, etc.) must not exceed the limits imposed by the national authorities of the country where the tractor is used.
- The electromagnetic field generated by such equipment should not exceed 24 V/m at any time at any point in the proximity of electronic components.

Failure to comply with these rules will render the New Holland warranty null and void.

---

# CONTENTS

Section - Page

## Section 1

General information and safety measures .....	1-1
Tractor identification plates .....	1-2
Important ecological considerations .....	1-5
Always work safely .....	1-6
Working safely .....	1-7
Safety decals .....	1-13
Standard symbols .....	1-31
Tractor noise level information sheet .....	1-32

## Section 2

Analog control panel .....	2-2
Digital instrument control panel .....	2-7
Digital instrument indicator lights .....	2-9
Multifunction display .....	2-13
Lights/horn switch .....	2-32
Layout of controls .....	2-29
Electrohydraulic differential lock .....	2-35
Seat .....	2-38
Steering wheel adjustment .....	2-39
Cab .....	2-40
Gearbox and transmissions .....	2-56
Mechanical transmission (16fwd+16rev) 18.64/24.85 mph (30/40 km/h) .....	2-57
Transmission with electrohydraulic shuttle (16fwd+16rev) 18.64/24.85 mph (30/40 km/h) .....	2-59
Mechanical transmission (28fwd+16rev) 18.64/24.85 mph (30/40 km/h) .....	2-61
Mechanical transmission and splitter 18.64/24.85 mph (30/40 km/h) (32fwd+16rev) .....	2-63
Electrohydraulic transmission 18.64/24.85 mph (30/40 km/h) (32fwd+16rev) .....	2-65
Electrohydraulically controlled clutch and transmission 18.64/24.85 mph (30/40 km/h) (32fwd+16rev) ..	2-67
Electrohydraulic transmission 18.64/24.85 mph (30/40 km/h) (44fwd+16rev) .....	2-70
Fast mechanical transmissions 24.85 mph (40 km/h) .....	2-73

---

## Section 3

Field operation .....	3-1
Starting and stopping .....	3-2
Brakes .....	3-6
Transmission clutch pedal .....	3-7
Electronically controlled electro-hydraulic four-wheel drive .....	3-8
Differential lock .....	3-9
Electrohydraulic differential lock .....	3-10
Power take-off .....	3-12
Independent power take-off .....	3-13
Power take-off synchronised .....	3-14
Hydraulic lift with mechanical control .....	3-17
Electronically controlled rear hydraulic lift .....	3-21
Implement linkage .....	3-28
Rear auxiliary remote control valves .....	3-35
Wheel track adjustment .....	3-41
Steering angle adjustment .....	3-44
Tyres .....	3-47
Tyre combinations .....	3-52
Tyre selection for four-wheel drive models .....	3-54
Ballast .....	3-58
Permitted maximum weights .....	3-59

## Section 4

Lubrication and maintenance .....	4-1
Running in period .....	4-2
Tractor refuelling .....	4-4
Access for inspection and maintenance .....	4-7
Lubrication and maintenance table .....	4-8
Flexible maintenance .....	4-10
Instrument panel warning lights .....	4-14
Every 10 hours of work .....	4-17
Every 50 hours of work .....	4-18
Every 100 hours of work .....	4-22

---

Every 300 hours of work .....	4-24
Every 500 hours of work .....	4-28
Every 600 hours of work .....	4-31
Every 1200 hours or every year .....	4-34
Every 1200 hours of work or every 2 years .....	4-36
Every 1800 hours of work .....	4-41
Electrical system .....	4-42
Calibrations .....	4-60
Recommendations for bodywork maintenance .....	4-66
Tractor refuelling .....	4-67

## **Section 5**

Troubleshooting, causes and solutions .....	5-1
---	-----

## **Section 6**

Storing the tractor .....	6-1
---------------------------	-----

## **Section 7**

Front power take-off .....	7-2
Electronically controlled front hydraulic lift .....	7-4
Front three-point linkage .....	7-7
Quick fit implement linkage .....	7-10
Towing equipment .....	7-12
Side remote control valves .....	7-15
Control valve for trailer hydraulic brakes (not available on all markets) .....	7-17
Roll bar .....	7-19

## **Section 8**

Specifications and Data .....	8-1
-------------------------------	-----

## **Section 9**

Inspections and/or operations to be carried out .....	9-1
---	-----

## **Section 10**

Alphabetical index .....	10-1
--------------------------	------

## SECTION 1

### GENERAL INFORMATION AND SAFETY MEASURES

#### GENERAL GUIDELINES

This Use and Maintenance Manual provides a guide for the user with regard to running-in, use and maintenance of the tractor.

Read this manual carefully and keep in a convenient place for future reference. Do not hesitate to contact your local dealer for any queries concerning your tractor. The dealer can provide skilled personnel, trained by the manufacturer, original service parts and all tools and equipment necessary for your service requirements.

The tractor is designed as a power generator and drive-propulsion unit for use in normal and traditional agricultural conditions.

The tractor is also designed to provide maximum performance, economic running and easy use over a wide range of operations. Prior to delivery, all machines are carefully inspected (by both the Manufacturer and your local authorised dealer), to make sure that they reach the user in perfect condition. To maintain the tractor in this condition and ensure trouble-free operation, the routine maintenance described in Section 3 of this manual must be carried out at the specified intervals.

#### CLEANING THE TRACTOR

Your tractor is an advanced machine, fitted with an electrohydraulic control system. Care must be taken when cleaning the tractor, especially if a pressurized water cleaner is used.

- Never stand too close to the tractor or direct the water jet on electrical components, seals or intake openings, etc..
- Never direct jets of cold water at the hot engine or exhaust. See also Section 3 (Recommendations for bodywork maintenance).

#### SAFETY PRECAUTIONS

Safety precautions for the operator and bystanders are shown on page vii to xiii inclusive. Read the safety instructions and follow recommendations and hints **before** starting to use the tractor.

#### FIRST 50 HOUR SERVICE

The operations required for the first service are shown at the end of the Manual, immediately prior to the index.

After the first 50 hours of use, return to the dealer with your tractor and this Manual in order to carry out the Manufacturer's checks and to fill in the certificates included (on pages 9-1 and 9-3). The first sheet (page 9-1) must be compiled on completion of the service and held by the dealer. The second sheet (page 9-3) must be kept in the Manual for documentation and reference purposes. **Check that both copies are signed by both yourself and the dealer.**

#### SPARE PARTS

"Non-original" spare parts have not been tested or authorised by the Manufacturer. Installment and/or use of such products may adversely affect the tractor's design specifications, thereby compromising operational safety. The manufacturer cannot be held responsible for any damage resulting from the use of "non-original" spare parts. No modifications may be made to the tractor without written authorisation from the Manufacturer.

#### WARRANTY

The tractor is guaranteed in accordance with current legislation in your country and in line with contractual agreements reached with the dealer at the time of sale. However, the warranty is no longer valid if the rules and instructions for the use and maintenance of the tractor, described in this Manual, are not observed.



## TRACTOR IDENTIFICATION PLATES

Serial numbers identify the tractor and its main components. The identification data must be supplied by the dealer for requests for spare parts or service operations. Identification data is of fundamental importance in the event of theft of the tractor. The location of the various identification data is shown below.

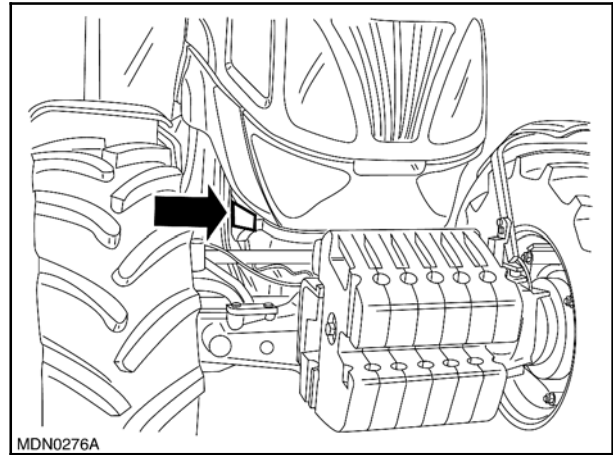
### TRACTOR CHASSIS FRAME IDENTIFICATION DATA PLATE - Fig. 1

The tractor chassis number is stamped above the front support on the right-hand side.

Indicate below the corresponding serial number.

N°

---



1

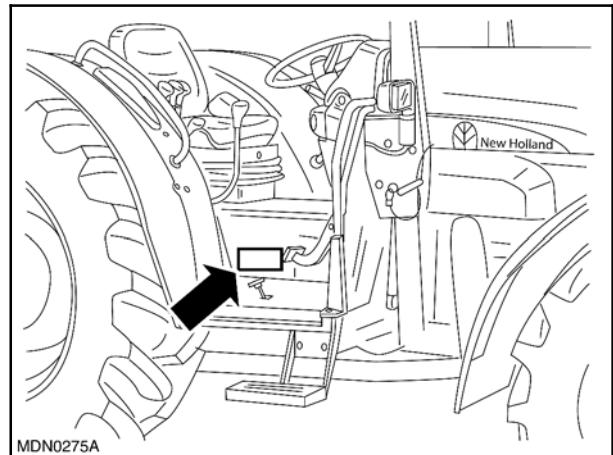
### TRACTOR TYPE-APPROVAL SUMMARY DATA PLATE FOR MODELS WITH ROLL BAR - Fig. 2

The plate is on the right-hand side.

Indicate below the corresponding serial number.

N°

---



2

### TRACTOR TYPE-APPROVAL SUMMARY DATA PLATE FOR MODELS WITH CAB (1)

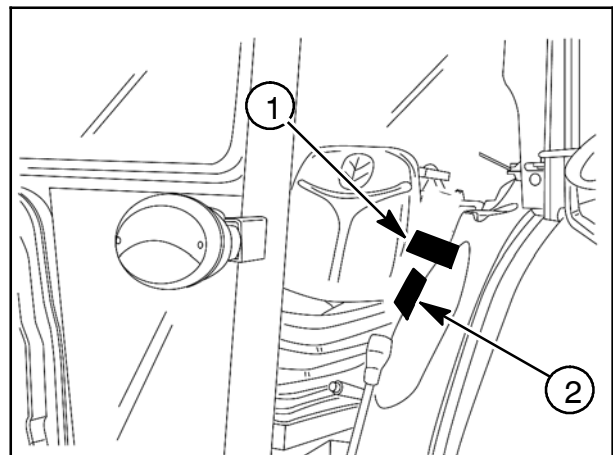
#### CAB IDENTIFICATION PLATE (2)

The plate is inside the cab on the left-hand side.

Indicate below the corresponding serial number.

N°

---



3

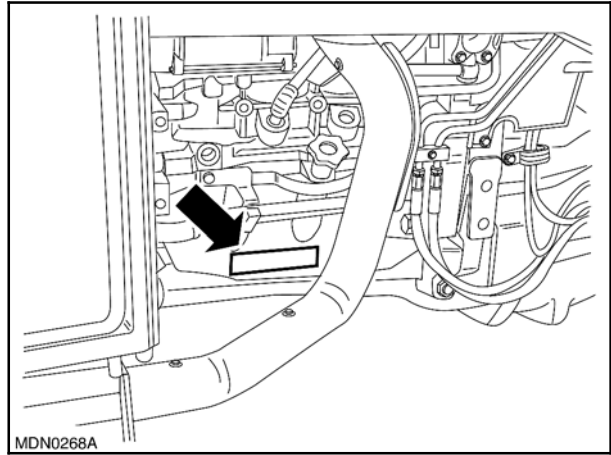
**ENGINE IDENTIFICATION DATA PLATE  
(MODEL T4050F) - Fig. 4**

The plate with the engine data installed on the tractor is fitted on the right-hand side of the engine.

Indicate below the corresponding serial number.

N°

---



MDN0268A

4

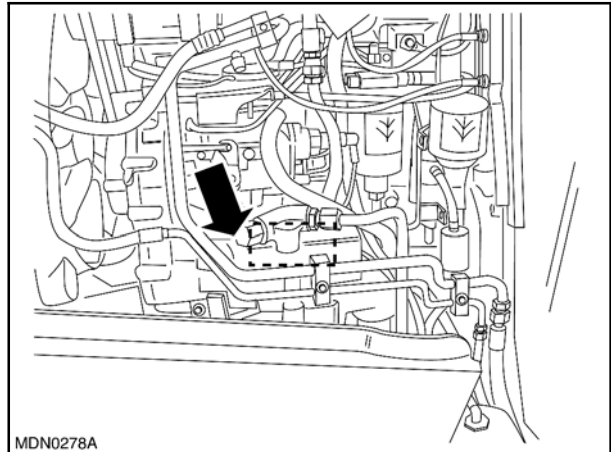
**ENGINE IDENTIFICATION DATA PLATE  
(MODELS T4030F AND T4040F) - Fig. 5**

The plate with the engine data installed on the tractor is fitted on the left-hand side of the engine near the hydraulic pumps.

Indicate below the corresponding serial number.

N°

---



MDN0278A

5

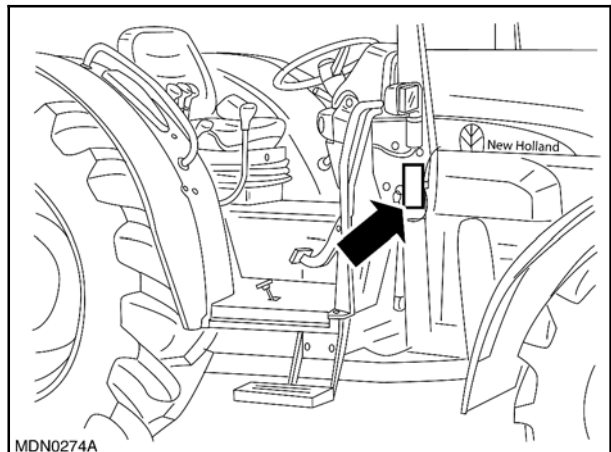
**ROLL BAR IDENTIFICATION PLATE - Fig. 6**

The plate is fitted on the right-hand side on the chassis frame.

Indicate below the corresponding serial number.

N°

---



MDN0274A

6

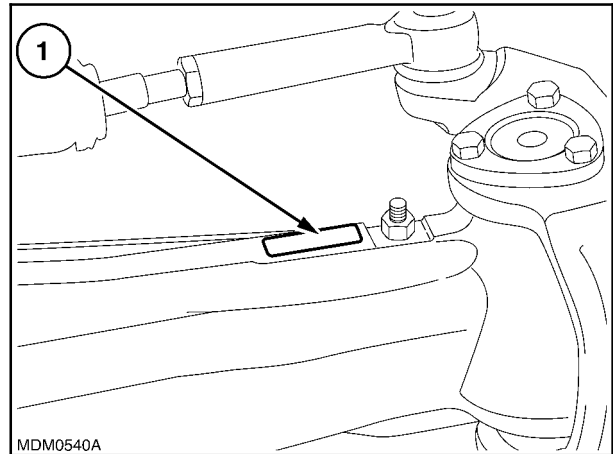
**FRONT AXLE IDENTIFICATION PLATE**  
**- Fig. 7**

The plate (1) is located on the right-hand side and gives the identification data for the axle fitted on the machine.

Indicate below the corresponding serial number.

N°

---



## IMPORTANT ECOLOGICAL CONSIDERATIONS

Soil, air and water are essential elements for agriculture and for life on in general. If local legislation does not control the treatment of certain substances, the production of which is necessitated by advanced technologies, products derived from chemical and petrochemical products must be used and disposed of according to the rules of common sense.

The following recommendations may be of help:

- Find out what the relevant legislation in your country stipulates.
- Ask your suppliers of lubricants, oils, fuels, anti-freeze, detergents, etc.. for information on the effects of these products on humans and the environment and for instructions concerning their use, storage and disposal. In many cases, local agricultural consultants will be able to provide assistance.

## SUGGESTIONS

1. Avoid using unsuitable, pressurised filling systems or fuel cans when filling tanks, as these may cause considerable spillage and leakage of liquids.
2. As a general rule, do not allow liquid fuels, lubricants, acids, solvents, etc., to come into contact with the skin. The majority of these products contain substances that are potential health hazards.
3. Modern lubricants contain additives. Do not burn contaminated fuel oils and/or oils used in conventional heating systems.

4. Avoid spillage when transferring used engine cooling liquids, engine and transmission lubricants, hydraulic oils, brake fluids, etc.. Never mix used brake oil with fuel oil, or fuel oil with lubricants. Store safely until suitable disposal can be arranged according to national legislation or local regulations.
5. Modern anti-freeze liquids and solutions, e.g. anti-freeze and other additives, must be replaced every two years. They must not be left to be absorbed into the ground, but must be collected and disposed of in a suitable manner.
6. Do not open the air conditioning systems to carry out work. These systems contain gas which must not be released into the atmosphere. Contact your dealer or specialised personnel, who are equipped with the appropriate equipment and are authorised to refill the system.
7. Any leakage or defect in the engine cooling or hydraulic systems must be repaired immediately.
8. Do not increase the pressure in pressurised systems, as this may cause component parts to burst.
9. When welding, make sure that hoses are properly protected as sparks or molten material may puncture or weaken the tubes and sleeves, resulting in leakage of oil, cooling liquid, etc.
10. Do not adjust the setting of the fuel delivery system as this will alter the emission of exhaust fumes.

**NOTE: THE ENGINES INSTALLED ON THE TRACTORS COMPLY WITH ANTI-POLLUTION LEGISLATION.**

Thank you so much for reading.  
Please click the “Buy Now!”  
button below to download the  
complete manual.



After you pay.

You can download the most  
perfect and complete manual in  
the world immediately.

Our support email:

[ebooklibonline@outlook.com](mailto:ebooklibonline@outlook.com)