

**NEW HOLLAND**

**T9020**

**T9030**

**T9040**

**T9050**

**T9060**

After S/N Z8F205901

84230656 July 2009  
Replaces 84129381

# OPERATOR'S MANUAL



## PERSONAL SAFETY



*The Safety Alert Symbol and Safety messages that follow indicate extremely important information in this manual. When you see this symbol, carefully read and understand the messages that follow. Failure to read and understand these messages will cause death or serious injury.*

M171D




Throughout this manual and on the machine's safety decals, you will find precautionary statements: **DANGER, WARNING or CAUTION** followed by specific instructions or ISO two panel safety pictorial symbols. These precautions are intended for your personal safety.

Failure to follow the **DANGER, WARNING or CAUTION** instructions may result in death or serious bodily injury.

**DANGER, WARNING or CAUTION** are defined as follows:

- **DANGER:** Indicates an immediate hazardous situation that, if not avoided, will result in death or serious injury. The color associated with Danger is RED.
- **WARNING:** Indicates a potentially hazardous situation that, if not avoided, could result in death or serious injury. The color associated with Warning is ORANGE.
- **CAUTION:** Indicates a potentially hazardous situation that, if not avoided, may result in minor or moderate injury. It may also be used to alert against unsafe practices. The color associated with Caution is YELLOW.

ISO two panel **pictorial symbol decals** are defined as follows:

- The first panel indicates the nature of the hazard.
- The second panel indicates the appropriate avoidance of the hazard.
- Background color is YELLOW.
- Prohibition symbols such as   and  if used, are RED.



# WARNING

IMPROPER OPERATION OF THIS MACHINE COULD CAUSE DEATH OR SERIOUS INJURY. BEFORE USING THIS MACHINE, MAKE CERTAIN THAT EVERY OPERATOR:

- Is instructed in safe and proper use of the machine.
- Reads and understands the Manual(s) pertaining to the machine.
- Reads and understands ALL Safety Decals on the machine.
- Clears the area of other persons.
- Learns and practices safe use of machine controls in a safe, clear area before operating this machine on a job site.

It is your responsibility to observe pertinent laws and regulations and follow CNH America LLC instructions on machine operation and maintenance.

## CNH America LLC Technical Manuals

Manuals are available from your Dealer for the operation, service and repair of your machine. For prompt convenient service, contact your Dealer for assistance in obtaining the manuals for your machine.

Your Dealer can expedite your order for Operators Manuals, Parts Catalogs, Repair Manuals and maintenance records.

Always give the Machine Name, Model and P.I.N. (Product Identification Number) or S.N. (Serial Number) of your machine so your Dealer can provide the correct manuals for your machine.

### CALIFORNIA

#### Proposition 65 Warning

**Diesel engine exhaust and some of its constituents are known to the State of California to cause cancer, birth defects, and other reproductive harm.**

**Battery posts, terminals and related accessories contain lead and lead compounds. Wash hands after handling.**

The company is continually striving to improve its products and therefore reserves the right to make improvements and changes when it becomes practical and possible to do so, without incurring any obligation to make changes or additions to the equipment sold previously.

All data given in this manual is subject to production variations. IMPORTANT: OPERATING AND SERVICE MESSAGES DISPLAYED ON THE ELECTRONIC OPERATING PANEL MAY VARY FROM WHAT IS SHOWN IN THE OPERATOR'S MANUAL. SHOULD THIS OCCUR ADHERE TO THE LATEST INSTRUCTION ON THE ELECTRONIC OPERATING PANEL.

Dimensions and weights are approximate only and the illustrations do not necessarily show the machine in standard condition. For exact information about any particular machine, please consult your dealer.

---

## GENERAL TABLE OF CONTENTS

PERSONAL SAFETY .....	1
<b>1-TO THE OWNER .....</b>	<b>1</b>
GENERAL INFORMATION .....	1
TRACTOR ORIENTATION .....	3
PRODUCT IDENTIFICATION AND SERIAL NUMBERS .....	5
CHEMICAL TANK MOUNTING .....	9
BUSINESS BAND RADIO READY (IF EQUIPPED) .....	10
<b>2-SAFETY/DECALS .....</b>	<b>12</b>
SAFETY .....	12
PERSONAL SAFETY .....	15
INSTRUCTIONAL SEAT SAFETY .....	16
MAINTENANCE SAFETY .....	16
FIRE SAFETY .....	17
BATTERY SAFETY .....	18
MACHINE OPERATION AND ROLL-OVER SAFETY .....	18
HAZARDOUS CHEMICALS .....	19
SAFETY DECALS .....	21
ARTICULATION CYLINDER LOCKING BLOCKS .....	26
MOUNTING AND DISMOUNTING THE TRACTOR .....	26
ROLLOVER PROTECTIVE STRUCTURE .....	27
CLEANING CAB WINDOWS .....	28
RH SERVICE WINDOW .....	28
INTERIOR REAR VIEW MIRROR .....	28
SEAT BELTS .....	29
TRACTOR WARNING LAMPS AND SMV SYMBOL .....	31
IMPLEMENT WARNING LAMPS AND SMV SYMBOL .....	32
SAFETY CHAIN .....	33
<b>3-OPERATING CONTROLS .....</b>	<b>34</b>
TRACTOR ACCESS .....	34
CAB POWER CUT-OFF SWITCH (OPTIONAL) .....	36
OPERATOR'S SEAT WITH AIR SUSPENSION .....	37
INSTRUCTIONAL SEAT (IF EQUIPPED) .....	39
STEERING COLUMN CONTROLS .....	41
FOOT PEDALS .....	42
CENTER CONSOLE CONTROLS .....	43
24-SPEED TRANSMISSION CONTROLS (IF EQUIPPED) .....	44
RIGHT HAND ARMREST CONSOLE CONTROLS .....	45
RH ARMREST CONTROL CONSOLE .....	46
ARMREST CONSOLE CONTROLS .....	53
6TH-7TH/MEGAFLOW ELECTRIC REMOTE VALVES (IF EQUIPPED) .....	55
AUTO GUIDANCE ROADING SWITCH (IF EQUIPPED) .....	55
UPPER CONSOLE CONTROLS .....	56
MP3 PLAYER/SATELLITE RADIO JACK .....	59
HVAC CONTROL SYSTEM .....	60
AUTOMATIC TEMPERATURE CONTROL OPERATION .....	6
POWER MIRROR CONTROL (IF EQUIPPED) .....	64

---

<b>4-INSTRUMENTATION</b> .....	<b>68</b>
ROPS POST INSTRUMENT CLUSTER OVERVIEW .....	68
ICON DESCRIPTION .....	74
PROGRAMMING THE DISPLAY MONITOR .....	76
OLD HOURS .....	83
PROGRAM ADJUST MENU .....	84
WARNING FAULT DISPLAYS .....	88
INSTRUMENTATION CLUSTER OPERATION .....	95
DIAGNOSTIC DISPLAY .....	111
<b>5-OPERATING INSTRUCTIONS</b> .....	<b>112</b>
BEFORE STARTING THE ENGINE .....	112
SEAT BELTS .....	113
STEERING COLUMN ADJUSTMENT .....	114
STARTING THE ENGINE .....	115
COLD WEATHER STARTING .....	117
STARTING FLUID CONTAINER REPLACEMENT (T9060 ONLY, IF EQUIPPED) .....	119
STOPPING THE ENGINE .....	120
COLD TEMPERATURE OPERATION .....	121
TOWING THE TRACTOR .....	124
TRANSPORTING THE TRACTOR .....	126
POWERSHIFT TRANSMISSION OPERATION (IF EQUIPPED) .....	127
CONSTANT GROUND SPEED OPERATION .....	132
24-SPEED TRANSMISSION OPERATION (IF EQUIPPED) .....	143
DIFFERENTIAL LOCK (IF EQUIPPED) .....	146
CONSTANT ENGINE SPEED OPERATION (IF EQUIPPED) .....	147
<b>6-FIELD OPERATION</b> .....	<b>148</b>
POWER TAKEOFF (IF EQUIPPED) .....	148
OPERATING THE POWER TAKEOFF (PTO) .....	151
STANDARD DRAWBAR .....	153
THREE POINT HITCH PREPARATION .....	157
HITCH COUPLER - CATEGORY III OR IV-N .....	162
HITCH OPERATION .....	166
RAISING AND LOWERING THE HITCH .....	167
REMOTE HYDRAULICS .....	179
AUXILIARY IMPLEMENT POWER CONNECTIONS .....	192
<b>7-IN-FIELD PERFORMANCE</b> .....	<b>196</b>
TRACTOR BALLAST .....	196
FRONT AND REAR SUITCASE WEIGHTS .....	202
WHEEL WEIGHTS .....	205
WHEEL WEIGHT BOLT TORQUE .....	206
TIRE AND RIM SERVICE .....	207
TIRE PRESSURE FOR MAXIMUM TIRE LOAD AT RATED INFLATION .....	211
WHEEL BOLT TORQUES .....	214
SCRAPER OPERATING PROCEDURES .....	226

---

<b>8-LUBRICATION/FILTERS/FLUID/MAINTENANCE</b> .....	<b>227</b>
LUBRICATION AND MAINTENANCE .....	227
LUBRICANTS AND CAPACITIES .....	227
ENGINE LUBRICATION .....	228
LUBRICATION AND MAINTENANCE CHART .....	230
BIODIESEL FUEL .....	234
GRILLE AND HOOD ACCESS .....	235
AIR INDUCTION SYSTEM .....	263
PRESSURE COOLING SYSTEM .....	297
SCA SERVICE REQUIREMENTS (T9020 AND T9060 ONLY) .....	297
DISASSEMBLY, DECOMMISSIONING OR SCRAPPING THE MACHINE .....	299
<b>9-ELECTRICAL SYSTEM</b> .....	<b>300</b>
SPECIFICATIONS .....	300
FUSES .....	300
GENERAL SERVICE INFORMATION .....	306
<b>10-SPECIFICATIONS</b> .....	<b>307</b>
GENERAL SPECIFICATIONS .....	307
TRACTOR WEIGHTS .....	310
APPROXIMATE TRAVEL SPEEDS (MPH) .....	311
APPROXIMATE OVERALL MEASUREMENTS .....	318
<b>11-DETAIL INDEX</b> .....	<b>319</b>

## GENERAL INFORMATION

### Introduction to this Manual

This manual contains important information about the safe operation, adjustment and routine maintenance of your T9000 Series Tractor. The manual is divided into ten sections as outlined in the General Table of Contents Page(s). Refer to the Detail Index at the end of this manual for locating specific items about your tractor.

Use this manual as a guide. Your tractor will remain a reliable working machine as long as it is kept in good working condition and serviced properly.

Read this manual before you start the engine or operate this tractor. If any information in this manual is not understood, or if you need more information or assistance, contact your dealer.

All persons training to operate, or who will be operating this tractor, should be old enough to possess a valid local vehicle operating permit (or other applicable local age requirement) and must have demonstrated the ability to operate and service the tractor correctly and safely.

### Statement of Tractor Intended Use

The T9000 Series Tractor, with standard equipment and authorized attachments, is intended to be used for customary farming, land leveling and related agriculture operations.

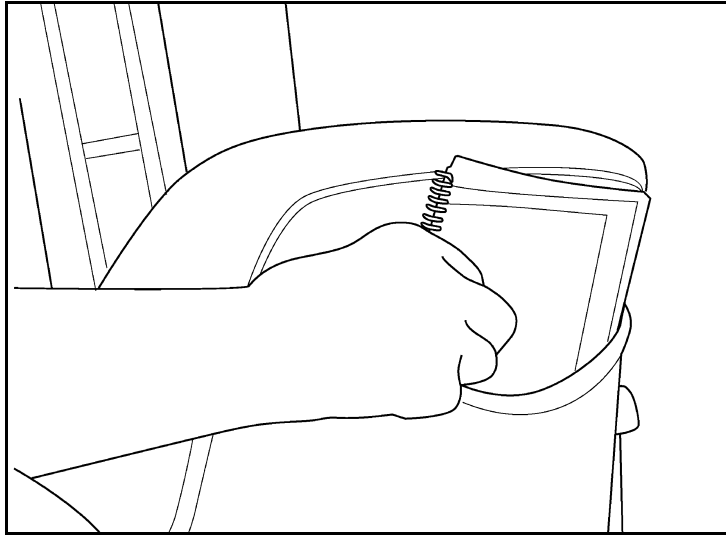
Installation of utility (dozer) blades, tile plows, front loaders or push bars on the tractor is not recommended. Any tractor damage resulting from the installation and/or use of such equipment is not covered by the tractor warranty.

DO NOT use this machine for any purpose or in any manner other than as described in the manual, decals or other product safety information provide with the machine. These materials define the machine's intended use.

If your tractor requires replacement parts, do not use unauthorized parts or substitute materials. New Holland dealers stock New Holland approved service parts and have technicians with special training that know the best methods of repair and maintenance for your tractor.

**ATTENTION:** *The engine and fuel system on your machine is designed and built to government emissions standards. Tampering by dealer, customers, operators and users is **strictly prohibited by law**. Failure to comply could result in government fines, rework charges, invalid warranty, legal action and possible confiscation of the machine until rework to original condition is completed. Engine service and/or repairs must be done by a certified technician only!*

## Operator Manual Storage Compartment



MK99H025

**DO NOT** permit anyone to operate or service this tractor until you or other operators have read this manual. The Operator's Manual is a part of your tractor and must be available to all operators.

Make sure the manual is complete and in good condition. Store the Operator's Manual and other important tractor information in the storage compartment provided on the rear side of the seat backrest.

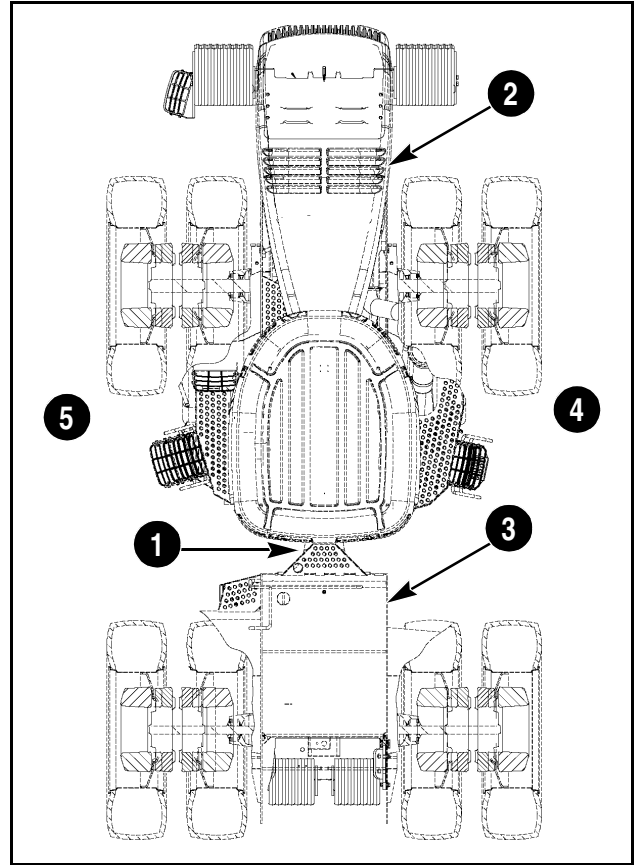


## TRACTOR ORIENTATION

The T9000 Series Tractor is classified as a four-wheel drive articulating vehicle. The standard tractor consists of front and rear frame assemblies that steer by pivoting at the center articulation joint (1).

The standard tractor front frame (2) incorporates the engine, front axle, transmission and cab. The rear frame (3) incorporates the rear axle and fuel tank.

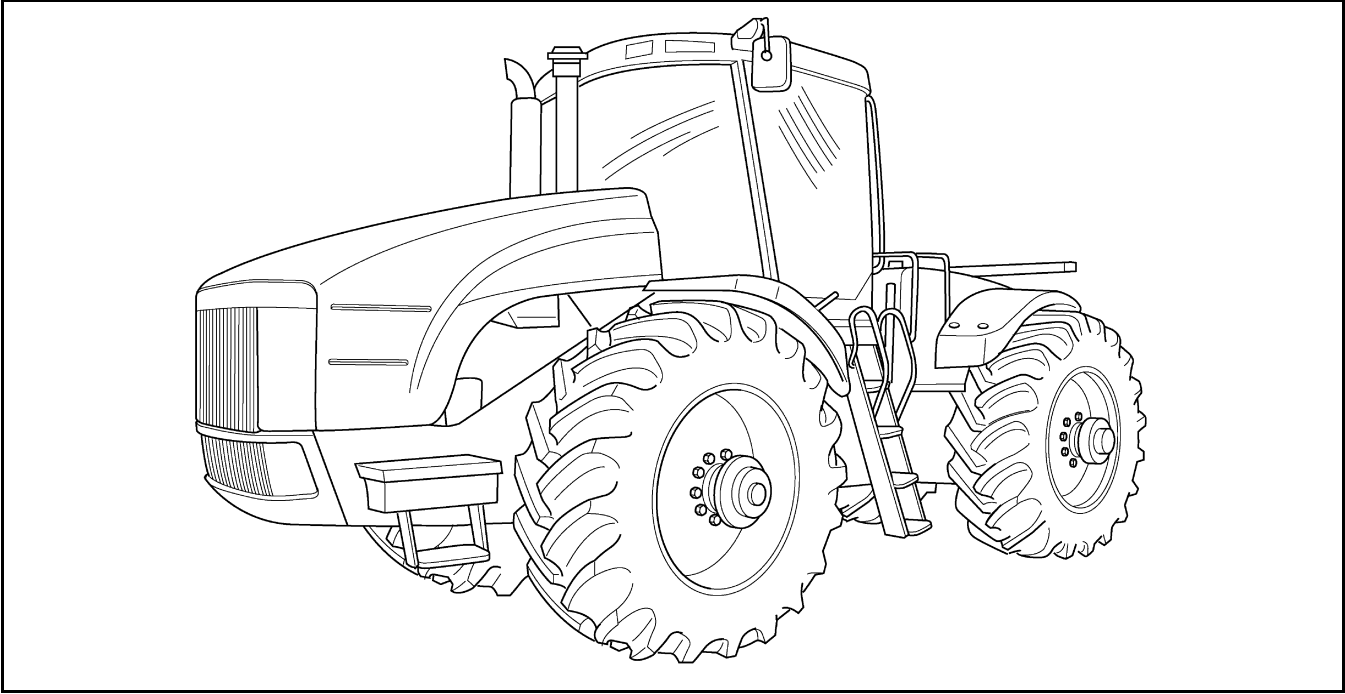
The right hand (RH) (4) and left hand (LH) (5) side of the tractor as used in this manual are the same as your right hand and left hand when sitting in the operator's seat looking forward over the engine.



MA00A013

- |                                 |                    |
|---------------------------------|--------------------|
| 1. CENTER ARTICULATION JOINT    | 4. RIGHT-HAND SIDE |
| 2. STANDARD TRACTOR FRONT FRAME | 5. LEFT-HAND SIDE  |
| 3. REAR FRAME                   |                    |

## T9000 SERIES NEW HOLLAND TRACTORS



MK01G135

## PRODUCT IDENTIFICATION AND SERIAL NUMBERS

Write your machine Model Number, Product Identification Number (P.I.N.) and Serial Numbers of major components on the lines provided.

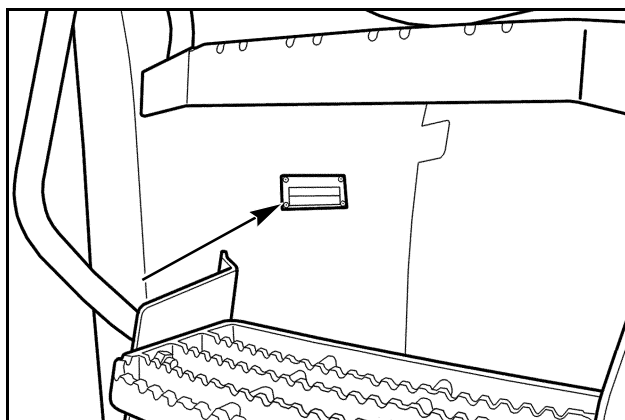
If needed, give these numbers to your dealer when you need parts or information for your machine.

### Tractor Model and Product Identification Numbers

Model: \_\_\_\_\_

P.I.N. \* Z: \_\_\_\_\_

Located on the upper back side of the LH front fender.

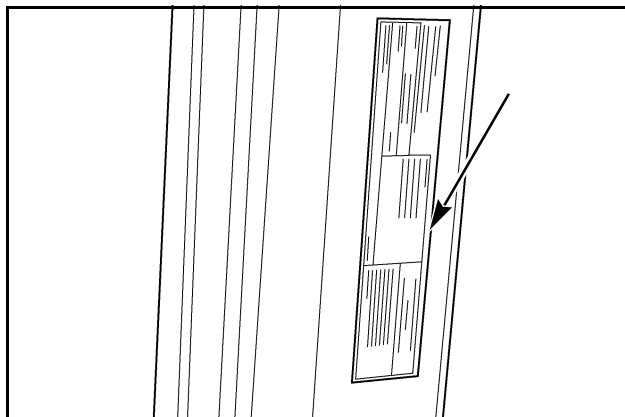


MT04M004

### Rollover Protective Structure (ROPS) Serial Number

\_\_\_\_\_

Located under the cover of the LH front ROPS post.

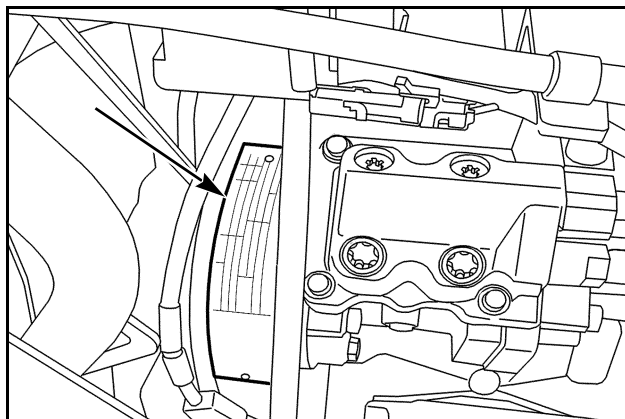


MK01G271

### Engine Serial Number (T9020)

\_\_\_\_\_

Located on the top LH side of the engine fuel pump drive cover.

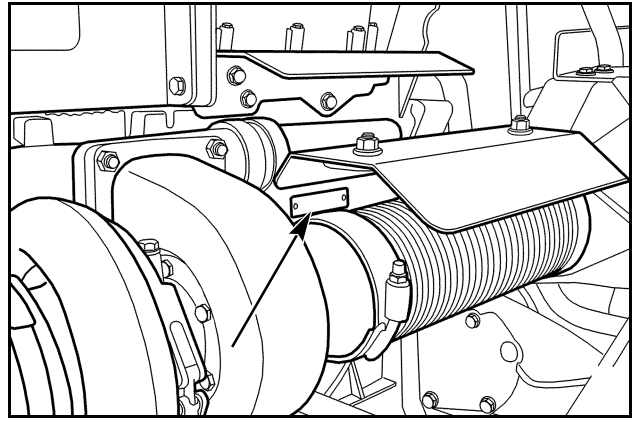


MT07F140

## Engine Serial Number (T9030-T9040)

\_\_\_\_\_

Located on the LH upper side under the heat shield.

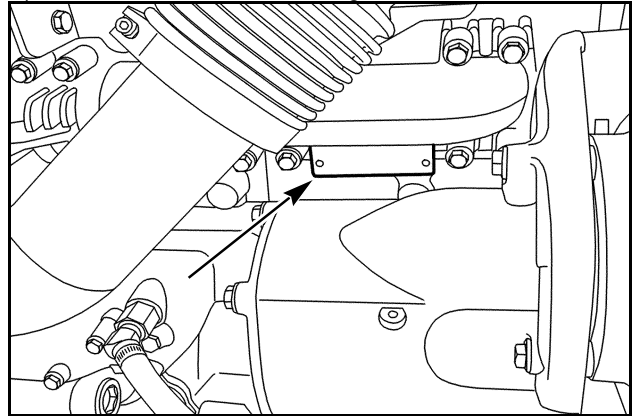


MT05M015

## Engine Serial Number (T9050)

\_\_\_\_\_

Located on the LH upper side behind compound turbo gear box.

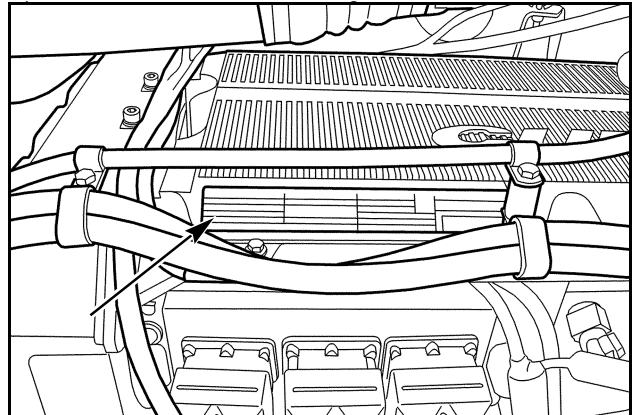


MT07F083

## Engine Serial Number (T9060)

\_\_\_\_\_

Located on the LH upper side under the heat shield.

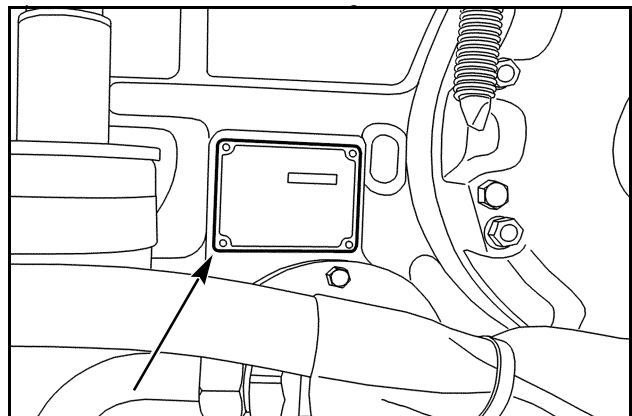


MT05M016

## Transmission Serial Number

\_\_\_\_\_

Located on the LH rear side of the transmission.



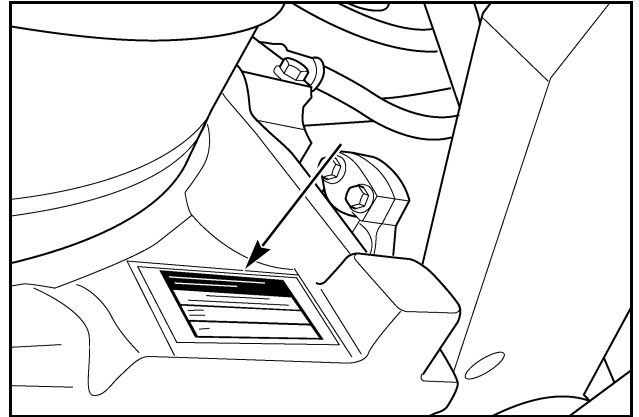
MT07F084

### Axle Serial Number (T9020)

Front \_\_\_\_\_

Rear \_\_\_\_\_

Located on the side of the axle center housing.



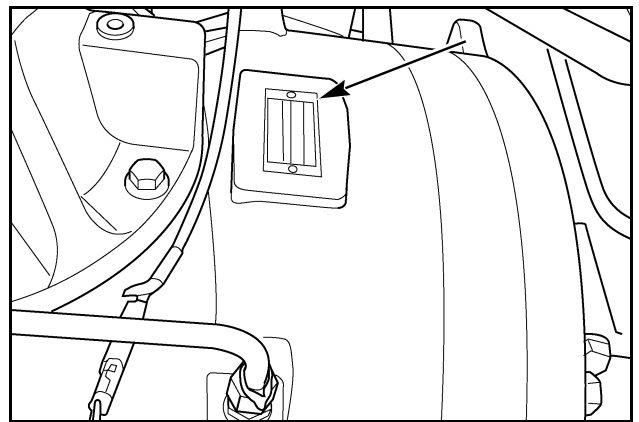
MK99K097

### Axle Serial Number (T9030, T9040, T9050, T9060)

Front \_\_\_\_\_

Rear \_\_\_\_\_

Located on the final drive housing.



MK01G070

Thank you so much for reading.  
Please click the “Buy Now!”  
button below to download the  
complete manual.



After you pay.

You can download the most  
perfect and complete manual in  
the world immediately.

Our support email:

[ebooklibonline@outlook.com](mailto:ebooklibonline@outlook.com)