

T5030 / T5040 / T5050 / T5060 / T5070

OPERATOR'S MANUAL

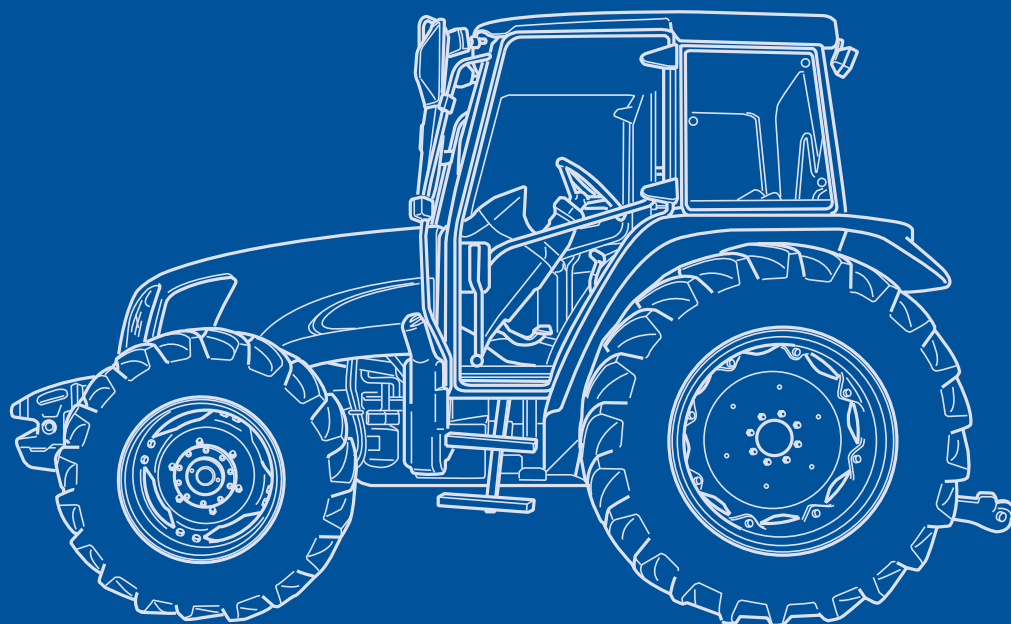
T5030

T5040

T5050

T5060

T5070



Print No. 84315667

1st edition

English 03/10

ORIGINAL INSTRUCTIONS - according to Directives 2006/42/EC, Annex I 1.7.4.1

OPERATOR'S MANUAL

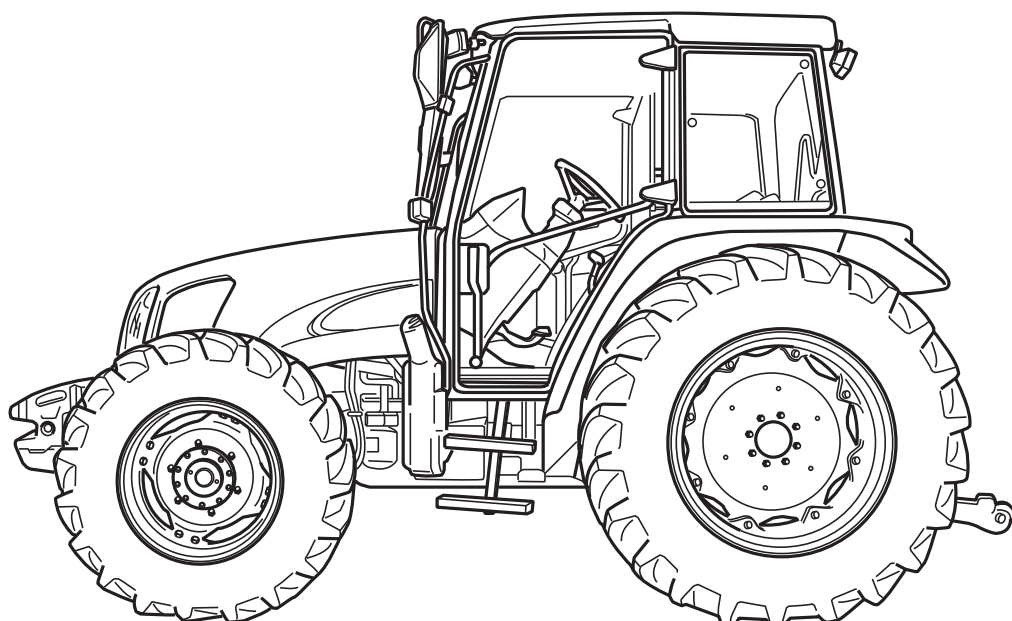
T5030

T5040

T5050

T5060

T5070



Print No. 84315667

1st edition
English 03/10



SECTION SUMMARY

- 1 - Introduction and safety measures**
- 2 - General Information, Controls and Instruments**
- 3 - Field operation**
- 4 - Lubrication and Maintenance**
- 5 - Troubleshooting**
- 6 - Vehicle storage**
- 7 - Accessories**
- 8 - Specifications and Data**
- 9 - First 50 hour Service Forms**
- 10 - Alphabetical Index**

Electromagnetic Interference (EMC)

This tractor complies strictly with the European Regulations on electromagnetic emissions.

However, interference may arise as a result of add-on equipment which may not necessarily meet the required standards.

As such interference can result in serious malfunction of the unit and/or create unsafe situations, you must observe the following:

- Ensure that each piece of non-New Holland equipment fitted to the tractor bears the mark.



- The maximum power of electromagnetic emission equipment (radio, telephones, etc.) must not exceed the limits imposed by the national authorities of the country where you use the tractor.
- The electromagnetic field generated by the add-on system should not exceed 24 V/m at any time and at any location in the proximity of electronic components.

Failure to comply with these rules will render the New Holland warranty null and void.

CONTENTS

Section - Page

SECTION 1 - Introduction and safety measures

Communications for the user	1-1
Tractor identification	1-2
Important ecological considerations	1-5
Always work safely	1-6
Working safely	1-7
Safety decals	1-13
Tractor noise level information sheet	1-18
Components identification	1-19

SECTION 2 - General Information, Controls and Instruments

General notes, controls and instruments	2-1
Before using the tractor	2-1
Control panel	2-2, 2-7
Operating controls	2-42
Seat adjustment	2-45
Cab	2-51
Air conditioned cab	2-60
Transmission with range gear and shuttle - 18.64 mph (30 km/h) (12F + 12R - Synchro shuttle)	2-64
Transmission with range gear and hydraulic power shuttle - 18.64 mph (30 km/h) (12F + 12R - Power shuttle)	2-67
Transmission with creeper and shuttle - 18.64 or 24.85 mph (30 or 40 km/h) (20F + 12R) - Synchro shuttle	2-70
Transmission (30 or 40 km/h) (20F + 20R) - Power shuttle	2-73
Transmission with dual command (2 Speed Power Shift) / electro-hydraulic power-shuttle 18.64/24.85 mph (30/40 km/h) (24F + 24R)	2-78

SECTION 3 - Field operation

Field operation	3-1
Starting in low outside temperature conditions	3-2
Starter key switch	3-3
Starting with grid heater on request	3-3
Electrohydraulically controlled four-wheel drive	3-6
Rear mechanical differential lock (with mechanical control - standard)	3-8
Braking system	3-11
Power take-off	3-17
Mechanically operated hydraulic lift	3-25
Electronically controlled hydraulic lift	3-29
Three-point linkage	3-43
Implement connection points	3-48
Auxiliary remote control valves	3-52
Auxiliary remote control valves (De Luxe version)	3-56
Track adjustment	3-59
Tyre combinations	3-74
Ballast	3-77
Permitted maximum weights	3-82

SECTION 4 - Lubrication and Maintenance

Lubrication and maintenance	4-1
Access for inspection and maintenance	4-7
Lubrication and maintenance table	4-8
Flexible maintenance	4-11
Instrument panel warning lights	4-17
Every 10 hours of work	4-20
Every 50 hours of work	4-22
Every 100 hours of work	4-25
Every 300 hours of work	4-27
Every 600 hours of work	4-32
Every 1200 hours or every year	4-35
Every 1200 hours of work or every 2 years	4-36
Every 1800 hours of work	4-41
General Maintenance	4-42
Electrical System	4-42
Recommendations for bodywork maintenance	4-42
Consumables	4-68

SECTION 5 - Troubleshooting

Engine	5-2
Electrical system	5-5
Hydraulic circuit	5-6
Hydraulic lift and 3-point linkage	5-7
Braking system	5-8
Cab	5-8

SECTION 6 - Vehicle storage

Prolonged tractor inactivity	6-1
------------------------------------	-----

SECTION 7 - Accessories

Quick fit implement linkage	7-2
Towing equipment	7-4
Fold-down roll bar	7-12
Joystick for auxiliary control valves (optional)	7-13
Front loader prearrangement	7-15
Control valve for trailer hydraulic brakes	7-16

SECTION 8 - Specifications and data

SECTION 9 - Alphabetical index

SECTION 1

NOTICE TO USERS

SERVICE PARTS

“Non-original” spare parts have not been tested or authorised by the Manufacturer. Installment and/or use of such products may adversely affect the tractor’s design specifications, thereby compromising operational safety. The manufacturer cannot be held responsible for any damage resulting from the use of “non-original” spare parts.

No modifications may be made to the tractor without written authorisation from the Manufacturer.

WARRANTY

The tractor is guaranteed in accordance with current legislation in your country and in line with contractual agreements reached with the dealer at the time of sale. However, the warranty is no longer valid if the rules and instructions for the use and maintenance of the tractor, described in this Manual, are not observed.

CLEANING THE TRACTOR

Your tractor is an advanced machine, fitted with an electrohydraulic control system. Care must be taken when cleaning the tractor, especially if a pressurized water cleaner is used.

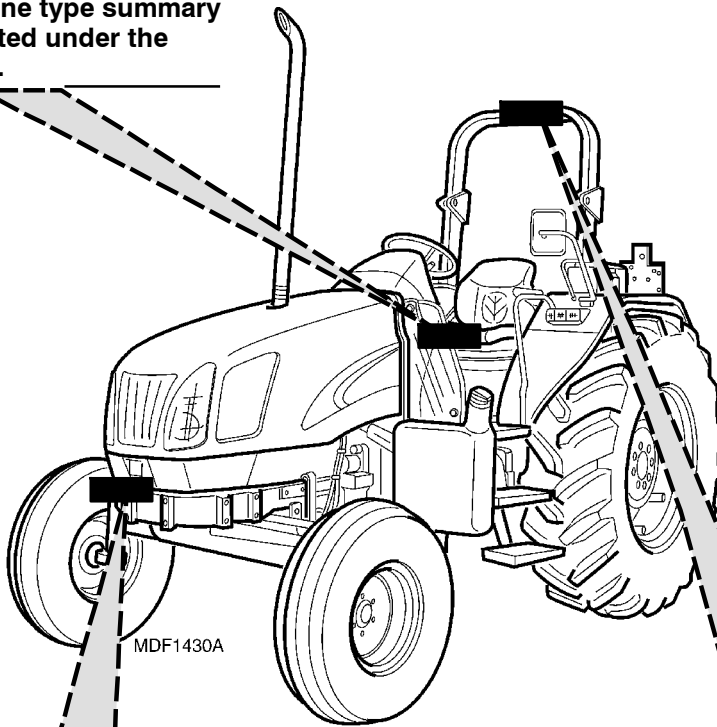
- Never stand too close to the tractor or direct the water jet on electrical components, seals or intake openings, etc.
- Never direct jets of cold water at the hot engine or exhaust.

TRACTOR IDENTIFICATION

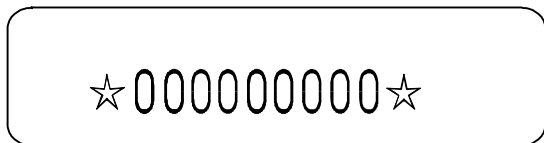
Serial numbers identify the tractor and its main components. The identification data must be supplied by the dealer for requests for spare parts or service operations. Identification data is of fundamental importance in the event of theft of the tractor. The location of the various identification data is shown below.

CNH EUROPE HOLDING S.A. MADE IN ITALY	
XXXX	CE
XXXXXXXXXXXX	PG
XXXXXXXXXXXXXXXX	MP24
XXXXX XXXXX XXXXXXXX (x)	
XXXXX XXXX XXXXXXX XXXXXXX (x)	XX: X:
XXXXX XXXX XXXXXXX XXXXXXX (x)	XX: X:
XXXXX XXXX XXXXXXXXXX	
XXXXX XXXX XXXXXXX (x)	
XXXXX XXXXXXX XX XXXXXXX XX XXXXXXX (x)	
XXXXX XXXXXXX XX XXXXXXX XX XXXXXXX (x)	
XXXXX XXXXXXX XX XXXXXXX XX XXXXXXX (x)	

Frame and engine type summary data plate (located under the steering wheel).

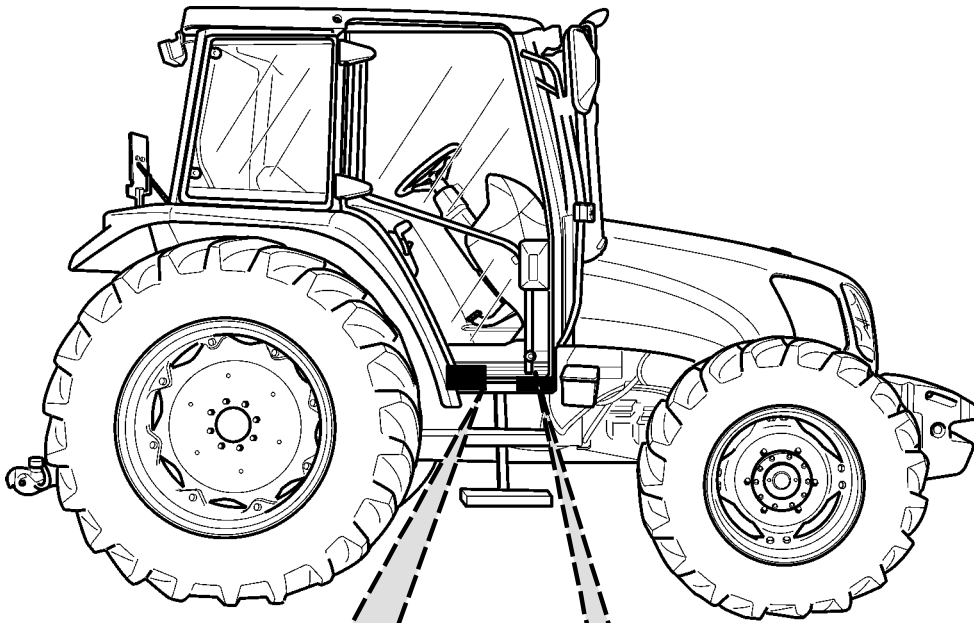


Tractor frame number identification data plate (stamped on the axle support under the bonnet).





Frame identification data plate.

EUROPE	SAFETY STRUCTURE	TYPE/MODEL	Italy
	STRUCTURE TESTED		
SAC	D.E.C.U./REPORT-		Abnorma
	CSMA:		
FRANCE	TO		Abnorma
	MARQUAGE STRUCTURE		
NEW HOLLAND	SF: TS - N°		Abnorma
	DIC' GODDENDT AF DIREKTORIN FOR ARBEJDSSTYKNET		
	VEHICLE WEIGHT FOR SAE TEST	Kg LB	
	STRUCTURE SERIAL	N°	

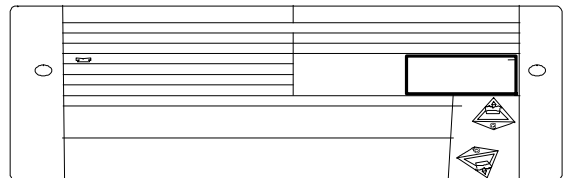


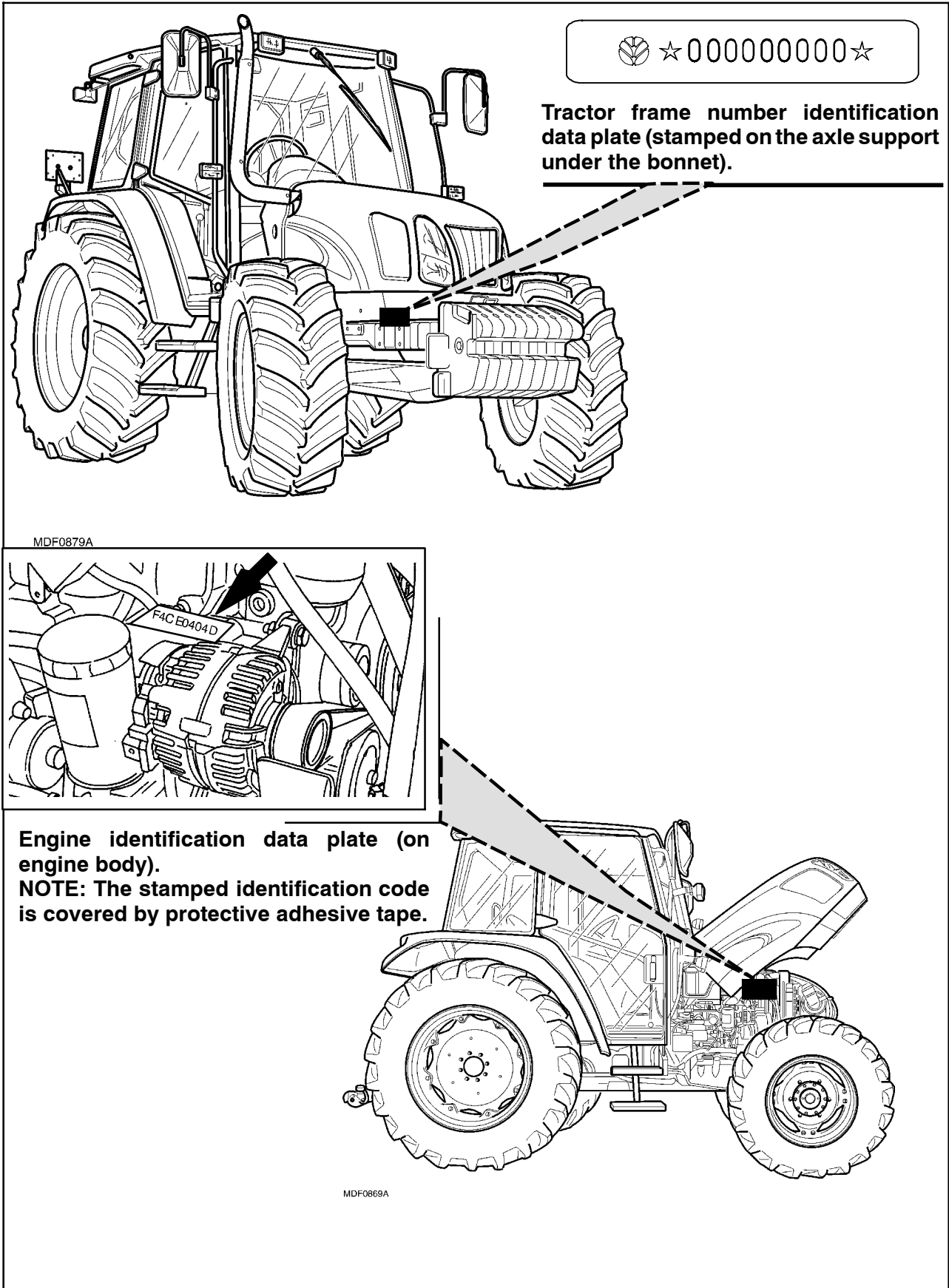
MDF0867A

Frame and engine type identification data plate (inside the cab).

CNH EUROPE HOLDING S.A. MADE IN ITALY	
XXXX	 
XXXXXXXXXXXX	
XXXXX XXXXXXXXXXXX	
XXXXXX XXXXX XXXXXXXXXXX (x)	
XXXXXX XXXX XXXXXXX XXXXXXX (x)	XX: X:
XXXXXX XXXX XXXXXXX XXXXXXX (x)	XX: X:
XXXXXX XXXX XXXXXXXXXXX	
XXXXXX XXXX XXXXXXX (x)	
XXXXXX XXXXXXX XX XXXXXXX XX XXXXXXX(x)	
XXXXXX XXXXXXX XX XXXXXXX XX XXXXXXX(x)	
XXXXXX XXXXXXX XX XXXXXXX XX XXXXXXX(x)	

Cab identification data plate.





IMPORTANT ECOLOGICAL CONSIDERATIONS

Soil, air and water are essential elements for agriculture and for life in general. If local legislation does not control the treatment of certain substances, the production of which is necessitated by advanced technologies, products derived from chemical and petrochemical products must be used and disposed of according to the rules of common sense.

The following recommendations may be of help:

- Find out what the relevant legislation in your country stipulates.
- Ask your suppliers of lubricants, oils, fuels, anti-freeze, detergents, etc. for information on the effects of these products on humans and the environment and for instructions concerning their use, storage and disposal. In many cases, local agricultural consultants will be able to provide assistance.

SUGGESTIONS

1. Avoid using unsuitable, pressurised filling systems or fuel cans when filling tanks, as these may cause considerable spillage and leakage of liquids.
2. As a general rule, do not allow liquid fuels, lubricants, acids, solvents, etc., to come into contact with the skin. The majority of these products contain substances that are potential health hazards.
3. Modern lubricants contain additives. Do not burn contaminated fuel oils and/or oils used in conventional heating systems.
4. Avoid spillage when transferring used engine cooling liquids, engine and transmission lubricants, hydraulic oils, brake fluids, etc. Never mix used brake oil with fuel oil, or fuel oil with lubricants. Store safely until suitable disposal can be arranged according to national legislation or local regulations.
5. Modern anti-freeze liquids and solutions, e.g. anti-freeze and other additives, must be replaced every two years. They must not be left to be absorbed into the ground, but must be collected and disposed of in a suitable manner.
6. Do not open the air conditioning systems to carry out work. These systems contain gas that must not be released into the atmosphere. Contact your dealer or specialised personnel, who are equipped with the appropriate equipment and are authorised to re-fill the system.
7. Any leakage or defect in the engine cooling or hydraulic systems must be repaired immediately.
8. Do not increase the pressure in pressurised systems, as this may cause component parts to burst.
9. When welding, make sure that hoses are properly protected as sparks or molten material may puncture or weaken the tubes and sleeves, resulting in leakage of oil, cooling liquid, etc.
10. Do not adjust the setting of the fuel delivery system as this will alter the emission of exhaust fumes.

NOTE: THE ENGINES INSTALLED ON THE TRACTORS COMPLY WITH ANTI-POLLUTION LEGISLATION.

ALWAYS WORK SAFELY



This warning symbol points out important messages concerning your safety.

Read the following safety regulations carefully and follow the recommendations in order to avoid potential hazards and safeguard your health and safety.

In this manual the symbol is accompanied by the following keywords:



Indicates an immediate hazardous situation, that, if not avoided, will result in death or serious injury.



Indicates a potential hazardous situation that, if not avoided, could result in serious injury.



Indicates a potential hazardous situation that, if not avoided, may result in minor injury or machine damage. This can also be used to alert against unsafe practises.

Failure to observe the instructions preceded by the aforementioned key words may result in severe or fatal injury to the persons involved.

Furthermore, this manual also contains instructions preceded by the terms **NOTE** and **IMPORTANT**, with the following relevance in relation to machine protection:

IMPORTANT: This is used to highlight important information for machine usage or specific procedures to prevent minor machine damages.

NOTE: This is used to identify and present supplementary information.

IMPORTANT WARNINGS

The machine is designed and produced exclusively for agricultural use.

All other use will be considered to be contrary to the use specified by NEW HOLLAND, who cannot be held liable for damage to property or the machine, or for personal injuries which may result.

Persons who risk improper use will therefore assume the responsibility for any consequences arising from such use.

Compliance with the instructions for use, maintenance and repairs described in this manual, are the essential preconditions for the use specified by NEW HOLLAND.

The machine must only be used, serviced or repaired by personnel trained in the relevant working methods and safety regulations and who have been authorised to work on the machine.

The user must also observe the rules concerning general safety and accident prevention, including the Highway Code when driving on public highways.

Any arbitrary modifications made to this machine will release NEW HOLLAND from any liability resulting from damage or injury.

NEW HOLLAND and all its distribution organisations, inclusive of, but not restricted to, national, regional or local distributors, cannot be held liable for damage resulting from the malfunction of parts and/or components not approved by NEW HOLLAND.

Under no circumstances will a guarantee be issued for products made or sold by NEW HOLLAND that are damaged as a result of the malfunction of parts and/or components not approved by NEW HOLLAND.

Thank you so much for reading.
Please click the “Buy Now!”
button below to download the
complete manual.



After you pay.

You can download the most
perfect and complete manual in
the world immediately.

Our support email:

ebooklibonline@outlook.com