

ORIGINAL INSTRUCTIONS
- according to Directive 2006/42/EC, Annex I, 1.7.4.1

Farmall 45A
Farmall 55A
Tractors

OPERATOR'S MANUAL

Part Number 84339155

1st edition English
May 2011



LIST OF SECTIONS

Section 1 - General Information and Safety

Section 2 - Controls, Instruments and Operation

Section 3 - Field Operation

Section 4 - Lubrication and Maintenance

Section 5 - Fault Finding

Section 6 - Vehicle Storage

Section 7- Specifications

CONTENTS

Title	Page
Section 1 - General Information and Safety	
CE declaration of conformity document	1-1
Metric and imperial units abbreviations	1-3
Product identification	1-8
Assemblies and serial numbers	1-10
Ecology and the environment	1-11
Precautionary statements	1-12
Safety precautions	1-13
Fire extinguisher	1-19
Biodiesel fuel	1-20
General and safety decals	1-21
International symbols	1-31
Airborne noise emission	1-32
Tractor vibration level information sheet	1-33
Machine stability	1-34
Necessary data to evaluate stability (Farmall 45A 2WD/4WD)	1-35
Constant parameters (Farmall 45A 2WD/4WD)	1-36
Necessary data to evaluate stability (Farmall 55A 2WD/4WD)	1-37
Constant parameters (Farmall 55A 2WD/4WD)	1-38
Axle load limits	1-39
Rops, fops, ops protection	1-40
Service area, Fire extinguisher, First aid kit	1-41
Fuel saving tips	1-42
Installation and working with front loader on tractors	1-43
Intended use of your tractor	1-44
About this manual	1-45
Section 2 - Control, Instruments and Operation	
Operator's Seat	2-2
Instrument Panel, Gauges and Warning Lights	2-3
Hand Controls and Switches	2-4
Rops and seat belt	2-6
Foot Controls	2-8
Front wheel drive	2-10
8 + 2 Speed Constant Mesh Transmission	2-11
8 x 8 Speed Synchro Shuttle Transmission	2-12
Section 3 - Field Operation	
Running-in Procedure	3-1
Pre-Operation Checks	3-1
Starting the Tractor	3-3
Operator pressure logic system	3-6
Stopping the Engine	3-7

Power Take-Off	3-8
Three Point Linkage	3-11
Towing Attachments	3-15
Hydraulic System	3-17
Track Adjustments	3-20
Tractor Ballasting	3-25
Tyre Inflation	3-28

Section 4 - Lubrication and Maintenance

General information	4-1
Lubrication and Manintenance Chart	4-5
10 hour/daily service	4-6
50 hour service	4-7
100 hour service	4-13
300 hour service	4-16
600 hour service	4-21
1200 hour/12 month service	4-23
General Maintenance	4-28
Protecting Electronic/Electrical Systems During Battery Charging and Welding	4-31

Section 5 - Fault Finding

Engine	5-2
Electrical System	5-5
Hydraulic System	5-6
Hydraulic Lift and Three Point Linkage	5-6
Brakes	5-6

Section 6 - Vehicle Storage


Tractor Storage	6-1
Preparation for Use After Storage	6-1

Section 7 - Specification

Engine	7-2
Cooling System	7-2
Electrical System	7-3
Fuel System	7-3
Brakes	7-3
Steering	7-4
Power Take Off	7-4
Hydraulic System	7-4
Three Point Linkage	7-5
Clutch System	7-5
General Dimensions	7-8
Tractor Weight	7-9
Lubricants and Coolants	7-11

SECTION 1 - GENERAL INFORMATION & SAFETY

CE DECLARATION OF CONFORMITY DOCUMENT

Class of 2006/42/EC Annex I	BG - Декларация ЕС за съответствие (Именен лист 2006/42/EC)	CZ - Prohlášení o shodě ES (Prohlášení o shodě 2006/42/EC)	DA - EU-overensstemmelseserklæring (Ihæftede af direktiv 2006/42/EF)	DE - EG-Konformitätserklärung (Ihæftede af Richtlinie 2006/42/EG)	EL - Δήλωση Συμμόρφωσης ΕΚ (Ihæftede af τη οδηγία 2006/42/ΕΚ)	
1.A.1	Имен (1)	Имен (1)	Имен (1)	Имен (1)	Имен (1)	 <p style="font-size: small;">CASE II CNI Europe Holding S.A. Rue ABBington, 1 L-1118 Luxembourg (Luxembourg)</p>
1.A.2	Имен (1) CNI Europe Holding S.A. Rue ABBington L-1118 Luxembourg	Имен (1) CNI Europe Holding S.A. Rue ABBington L-1118 Luxembourg	Имен (1) CNI Europe Holding S.A. Rue ABBington L-1118 Luxembourg	Имен (1) CNI Europe Holding S.A. Rue ABBington L-1118 Luxembourg	Имен (1) CNI Europe Holding S.A. Rue ABBington L-1118 Luxembourg	
1.A.3	Имен (1) CNI Europe Holding S.A. Rue ABBington L-1118 Luxembourg	Имен (1) CNI Europe Holding S.A. Rue ABBington L-1118 Luxembourg	Имен (1) CNI Europe Holding S.A. Rue ABBington L-1118 Luxembourg	Имен (1) CNI Europe Holding S.A. Rue ABBington L-1118 Luxembourg	Имен (1) CNI Europe Holding S.A. Rue ABBington L-1118 Luxembourg	
1.A.4	Имен (1) CNI Europe Holding S.A. Rue ABBington L-1118 Luxembourg	Имен (1) CNI Europe Holding S.A. Rue ABBington L-1118 Luxembourg	Имен (1) CNI Europe Holding S.A. Rue ABBington L-1118 Luxembourg	Имен (1) CNI Europe Holding S.A. Rue ABBington L-1118 Luxembourg	Имен (1) CNI Europe Holding S.A. Rue ABBington L-1118 Luxembourg	
1.A.7	Имен (1) CNI Europe Holding S.A. Rue ABBington L-1118 Luxembourg	Имен (1) CNI Europe Holding S.A. Rue ABBington L-1118 Luxembourg	Имен (1) CNI Europe Holding S.A. Rue ABBington L-1118 Luxembourg	Имен (1) CNI Europe Holding S.A. Rue ABBington L-1118 Luxembourg	Имен (1) CNI Europe Holding S.A. Rue ABBington L-1118 Luxembourg	
1.A.9	Имен (1) CNI Europe Holding S.A. Rue ABBington L-1118 Luxembourg	Имен (1) CNI Europe Holding S.A. Rue ABBington L-1118 Luxembourg	Имен (1) CNI Europe Holding S.A. Rue ABBington L-1118 Luxembourg	Имен (1) CNI Europe Holding S.A. Rue ABBington L-1118 Luxembourg	Имен (1) CNI Europe Holding S.A. Rue ABBington L-1118 Luxembourg	
1.A.10	Имен (1) CNI Europe Holding S.A. Rue ABBington L-1118 Luxembourg	Имен (1) CNI Europe Holding S.A. Rue ABBington L-1118 Luxembourg	Имен (1) CNI Europe Holding S.A. Rue ABBington L-1118 Luxembourg	Имен (1) CNI Europe Holding S.A. Rue ABBington L-1118 Luxembourg	Имен (1) CNI Europe Holding S.A. Rue ABBington L-1118 Luxembourg	
1.B.1	Имен (1) CNI Europe Holding S.A. Rue ABBington L-1118 Luxembourg	Имен (1) CNI Europe Holding S.A. Rue ABBington L-1118 Luxembourg	Имен (1) CNI Europe Holding S.A. Rue ABBington L-1118 Luxembourg	Имен (1) CNI Europe Holding S.A. Rue ABBington L-1118 Luxembourg	Имен (1) CNI Europe Holding S.A. Rue ABBington L-1118 Luxembourg	Имен (1) CNI Europe Holding S.A. Rue ABBington L-1118 Luxembourg
1.B.2	Имен (1) CNI Europe Holding S.A. Rue ABBington L-1118 Luxembourg	Имен (1) CNI Europe Holding S.A. Rue ABBington L-1118 Luxembourg	Имен (1) CNI Europe Holding S.A. Rue ABBington L-1118 Luxembourg	Имен (1) CNI Europe Holding S.A. Rue ABBington L-1118 Luxembourg	Имен (1) CNI Europe Holding S.A. Rue ABBington L-1118 Luxembourg	Имен (1) CNI Europe Holding S.A. Rue ABBington L-1118 Luxembourg
1.B.3	Имен (1) CNI Europe Holding S.A. Rue ABBington L-1118 Luxembourg	Имен (1) CNI Europe Holding S.A. Rue ABBington L-1118 Luxembourg	Имен (1) CNI Europe Holding S.A. Rue ABBington L-1118 Luxembourg	Имен (1) CNI Europe Holding S.A. Rue ABBington L-1118 Luxembourg	Имен (1) CNI Europe Holding S.A. Rue ABBington L-1118 Luxembourg	Имен (1) CNI Europe Holding S.A. Rue ABBington L-1118 Luxembourg
1.B.4	Имен (1) CNI Europe Holding S.A. Rue ABBington L-1118 Luxembourg	Имен (1) CNI Europe Holding S.A. Rue ABBington L-1118 Luxembourg	Имен (1) CNI Europe Holding S.A. Rue ABBington L-1118 Luxembourg	Имен (1) CNI Europe Holding S.A. Rue ABBington L-1118 Luxembourg	Имен (1) CNI Europe Holding S.A. Rue ABBington L-1118 Luxembourg	Имен (1) CNI Europe Holding S.A. Rue ABBington L-1118 Luxembourg
1.B.7	Имен (1) CNI Europe Holding S.A. Rue ABBington L-1118 Luxembourg	Имен (1) CNI Europe Holding S.A. Rue ABBington L-1118 Luxembourg	Имен (1) CNI Europe Holding S.A. Rue ABBington L-1118 Luxembourg	Имен (1) CNI Europe Holding S.A. Rue ABBington L-1118 Luxembourg	Имен (1) CNI Europe Holding S.A. Rue ABBington L-1118 Luxembourg	Имен (1) CNI Europe Holding S.A. Rue ABBington L-1118 Luxembourg
1.B.9	Имен (1) CNI Europe Holding S.A. Rue ABBington L-1118 Luxembourg	Имен (1) CNI Europe Holding S.A. Rue ABBington L-1118 Luxembourg	Имен (1) CNI Europe Holding S.A. Rue ABBington L-1118 Luxembourg	Имен (1) CNI Europe Holding S.A. Rue ABBington L-1118 Luxembourg	Имен (1) CNI Europe Holding S.A. Rue ABBington L-1118 Luxembourg	Имен (1) CNI Europe Holding S.A. Rue ABBington L-1118 Luxembourg
1.B.10	Имен (1) CNI Europe Holding S.A. Rue ABBington L-1118 Luxembourg	Имен (1) CNI Europe Holding S.A. Rue ABBington L-1118 Luxembourg	Имен (1) CNI Europe Holding S.A. Rue ABBington L-1118 Luxembourg	Имен (1) CNI Europe Holding S.A. Rue ABBington L-1118 Luxembourg	Имен (1) CNI Europe Holding S.A. Rue ABBington L-1118 Luxembourg	Имен (1) CNI Europe Holding S.A. Rue ABBington L-1118 Luxembourg

Here above is provided copy of the "EC" Declaration of Conformity (EC Declaration of Conformity acc to 2006/42/EC).
 The EC Declaration of Conformity is the manufacturer's declaration about equipment compliance to relevant EU provisions.
 Please keep the original document in a safe place. Local authorities may require you to show this document in order to assure compliance of your equipment.
 Translation of this declaration in your own county language is provided on the original document.

SECTION 1 - GENERAL INFORMATION & SAFETY

For your better and easier understanding of the document you'll find original text reproduced hereafter together with some notes.

Clause of 2006/42/EC Annex II	EN EC Declaration of conformity According to Directive 2006/42/EC
1.A.1	We, (1)
1.A.2	Represented by Giuseppe Gavioli, CNH Europe Holding S.A. 13, Rue Aldringen L-1118 Luxembourg
1.A.3	declare under our sole responsibility, that the product: Agricultural tractor Trade Name : (2) Model : (3) Type : (4) Serial Number : (5)
1.A.4	to which this declaration relates, fulfils all the relevant provisions of the Directive 2006/42/EC, amended by (6).
1.A.7	For the relevant implementation of the provisions of the Directive, the following (harmonised) standards have been applied : ISO 26322 -1 part 1 or 2 Other standards : see Operators Manual
1.A.9	Place and date of the declaration : (7)
1.A.10	Name and signature of the authorised person : (8)

HEALTH AND SAFETY RELATED STANDARDS APPLIED TO YOUR TRACTOR

- ROPS PROTECTION is certified according to **EN 15694**.
- NOISE EMISSION LEVELS are rated according to **77/311/EEC**.
- VIBRATION LEVELS are rated according to **78/764/EEC**.

NOTE: See safety section 1 in this manual for further explanation and details on above mentioned standards and specific terminology.

SECTION 1 - GENERAL INFORMATION & SAFETY

METRIC AND IMPERIAL UNITS ABBREVIATIONS

TYPICAL APPLICATIONS	RECOMMENDED SI (METRIC) UNITS		IMPERIAL UNIT	
	NAME	SYMBOL	NAME	SYMBOL
AREA				
LAND area	hectare	ha	acre	
	square meter	m ²	square foot	ft ²
	square millimetre	mm ²	square inch	in ²
	square millimetre	mm ²	square inch	in ²
ELECTRICITY				
	ampere	A	ampere	A
	volt	V	volt	V
	microfarad	μF	microfarad	μF
	ohm	Ω	ohm	Ω
FORCE				
	kilonewton	kN	pound	lb
	newton	N	pound	lb
FORCE PER LENGTH				
	newton per metre	N/m	pound per inch	lb/in
FREQUENCY				
	megahertz	MHz	Megahertz	MHz
	kilohertz	kHz	kilohertz	kHz
	hertz	Hz	hertz	Hz
FREQUENCY - ROTATIONAL				
	revolution per minute	r/min rpm	revolution per minute	r/min (a) rpm
LENGTH				
	kilometre	km	mile	mi
	meter	m	foot	ft
	centimetre	cm	inch	in
	millimetre	mm	inch	in
	micrometer	μm		
MASS				
	kilogram	kg	pound	lb
	gram	g	ounce	oz
	milligram	mg		

SECTION 1 - GENERAL INFORMATION & SAFETY

TYPICAL APPLICATIONS	RECOMMENDED SI (METRIC) UNITS		IMPERIAL UNIT	
	NAME	SYMBOL	NAME	SYMBOL
POWER				
	kilowatt watt	kW W	horsepower Btu per hour Btu per minute	Hp Btu/hr Btu/min
PRESSURE or STRESS (FORCE PER AREA)				
	kilopascal pascal megapascal	kPa Pa Mpa	pound per square inch inch of mercury inch of water pound per square inch	psi inHg inH ₂ O psi
TEMPERATURE (other than THERMODYNAMIC)				
	degrees Celsius	°C	degrees Fahrenheit	°F
TIME				
	hour minute second	h min s	hour minute second	h min s
TORQUE (includes BENDING MOMENT, MOMENT OF FORCE, and MOMENT OF A COUPLE)				
	newton meter	Nm Nm	pound foot pound inch	lb ft lb in
VELOCITY				
	kilometre per hour meter per second millimetre per second meter per minute	km/h m/s mm/s m/min	mile per hour foot per second inch per second foot per minute	mph ft/s in/s ft/min
VOLUME (includes CAPACITY)				
	cubic metre litre litre millilitre	m ³ l l ml	cubic yard cubic inch US gallon UK gallon US quart UK quart fluid ounce	yd ³ cu yd in ³ US gal UK gal US qt UK qt fl oz

SECTION 1 - GENERAL INFORMATION & SAFETY

TYPICAL APPLICATIONS	RECOMMENDED SI (METRIC) UNITS		IMPERIAL UNIT	
	NAME	SYMBOL	NAME	SYMBOL
VOLUME PER TIME (includes DISCHARGE and FLOW RATE)				
	cubic meter per minute	m ³ /min	cubic foot per minute	ft ³ /min
	litre per minute	l/min	US gallon per minute	US gal/min
	millilitre per minute	ml/min	UK gallon per minute	UK gal/min
SOUND POWER LEVEL and SOUND PRESSURE LEVEL				
	decibel	dB	decibel	dB

SECTION 1

GENERAL INFORMATION AND SAFETY

TO THE OWNER

GENERAL

This Manual has been prepared to assist you in the correct procedure for running-in, driving and operating and for the maintenance of your new tractor. Your tractor, which was designed to power and propel itself, is intended for use in normal and customary agricultural applications.

Read this Manual carefully and keep it in a convenient place for future references. If at any time you require advice concerning your tractor, do not hesitate to contact your Authorised Dealer. He has company trained personnel, genuine manufacturers' parts and the necessary equipment to carry out all your service requirements.

Your tractor has been designed and built to give maximum performance, economy and ease of operation under a wide variety of operating conditions. Prior to delivery, the tractor was carefully inspected, both at the factory and by your dealer to ensure that it reaches you in optimum condition. To maintain this condition and trouble-free operation, it is important that the routine services, as specified in Section 4 of this manual, are carried out at the recommended intervals.

CLEANING THE TRACTOR

When cleaning the tractor, particularly if using a high pressure washing machine, precaution has to be taken to safeguard electrical / electronic components and connections. The pressure generated by some of these machines is such that complete protection against water ingress cannot be guaranteed.

While washing the tractor, using a high pressure washing machine, do not stand too close to the tractor and avoid directing the jet at electrical connections, breathers, seals, filler caps, etc. Never direct a cold water jet at a hot engine or exhaust.

SAFETY

Pages 5 to 9 include the list of precautions to be observed to ensure your safety and the safety of others. Read the safety precautions and follow the advice offered **before** operating the tractor.

SERVICE PARTS

It should be pointed out that genuine parts have been examined and approved by the company. The installation and/or usage of 'non-genuine' products could have negative effects upon the design characteristics of your tractor and thereby affect its safety. The Company is not liable for any damage caused by the use of '**non-genuine**' parts and accessories.

Only Genuine Case IH replacement parts should be used. The use of non-genuine parts may invalidate legal approvals associated with this product.

It is prohibited to carry out any modifications to the tractor unless specifically authorised, in writing, by the After Sales Service department of the Company.

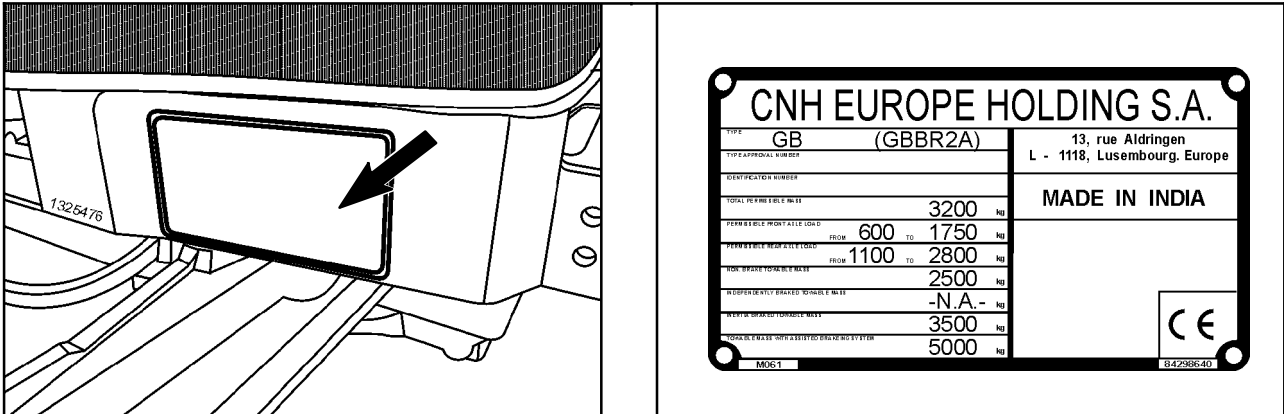
WARRANTY

Your tractor is warranted according to the current legislation in our country and with contractual agreements reached with the dealer at the time of sale. However, the warranty is no longer valid if the rules and instructions for the use and maintenance of the tractor described in this manual are not observed.

PRODUCT IDENTIFICATION

Tractor Identification Decal - Figure 1

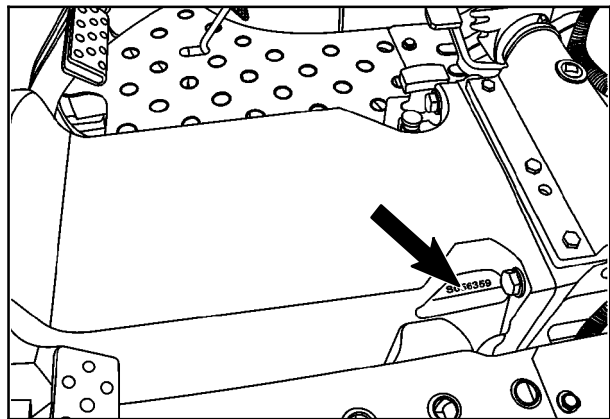
Underside of Hood :



1

Tractor Identification Location (stamped) - Figure 2 (Front right side on frame)

The tractor serial number, unit code and engine number are stamped on the top of the clutch housing. These numbers are also repeated on the vehicle identification decal reproduced above.

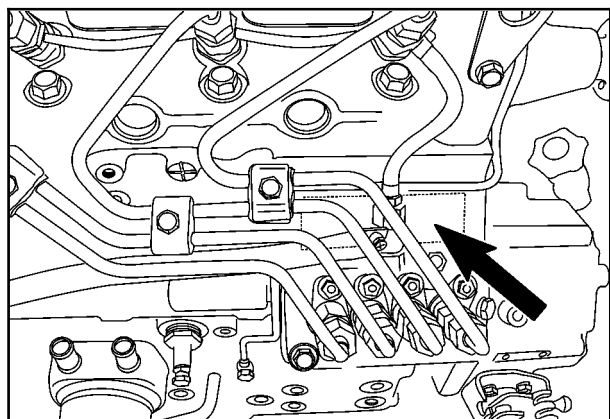


2

Engine Identification - Fig. 3

The engine serial number stamped on right side of the engine cylinder block. This number is repeated on tractor identification decal and also stamped on clutch box. Record the engine Serial No. below for quick reference.

Engine Serial No. _____



3

Buy Now



Our support email:

ebooklibonline@outlook.com