

# ORIGINAL INSTRUCTIONS

- according to Directives 2006/42/EC, Annex I 1.7.4.1

## **Quantum 75F** **Quantum 85F** **Quantum 95F** Tractors

## OPERATOR'S MANUAL

**Part Number 84340005**

1st edition English  
October 2010



# **SECTION SUMMARY**

**1 - Introduction and safety measures**

**2 - Controls, Instruments and Operation**

**3 - Field Operation**

**4 - Lubrication and Maintenance**

**5 - Troubleshooting**

**6 - Vehicle storage**

**7 - Accessories**

**8 - Specifications and Data**

**9 - Alphabetical Index**

# CE DECLARATION OF CONFORMITY DOCUMENT

Class of 2006/42/EC Annex II	BG Декларация за съответствие съгласно Директива 2006/42/ЕО	CE Prohlášení o shodě ES Podle směrnice 2006/42/ES	DA EU-erklæring om overensstemmelse i henhold til direktivet 2006/42/EF	DE EG-Konformitätsklärung Laut Richtlinie 2006/42/EG	EL Απόφαση Έπισημότητας ΕΚ Σύμφωνα με την Οδηγία 2006/42/ΕΚ
1.A.1	Ним [1]	№ [1]	№ [1]	№ [1]	№ [1]
1.A.2	Продукт произведен от Giuseppe Gavio, CNH Europe Holding S.A., 13, Rue Aldringen, L-1118 Luxembourg	Заявление от Giuseppe Gavio, CNH Europe Holding S.A., 13, Rue Aldringen, L-1118 Luxembourg	repræsenteret af Giuseppe Gavio, CNH Europe Holding S.A., 13, Rue Aldringen, L-1118 Luxembourg	verfertigt durch Giuseppe Gavio, CNH Europe Holding S.A., 13, Rue Aldringen, L-1118 Luxembourg	επισημοποιημένο от Giuseppe Gavio, CNH Europe Holding S.A., 13, Rue Aldringen, L-1118 Luxembourg
1.A.3	Декларация производителю ответствен за продукция: Секторският тректор Типове номер [2] Модел [3] Тип [4] Серия номер [5]	Производител на изделия отговорен за: Земеделия трактор Общодомашен [2] Модел [3] Тип [4] Серия номер [5]	Landbrugstraktor Håndarbejdsmaskine [2] Model [3] Type [4] Serienummer [5]	erbaut als: Landwirtschaftliche Zugmaschine Handhabsvorgang [2] Modell [3] Typ [4] Serienummer [5]	Επισημοποιημένο от Giuseppe Gavio, CNH Europe Holding S.A., 13, Rue Aldringen, L-1118 Luxembourg
1.A.4	За всеки от моите изделия декларацията е събранието изготвена на Директива 2006/42/ЕО, променена [6].	Prohlášení implementované ustanovení této Směrnice byly aplikovány následující harmonizované normy: • ISO 26322-1 část 1 a část 2 • ISO 26322-1 část 1 a část 2 • Další normy se týkají požadavků a účelů.	For alle de mine produkter erklæringens gyldighed er sikret ved at anvende følgende harmoniserede normer: • ISO 26322-1 del 1 og del 2 • Andre standarder i henhold til produktets og anvendelsesområderne.	Bei allen meinen Maschinen ist die Richtlinie 2006/42/EG entsprechend abgedeckt durch: [6].	За всички от моите изделия декларацията е събранието изготвена на Директива 2006/42/ЕО, променена [6].
1.A.7	За прилагането на изискванията на Директива 2006/42/ЕО са приложени следните хармонизирани стандарти: • ISO 26322-1 част 1 и част 2 • Други стандарти, които прилагаме за употреба.	Prohlášení implementované ustanovení této Směrnice byly aplikovány následující harmonizované normy: • ISO 26322-1 část 1 a část 2 • Další normy se týkají požadavků a účelů.	For alle de mine produkter erklæringens gyldighed er sikret ved at anvende følgende harmoniserede normer: • ISO 26322-1 del 1 og del 2 • Andre standarder i henhold til produktets og anvendelsesområderne.	Zur sicheren Umsetzung der Festlegungen in der Richtlinie werden folgende Harmonisierte Normen herangezogen: • ISO 26322-1 Teil 1 und 2 • Andere Normen stellen die in Gebrauch- und Wartungserklärung.	За всички от моите изделия декларацията е събранието изготвена на Директива 2006/42/ЕО, променена [6].
1.A.9	Място и дата на декларацията [7]	Място и дата на провъзгласяването [7]	Sted og dato for erklæringen [7]	Ort und Datum der Erklärung [7]	Όπου και όπου [7]
1.A.10	Име и подпис на упълномощено лице [8]	Име и подпис провъзгласяващия [8]	Bemyndigede navn og underskrift [8]	Name und Unterschrift des Befugten [8]	Όπου και όπου [7] или ελεγχόμενου αρμοδίου [8]
1.A.1	№ [1]	№ [1]	№ [1]	№ [1]	№ [1]
1.A.2	Represented by Giuseppe Gavio, CNH Europe Holding S.A., 13, Rue Aldringen, L-1118 Luxembourg	representados por Giuseppe Gavio, CNH Europe Holding S.A., 13, Rue Aldringen, L-1118 Luxembourg	Erklæret af Giuseppe Gavio, CNH Europe Holding S.A., 13, Rue Aldringen, L-1118 Luxembourg	erklæret af Giuseppe Gavio, CNH Europe Holding S.A., 13, Rue Aldringen, L-1118 Luxembourg	representados por Giuseppe Gavio, CNH Europe Holding S.A., 13, Rue Aldringen, L-1118 Luxembourg
1.A.3	declares under its sole responsibility, that the product: Agricultural tractor Trade Name [2] Model [3] Type [4] Serial Number [5]	declaramos, bajo nuestra exclusiva responsabilidad, que el producto: Tractor agrícola Descripción comercial [2] Modelo [3] Tipo [4] Número de serie [5]	Klæber under sit ene ansvar, at produktet: Landbrugstraktor Handelsnavn [2] Model [3] Type [4] Serienummer [5]	erklærer om sin ene ansvar, at produktet: Landwirtschaftliche Zugmaschine Handelsbezeichnung [2] Modell [3] Typ [4] Serienummer [5]	declaramos, bajo nuestra exclusiva responsabilidad, que el producto: Tractor agrícola Descripción comercial [2] Modelo [3] Tipo [4] Número de serie [5]
1.A.4	to which this declaration refers, refers to the relevant provisions of the Directive 2006/42/EC, amended by [6].	al cual se refiere la presente declaración, y a las disposiciones pertinentes de la Directiva 2006/42/CE, modificada por [6].	til hvilke kendte deklarationer referer, henviser til de relevante dele af direktivet 2006/42/EF og til de ændringer [6].	til hvilke kendte deklarationer referer, henviser til de relevante dele af direktivet 2006/42/EF og til de ændringer [6].	la quale si riferisce la presente dichiarazione, e alle disposizioni pertinenti della Direttiva 2006/42/CE, modificata per [6].
1.A.7	For the relevant implementation of the provisions of the Directive, the following (harmonized) standards have been applied: • ISO 26322-1 part 1 and 2 • Other standards see Operator Manual.	Para la relevante implementación de las disposiciones pertinentes de la Directiva se han aplicado las siguientes normas armonizadas: • ISO 26322-1 parte 1 y 2 • Otras normas véase el Manual de Uso y Mantenimiento.	Deklarationen refererer til bestemte dele af direktivet (harmoniserede standarder): • ISO 26322-1 del 1 og del 2 • Andre standarder i henhold til produktets og anvendelsesområderne.	Deklarationen refererer til bestemte dele af direktivet (harmoniserede standarder): • ISO 26322-1 del 1 og del 2 • Andre standarder i henhold til produktets og anvendelsesområderne.	Pour mettre en œuvre les dispositions de la Directive, on a appliqué les normes suivantes (normes harmonisées): • EN 26322-1 partie 1 et 2 • Autres normes voir Manuel d'Utilisation et d'Entretien.
1.A.9	Place and date of the declaration [7]	Lugar y fecha de la declaración [7]	Sted og dato for erklæringen [7]	Ort und Datum der Erklärung [7]	Lieu et date de la déclaration [7]
1.A.10	Name and signature of the authorized person [8]	Nombre y firma de la persona autorizada [8]	Navn og underskrift af den bemyndigede [8]	Navn und Unterschrift des Befugten [8]	Nome e firma della persona autorizzata [8]
1.A.1	№ [1]	№ [1]	№ [1]	№ [1]	№ [1]
1.A.2	Alkalmazott Giuseppe Gavio, CNH Europe Holding S.A., 13, Rue Aldringen, L-1118 Luxembourg	Representados da Giuseppe Gavio, CNH Europe Holding S.A., 13, Rue Aldringen, L-1118 Luxembourg	Attestert af Giuseppe Gavio, CNH Europe Holding S.A., 13, Rue Aldringen, L-1118 Luxembourg	Giuseppe Gavio, CNH Europe Holding S.A., 13, Rue Aldringen, L-1118 Luxembourg	representert av Giuseppe Gavio, CNH Europe Holding S.A., 13, Rue Aldringen, L-1118 Luxembourg
1.A.3	изъявляю под своей исключительной ответственностью, что продукция: Земеделия трактор Коммерчески наименования [2] Модел [3] Тип [4] Серия номер [5]	declaramos, bajo nuestra exclusiva responsabilidad, que el producto: Tractor agrícola Descripción comercial [2] Modelo [3] Tipo [4] Número de serie [5]	Zeker under sit alene ansvar, at produktet: Landbrugstraktor Handelsnavn [2] Model [3] Type [4] Serienummer [5]	erklærer om sin ene ansvar, at produktet: Landwirtschaftliche Zugmaschine Handelsbezeichnung [2] Modell [3] Typ [4] Serienummer [5]	declaramos, bajo nuestra exclusiva responsabilidad, que el producto: Tractor agrícola Descripción comercial [2] Modelo [3] Tipo [4] Número de serie [5]
1.A.4	to which this declaration refers, refers to the relevant provisions of the Directive 2006/42/EC, amended by [6].	al qual se refere a presente declaração, e as disposições pertinentes da Diretiva 2006/42/CE, modificada por [6].	til hvilke kendte deklarationer referer, henviser til de relevante dele af direktivet 2006/42/EF og til de ændringer [6].	til hvilke kendte deklarationer referer, henviser til de relevante dele af direktivet 2006/42/EF og til de ændringer [6].	la quale si riferisce la presente dichiarazione, e alle disposizioni pertinenti della Direttiva 2006/42/CE, modificata per [6].
1.A.7	For the relevant implementation of the provisions of the Directive, the following (harmonized) standards have been applied: • ISO 26322-1 part 1 and 2 • Other standards see Operator Manual.	Para la relevante implementación de las disposiciones pertinentes de la Directiva se han aplicado las siguientes normas armonizadas: • ISO 26322-1 parte 1 y 2 • Otras normas véase el Manual de Uso y Mantenimiento.	Deklarationen refererer til bestemte dele af direktivet (harmoniserede standarder): • ISO 26322-1 del 1 og del 2 • Andre standarder i henhold til produktets og anvendelsesområderne.	Deklarationen refererer til bestemte dele af direktivet (harmoniserede standarder): • ISO 26322-1 del 1 og del 2 • Andre standarder i henhold til produktets og anvendelsesområderne.	Pour mettre en œuvre les dispositions de la Directive, on a appliqué les normes suivantes (normes harmonisées): • EN 26322-1 partie 1 et 2 • Autres normes voir Manuel d'Utilisation et d'Entretien.
1.A.9	Place and date of the declaration [7]	Lugar y fecha de la declaración [7]	Sted og dato for erklæringen [7]	Ort und Datum der Erklärung [7]	Lieu et date de la déclaration [7]
1.A.10	Name and signature of the authorized person [8]	Nombre y firma de la persona autorizada [8]	Navn og underskrift af den bemyndigede [8]	Name und Unterschrift des Befugten [8]	Nome e firma della persona autorizzata [8]
1.A.1	№ [1]	№ [1]	№ [1]	№ [1]	№ [1]
1.A.2	representados por Giuseppe Gavio, CNH Europe Holding S.A., 13, Rue Aldringen, L-1118 Luxembourg	representados por Giuseppe Gavio, CNH Europe Holding S.A., 13, Rue Aldringen, L-1118 Luxembourg	Zygodstved af Giuseppe Gavio, CNH Europe Holding S.A., 13, Rue Aldringen, L-1118 Luxembourg	Erklæret af Giuseppe Gavio, CNH Europe Holding S.A., 13, Rue Aldringen, L-1118 Luxembourg	Giuseppe Gavio, CNH Europe Holding S.A., 13, Rue Aldringen, L-1118 Luxembourg
1.A.3	declaramos, bajo nuestra exclusiva responsabilidad, que el producto: Tractor agrícola Descripción comercial [2] Modelo [3] Tipo [4] Número de serie [5]	declaramos, bajo nuestra exclusiva responsabilidad, que el producto: Tractor agrícola Descripción comercial [2] Modelo [3] Tipo [4] Número de serie [5]	erklærer om sin ene ansvar, at produktet: Landbrugstraktor Handelsnavn [2] Model [3] Type [4] Serienummer [5]	erklærer om sin ene ansvar, at produktet: Landwirtschaftliche Zugmaschine Handelsbezeichnung [2] Modell [3] Typ [4] Serienummer [5]	declaramos, bajo nuestra exclusiva responsabilidad, que el producto: Tractor agrícola Descripción comercial [2] Modelo [3] Tipo [4] Número de serie [5]
1.A.4	to which this declaration refers, refers to the relevant provisions of the Directive 2006/42/EC, amended by [6].	al qual se refere a presente declaração, e as disposições pertinentes da Diretiva 2006/42/CE, modificada por [6].	til hvilke kendte deklarationer referer, henviser til de relevante dele af direktivet 2006/42/EF og til de ændringer [6].	til hvilke kendte deklarationer referer, henviser til de relevante dele af direktivet 2006/42/EF og til de ændringer [6].	la quale si riferisce la presente dichiarazione, e alle disposizioni pertinenti della Direttiva 2006/42/CE, modificata per [6].
1.A.7	For the relevant implementation of the provisions of the Directive, the following (harmonized) standards have been applied: • ISO 26322-1 part 1 and 2 • Other standards see Operator Manual.	Para la relevante implementación de las disposiciones pertinentes de la Directiva se han aplicado las siguientes normas armonizadas: • ISO 26322-1 parte 1 y 2 • Otras normas véase el Manual de Uso y Mantenimiento.	Deklarationen refererer til bestemte dele af direktivet (harmoniserede standarder): • ISO 26322-1 del 1 og del 2 • Andre standarder i henhold til produktets og anvendelsesområderne.	Deklarationen refererer til bestemte dele af direktivet (harmoniserede standarder): • ISO 26322-1 del 1 og del 2 • Andre standarder i henhold til produktets og anvendelsesområderne.	Pour mettre en œuvre les dispositions de la Directive, on a appliqué les normes suivantes (normes harmonisées): • EN 26322-1 partie 1 et 2 • Autres normes voir Manuel d'Utilisation et d'Entretien.
1.A.9	Place and date of the declaration [7]	Lugar y fecha de la declaración [7]	Sted og dato for erklæringen [7]	Ort und Datum der Erklärung [7]	Lieu et date de la déclaration [7]
1.A.10	Name and signature of the authorized person [8]	Nombre y firma de la persona autorizada [8]	Navn og underskrift af den bemyndigede [8]	Name und Unterschrift des Befugten [8]	Nome e firma della persona autorizzata [8]
1.A.1	№ [1]	№ [1]	№ [1]	№ [1]	№ [1]
1.A.2	representados por Giuseppe Gavio, CNH Europe Holding S.A., 13, Rue Aldringen, L-1118 Luxembourg	representados por Giuseppe Gavio, CNH Europe Holding S.A., 13, Rue Aldringen, L-1118 Luxembourg	Zygodstved af Giuseppe Gavio, CNH Europe Holding S.A., 13, Rue Aldringen, L-1118 Luxembourg	Erklæret af Giuseppe Gavio, CNH Europe Holding S.A., 13, Rue Aldringen, L-1118 Luxembourg	Giuseppe Gavio, CNH Europe Holding S.A., 13, Rue Aldringen, L-1118 Luxembourg
1.A.3	declaramos, bajo nuestra exclusiva responsabilidad, que el producto: Tractor agrícola Descripción comercial [2] Modelo [3] Tipo [4] Número de serie [5]	declaramos, bajo nuestra exclusiva responsabilidad, que el producto: Tractor agrícola Descripción comercial [2] Modelo [3] Tipo [4] Número de serie [5]	erklærer om sin ene ansvar, at produktet: Landbrugstraktor Handelsnavn [2] Model [3] Type [4] Serienummer [5]	erklærer om sin ene ansvar, at produktet: Landwirtschaftliche Zugmaschine Handelsbezeichnung [2] Modell [3] Typ [4] Serienummer [5]	declaramos, bajo nuestra exclusiva responsabilidad, que el producto: Tractor agrícola Descripción comercial [2] Modelo [3] Tipo [4] Número de serie [5]
1.A.4	to which this declaration refers, refers to the relevant provisions of the Directive 2006/42/EC, amended by [6].	al qual se refere a presente declaração, e as disposições pertinentes da Diretiva 2006/42/CE, modificada por [6].	til hvilke kendte deklarationer referer, henviser til de relevante dele af direktivet 2006/42/EF og til de ændringer [6].	til hvilke kendte deklarationer referer, henviser til de relevante dele af direktivet 2006/42/EF og til de ændringer [6].	la quale si riferisce la presente dichiarazione, e alle disposizioni pertinenti della Direttiva 2006/42/CE, modificata per [6].
1.A.7	For the relevant implementation of the provisions of the Directive, the following (harmonized) standards have been applied: • ISO 26322-1 part 1 and 2 • Other standards see Operator Manual.	Para la relevante implementación de las disposiciones pertinentes de la Directiva se han aplicado las siguientes normas armonizadas: • ISO 26322-1 parte 1 y 2 • Otras normas véase el Manual de Uso y Mantenimiento.	Deklarationen refererer til bestemte dele af direktivet (harmoniserede standarder): • ISO 26322-1 del 1 og del 2 • Andre standarder i henhold til produktets og anvendelsesområderne.	Deklarationen refererer til bestemte dele af direktivet (harmoniserede standarder): • ISO 26322-1 del 1 og del 2 • Andre standarder i henhold til produktets og anvendelsesområderne.	Pour mettre en œuvre les dispositions de la Directive, on a appliqué les normes suivantes (normes harmonisées): • EN 26322-1 partie 1 et 2 • Autres normes voir Manuel d'Utilisation et d'Entretien.
1.A.9	Place and date of the declaration [7]	Lugar y fecha de la declaración [7]	Sted og dato for erklæringen [7]	Ort und Datum der Erklärung [7]	Lieu et date de la déclaration [7]
1.A.10	Name and signature of the authorized person [8]	Nombre y firma de la persona autorizada [8]	Navn og underskrift af den bemyndigede [8]	Name und Unterschrift des Befugten [8]	Nome e firma della persona autorizzata [8]



Here above is provided copy of the “EC” Declaration of Conformity (EC Declaration of Conformity acc to 2006/42/EC).

The EC Declaration of Conformity is the manufacturer’s declaration about equipment compliance to relevant EU provisions.

Please keep the original document in a safe place. Local authorities may require you to show this document in order to assure compliance of your equipment.

Translation of this declaration in your own country language is provided on the original document

For your better and easier understanding of the document you'll find original text reproduced hereafter together with some notes

Clause of 2006/42/EC Annex II	<b>EN</b> <b>EC Declaration of conformity</b> <b>According to Directive 2006/42/EC.</b>
1.A.1	We, [1]
1.A.2	Represented by Giuseppe Gavioli, CNH Europe Holding S.A. 13, Rue Aldringen L-1118 Luxembourg
1.A.3	declare under our sole responsibility, that the product:  Agricultural tractor  Trade Name: [2]  Model: [3]  Type: [4]  Serial Number: [5]
1.A.4	to which this declaration relates, fulfils all the relevant provisions of the Directive 2006/42/EC, amended by [6].
1.A.7	For the relevant implementation of the provisions of the Directive, the following (harmonised) standards have been ap- plied:  • ISO 26322-1 part 1 or 2  Other standards: see Operators Manual
1.A.9	Place and date of the declaration: [7]
1.A.10	Name and signature of the authorised per- son: [8]

## HEALTH AND SAFETY RELATED STANDARDS APPLIED TO YOUR TRACTOR

- FOPS level on your tractor cab is certified according to **OECD Code 10**.
- ECO CAB is certified **Category 2** according to **EN 15695-1**.
- HVAC (Heating, ventilation Air Conditioning ) CAB is certified **Category 1** according to **EN 15695-1**.
- NOISE EMISSION LEVELS are rated according to **77/311/EEC**.
- VIBRATION LEVELS are rated according to **78/764/EEC**.
- ROPS PROTECTION is certified according to **EN 15694**.

**NOTE: See safety section 1 in this manual for further explanation and details on above mentioned standards and specific terminology.**

## METRIC AND IMPERIAL UNITS ABBREVIATIONS

TYPICAL APPLICATIONS	RECOMMENDED SI (METRIC) UNITS		IMPERIAL UNIT	
	NAME	SYMBOL	NAME	SYMBOL
<b>AREA</b>				
Land area	hectare	ha	acre	
	square meter	m <sup>2</sup>	square foot	ft <sup>2</sup>
	square millimetre	mm <sup>2</sup>	square inch	in <sup>2</sup>
	square millimetre	mm <sup>2</sup>	square inch	in <sup>2</sup>
<b>ELECTRICITY</b>				
	ampere	A	ampere	A
	volt	V	volt	V
	microfarad	μF	microfarad	μF
	ohm	Ω	ohm	Ω
<b>FORCE</b>				
	kilonewton	kN	pound	lb
	newton	N	pound	lb
<b>FORCE PER LENGTH</b>				
	newton per metre	N/m	pound per inch	lb/in
<b>FREQUENCY</b>				
	megahertz	MHz	Megahertz	MHz
	kilohertz	kHz	kilohertz	kHz
	hertz	Hz	hertz	Hz
<b>FREQUENCY - ROTATIONAL</b>				
	revolution per minute	r/min	revolution per minute	r/min <sup>(a)</sup>
		rpm		rpm
<b>LENGTH</b>				
	kilometre	km	mile	mi
	meter	m	foot	ft
	centimetre	cm	inch	in
	millimetre	mm	inch	in
	micrometer	μm		
<b>MASS</b>				
	kilogram	kg	pound	lb
	gram	g	ounce	oz
	milligram	mg		

TYPICAL APPLICATIONS	RECOMMENDED SI (METRIC) UNITS		IMPERIAL UNIT	
	NAME	SYMBOL	NAME	SYMBOL
<b>POWER</b>				
	kilowatt	kW	horsepower	Hp
	watt	W	Btu per hour Btu per minute	Btu/hr Btu/min
<b>PRESSURE or STRESS (FORCE PER AREA)</b>				
	kilopascal	kPa	pound per square inch inch of mercury	psi inHg
	pascal	Pa	inch of water	inH <sub>2</sub> O
	megapascal	Mpa	pound per square inch	psi
<b>TEMPERATURE (other than THERMODYNAMIC)</b>				
	degrees Celsius	°C	degrees Fahrenheit	°F
<b>TIME</b>				
	hour	h	hour	h
	minute	min	minute	min
	second	s	second	s
<b>TORQUE (includes BENDING MOMENT, MOMENT OF FORCE, and MOMENT OF A COUPLE)</b>				
	newton meter	N m N m	pound foot pound inch	lb ft lb in
<b>VELOCITY</b>				
	kilometre per hour	km/h	mile per hour	mph
	meter per second	m/s	foot per second	ft/s
	millimetre per second	mm/s	inch per second	in/s
	meter per minute	m/min	foot per minute	ft/min
<b>VOLUME (includes CAPACITY)</b>				
	cubic meter	m <sup>3</sup>	cubic yard	yd <sup>3</sup> cu yd
	litre	l	cubic inch	in <sup>3</sup>
	litre	l	US gallon UK gallon US quart UK quart	US gal UK gal US qt UK qt
	millilitre	ml	fluid ounce	fl oz

TYPICAL APPLICATIONS	RECOMMENDED SI (METRIC) UNITS		IMPERIAL UNIT	
	NAME	SYMBOL	NAME	SYMBOL
<b>VOLUME PER TIME (includes DISCHARGE and FLOW RATE)</b>				
	cubic meter per minute	m <sup>3</sup> /min	cubic foot per minute	ft <sup>3</sup> /min
	litre per minute	l/min	US gallon per minute	US gal/min
	millilitre per minute	ml/min	UK gallon per minute	UK gal/min
<b>SOUND POWER LEVEL and SOUND PRESSURE LEVEL</b>				
	decibel	dB	decibel	dB

---

# CONTENTS

## Section - Page

CE declaration of conformity document .....	1
Health and safety related standards applied to your tractor .....	2

### Section 1

General information and safety measures .....	1-1
Tractor identification plates .....	1-2
Important ecological considerations .....	1-5
Always work safely .....	1-6
Working safely .....	1-7
Tractor noise level information sheet .....	1-18
Tractor vibration level information sheet .....	1-19
Protection offered by the tractor .....	1-20
Machine stability .....	1-23
Fire or explosion prevention .....	1-26
Intended use of your tractor .....	1-27
Tractors main components .....	1-30

### Section 2

Analog control panel .....	2-2
Digital instrument control panel .....	2-7
Digital instrument indicator lights .....	2-9
Multifunction display .....	2-13
Lights/horn switch .....	2-32
Layout of controls .....	2-29
Electrohydraulic differential lock .....	2-35
Seat .....	2-38
Steering wheel adjustment .....	2-39
Cab .....	2-40
Mechanical transmission (16fwd+16rev) 18.64/24.85 mph (30/40 km/h) .....	2-51
Transmission with electrohydraulic shuttle (16fwd+16rev) 18.64/24.85 mph (30/40 km/h) .....	2-53
Mechanical transmission (28fwd+16rev) 18.64/24.85 mph (30/40 km/h) .....	2-55
Mechanical transmission and splitter 18.64/24.85 mph (30/40 km/h) (32fwd+16rev) .....	2-57
Electrohydraulic transmission 18.64/24.85 mph (30/40 km/h) (32fwd+16rev) .....	2-59
Electrohydraulically controlled clutch and transmission 18.64/24.85 mph (30/40 km/h) (32fwd+16rev) ..	2-61
Electrohydraulic transmission 18.64/24.85 mph (30/40 km/h) (44fwd+16rev) .....	2-64
Fast mechanical transmissions 24.85 mph (40 km/h) .....	2-67



---

## Section 3

Field operation .....	3-1
Starting and stopping .....	3-2
Brakes .....	3-6
Transmission clutch pedal .....	3-7
Electronically controlled electro-hydraulic four-wheel drive .....	3-8
Differential lock .....	3-9
Electrohydraulic differential lock .....	3-10
Power take-off .....	3-12
Independent power take-off .....	3-13
Power take-off synchronised .....	3-14
Hydraulic lift with mechanical control .....	3-17
Electronically controlled rear hydraulic lift .....	3-21
Implement linkage .....	3-28
Rear auxiliary remote control valves .....	3-35
Wheel track adjustment .....	3-41
Steering angle adjustment .....	3-44
Tyres .....	3-47
Tyre combinations .....	3-52
Tyre selection for four-wheel drive models .....	3-53
Ballast .....	3-57
Permitted maximum weights .....	3-58

## Section 4

Lubrication and maintenance .....	4-1
Running in period .....	4-2
Tractor refuelling .....	4-4
Access for inspection and maintenance .....	4-7
Lubrication and maintenance table .....	4-8
Flexible maintenance .....	4-10
Instrument panel warning lights .....	4-14
Every 10 hours of work .....	4-17
Every 50 hours of work .....	4-18
Every 100 hours of work .....	4-20
Every 200 hours .....	4-22
Every 300 hours of work .....	4-24
Every 500 hours of work .....	4-28
Every 600 hours of work .....	4-31
Every 1200 hours or every year .....	4-34

---

Every 1200 hours of work or every 2 years .....	4-35
Every 1500 hours of work .....	4-40
Every 1800 hours of work .....	4-40
Electrical system .....	4-41
Calibrations .....	4-59
Recommendations for bodywork maintenance .....	4-65
Tractor refuelling .....	4-66

## **Section 5**

Troubleshooting, causes and solutions .....	5-1
---	-----

## **Section 6**

Storing the tractor .....	6-1
---------------------------	-----

## **Section 7**

Quick fit implement linkage .....	7-2
Towing equipment .....	7-4
Side remote control valves .....	7-7
Control valve for trailer hydraulic brakes (not available on all markets) .....	7-9
Roll bar .....	7-11

## **Section 8**

Specifications and Data .....	8-1
-------------------------------	-----

## **Section 9**

Alphabetical index .....	9-1
--------------------------	-----

## SECTION 1

### INTRODUCTION AND SAFETY MEASURES

#### SPARE PARTS

“Non-original” spare parts have not been tested or authorised by the Manufacturer. Installment and/or use of such products may adversely affect the tractor’s design specifications, thereby compromising operational safety. The manufacturer cannot be held responsible for any damage resulting from the use of “non-original” spare parts.

No modifications may be made to the tractor without written authorisation from the Manufacturer.

#### WARRANTY

The tractor is guaranteed in accordance with current legislation in your country and in line with contractual agreements reached with the dealer at the time of sale. However, the warranty is no longer valid if the rules and instructions for the use and maintenance of the tractor, described in this Manual, are not observed.

#### CLEANING THE TRACTOR

Your tractor is an advanced machine, fitted with an electrohydraulic control system. Care must be taken when cleaning the tractor, especially if a pressurized water cleaner is used.

Never stand too close to the tractor or direct the water jet on electrical components, seals or intake openings, etc..

Never direct jets of cold water at the hot engine or exhaust. See also Section 3 (Recommendations for bodywork maintenance).

## TRACTOR IDENTIFICATION PLATES

Serial numbers identify the tractor and its main components. The identification data must be supplied by the dealer for requests for spare parts or service operations. Identification data is of fundamental importance in the event of theft of the tractor. The location of the various identification data is shown below.

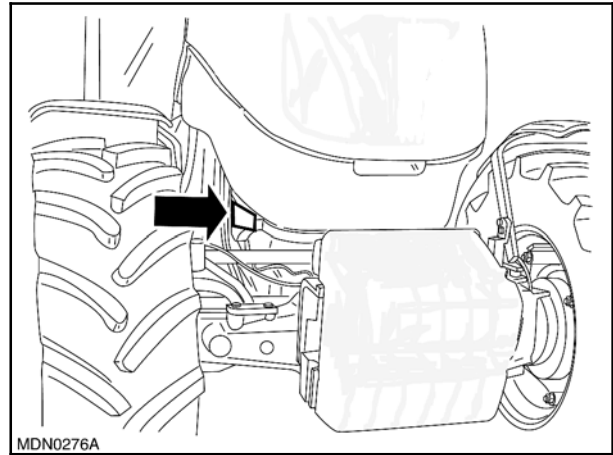
### TRACTOR CHASSIS FRAME IDENTIFICATION DATA PLATE - Fig. 1

The tractor chassis number is stamped above the front support on the right-hand side.

Indicate below the corresponding serial number.

No.

---



1

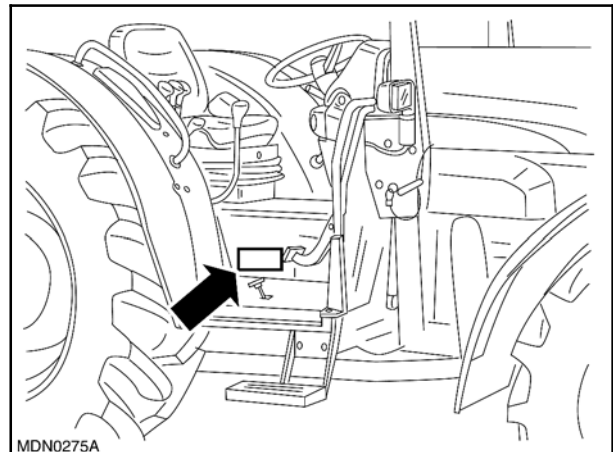
### TRACTOR TYPE-APPROVAL SUMMARY DATA PLATE FOR MODELS WITH ROLL BAR - Fig. 2

The plate is on the right-hand side.

Indicate below the corresponding serial number.

No.

---



2

### TRACTOR TYPE-APPROVAL SUMMARY DATA PLATE FOR MODELS WITH CAB (1)

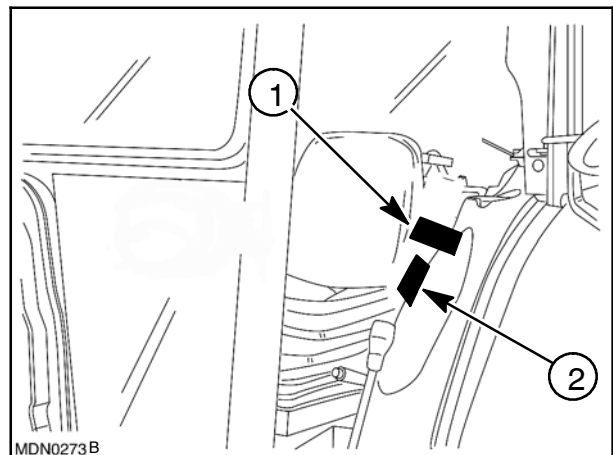
#### CAB IDENTIFICATION PLATE (2)

The plate is inside the cab on the left-hand side.

Indicate below the corresponding serial number.

No.

---



3

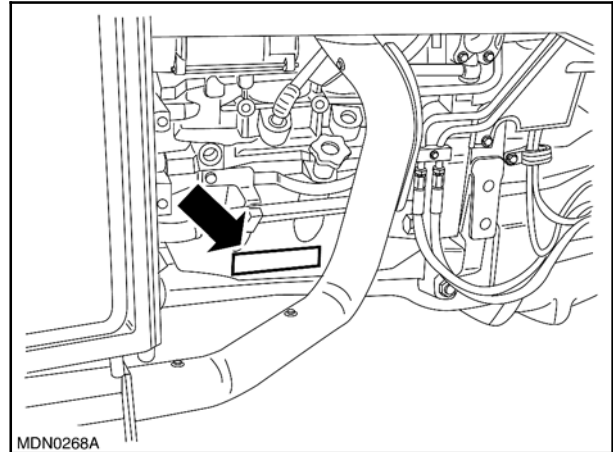
**ENGINE IDENTIFICATION DATA PLATE  
(MODEL 95F) - Fig. 4**

The plate with the engine data installed on the tractor is fitted on the right-hand side of the engine.

Indicate below the corresponding serial number.

No.

---



MDN0268A

4

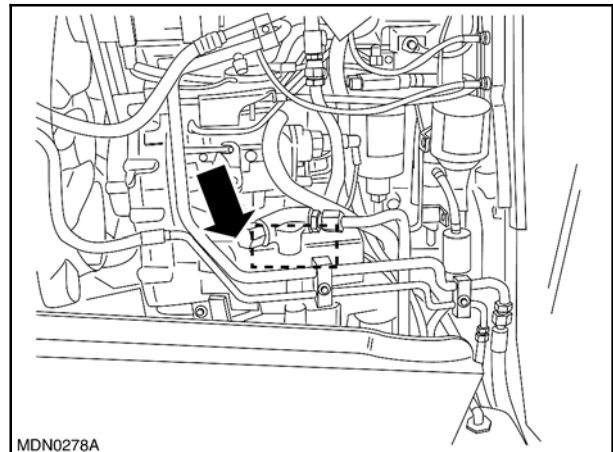
**ENGINE IDENTIFICATION DATA PLATE  
(MODELS 75F AND 85F) - Fig. 5**

The plate with the engine data installed on the tractor is fitted on the left-hand side of the engine near the hydraulic pumps.

Indicate below the corresponding serial number.

No.

---



MDN0278A

5

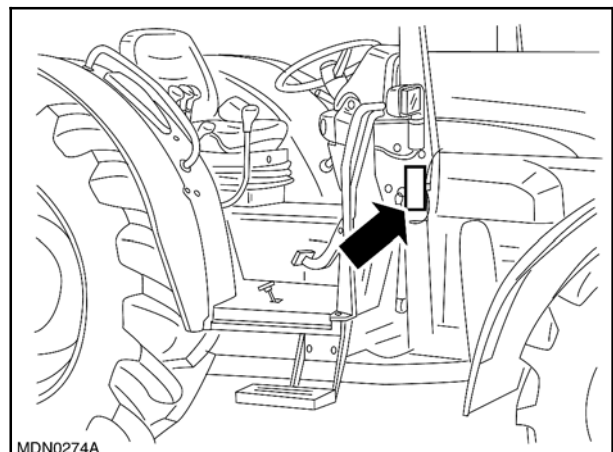
**ROLL BAR IDENTIFICATION PLATE - Fig. 6**

The plate is fitted on the right-hand side on the chassis frame.

Indicate below the corresponding serial number.

No.

---



MDN0274A

6

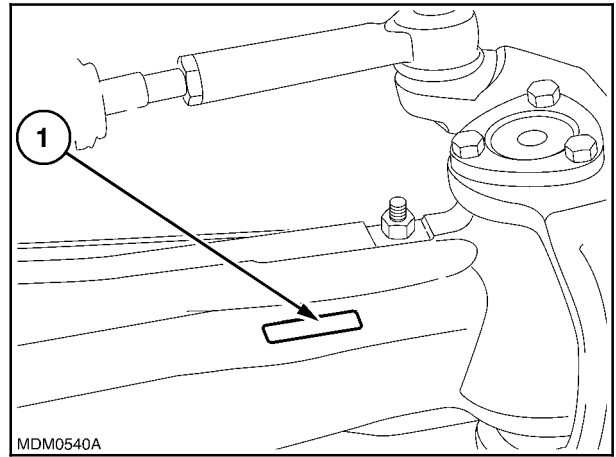
**FRONT AXLE IDENTIFICATION PLATE**  
**- Fig. 7**

The plate (1) is located on the right-hand side and gives the identification data for the axle fitted on the machine.

Indicate below the corresponding serial number.

No.

---



**Buy Now**



Our support email:

[ebooklibonline@outlook.com](mailto:ebooklibonline@outlook.com)