

ORIGINAL INSTRUCTIONS

# OPERATOR'S MANUAL

---

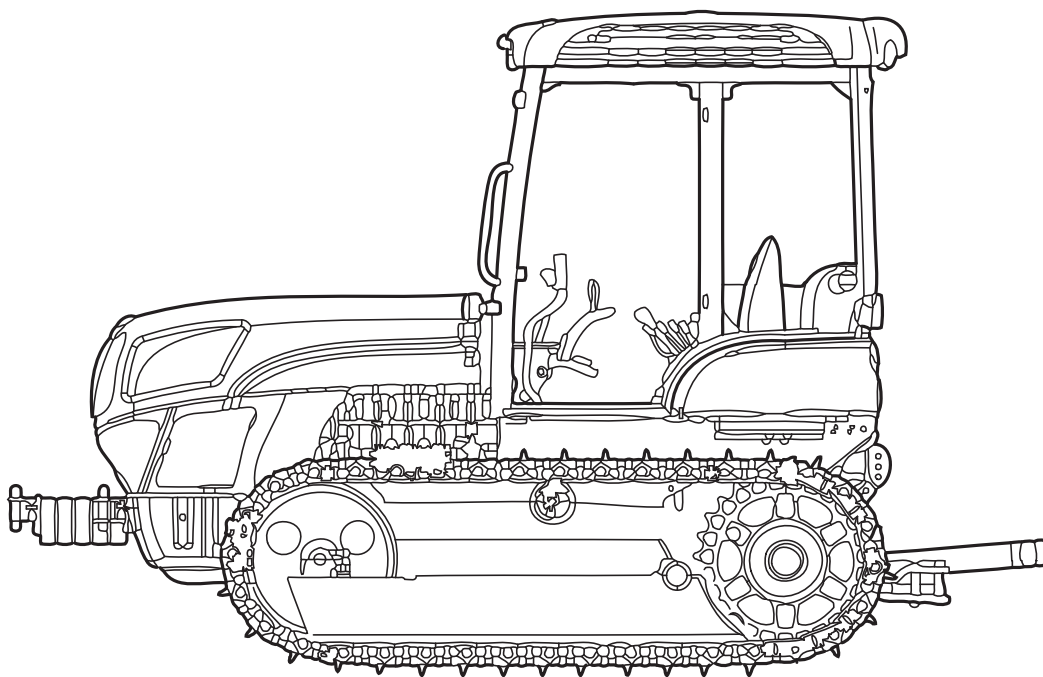
**TK4020**

**TK4030**

**TK4040**

**TK4050**

**TK4060**



**Part Number 84382203**

2nd edition English

October 2010



# TO THE OWNER

This manual contains information concerning the adjustment and maintenance of your New Holland TK4030V, TK4050, TK4050M, TK4060 Tractor. You have purchased a dependable machine, but only by proper care and operation can you expect to receive the performance and long service built into this tractor. Please have all operators read this manual carefully and keep it available for ready reference.

This machine was designed to power and propel itself. It is intended to load and move materials with a variety of buckets and forks. Allied attachments built and supplied by other manufacturers can be used on the tractor where recommended and approved by New Holland.

Your New Holland dealer will instruct you in the general operation of your tractor. (Refer to the "Delivery Report" at the back of this manual.) Your dealer's staff of factory-trained service technicians will be glad to answer any questions that may arise regarding the operation of your tractor.

Your New Holland dealer carries a complete line of genuine New Holland service parts. These parts are manufactured and carefully inspected to insure high quality and accurate fitting of any necessary replacement parts. Be prepared to give your dealer the model and PIN number of the engine and tractor, when ordering parts. Locate these numbers now and record them below. Refer to the "General Information" section of this manual for the location of the model and PIN numbers of your tractor.

Model \_\_\_\_\_ Engine Model \_\_\_\_\_

PIN Number \_\_\_\_\_ Engine Serial Number \_\_\_\_\_

# IMPROVEMENTS

CNH America LLC is continually striving to improve its products. We reserve the right to make improvements or changes when it becomes practical and possible to do so, without incurring any obligation to make changes or additions to the equipment sold previously.

**CALIFORNIA**

**Proposition 65 Warning**

Diesel engine exhaust and some of its constituents are known to the State of California to cause cancer, birth defects, and other reproductive harm.

Battery posts, terminals and related accessories contain lead and lead compounds. **Wash hands after handling.**

## Electromagnetic Interference (EMC)

Interference may arise as a result of add-on equipment which may not necessarily meet the required standards. As such interference can result in serious malfunction of the unit and/or create unsafe situations, you must observe the following:

- The maximum power of emission equipment (radio, telephones, etc.) must not exceed the limits imposed by the national authorities of the country where you use the machine.
- The electro-magnetic field generated by the add-on system should not exceed 24 V/m at any time and at any location in the proximity of electronic components.
- The add-on equipment must not interfere with the functioning of the on board electronics.

Failure to comply with these rules will render the [brand] warranty null and void.

---

# TABLE OF CONTENTS

Page

## Section 1 – Introduction and safety measures

Notices to users .....	1-1
Tractor identification .....	1-2
Important ecological considerations .....	1-4
Always work safely .....	1-5
Working safely .....	1-6
Safety decals .....	1-12
Tractor noise level information sheet .....	1-23
Tractor mains components .....	1-24

## Section 2 – General information, controls and instruments

General information, controls and instruments .....	2-1
Instrument panel .....	2-2
Controls and instruments .....	2-5
Seat adjustment .....	2-7
Cab .....	2-10
Transmission with range gear and shuttle (8F+8R) .....	2-21

## Section 3 – Field operation

Field operation .....	3-1
Operating instructions .....	3-2
Running-in procedure .....	3-5
Checks before using the tractor .....	3-5
Transporting the tractor .....	3-5
Steering clutches and brakes .....	3-6
Central clutch .....	3-7
Power take-off .....	3-8
Hydraulic lift .....	3-11
Implement linkage .....	3-15
Implement connection points .....	3-17
Towing equipment .....	3-18
Auxiliary remote control valves .....	3-21

---

## Section 4 – Lubrication and maintenance

Lubrication and maintenance .....	4-1
Introduction .....	4-1
Running in period .....	4-2
Tractor refuelling .....	4-3
Lubrication and maintenance table .....	4-6
Flexible maintenance .....	4-9
Instrument panel warning lights .....	4-14
Every 10 hours of work .....	4-16
Every 50 hours of work .....	4-17
Every 100 hours of work .....	4-18
Every 300 hours of work .....	4-20
Every 500 hours of work .....	4-23
Every 600 hours of work .....	4-26
Every 1200 hours of work or every year .....	4-29
Every 1200 hours of work or every 2 years .....	4-32
Every 1800 hours of work .....	4-35
Electrical system .....	4-36

## Section 5 – Troubleshooting

Engine .....	5-2
Electrical system .....	5-5
Hydraulic system .....	5-7
Hydraulic Power lift .....	5-8

## Section 6 – Vehicle storage

## Section 7 – Accessories

Quick fit implement linkage .....	7-2
Cross member with attachment holes .....	7-4
Ballast .....	7-4

## Section 8 – Specifications

## Section 9 – Alphabetical Index

# SECTION 1

## GENERAL INFORMATION AND SAFETY

### GENERAL GUIDELINES

This Use and Maintenance Manual provides a guide for the user with regard to running-in, use and maintenance of the tractor.

Read this manual carefully and keep in a convenient place for future reference.

Do not hesitate to contact your local dealer for any queries concerning your tractor.

The dealer can provide skilled personnel, trained by the manufacturer, original service parts and all tools and equipment necessary for your service requirements.

The tractor is designed as a power generator and drive-propulsion unit for use in normal and traditional agricultural conditions.

The tractor is also designed to provide maximum performance, economic running and easy use over a wide range of operations.

Prior to delivery, all machines are carefully inspected (by both the Manufacturer and your local authorised dealer), to make sure that they reach the user in perfect condition.

To maintain the tractor in this condition and ensure trouble-free operation, the routine maintenance described in Section 4 of this manual must be carried out at the specified intervals.

### CLEANING THE TRACTOR

- Never stand too close to the tractor or direct the water jet on electrical components, seals or intake openings, etc.
- Never direct jets of cold water at the hot engine or exhaust. See also Section 3 (Recommendations for bodywork maintenance).

### SAFETY

Safety precautions for the operator and bystanders are shown on page vii to xii inclusive. Read the safety instructions and follow recommendations and hints **before** starting to use the tractor.

### FIRST 50 – HOUR SERVICE

The operations required for the first service are shown at the end of the Manual, immediately prior to the index.

After the first 50 hours of use, return to the dealer with your tractor and this Manual in order to carry out the Manufacturer's checks and to fill in the certificates included on pages 1 and 3). The first sheet (page 1) must be compiled on completion of the service and held by the dealer.

The second sheet (page 3) must be kept in the Manual for documentation and reference purposes. **Check that both copies are signed by both yourself and the dealer.**

### SERVICE PARTS

"Non-original" spare parts have not been tested or authorised by the Manufacturer.

Installment and/or use of such products may adversely affect the tractor's design specifications, thereby compromising operational safety.

The manufacturer cannot be held responsible for any damage resulting from the use of "non-original" spare parts.

No modifications may be made to the tractor without written authorisation from the Manufacturer.

### WARRANTY

The tractor is guaranteed in accordance with current legislation in your country and in line with contractual agreements reached with the dealer at the time of sale.

However, the warranty is no longer valid if the rules and instructions for the use and maintenance of the tractor, described in this Manual, are not observed.

---

 **WARNING** 

---

**The engine and the fuel circuit have been designed to satisfy current regulations on the emissions standards for pollutants. Tampering by the dealer, end customer or machine operator is strictly forbidden. Failure to comply with this rule could give rise to fines, reconditioning costs and invalidation of warranty as well as any legal action and confiscation of the vehicle until its original factory conditions are restored. Restoring the engine to its natural state may only be done by certified/authorized technical personnel.**

---

## TRACTOR IDENTIFICATION

Serial numbers identify the tractor and its main components. The identification data must be supplied by the dealer for requests for spare parts or service operations. Identification data is of fundamental importance in the event of theft of the tractor. The location of the various identification data is shown below.

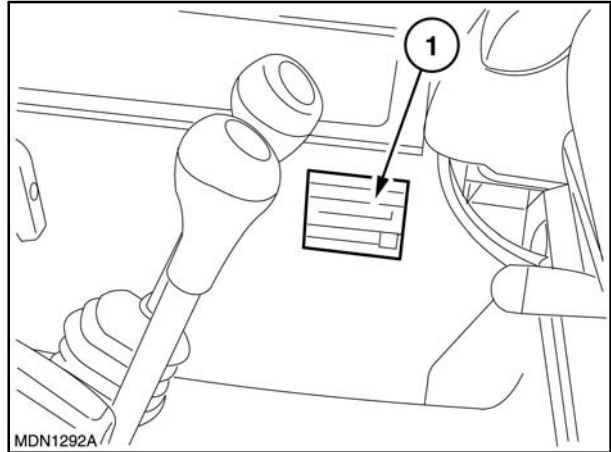
### Frame and engine type identification – Fig. 1

The data are shown on the plate (1) on the right-hand side.

Indicate below the corresponding serial number.

N°

---



1

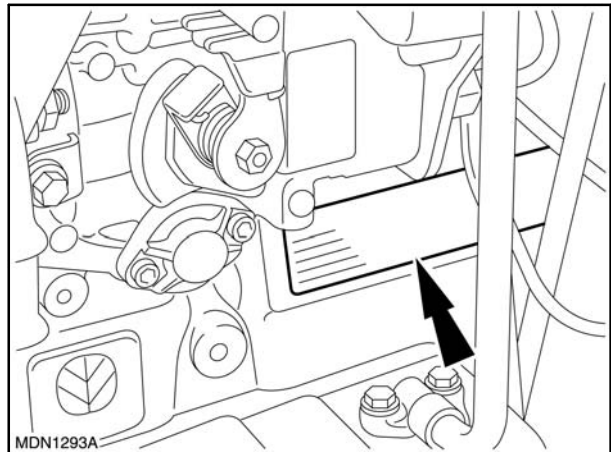
### Engine number and type identification data (MODEL TK4030V) – Fig. 2

The plate with the engine data installed on the tractor is fitted on the left-hand side of the engine near the hydraulic pumps.

Indicate below the corresponding serial number.

N°

---



2

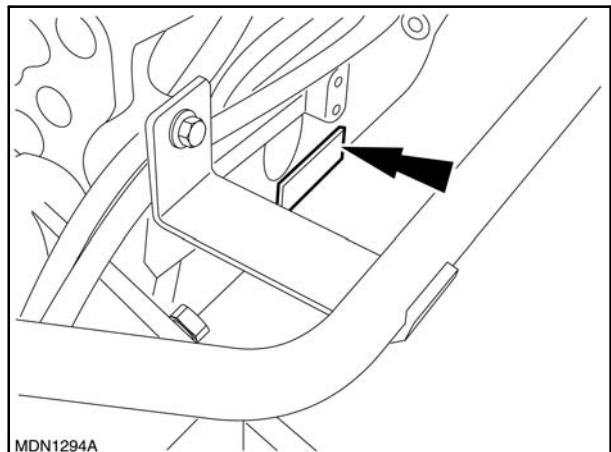
### Engine number and type identification data (MODEL TK4050 TK4050M TK4060) – Fig. 2

The plate with the engine data installed on the tractor is fitted on the left-hand side of the engine.

Indicate below the corresponding serial number.

N°

---



3



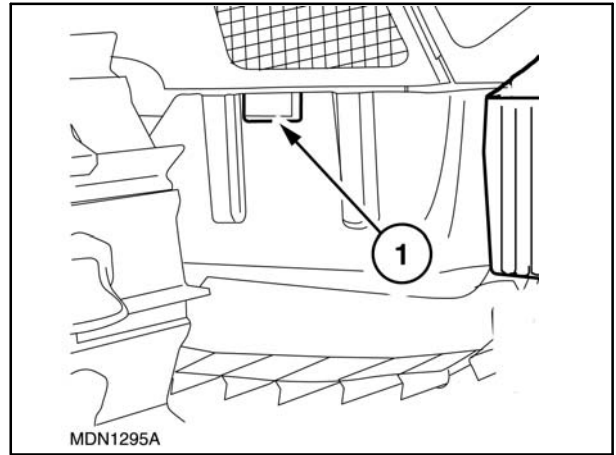
**Frame number and type identification data – Fig. 3**

The serial number and frame type are shown on a plate (1) located on the right-hand side of the frame.

Indicate below the corresponding serial number.

N°

---



4

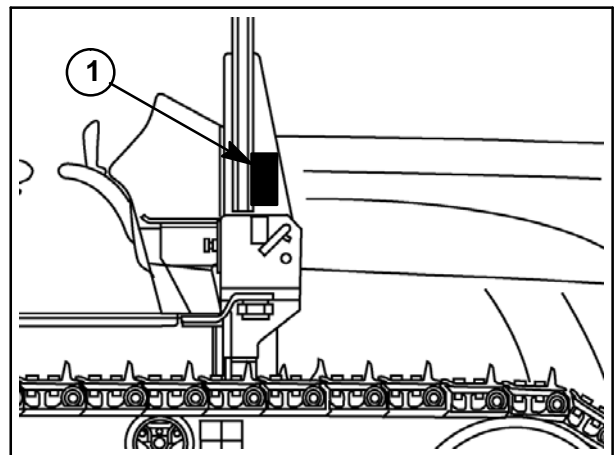
**Roll bar identification data – Fig. 3**

The frame serial number is given on the plate (1) on the right-hand side.

Indicate below the corresponding serial number.

N°

---



5

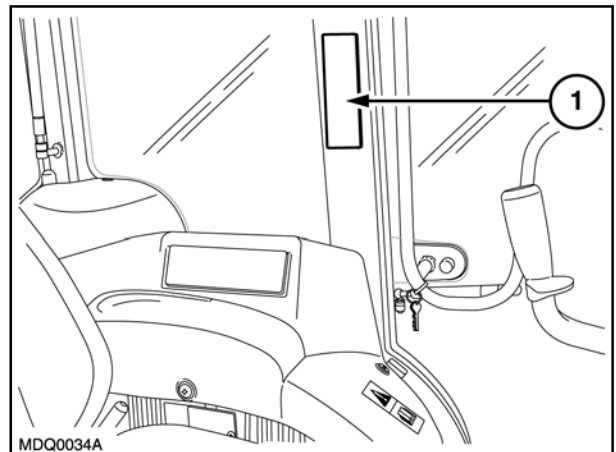
**Cab identification data – Fig. 3**

The cab serial number is shown on the plate (1) located on the left-hand upright inside the cab.

Indicate below the corresponding serial number.

N°

---



6

## ECOLOGY AND THE ENVIRONMENT

Soil, air, and water are vital factors of agriculture and life in general. When legislation does not yet rule the treatment of some of the substances which are required by advanced technology, common sense should govern the use and disposal of products of a chemical and petrochemical nature.

The following are recommendations which may be of assistance:

- Become acquainted with and ensure that you understand the relative legislation applicable to your country.
- Where no legislation exists, obtain information from suppliers of oils, filters, batteries, fuels, antifreeze, cleaning agents, etc., with regard to their effect on man and nature and how to safely store, use and dispose of these substances. Agricultural consultants will, in many cases, be able to help you as well.

### HELPFUL HINTS

1. Avoid filling tanks using cans or inappropriate pressurized fuel delivery systems which may cause considerable spillage.
2. In general, avoid skin contact with all fuels, oils, acids, solvents, etc. Most of them contain substances which may be harmful to your health.
3. Modern oils contain additives. Do not burn contaminated fuels and or waste oils in ordinary heating systems.
4. Avoid spillage when draining off used engine coolant mixtures, engine, gearbox and hydraulic oils, brake fluids, etc. Do not mix drained brake fluids or fuels with lubricants. Store them safely until they can be disposed of in a proper way to comply with local legislation and available resources.
5. Modern coolant mixtures, i.e. antifreeze and other additives, should be replaced every two years. They should not be allowed to get into the soil but should be collected and disposed of safely.
6. Do not open the air-conditioning system yourself. It contains gases which should not be released into the atmosphere. Your dealer or air conditioning specialist has a special extractor for this purpose and will have to recharge the system properly.
7. Repair any leaks or defects in the engine cooling or hydraulic system immediately.
8. Do not increase the pressure in a pressurized circuit as this may lead to a component failure.
9. Protect hoses during welding as penetrating weld splatter may burn a hole or weaken them, allowing the loss of oils, coolant, etc.

# PRECAUTIONARY STATEMENTS

## PERSONAL SAFETY

Throughout this manual and on machine decals, you will find precautionary statements (“**DANGER**”, “**WARNING**”, and “**CAUTION**”) followed by specific instructions. These precautions are intended for the personal safety of you and those working with you. Please take the time to read them.

---

 **DANGER** 

---

This word “**DANGER**” indicates an immediate hazardous situation that, if not avoided, will result in death or serious injury. The color associated with Danger is RED.

---

---

 **WARNING** 

---

This word “**WARNING**” indicates a potentially hazardous situation that, if not avoided, could result in death or serious injury. The color associated with Warning is ORANGE.

---

---

 **CAUTION** 

---

This word “**CAUTION**” indicates a potentially hazardous situation that, if not avoided, may result in minor or moderate injury. It may also be used to alert against unsafe practices. The color associated with Caution is YELLOW.

---

**FAILURE TO FOLLOW THE “DANGER”, “WARNING”, AND “CAUTION” INSTRUCTIONS MAY RESULT IN SERIOUS BODILY INJURY OR DEATH.**

## MACHINE SAFETY

The precautionary statement (“**IMPORTANT**”) is followed by specific instructions. This statement is intended for machine safety.

**IMPORTANT:** *The word “IMPORTANT” is used to inform the reader of something he needs to know to prevent minor machine damage if a certain procedure is not followed.*

## INFORMATION

**NOTE:** *Instructions used to identify and present supplementary information.*

## **IMPORTANT WARNINGS**

The machine is designed and produced exclusively for agricultural use.

All other use will be considered to be contrary to the use specified by CNH AMERICA LLC, who cannot be held liable for damage to property or the machine, or for personal injuries which may result.

Persons who risk improper use will therefore assume the responsibility for any consequences arising from such use.

Compliance with the instructions for use, maintenance and repairs described in this manual, are the essential preconditions for the use specified by CNH AMERICA LLC.

The machine must only be used, serviced or repaired by personnel trained in the relevant working methods and safety regulations and who have been authorized to work on the machine.

The user must also observe the rules concerning general safety and accident prevention, including the Highway Code when driving on public highways.

Any arbitrary modifications made to this machine will release CNH AMERICA LLC from any liability resulting from damage or injury.

CNH AMERICA LLC and all its distribution organizations, inclusive of, but not restricted to, national, regional or local distributors, cannot be held liable for damage resulting from the malfunction of parts and/or components not approved by CNH AMERICA LLC.

Under no circumstances will a guarantee be issued for products made or sold by CNH AMERICA LLC that are damaged as a result of the malfunction of parts and/or components not approved by CNH AMERICA LLC.

## WORKING SAFELY

### GENERAL INSTRUCTIONS

1. During the manufacturing of this tractor, every step has been taken to ensure safe operation. However, the best way to avoid accidents is to exercise caution at all times. Once the accident has already happened it is too late to remember what steps should have been taken.

2. Read this manual carefully before starting, using, carrying out maintenance, refuelling or performing any other type of operation on the tractor.

3. The time spent reading this manual will allow you to get to know your tractor, thereby saving time and effort. This will also help prevent accidents from taking place.

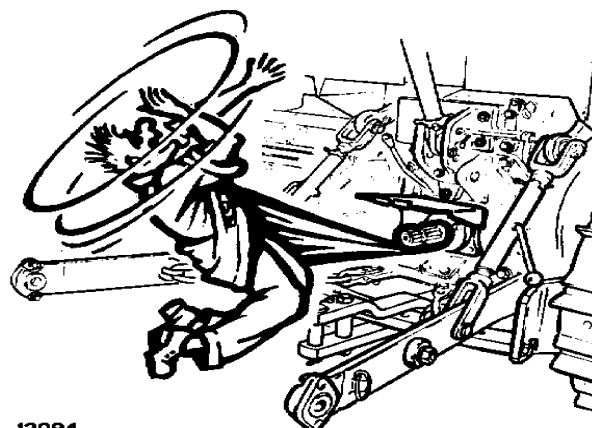
4. Read all the safety decals on the machine and follow the instructions thereon before starting, operating, refuelling or carrying out maintenance on the machine. Promptly replace any decals that are damaged, lost or illegible. Clean the decals if they are covered by mud or debris.

5. Remember that the tractor is exclusively designed for agricultural use. Any other use will require prior authorisation from CNH AMERICA LLC.

6. It is advisable to keep a first aid kit on hand.

7. The tractor must only be used by responsible personnel, trained in tractor use and authorised to operate the machine.

8. Do not alter the injection system calibration in an attempt to increase maximum engine speed.



12094

7

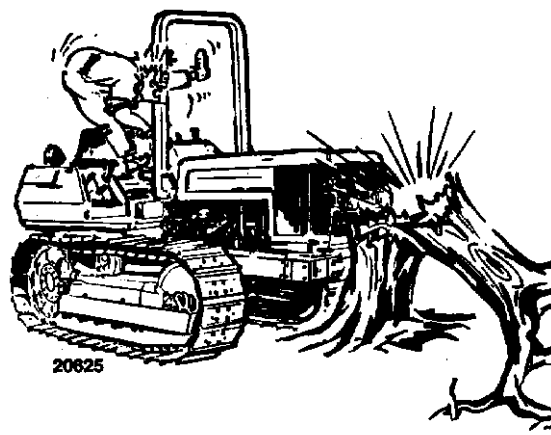
9. Do not wear loose clothing that may be trapped in moving parts.

Check that all rotating parts connected to the power take-off are correctly protected.

10. Do not alter the calibration of the pressure relief valves in the various hydraulic circuits (hydraulic lift, auxiliary control valves, etc.).

11. Avoid using the tractor in unsuitable physical conditions, stop work instead.

12. Enter and leave the tractor using the steps and handles provided. Keep these fittings free of mud and debris.



8

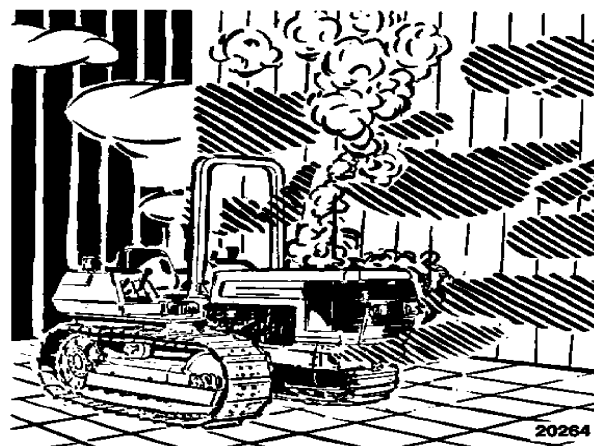
13. Always operate with the roll bar correctly and securely fitted on the tractor: periodically check that the fittings are not loose and that all parts of the structure are free from any damage and deformation. Do not modify the roll bar by welding parts, drilling holes, etc., as this could adversely affect the rigidity of the structure.

### STARTING THE TRACTOR

14. Before starting the engine, check that the handbrake is on and that the gears and power take-off are disengaged, even if the tractor is fitted with a start-up safety device. Never disconnect the start-up safety switch. If the switch does not work correctly, contact your local dealer for eventual repair operations.

15. Before starting the engine, make sure that all attached implements are lowered to the ground.

16. Before starting the engine, check that all covers and guards are correctly in position (roll bar, bonnet, power take-off guard, etc.).



9

17. Never start or manoeuvre the tractor unless seated in the driving position.

18. Before moving the tractor, always check that the area is free of persons or obstacles.

19. Never run the engine in a closed space without ensuring adequate ventilation. Exhaust fumes are damaging to the health and can be lethal.

Thank you so much for reading.  
Please click the “Buy Now!”  
button below to download the  
complete manual.



After you pay.

You can download the most  
perfect and complete manual in  
the world immediately.

Our support email:

[ebooklibonline@outlook.com](mailto:ebooklibonline@outlook.com)