

NEW HOLLAND

345D

445D

545D

Serial #A442024 and above

86570567 4/98

OPERATOR'S MANUAL



NEW HOLLAND

TO THE OWNER:

The warranty coverage that is extended to your tractor/tractor loader is explained in the Warranty and Limitation of Liability form. Your dealer will provide you with a copy of the warranty and retain a copy which you have signed. After you read the warranty, ask your dealer to explain any points that you may not understand.

This tractor/tractor loader was designed to power and propel itself. It is intended to dig, load and move material in normal and customary applications.

Do not modify or alter or permit anyone else to modify or alter this tractor/tractor loader or any of its components or any function without first consulting an authorized New Holland dealer. If you have any questions regarding modifications, contact New Holland North America, Inc., 500 Diller Ave., New Holland, PA 17557.

Your safety and the safety of those around you depends upon the care and good judgment you use while operating this equipment. Read the safety precautions carefully.

After you have operated the tractor/tractor loader for 50 hours, take your unit and this manual to your selling dealer. He will perform the factory recommended 50 hour service. You will be responsible for the cost of lubricants, fluids, filters and other items replaced as part of normal maintenance. Prior to taking the unit to your selling dealer for service, it is recommended that you contact them to determine any other charges for which you may be responsible.

All data given in this book is subject to production variations. Dimensions and weights are approximate only and the illustrations do not necessarily show tractors in standard condition. For exact information about any particular tractor/tractor loader, please consult your New Holland dealer.



CAUTION: THIS SYMBOL IS USED THROUGHOUT THIS BOOK WHENEVER PERSONAL SAFETY IS INVOLVED. TAKE TIME TO READ AND FOLLOW THE INSTRUCTIONS. BE CAREFUL!

CAUTION: PICTURES IN THIS MANUAL MAY SHOW PROTECTIVE SHIELDING OPEN OR REMOVED TO BETTER ILLUSTRATE A PARTICULAR FEATURE OR ADJUSTMENT.

BE CERTAIN, HOWEVER, TO CLOSE OR REPLACE ALL SHIELDING BEFORE OPERATING THE MACHINE.

IMPROVEMENTS

New Holland North America, Inc. is continually striving to improve its products. We reserve the right to make improvements or changes when it becomes practical and possible to do so, without incurring any obligation to make changes or additions to the equipment sold previously.



NEW HOLLAND WARRANTY AND LIMITATION OF LIABILITY - INDUSTRIAL PRODUCTS

COVERAGE PROVIDED

New Holland North America, Inc. or New Holland Canada, Ltd., hereinafter called "Company" warrants to the retail purchaser of each new Product (as listed below) that the Selling Dealer will repair or replace any part thereof found to be defective in materials or workmanship within the following periods. This warranty is for the benefit of the original or subsequent purchaser when purchased from an authorized New Holland dealer.

BASIC WARRANTY

Product	Warranty Period (whichever comes first)
Industrial Tractors	12 Months
Industrial Tractor Loaders	12 Months
Industrial Backhoe Loaders	12 Months
Industrial Tractor Attachments	12 Months
Skid-Steer Loaders and Attachments	12 Months
*Composter	12 Months
*Commercial Mower and Attachments	24 Months or 1000 Hours
Replacement Parts	90 days or to end of Basic Warranty (whichever is longer)

*ESP is not available for this product.

LIMITATIONS, INCLUDING DISCLAIMER OF IMPLIED WARRANTIES AND CONSEQUENTIAL DAMAGES

This warranty gives you specific legal rights and you may also have other rights which vary, depending on state or provincial laws.

New Holland North America, Inc. or New Holland Canada, Ltd. does not authorize any person or dealer to create for it any other obligation or liability in connection with these products. TO THE EXTENT ALLOWED BY LAW, ANY IMPLIED WARRANTY OF MERCHANTABILITY OR FITNESS APPLICABLE TO THIS PRODUCT IS LIMITED TO THE STATED DURATION OF THIS WRITTEN WARRANTY. NEITHER COMPANY NOR THE SELLING DEALER SHALL BE LIABLE FOR LOSS OF THE USE OF THE PRODUCT, LOSS OF TIME, INCONVENIENCE, COMMERCIAL LOSS OR CONSEQUENTIAL DAMAGES.

Some states and provinces do not allow limitations on how long an implied warranty will last or the exclusion or limitation of incidental or consequential damages, so the above limitations or exclusions may not apply to you.

The remedy of repair or replacement of a defective part during the warranty period herein specified shall be the purchaser's exclusive remedy.

EXTENDED SERVICE PLAN (ESP)

When offered by the Company, the option to purchase an Extended Service Plan has been explained and:

- I accept and have signed the completed registration form
- I decline the Extended Service Plan
- I will consider later (within 180 days)

PROTECTIVE EQUIPMENT

Rollover protective structure (ROPS) and seat belts are provided as standard equipment on all New Holland industrial tractors, skid-steer loaders and commercial mowers and we strongly recommend their use. Customers who elect to remove or not use this protection do so at their own risk.

- I acknowledge the existence of OSHA regulations pertaining to ROPS/FOPS. _____
- A PTO master shield, if applicable, has been installed on the machine. _____
- The correct Operator's Manual has been furnished. _____
- Safety precautions were explained to me by the Selling Dealer. _____

ACKNOWLEDGEMENT/WARRANTY TRANSFER

The blank spaces under "Protective Equipment" have been filled in and are correct, and I acknowledge that I have read and I accept this Warranty and Limitation of Liability.

Purchaser _____	Dealer _____ Code _____
Address _____	Address _____
City _____ State _____ Zip _____	City _____ State _____ Zip _____
Model _____ Serial No. _____	Retail Date _____ / _____ / _____
Attachment Model _____ SN _____	Extended Service Plan Expires on _____ / _____ / _____ (Subject to confirmation by NH)
Attachment Model _____ SN _____	
Purchaser _____ Date _____	Dealer _____ Date _____
Signature	Signature

New Holland Warranty Detail

The warranty period will begin on date of original retail sale or date of original use, whichever is earlier.

- The obligation of Company to the purchaser under this warranty is limited to the repair or replacement of defective parts by an authorized New Holland dealer and will be done free of charge for both parts and labor using genuine New Holland replacement parts. Repair or replacement in accordance with this warranty shall constitute fulfillment of all liabilities of Company and the Selling Dealer in respect to such Products.
- Repairs or replacements will be performed by the Selling Dealer, following delivery of the Product by the purchaser to the Dealer's place of business. When the purchaser has moved a long distance from the Selling Dealer, or the Selling Dealer is no longer in business, any New Holland dealer authorized to sell and service the described Products may perform the repair at its dealership.
- The Selling Dealer shall review these warranty provisions with the purchaser prior to retail sale, secure his acknowledgement of delivery of this warranty and record the date of original retail sale or date of original use.
- To obtain warranty service, the purchaser must (1) report the product defect to an authorized New Holland dealer and request repair within the applicable warranty term and (2) present evidence of the warranty start date.

WHAT IS NOT COVERED BY THE WARRANTY?

This warranty shall NOT apply under the following conditions:

- (i) With respect to vendor warranty items such as tires, tubes, and attachments which shall be warranted by their manufacturer, or local representative thereof.
- (ii) If the unit has been subject to misapplication, abuse, misuse, negligence of proper maintenance or other negligence, fire or other accident.
- (iii) If parts or attachments other than those made or marketed by New Holland North America, Inc. or New Holland Canada, Ltd., have been used in connection with the unit, and in the sole judgment of Company such use affects its performance, stability or reliability.
- (iv) If the unit has been altered or repaired outside of a New Holland dealership in a manner which, in the sole judgment of Company, affects its performance, stability or reliability.
- (v) Batteries are covered by a separate pro rata adjustment warranty. The pro-rata plan covers the battery fully for the basic product warranty period as indicated, with any remaining warranty pro-rated according to the months of service.
- (vi) The purchaser shall be responsible for payment of dealer travel time to the machine or to deliver the machine to the dealer's service shop for repair. New Holland warranty does not cover delivery charges or travel time.
- (vii) The Company shall have no liability for used equipment sold beyond the specified coverage period.
- (viii) No warranty shall apply to damage resulting from accident or damage caused by environment (such as exposure to corrosive material). The Company shall not be responsible for rental equipment used to replace the equipment being repaired.
- (ix) This warranty shall NOT apply to normal maintenance services (such as tune-ups, fuel injection system cleaning or wheel, brake and clutch adjustments), to normal replacement of service items (such as filters and brake or clutch linings), or to normal deterioration due to use or exposure (such as belts and exterior finish). New Holland shall not be responsible for normal replacement parts such as cutting knives, chains, belts, clutches, filters, oil, or other parts which are worn out, unless they are determined to be defective in material or workmanship.
- (x) This warranty shall NOT apply to any New Holland Product which is retailed or distributed by anyone other than New Holland North America, Inc. or New Holland Canada, Ltd., through its authorized dealers. This warranty shall NOT apply to any Product which is normally operated outside of the United States, and/or Canada.
- (xi) This warranty shall NOT apply if the purchaser, insurance company, or any other entity or individual acting on behalf of the purchaser seeks reimbursement for the dollar value of the repair(s) or replacement(s) covered under this warranty.

RIGHT TO MAKE DESIGN CHANGES

Company reserves the right to make changes in the design and other changes in its products at any time and from time to time without notice and without incurring any obligation with respect to any product previously ordered from it, sold or shipped by it.

FEDERAL EMISSIONS WARRANTY

(California owner's emissions warranty is covered elsewhere)

New Holland warrants that your new 1998 and later heavy-duty off-road diesel engine was designed, built, and equipped to conform to applicable U.S. Environmental Protection Agency regulations for a period of use of five years or 3,000 hours of operation, whichever occurs first.

The new model year, class of diesel engine, and emission application determination for your engine are identified on the emission control information label affixed to the top of your engine's rocker arm cover. The warranty period begins on the date the new equipment is sold to the first retail purchaser.

Any emission control system parts which are proven defective during normal use will be repaired or replaced during the warranty period. The warranty repairs and service will be performed by any authorized New Holland dealer at the dealer's place of business, with no charge for parts or labor (including diagnosis).

As the engine owner, you are responsible to perform all the required maintenance listed in your owner's manual. New Holland will not deny an emission warranty claim solely because you have no record of maintenance; however, a claim may be denied if your failure to perform maintenance resulted in the failure of a warranted part. Receipts covering regular maintenance should be retained in the event of questions and these receipts should be passed on to each subsequent owner of the engine.

It is recommended replacement parts used for maintenance or repairs be New Holland Service Parts to maintain the quality originally designed into your emission certified engine. The use of non-New Holland parts does not invalidate the warranty on other components unless the use of such parts causes damage to warranted parts.

New Holland wishes to assure the emission control systems warranty is being properly administered. If you believe you have not received the service entitled to under this warranty, you should contact the nearest New Holland Branch Office for assistance. The address and phone number of each Branch Office is in your vehicle owner's manual. If additional assistance or information is needed, contact:

Service Department
New Holland North America, Inc.
500 Diller Avenue
New Holland, PA 17557
(717) 355-1121

Please note that the Emission Warranty does not cover:

1. Systems and parts that were not first installed on the new equipment or engine as original equipment by New Holland.
2. Part malfunctions caused by abuse, misuse, improper adjustment, modification, alteration, tampering, disconnection, improper or inadequate maintenance, or use of non-recommended fuels and lubricating oils.
3. Accident caused damage, acts of nature, or other events beyond New Holland's control.
4. Replacement of expendable items made in connection with scheduled maintenance.
5. Parts requiring replacement, inspection or adjustment maintenance intervals for reasons other than being defective.
6. Parts which are not New Holland Service Parts.
7. Loss of time, inconvenience, loss of use of equipment/engine or commercial loss.
8. Equipment with altered or disconnected hourmeter where the hours cannot be determined.
9. Equipment normally operated outside the United States.
10. Non-defective parts replaced by other than New Holland dealers.

Coverage

This emission control system warranty applies to the following 332T/JC engine model emission control parts.

Fuel Injection Pump
Fuel Injectors
Turbocharger
Intake Manifold
Exhaust Manifold
Boost Pressure Tubing-connection to Aneroid Device ON F.I.P.

CONTENTS

OWNER ASSISTANCE	0-6
SAFETY	0-7
OPERATION	1-1
LUBRICATION AND MAINTENANCE	2-1
SPECIFICATIONS	3-1
INDEX	3-11
PRE-DELIVERY SERVICE	3-13
50 HOUR SERVICE	3-17

OWNER ASSISTANCE

We at New Holland and your New Holland dealer want you to be completely satisfied with your investment. Normally any problems with your equipment will be handled by your dealer's Service Department. Sometimes, however, misunderstanding can occur. If your problem has not been handled to your satisfaction, we suggest the following.

1. Contact the owner or General Manager of the dealership, explain the problem, and request assistance. When additional assistance is needed, your dealer has direct access to our branch office.
2. If you cannot obtain satisfaction by doing this, contact the branch office in your area and provide them with:
 - Your name, address, and telephone number
 - Machine model and serial number
 - Dealership name and address
 - Machine purchase date and amount of use
 - Nature of problem

Atlanta

4727 N Royal Atlanta Dr Suite P
Caller Service 105018
Tucker, GA 30085-5018
Telephone: (770) 723-3605
States: AL, FL, GA, KY, MS,
NC, SC, TN, VA

Dallas

1340 Walnut Hill Lane Bldg 2
P.O. Box 167528
Irving, TX 75016-7528
Telephone: (972) 756-4919
States: AR, AZ, CA, CO, HI, KS,
LA, MO, NM, NV, OK, TX, UT

Minneapolis

6301 W Old Shakopee Rd
P.O. Box 386150
Minneapolis, MN 55438-6150
Telephone: (612) 887-4231
States: AK, IA, ID, IL, MN, MT,
ND, NE, OR, SD, WA, WI, WY

New Holland

200 Commerce St.
P.O. Box 527
Mountville, PA 17554-0527
Telephone: (717) 285-8302
States: CT, DE, IN, MA, MD, ME,
MI, NH, NJ, NY, OH, PA, RI, VT,
WV

Calgary

Suite 220
3030 Third Ave. NE
Box 1616, Stn M
Calgary, AB
CANADA T2P 2M7
Telephone: (403) 569-3208

3. If you need further assistance contact:

*Service Department
Mail Station 500
New Holland North America, Inc.
New Holland, PA 17557*

When contacting your branch office or Service Department, be aware that your problem will likely be resolved in the dealership using the dealer's facilities, equipment, and personnel. So it is important that your initial contact be with the dealer.

A Service Publications Catalog & Order Form is available which lists the operator's and service manuals for many prior model and most current model Ford - New Holland - Versatile tractors, equipment, and consumer products. To obtain a copy of this catalog, please call 1-800-635-4913.

PRECAUTIONARY STATEMENTS

PERSONAL SAFETY

Throughout this manual and on machine decals, you will find precautionary statements (“CAUTION”, “WARNING”, and “DANGER”) followed by specific instructions. These precautions are intended for the personal safety of you and those working with you. Please take the time to read them.



CAUTION: THE WORD “CAUTION” IS USED WHERE A SAFE BEHAVIORAL PRACTICE ACCORDING TO OPERATING AND MAINTENANCE INSTRUCTIONS AND COMMON SAFETY PRACTICES WILL PROTECT THE OPERATOR AND OTHERS FROM ACCIDENT INVOLVEMENT.



WARNING: THE WORD “WARNING” DENOTES A POTENTIAL OR HIDDEN HAZARD WHICH HAS A POTENTIAL FOR SERIOUS INJURY. IT IS USED TO WARN OPERATORS AND OTHERS TO EXERCISE EVERY APPROPRIATE MEANS TO AVOID A SURPRISE INVOLVEMENT WITH MACHINERY.



DANGER: THE WORD “DANGER” DENOTES A FORBIDDEN PRACTICE IN CONNECTION WITH A SERIOUS HAZARD.

FAILURE TO FOLLOW THE “CAUTION”, “WARNING”, AND “DANGER” INSTRUCTIONS MAY RESULT IN SERIOUS BODILY INJURY OR DEATH.

MACHINE SAFETY

Additional precautionary statements (“ATTENTION” and “IMPORTANT”) are followed by specific instructions. These statements are intended for machine safety.

ATTENTION: The word “ATTENTION” is used to warn the operator of potential machine damage if a certain procedure is not followed.

IMPORTANT: The word “IMPORTANT” is used to inform the reader of something he needs to know to prevent minor machine damage if a certain procedure is not followed.

FOREWORD

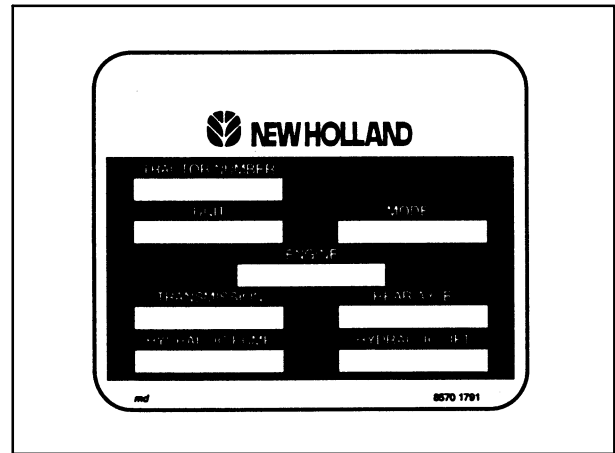
This manual has been prepared to assist you in the correct procedure for running-in, operation and maintenance of your new New Holland tractor. It contains specific information on its many features; the attachments that are available; instructions for making minor repairs and adjustments; safety precautions; general specifications; suggested operating techniques; and the pre-delivery and 50 hour check lists.

Your tractor has been designed and built to give maximum performance, economy and ease of operation under a wide variety of operating conditions. Prior to delivery, the tractor was carefully inspected, both at the factory and by

your Dealer, to ensure that it reaches you in optimum condition. To maintain this condition and ensure trouble-free operation, it is important that the routine services, as specified in this manual, are carried out at the recommended intervals.

Read this manual carefully and keep it in a convenient place for future reference. If at any time you require advice concerning your tractor, do not hesitate to contact your Dealer. He has factory trained personnel, genuine New Holland parts and the necessary equipment to carry out your service requirements.

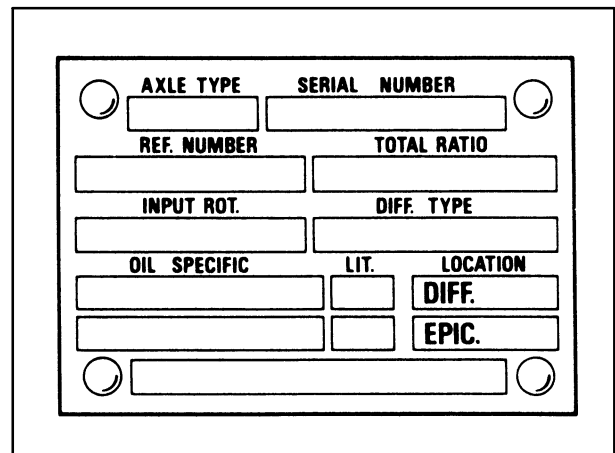
A vehicle identification plate is located on the underside of the right-hand hood panel.



If your tractor is equipped with front-wheel drive option, then a similar plate is affixed to the rear right-hand side of the front axle casing. For convenience, the numbers shown on the plates should be recorded in the panels below and quoted to your Dealer should the tractor require service.

“New Holland North America, Inc., whose policy is one of continuous improvement, reserves the right to make changes in design and specifications at any time without notice and without obligation to modify units previously built.”

All data given in this manual is subject to production variations. Dimensions and weights are approximate only and the illustrations do not necessary show tractors in standard condition. For exact information about any particular tractor, please consult your Dealer.



SAFETY PRECAUTIONS

A careful operator is the best operator. Most accidents can be avoided by observing certain precautions. To help prevent accidents, read and take the following precautions before operating the tractor. Equipment should be operated only by those who are responsible and instructed to do so.

IMPORTANT: In this manual references are made to positions of switches and components as located to the left-hand and right-hand side of the vehicle. In all situations, the position described is when the operator is seated on the vehicle and looking forward.

THE TRACTOR

1. Read the Operator's Manual carefully before using the tractor. Lack of operating knowledge can lead to accidents.
2. Ensure any attached equipment or accessories are correctly installed, are approved for use with the tractor, do not overload the tractor, and are operated and maintained in accordance with the instructions issued by the equipment or accessory manufacturer.
3. Use an approved ROPS and seat belt for safe operation. Overturning a tractor without a ROPS can result in death or injury.
4. Always use the seat belt with the ROPS.
5. Use the handholds and step plates when getting on and off the tractor to prevent falls. Keep steps and platform clear of mud and debris.
6. Do not permit anyone but the operator to ride on the tractor. There is no safe place for extra riders.
7. Remember that your tractor, if abused or incorrectly used, can be dangerous and become a hazard both to the operator and bystanders. Do not overload or operate with attached equipment which is unsafe, not designed for the particular task, or is poorly maintained.
8. Replace all missing, illegible, or damaged safety decals.
9. Keep safety decals clean of dirt and grime.

SERVICING THE TRACTOR

1. The cooling system operates under pressure which is controlled by the radiator cap. It is dangerous to remove the cap while the system is hot. Always turn the cap slowly to the first stop and allow the pressure to escape before removing the cap entirely.
2. Do not smoke while refueling the tractor. Keep any type of open flame away. Wait for the engine to cool before refueling.
3. Keep the tractor and equipment, particularly brakes and steering, maintained in a reliable and satisfactory condition to ensure your safety and comply with legal requirements.
4. To prevent fires or explosions, keep open flames away from battery or cold weather starting aids. To prevent sparks which could cause explosion, use booster cables according to instructions in this manual.
5. Stop the engine, apply the hand brake, and lower the loader and backhoe to the ground before performing any service on the tractor.
6. Escaping hydraulic/diesel fluid under pressure can penetrate the skin causing serious injury.
 - DO NOT use your hand to check for leaks. Use a piece of cardboard or paper to search for leaks.
 - Stop the engine and relieve pressure before connecting or disconnecting lines.
 - Tighten all connections before starting the engine or pressurizing lines.
 - If fluid is injected into the skin, obtain medical attention immediately or gangrene may result.

-
7. Do not modify or alter or permit anyone else to modify or alter this tractor or any of its components or any tractor function without first consulting your Dealer.
 8. The fuel oil in the injection system is under high pressure and can penetrate the skin. Unqualified persons should not remove or attempt to adjust a pump, injector, nozzle or any other part of the fuel injection system. Failure to follow these instructions can result in serious injury.
 9. Continuous long term contact with used engine oil may cause skin cancer. Avoid prolonged contact with used engine oil. Wash skin promptly with soap and water.
 10. Never allow anyone to stand or work under or reach through the loader lift arms when the loader is raised unless the loader cylinders are blocked in the extended position using a suitable support.
 11. Never attempt to repair or tighten hoses under pressure.
 12. Always check pivot pins, snap rings and main attaching bolts daily.
 13. When it is necessary to remove pins from the loader that require a hammer and drift, use only a brass hammer and a brass drift and wear safety glasses.
 14. Do not lubricate or make mechanical adjustments while the unit is in motion or when the engine is running. However, if minor engine adjustments must be made, apply the parking brake, securely block the wheels, and use extreme caution. Be certain that the loader is fully lowered or supported so that it cannot fall.
 15. Always wear safety goggles when servicing or repairing the machine.
 16. When it is necessary to tow the tractor, do not exceed 5 MPH (8.0 KPH). Avoid towing the tractor over long distances. Tow only according to instructions in this manual.
 17. Adequately support the loader when it is detached from the tractor.
 18. Some components on your tractor, such as the cylinder head gasket, may contain asbestos. Breathing asbestos dust is dangerous to your health. You are therefore advised to have any maintenance or repair operations on such components carried out by your Dealer. If, however, service operations are to be undertaken on parts that contain asbestos, the essential precautions listed below must be observed:
 - Work out of doors or in a well ventilated area.
 - Dust found on the tractor or produced during work on the tractor should be removed by extraction, not by blowing.
 - Dust waste should be dampened, placed in a sealed container, and marked to ensure safe disposal.
 - If any cutting, drilling, etc., is attempted on materials containing asbestos, the item should be dampened and only hand tools or low speed power tools used.
 19. Tractor wheels are very heavy. Handle with care and ensure, when stored, that they cannot topple and cause injury.

OPERATING THE UNIT

1. Position the transmission in neutral and apply the parking brake before starting the tractor.
2. Do not start the engine or operate controls while standing beside the tractor. Always sit in the tractor seat when starting the engine or operating the controls.
3. Do not bypass the safety start switch. Consult your Dealer if your safety start controls malfunction. Use booster cables only in the recommended manner. Improper use can result in a tractor runaway (see "STARTING THE TRACTOR WITH BOOSTER CABLES" in the "CONTROLS, INSTRUMENTS, AND OPERATION" section).
4. Avoid accidental contact with the gearshift levers or power-reversing lever while the engine is running. Unexpected tractor movement can result from such contact.
5. Do not get off the tractor while it is in motion.
6. Never attach chains, ropes or cables to the loader or ROPS for pulling purposes.
7. Pull only from the swinging drawbar or the lower link drawbar in the down position. Use only a drawbar pin that locks in place. Pulling from the tractor rear axle or any point above the axle may cause the tractor to upset.
8. If the front end of the tractor tends to rise when heavy implements are attached to the three-point hitch, install front end or front wheel weights. Do not operate the tractor with a light front end.
9. Always set the hydraulic selector lever in Position Control when attaching equipment and when transporting equipment. Be sure hydraulic couplers are properly mounted and will disconnect safely in case of accidental detachment of implement.
10. Never leave the tractor without first lowering hydraulic equipment and loader buckets to the ground.
11. Stop the engine, apply the parking brake, and put the gearshift levers and/or power-reversing lever into neutral before dismounting.
12. Do not engage the parking brake while the tractor is in motion.
13. Never leave the tractor when it is parked on an incline. Always park the tractor on level ground where possible. If the tractor is to be parked on an incline, always lower the buckets so that the cutting lips contact the ground, apply the parking brake, and securely block the wheels.
14. Always keep a lookout for bystanders.
15. Always check overhead clearance, particularly when transporting the tractor.
16. If the engine or power steering ceases operating, stop the tractor immediately.
17. Do not run the engine in a closed building without adequate ventilation, as exhaust fumes can suffocate you.
18. Always carry out the recommended checks before commencing work each day.
19. Do not enter the platform from the rear.
20. Always check the location of gas and electrical lines before you start to dig.
21. Watch out for overhead and underground high-voltage electrical lines when operating the loader.
22. Never operate any controls when standing on the ground.
23. Always travel slowly over uneven ground.
24. Always use the recommended amount of counterweighting to ensure good stability.
25. Do not transport anyone in the loader bucket.
26. Always carry the loader bucket low for maximum stability and visibility, whether the bucket is loaded or empty.
27. Be careful when handling round objects such as oil drums, pipes or poles. Lifting too high or rolling back too far could result in these objects rolling rearward down the loader arms onto the operator.

Thank you so much for reading.
Please click the “Buy Now!”
button below to download the
complete manual.



After you pay.

You can download the most
perfect and complete manual in
the world immediately.

Our support email:

ebooklibonline@outlook.com