

NEW HOLLAND

TN65F

TN75F

TN90F

(Replaces All Previous Issues)

86608615 2/00

OPERATOR'S MANUAL



NEW HOLLAND

TO THE OWNER:

The warranty coverage that is extended to your tractor is explained in the Warranty and Limitation of Liability, Tractor form. Your dealer will provide you with a copy of the warranty and retain a copy which you have signed. After you read the warranty, ask your dealer to explain any points that you may not understand.

Do not modify or alter or permit anyone else to modify or alter this tractor or any of its components or any tractor function without first consulting an authorized New Holland Dealer. If you have any questions regarding tractor modifications contact New Holland North America, Inc., 500 Diller Ave., New Holland, PA. 17557.

A Roll Bar and seat belt were standard equipment for the tractor at the time of factory assembly. If the Roll Bar was deleted by the original purchaser or has been removed, it is recommended that you equip your tractor with a Roll Bar and seat belt. A Roll Bar is effective in reducing injuries during tractor overturn accidents. Overturning a tractor without a Roll Bar can result in serious injury or death. Roll Bar and seat belts are available for your tractor. If your tractor is not equipped with a Roll Bar and seat belt see your New Holland Dealer.

Your safety and the safety of those around you depends upon the care and good judgment you use while operating this equipment. Read the safety precautions carefully.

For a complete list of the delivery service checks performed by your dealer, refer to DELIVERY REPORT in this manual. The first copy is your record of the service performed and the second copy, which is to be removed from the manual, is your dealer's record. **MAKE SURE THAT YOU AND THE DEALER SIGN BOTH COPIES.**

After you have operated the tractor for 50 hours, take your tractor and this Manual to your selling dealer. He will perform the factory recommended 50-hour service. You will be responsible for the cost of lubricants, fluids, filters and other items replaced as part of normal maintenance. Prior to taking the tractor to your selling dealer for service, it is recommended that you contact them to determine any other charges for which you may be responsible.

All data given in this book is subject to production variations. Dimensions and weights are approximate only and the illustrations do not necessarily show tractors in standard condition. For exact information about any particular tractor please consult your New Holland dealer.



CAUTION: THIS SYMBOL IS USED THROUGHOUT THIS BOOK WHENEVER PERSONAL SAFETY IS INVOLVED. TAKE TIME TO READ AND FOLLOW THE INSTRUCTIONS. BE CAREFUL!

CAUTION: PICTURES IN THIS MANUAL MAY SHOW PROTECTIVE SHIELDING OPEN OR REMOVED TO BETTER ILLUSTRATE A PARTICULAR FEATURE OR ADJUSTMENT.

BE CERTAIN, HOWEVER, TO CLOSE OR REPLACE ALL SHIELDING BEFORE OPERATING THE MACHINE.

IMPROVEMENTS

New Holland North America, Inc. is continually striving to improve its products. We reserve the right to make improvements or changes when it becomes practical and possible to do so, without incurring any obligation to make changes or additions to the equipment sold previously.

CALIFORNIA EMISSION CONTROL WARRANTY STATEMENT

Your Warranty Rights and Obligations

The California Air Resources Board and New Holland are pleased to explain the emission control system warranty on your engine. In California, new 1998 and later heavy-duty off-road engines from 50 to 150 HP must be designed, built, and equipped to meet the State's stringent anti-smog standards. New Holland must warrant the emission control system on your engine for the periods of time listed below, provided there has been no abuse, neglect, or improper maintenance of your engine.

Your emission control system includes parts such as the fuel injection system and the air induction system.

Where a warrantable condition exists, New Holland will repair your heavy-duty off-road engine at no cost to you, including diagnosis, parts, and labor.

Manufacturer's Warranty Coverage:

The 1998 and later heavy-duty off-road engines are warranted from the original date of delivery for five years or 3,000 hours of operation, whichever occurs first. If any emission-related part on your engine is defective, the part will be repaired or replaced by New Holland.

Owner's Warranty Responsibilities:

- D As the heavy-duty off-road engine owner, you are responsible for the performance of the required maintenance listed in your owner's manual. New Holland recommends that you retain all receipts covering maintenance on your heavy-duty off-road engine, but New Holland cannot deny warranty solely for the lack of receipts or for your failure to ensure the performance of all scheduled maintenance.
- D As the heavy-duty off-road engine owner, you should, however, be aware that New Holland may deny you warranty coverage if your heavy-duty off-road engine or a part has failed due to abuse, neglect, improper maintenance, or unapproved modifications.
- D Your engine is designed to operate on commercially available diesel fuel only. Use of any other fuel may result in your engine no longer operating in compliance with California's emissions requirements.
- D You are responsible for initiating the warranty process. The ARB suggests that you present your heavy-duty off-road engine to a New Holland dealer as soon as a problem exists. The warranty repairs should be completed by the dealer as expeditiously as possible.

If you have questions regarding your warranty rights and responsibilities, you should contact your Branch Office at the address and phone number listed on the Owner Assistance page of your equipment's operator manual.

- D Prior to the expiration of the warranty, you must give notice of any failure of an emission control warranted part. Such notice must be given to New Holland or an authorized dealer, and you must deliver the engine to the repair location.
- D You, the owner, are responsible for incidental costs incurred by yourself or your employees as a result of a warrantable failure. Examples of such costs are communication expenses, meals and lodging.
- D The owner is responsible for any business costs or losses, any "downtime" expenses and any "cargo" damage which result from the failure of a warranted part. New Holland is not responsible for other incidental or consequential damages, including but not limited to fines, theft, vandalism or collisions.

Parts covered:

This emission control system warranty applies to the following emission control parts.

- Fuel Injection Pump
- Fuel Injectors
- Turbocharger
- Intake Manifold
- Exhaust Manifold
- Boost Pressure Tubing-connection to Fuel Injection Pump Device.

Any replacement part, equivalent in performance and durability, may be used in the performance of any maintenance or repairs and must be provided without charge to the owner. The use of these parts does not reduce the warranty obligations of New Holland. However, New Holland recommends the use of new, genuine New Holland service parts or New Holland approved rebuilt parts and assemblies. New Holland also recommends that the engine be serviced by a New Holland authorized dealer.

New Holland Responsibilities

Warranty work will be provided at no charge to the owner at any authorized dealer, using new genuine New Holland service parts or New Holland approved rebuilt parts or assemblies.

The owner will not be charged for diagnostic labor which leads to the determination that a warranted part is defective, if the diagnostic work was performed at a warranty station.

New Holland is liable for damages to other engine components caused by the failure under warranty of any warranted part.

Warranty Limitations

New Holland is not responsible for failures resulting from abuse or neglect by owner or operator.

New Holland warrants to the ultimate purchaser and each subsequent purchaser that the engine is designed, built, and equipped so as to conform with all applicable regulations adopted by the Air Resources Board, and that it is free from defects in materials and workmanship which cause the failure of a warranted part.

Any warranted part which is not scheduled for replacement as required maintenance, or which is scheduled only for regular inspection to the effect of "repair or replace as necessary" is warranted for the warranty period.

Any warranted part which is scheduled for replacement as required maintenance is warranted for the period of time prior to the first scheduled replacement point for that part.

New Holland is liable for damages to other engine components caused by the failure under warranty of any warranted part.

CONTENTS

Page

General information

To the user	iii
Tractor identification	iv
Important ecological considerations	vi
Always work safely	vii
Working safely	viii
Safety decals	xiv
Standardized symbols	xvii
Noise level information	xviii

Section 1

General information controls and instruments	1-1
Safety covers and guards	1-2
Controls and instruments	1-4

Section 2

Operation	2-1
Before using the tractor	2-1
Analogue instrument panel	2-5
Digital instrument panel	2-6
Transmission with range gear and mechanical shuttle 30/40 km/h (16forward+16reverse)	2-17
Transmission with creeper unit and mechanical shuttle 30/40 km/h (28forward+16reverse)	2-21
Transmission with range gear, mechanical shuttle and splitter 30/40 km/h (32forward+16reverse)	2-23
Transmission with creeper unit, mechanical shuttle and splitter 30/40 km/h (44forward+16reverse)	2-25
Transmission with electro-hydraulic hi-lo / Power-Shuttle 30/40 km/h (32forward+ 16reverse)	2-26

Transmission with hydraulic hi-lo/ Power-Shuttle and creeper unit 30/40 km/h (44v+ 16reverse)	2-34
Fast mechanical transmissions 40 km/h (4WD models)	2-36
Electronically controlled electro-hydraulic four-wheel drive	2-44
Differential lock	2-46
Power take-off	2-49
Mechanically controlled hydraulic lift	2-78
Electronically controlled hydraulic lift	2-83
Three-point linkage	2-92
Towing equipment	2-97
Rear remote control valves	2-101
Side remote control valves	2-103
Wheel track adjustment	2-107
Tires	2-113
Ballasting	2-122
Steering wheel adjustment	2-125
Seat adjustment	2-125
Heated and ventilated cab	2-127
Air conditioned cab	2-134

Section 3

Lubrication and maintenance	3-1
Introduction	3-1
Tractor refueling	3-2
Access for inspection and maintenance	3-4
Lubrication and maintenance table	3-5
Flexible maintenance	3-7
Instrument panel indicator lights	3-9
Every 10 hours of work	3-11
Every 50 hours of work	3-14
Every 300 hours of work	3-17
Every 900 hours of work	3-22
Every 1200 hours of work or every year	3-23
Every 1200 hours of work or every 2 years	3-24
General maintenance	3-28

Section 4

Troubleshooting	4-1
-----------------------	-----

Section 5

Specifications	5-1
----------------------	-----

Section 6

Alphabetic index	6-1
------------------------	-----

TO THE USER

GENERAL

This Use and Maintenance Manual provides a guide for the user with regard to running-in, use and maintenance of the tractor.

Read this manual carefully and keep in a convenient place for future reference. Do not hesitate to contact your local dealer for any queries concerning the tractor. The dealer can provide skilled personnel, trained by the Manufacturer, original spare parts and all tools and equipment necessary for your service requirements.

The tractor is designed as a power generator and drive-propulsion unit for use in normal and traditional agricultural conditions.

The tractor is also designed to provide maximum performance, economic running and easy use over a wide range of operations. Prior to delivery, all machines are carefully inspected (by both the Manufacturer and your local authorized dealer), to make sure that they reach the user in perfect condition. To maintain the tractor in this condition and ensure trouble-free operation, the routine maintenance described in Section 3 of this manual must be carried out at the specified intervals.

CLEANING THE TRACTOR

Your tractor is an advanced machine, fitted with an electro-hydraulic control system. Care should be taken when cleaning the tractor, especially if a pressurized water cleaner is used.

J Never stand too close to the tractor or direct the water jet on electrical components, seals or intake openings, etc.

J Never direct jets of cold water at the hot engine or exhaust. See also Section 3 (Recommendations for bodywork maintenance).

SAFETY

Safety precautions for the operator and bystanders are shown on pages vii to xiii inclusive. Read the safety instructions and follow recommendations and hints **before** starting to use the tractor.

SERVICE AFTER THE FIRST 50 HOURS OF WORK

The operations required for the first service are shown at the end of the Manual, immediately prior to the index.

After the first 50 hours of use, return to the dealer with your tractor and this Manual in order to carry out the Manufacturer's checks and to fill in the certificates included on pages 1 and 3). The first sheet (page 1) must be compiled on completion of the service and held by the dealer. The second sheet (page 3) must be kept in the Manual for documentation and reference purposes. **Check that both copies are signed by both yourself and the dealer.**

SPARE PARTS

"Non-original" spare parts have not been tested or authorized by the Manufacturer. Instalment and/or use of such products may adversely affect the tractor's design specifications, thereby compromising operational safety. The manufacturer cannot be held responsible for any damage resulting from the use of "non-original" spare parts.

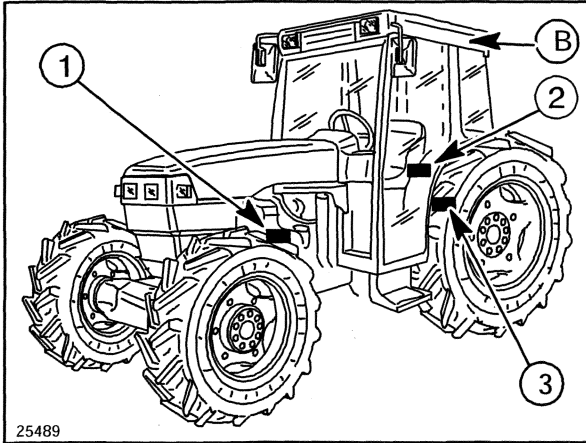
No modifications may be made to the tractor without written authorization from the Manufacturer.

WARRANTY

The tractor is guaranteed in accordance with current legislation in your country and in line with contractual agreements reached with the dealer at the time of sale. However, the warranty is no longer valid if the rules and instructions for the use and maintenance of the tractor, described in this Manual, are not observed.

TRACTOR IDENTIFICATION

Serial numbers and/or production codes identify the tractor and its main components. The identification data must be supplied by the dealer for requests for spare parts or service operations. Identification data is of fundamental importance in the event of theft of the tractor. The location of the various identification data is shown below.

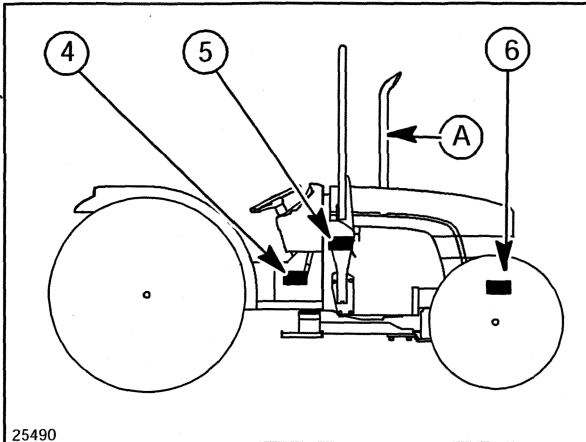


Left-hand side of the tractor - Fig. 1

1. Engine type and number (see fig. 3).
2. Cab identification plate, see fig. 4 (if the tractor is fitted with a safety roll bar, the plate is located on the right-hand upright, see fig. 5).
3. Frame and engine identification plate for tractors with cabs, (see fig. 4).

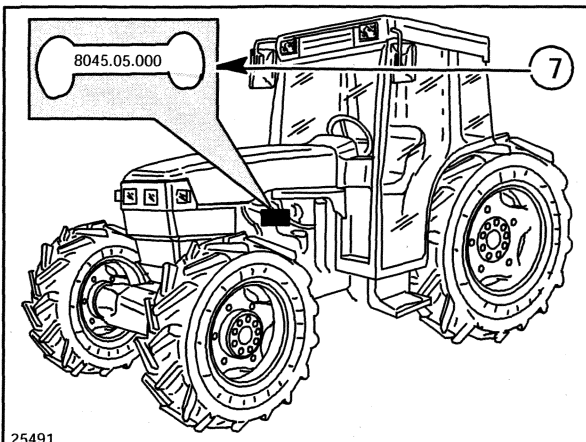
Right-hand side of the tractor - Fig. 2

4. Frame and engine identification plate for tractors with safety roll bars (see fig. 5).
5. Safety roll bar identification plate number see fig. 5
6. Frame number (see fig. 6).



2

COLORS	
COLOR	INITIAL
BLACK (A)	TA/20
BLACK (B)	M - 1724 - P
DARK GREY	RAL-7024
GREY	RAL-7015
WHITE	TA/21
BLEU	M 1639 - A



Engine identification data - Fig. 3

The engine identification data (7) is stamped on the left-hand side of the engine block. Make a note of the data in the space below:

3

Thank you so much for reading.
Please click the “Buy Now!”
button below to download the
complete manual.



After you pay.

You can download the most
perfect and complete manual in
the world immediately.

Our support email:

ebooklibonline@outlook.com