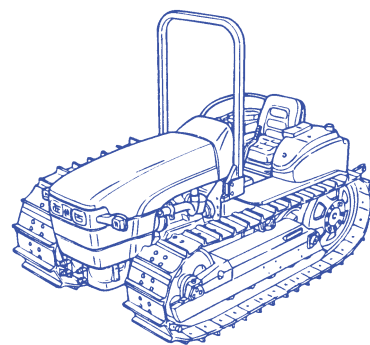


NEW HOLLAND
TK76
TK85
TK85M

86626574 5/01
603.64.491.10

OPERATOR'S MANUAL



NEW HOLLAND

COLOURS	
COLOUR	INITIAL
BLACK	TA/20
DARK GREY	RAL-7024
GREY	RAL-7015
WHITE	TA/21
NEW HOLLAND BLUE	86593620

NEW HOLLAND constantly improves its product range and, therefore, reserve the right to modify products whenever necessary, without any obligation to apply these improvements and modifications to vehicles that were previously sold.

All data given in this manual is subject to production variations. Dimensions and weights are provided with approximate values and the tractor fittings shown in the illustrations may not correspond with standard models. For precise information on specific tractor models and versions, please contact your NEW HOLLAND dealer.

CONTENTS

Page

General Information

To the user	iii
Tractor identification	iv
Important ecological considerations	v
Always work safely	vi
Working safely	vii
Safety decals	xiii
Tractor noise level information sheet	xvii

Section 1 - Controls, Instruments and Operation

General notes, commands and instruments	1-1
Controls and instruments	1-2
Control panel	1-3
Checks before using the tractor	1-4

Section 2 Operation

Operation	2-1
Before using the tractor	2-1
Instrument panel	2-5
Steering clutches and brakes	2-9
Central clutch	2-10
Transmission with range gear and shuttle (8F+8R)	2-11
Fold down roll bar	2-12
Power take-off	2-13
Hydraulic lift	2-16
Implement connection	2-19
Implement connection points	2-21
Towing equipment	2-22
Remote control valves	2-25
Seat	2-28
Ballast	2-29

Section 3 Lubrication and maintenance

Lubrication and maintenance	3-1
Introduction	3-1
Tractor refuelling	3-2
Lubrication and maintenance table	3-4
Flexible maintenance	3-6
Instrument panel warning lights	3-11
Every 50 hours of work	3-12
Every 300 hours of work	3-14
Every 900 hours of work	3-18
Every 1200 hours of work or every year	3-18
Every 1200 hours of work or every 2 years	3-20
General maintenance	3-23

Section 4 Specifications

Troubleshooting	4-1
-----------------------	-----

Section 5 Specifications

Specifications and Data	5-1
-------------------------------	-----

Section 6

Alphabetical index	6-1
--------------------------	-----

TO THE OWNER

GENERAL GUIDELINES

This Use and Maintenance Manual provides a guide for the user with regard to running-in, use and maintenance of the tractor.

Read this manual carefully and keep in a convenient place for future reference. Do not hesitate to contact your local dealer for any queries concerning your tractor. The dealer can provide skilled personnel, trained by the manufacturer, original service parts and all tools and equipment necessary for your service requirements.

The tractor is designed as a power generator and drive-propulsion unit for use in normal and traditional agricultural conditions.

The tractor is also designed to provide maximum performance, economic running and easy use over a wide range of operations. Prior to delivery, all machines are carefully inspected (by both the Manufacturer and your local authorised dealer), to make sure that they reach the user in perfect condition. To maintain the tractor in this condition and ensure trouble-free operation, the routine maintenance described in Section 3 of this manual must be carried out at the specified intervals.

CLEANING THE TRACTOR

■ Never stand too close to the tractor or direct the water jet on electrical components, seals or intake openings, etc..

■ Never direct jets of cold water at the hot engine or exhaust. See also Section 3 (Recommendations for bodywork maintenance).

SAFETY

Safety precautions for the operator and bystanders are shown on page vii to xiii inclusive. Read the

safety instructions and follow recommendations and hints **before** starting to use the tractor.

SERVICE AFTER FIRST 50 HOURS WORK

The operations required for the first service are shown at the end of the Manual, immediately prior to the index.

After the first 50 hours of use, return to the dealer with your tractor and this Manual in order to carry out the Manufacturer's checks and to fill in the certificates included on pages 1 and 3). The first sheet (page 1) must be compiled on completion of the service and held by the dealer. The second sheet (page 3) must be kept in the Manual for documentation and reference purposes. **Check that both copies are signed by both yourself and the dealer.**

SPARE PARTS

"Non-original" spare parts have not been tested or authorised by the Manufacturer. Installment and/or use of such products may adversely affect the tractor's design specifications, thereby compromising operational safety. The manufacturer cannot be held responsible for any damage resulting from the use of "non-original" spare parts.

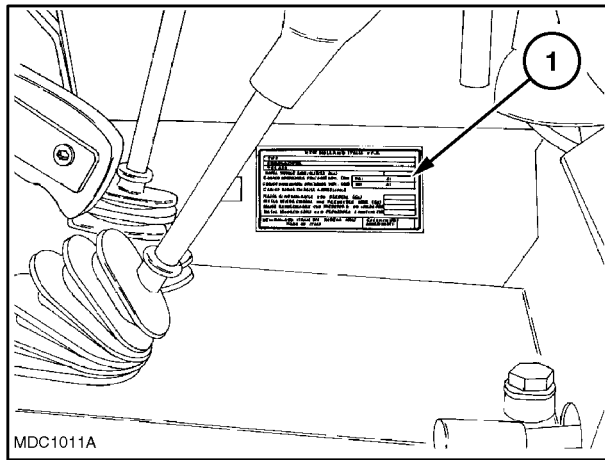
No modifications may be made to the tractor without written authorisation from the Manufacturer

WARRANTY

The tractor is guaranteed in accordance with current legislation in your country and in line with contractual agreements reached with the dealer at the time of sale. However, the warranty is no longer valid if the rules and instructions for the use and maintenance of the tractor, described in this Manual, are not observed.

TRACTOR IDENTIFICATION DATA

Serial numbers identify the tractor and its main components. The identification data must be supplied by the dealer for requests for spare parts or service operations. Identification data is of fundamental importance in the event of theft of the tractor. The location of the various identification data is shown below.

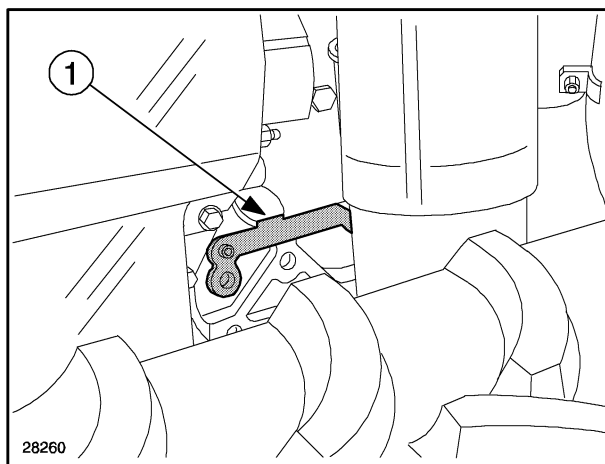


1

Frame and engine type identification

- Fig. 1

The data is shown on the plate (1) on the right-hand side; note the data in the space below:

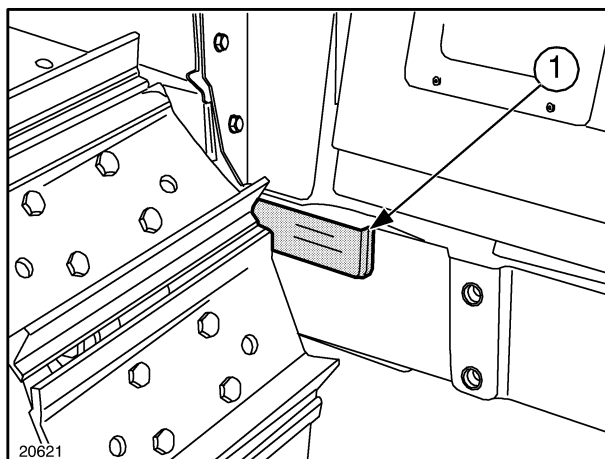


2

Engine type and number identification

- Fig. 2

The data is shown on engine block (1) located on the left-hand side of the engine, near the alternator. Make a note of the data in the space below:



3

Frame type and number identification

- Fig. 3

The serial number and frame type are shown on a plate (1) located on the right-hand side of the frame. Make a note of the data in the space below:

IMPORTANT ECOLOGICAL CONSIDERATIONS

Soil, air and water are essential elements for agriculture and for life in general. If local legislation does not control the treatment of certain substances, the production of which is necessitated by advanced technologies, products derived from chemical and petrochemical products must be used and disposed of according to the rules of common sense.

The following recommendations may be of help:

■ Find out what the relevant legislation in your country stipulates.

■ Ask your suppliers of lubricants, oils, fuels, anti-freeze, detergents, etc.. for information on the effects of these products on humans and the environment and for instructions concerning their use, storage and disposal. In many cases, local agricultural consultants will be able to provide assistance.

SUGGESTIONS

1. Avoid using unsuitable, pressurised filling systems or fuel cans when filling tanks, as these may cause considerable spillage and leakage of liquids.

2. As a general rule, do not allow liquid fuels, lubricants, acids, solvents, etc., to come into contact with the skin. The majority of these products contain substances that are potential health hazards.

3. Modern lubricants contain additives. Do not burn contaminated fuel oils and/or oils used in conventional heating systems.

4. Avoid spillage when transferring used engine cooling liquids, engine and transmission lubricants, hydraulic oils, brake fluids, etc.. Never mix used brake oil with fuel oil, or fuel oil with lubricants. Store safely until suitable disposal can be arranged according to national legislation or local regulations.

5. Modern anti-freeze liquids and solutions, e.g. anti-freeze and other additives, must be replaced every two years. They must not be left to be absorbed into the ground, but must be collected and disposed of in a suitable manner.

6. Any leakage or defect in the engine cooling or hydraulic systems must be repaired immediately.

7. When welding, make sure that hoses are properly protected as sparks or molten material may puncture or weaken the tubes and sleeves, resulting in leakage of oil, cooling liquid, etc..

8. Do not adjust the setting of the fuel delivery system as this will alter the emission of exhaust fumes.

NOTE: *The engines installed on the tractors comply with anti-pollution legislation.*

ALWAYS WORK SAFELY



This warning symbol points out important messages concerning your safety.

Read the following safety regulations carefully and follow the recommendations in order to avoid potential hazards and safeguard your health and safety.

In this manual the symbol is accompanied by the following key-words:

CAUTION - Indicates a potentially hazardous situation that, if not avoided, may result in minor or moderate injury. It may also be used to alert against unsafe practices.

WARNING - Indicates a potentially hazardous situation that, if not avoided, could result in death or serious injury, and includes hazards that are exposed when guards are removed. It may also be used to alert against unsafe practices

DANGER - Indicates an imminently hazardous situation that, if not avoided, will result in death or serious injury. This signal word is to be limited to the most extreme situation, typically for machine components that, for functional purposes, cannot be guarded.

Failure to observe the instructions preceded by the aforementioned key words (**CAUTION** and **DANGER**) may result in severe or fatal injury to the persons involved.

Furthermore, this manual also contains instructions in italics preceded by the terms **NOTE** and **WARNING**, with the following relevance in relation to machine protection:

NOTE - Underlines the correct procedure or technique to be followed by the operator.

IMPORTANT WARNINGS

The machine is designed and produced exclusively for agricultural use.

All other use will be considered to be contrary to the use specified by NEW HOLLAND, who cannot be held liable for damage to property or the machine, or for personal injuries which may result.

Persons who risk improper use will therefore assume the responsibility for any consequences arising from such use.

Compliance with the instructions for use, maintenance and repairs described in this manual, are the essential preconditions for the use specified by NEW HOLLAND.

The machine must only be used, serviced or repaired by personnel trained in the relevant working methods and safety regulations and who have been authorised to work on the machine.

The user must also observe the rules concerning general safety and accident prevention, including the Highway Code when driving on public highways.

Any arbitrary modifications made to this machine will release NEW HOLLAND from any liability resulting from damage or injury.

NEW HOLLAND and all distribution organisations, inclusive of, but not restricted to, national, regional or local distributors, cannot be held liable for damage resulting from the malfunction of parts and/or components not approved by NEW HOLLAND.

Under no circumstances will a guarantee be issued for products made or sold by NEW HOLLAND that are damaged as a result of the malfunction of parts and/or components not approved by NEW HOLLAND.

WORKING SAFELY

GENERAL INFORMATION

■ During the manufacturing of this tractor, every step has been taken to ensure safe operation. However, the best way to avoid accidents is to exercise caution at all times. Once the accident has already happened it is too late to remember what steps should have been taken.

■ Read this manual carefully before starting, using, carrying out maintenance, refuelling or performing any other type of operation on the tractor.

■ The time spent reading this manual will allow you to get to know your tractor, thereby saving time and effort. This will also help prevent accidents from taking place.

■ Read all the safety decals on the machine and follow the instructions thereon before starting, operating, refuelling or carrying out maintenance on the machine. Promptly replace any decals that are damaged, lost or illegible.

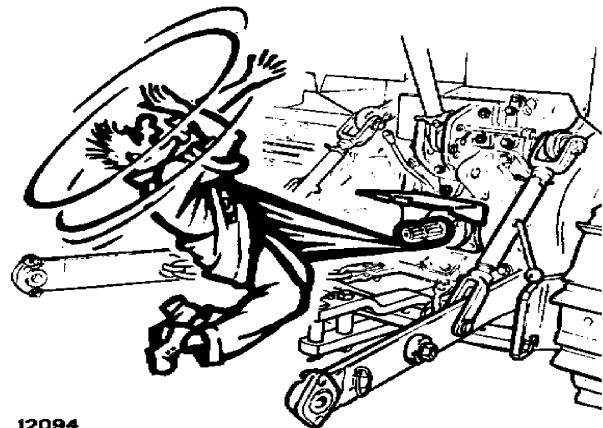
Clean the decals if they are covered by mud or debris.

■ Remember that the tractor is exclusively designed for agricultural use. Any other use will require prior authorisation from NEW HOLLAND.

■ It is advisable to keep a first aid kit on hand.

■ The tractor must only be used by responsible personnel, trained in tractor use and authorised to operate the machine.

■ Do not alter the injection system calibration in an attempt to increase maximum engine speed.



12094

■ Do not wear loose clothing that may be trapped in moving parts.

Check that all rotating parts connected to the power take-off are correctly protected.

SAFETY REGULATIONS

■ Do not alter the calibration of the pressure relief valves in the various hydraulic circuits (hydraulic lift, auxiliary control valves, etc.).

■ Avoid using the tractor in unsuitable physical conditions, stop work instead.

■ Enter and leave the tractor using the steps and handles provided. Keep these fittings free of mud and debris.

■ Always operate with the roll bar correctly and securely fitted on the tractor: periodically check that the fittings are not loose and that all parts of the structure are free from any damage and deformation. Do not modify the roll bar by welding parts, drilling holes, etc., as this could adversely affect the rigidity of the structure.

STARTING THE TRACTOR

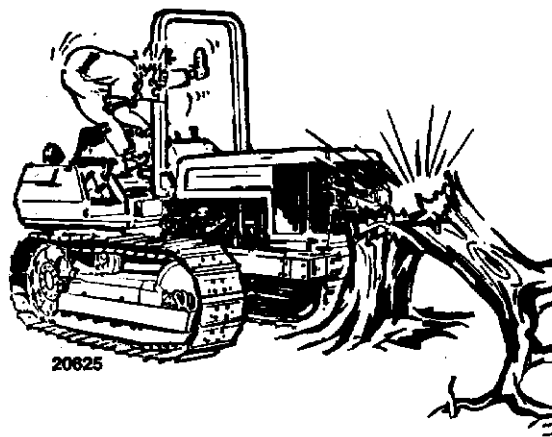
■ Before starting the engine, check that the hand-brake is on and that the gears and power take-off are disengaged, even if the tractor is fitted with a start-up safety device. Never disconnect the start-up safety switch. If the switch does not work correctly, contact your local dealer for eventual repair operations.

■ Before starting the engine, make sure that all attached implements are lowered to the ground.

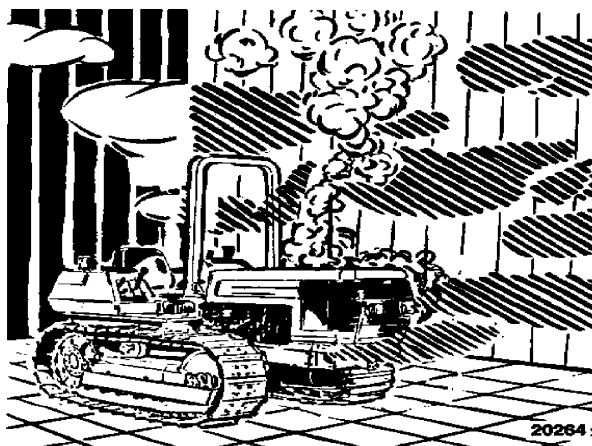
■ Before starting the engine, check that all covers and guards are correctly in position (roll bar, bonnet

side panels, power take-off guard, front axle transmission shaft cover, etc.).

■ Never start or maneuver the tractor unless seated in the driving position.

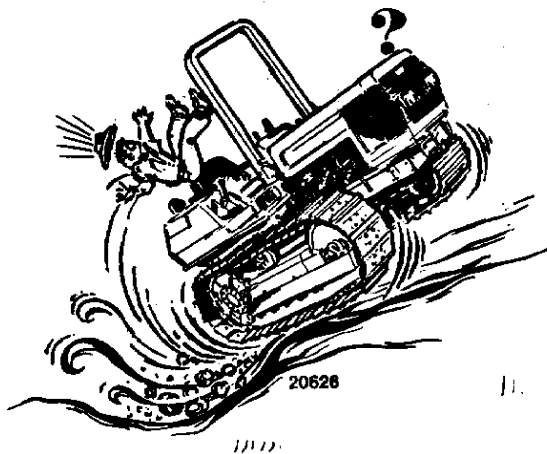


■ Before moving the tractor, always check that the area is free of persons or obstacles.

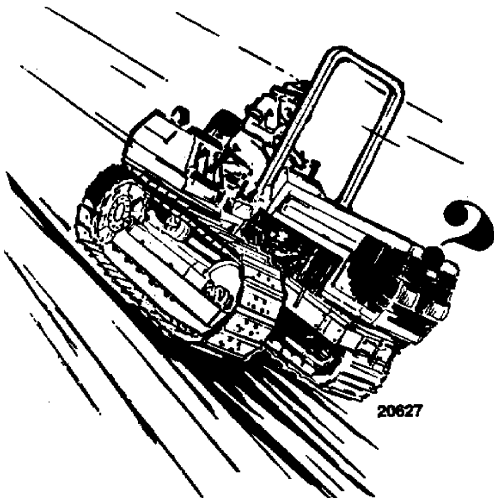


■ Never run the engine in a closed space without ensuring adequate ventilation. Exhaust fumes are damaging to the health and can be lethal.

USING THE TRACTOR



■ Engage the central clutch slowly: if engaged too quickly, especially when the tractor is getting out of a hole, ditch or operating on muddy ground or steep slopes, the tractor may overturn. Release the central clutch immediately if the front part of the tracks start to lift.



■ When travelling downhill, keep the tractor in gear. Never release the central clutch and never leave the gears in neutral.

■ When the tractor is moving, the operator must remain correctly seated in the driving position.

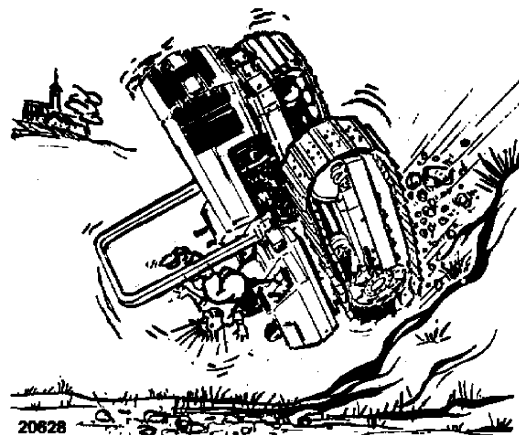
■ Never get on or off the tractor while in movement.

■ When using the brakes, press the pedals down slowly and at the same time, after having disengaged the central clutch.

■ Avoid turning at high speeds.

■ Always use the tractor at a speed that will guarantee safe operation on the type of land being worked. When working on uneven ground, use maximum care to ensure proper stability.

■ If you have to work with the tractor on a gradient, for example on hillsides, drive at moderate speed especially when taking curves.



SAFETY REGULATIONS

■ Proceed with maximum caution when working with the tracks near the edge of ditches or slopes.

■ When driving, do not rest your feet on the brake pedals.



■ Never carry passengers.

■ Avoid excessive wear on the brakes by using engine braking.

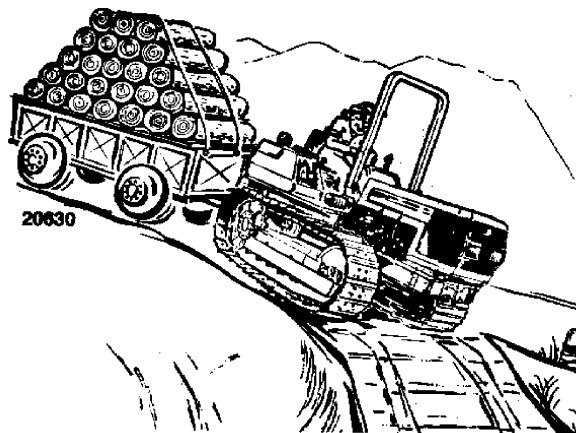
TOWING AND TRANSPORT

■ To guarantee tractor stability when moving, adjust the hitching device according to the trailer or implement to be used (see Caution on page 20 Section 2).

■ Drive slowly when towing extremely heavy loads.

■ For your own safety, do not tow trailers that are not fitted with an independent braking system.

■ If the tractor is used to tow heavy loads, always use the hitching device and never hitch loads onto the lower arms or the top link of the three-point linkage. This may result in tipping or overturning.



■ On steep slopes with a rear load pushing the tractor, steering maneuver must be reversed; e.g.: in order to turn to the right, disengage the left-hand clutch and vice versa.

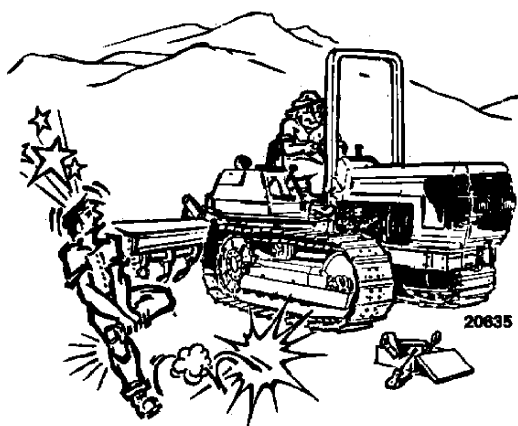
USING IMPLEMENTS AND AGRICULTURAL MACHINERY

■ Do not connect implements or machinery that require more power than can be generated by your tractor model.

■ Never negotiate sharp curves with the power take-off under a heavy load; this may damage the universal joints on the transmission shaft connected to the power take-off.

■ Never stand between the reversing tractor and the implement when hitching.

■ When using implements that require the tractor to be stationary with the engine running, keep the gear levers in the neutral position, the central clutch lever disengaged (see page 10, Section 2) and apply the handbrake.



■ Do not operate machines connected to the power take-off without first ensuring that the operating range of the machine is free of bystanders. Also check that all rotating parts connected to the power take-off shaft are correctly protected.

STOPPING THE TRACTOR

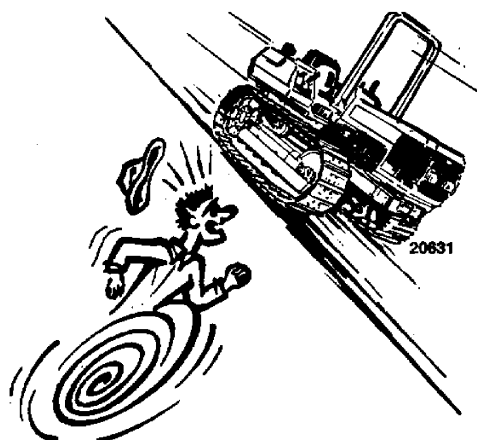
■ When the tractor is stationary, never leave connected implements in the raised position. All implements must be lowered before stopping the engine.

■ Before leaving the driving position, disengage the central clutch, move the gear lever to the neutral position, disengage the power take-off, apply the handbrake, stop the engine and engage the central

clutch.

Always remove the ignition key from the dashboard when leaving the tractor unattended.

■ Park on flat surfaces, where possible, put the tractor into gear and apply the handbrake. On slopes, in addition to applying the handbrake, put the tractor in first gear when facing downhill. As an additional safety measure, use wheel chocks; **this procedure is compulsory when parking with a trailer hitched.**

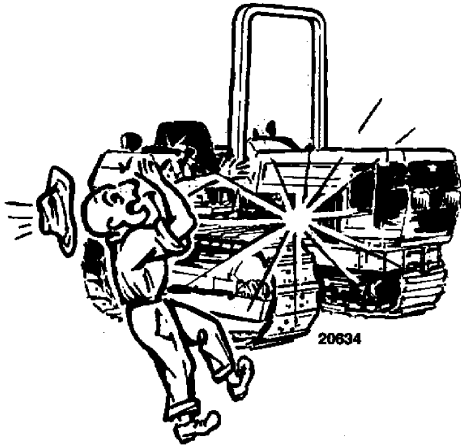


TRACTOR MAINTENANCE

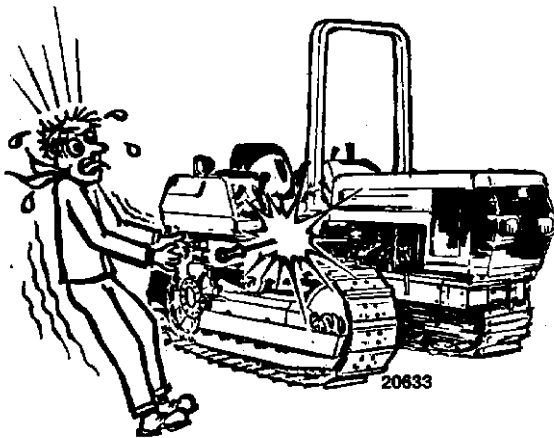
CAUTION: In this manual, some illustrations show panels or covers removed in order to facilitate explanations. Never use the tractor without the panels or guards in place.

■ Before removing any hydraulic tubing, check that the system is not pressurised.

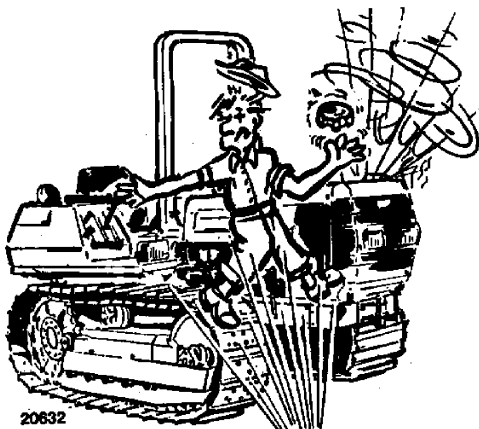
SAFETY REGULATIONS



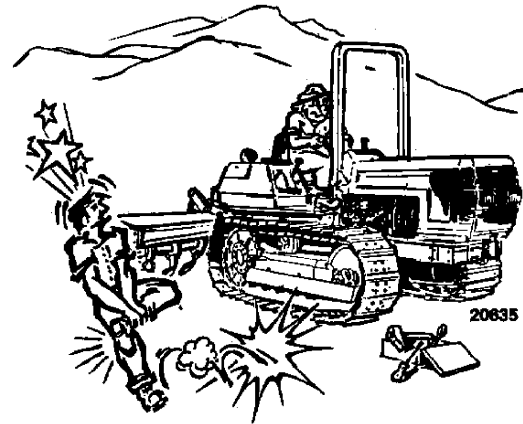
■ Leaks of pressurised oil can cause serious injuries. When looking for leaks use the appropriate safety equipment: screens, safety glasses and gloves.



■ Before touching any electrical components, disconnect the ground lead from the battery.



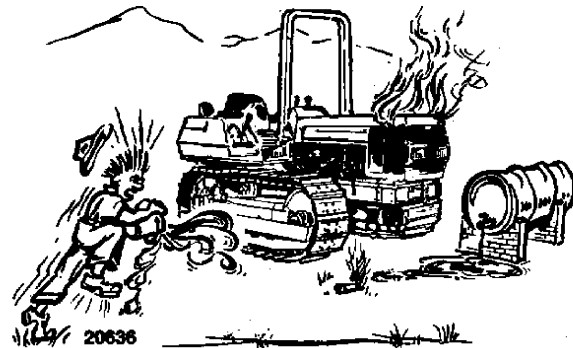
■ Only remove the radiator cap after the engine has been allowed to cool. With the engine switched off, use a cloth to slowly unscrew the cap and release the pressure before completely removing the cap.



■ Before inspecting, cleaning or carrying out maintenance on the tractor (or any implement connected to the tractor), always ensure that the engine is switched off, the gears are in neutral, the brakes are on, the power take-off is disengaged and that all moving parts are stationary.

■ Fuel can be dangerous. Never fill up with fuel with the engine running or hot, near a open flame or if you are smoking.

■ Do not fill up the fuel tank completely if the tractor is to work in extremely sunny conditions, as the fuel may expand and escape. If this occurs, dry up the spillage immediately.



■ Always keep a fire extinguisher at hand.

Thank you so much for reading.
Please click the “Buy Now!”
button below to download the
complete manual.



After you pay.

You can download the most
perfect and complete manual in
the world immediately.

Our support email:

ebooklibonline@outlook.com