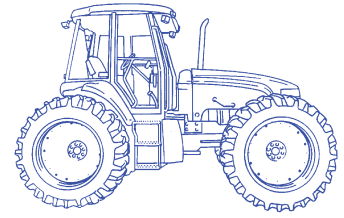


NEW HOLLAND
Supplement to
TV140
Operator's
Manual
#86562957

86636866 12/01

OPERATOR'S MANUAL



NEW HOLLAND

CONTENTS

INTRODUCTION	Page 2
SAFETY DECALS - BATTERY RELOCATION	
New Decal (Affects pages 0-16 and 0-17)	Page 3
OPERATION - ELECTRICAL SYSTEM UPGRADE	
Ignition Switch (Does not affect existing manual)	Page 5
Warning Light Bar (Affects page 2-20)	Page 5
Control Pad (Affects pages 2-22 and 2-26)	Page 6
Hours (Service Elapsed) Switch (Affects pages 2-27 to 2-29)	Page 7
Calibrating the Electronic Instrument Control System (Affects pages 2-30 through 2-43)	Page 9
Engine Coolant Temperature High Warning (Affects page 2-47)	Page 17
Fuel Level Low Warning (Affects page 2-50)	Page 18
Three Point Hitch (Affects pages 2-111 through 2-119)	Page 19
MAINTENANCE - ELECTRICAL SYSTEM UPGRADE	
Brake Fluid (Affects pages 3-17 and 3-54)	Page 29
MAINTENANCE - ENGINE OVERHEAT	
Reservoir Sight Gauge and Filler Tube (Affects pages 3-16 and 3-38)	Page 29
SPECIFICATIONS - ENGINE OVERHEAT	
Hydraulic Oil Reservoir (Affects pages 5-4, 5-5, 5-7)	Page 31

NOTE: Items with “Affects” after them [**EXAMPLE:** “(Affects pages 2-27 to 2-29)”] indicate that the original Operator’s Manual 86562957 should be noted on those pages to refer to this supplement for information on proper operation of the tractor.

INTRODUCTION

This Operator's Manual Supplement is being provided for tractors that had functional changes affecting the instructions in the original Operator's Manual 86562957, printed date of 3/98.

This supplement refers ONLY to tractors between Serial Numbers D202851 - D204598 that received:

Program 570 - Battery Relocation
Campaign 571 - Engine Overheat
Campaign 801 - Electrical System Upgrade

Purpose - use this manual to:

- Understand how a campaign or program improved certain tractor functions.
- Compare the differences between the original manual and the tractor "post-campaign," and edit the manual accordingly.
- Disregard information in the original manual that no longer applies.
- Revisit certain important operator warnings and instructions.

SAFETY DECALS

NEW DECAL

Program 570 (Affects pages 0-16 and 0-17)

A new decal was necessary after Battery Relocation.

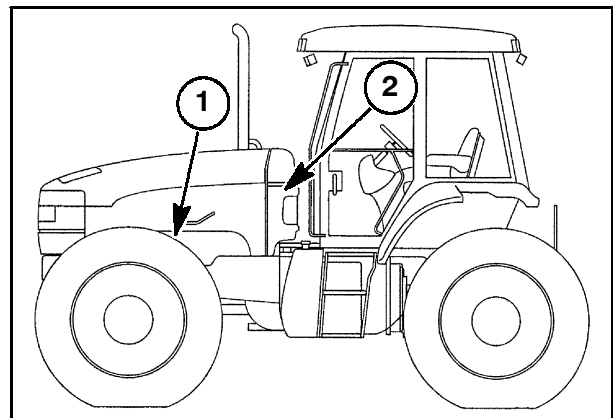
Caution: This compartment contains electrical components and is exposed to high temperatures. Do Not use for storage. Personal injury or other damage could occur.

Part #86026423



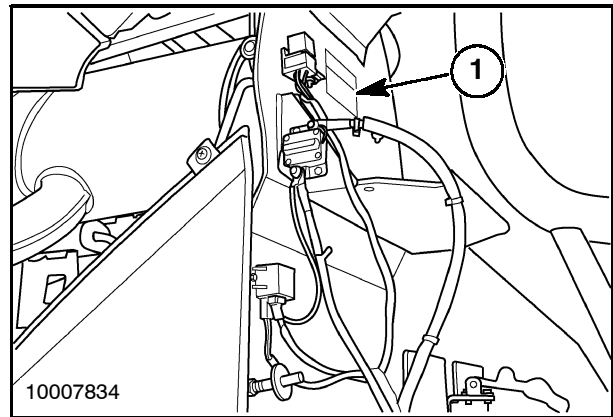
1

A new safety decal is required because the batteries were moved to the left side of the engine end frame, 1, from the rear hood area, 2. The decal is located in the rear hood compartment.



2

The decal, 1, is placed in the upper half of the old battery compartment.



3

SECTION 1 - GENERAL INFORMATION

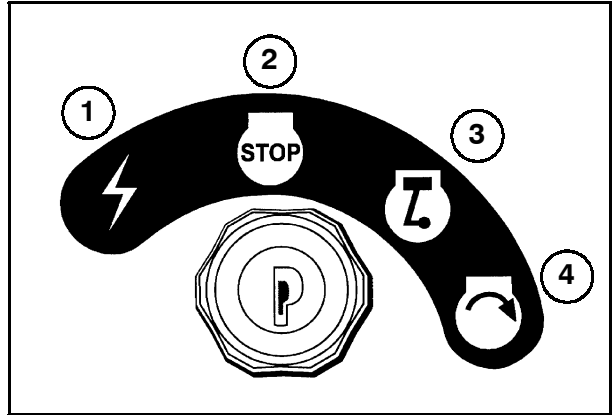
SECTION 2

OPERATION

IGNITION SWITCH

Campaign 801 (Does not affect existing manual)

When starting the engine, the ignition switch can be turned straight to "Engine Start", Position 4, without pausing at the "Run" position. The engine should start immediately.



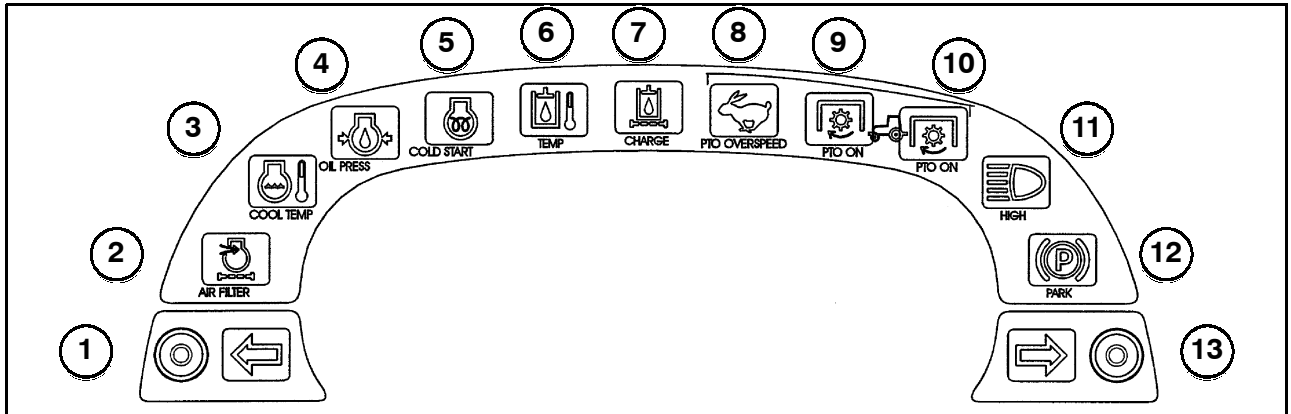
1

WARNING LIGHT BAR

Campaign 801 (Affects page 2-20)

The Engine Coolant Temperature warning light, Item #3, illuminates at a different temperature.

3. **Engine Coolant Temperature**, illuminates when the engine coolant reaches 118° C (245° F), indicating an engine overheat concern exists.



2

CONTROL PAD

Campaign 801 (Affects pages 2-22 and 2-26)

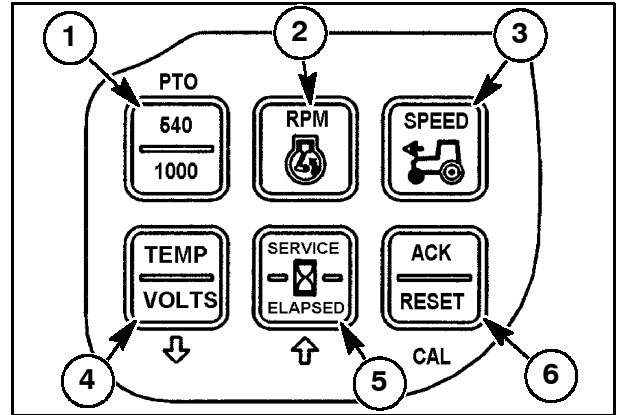
The “TEMP/VOLTS” switch no longer toggles to display Engine Coolant Temperature.

The electronic monitor control pad uses six switches to select different displays on the monitor, and to acknowledge information provided by the Electronic Instrument Control System.

- 1 PTO switch
- 2 Engine RPM switch
- 3 Tractor ground speed switch
- 4 System voltage switch

NOTE: The “TEMP” option no longer functions.

- 5 Hour switch
- 6 Acknowledge/reset switch



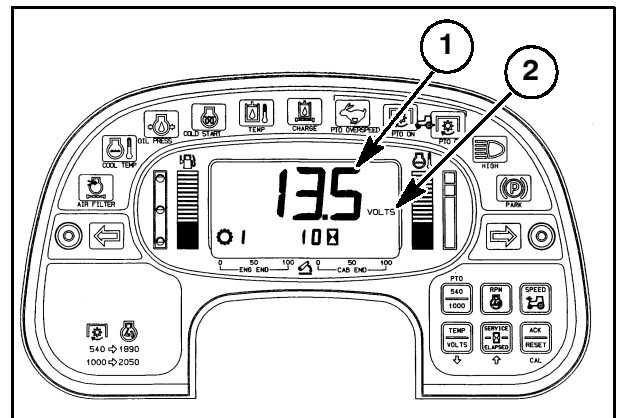
3

System Voltage Switch

Pressing and releasing the switch will toggle to the voltage display. The upper area of the monitor will display the system voltage, 1, to the nearest tenth of a volt and the “VOLTS” symbol, 2, to the right of the voltage reading. The reading can be as much as one-and-a-half volts higher with the engine running than with the engine off.

NOTE: The “TEMP” function of this switch no longer displays coolant temperature.

NOTE: The System Voltage Switch is also the “Down” arrow during calibration.



4

HOURS (SERVICE ELAPSED) SWITCH

Campaign 801 (Affects pages 2-27 through 2-29)

The hours switch functions changed as described below.

Pressing and releasing the “SERVICE/ELAPSED” switch, 1, with the ignition key switch in the “ON” position will allow the operator to select between four different displays in the lower area of the monitor.

The items displayed in order are:

1. Total Engine Hours
2. Elapsed (Trip) Hours
3. Service 1 Hours
4. Service 2 Hours

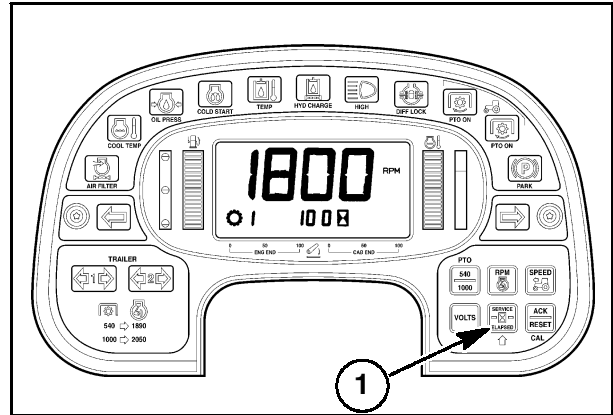
NOTE: Item 1, is always active and items 2, 3, and 4 may be deactivated. Follow the calibration procedure to activate items 2, 3, and 4 or any combination, one only, two only, or all three.

NOTE: The Service/Elapsed switch is also used as a “UP” arrow during the CALIBRATING THE ELECTRONIC INSTRUMENT CONTROL SYSTEM.

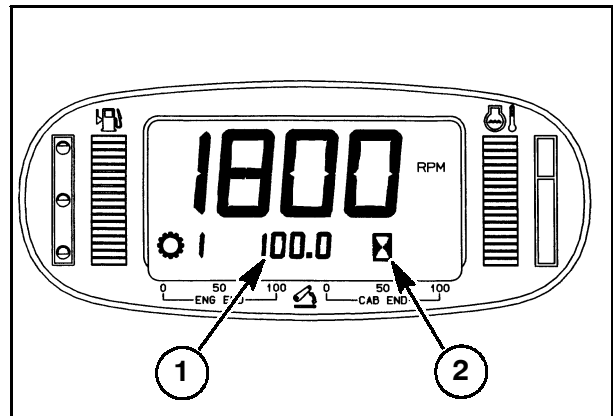
The Total Engine Hours will be shown in the lower area of the monitor whenever the tractor is initially started or whenever the tractor accumulated hours display is selected using the “SERVICE/ELAPSED” switch.

The second display that can be selected with the “SERVICE/ELAPSED” switch is the tractor Elapsed (Trip) hours, which can be used as a re-settable hour counter.

This function is also displayed in the lower area of the monitor, 1, along with the hourglass symbol, 2, next to it.



5



6

Thank you so much for reading.
Please click the “Buy Now!”
button below to download the
complete manual.



After you pay.

You can download the most
perfect and complete manual in
the world immediately.

Our support email:

ebooklibonline@outlook.com