

NEW HOLLAND

**Emission
Controlled**

5610S

Serial Number 308980M and Above

6610S

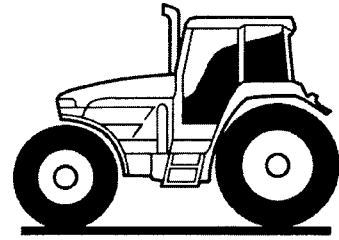
Serial Number 359715M and Above

7610S

Serial Number 256316M and Above

86837677 12/01
82981440

OPERATOR'S MANUAL



NEW HOLLAND

Reprinted

TO THE OWNER:

The warranty coverage that is extended to your tractor is explained in the Warranty and Limitation of Liability form. Your dealer will provide you with a copy of the warranty and retain a copy which you have signed. After you read the warranty, ask your dealer to explain any points that you may not understand.

This tractor was designed to power and propel itself. It is intended for use in normal and customary agricultural applications.

Do not modify or alter or permit anyone else to modify or alter this tractor or any of its components or any tractor function without first consulting an authorized New Holland dealer. If you have any questions regarding tractor modifications, contact New Holland North America, Inc., 500 Diller Ave., New Holland, PA 17557.

Your safety and the safety of those around you depends upon the care and good judgment you use while operating this equipment. Read the safety precautions carefully.

After you have operated the tractor for 50 hours, take your tractor and this manual to your selling dealer. He will perform the factory recommended 50-hour service. You will be responsible for the cost of lubricants, fluids, filters and other items replaced as part of normal maintenance. Prior to taking the tractor to your selling dealer for service, it is recommended that you contact them to determine any other charges for which you may be responsible.

All data given in this book is subject to production variations. Dimensions and weights are approximate only and the illustrations do not necessarily show tractors in standard condition. For exact information about any particular tractor please consult your New Holland dealer.



CAUTION: THIS SYMBOL IS USED THROUGHOUT THIS BOOK WHENEVER PERSONAL SAFETY IS INVOLVED. TAKE TIME TO READ AND FOLLOW THE INSTRUCTIONS. BE CAREFUL!

CAUTION: PICTURES IN THIS MANUAL MAY SHOW PROTECTIVE SHIELDING OPEN OR REMOVED TO BETTER ILLUSTRATE A PARTICULAR FEATURE OR ADJUSTMENT.

BE CERTAIN, HOWEVER, TO CLOSE OR REPLACE ALL SHIELDING BEFORE OPERATING THE MACHINE.

IMPROVEMENTS

New Holland North America, Inc. is continually striving to improve its products. We reserve the right to make improvements or changes when it becomes practical and possible to do so, without incurring any obligation to make changes or additions to the equipment sold previously.



WARRANTY AND LIMITATION OF LIABILITY - AGRICULTURAL PRODUCTS

COVERAGE PROVIDED

New Holland North America, Inc. or New Holland Canada, Ltd., hereinafter called "Company" warrants to the retail purchaser of each new Product (as listed below) that the Selling Dealer will repair or replace any part thereof found to be defective in materials or workmanship within the following periods. This warranty is for the benefit of the original or subsequent purchaser when purchased from an authorized New Holland dealer.

BASIC WARRANTY

Table with 2 columns: Product and Warranty Period (whichever comes first). Rows include Harvesting, Materials Handling Equipment and Implements (12 Months), Tractors 1000 thru 8000 Series (12 Months), Tractors 8030 and 8070 Series (36 Months or 3000 Hours), etc.

**The components covered by extended warranty consists of the following: ENGINE - The rocker arm cover, cylinder head, engine block, crankcase pan and timing gear cover of the engine, and the parts fully enclosed within these units.

TRANSMISSION AND REAR AXLE (Tractors Only) - The clutch housing, transmission case, dual power housing, differential housing, final drive housings, transfer case, front wheel drive housing, and parts fully enclosed within these housings, including the drive axles. Includes PTO clutch and PTO drop box, hydrostatic pump/motor and high pressure hoses on the Model 9030 tractors.

LIMITATIONS, INCLUDING DISCLAIMER OF IMPLIED WARRANTIES AND CONSEQUENTIAL DAMAGES

This warranty gives you specific legal rights and you may also have other rights which vary, depending on state or provincial laws.

New Holland North America, Inc. or New Holland Canada, Ltd. does not authorize any person or dealer to create for it any other obligation or liability in connection with these products. TO THE EXTENT ALLOWED BY LAW, ANY IMPLIED WARRANTY OF MERCHANTABILITY OR FITNESS APPLICABLE TO THIS PRODUCT IS LIMITED TO THE STATED DURATION OF THIS WRITTEN WARRANTY.

Some states and provinces do not allow limitations on how long an implied warranty will last or the exclusion or limitation of incidental or consequential damages, so the above limitations or exclusions may not apply to you.

The remedy of repair or replacement of a defective part during the warranty period herein specified shall be the purchaser's exclusive remedy.

EXTENDED SERVICE PLAN (ESP)

When offered by the Company, the option to purchase an Extended Service Plan has been explained and:

- I accept and have signed the completed registration form
I decline the Extended Service Plan
I will consider within 180 days (12 months on 8070 series)

PROTECTIVE EQUIPMENT

Rollover protective structure (ROPS) and seat belts are provided as standard equipment on all New Holland agricultural tractors and we strongly recommend their use. Customers who elect to remove or not use this protection do so at their own risk.

- I acknowledge the existence of OSHA regulations pertaining to ROPS.
A PTO master shield, if applicable, has been installed on the machine.
The correct Operator's Manual has been furnished.
Safety precautions were explained to me by the Selling Dealer.

ACKNOWLEDGEMENT/WARRANTY TRANSFER

The blank spaces under "Protective Equipment" have been filled in and are correct, and I acknowledge that I have read and I accept this Warranty and Limitation of Liability.

Form with fields for Purchaser and Dealer information: Name, Address, City, State, Zip, Model, Serial No., Attachment Model, SN, Retail Date, Extended Service Plan Expires on, Signature, Date.

New Holland Warranty Detail*

The warranty period will begin on date of original retail sale or date of original use, whichever is earlier.

- The obligation of Company to the purchaser under this warranty is limited to the repair or replacement of defective parts by an authorized New Holland dealer and will be done free of charge for both parts and labor using genuine New Holland replacement parts. Repair or replacement in accordance with this warranty shall constitute fulfillment of all liabilities of Company and the Selling Dealer in respect to such Products.
- Repairs or replacements will be performed by the Selling Dealer, following delivery of the Product by the purchaser to the Dealer's place of business. When the purchaser has moved a long distance from the Selling Dealer, or the Selling Dealer is no longer in business, any New Holland dealer authorized to sell and service the described Products may perform the repair at its dealership.
- The Selling Dealer shall review these warranty provisions with the purchaser prior to retail sale, secure his acknowledgement of delivery of this warranty and record the date of original retail sale or date of original use.
- To obtain warranty service, the purchaser must (1) report the product defect to an authorized New Holland dealer and request repair within the applicable warranty term and (2) present evidence of the warranty start date.

WHAT IS NOT COVERED BY THE WARRANTY?

This warranty shall NOT apply under the following conditions:

- (i) With respect to vendor warranty items such as Allison transmissions and Deutz, Cummins and Caterpillar engines, or tires, tubes, and attachments which shall be warranted by their manufacturer, or local representative thereof.
- (ii) If the unit has been subject to misapplication, abuse, misuse, negligence of proper maintenance or other negligence, fire or other accident.
- (iii) If parts or attachments other than those made or marketed by New Holland North America, Inc. or New Holland Canada, Ltd., have been used in connection with the unit, and in the sole judgment of Company such use affects its performance, stability or reliability.
- (iv) If the unit has been altered or repaired outside of a New Holland dealership in a manner which, in the sole judgment of Company, affects its performance, stability or reliability.
- (v) Batteries are covered by a separate pro rata adjustment warranty. The pro-rata plan covers the battery fully for the basic product warranty period as indicated, with any remaining warranty pro-rated according to the months of service.
- (vi) The purchaser shall be responsible for payment of dealer travel time to the machine or to deliver the machine to the dealer's service shop for repair. New Holland warranty does not cover delivery charges or travel time.
- (vii) The Company shall have no liability for used equipment sold beyond the specified coverage period.
- (viii) No warranty shall apply to damage resulting from accident or damage caused by environment (such as exposure to corrosive material). The Company shall not be responsible for rental equipment used to replace the equipment being repaired.
- (ix) This warranty shall NOT apply to normal maintenance services (such as tune-ups, fuel injection system cleaning or wheel, brake and clutch adjustments), to normal replacement of service items (such as filters and brake or clutch linings), or to normal deterioration due to use or exposure (such as belts and exterior finish). New Holland shall not be responsible for normal replacement parts such as cutting knives, chains, belts, clutches, filters, oil, or other parts which are worn out, unless they are determined to be defective in material or workmanship.
- (x) This warranty shall NOT apply to any New Holland Product which is retailed or distributed by anyone other than New Holland North America, Inc. or New Holland Canada, Ltd., through its authorized dealers. This warranty shall NOT apply to any Product which is normally operated outside of the United States, and/or Canada.
- (xi) This warranty shall NOT apply if the purchaser, insurance company, or any other entity or individual acting on behalf of the purchaser seeks reimbursement for the dollar value of the repair(s) or replacement(s) covered under this warranty.
- (xii) If the injection pump has been set for fuel delivery above New Holland specifications.

RIGHT TO MAKE DESIGN CHANGES

Company reserves the right to make changes in the design and other changes in its products at any time and from time to time without notice and without incurring any obligation with respect to any product previously ordered from it, sold or shipped by it.

* See "California Emission Control Warranty Statement" and/or "Federal Emissions Warranty" for detail of emission controlled engine warranty, as applicable.

California Emission Control Warranty Statement

Your Warranty Rights and Obligations

The California Air Resources Board and New Holland are pleased to explain the emission control system warranty on your engine. In California, new 1998 and later heavy-duty off-road engines from 50 to 750 HP must be designed, built, and equipped to meet the State's stringent anti-smog standards. New Holland must warrant the emission control system on your engine for the periods of time listed below, provided there has been no abuse, neglect, or improper maintenance of your engine.

Your emission control system includes parts such as the fuel injection system and the air induction system.

Where a warrantable condition exists, New Holland will repair your heavy-duty off-road engine at no cost to you, including diagnosis, parts, and labor.

Manufacturer's Warranty Coverage:

The 1996 and later heavy-duty off-road engines are warranted from the original date of delivery for five years or 3,000 hours of operation, whichever occurs first. If any emission-related part on your engine is defective, the part will be repaired or replaced by New Holland.

Owner's Warranty Responsibilities:

- As the heavy-duty off-road engine owner, you are responsible for the performance of the required maintenance listed in your owner's manual. New Holland recommends that you retain all receipts covering maintenance on your heavy-duty off-road engine, but New Holland cannot deny warranty solely for the lack of receipts or for your failure to ensure the performance of all scheduled maintenance.
- As the heavy-duty off-road engine owner, you should, however, be aware that New Holland may deny you warranty coverage if your heavy-duty off-road engine or a part has failed due to abuse, neglect, improper maintenance, or unapproved modifications.
- Your engine is designed to operate on commercially available diesel fuel only. Use of any other fuel may result in your engine no longer operating in compliance with California's emissions requirements.
- You are responsible for initiating the warranty process. The ARB suggests that you present your heavy-duty off-road engine to a New Holland dealer as soon as a problem exists. The warranty repairs should be completed by the dealer as expeditiously as possible.

If you have questions regarding your warranty rights and responsibilities, you should contact your Branch Office at the address and phone number listed on the Owner Assistance page of your equipments operator manual.

- Prior to the expiration of the warranty, you must give notice of any failure of an emission control warranted part. Such notice must be given to New Holland or an authorized dealer, and you must deliver the engine to the repair location.
- You, the owner, are responsible for incidental costs incurred by yourself or your employees as a result of a warrantable failure. Examples of such costs are communication expenses, meals and lodging.
- The owner is responsible for any business costs or losses, any "downtime" expenses and any "cargo" damage which result from the failure of a warranted part. New Holland is not responsible for other incidental or consequential damages, including but not limited to fines, theft, vandalism or collisions.

Parts covered:

This emission control system warranty applies to the following emission control parts chart:

5610S	6610S	7610S
450/NE	450 T/PF	450 T/PD
Fuel Injection Pump	Fuel Injection Pump	Fuel Injection Pump
Fuel Injectors	Fuel Injectors	Fuel Injectors
Intake Manifold	Turbocharger	Turbocharger
Exhaust Manifold	Intake Manifold	Intake Manifold
	Exhaust Manifold	Exhaust Manifold

Any replacement part, equivalent in performance and durability, may be used in the performance of any maintenance or repairs and must be provided without charge to the owner. The use of these parts does not reduce the warranty obligations of New Holland. However, New Holland recommends the use of new, genuine New Holland service parts or New Holland approved rebuilt parts and assemblies. New Holland also recommends that the engine be service by a New Holland authorized dealer.

New Holland Responsibilities

Warranty work will be provided at no charge to the owner at any authorized dealer, using new genuine New Holland service parts or New Holland approved rebuilt parts or assemblies.

The owner will not be charged for diagnostic labor which leads to the determination that a warranted part is defective, if the diagnostic work was performed at a warranty station.

New Holland is liable for damages to other engine components caused by the failure under warranty of any warranted part.

Warranty Limitations

New Holland is not responsible for failures resulting from abuse or neglect by owner or operator.

New Holland warrants to the ultimate purchaser and each subsequent purchaser that the engine is designed, built, and equipped so as to conform with all applicable regulations adopted by the Air Resources Board, and that it is free from defects in materials and workmanship which cause the failure of a warranted part.

Any warranted part which is not scheduled for replacement as required maintenance, or which is scheduled only for regular inspection to the effect of "repair or replace as necessary" is warranted for the warranty period.

Any warranted part which is scheduled for replacement as required maintenance is warranted for the period of time prior to the first scheduled replacement point for that part.

New Holland is liable for damages to other engine components cause by the failure under warranty of any warranted part.

Federal Emissions Warranty

(California owner's emissions warranty is covered elsewhere)

New Holland warrants that you new 1997 and later heavy-duty off-road diesel engine was designed, built, and equipped to conform to applicable U.S. Environmental Protection Agency regulations for a period of use of five years or 3,000 hours of operation, whichever occurs first.

The new model year, class of diesel engine, and emission application determination for your engine are identified on the emission control information label affixed to the top of your engine's rocker arm cover. The warranty period begins on the date the new equipment is sold to the first retail purchaser.

Any emission control system parts which are proven defective during normal use will be repaired or replaced during the warranty period. The warranty repairs and service will be performed by any authorized New Holland dealer at the dealer's place of business, with no charge for parts or labor (including diagnosis).

As the engine owner, you are responsible to perform all the required maintenance listed in your owner's manual. New Holland will not deny an emission warranty claim solely because you have no record of maintenance; however, a claim may be denied if your failure to perform maintenance resulted in the failure of a warranted part. Receipts covering regular maintenance should be retained in the event of questions and these receipts should be passed on to each subsequent owner of the engine.

It is recommended replacement parts used for maintenance or repairs be New Holland Service Parts to maintain the quality originally designed into your emission certified engine. The use of non-New Holland parts does not invalidate the warranty on other components unless the use of such parts causes damage to warranted parts.

New Holland wishes to assure the emission control systems warranty is being properly administered. If you believe you have not received the service entitled to under this warranty, you should contact the nearest New Holland Branch Office for assistance. The address and phone number of each Branch Office is in your vehicle owner's manual. If additional assistance or information is needed, contact:

Service Department
New Holland North America, Inc.
500 Diller Avenue
New Holland, PA 17557
(717) 355-1121

Please note that the Emission Warranty does not cover:

1. Systems and parts that were not first installed on the new equipment or engine as original equipment by New Holland.
2. Part malfunctions caused by abuse, misuse, improper adjustment, modification, alteration, tampering, disconnection, improper or inadequate maintenance, or use of non-recommended fuels and lubricating oils.
3. Accident cause damage, acts of nature, or other events beyond New Holland's control.
4. Replacement of expendable items made in connection with scheduled maintenance.
5. Parts requiring replacement, inspection or adjustment maintenance intervals for reasons other than being defective.
6. Parts which are not New Holland Service Parts.
7. Loss of time, inconvenience, loss of use of equipment/engine or commercial loss.
8. Equipment with altered or disconnected hourmeter where the hours cannot be determined.
9. Equipment normally operated outside the United States.
10. Non-defective parts replaced by other than New Holland dealers.

Coverage

This emission control system warranty applies to the following emission control parts chart:

5610S	6610S	7610S
450/NE	450 T/PF	450 T/PD
Fuel Injection Pump	Fuel Injection Pump	Fuel Injection Pump
Fuel Injectors	Fuel Injectors	Fuel Injectors
Intake Manifold	Turbocharger	Turbocharger
Exhaust Manifold	Intake Manifold	Intake Manifold
	Exhaust Manifold	Exhaust Manifold

OWNER ASSISTANCE

We at New Holland and your New Holland dealer want you to be completely satisfied with your investment. Normally any problems with your equipment will be handled by your dealer's Service Department. Sometimes, however, misunderstanding can occur. If your problem has not been handled to your satisfaction, we suggest the following.

1. Contact the owner or General Manager of the dealership, explain the problem, and request assistance. When additional assistance is needed, your dealer has direct access to our branch office.
2. If you cannot obtain satisfaction by doing this, contact the branch office in your area and provide them with:
 - Your name, address, and telephone number
 - Machine model and serial number
 - Dealership name and address
 - Machine purchase date and amount of use
 - Nature of problem

Atlanta

4727 N Royal Atlanta Dr Suite P
Caller Service 105018
Tucker, GA 30085-5018
Telephone: (770) 723-3605
States: AL, FL, GA, KY, MS,
NC, SC, TN, VA

Dallas

1340 Walnut Hill Lane Bldg 2
P.O. Box 167528
Irving, TX 75016-7528
Telephone: (214) 756-4919
States: AR, AZ, CA, CO, HI, KS,
LA, MO, NM, NV, OK, TX, UT

Minneapolis

6301 W Old Shakopee Rd
P.O. Box 1342
Minneapolis, MN 55440-1342
Telephone: (612) 887-4231
States: AK, IA, ID, IL, MN, MT,
ND, NE, OR, SD, WA, WI, WY

New Holland

200 Commerce St.
P.O. Box 527
Mountville, PA 17554-0527
Telephone: (717) 285-8302
States: CT, DE, IN, MA, MD, ME,
MI, NH, NJ, NY, OH, PA, RI, VT,
WV

Calgary

Suite 220
3030 Third Ave. NE
Box 1616, Stn M
Calgary, AB
CANADA T2P 2M7
Telephone: (403) 569-3208

3. If you need further assistance contact:

*Service Department
Mail Station 500
New Holland North America, Inc.
New Holland, PA 17557*

When contacting your branch office or Service Department, be aware that your problem will likely be resolved in the dealership using the dealer's facilities, equipment, and personnel. So it is important that your initial contact be with the dealer.

A Service Publications Catalog & Order Form is available which lists the operator's and service manuals for many prior model and most current model Ford - New Holland - Versatile tractors, equipment, and consumer products. To obtain a copy of this catalog, please call 1-800-635-4913.

PRECAUTIONARY STATEMENTS

PERSONAL SAFETY

Throughout this manual and on machine decals, you will find precautionary statements (“CAUTION”, “WARNING”, and “DANGER”) followed by specific instructions. These precautions are intended for the personal safety of you and those working with you. Please take the time to read them.



CAUTION: THE WORD “CAUTION” IS USED WHERE A SAFE BEHAVIORAL PRACTICE ACCORDING TO OPERATING AND MAINTENANCE INSTRUCTIONS AND COMMON SAFETY PRACTICES WILL PROTECT THE OPERATOR AND OTHERS FROM ACCIDENT INVOLVEMENT.



WARNING: THE WORD “WARNING” DENOTES A POTENTIAL OR HIDDEN HAZARD WHICH HAS A POTENTIAL FOR SERIOUS INJURY. IT IS USED TO WARN OPERATORS AND OTHERS TO EXERCISE EVERY APPROPRIATE MEANS TO AVOID A SURPRISE INVOLVEMENT WITH MACHINERY.



DANGER: THE WORD “DANGER” DENOTES A FORBIDDEN PRACTICE IN CONNECTION WITH A SERIOUS HAZARD.

FAILURE TO FOLLOW THE “CAUTION”, “WARNING”, AND “DANGER” INSTRUCTIONS MAY RESULT IN SERIOUS BODILY INJURY OR DEATH.

MACHINE SAFETY

Additional precautionary statements (“ATTENTION” and “IMPORTANT”) are followed by specific instructions. These statements are intended for machine safety.

ATTENTION. The word “ATTENTION” is used to warn the operator of potential machine damage if a certain procedure is not followed.

IMPORTANT: The word “IMPORTANT” is used to inform the reader of something he needs to know to prevent minor machine damage if a certain procedure is not followed.

SAFETY PRECAUTIONS

A careful operator is the best operator. Most accidents can be avoided by observing certain precautions. To help prevent accidents, read and take the following precautions **before** driving, operating or servicing the tractor. Equipment should be operated only by those who are responsible and instructed to do so.

THE TRACTOR

1. Read the Operator's Manual carefully before using the tractor. Lack of operating knowledge can lead to accidents.
2. Only allow properly trained and qualified persons to operate the tractor.
3. To prevent falls, use the handrails and step plates when getting on and off the tractor. Keep steps and platform clear of mud and debris.
4. Do not permit anyone but the operator to ride on the tractor unless a passenger seat is fitted. There is no safe place for extra riders otherwise.
5. Replace all missing, illegible or damaged safety decals.
6. Keep safety decals free of dirt or grime.
7. Do not modify or alter or permit anyone else to modify or alter the tractor or any of its components or any tractor function without first consulting your dealer.
8. Tractor wheels are very heavy. Handle with care and ensure, when stored, that they cannot topple and cause injury.

DRIVING THE TRACTOR

1. Always sit in the driver's seat while starting or driving the tractor.
2. When driving on public roads, have consideration for other road users. Pull in to the side of the road occasionally to allow any following traffic to pass. Do not exceed the legal speed limit set in your area.
3. Use low beam lights when meeting a vehicle at night. Make sure the lights are adjusted to prevent blinding the driver of an oncoming vehicle.

4. Reduce speed before turning or applying the brakes. Ensure that both brake pedals are locked together when travelling at road speeds or when on public roads. Brake both wheels simultaneously when making an emergency stop.
5. Use extreme caution and avoid hard application of the tractor brakes when towing heavy loads at road speeds.
6. Any towed vehicle whose total weight exceeds that of the towing tractor must be equipped with brakes for safe operation.
7. Never apply the differential lock when turning. When engaged, the differential lock will prevent the tractor from turning.
8. Always check overhead clearance, especially when transporting the tractor. Watch where you are going, especially at row ends, on roads and around trees and low overhanging obstacles.
9. Use extreme caution when operating on steep slopes.
10. To avoid overturns, drive the tractor with care and at speeds compatible with safety, especially when operating over rough ground, when crossing ditches or slopes and when turning corners.
11. If the tractor becomes stuck or the tires are frozen to the ground, reverse the tractor out to prevent overturning.
12. Keep the tractor in the same gear when going downhill as would be used when going uphill. Do not coast or freewheel down hills.

OPERATING THE TRACTOR

1. Apply the parking brake, place the P.T.O. control in the 'OFF' position, the lift control lever in the down position, the remote control valve levers in the neutral position and the transmission levers in neutral before starting the tractor.
2. Do not start the engine or operate controls while standing beside the tractor. Always sit in the tractor seat when starting the engine or operating the controls.
3. Do not bypass the neutral start switches. Consult your authorized dealer if your neutral start controls malfunction. Use jump cables only in the recommended manner. Improper use can result in a tractor runaway.
4. Avoid accidental contact with the gear shift levers while the engine is running. Unexpected tractor movement can result from such contact.
5. Do not get off the tractor while it is in motion.
6. Shut off the engine and P.T.O. and apply the parking brake before getting off the tractor.
7. Do not park the tractor on a steep incline.
8. Do not run the tractor engine in an enclosed building without adequate ventilation. Exhaust fumes are toxic and can cause death.
9. Always wear a protective mask when working with toxic spray chemicals. Follow the directions on the chemical container.
10. If the power steering or engine ceases operating, stop the tractor immediately as the tractor will be more difficult to control.
11. Stop the engine and relieve pressure before connecting or disconnecting hydraulic, steering or fuel lines.
12. Tighten all connections before starting the engine or pressurizing lines.
13. Pull only from the swinging drawbar or the lower link drawbar in the lowered position. Use only a drawbar pin that locks in place. Pulling from the tractor rear axle or any point above the axle may cause the tractor to overturn.
14. If the front end of the tractor tends to rise when heavy implements are attached to the three-point hitch, install front end or front wheel weights. Do not operate the tractor with a light front end.
15. Always select Position Control when attaching equipment and when transporting equipment. Be sure hydraulic couplers are properly installed and will disconnect safely in case of accidental detachment of the implement.
16. Do not leave equipment in the raised position when the vehicle is stopped or unattended.
17. Ensure any attached equipment or accessories are correctly installed, are approved for use with the tractor, do not overload the tractor and are operated and maintained in accordance with the instructions issued by the equipment or accessory manufacturer.
18. Remember that your tractor, if abused or incorrectly used, can be dangerous and become a hazard both to the operator and to bystanders. Do not overload or operate with attached equipment which is unsafe, not designed for the particular task or is poorly maintained.
19. The tractor is designed to provide the minimum noise level at the operator's ears and meets or exceeds applicable standards in this respect. However, noise (sound pressure level) in the workplace can exceed 86 dB(A) when working between buildings or in confined spaces. Therefore, it is recommended that operators wear suitable ear protectors during vehicle operation.

OPERATING THE P.T.O.

1. When operating P.T.O.- driven equipment, shut off the engine and wait until the P.T.O. stops before getting off the tractor and disconnecting the equipment.
2. Do not wear loose clothing when operating the power take-off or especially when near rotating equipment.
3. When operating stationary P.T.O.-driven equipment, always apply the tractor parking brake and block the rear wheels front and back.
4. To avoid injury, do not clean, adjust, unclog or service P.T.O. driven equipment when the tractor engine is running.
5. Make sure the P.T.O. guard is in position at all times and always replace the P.T.O. cap when the P.T.O. is not in use.

SERVICING THE TRACTOR

1. The cooling system operates under pressure which is controlled by the radiator cap. It is dangerous to remove the cap while the system is hot. Always turn the cap slowly to the first stop and allow the pressure to escape before removing the cap entirely.
 2. Do not smoke while refuelling the tractor. Keep any type of open flame away. Wait for the engine to cool before refuelling.
 3. Keep the tractor and equipment, particularly brakes and steering, maintained in a reliable and satisfactory condition to ensure your safety and comply with legal requirements.
 4. To prevent fire or explosion, keep open flames away from battery or cold weather starting aids. To prevent sparks which could cause explosion, use jumper cables according to instructions.
 5. Stop the engine before performing any service on the tractor.
 6. Escaping diesel/hydraulic fluid under pressure can penetrate the skin causing serious injury.
 - **Do not use your hand to check for leaks.** Use a piece of cardboard or paper to search for leaks.
- Stop the engine and relieve pressure before connecting or disconnecting lines.
 - Tighten all connections before starting the engine or pressurizing lines.
 - If fluid is injected into the skin obtain medical attention immediately.
 7. Do not modify or alter or permit anyone else to modify or alter the tractor or any of its components or any tractor function without first consulting an authorized dealer.
 8. The fuel oil in the injection system is under high pressure and can penetrate the skin. Unqualified persons should not remove or attempt to adjust a pump, injector, nozzle or any other part of the fuel injection system. Failure to follow these instructions can result in serious injury.
 9. Continuous long term contact with used engine oil may cause skin cancer. Avoid prolonged contact with used engine oil. Wash skin promptly with soap and water.
 10. Some components on your tractor, such as gaskets and friction surfaces (brake linings, clutch linings, etc.), may contain asbestos. Breathing asbestos dust is dangerous to your health. You are, therefore, advised to have any maintenance or repair operations on such components carried out by an authorized New Holland dealer. If, however, service operations are to be undertaken on parts that contain asbestos, the following essential precautions must be observed:
 - Work out of doors or in a well ventilated area.
 - Dust found on the tractor or produced during work on the tractor should be removed by extraction not by blowing.
 - Dust waste should be dampened, placed in a sealed container and marked to ensure safe disposal.
 - If any cutting, drilling, etc., is attempted on materials containing asbestos, the item should be dampened and only hand tools or low speed power tools used.

DIESEL FUEL

1. Under no circumstances should gasoline, alcohol or blended fuels be added to diesel fuel. These combinations can create an increased fire or explosive hazard. In a closed container such as a fuel tank these blends are more explosive than pure gasoline. Do not use these blends.
2. Never remove the fuel cap or refuel with the engine running or hot.
3. Do not smoke while refuelling the tractor or when standing near fuel. Keep any type of open flame away. Wait for the engine to cool before refuelling.
4. Maintain control of the fuel filler pipe nozzle when filling the tank.
5. Do not fill the fuel tank to capacity. Allow room for expansion.
6. Wipe up spilled fuel immediately.
7. Always tighten the fuel tank cap securely.
8. If the original fuel tank cap is lost, replace it with an approved cap. A non-approved cap may not be safe.
9. Keep equipment clean and properly maintained.
10. Do not drive equipment near open fires.
11. Never use fuel for cleaning purposes.
12. Arrange fuel purchases so that summer grade fuels are not held over and used in the winter.

SAFETY FRAME OR ROLL BAR


Your tractor may be equipped with a safety frame or roll bar which must be maintained in a serviceable condition. Be careful when driving through doorways or working in confined spaces with low headroom.

1. Do not modify, drill, weld or alter the safety frame or roll bar in any way.
2. Never attempt to straighten or weld any part of the safety frame, roll bar or retaining brackets which have suffered damage. By doing so you may weaken the structure and endanger your safety.
3. Do not secure any parts on the safety frame or roll bar or attach it with other than the special high tensile bolts and nuts specified.
4. Never attach chains or ropes to the safety frame or roll bar for pulling purposes.
5. Never take unnecessary risks even though your safety frame or roll bar affords you the maximum protection possible.


**Whenever you see this symbol  it means: ATTENTION!
BECOME ALERT! YOUR SAFETY IS INVOLVED!**

IDENTIFICATION DECALS

A vehicle identification plate is located under the tractor hood. In addition, if your tractor is equipped with optional four wheel drive, a similar plate is affixed to the rear surface of the front axle housing. For convenience, the numbers shown on the plates should be recorded in the panels below and quoted to your Ford New Holland dealer in the event the tractor requires service.

New Holland de México S.A. de C.V.		
NEW HOLLAND		
MADE IN MEXICO		
06/24/99		
TRACTOR NUMBER	MODEL	UNIT
<input type="text"/>	<input type="text"/>	<input type="text"/>
ENGINE	TRANSMISSION	REAR AXLE
<input type="text"/>	<input type="text"/>	<input type="text"/>
HYDRAULIC PUMP	HYDRAULIC LIFT	ENGINE DATE
<input type="text"/>	<input type="text"/>	<input type="text"/>
SPECIAL ORDER		
<input type="text"/>		
 XXXXXXXX-XXXXXXXXXX		

Vehicle Identification Plate

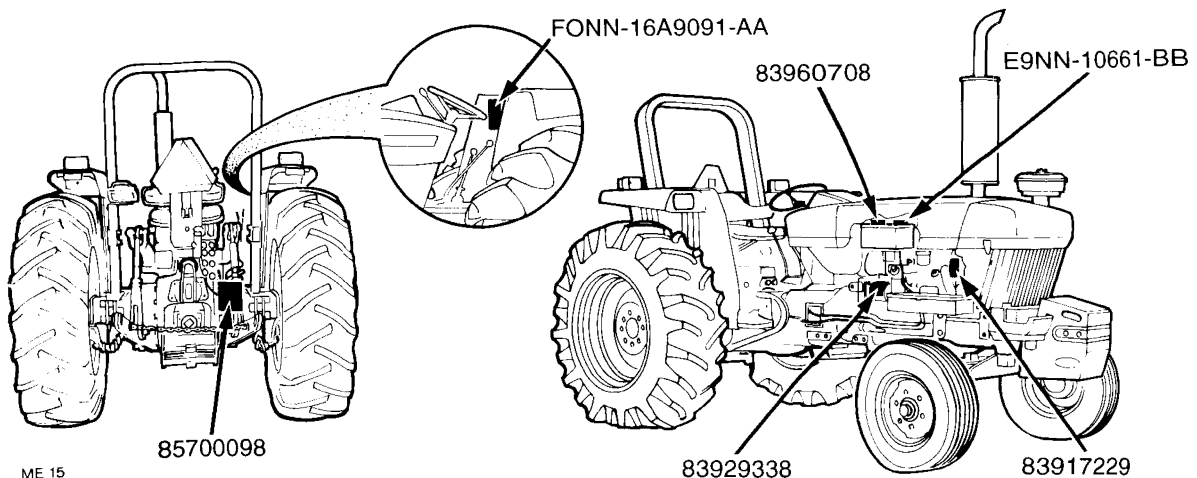
AXLE TYPE		SERIAL N°
<input type="text"/>		<input type="text"/>
CARRARO N°	CUSTOMER N°	TOTAL RATIO
<input type="text"/>	<input type="text"/>	<input type="text"/>
INPUT ROTATION		DIFERENTIAL TYPE
<input type="text"/>		<input type="text"/>
<input type="text"/>		DIFF.
<input type="text"/>		EPIC.
 CARRARO		
MADE IN ITALY		

Front Axle Identification Plate

SAFETY DECALS

On the following page you will find examples of the decals that are affixed to various parts of your tractor. The particular decals illustrated are specifically those for tractors destined for North America. However, wherever you are located, similar decals will be found on your tractor. The decals are provided to advise you of correct operating techniques and guard against possible hazards. They are provided for your safety!

The tractor outline provided below shows the location of decals. If any decal is damaged or otherwise becomes illegible, see your dealer for a replacement.



SAFETY DECALS

Replace missing, damaged or illegible decals.

<p>DANGER – EXPLOSIVE CAN CAUSE BLINDNESS OR SEVERE INJURY. PROTECT EYES. SPARKS, FLAMES, CIGARETTES CAN CAUSE EXPLOSION: TOOLS AND CABLE CLAMPS CAN CAUSE SPARKS. DO NOT USE WITHOUT INSTRUCTION. KEEP VENT CAPS TIGHT AND LEVEL.</p>	<p>DISTRIBUTED BY FORD NEW HOLLAND INC.</p>
<p>ACID – POISON CAUSES SEVERE BURNS. CONTAINS SULFURIC ACID. IN EVENT OF CONTACT, FLUSH WITH WATER AND SEE A DOCTOR. KEEP OUT OF REACH OF CHILDREN</p>	<p>REPLACE WITH TRACTOR BATTERY F-150</p>

Part No. 83960708
Location: Top of battery

WARNING

- Before starting and operating
 - Know the operating and safety instructions in the operator's manual and on the tractor.
 - Clear the area of bystanders
 - Locate and know operation of controls.
 - Fasten your seat belt.
- Start engine only from operators seat with transmission in neutral, PTO disengaged and hydraulic controls in lowered position.
- Avoid accidental contact with gear shift lever while the engine is running. Unexpected tractor movement can result.
- Slow down on turns, rough ground and slopes to avoid upset.
- Do not permit anyone but the operator to ride on the tractor. There is no safe place for riders.
- Lock brakes together, use warning lights and SMV emblem while driving on roads.
- Lower equipment, place gear shift levers in neutral, stop engine and apply parking brake before leaving tractor seat.

FAILURE TO FOLLOW ANY OF THE INSTRUCTIONS ABOVE CAN CAUSE SERIOUS INJURY TO THE OPERATOR OR OTHER PERSONS.

Replacement manuals are available from your Ford New Holland dealer or from Ford New Holland service publications, 500 Otter Ave., New Holland, PA 17357

Part No. 83990357
Location: Right-hand fender

WARNING

- Start engine only from operators seat, if safety start switch is bypassed engine can start with transmission in gear.
- Do not connect or short across terminals on starter solenoid.
- Attach booster cables as shown on battery decal.

Starting in gear causing runaway can result in serious injury.

Part No. 83929328
Location: Starting motor

WARNING

- Pull only from drawbar. Pulling from any other point can cause rear overturn.
- Do not operate with unshielded PTO.
- Disengage PTO and stop engine before servicing tractor or implements or attaching and detaching implements.
- Position drawbar at 14" from end of PTO shaft to drawbar hole for 540 and 16" for 1000 PTO RPM.
- When towing equipment use a safety chain.

FAILURE TO FOLLOW ANY OF THE INSTRUCTIONS ABOVE CAN CAUSE SERIOUS INJURY TO THE OPERATOR OR OTHER PERSONS.

Part No. 85700008
Location: Rear of axle housing, right-hand side

WARNING

TO JUMP START
(Negative Grounded Battery)

1. Shield eyes. 2. Connect end of one cable to positive (+) terminals of each battery.
3. Connect one end of other cable to negative (-) terminal of "Good" battery.
4. Connect other end to engine block of vehicle being started. TO PREVENT DAMAGE to other electrical components on vehicle being started, make certain that engine is at idle speed before disconnecting jumper cables.

Location: Top of battery

WARNING

KEEP HANDS AND CLOTHING AWAY FROM ROTATING FAN AND BELTS TO PREVENT SERIOUS INJURY

Location: Fan shroud, both sides

Thank you so much for reading.
Please click the “Buy Now!”
button below to download the
complete manual.



After you pay.

You can download the most
perfect and complete manual in
the world immediately.

Our support email:

ebooklibonline@outlook.com