

NEW HOLLAND  
TJ275  
TJ325  
TJ375  
TJ425  
TJ450

(Replaces 86624854)

86977015

12/01

OPERATOR'S MANUAL



NEW HOLLAND

# TABLE OF CONTENTS

<b>1-TO THE OWNER</b> .....	<b>1</b>
PRODUCT IDENTIFICATION AND SERIAL NUMBERS .....	3
CHEMICAL TANK MOUNTING .....	7
BUSINESS BAND RADIOS .....	8
<b>2-SAFETY/DECALS</b> .....	<b>11</b>
PERSONAL SAFETY ALERT .....	11
SAFETY .....	12
SAFETY DECALS .....	15
ROLL OVER PROTECTIVE STRUCTURE (ROPS) .....	20
SEAT BELTS .....	22
TRACTOR WARNING LAMPS AND SMV SYMBOL .....	23
IMPLEMENT WARNING LAMPS AND SMV SYMBOL .....	24
SAFETY CHAIN .....	24
<b>3-OPERATING CONTROLS</b> .....	<b>25</b>
TRACTOR ACCESS .....	25
OPERATORS SEAT WITH AIR SUSPENSION .....	27
STEERING COLUMN CONTROLS .....	30
STEERING COLUMN ADJUSTMENT .....	31
FOOT PEDALS .....	32
CENTER CONSOLE CONTROLS .....	33
RH ARMREST CONTROL CONSOLE .....	35
REMOTE VALVE FUNCTION CONTROL .....	38
ARM REST CONTROL CONSOLE ADJUSTMENT (IF EQUIPPED) .....	44
UPPER CONSOLE CONTROLS .....	44
STANDARD HVAC CONTROL SYSTEM .....	48
AUTOMATIC CLIMATE CONTROL OPERATION (IF EQUIPPED) .....	49
AUTOMATIC CLIMATE CONTROL OPERATION .....	51
DEFOG CONTROL OPERATION .....	51
TROUBLESHOOTING THE HVAC CONTROL SYSTEM .....	51
<b>4-INSTRUMENTATION</b> .....	<b>57</b>
ROPS POST INSTRUMENT CLUSTER .....	57
PROGRAMMING THE DISPLAY MONITOR .....	60
INSTRUMENT PANEL BACKLIGHT INTENSITY .....	61
CHANGING THE REMOTE VALVE EXTEND/RETRACT VALUES (IF EQUIPPED) .....	61
CHANGING TIRE RADIUS .....	62
RADAR SENSOR CALIBRATION .....	62
RADAR CALIBRATION PROCEDURE .....	62
TIRE AVERAGE ROLLING RADIUS CHART .....	64
DYNAMIC ROLLING RADIUS .....	64
CRITICAL WARNING DISPLAYS .....	65
NON-CRITICAL WARNING DISPLAYS .....	65
DIAGNOSTIC WARNING DISPLAYS .....	67
INFORMATION WARNING DISPLAYS .....	68
<b>5-OPERATING INSTRUCTIONS</b> .....	<b>79</b>
BEFORE STARTING THE ENGINE .....	79
RUN-IN PROCEDURE .....	79
ENGINE OVERSPEED .....	80
SEAT BELT .....	80
NORMAL ENGINE STARTING PROCEDURE .....	81
STOPPING THE ENGINE .....	83
COLD TEMPERATURE OPERATION .....	84
TOWING THE TRACTOR .....	88
TRANSPORTING THE TRACTOR .....	89

POWERSHIFT TRANSMISSION OPERATION .....	90
24-SPEED TRANSMISSION OPERATION (IF EQUIPPED) .....	94
DIFFERENTIAL LOCK .....	96
CONSTANT ENGINE SPEED OPERATION (IF EQUIPPED) .....	97
<b>6-FIELD OPERATION .....</b>	<b>99</b>
OPERATING THE POWER TAKEOFF (PTO) .....	101
STANDARD DRAWBAR .....	103
THREE POINT HITCH PREPARATION .....	108
HITCH COUPLER - CATEGORY III OR IV-N .....	113
HITCH OPERATION .....	117
REMOTE HYDRAULICS .....	125
AUXILIARY IMPLEMENT POWER CONNECTIONS .....	136
<b>7-IN FIELD PERFORMANCE .....</b>	<b>139</b>
TRACTOR BALLAST .....	139
FRONT AND REAR SUITCASE WEIGHTS .....	145
FRONT SUITCASE WEIGHT, TIE BOLT AND CLAMP INSTALLATION .....	146
WHEEL WEIGHTS .....	148
WHEEL WEIGHT BOLT TORQUE .....	148
TIRE AND RIM SERVICE .....	149
TIRE PRESSURE FOR MAXIMUM TIRE LOAD AT RATED INFLATION .....	152
WHEEL BOLT TORQUES .....	155
WHEEL OFFSET DIRECTION CHANGE .....	155
<b>8-LUBRICATION/FILTERS/FLUIDS/MAINTENANCE .....</b>	<b>167</b>
LUBRICATION AND MAINTENANCE .....	167
PLASTIC AND RESIN PARTS .....	167
LUBRICANTS AND CAPACITIES .....	167
ENGINE LUBRICATION .....	168
GRILLE AND HOOD ACCESS .....	171
ACCESS TO BATTERIES AND HYDRAULIC FILTER .....	173
LUBRICATION AND MAINTENANCE CHART .....	174
AIR INDUCTION SYSTEM .....	197
<b>9-ELECTRICAL SYSTEM .....</b>	<b>217</b>
SPECIFICATIONS .....	217
GENERAL SERVICE INFORMATION .....	223
DIESEL ENGINE .....	225
<b>10-SPECIFICATIONS .....</b>	<b>225</b>
TRACTOR WEIGHTS .....	228
APPROXIMATE TRAVEL SPEEDS (MPH) .....	229
APPROXIMATE TRAVEL SPEEDS (KPH) .....	230
APPROXIMATE TRAVEL SPEEDS (MPH) .....	231
APPROXIMATE TRAVEL SPEEDS (KPH) .....	232
APPROXIMATE TRAVEL SPEEDS (MPH) .....	233
APPROXIMATE TRAVEL SPEEDS (MPH) .....	234
APPROXIMATE OVERALL MEASUREMENTS .....	235
<b>DETAIL INDEX .....</b>	<b>237</b>
<b>DELIVERY REPORT .....</b>	<b>243</b>
DELIVERY REPORT .....	245
<b>FIRST 50-HOUR SERVICE .....</b>	<b>247</b>
FIRST 50-HOUR SERVICE .....	249

## GENERAL INFORMATION

### INTRODUCTION TO THIS MANUAL

This manual contains important information about the safe operation, adjustment and routine maintenance of your New Holland TJ Series Tractors. The manual is divided into ten sections as outlined in the General Table of Contents Page(s). Refer to the Detail Index at the end of this manual for locating specific items about your tractor.

Use this manual as a guide. Your tractor will remain a reliable working machine as long as it is kept in good working condition and serviced properly.

Read this manual before you start the engine or operate this tractor. If any information in this manual is not understood, or if you need more information or assistance, contact your dealer.

All persons training to operate, or who will be operating this tractor, should be old enough to possess a valid local vehicle operating permit (or other applicable local age requirement) and must have demonstrated the ability to operate and service the tractor correctly and safely.

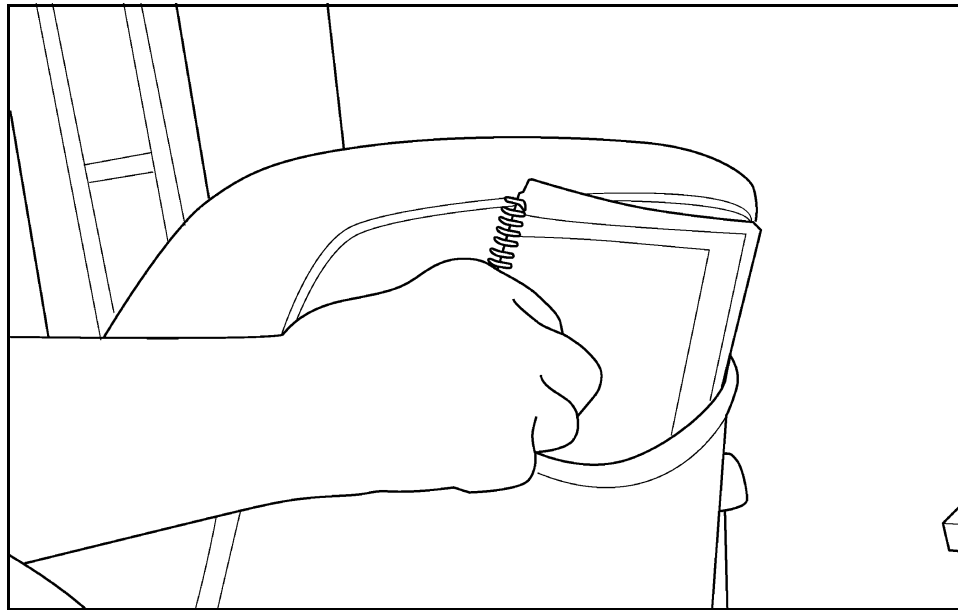
If your tractor requires replacement parts, do not use unauthorized parts or substitute materials. New Holland dealers stock approved service parts and have technicians with special training that know the best methods of repair and maintenance for your tractor.

### STATEMENT OF TRACTOR INTENDED USE

The New Holland TJ Series Tractor, with standard equipment and authorized attachments, is intended to be used for customary farming, land leveling and related agriculture operations.

Installation of utility (dozer) blades, front loaders or push bars on the tractor is not recommended. Any tractor damage resulting from the installation and/or use of such equipment is not covered by the tractor warranty.

### OPERATOR MANUAL STORAGE COMPARTMENT



MK99H025

DO NOT permit anyone to operate or service this tractor until you or other operators have read this manual. The Operators Manual is a part of your tractor and must be available to all operators.

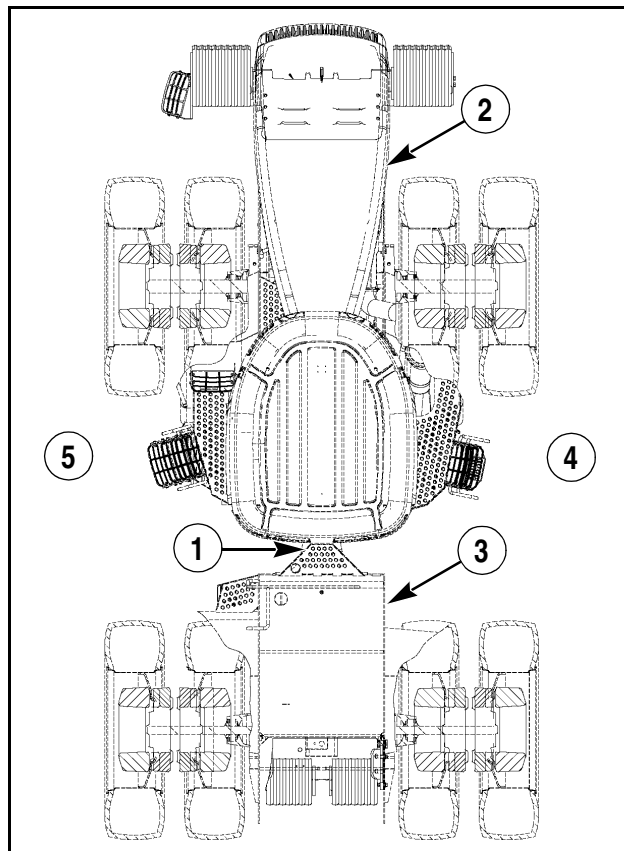
Make sure the manual is complete and in good condition. Store the Operators Manual and other important tractor information in the storage compartment provided on the rear side of the seat backrest.

## TRACTOR ORIENTATION

The TJ Series New Holland Tractor is classified as a four-wheel drive articulating vehicle. The standard tractor consists of front and rear frame assemblies that steer by pivoting at the center articulation joint (1).

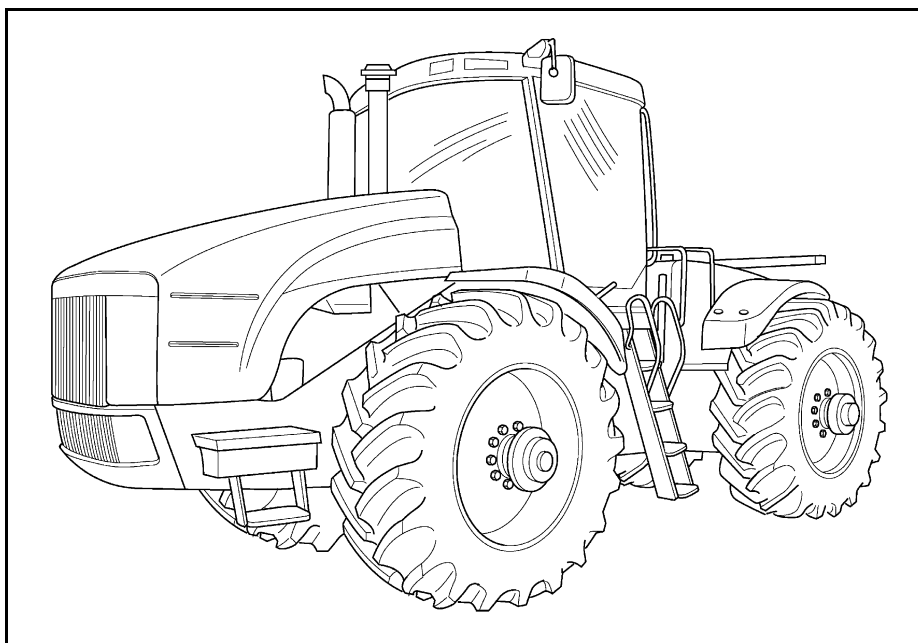
The standard tractor front frame (2) incorporates the engine, front axle, transmission and cab. The rear frame (3) incorporates the rear axle and fuel tank.

The right hand (RH) (4) and left hand (LH) (5) side of the tractor as used in this manual are the same as your right hand and left hand when sitting in the operators seat looking forward over the engine.



MA00A013

## TJ SERIES NEW HOLLAND TRACTOR



MK01G135

## PRODUCT IDENTIFICATION AND SERIAL NUMBERS

Write your machine Model Number, Product Identification Number (P.I.N.) and Serial Numbers of major components on the lines provided. If needed,

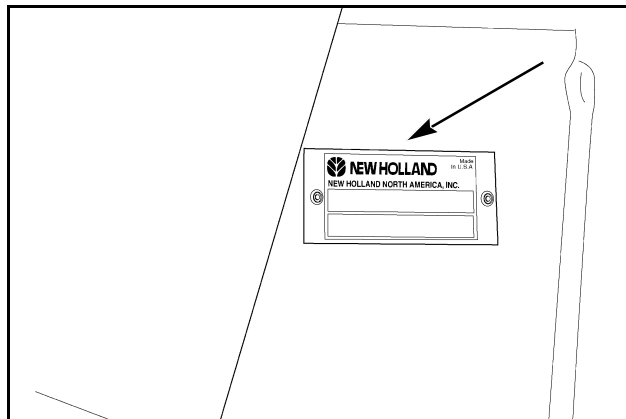
give these numbers to your dealer when you need parts or information for your machine.

### TRACTOR MODEL AND PRODUCT IDENTIFICATION NUMBERS

Model \_\_\_\_\_

P.I.N. \*RVS \_\_\_\_\_

Located on rear side of LH front fender.

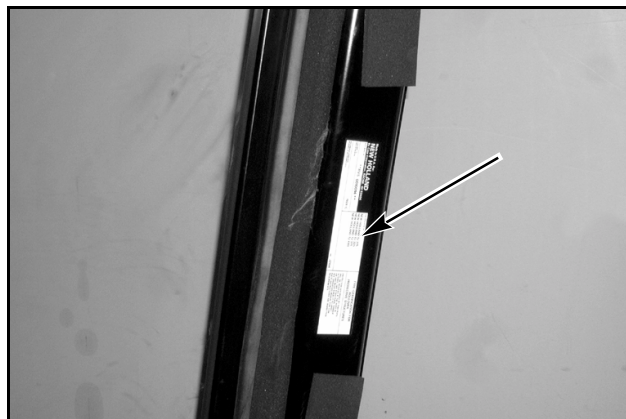


MK01G124

### ROPS SERIAL NUMBER

\*RVS \_\_\_\_\_

Located under the cover of the LH front ROPS post.

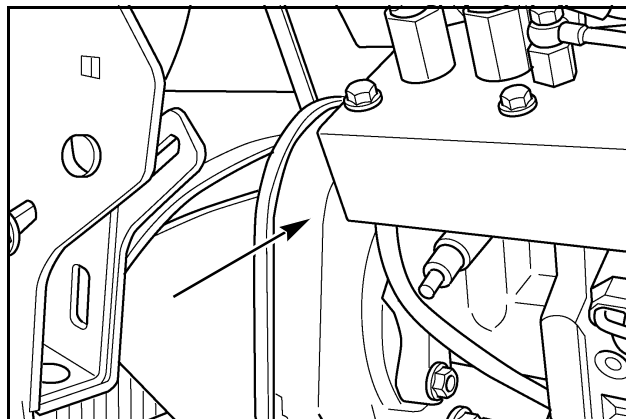


MK01G272

### ENGINE SERIAL NUMBER (TJ 275-325)

\_\_\_\_\_

Located on front LH side of engine.



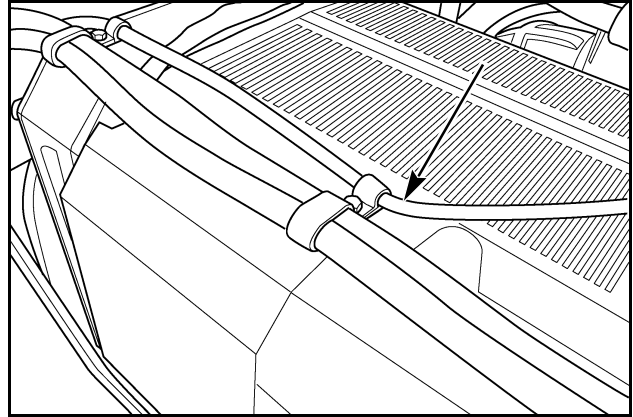
MK99K053

## 1-TO THE OWNER

### ENGINE SERIAL NUMBER (TJ 375-450)

\_\_\_\_\_

Located on the top LH side of the engine valve cover.

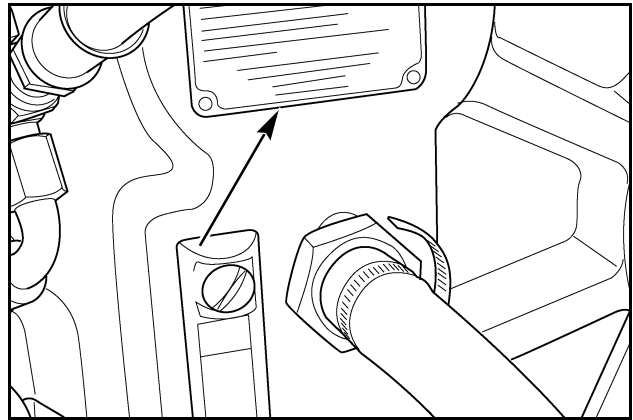


MK01G101

### TRANSMISSION SERIAL NUMBER

\_\_\_\_\_

Located on the LH rear side of the transmission.

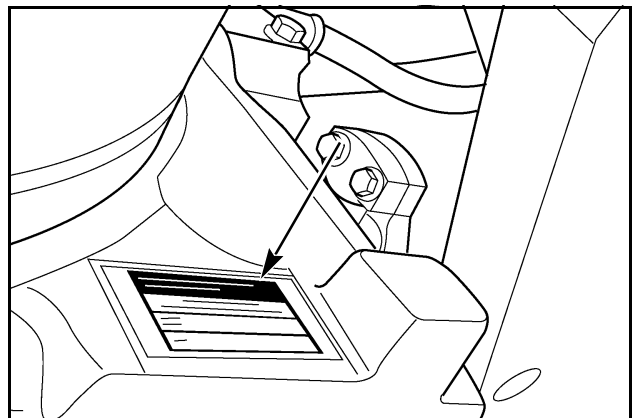


MK98C005

### AXLE SERIAL NUMBER (TJ 275 - 325 - 375 Std)

\_\_\_\_\_

Located on the side of the axle center housing.



MK99K097

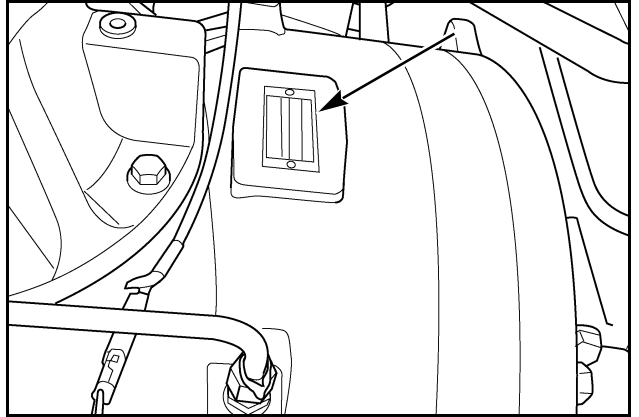
## 1-TO THE OWNER

---

AXLE SERIAL NUMBER - REAR (TJ 375HD, 425,  
450)

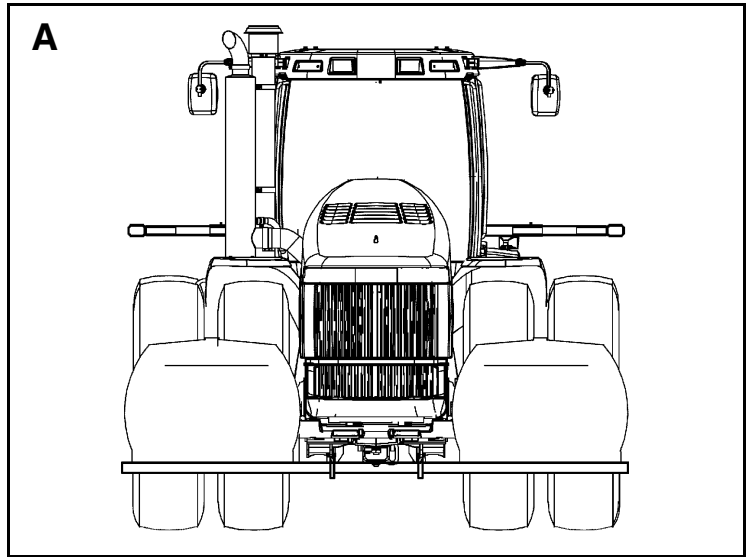
---

Located on the final drive housing.

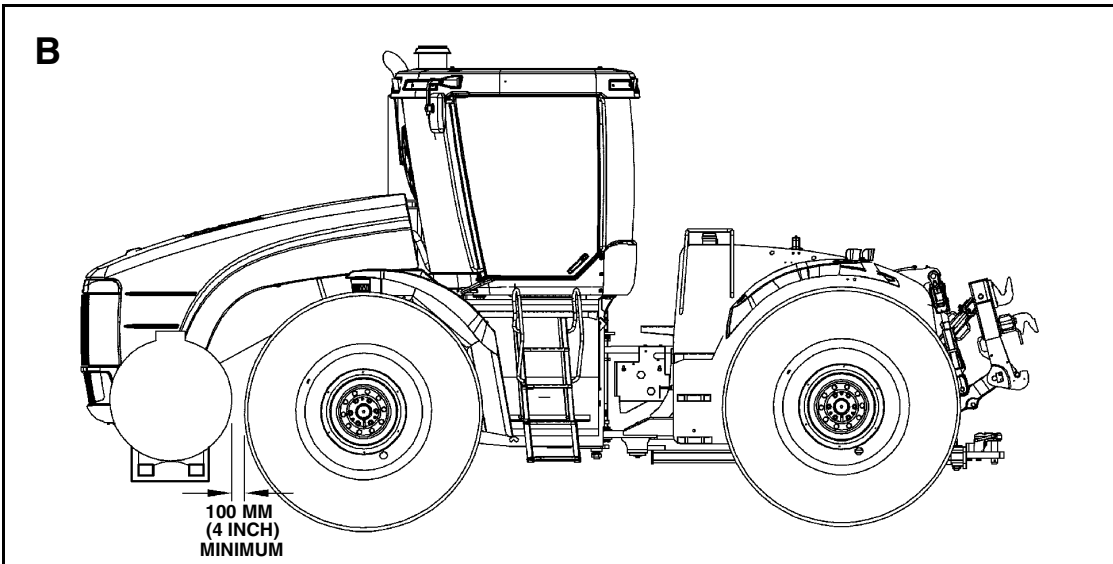


MK01G070

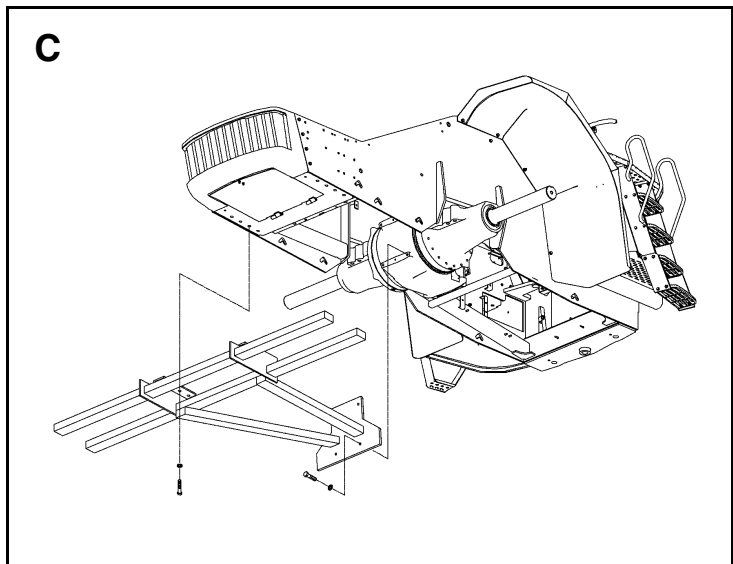




MA01G029



MA00G028



MA01G030

Thank you so much for reading.  
Please click the “Buy Now!”  
button below to download the  
complete manual.



After you pay.

You can download the most  
perfect and complete manual in  
the world immediately.

Our support email:

[ebooklibonline@outlook.com](mailto:ebooklibonline@outlook.com)