

NEW HOLLAND

36in Tiller

OPERATOR'S MANUAL

For MY Series Tractors
Model No.
715704016—T04MK0001 & Up

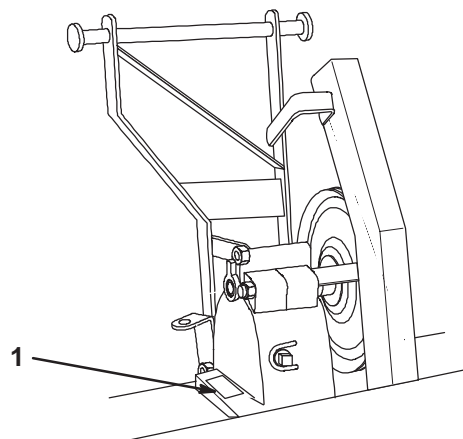


NEW HOLLAND

SERVICE

Contents

	Page
Introduction	2
Safety	3
Safety and Instruction Decals	3
Assembly	4
Loose Parts	4
Installing the Tiller Hitch	5
Installing the Drive Pulley	6
Installing the Idler Pulley and Belt Guide	7
Installing the Rear Shield	7
Installing the Lift Chain	7
Installing the Lift Rod to the Tractor	8
Installing the Lift Rod to the Tiller	9
Installing the Jackshaft	9
Installing the Tiller to the Tractor	10
Removing the Tiller from the Tractor	12
Operation	13
Operating the Power Take Off (PTO)	13
Using the Attachment Power Lift	13
Operating the Attachment Lift Lever	14
Adjusting the Lift Chain	14
Tips for Tilling	15
Maintenance	16
Recommended Maintenance Schedule	16
Greasing and Lubrication	16
Greasing the Tiller	17
Storage	18



2276

Figure 1

1. Location of the model and serial numbers

Write the model and product identification numbers in the space below:

<p>Model No. _____</p> <p>Product ID No. _____</p>
--

This manual identifies potential hazards and has special safety messages that help you and others avoid personal injury and even death. ***Danger, Warning, and Caution*** are signal words used to identify the level of hazard. However, regardless of the hazard, be extremely careful.

Danger signals an extreme hazard that *will* cause serious injury or death if you do not follow the recommended precautions.

Warning signals a hazard that *may* cause serious injury or death if you do not follow the recommended precautions.

Caution signals a hazard that may cause minor or moderate injury if you do not follow the recommended precautions.

This manual uses two other words to highlight information. **Important** calls attention to special mechanical information and **Note:** emphasizes general information worthy of special attention.

Introduction

Read this manual carefully to learn how to operate and maintain your product properly. The information in this manual can help you and others avoid injury and product damage. Although New Holland designs and produces safe products, you are responsible for operating the product properly and safely.

Whenever you need service, genuine New Holland parts, or additional information, contact an Authorized Service Dealer or New Holland Customer Service and have the model and serial numbers of your product ready. Figure 1 illustrates the location of the model and serial numbers on the product.

Safety

Warning

Rotating tines can cut hands, feet or other body parts.

- Keep away from the rotating tines while operating the tiller.
- Keep your hands, feet, and any other part of your body or clothing away from rotating parts.
- Before adjusting, cleaning, repairing and inspecting the tiller, lower the tiller and loader arms to the ground and turn off the engine. Remove the key.

Warning

Contact with buried power, gas, and/or telephone lines, in the tilling area, can cause shock or explosion.

- Have the property or area to be tilled marked for buried lines.

Warning

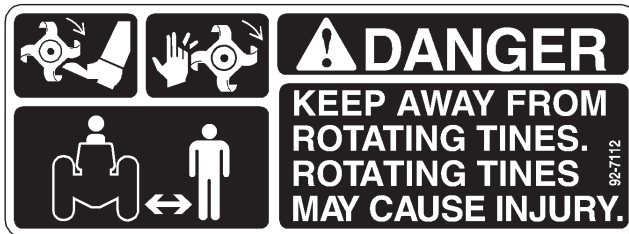
Stones and other foreign objects can be picked up and thrown. This can cause serious personal injury to operator or bystanders.

- Run the tiller so that debris is thrown away from the traction unit.
- Keep all bystanders away from the work area.

Safety and Instruction Decals



Safety decals and instructions are easily visible to the operator and are located near any area of potential danger. Replace any decal that is damaged or lost.



TR92D7112

Assembly

Note: Determine the left and right sides of the machine from the normal operating position.

Loose Parts

Note: Use the chart below to verify all parts have been shipped

DESCRIPTION	QTY.	USE
Hitch	1	Installing the tiller hitch
Spring bracket	1	
Pulley	1	Installing the drive pulley
Key	1	
Set screw, 5/16 inch	2	
Idler pulley	1	Installing the idler pulley and belt guard
Spacer	1	
Belt guide	1	
Belt guard	1	
Bolt, 3/8 x 2-1/4 inch	1	
Lock nut 3/8 inch	1	
Rear shield	1	Installing the rear shield
Cotter pin 1 inch	3	
Lift chain	1	Installing the lift chain
Clevis	1	
Clevis Pin	1	
Cotter pin, 3/4 inch	1	
Lift rod	1	Installing the lift rod to tractor
Washer, 3/8 inch	2	
Cotter pin, 3/4 inch	1	
Bolt, 3/8 x 2-3/4 inch	1	
Spacer, 0.62 x 0.60 inch	1	
Adjustable yoke	1	Installing the lift rod to tiller
Nut, 5/16 inch	1	
Clevis pin	1	
Cotter pin, 3/4 inch	1	
Jackshaft	1	Installing the jackshaft
Extension spring	1	

DESCRIPTION	QTY.	USE
Bolt, 3/8 x 1-1/2 inch	1	Installing the tiller to the tractor
Spacer, 0.62 x 0.60 inch	1	
Washer, 3/8 inch	1	
Lock nut, 3/8 inch	1	
Spring catch	1	
Lift assist spring	1	
Eye bolt	1	
Lock nut, 3/8 inch	1	
Belt	1	
Belt	1	
Operator's Manual	1	Read before installing and operating tiller.

Important A Front Pulley Box/PTO belt and Rear hitch are required to install and operate the tiller. If these kits are not already on the tractor, install them per the instructions included with the kits.

If you do have these kits, they can be obtained from your Authorized Service Dealer.

Installing the Tiller Hitch

1. Tip the tiller onto its back and support it in an upright position. Remove the 3/8 x 5-1/2 inch and 3/8 x 4-1/2 inch bolts and the 3/8 inch nuts securing the gear case together (Fig. 2). Discard extra nuts used as spacers for shipping.

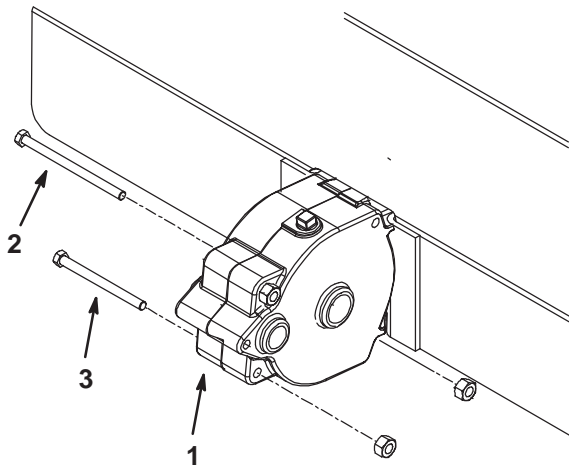


Figure 2

1. Gear case
2. Bolt, 3/8 x 5-1/2 inch
3. Bolt, 3/8 x 4-1/2 inch

2. Loosely mount the rear of the hitch and the spring bracket to the rear of the gear case with the previously removed 3/8 x 5-1/2 inch bolt and nut. Position components as shown in figure 3. Tighten the bolts securely.

Note: Make sure the bolt is positioned as shown in figure 3.

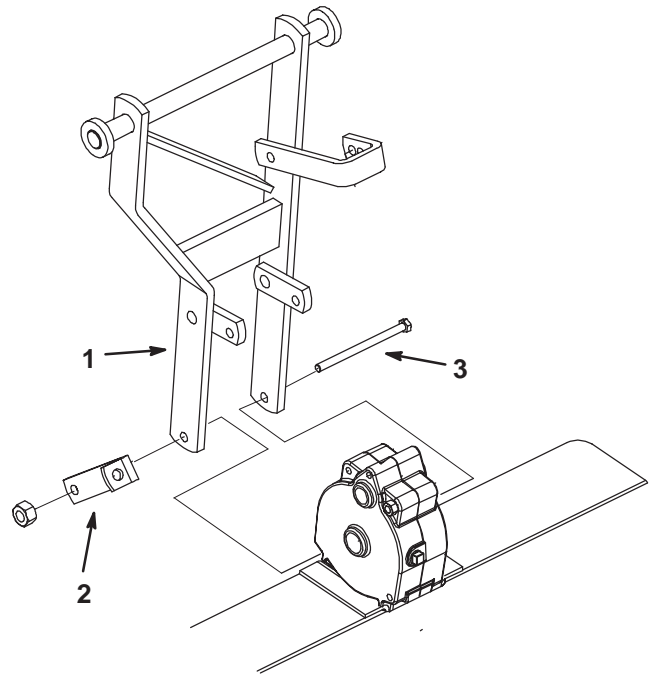


Figure 3

1. Hitch
2. Spring bracket
3. Bolt, 3/8 x 5-1/2 inch

Thank you so much for reading.
Please click the “Buy Now!”
button below to download the
complete manual.



After you pay.

You can download the most
perfect and complete manual in
the world immediately.

Our support email:

ebooklibonline@outlook.com