

MXU100

MXU110

MXU115

MXU125

MXU135

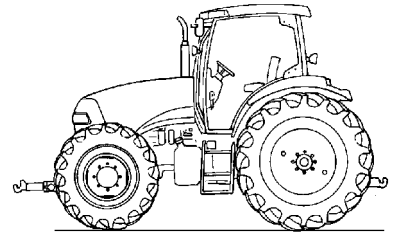
MXU PRO TRACTORS
Multicontroller

Operator's Manual

87388559 EN



CASE



MXU100 PRO Multicontroller

MXU110 PRO Multicontroller

MXU115 PRO Multicontroller

MXU125 PRO Multicontroller

MXU135 PRO Multicontroller

TRACTORS

OPERATOR'S MANUAL



CASE III

Electromagnetic compatibility (EMC)

This tractor fulfils EC Directives governing electromagnetic radiation.

However, interference can also be caused by auxiliary devices, which may not correspond to the standard regulations.

Because electromagnetic interference can seriously affect the function of the vehicle and/or give rise to dangerous situations, you **MUST** observe the following:

- Ensure that all equipment from third-party manufacturers fitted on the tractor carries the CE mark.
- The maximum output level of equipment that emits radiation (radios, telephones etc.) must not exceed the legal limits prescribed in the country in which you are operating the tractor.
- The electromagnetic field created by auxiliary equipment must never exceed 24V/m, particularly in proximity to electronic components.

Failure to comply with these requirements will render the Case IH warranty null and void.

CONTENTS

SECTION 1

GENERAL INFORMATION AND SAFETY

ECOLOGY AND THE ENVIRONMENT	1-5
SAFETY PRECAUTIONS	1-6
SAFETY LABELS	1-12
INTERNATIONAL SYMBOLS	1-17
AIRBORNE NOISE EMISSION	1-19

SECTION 2

CONTROLS, INSTRUMENTS AND OPERATION

BEFORE STARTING UP	2-1
CAB CONTROLS	2-2
PROGRAMMING THE DISPLAYS	2-50
GEARBOX OPERATION	2-56

SECTION 3

FIELD OPERATION

BEFORE STARTING UP	3-1
TOWING THE TRACTOR	3-3
TRANSPORTING THE TRACTOR	3-4
STARTING THE ENGINE	3-7
SWITCHING OFF THE ENGINE	3-10
CONSTANT ENGINE SPEED CONTROL	3-14
'TURN ASSIST' STEERING ASSISTANCE (where fitted)	3-16
REAR PTO	3-18
FRONT PTO AND HYDRAULIC POWER LIFT (where fitted)	3-33
ELECTRONIC FRONT POWER LIFT CONTROL EFH (where fitted).....	3-39
ELECTRONIC POWER LIFT CONTROL (EDC)	3-44
HEADLAND MANAGEMENT CONTROL (HMC)	3-58
HYDRAULIC REMOTE CONTROL VALVES	3-66
3-POINT POWER LIFT LINKAGE	3-76
LIFT RODS, LOWER AND UPPER LINKS	3-78
DRAWBARS AND TOWING ATTACHMENTS	3-86
REAR TOW HITCH	3-91
HYDRAULIC TRAILER BRAKES	3-103
PNEUMATIC TRAILER BRAKES	3-105
FRONT WHEEL TRACK ADJUSTMENT	3-111
REAR WHEEL TRACK SETTING	3-117
TRACTOR WEIGHT	3-123
TYRE AIR PRESSURE LEVELS AND PERMISSIBLE LOAD BEARING CAPACITIES	3-130

SECTION 4

LUBRICATION AND MAINTENANCE

GENERAL 4-1

LUBRICANTS AND COOLANTS 4-8

LUBRICATION AND MAINTENANCE TABLE 4-10

WHEN WARNING LIGHTS ARE ILLUMINATED 4-12

EVERY 10 OPERATING HOURS OR DAILY 4-15

EVERY 50 OPERATING HOURS 4-18

EVERY 100 OPERATING HOURS 4-26

EVERY 300 OPERATING HOURS 4-27

EVERY 600 OPERATING HOURS 4-33

EVERY 1200 OPERATING HOURS OR 12 MONTHS 4-39

EVERY 1200 OPERATING HOURS OR 2 YEARS 4-44

EVERY 1800 OPERATING HOURS 4-51

EVERY 3 YEARS 4-52

GENERAL MAINTENANCE 4-53

FUSES AND RELAYS 4-60

PROTECTION OF ELECTRONIC AND ELECTRICAL SYSTEMS WHEN CHARGING
THE BATTERY OR DURING WELDING WORK 4-65

SECTION 5

FAULT-FINDING

ENGINE 5-2

GEARBOX 5-5

HYDRAULICS 5-6

3-POINT POWER LIFT LINKAGE 5-7

BRAKES 5-8

CAB 5-9

ELECTRICAL SYSTEM 5-10

SECTION 6

VEHICLE STORAGE

TRACTOR STORAGE 6-1

SECTION 7

ADDITIONAL EQUIPMENT

SECTION 8

TRACTOR SPECIFICATIONS

VEHICLE WEIGHTS 8-6

ENGINE 8-7

FUEL SYSTEM 8-7

COOLING SYSTEM 8-7

GEARBOX 8-8

BRAKES 8-8

MAXIMUM OPERATING ANGLE 8-8

REAR PTO 8-8

FRONT PTO 8-9

HYDRAULIC SYSTEM 8-9

3-POINT POWER LIFT 8-10

REMOTE CONTROL VALVES 8-11

HYDRAULIC FRONT POWER LIFT (HPL) 8-11

STEERING SYSTEM 8-11

ELECTRICAL EQUIPMENT 8-12

MINIMUM TIGHTENING TORQUES OF SCREW CONNECTIONS 8-13

MINIMUM TIGHTENING TORQUES OF SCREW CONNECTIONS 8-14

SECTION 9

CHECKLIST FOR 50-HOUR INITIAL INSPECTION

SECTION 10

INDEX

SECTION 1

GENERAL INFORMATION AND SAFETY

TO THE OWNER

GENERAL

These operating instructions have been produced to provide you with instructions for correctly running in, driving and operating as well as for maintaining your new tractor. Please therefore read through these operating instructions carefully. The tractor is intended for all standard agricultural work.

Do not hesitate to contact your authorised dealer if you ever have any questions relating to your tractor. The dealer has trained specialist staff, genuine spare parts and the technical equipment required to satisfy all your servicing requirements.

In terms of concept and design, this tractor has been designed for maximum performance, economic viability and user-friendliness in a wide range of applications. It has been carefully inspected in the factory and by your authorised dealer before being delivered to ensure that the machine is in optimum technical condition. To make sure it stays in this condition and always operates correctly, it is important to carry out the maintenance work described in Section 4 of this operating manual at the specified intervals.

STORAGE OF OPERATING MANUAL

A storage pocket for the operating manual is located behind the seat. The manual should always be stored there when not in use.

CLEANING THE TRACTOR

Your tractor is a state-of-the-art machine with highly developed electronic operating controls. This should be borne in mind when cleaning the tractor, particularly if using a high-pressure cleaner. Even though every precaution has been taken to safeguard electronic components and connections, the pressure generated by some of these machines is such that complete protection against water ingress cannot be guaranteed. When using a high-pressure cleaner, do not stand too close to the tractor and avoid directing the jet at electronic components, electrical connections, seals, filler caps etc. Never direct a cold water jet at a hot engine or exhaust.

SAFETY

Pages from 1 - 6 to 1 - 11 cover the precautions which must be taken to ensure your own safety and that of others. Read the safety precautions and observe the advice given **before** operating the tractor.

FIRST 50 HOURS MAINTENANCE

The 50-hour maintenance reports can be found in section 9 at the back of this manual.

After 50 operating hours the tractor, together with this manual, should be taken to your dealer. The dealer will carry out the recommended 50-hour maintenance and fill in the maintenance reports (page 9 - 1 and page 9 - 3). The first sheet (page 9 - 1) is the dealer's copy and should be removed by the dealer after the maintenance has been carried out. The second sheet (page 9 - 3) is your copy of the maintenance which has been carried out. **Make sure that both you and the dealer sign both copies.**

SPARE PARTS

Your attention is drawn to the fact that only genuine spare parts have been tested by the manufacturer and have the corresponding certification. Installing and/or using non-genuine spare parts can impair the function of the tractor and put its operational safety at risk. The manufacturer accepts no liability for damage caused by the use of non-genuine spare parts or additional equipment. Only use genuine spare parts from CNH Case IH. In some cases, the use of non-genuine spare parts will render certain authorisations for the tractor void.

Modifications may only be made to the tractor with the written approval of the manufacturer's customer service department.

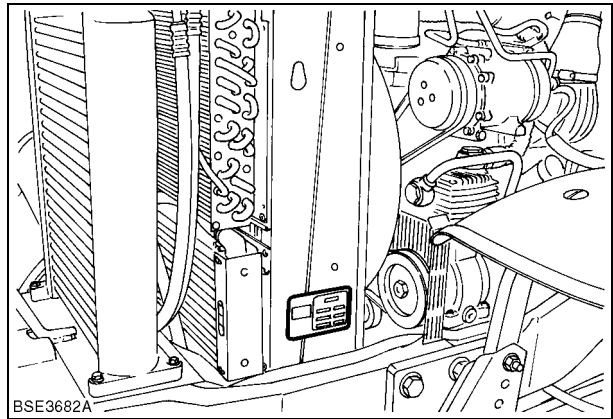
WARRANTY

The warranty for your tractor is based on the warranty legislation in your country and the contractual relationship with the dealer. However, the warranty shall expire if the tractor is not used, set up or maintained according to the instructions in the operating manual.

VEHICLE IDENTIFICATION

The tractor and its main assemblies are identified by means of serial numbers and/or manufacturing codes. These serial numbers and/or manufacturing codes are needed by the dealer for ordering spare parts and for service interventions. They also allow the tractor to be identified in the event of theft.

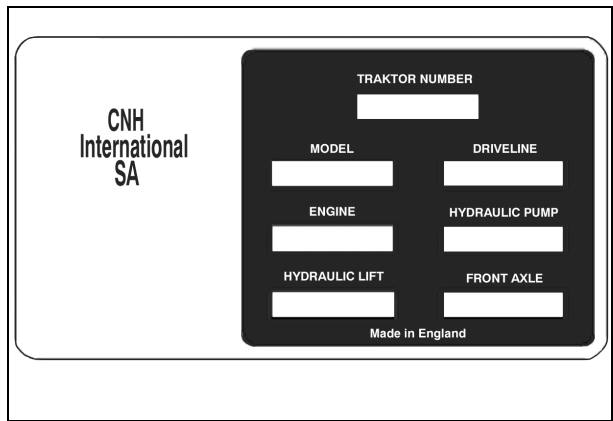
There now follows a description of the locations of the individual identification plates on the tractor.



1

Vehicle identification plate

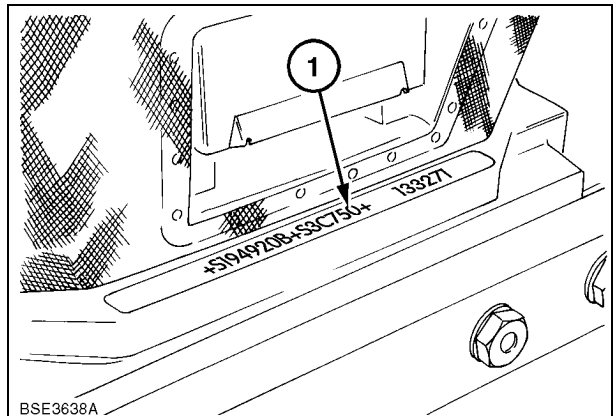
The tractor's type label (1) is located on the left-hand cooler support. Please enter the information on the type label reproduced below.



2

Tractor identification

The serial number and model identification details are stamped on to the top of the front support (1). These numbers also appear on the tractor's type label.

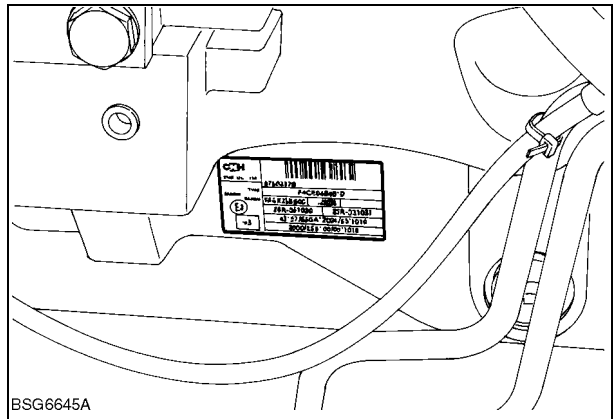


3

Engine number

The serial number and date code are stamped on to the engine plate.

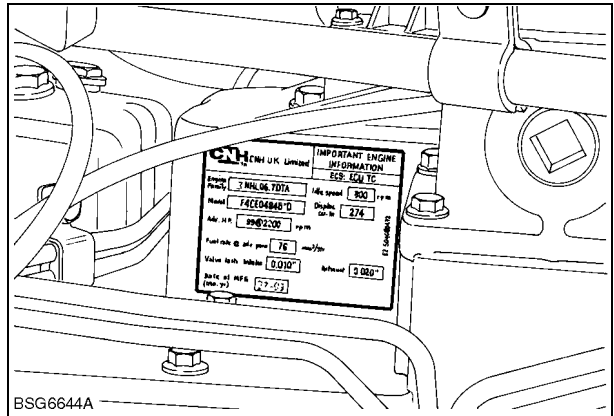
With the MXU 100 and MXU 115 models, the plate is located on the right-hand side of the oil pan.



BSG6645A

4

More information about the engine setting and exhaust standards can be found on the plate fitted on the left-hand side of the cylinder head cover.



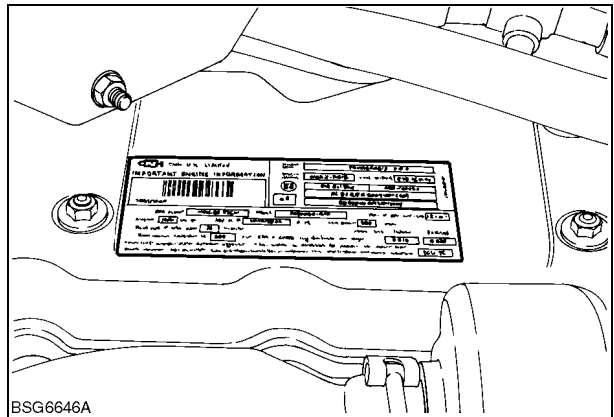
BSG6644A

5

With the MXU 110, MXU 125 and MXU 135 models, the plate is located at the top of the valve cover.

This information can also be found on the exhaust cleaning label on the engine oil pan and on the tractor's type label.

Engine serial no.

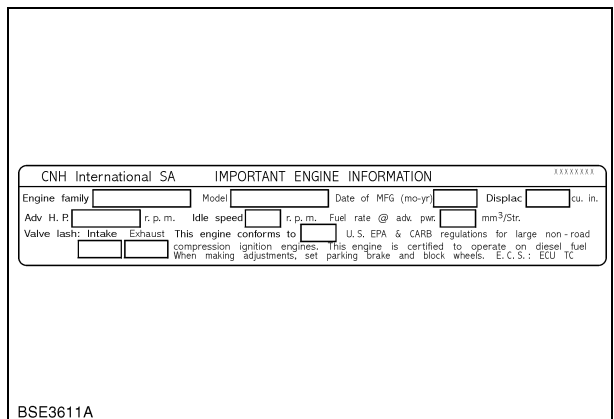


BSG6646A

6

Label for emission limits (MXU100 and MXU115)

Fitted on the left-hand side of the valve cover, the exhaust cleaning label contains information on the engine settings and compliance with any emission regulations which may apply.



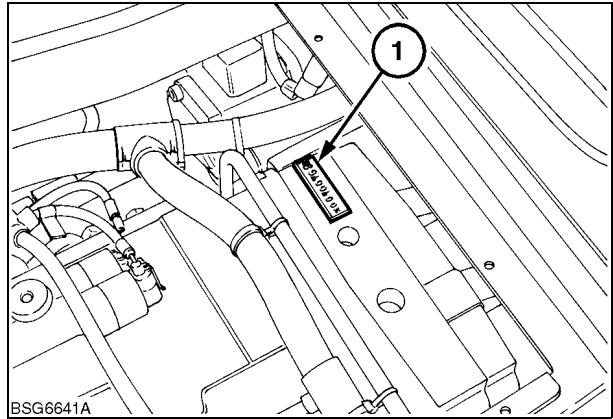
BSE3611A

7

Gearbox designation

The factory plate and serial number (1) can be found at the top of the gearbox housing. The number is accessible once you have removed the base plate from the cab as shown. The same number can be found on the vehicle identification plate. Enter the details in the following boxes so that you can refer to them at any time

Gearbox number.....

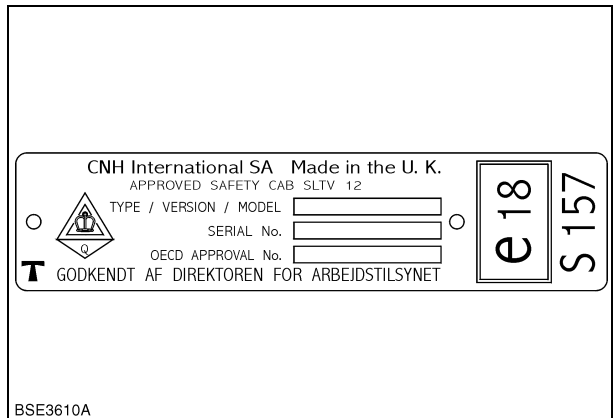


8

Cab identification

The serial number and other details can be seen on the OECD authorisation plate. This plate is located on the right-hand side of the cab trim panel below the rear windscreen. Enter the cab serial number below for easy reference.

Cab serial no.....

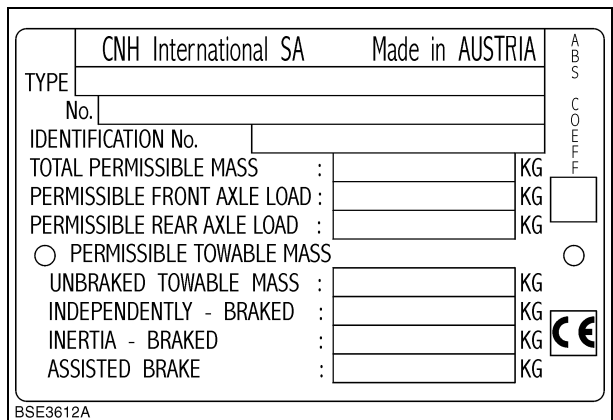


9

Details on vehicle weight

The vehicle weight plate contains important details on the permissible total weight of the tractor and trailers and/or trailed units. This plate is located on the right-hand side of the cab trim panel below the rear windscreen.

It gives the permissible maximum weights which must not be exceeded to avoid impairing the tractor's operating safety. ECOLOGY AND THE ENVIRONMENT



10

ECOLOGY AND THE ENVIRONMENT

Soil, air and water are all vital elements for agriculture and for life in general. In cases where legislation governing the handling of particular substances required by sophisticated technology has not been prescribed, common sense should be exercised when using and disposing of chemical and petrochemical products.

The following recommendations may be helpful:

- Familiarise yourself with the legislation applying in your country and make sure you understand it.
- In cases where no legislation yet exists, make sure you obtain the supplier's information for the oil, filters, batteries, fuel, antifreeze, cleaning agent etc. with regard to the effects on people and the environment and how these products should be safely stored, used and disposed of. Agricultural consultants will also be able to help you in many cases.

USEFUL HINTS

1. Avoid filling tanks using unsuitable containers or fuel delivery systems which are pressurised and therefore cause spillage.
2. Generally speaking, you should not allow oils, fuels, acids, solvents etc. to come into contact with the skin. Most of these substances contain elements which are hazardous to health.
3. Modern oils contain additives. Do not burn contaminated fuels and/or used oil in conventional heating systems.
4. Avoid spillage of engine coolant, engine/gearbox/hydraulic oil, brake fluids etc. Do not mix discharged brake fluids or fuels with lubricants. Store these in a safe place until such time as they can be disposed of in accordance with local regulations.
5. Modern coolant additives, i.e. antifreeze and other additives, should be replaced every two years. They must not be allowed to enter the ground but must be collected and disposed of safely.
6. Do not open up the air conditioning system. It contains gases which must not be allowed to escape into the atmosphere. Your dealer or air conditioning specialist will have a special extractor for this purpose and must always recharge the system.
7. Repair leaks or defects in the engine cooling system or hydraulics immediately.

8. Do not increase the pressure in a pressurised circuit because the parts could explode.
9. When welding, protect hoses, since these could be damaged by splashes, which could in turn lead to leaks developing (oil, coolant).

SAFETY PRECAUTIONS

The best operator is a careful operator. Most accidents can be avoided by observing certain precautions. To avoid accidents, read and observe the following precautions **before** driving, operating or servicing the tractor. Equipment should only be operated by persons who are responsible for it and who have received appropriate instruction.

SAFETY INSTRUCTIONS

In this manual you will find text preceded by the words **NOTE**, **ATTENTION**, **IMPORTANT**, **CAUTION**, **WARNING** or **DANGER**. The meaning of these texts is as follows:

MACHINE SAFETY

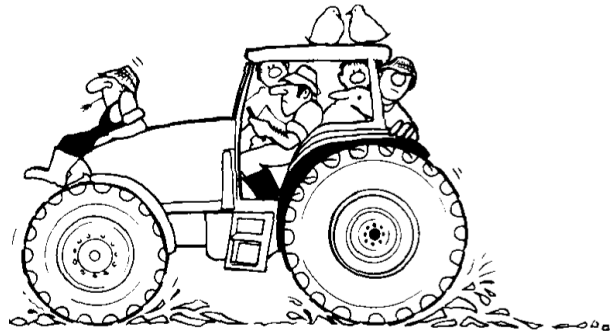
NOTE: THIS TEXT INDICATES THE CORRECT OPERATING TECHNIQUE OR PROCEDURE.

WARNING: THIS TEXT WARNS THE OPERATOR OF POSSIBLE MACHINE DAMAGE WHICH MAY OCCUR IF A CERTAIN PROCEDURE IS NOT FOLLOWED.

IMPORTANT: THIS TEXT TELLS THE READER ABOUT SOMETHING THEY NEED TO KNOW TO AVOID MINOR DAMAGE TO THE MACHINE WHICH MAY OCCUR IF A CERTAIN PROCEDURE IS NOT FOLLOWED.

THE TRACTOR

1. Before using the tractor, read the operating manual carefully. Inadequate knowledge about how to operate the machine can lead to accidents.
2. Only appropriately qualified and trained persons should be allowed to operate the tractor.
3. To avoid falls, use the handrails and footboards to climb in and out of the tractor. Keep the footboards and platform free of mud and earth debris.
4. Replace all missing, illegible or damaged safety labels.
5. Keep safety labels clean.



6. Do not allow anyone other than the operator to drive the tractor. This is only permitted for driver training or instruction. For these situations, the cab can be fitted with an extra seat. Never carry passengers in the tractor.
7. Always keep children away from the tractor and other agricultural equipment.
8. Do not attempt to undertake modifications to the tractor or any of its components or functions (or allow anyone else to do so) without first consulting your dealer.
9. Fit all protective fixtures before starting the engine or operating the tractor.

DRIVING THE TRACTOR

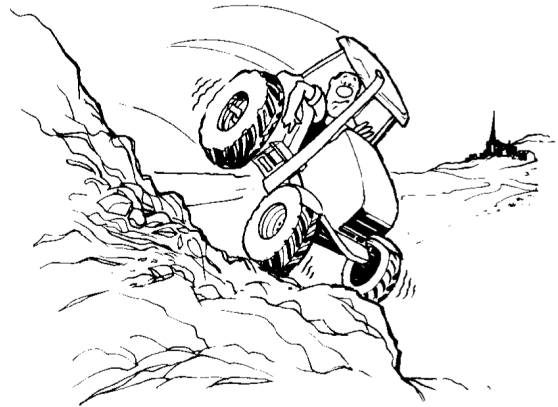
1. Always start and drive the tractor from the driver's seat.
2. Be aware of other road users when driving on public roads. Pull up from time to time to allow vehicles behind you to pass. Observe the speed limit for agricultural tractors in your country.
3. When driving on public roads, use an all-round light and/or warning plate for slow-moving vehicles to indicate to other road users that the vehicle is moving slowly and poses a potential hazard.

IMPORTANT: Local regulations should be observed regarding the use of all-round lights.

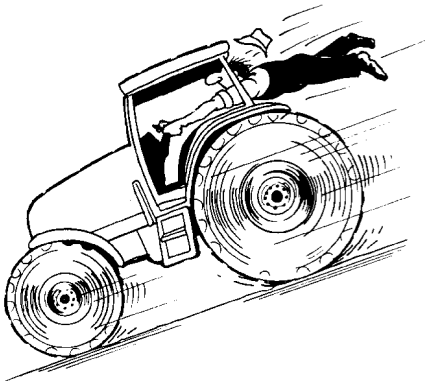
4. Dip your headlights whenever you encounter another vehicle at night. Ensure that the lights are adjusted such that drivers approaching from the opposite direction are not dazzled.
5. Reduce speed before braking or making a turn. For an emergency stop, brake with both wheels at the same time. When driving at road speeds or on public roads, ensure that both brake pedals are locked together to ensure correct function of the trailer brakes, balanced functioning of the tractor brakes and the four-wheel braking (tractors with 4-wheel drive only).



6. For tractors with all-wheel drive, the drive to the front axle is engaged automatically, transferring the braking effect to all four wheels whenever both brake pedals are applied. Owners should note that the effect of all-wheel braking significantly increases braking power. Exercise appropriate caution when braking forcefully.
7. When towing heavy loads at road speeds, perform forceful braking as carefully as possible.



13. Exercise particular caution when driving on steep slopes.
14. Should the tractor become stuck or the tyres be frozen to the ground, reverse the tractor out of difficulty to prevent it from overturning.



8. When travelling downhill, keep the tractor in the same gear as you would use for driving uphill. Do not allow the tractor to coast.
9. To ensure safe operation, a towed vehicle with a total weight greater than that of the tractor must be fitted with a braking system in accordance with national regulations.
10. Never use the differential lock when turning. If the differential lock is engaged, the tractor cannot turn.
11. Always check your overhead clearance, especially when transporting the tractor. Pay due attention to where you are driving, particularly at the ends of rows, on roads, round about trees and below low overhanging obstacles.
12. To prevent the tractor from overturning, always drive with due care and at an appropriate speed, particularly on uneven ground, over ditches and round bends.

Buy Now



Our support email:

ebooklibonline@outlook.com