

MX Series Magnum Tractors MX215, MX245, MX275 and MX305

Operator's Manual

87393890

CASE IH




THIS SAFETY ALERT SYMBOL INDICATES IMPORTANT SAFETY MESSAGES IN THIS MANUAL. WHEN YOU SEE THIS SYMBOL, CAREFULLY READ THE MESSAGE THAT FOLLOWS AND BE ALERT TO THE POSSIBILITY OF DEATH OR SERIOUS INJURY.

M171C

If Safety Decals on this machine use the words **Danger, Warning or Caution**, which are defined as follows:

- **DANGER:** Indicates an immediate hazardous situation that, if not avoided, will result in death or serious injury. The color associated with Danger is RED.
- **WARNING:** Indicates a potentially hazardous situation that, if not avoided, could result in death or serious injury. The color associated with Warning is ORANGE.
- **CAUTION:** Indicates an potentially hazardous situation that, if not avoided, may result in minor or moderate injury. It may also be used to alert against unsafe practices. The color associated with Caution is YELLOW.

If Safety Decals on this machine are ISO two panel pictorial, decals are defined as follows:

- The first panel indicates the nature of the hazard.
- The second panel indicates the appropriate avoidance of the hazard.
- Background color is YELLOW.
- Prohibition symbols such as   and  if used, are RED.



WARNING

IMPROPER OPERATION OF THIS MACHINE CAN CAUSE DEATH OR SERIOUS INJURY. BEFORE USING THIS MACHINE, MAKE CERTAIN THAT EVERY OPERATOR:

- Is instructed in safe and proper use of the machine.
- Reads and understands the Manual(s) pertaining to the machine.
- Reads and understands ALL Safety Decals on the machine.
- Clears the area of other persons.
- Learns and practices safe use of machine controls in a safe, clear area before operating this machine on a job site.

It is your responsibility to observe pertinent laws and regulations and follow CNH America LLC instructions on machine operation and maintenance.

CASE IH TECHNICAL MANUALS

Manuals are available from your Dealer for the operation, service and repair of your machine. For prompt, convenient service, contact your Dealer for assistance in obtaining the manuals for your machine.

Your Dealer can expedite your order for operator's manuals, parts catalogs, service manuals and maintenance records.

Always give the Machine Name, Model and P.I.N. (product identification number) or S.N. (serial number) of your machine so your Dealer can provide the correct manuals for your machine.

CALIFORNIA

Proposition 65 Warning

Diesel engine exhaust and some of its constituents are known to the State of California to cause cancer, birth defects, and other reproductive harm.

Battery posts, terminals and related accessories contain lead and lead compounds. Wash hands after handling.

NOTE: CNH America LLC reserves the right to make improvements in design or changes in specifications at any time without incurring any obligation to install them on units previously sold.

GENERAL TABLE OF CONTENTS

1 – TO THE OWNER	1
STATEMENT OF TRACTOR INTENDED USE	1
OPERATOR'S MANUAL STORAGE COMPARTMENT	1
PRODUCT IDENTIFICATION AND SERIAL NUMBERS	3
MACHINE COMPONENTS	5
BUSINESS BAND RADIOS	7
2 – SAFETY/DECALS	9
SAFETY RULES	9
PERSONAL SAFETY	12
INSTRUCTIONAL SEAT SAFETY	12
MAINTENANCE SAFETY	13
FIRE SAFETY	13
BATTERY SAFETY	13
MACHINE OPERATION AND ROLL-OVER SAFETY	14
HAZARDOUS CHEMICALS	14
SAFETY DECALS	15
ROLLOVER PROTECTIVE STRUCTURE (ROPS)	20
CAB STRUCTURAL FRAME (CSF)	20
CLEANING CAB WINDOWS	21
INTERIOR REAR VIEW MIRROR	21
SEAT BELTS	22
TRACTOR WARNING LAMPS AND SLOW MOVING VEHICLE (SMV) SYMBOL	23
IMPLEMENT WARNING LAMPS AND SMV SYMBOL	26
SAFETY CHAIN	27
3 – OPERATING CONTROLS	29
TRACTOR ACCESS	29
OPERATOR SEAT CONTROLS	30
INSTRUCTIONAL SEAT (IF EQUIPPED)	32
STEERING COLUMN CONTROLS	33
CENTER CONSOLE CONTROLS	35
FOOT PEDALS	37
RIGHT HAND CONSOLE CONTROLS	38
ARMREST CONSOLE CONTROLS	45
RIGHT HAND FENDER CONTROLS	48
AUTOMATIC TEMPERATURE CONTROL SYSTEM (IF EQUIPPED)	54
REAR WINDOW	59
DOME LAMP	59
MAP LAMP (IF EQUIPPED)	60
CD PLAYER - 6-DISC (IF EQUIPPED)	60
RADIO (IF EQUIPPED)	60
SUN SHADE (IF EQUIPPED)	61
INTERIOR REAR VIEW MIRROR	61
EXTENDABLE MIRRORS (IF EQUIPPED)	61
UTILITY CONSOLE	62
4 – INSTRUMENTATION	63
INSTRUMENTATION CLUSTER	63
PROGRAMMING THE DISPLAY MONITOR	69
OPERATOR ADJUST MENU	74
WARNING/FAULT DISPLAYS	77
INSTRUMENTATION CLUSTER	83

5 – OPERATING INSTRUCTIONS	97
BEFORE STARTING THE ENGINE	97
SERVICE INDICATOR LAMPS AND DISPLAYS	98
SEAT BELTS	99
STARTING THE ENGINE	100
STOPPING THE ENGINE	102
COLD TEMPERATURE OPERATION	103
POWER SHIFT TRANSMISSION	106
TRANSMISSION	107
SHUTTLE SHIFTING	110
AUTOSHIFT OPERATION	113
SUSPENDED MFD AXLE OPERATION (IF EQUIPPED)	117
CUSHION HITCH RIDE CONTROL OPERATION (IF EQUIPPED)	118
CONSTANT ENGINE SPEED OPERATION	120
TOWING THE TRACTOR	121
HOW TO TRANSPORT THE TRACTOR	124
6 – FIELD OPERATION	125
GENERAL PROCEDURES FOR CONNECTING IMPLEMENTS	125
POWER TAKEOFF (PTO)	127
THREE POINT HITCH	136
HITCH OPERATION	152
DRAWBAR PREPARATION	167
REMOTE HYDRAULICS	173
LOADER OPERATION	190
CHEMICAL TANK MOUNTING	191
AUXILIARY POWER CONNECTIONS	193
MONITOR MOUNTING	196
GROUND SPEED SENSOR CONNECTOR	197
TRAILER BRAKE CONNECTOR (IF EQUIPPED)	198
CAB STEPS	200
7 – IN-FIELD PERFORMANCE	203
DIFFERENTIAL LOCK	203
MFD OPERATION	206
BALLASTING YOUR TRACTOR FOR OPTIMUM PERFORMANCE	210
WHEEL SLIP	234
POWER HOP	236
MECHANICAL FRONT DRIVE (MFD) AXLES	237
MFD STEERING AND OSCILLATION STOPS	244
FRONT WHEEL FENDERS (IF EQUIPPED)	252
REAR AXLE	256
TRACTOR JACKING POINTS	259
REAR WHEEL TREAD SETTING - SINGLES	261
REAR WHEEL TREAD SETTING - DUALS	263
REAR WHEEL TREAD SETTING - TRIPLES	272
8 – LUBRICATION/FILTERS/FLUIDS/MAINTENANCE	275
ENVIRONMENT	275
PLASTIC AND RESIN PARTS	275
TOOL BOX (IF EQUIPPED)	275
SYSTEM CAPACITIES	276
OPENING THE HOOD	280
LUBRICATION/MAINTENANCE CHART	282

9 – ELECTRICAL SYSTEM	329
SPECIFICATIONS	329
RADIO REGIONAL PROGRAMMING	333
BATTERY SYSTEM SERVICING	334
BULB AND LAMP REPLACEMENT	337
10 – SPECIFICATIONS	353
DIESEL ENGINE	353
POWER TRAIN	354
TRAVEL SPEEDS	357
MAXIMUM RECOMMENDED OPERATING WEIGHTS	360
INDEX	363

TO THE OWNER

This manual contains important information about the safe operation, adjustment and routine maintenance of your Case IH MX Magnum Series Tractor. The manual is divided into ten sections as outlined in the General Table of Contents Page(s). Refer to the Detail Index at the end of this manual for locating specific items about your tractor.

DO NOT operate or permit anyone to operate or service this machine until you or the other persons have read this manual. Use only trained operators who have demonstrated the ability to operate and service this machine correctly and safely.

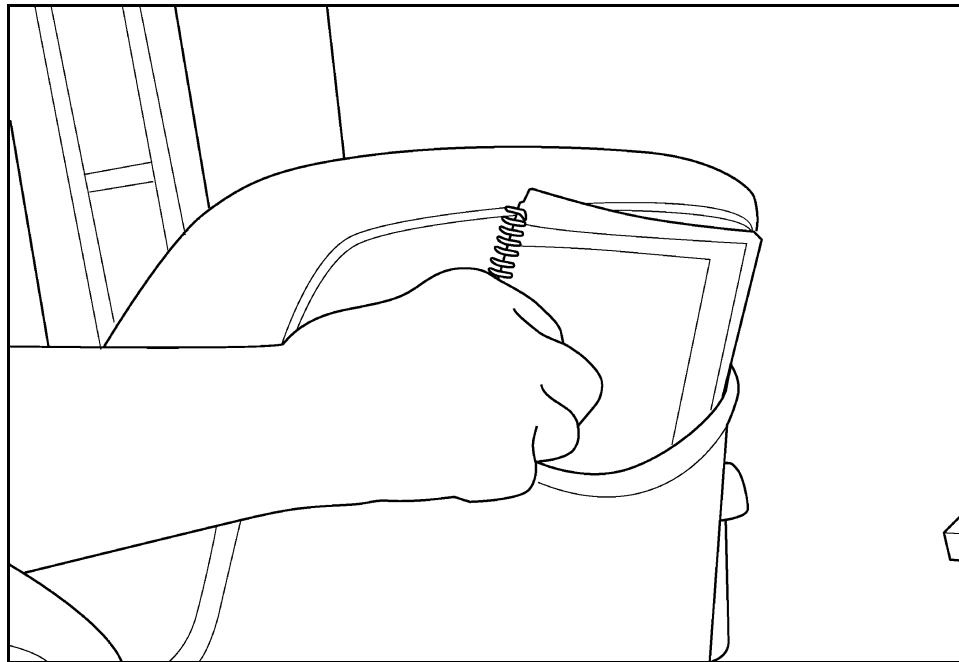
This Operator's Manual should be stored in the manual compartment on this machine. Make sure this manual is in good condition. Contact your Case IH dealer to obtain additional manuals. Contact your dealer for any further information or assistance about your machine. Your dealer has Case IH approved service parts. Your dealer has technicians with special training that know the best methods of repair and maintenance for your tractor.

STATEMENT OF TRACTOR INTENDED USE

The Case IH MX Magnum Series Tractor, with standard equipment and authorized attachments, is intended to be used for customary farming, land leveling and related agriculture operations. Do not use this machine for any purpose other than those described in this manual.

Consult an authorized dealer or Case IH on changes, additions or modifications that may be required for this machine to comply with various regulations and safety requirements. Unauthorized modifications will cause serious injury or death. Anyone making such unauthorized modifications is responsible for the consequences.

OPERATOR'S MANUAL STORAGE COMPARTMENT

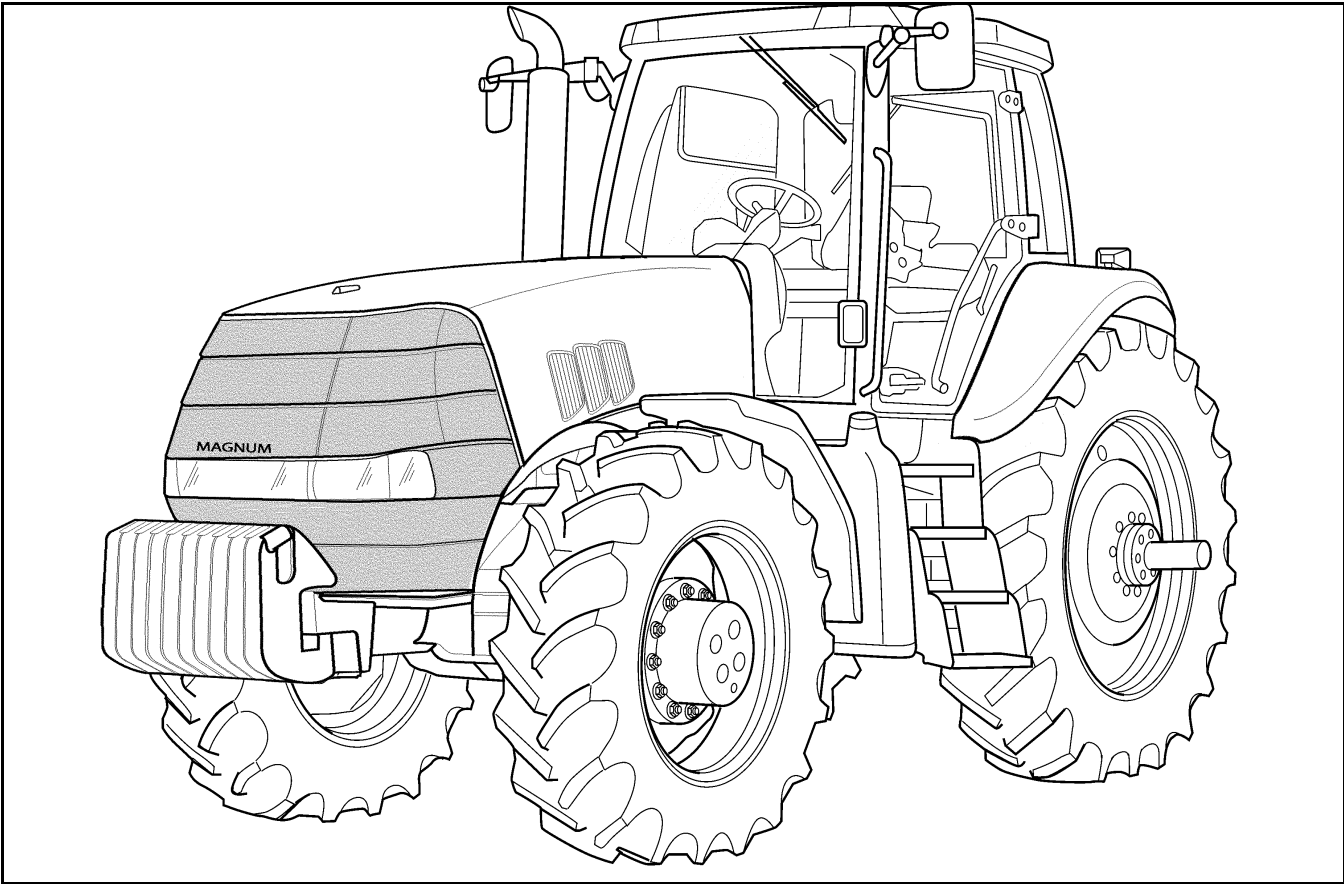


MK99H025

Keep the Operator's Manual in the storage compartment provided on your tractor. The Operator's Manual must be available for use by all operators.

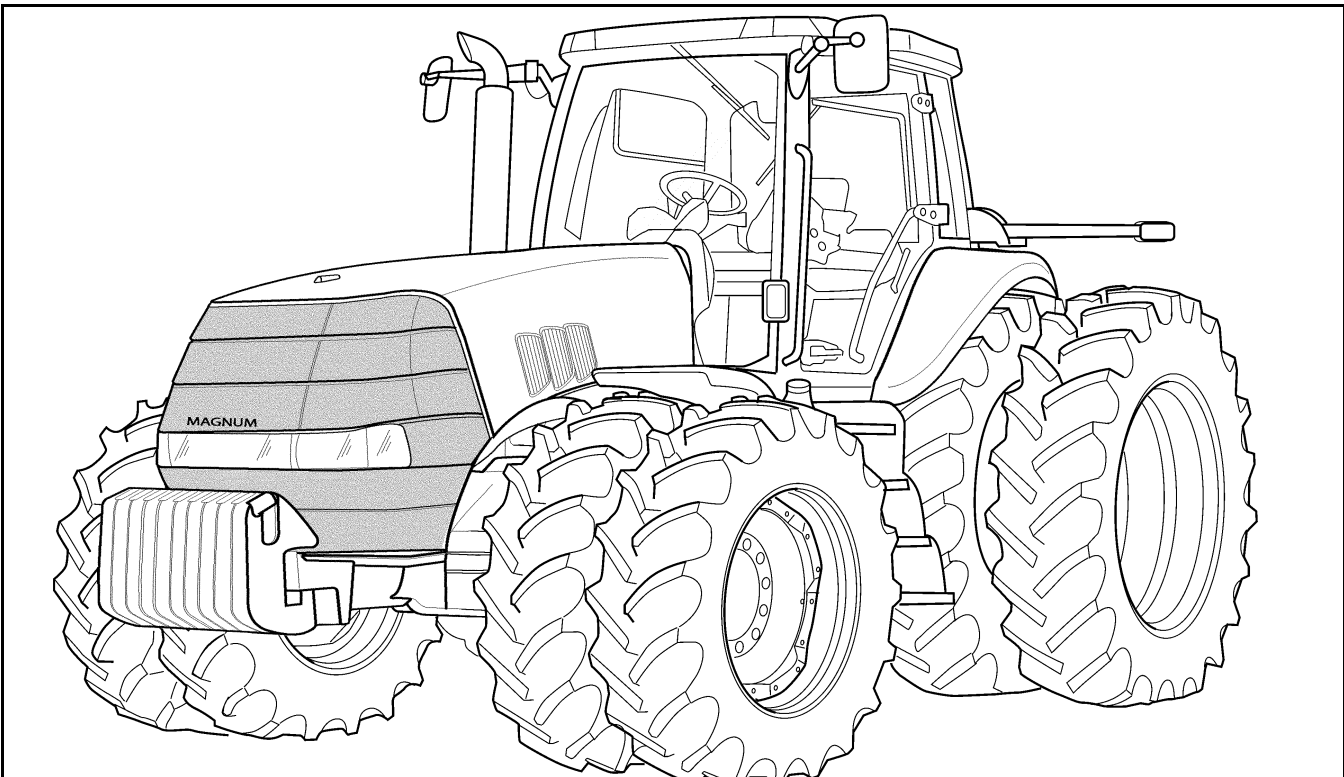
NOTE: The right hand and left hand side of the tractor used in this manual are the same as your right hand and left hand when sitting in the tractor seat looking forward.

MX SERIES MAGNUM TRACTOR



MX Magnum Tractor

RH02H168



MX Magnum Tractor with Front and Rear Duals

RH02H170

PRODUCT IDENTIFICATION AND SERIAL NUMBERS

Write your tractor Model Number, Product Identification Number (P.I.N.) and Serial Numbers of major components on the lines provided.

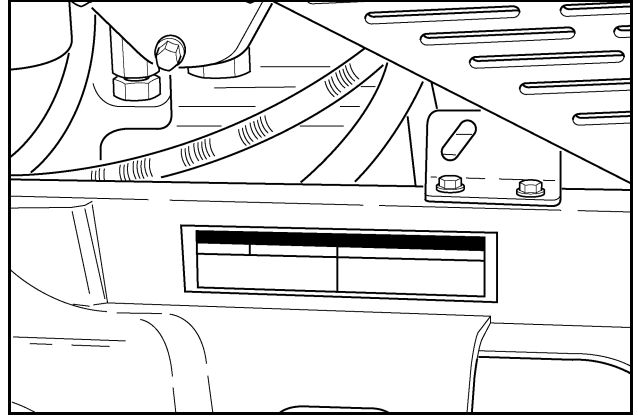
If needed, give these numbers to your Case IH dealer when you need parts or information for your machine.

TRACTOR MODEL AND PRODUCT IDENTIFICATION NUMBER

Model: _____

P.I.N. *: _____

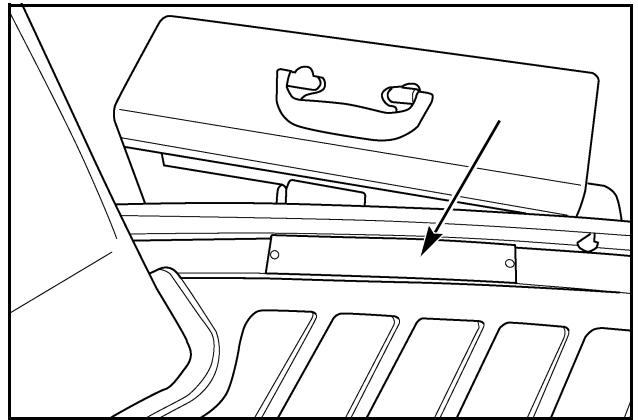
Located on right hand front frame casting.



RH02H283

ROLL OVER PROTECTION SYSTEM (ROPS) SERIAL NUMBER

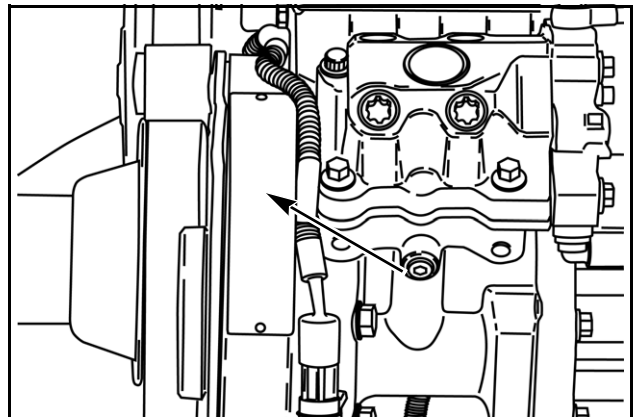
Located on the right hand cab floor.



RH02H174

ENGINE SERIAL NUMBER

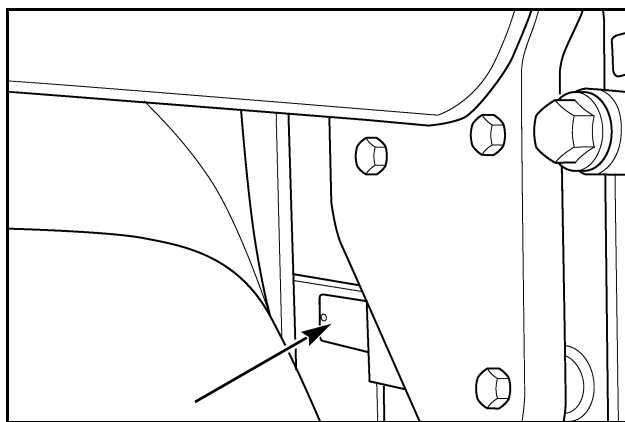
Located on front left hand side of engine.



RD05J163

TRANSMISSION SERIAL NUMBER

Located on the right hand side of the transmission behind the fuel tank and to the left of the ground stud.

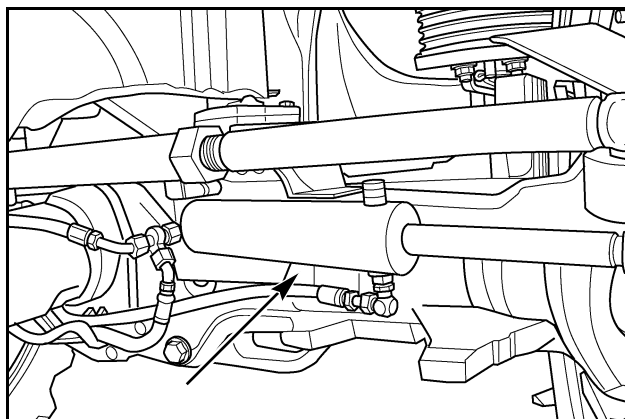


RH02H176

AXLE SERIAL NUMBER

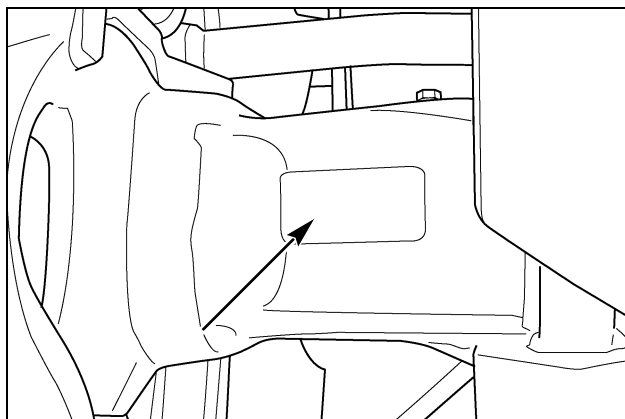
MFD AXLE: Located on the rear right hand side of the axle housing.

SUSPENDED AXLE: Located on the front right hand side of the axle housing.



RH02H178

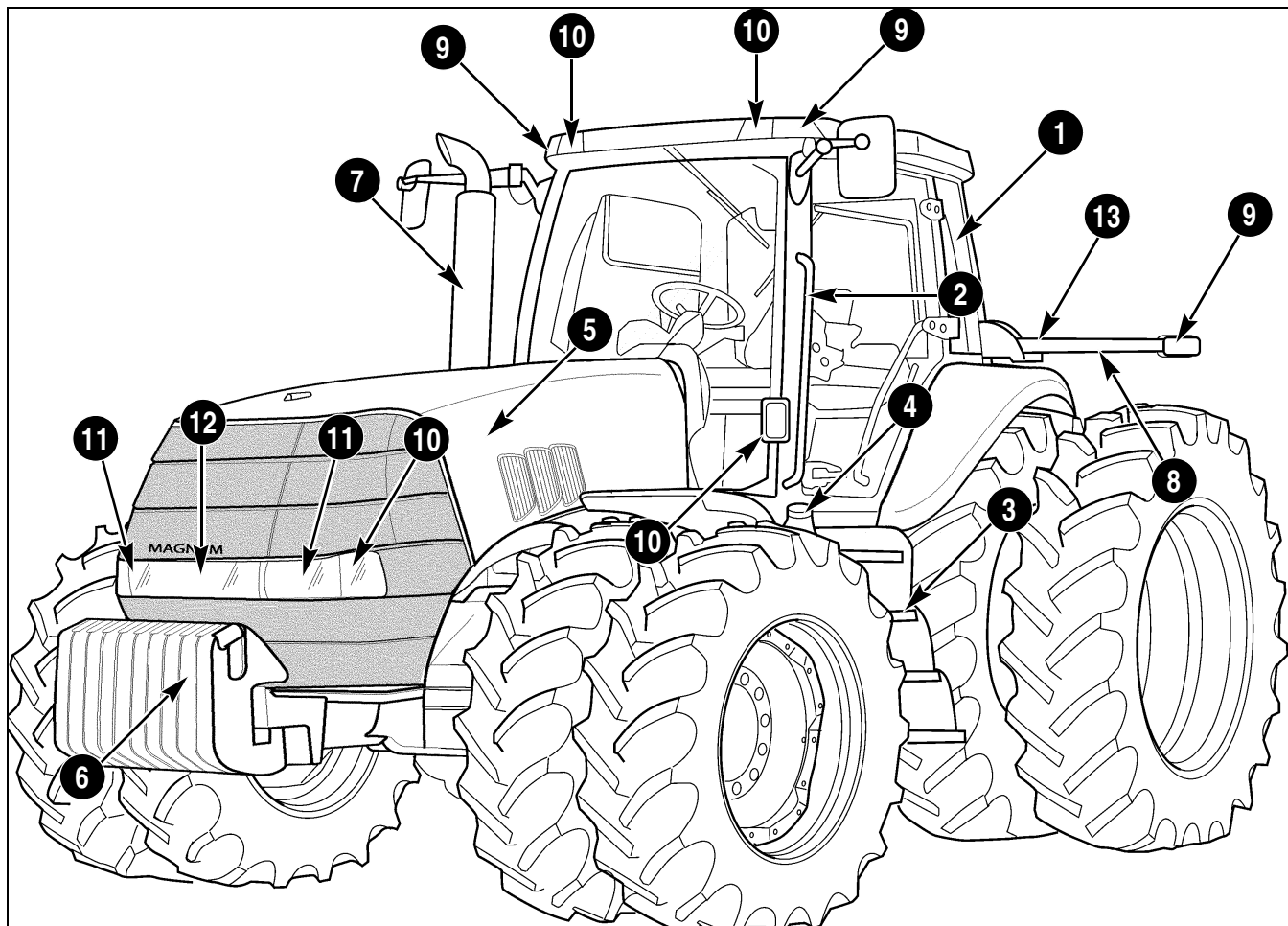
MFD Axle



RH02G351

Suspended Axle

MACHINE COMPONENTS



RH02H170

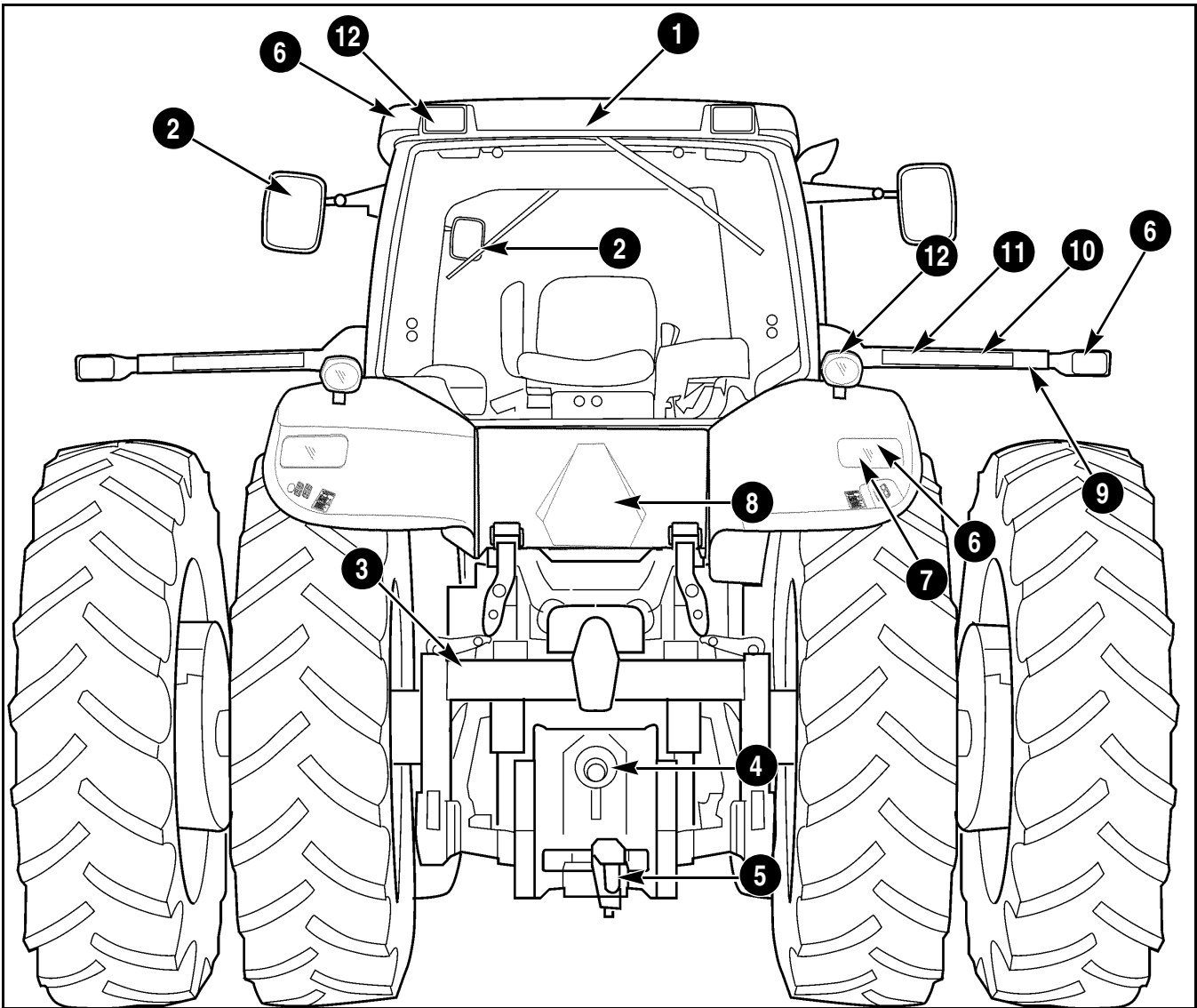
- 1. ROPS CAB
- 2. HAND RAIL
- 3. STEPS
- 4. FUEL TANK

- 5. HOOD
- 6. FRONT WEIGHTS
- 7. EXHAUST STACK
- 8. WIDE TRANSPORT MARKER

- 9. AMBER WARNING LAMP
- 10. WORK LAMPS
- 11. ROAD/WORK LAMPS
- 12. HID LAMP

- 13. AMBER REFLECTOR

1 - TO THE OWNER



RH02H171

- 1. ROPS CAB
- 2. REAR VIEW MIRROR
- 3. REAR HITCH

- 4. POWER TAKEOFF (PTO)
- 5. DRAWBAR
- 6. AMBER WARNING LAMPS

- 7. TAIL AND BRAKE LAMP
- 8. SMV SYMBOL
- 9. WIDE TRANSPORT MARKER

- 10. RED REFLECTOR
- 11. ORANGE REFLECTOR
- 12. ROOF AND FENDER WORK LAMPS/HID LAMPS

BUSINESS BAND RADIOS

The power supply harness and antenna cable with low profile mount for a business band radio are installed in tractors equipped with the business radio ready option. The business band radio, radio mounting bracket, and antenna are owner supplied.

The recommended mounting location for the business band radio is under and to the right of the AM/FM radio. The bracket supplied with the business band radio must be used.

The AM/FM radio must be removed for access to the power and antenna harnesses and for proper positioning of the bracket. Mount the business radio bracket to the AM/FM radio-mounting bracket (hidden by the headliner). Attach the microphone to the same bracket or the business band radio.

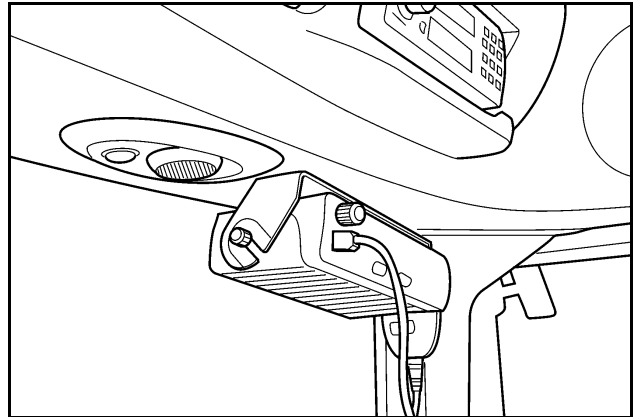
NOTE: When drilling mounting holes, do not damage any wiring harnesses. Use blunt tip screws of an appropriate length to install the bracket and avoid contact with the AM/FM radio or harnesses.

Route the power and antenna harnesses to the business band radio. Drill a hole through the headliner at this location, and use a grommet to protect the wires and cover the hole. The antenna mast mounting stud (1) is located on the cab roof near the operator's door. Remove the protective cap and install the antenna on the threaded stud.

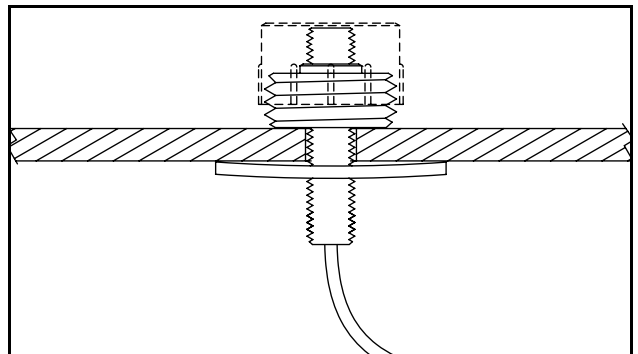
The stud is already wired with RF-58/U cable, which is routed behind the AM/FM radio for easy connection to your business band radio.

NOTE: The antenna mast must be purchased locally and must be compatible with an Antenna Specialist Model K-794 low profile antenna mount. See Antenna Specialists at www.antenna.com for additional information.

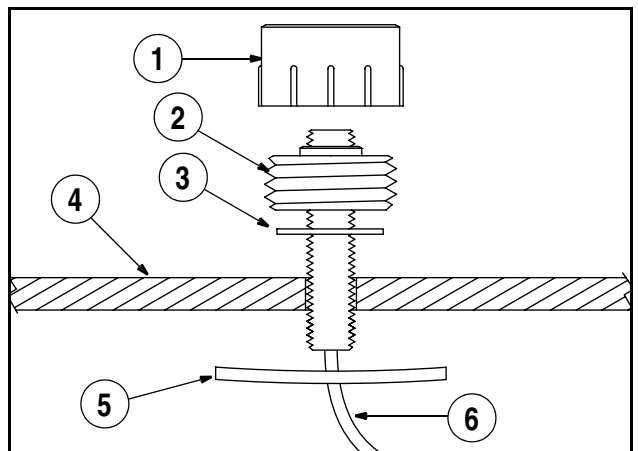
NOTE: See your Case IH dealer for additional information and procedures for installing a business band radio if your tractor is not business band radio ready.



RH02H164



RG02H173



RI02H010

- | | |
|-------------------|----------------------|
| 1. PROTECTIVE CAP | 4. CAB ROOF |
| 2. MOUNTING STUD | 5. THREADED FASTENER |
| 3. O-RING | 6. CABLE |

Buy Now



Our support email:

ebooklibonline@outlook.com