

# OPERATOR'S MANUAL

---

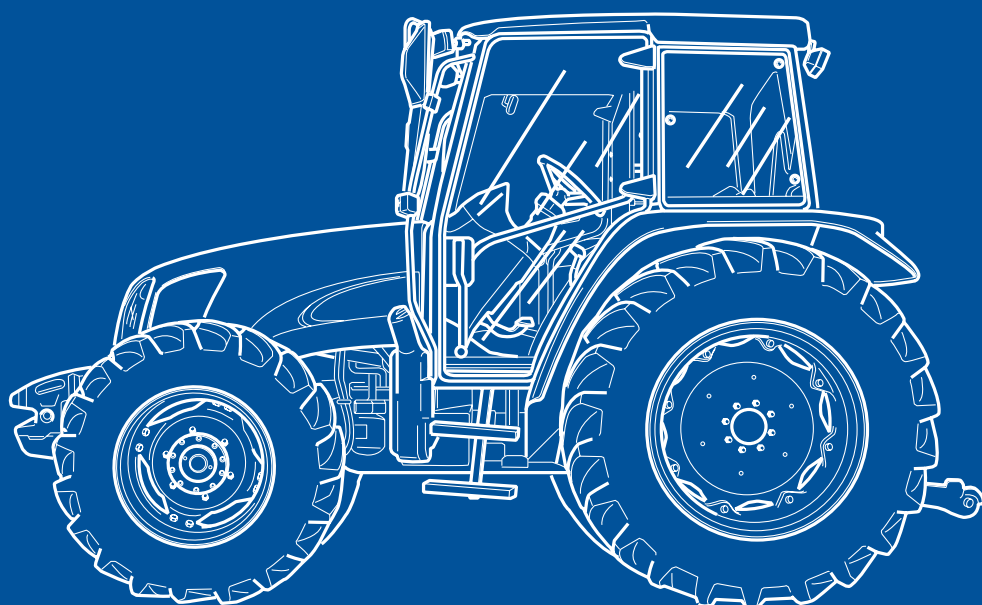
**NEW HOLLAND**

**TL70A**

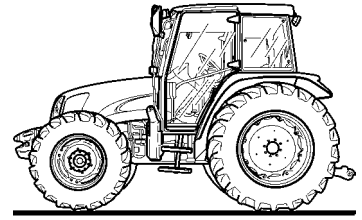
**TL80A**

**TL90A**

**TL100A**



**NEW HOLLAND**



**NEW HOLLAND**

**TL70A**

**TL80A**

**TL90A**

**TL100A**

**USE  
MAINTENANCE  
CHARACTERISTICS**



**NEW HOLLAND**

# SECTION SUMMARY

- 1 – Introduction and safety measures**
- 2 – General Information, Controls and Instruments**
- 3 – Field operation**
- 4 – Lubrication and Maintenance**
- 5 – Troubleshooting**
- 6 – Vehicle storage**
- 7 – Accessories**
- 8 – Specifications and Data**
- 9 – First 50 hour Service Forms**
- 10 – Alphabetical Index**



COLOURS	
COLOUR	ABBR.
BLACK	M-1724-P
DARK GREY	RAL-7024
GREY	RAL-7015
WHITE	TA/21
NEW HOLLAND BLUE	86593620

---

## Electromagnetic Interference (EMC)

This tractor complies strictly with the European Regulations on electromagnetic emissions.

However, interference may arise as a result of add-on equipment which may not necessarily meet the required standards.

As such interference can result in serious malfunction of the unit and/or create unsafe situations, you must observe the following:

- Ensure that each piece of non-New Holland equipment fitted to the tractor bears the mark.



- The maximum power of electromagnetic emission equipment (radio, telephones, etc.) must not exceed the limits imposed by the national authorities of the country where you use the tractor.
- The electromagnetic field generated by the add-on system should not exceed 24 V/m at any time and at any location in the proximity of electronic components.

Failure to comply with these rules will render the New Holland warranty null and void.

---

# CONTENTS

Section – Page

## SECTION 1

Communications for the user .....	1-1
Tractor identification .....	1-2
Important ecological considerations .....	1-5
Always work safely .....	1-6
Working safely .....	1-7
Safety decals .....	1-13
Standard symbols .....	1-18
Tractor noise level information sheet .....	1-19

## SECTION 2

General notes, controls and instruments .....	2-1
Before using the tractor .....	2-1
Control panel .....	2-2
Control panel .....	2-3
Operating controls .....	2-35
Seat adjustment .....	2-38
Cab .....	2-43
Air conditioned cab .....	2-52
Gearbox transmission .....	2-56
Transmission with range gear – 18.64 mph (30 km/h) (12F + 4R – Synchro command) .....	2-57
Transmission with range gear and shuttle – 18.64 mph (30 km/h) (12F + 12R – Synchro shuttle) .....	2-60
Transmission with creeper and shuttle – 18.64 mph (30 km/h) (20F + 12R – Synchro shuttle) .....	2-63
Transmission with Dual Command (2 Speed Power Shift) – 18.64 or 24.85 mph (30 or 40 km/h) (24 F + 12 R) .....	2-66
Transmission with dual command (2 Speed Power Shift) / electro-hydraulic power-shuttle 18.64/24.85 mph (30/40 km/h (24F + 24R) .....	2-70
Fast transmissions 24.85 mph (40 km/h) .....	2-80

## SECTION 3

Field operation .....	3-1
Starting in low outside temperature conditions .....	3-2
Starter key switch .....	3-3
Starting with grid heater on request .....	3-3
Electrohydraulically controlled four-wheel drive .....	3-6
Rear mechanical differential lock (with mechanical control – standard) .....	3-8
Braking system .....	3-11
Power take-off .....	3-17
Mechanically operated hydraulic lift .....	3-25
Electronically controlled hydraulic lift .....	3-29
Three-point linkage .....	3-38
Implement connection points .....	3-43
Auxiliary remote control valves .....	3-44

---

Auxiliary remote control valves (De Luxe version) .....	3-47
Track adjustment .....	3-49
Tyre sizes .....	3-65
Tyre combinations .....	3-67
Ballast .....	3-70
Permitted maximum weights .....	3-75

## **SECTION 4**

Lubrication and maintenance .....	4-1
Access for inspection and maintenance .....	4-5
Lubrication and maintenance table .....	4-6
Instrument panel warning lights .....	4-8
Every 10 hours of work .....	4-11
Every 50 hours of work .....	4-15
Every 300 hours of work .....	4-19
Every 600 hours of work .....	4-24
Every 1200 hours or every year .....	4-26
Every 1200 hours or every 2 years .....	4-27
Every 1800 hours of work .....	4-32
General Maintenance .....	4-33
Electrical system .....	4-38
Recommendations for bodywork maintenance .....	4-55
Consumables .....	4-56

## **SECTION 5**

Engine .....	5-2
Electrical system .....	5-5
Hydraulic circuit .....	5-6
Hydraulic lift and 3-point linkage .....	5-7
Braking system .....	5-8
Cab .....	5-8

## **SECTION 6**

Prolonged tractor inactivity .....	6-1
------------------------------------	-----

---

## **SECTION 7 – ACCESSORIES**

Quick fit implement linkage .....	7-2
Towing equipment .....	7-4
Fold-down roll bar .....	7-12
Joystick for auxiliary control valves (optional) .....	7-13
Front loader prearrangement .....	7-15
Control valve for trailer hydraulic brakes .....	7-16

## **SECTION 8 – SPECIFICATIONS AND DATA**

## **SECTION 9 – FIRST 50-HOUR SERVICE**

## **SECTION 10 – ALPHABETICAL INDEX**

# SECTION 1

## NOTICE TO USERS

### GENERAL GUIDELINES

This Use and Maintenance Manual provides a guide for the user with regard to running-in, use and maintenance of the tractor.

Read this manual carefully and keep in a convenient place for future reference. Do not hesitate to contact your local dealer for any queries concerning your tractor. The dealer can provide skilled personnel, trained by the manufacturer, original service parts and all tools and equipment necessary for your service requirements.

The tractor is designed as a power generator and drive-propulsion unit for use in normal and traditional agricultural conditions.

The tractor is also designed to provide maximum performance, economic running and easy use over a wide range of operations. Prior to delivery, all machines are carefully inspected (by both the Manufacturer and your local authorised dealer), to make sure that they reach the user in perfect condition. To maintain the tractor in this condition and ensure trouble-free operation, the routine maintenance described in Section 3 of this manual must be carried out at the specified intervals.

### CLEANING THE TRACTOR

Your tractor is an advanced machine, fitted with an electrohydraulic control system. Care must be taken when cleaning the tractor, especially if a pressurized water cleaner is used.

- Never stand too close to the tractor or direct the water jet on electrical components, seals or intake openings, etc.
- Never direct jets of cold water at the hot engine or exhaust. See also page 4–55 (RECOMMENDATIONS FOR BODYWORK MAINTENANCE).

### SAFETY

Safety precautions for the operator and bystanders are shown on page vi to xii inclusive. Read the safety instructions and follow recommendations and hints **before** starting to use the tractor.

### FIRST 50 – HOUR SERVICE

The operations required for the first service are shown at the end of the Manual, immediately prior to the index.

After the first 50 hours of use, return to the dealer with your tractor and this Manual in order to carry out the Manufacturer's checks and to fill in the certificates included on pages 1 and 3. The first sheet (page 1) must be compiled on completion of the service and held by the dealer. The second sheet (page 3) must be kept in the Manual for documentation and reference purposes. **Check that both copies are signed by both yourself and the dealer.**

### SERVICE PARTS

"Non-original" spare parts have not been tested or authorised by the Manufacturer. Installment and/or use of such products may adversely affect the tractor's design specifications, thereby compromising operational safety. The manufacturer cannot be held responsible for any damage resulting from the use of "non-original" spare parts.

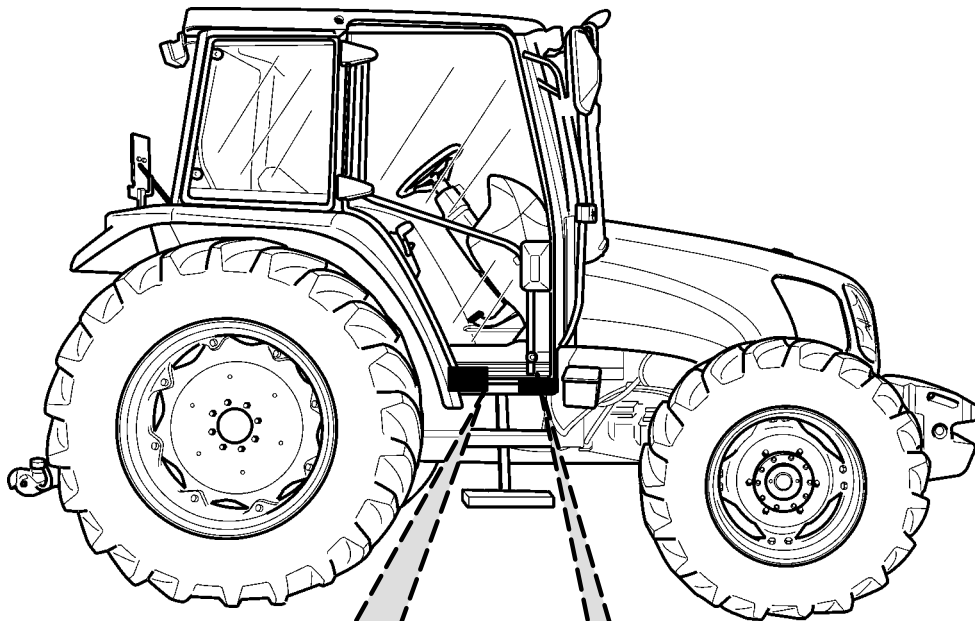
No modifications may be made to the tractor without written authorisation from the Manufacturer.

### WARRANTY

The tractor is guaranteed in accordance with current legislation in your country and in line with contractual agreements reached with the dealer at the time of sale. However, the warranty is no longer valid if the rules and instructions for the use and maintenance of the tractor, described in this Manual, are not observed.





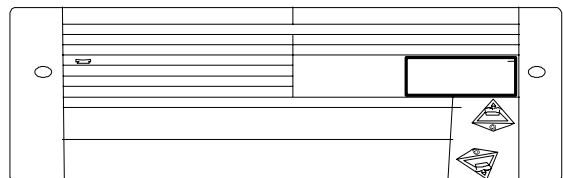


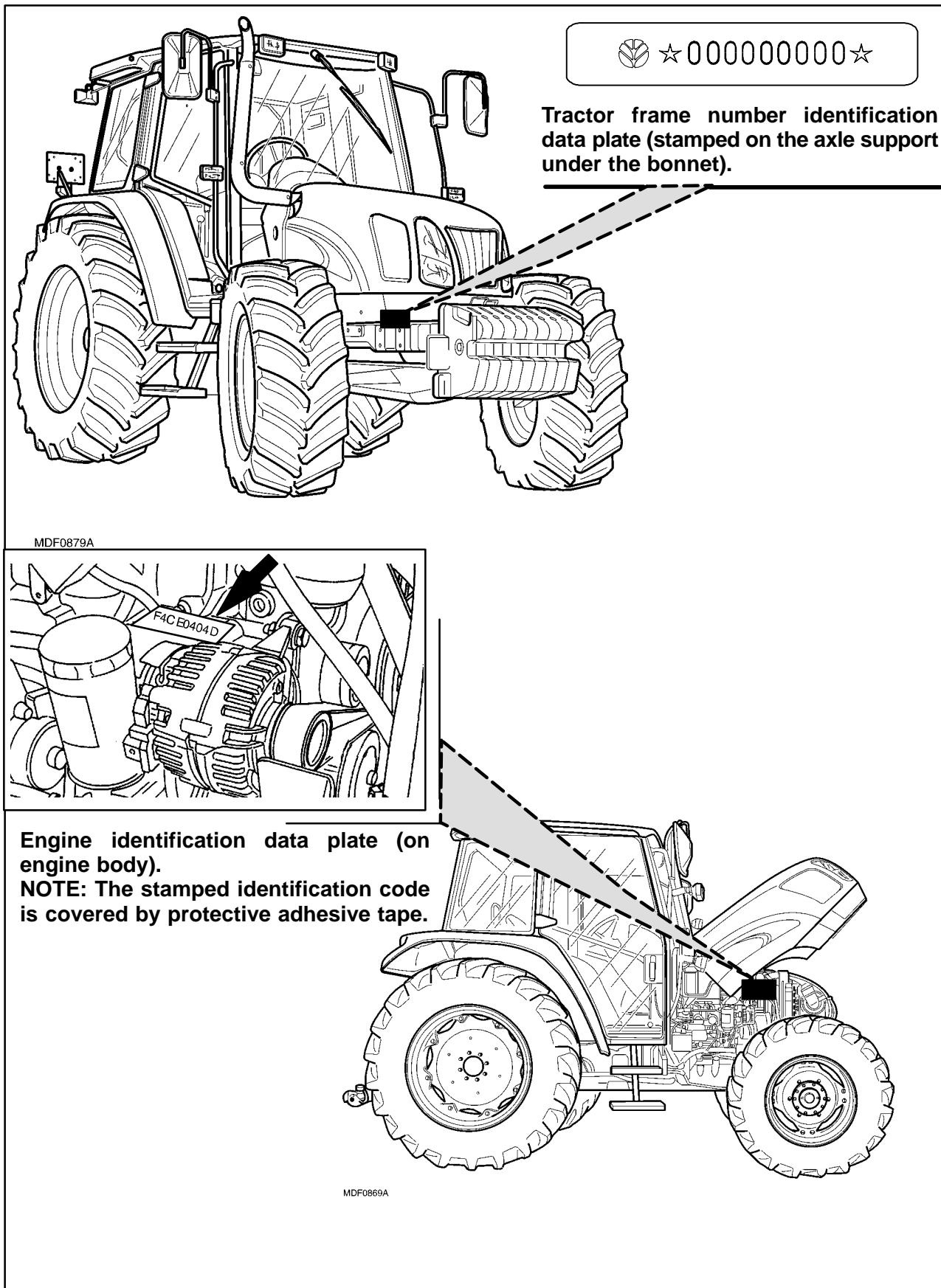
MDF0867A

**Frame and engine type identification data plate (inside the cab).**

CNH INTERNATIONAL SA – MADE IN ITALY	
TIPO	
OMLOGAZIONE	
TELAIO	
MASSA TOTALE AMMISSIBILE (kg)	
CARICO AMMISSIBILE SULL'ASSE ANTERIORE (kg)	DA: A:
CARICO AMMISSIBILE SULL'ASSALE POSTERIORE (kg)	DA: A:
CARICO RIMORCHIABILE AMMISSIBILE	
MASSA RIMORCHIABILE NON FRENATA (kg)	
MASSA RIMORCHIABILE CON FRENATURA INDIPENDENTE (kg)	
MASSA RIMORCHIABILE CON FRENATURA AD INERZIA (kg)	
MASSA RIMORCHIABILE CON FRENATURA ASSISTITA (kg)	

**Cab identification data plate.**





## IMPORTANT ECOLOGICAL CONSIDERATIONS

Soil, air and water are essential elements for agriculture and for life in general. If local legislation does not control the treatment of certain substances, the production of which is necessitated by advanced technologies, products derived from chemical and petrochemical products must be used and disposed of according to the rules of common sense.

The following recommendations may be of help:

- Find out what the relevant legislation in your country stipulates.
- Ask your suppliers of lubricants, oils, fuels, anti-freeze, detergents, etc. for information on the effects of these products on humans and the environment and for instructions concerning their use, storage and disposal. In many cases, local agricultural consultants will be able to provide assistance.

### SUGGESTIONS

1. Avoid using unsuitable, pressurised filling systems or fuel cans when filling tanks, as these may cause considerable spillage and leakage of liquids.
2. As a general rule, do not allow liquid fuels, lubricants, acids, solvents, etc., to come into contact with the skin. The majority of these products contain substances that are potential health hazards.
3. Modern lubricants contain additives. Do not burn contaminated fuel oils and/or oils used in conventional heating systems.
4. Avoid spillage when transferring used engine cooling liquids, engine and transmission lubricants, hydraulic oils, brake fluids, etc. Never mix used brake oil with fuel oil, or fuel oil with lubricants. Store safely until suitable disposal can be arranged according to national legislation or local regulations.
5. Modern anti-freeze liquids and solutions, e.g. anti-freeze and other additives, must be replaced every two years. They must not be left to be absorbed into the ground, but must be collected and disposed of in a suitable manner.
6. Do not open the air conditioning systems to carry out work. These systems contain gas that must not be released into the atmosphere. Contact your dealer or specialised personnel, who are equipped with the appropriate equipment and are authorised to re-fill the system.
7. Any leakage or defect in the engine cooling or hydraulic systems must be repaired immediately.
8. Do not increase the pressure in pressurised systems, as this may cause component parts to burst.
9. When welding, make sure that hoses are properly protected as sparks or molten material may puncture or weaken the tubes and sleeves, resulting in leakage of oil, cooling liquid, etc.
10. Do not adjust the setting of the fuel delivery system as this will alter the emission of exhaust fumes.

**NOTE: THE ENGINES INSTALLED ON THE TRACTORS COMPLY WITH ANTI-POLLUTION LEGISLATION.**

Thank you so much for reading.  
Please click the “Buy Now!”  
button below to download the  
complete manual.



After you pay.

You can download the most  
perfect and complete manual in  
the world immediately.

Our support email:

[ebooklibonline@outlook.com](mailto:ebooklibonline@outlook.com)