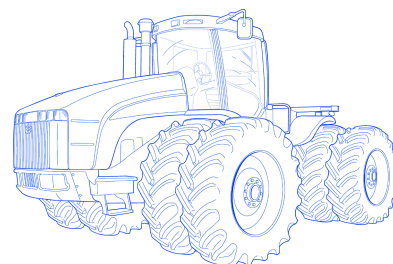


NEW HOLLAND
T9020
T9030
T9040
T9050
T9060

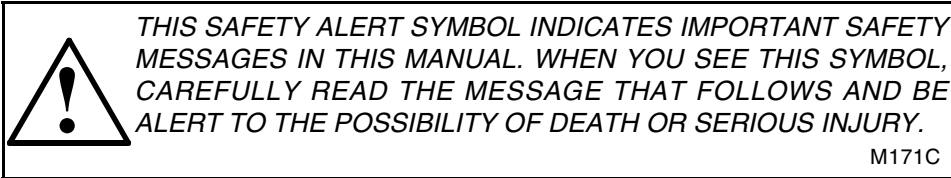
87562886
1st Printing

July, 2007

OPERATOR'S MANUAL






NEW HOLLAND



If Safety Decals on this machine use the words **Danger, Warning or Caution**, which are defined as follows:

- **DANGER:** Indicates an immediate hazardous situation that, if not avoided, will result in death or serious injury. The color associated with Danger is RED.
- **WARNING:** Indicates a potentially hazardous situation that, if not avoided, could result in death or serious injury. The color associated with Warning is ORANGE.
- **CAUTION:** Indicates an potentially hazardous situation that, if not avoided, may result in minor or moderate injury. It may also be used to alert against unsafe practices. The color associated with Caution is YELLOW.

If Safety Decals on this machine are ISO two panel pictorial, decals are defined as follows:

- The first panel indicates the nature of the hazard.
- The second panel indicates the appropriate avoidance of the hazard.
- Background color is YELLOW.
- Prohibition symbols such as   and  if used, are RED.



WARNING

IMPROPER OPERATION OF THIS MACHINE CAN CAUSE DEATH OR SERIOUS INJURY. BEFORE USING THIS MACHINE, MAKE CERTAIN THAT EVERY OPERATOR:

- Is instructed in safe and proper use of the machine.
- Reads and understands the Manual(s) pertaining to the machine.
- Reads and understands ALL Safety Decals on the machine.
- Clears the area of other persons.
- Learns and practices safe use of machine controls in a safe, clear area before operating this machine on a job site.

It is your responsibility to observe pertinent laws and regulations and follow CNH America LLC instructions on machine operation and maintenance.

CNH America LLC Technical Manuals

Manuals are available from your Dealer for the operation, service and repair of your machine. For prompt convenient service, contact your Dealer for assistance in obtaining the manuals for your machine.

Always give the Machine Name, Model and Serial Number of your machine so your Dealer can provide the correct manuals for your machine.

CALIFORNIA

Proposition 65 Warning

Diesel engine exhaust and some of its constituents are known to the State of California to cause cancer, birth defects, and other reproductive harm.

Battery posts, terminals and related accessories contain lead and lead compounds. Wash hands after handling.

CNH America LLC is continually striving to improve its products. We reserve the right to make improvements or changes when it becomes practical and possible to do so, without incurring any obligation to make changes or additions to the equipment sold previously.

GENERAL TABLE OF CONTENTS

1-TO THE OWNER	1
GENERAL INFORMATION	1
TRACTOR ORIENTATION	2
PRODUCT IDENTIFICATION AND SERIAL NUMBERS	4
CHEMICAL TANK MOUNTING	9
BUSINESS BAND RADIO READY (IF EQUIPPED)	10
2-SAFETY/DECALS	12
SAFETY	12
PERSONAL SAFETY	15
INSTRUCTIONAL SEAT SAFETY	15
MAINTENANCE SAFETY	16
FIRE SAFETY	16
BATTERY SAFETY	17
MACHINE OPERATION AND ROLL-OVER SAFETY	17
HAZARDOUS CHEMICALS	18
SAFETY DECALS	19
ARTICULATION CYLINDER LOCKING BLOCKS	24
MOUNTING AND DISMOUNTING THE TRACTOR	24
ROLLOVER PROTECTIVE STRUCTURE	25
CLEANING CAB WINDOWS	26
RH SERVICE WINDOW	26
INTERIOR REAR VIEW MIRROR	26
SEAT BELTS	27
TRACTOR WARNING LAMPS AND SMV SYMBOL	29
IMPLEMENT WARNING LAMPS AND SMV SYMBOL	30
SAFETY CHAIN	31
3-OPERATING CONTROLS	32
TRACTOR ACCESS	32
OPERATOR'S SEAT WITH AIR SUSPENSION	34
INSTRUCTIONAL SEAT (IF EQUIPPED)	36
STEERING COLUMN CONTROLS	37
FOOT PEDALS	38
CENTER CONSOLE CONTROLS	39
24-SPEED TRANSMISSION CONTROLS (IF EQUIPPED)	40
RIGHT HAND ARMREST CONSOLE CONTROLS	41
RH ARMREST CONTROL CONSOLE	42
ARMREST CONSOLE CONTROLS	49
6TH-7TH/MEGAFLOW ELECTRIC REMOTE VALVES (IF EQUIPPED)	51
AUTO GUIDANCE ROADING SWITCH (IF EQUIPPED)	51
UPPER CONSOLE CONTROLS	52
MP3 PLAYER JACK (IF EQUIPPED)	55
HVAC CONTROL SYSTEM	56
AUTOMATIC TEMPERATURE CONTROL OPERATION	59
POWER MIRROR CONTROL (IF EQUIPPED)	60
4-INSTRUMENTATION	64
ROPS POST INSTRUMENT CLUSTER OVERVIEW	64
PROGRAMMING THE DISPLAY MONITOR	70
OLD HOURS	77
PROGRAM ADJUST MENU	78
WARNING FAULT DISPLAYS	82
INSTRUMENTATION CLUSTER OPERATION	89

5-OPERATING INSTRUCTIONS	101
BEFORE STARTING THE ENGINE	101
SEAT BELTS	102
STEERING COLUMN ADJUSTMENT	103
STARTING THE ENGINE	104
COLD WEATHER STARTING	106
STARTING FLUID CONTAINER REPLACEMENT (T9060 ONLY, IF EQUIPPED)	108
STOPPING THE ENGINE	109
COLD TEMPERATURE OPERATION	110
TOWING THE TRACTOR	113
TRANSPORTING THE TRACTOR	115
POWERSHIFT TRANSMISSION OPERATION (IF EQUIPPED)	116
24-SPEED TRANSMISSION OPERATION (IF EQUIPPED)	130
DIFFERENTIAL LOCK (IF EQUIPPED)	133
CONSTANT ENGINE SPEED OPERATION (IF EQUIPPED)	134
6-FIELD OPERATION	135
POWER TAKEOFF (IF EQUIPPED)	135
OPERATING THE POWER TAKEOFF (PTO)	138
STANDARD DRAWBAR	140
THREE POINT HITCH PREPARATION	144
HITCH COUPLER - CATEGORY III OR IV-N	149
HITCH OPERATION	153
RAISING AND LOWERING THE HITCH	154
REMOTE HYDRAULICS	166
AUXILIARY IMPLEMENT POWER CONNECTIONS	179
7-IN-FIELD PERFORMANCE	183
TRACTOR BALLAST	183
FRONT AND REAR SUITCASE WEIGHTS	189
WHEEL WEIGHTS	192
WHEEL WEIGHT BOLT TORQUE	192
TIRE AND RIM SERVICE	193
TIRE PRESSURE FOR MAXIMUM TIRE LOAD AT RATED INFLATION	196
WHEEL BOLT TORQUES	199
SCRAPER OPERATING PROCEDURES	211
8-LUBRICATION/FILTERS/FLUID/MAINTENANCE	212
LUBRICATION AND MAINTENANCE	212
LUBRICANTS AND CAPACITIES	212
ENGINE LUBRICATION	213
LUBRICATION AND MAINTENANCE CHART	215
GRILLE AND HOOD ACCESS	219
AIR INDUCTION SYSTEM	247
PRESSURE COOLING SYSTEM	280
SCA SERVICE REQUIREMENTS (T9020 AND T9060 ONLY)	280
9-ELECTRICAL SYSTEM	282
SPECIFICATIONS	282
FUSES	282
GENERAL SERVICE INFORMATION	288
10-SPECIFICATIONS	289
GENERAL SPECIFICATIONS	289
TRACTOR WEIGHTS	292
APPROXIMATE TRAVEL SPEEDS (MPH)	293

APPROXIMATE OVERALL MEASUREMENTS	300
11-DETAIL INDEX	301

GENERAL INFORMATION

Introduction to this Manual

This manual contains important information about the safe operation, adjustment and routine maintenance of your T9000 Series Tractor. The manual is divided into ten sections as outlined in the General Table of Contents Page(s). Refer to the Detail Index at the end of this manual for locating specific items about your tractor.

Use this manual as a guide. Your tractor will remain a reliable working machine as long as it is kept in good working condition and serviced properly.

Read this manual before you start the engine or operate this tractor. If any information in this manual is not understood, or if you need more information or assistance, contact your dealer.

All persons training to operate, or who will be operating this tractor, should be old enough to possess a valid local vehicle operating permit (or other applicable local age requirement) and must have demonstrated the ability to operate and service the tractor correctly and safely.

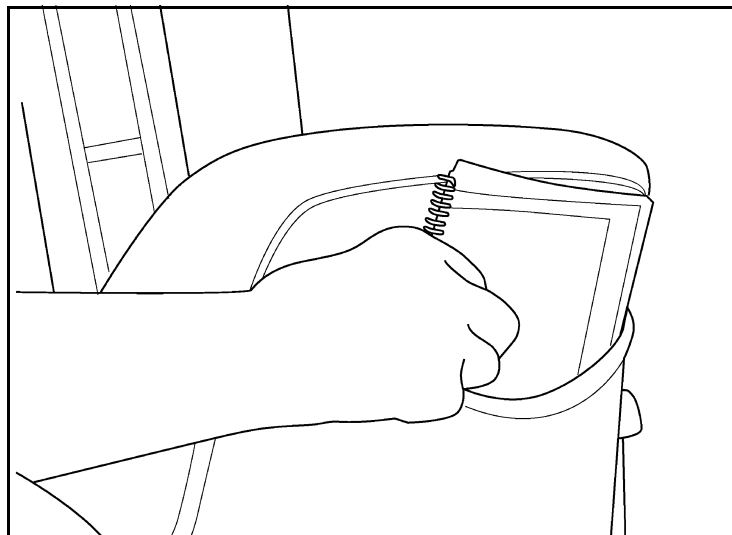
If your tractor requires replacement parts, do not use unauthorized parts or substitute materials. Case dealers stock Case IH approved service parts and have technicians with special training that know the best methods of repair and maintenance for your tractor.

Statement of Tractor Intended Use

The T9000 Series Tractor, with standard equipment and authorized attachments, is intended to be used for customary farming, land leveling and related agriculture operations.

Installation of utility (dozer) blades, tile plows, front loaders or push bars on the tractor is not recommended. Any tractor damage resulting from the installation and/or use of such equipment is not covered by the tractor warranty.

Operator Manual Storage Compartment



MK99H025

DO NOT permit anyone to operate or service this tractor until you or other operators have read this manual. The Operator's Manual is a part of your tractor and must be available to all operators.

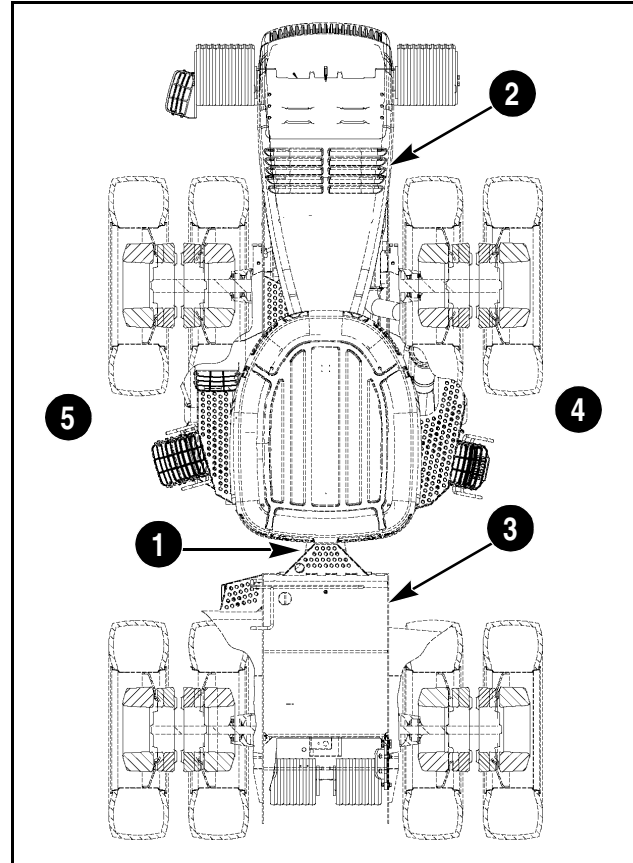
Make sure the manual is complete and in good condition. Store the Operator's Manual and other important tractor information in the storage compartment provided on the rear side of the seat backrest.

TRACTOR ORIENTATION

The T9000 Series Tractor is classified as a four-wheel drive articulating vehicle. The standard tractor consists of front and rear frame assemblies that steer by pivoting at the center articulation joint (1).

The standard tractor front frame (2) incorporates the engine, front axle, transmission and cab. The rear frame (3) incorporates the rear axle and fuel tank.

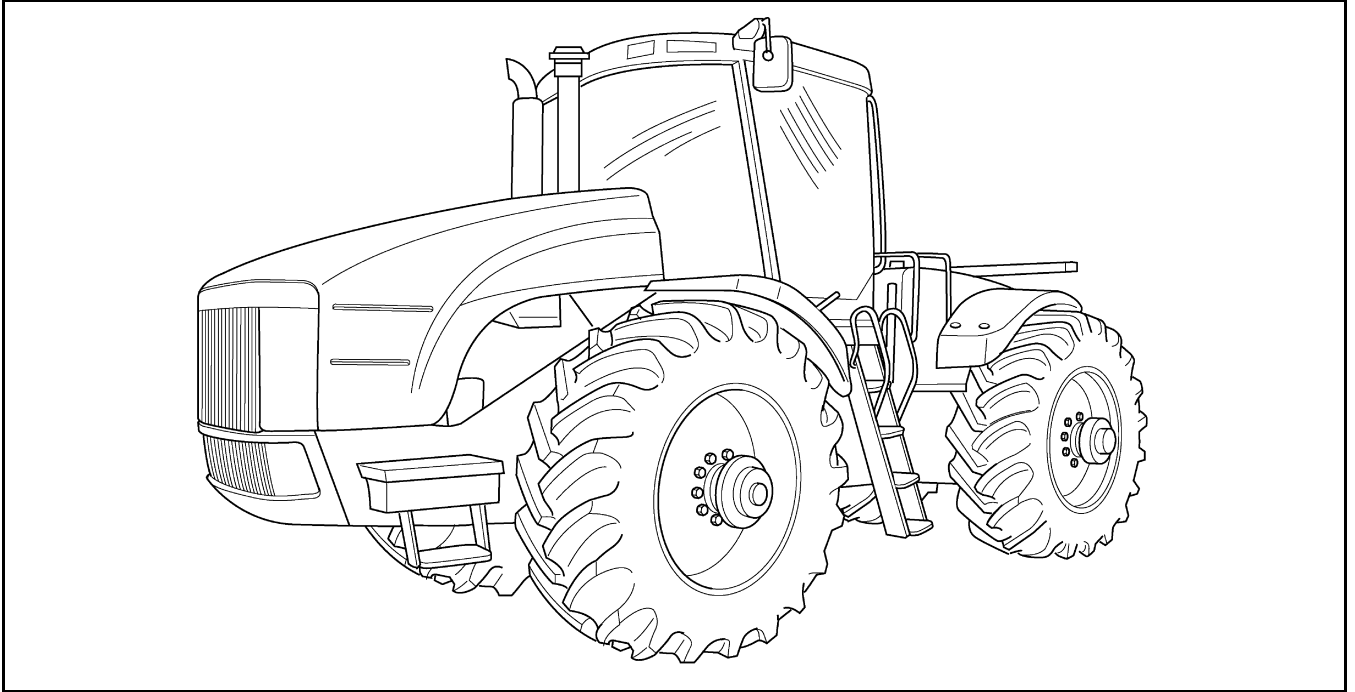
The right hand (RH) (4) and left hand (LH) (5) side of the tractor as used in this manual are the same as your right hand and left hand when sitting in the operator's seat looking forward over the engine.



MA00A013

- | | |
|---------------------------------|--------------------|
| 1. CENTER ARTICULATION JOINT | 4. RIGHT-HAND SIDE |
| 2. STANDARD TRACTOR FRONT FRAME | 5. LEFT-HAND SIDE |
| 3. REAR FRAME | |

T9000 SERIES NEW HOLLAND TRACTORS



MK01G135

PRODUCT IDENTIFICATION AND SERIAL NUMBERS

Write your machine Model Number, Product Identification Number (P.I.N.) and Serial Numbers of major components on the lines provided.

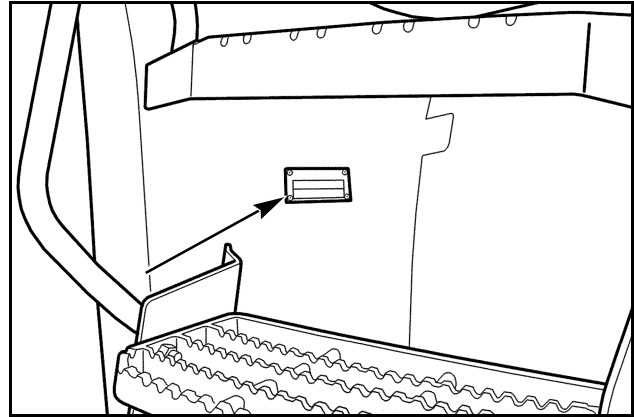
If needed, give these numbers to your dealer when you need parts or information for your machine.

Tractor Model and Product Identification Numbers

Model: _____

P.I.N. * Z: _____

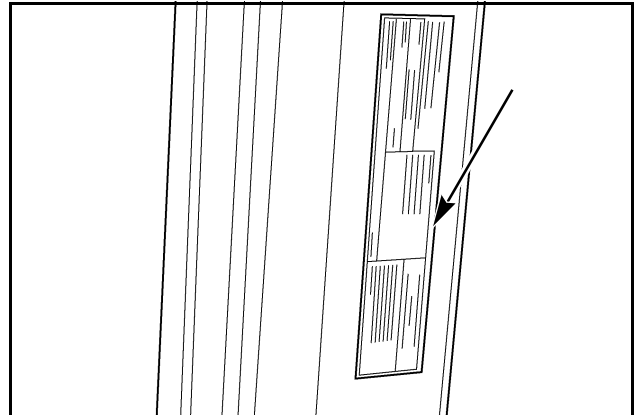
Located on the upper back side of the LH front fender.



MT04M004

Rollover Protective Structure (ROPS) Serial Number

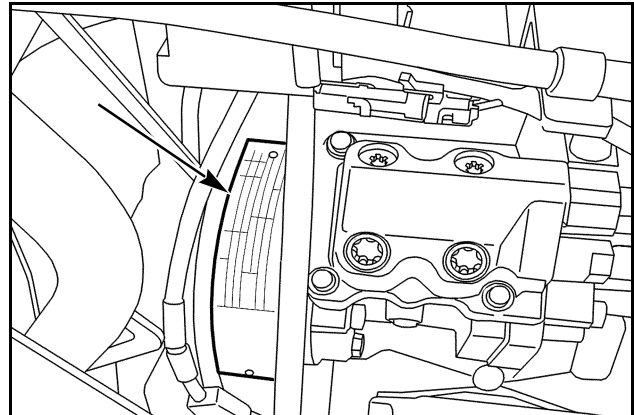
Located under the cover of the LH front ROPS post.



MK01G271

Engine Serial Number (T9020)

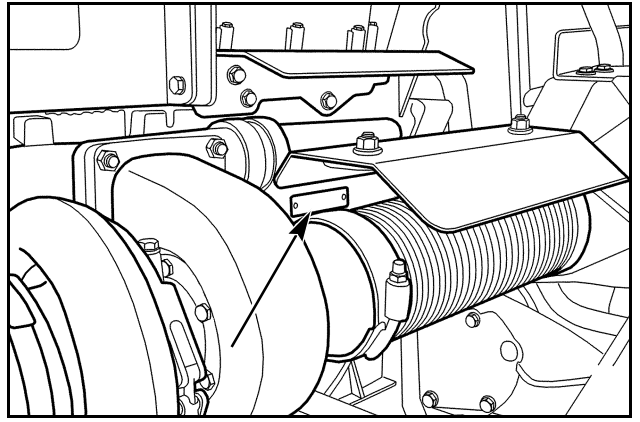
Located on the top LH side of the engine fuel pump drive cover.



MT07F140

Engine Serial Number (T9030-T9040)

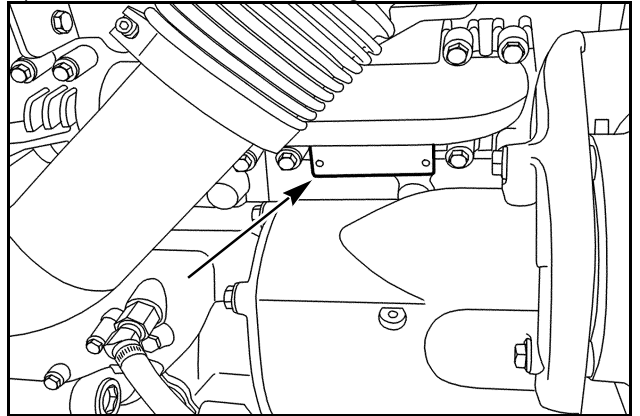
Located on the LH upper side under the heat shield.



MT05M015

Engine Serial Number (T9050)

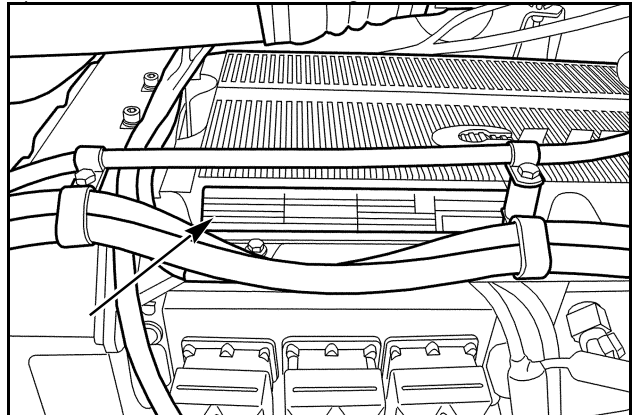
Located on the LH upper side behind compound turbo gear box.



MT07F083

Engine Serial Number (T9060)

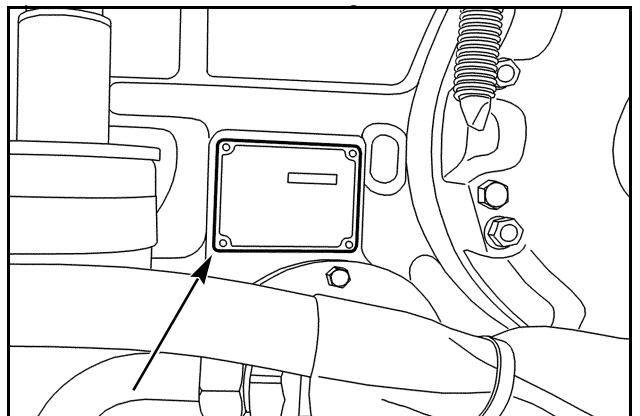
Located on the LH upper side under the heat shield.



MT05M016

Transmission Serial Number

Located on the LH rear side of the transmission.



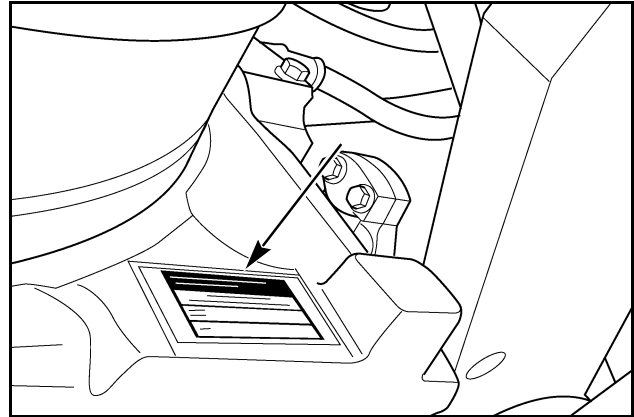
MT07F084

Axle Serial Number (T9020)

Front _____

Rear _____

Located on the side of the axle center housing.



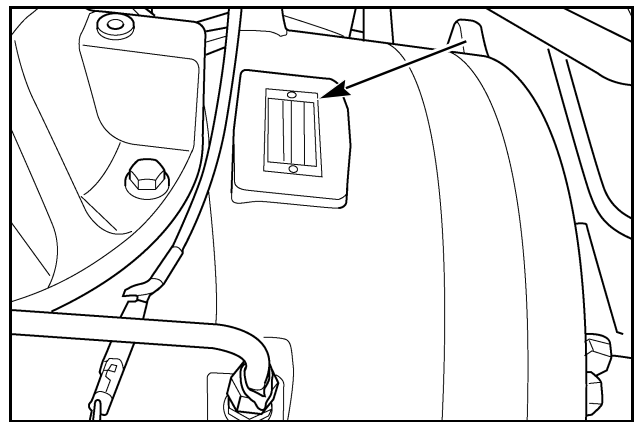
MK99K097

Axle Serial Number (T9030, T9040, T9050, T9060)

Front _____

Rear _____

Located on the final drive housing.



MK01G070

Thank you so much for reading.
Please click the “Buy Now!”
button below to download the
complete manual.



After you pay.

You can download the most
perfect and complete manual in
the world immediately.

Our support email:

ebooklibonline@outlook.com