

# NEW HOLLAND OPERATOR'S MANUAL

**47 CO 47" Rotary Broom # 715650006**

**Serial # R06XA001 and up**

**For TZ Tractors (TZ18DA, TZ24DA)**



87585655 08/06  
(OM 0320BR-A)

---

# TABLE OF CONTENT

---

INTRODUCTION – TO THE PURCHASER .....	3
SAFETY PRECAUTIONS .....	4
Before Operation.....	4
Notice.....	5
Subframe & Rotary Broom .....	5
Before Operation .....	5
Rotary Broom & Subframe Operation .....	6
The Tractor .....	7
General Information.....	7
Operating the Tractor.....	7
During Operation .....	8
Roll-Over Protective Structure "ROPS" (If Equipped).....	8
Additional Safety Equipment.....	8
Maintenance .....	9
Transporting.....	10
DECALS .....	11
ASSEMBLY .....	12
Rotary Broom Assembly .....	12
Parking Stand .....	12
Limit Stops Installation.....	12
Attaching Rotary Broom to Tractor.....	13
Removing Rotary Broom from Tractor .....	13
OPERATION.....	14
General Preparation.....	14
Broom Angle Adjustment .....	14
Brush-to-Ground Contact Adjustment .....	14

---

# TABLE OF CONTENT

---

Operation .....	15
General Sweeping .....	15
Lawn Dethatching & Leaf Raking .....	15
Raising and Lowering the Broom .....	15
Starting & Stopping the Rotary Broom .....	16
Snow Removal .....	15
Maintenance .....	15
Hardware .....	15
Lubrication .....	16
Brush Replacement .....	17
Chain Replacement .....	18
Shearbolt Replacement .....	18
Storage .....	18
PARTS.....	19
Introduction.....	19
Rotary Broom Assembly .....	20
Gearbox .....	23
Female Driveline .....	24
AVAILABLE OPTIONS .....	25
AVAILABLE EQUIPMENT .....	26
TORQUE SPECIFICATION TABLE .....	27

---

# INTRODUCTION

---

## TO THE PURCHASER

All products are designed to give safe, dependable service if they are operated and maintained according to instructions. **Read and understand this manual before operation.**

This manual has been prepared to assist the owner and operators in the safe operation and suitable maintenance of the rotary broom. The information is applicable to products at the time of manufacture and does not include modifications made afterwards.

Read and understand this operator's manual before attempting to put equipment into service. Familiarize yourself with the operating instructions and all the safety recommendations contained in this manual and those labeled on the equipment and on the tractor. Follow the safety recommendations and make sure that those with whom you work follow them.

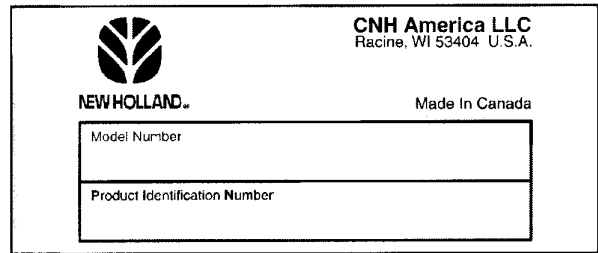
### Illustrations

The illustrations may not necessarily reproduce the full detail and the exact shape of the parts or depict the actual models, but are intended for reference only.

### Direction Reference

All references to right and left, forward or rearward, are from the operator's seat, facing the steering wheel.

### Serial Plate



*To assist your dealer in handling your needs, please record hereafter the model number and serial number of your rotary broom and tractor. It is also advisable to supply them to your insurance company. It will be helpful in the event that rotary broom or tractor is lost or stolen.*

## TRACTOR

## ROTARY BROOM

MODEL:

---

SERIAL NUMBER:

---

DATE OF PURCHASE:

---

DEALER NAME:

---

---

# SAFETY PRECAUTIONS

---



## SAFETY FIRST

This symbol, the industry's "Safety Alert Symbol", is used throughout this manual and on labels on the machine itself to warn of the possibility of personal injury. Read these instructions carefully. It is essential that you read the instructions and safety regulations before you attempt to assemble or use this rotary broom.



**DANGER :** Indicates an immediate hazardous situation which, if not avoided, will result in death or serious injury.



**WARNING :** Indicates a potentially hazardous situation which, if not avoided, could result in death or serious injury.



**CAUTION :** Indicates a potentially hazardous situation which, if not avoided, may result in minor or moderate injury.

**IMPORTANT :** Indicates that rotary broom or property damage could result if instructions are not followed.

**NOTE :** Gives helpful information.

All products are designed to give safe, dependable service if they are operated and maintained according to instructions. **Read and understand this manual before operation.** It is the owner's responsibility to be certain anyone operating this product reads this manual, and all other applicable manuals, to become familiar with this rotary broom and all safety precautions. Failure to do so could result in serious personal injury or rotary broom damage. If you have any questions, consult your dealer.

## **BEFORE OPERATION**

### **Children**

Tragic accidents can occur if the operator is not alert to the presence of children. Children are generally attracted to machines and the work being done. Never assume children will remain where you last saw them.

1. Keep children out of the operating area and under the watchful eye of another responsible adult.
2. Be alert and turn machine off if children enter the work area.
3. Before and when backing, look behind for small children.
4. Never carry children while operating the machine. They may fall off and be seriously injured or interfere with the safe operation of the machine.
5. Never allow children to play on the machine or rotary broom even when they are turned off.
6. Never allow children to operate the machine even under adult supervision.
7. Use extra care when approaching blind corners, shrubs, trees, or other obstructions that might hide children from sight.

---

# SAFETY PRECAUTIONS - continued

---

## **NOTICE**

A safe operator is the best assurance against accidents. All operators, no matter how experienced they may be, should read this operator's manual and all other related manuals before attempting to operate the rotary broom. Please read the following section and pay particular attention to all safety recommendations contained in this manual and those labeled on the rotary broom and on the tractor.

## **SUBFRAME & ROTARY BROOM**

### **Before Operation**

1. Read and understand this operator's manual and tractor operator's manual. Know how to operate all controls and how to stop the unit and disengage the controls quickly.
2. Never wear loose, torn, or bulky clothing around the tractor, the subframe and the rotary broom. It may catch on moving parts or controls, causing injury.
3. Before and during seasons, thoroughly inspect the area where the rotary broom is to be used and remove all objects that may be thrown or cause damage to the rotary broom.
4. Set transmission to neutral and disengage clutch, if equipped, before starting the engine.
5. Do not operate rotary broom in wintertime without wearing adequate winter garments. Always wear protective clothing.
6. Never attempt to make any adjustments while engine is running. Read this manual carefully to acquaint yourself with the rotary broom as well as the tractor operator's manual. Working with unfamiliar rotary broom can lead to accidents. Be thoroughly familiar with the controls and proper use of the rotary broom.
7. Keep all safety guards in place and verify hardware for proper tightening.
8. Check for moving parts excessive wear regularly. Replace worn parts with genuine parts.
9. Replace all missing, illegible, or damaged safety and warning decals. See list of decals in operator's manual.
10. Do not modify or alter this rotary broom or any of its components, or any rotary broom function without first consulting your dealer.
11. Keep safety decals clean of dirt and grime.
12. Make sure the tractor is counterweighted as recommended by your dealer. Weights provide the necessary balance to improve stability, traction and steering.

Thank you so much for reading.  
Please click the “Buy Now!”  
button below to download the  
complete manual.



After you pay.

You can download the most  
perfect and complete manual in  
the world immediately.

Our support email:

[ebooklibonline@outlook.com](mailto:ebooklibonline@outlook.com)