

1896 Tractor
Operators Manual

9-11111

CASE *III*





This symbol means ATTENTION! BECOME ALERT! YOUR SAFETY IS INVOLVED. The message that follows the symbol contains important information about your safety. Carefully read the message. Make sure you fully understand the causes of possible injury or death.

SB001

IF THIS MACHINE IS USED BY AN EMPLOYEE, IS LOANED, OR IS RENTED, MAKE SURE THAT THE OPERATOR UNDERSTANDS THE TWO INSTRUCTIONS BELOW.

BEFORE THE OPERATOR STARTS THE ENGINE:

1. GIVE INSTRUCTIONS TO THE OPERATOR ON SAFE AND CORRECT USE OF THE MACHINE.
2. MAKE SURE THE OPERATOR READS AND UNDERSTANDS THE OPERATOR'S MANUAL FOR THIS MACHINE.



IMPROPER OPERATION OF THIS MACHINE CAN CAUSE INJURY OR DEATH.

BEFORE STARTING THE ENGINE, DO THE FOLLOWING:

1. READ THE OPERATOR'S MANUAL.
2. READ ALL SAFETY DECALS ON THE MACHINE.
3. CLEAR THE AREA OF OTHER PERSONS.

LEARN AND PRACTICE SAFE USE OF MACHINE CONTROLS IN A SAFE, CLEAR AREA BEFORE YOU OPERATE THIS MACHINE ON A JOB SITE.

It is your responsibility to observe pertinent laws and regulations and to follow manufacturer's instructions on machine operation and maintenance.

See your Authorized Case dealer for additional operator's manuals, parts catalogs, and service manuals.

TO THE OWNER OF A CASE TRACTOR

Use this manual as your guide. If you follow the instructions given in this manual, your Case Tractor will work well for many years.

Your Authorized Case Dealer can give you assistance with J I Case Company made parts and persons with special training that know the best methods of repair and maintenance for your tractor.

Call your Authorized Case Dealer if you need any assistance or information.

Your Authorized Case Dealer



Figure 1

NOTE: *When you are in the tractor seat looking forward, the right hand and left hand of the tractor are the same as your right hand and left hand.*

SERIAL NUMBERS

When parts or assistance is needed, or when writing to your Authorized Case Dealer, always give this information:

1. Tractor Model Number
2. Product Identification Number
3. Engine Serial Number
4. Transmission Serial Number
5. Cab Serial Number

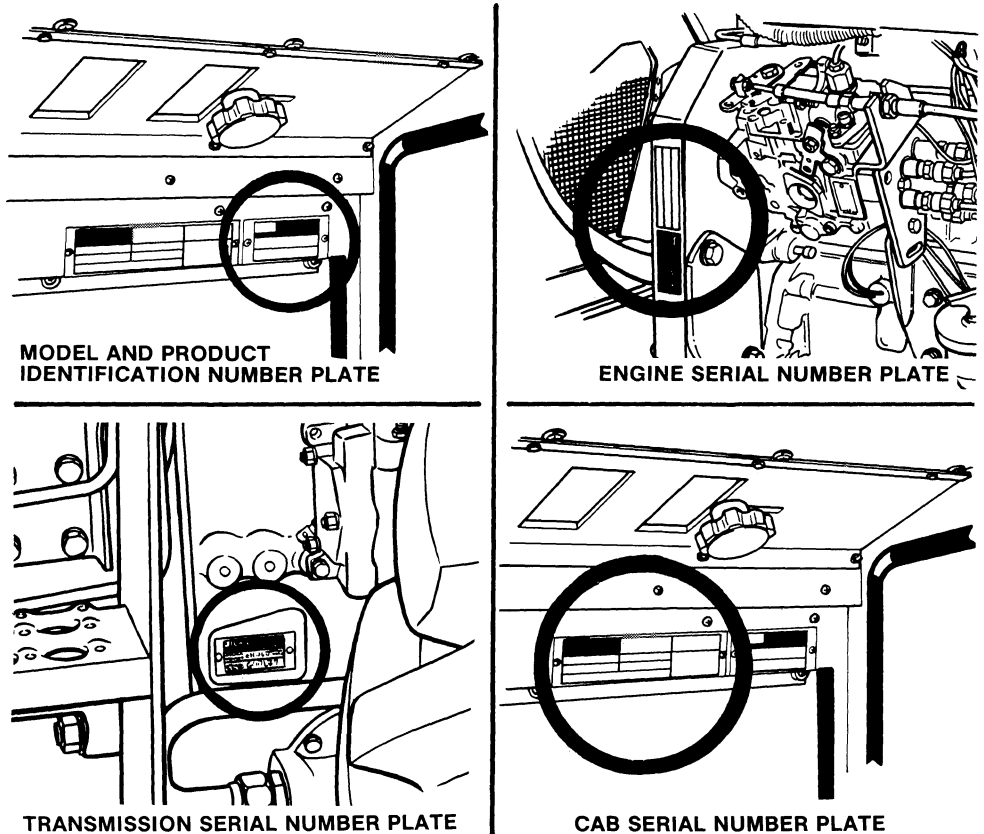


Figure 2

Write the serial numbers of your tractor on the lines below.

MODEL NUMBER _____

PRODUCT IDENTIFICATION NUMBER _____

ENGINE SERIAL NUMBER _____

TRANSMISSION SERIAL NUMBER _____

CAB SERIAL NUMBER _____

TABLE OF CONTENTS

TO THE OWNER	I	DIGITAL INSTRUMENT CLUSTER (Cont'd)	
SERIAL NUMBERS	II	Timer Function	48
SAFETY	V-XXVI	Wheel Slip Function	49,50
Safety Rules	V	Ground Speed Function	50
Before Starting	V-VI	Area/Hour Function	51
Operation	VII-XVI	Area Done Function	51
Service	XVII-XIX	Programming Buttons	52
HAND SIGNALS	XX-XXI	Programming Tire Size	52-57
DECALS	XXII-XXVI	Dynamic Tire Code Number	53,54
DIESEL ENGINE SPECIFICATIONS	1,2	Static Tire Code Number	55-57
GENERAL SPECIFICATIONS	3-6	Programming Attachment Width	58,59
TRAVEL SPEEDS	7	Instrument Cluster Functional Checks ..	60
FUEL SPECIFICATIONS	8	Automatic Shutdown System	61,62
APPROXIMATE OVER ALL		True Ground Speed Sensor	63
MEASUREMENTS	9,10	Operating Controls	64-95
APPROXIMATE TRANSPORT		Steering Console	64,65
WEIGHT	9,10	Foot Pedals	66,67
MAXIMUM GROSS VEHICLE WEIGHT .	9,10	Operators Console	68-73
TIRE AND WHEEL SPECIFICATIONS .	11-13	Mechanical Front Drive	74
Tire Inflation Pressure	12,13	Park Brake Control	75
Tire Load Capacity	13	Steering Column Tilt	76
FRONT WHEEL TREAD POSITIONS	14	Telescopic Steering Column	76
FRONT WHEEL		Heater Stop Valve	77
TREAD POSITIONS - MFD	15	Fuel Tank Water Trap	77
WHEEL MOUNTING TORQUES	16	Rear View Mirrors	78
INSTALLATION OF		Cab Window Lever	78
STEERING STOPS - MFD	16,17	Cab Headliner Controls	79,80
TIRE SIZE ARRANGEMENTS - MFD	18	Cab Air Flow Control	81
REAR WHEEL TREAD POSITIONS	19	Cab Defroster Control	81
DUAL REAR WHEEL		Cab Air Flow Arrangements	82-84
TREAD POSITIONS	20,21	Air Conditioner Operation	85
LUBRICATION	22-36	Cab Door Lock	85
Engine Hourmeter	22	Operators Seat	86-89
Engine Lubrication	23	Seat Belts	90,91
Lubrication Chart	24,25	Amber Warning Lamps, Direction	
Engine Lubrication	26,27	Turn Signals & SMV Symbol	92,93
Engine Oil Filter	28	Implement Warning Lamps	
Transmission Lubrication	29	& SMV Symbol	94
Trans/Hydraulic Oil Filters	30-32	Auxiliary Outlet Socket	95
Differential Lubrication	33	OPERATING INSTRUCTIONS	96-155
Planetary Lubrication	34	Run-In Procedure	96,97
Steering & Brake System Air Removal ..	35	Before Starting the Engine	98
Front Wheel Bearings	36	Towing	99
ALTERNATOR CHARGING SYSTEMS ...	37	How to Transport the Tractor	99
DIGITAL INSTRUMENT CLUSTER ...	38-59	Starting Procedure	100,101
English/Metric Mode Selection	39	Stopping the Engine	102
Engine Hourmeter	39	Cold Temperature Operation	103,104
Turn Signal Indicator	39	Cold Temperature Starting	105-109
Service Monitors and Bar Indicators .	40-46	Ether Starting Fluid	105,106
Function and Programming Buttons .	47-52	Starting Fluid	
Engine RPM Function	47	Container Replacement	107
PTO RPM Function	47	Coolant Heater	108
		Oil Pan Heater	109
		Power Shift Transmission	110,111
		Differential Lock	112

TABLE OF CONTENTS

OPERATING INSTRUCTIONS (Cont'd)

Power Takeoff	113-117
Operating PTO	113
540 or 1000 RPM PTO Operation	114
Drawbar Position	115
Guards	116
Operating Safety	117
Drawbar	118
Three Point Hitch System	119
Hitch System Adjustments	120-123
Lift Links and Upper Link	120,121
Sway Blocks	122
Extendable Draft Arms	122
Anti-Sway Chain	122
Lowering Speed Regulator Valve	123
Draft Arm Mechanical Flotation	123
Hitch Operation	124-127
Connect Implement	124
Hitch Control Lever	124,125
Sensing Control	126,127
Stationary Depth	127
Hydraulic Float Control	127
Hitch Coupler - Category II	128
Hitch Coupler - Category II-III	129-131
Remote Hydraulic Control	132-136
Remote Control Levers	132,133
Variable Flow Control	134,135
Operating the Remote Circuits	136
Hydraulic Motors	136
Remote Valve with Load check (if Equipped)	136
Hydraulic Hose Couplers	137
Hydraulic Hose Coupling	138,139
Remote Cylinder	140
Hydraulic Cylinder Jack Pads	141
Front Axle Adjustment	142
Rear Wheel Hub Adjustment	143-145
Dual Wheel Mounting	145
Rear Tire Mounting	146
Tractor Ballast	148-152
Measuring Slip without True Ground Speed Sensor	148
Front End Weights	149
Rear Wheel Weights	150
Tire Liquid Weight	150,151
Tractor & Equipment Weight	152
Front Wheel Fenders	153-155
PREVENTIVE MAINTENANCE	156-216
Hood & Side Panels	157
Cooling System	158-168
Pressure Cooling System	158
Reservoir Coolant Level	159
Radiator Coolant Level	159
Cleaning the Cooling System	160
Filling the Cooling System	161
Coolant Solutions	162

PREVENTIVE MAINTENANCE (Cont'd)

Grille Screens & Radiator Area	163
Thermostat Check	164
Thermostat Replacement	164-167
Fan Belt Replacement	168
General Engine Inspection	169
Fuel System	169-173
Fuel Filter Replacement	170,171
Air Removal	172,173
Air Induction System	174-184
Air Filter Service Interval	174
Air Filter	175
Air Filter Service Monitor	176
Air Filter Service	177-180
Aspirated Strata Tube Service ..	181-183
Tubes & Hoses	184
Neutral Start Switch Adjustment ..	185,186
Electrical System	187-190
Head Lamps	187
Flood Lamps	187
Flashing Amber Warning Lamps	188
Tail Lamps	188
Instrument Cluster Lamps	189
Fuse Panel - Tractor & Cab	189
Head Lamp Adjustment	190
Batteries	191-194
Service Instructions	191
Batteries Not In Use	191
Access to Batteries	192
Battery Cables & Terminals	192
Removal & Installation of Batteries ..	193
Auxiliary Battery Connections	194
Park Brake Adjustment	195
Roll Over Protective Structure (ROPS)	196-200
Tractor Roll Over	199
Safety Rules	199
ROPS Label	199
Maintenance & Inspection	200
Operators Cab	201-214
Seat Belt Inspection & Maintenance	201
Preventive Maintenance	202,203
Air Filter Service	204-206
Operators Seat	207,208
Refrigerant Check	209,210
Compressor Belt Check & Adjustment	211
Compressor Belt Replacement	212
Dome Lamp	213
Console Lamp	214
Valve Tappet Adjustment	215,216
CASE TECHNICAL MANUALS	217

SAFETY

Safety Rules

Understand that your safety and the safety of other persons is measured by how you service, and operate this machine. Know the positions and operations of all controls before you try to operate. **MAKE SURE YOU CHECK ALL CONTROLS IN A SAFE AREA BEFORE STARTING YOUR WORK.**

READ THIS MANUAL COMPLETELY and make sure you understand the controls. All equipment has a limit. Make sure you understand the speed, brakes, steering, stability, and load characteristics of this machine before you start to operate.

The safety information given in this manual does not replace safety codes, insurance needs, federal, state and local laws. Make sure your machine has the correct equipment needed by the local laws and regulations.

J I Case is continuing to work for your safety: by making tractors with better protection and by giving these rules for safe operation.

Before Starting



CAUTION: *To help prevent personal injuries during tractor operation and maintenance, use safety shoes, a hard hat, safety glasses or goggles and good fitting clothing.*



CAUTION *Provide a first aid kit for use in case of accident.*



CAUTION *It is good practice to carry a fire extinguisher on the tractor. Be sure that the extinguisher is properly maintained and be familiar with its proper use.*

WARNING Before starting engine study Operator's Manual safety messages.

Read all safety signs on machine.

Clear the area of other persons.

Learn and practice safe use of controls before operating.

It is your responsibility to understand and follow manufacturer's instructions on machine operation, service, and to observe pertinent laws and regulations.

Operator and Service Manuals may be obtained from your equipment dealer.



CAUTION: Check the machine for leaks or any parts that are broken, not working correctly, or not there at all. Before you start the machine, tighten all caps, dipsticks, battery covers, etc.



WARNING: To help prevent injury before starting engine, put shields in place. Sit in the seat and place controls in neutral.

Before operating tractor clear people away, no riders and fasten seat belt. When operating tractor keep away from power driven parts, avoid steep slopes, embankments, ditches, rough terrain and reduce speed when turning.

In high speed travel couple brake pedals together where applicable. On road travel use flashing warning lights where permitted and keep SMV emblem visible from rear.

When stopped engage park lock or brake, lower implement to ground and stop engine before dismounting to service or clear machines.



WARNING Before starting the engine, be sure all operating controls are in neutral. This will ease starting loads on the starter and batteries and will eliminate the accidental start up of PTO driven equipment.



Operation



CAUTION: *With the engine running and the tractor in motion, if the ignition key switch is turned off and then back on, the tractor can move forward rapidly. The higher the throttle setting the more rapid the move forward will be. When the ignition key is turned off, electric solenoids close all valves to the hydraulic power shift clutches. When the key is turned back to on, oil will immediately flow to and close the clutches controlled by the power shift lever position and the tractor will move forward rapidly.*



CAUTION: *Do not turn off the switch to stop the tractor with the transmission in gear when the engine is running. Power shift clutch friction could cause tractor movement on a smooth, level surface. If the ignition key is turned off for any reason, the engine should also be shutoff using the engine stop control.*



WARNING: *Engine can start with transmission in gear when neutral safety switch is by-passed:*

- 1. Do not connect across terminals on starter.*
- 2. Attach booster batteries according to safe method in Operators Manual. Then use recommended starting procedure from operators seat.*
- 3. When necessary, repair electrical system components promptly so that "jump starting" will not be attempted.*

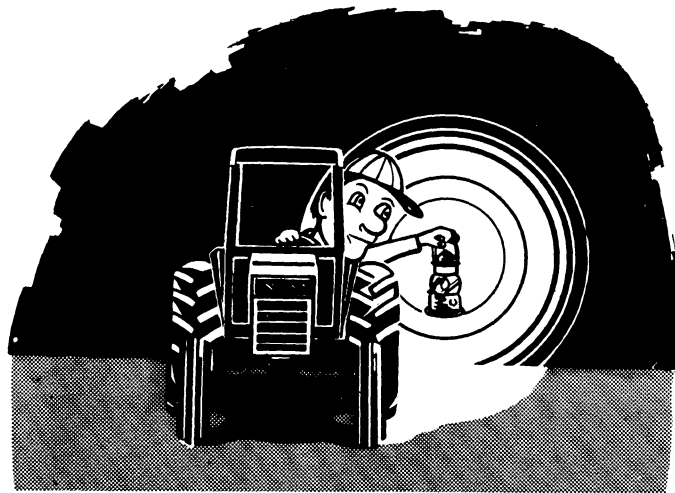
Machine run-away can cause injury or death to operator and bystanders.



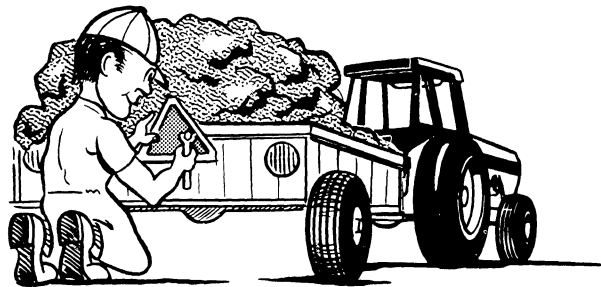
WARNING: Cab air filters remove dust in the air, but are not capable of removing chemicals used in spraying crops or in weed control. Many chemicals used for these purposes are toxic when improperly used, and can be hazardous to operators and others in the area. Follow the instructions of manufacturers of both the equipment and the chemicals regarding prohibitions against inhalation of dust or spray, personal hygiene practices, and other precautions noted by the manufacturers.



WARNING Tractor travel speed should be such that complete control and tractor stability is maintained at all times. Where possible, avoid operating the tractor near ditches, embankments and holes. Reduce speed when turning, crossing slopes, and on rough, slick, or muddy surfaces.

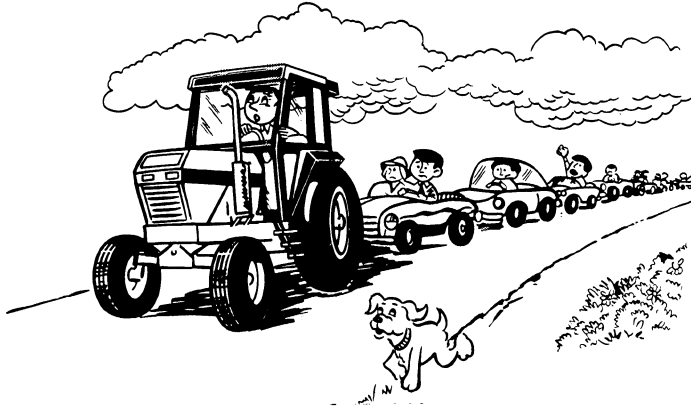


WARNING: Collision of high speed road traffic and tractors or implements can cause personal injury or death. On roads, use flasher/lights according to local laws. Keep SMV emblem visible.

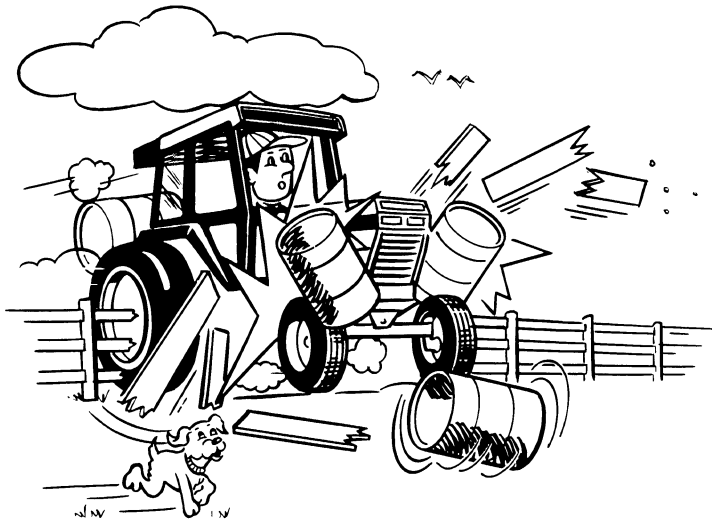




CAUTION Stop, look and listen before entering a highway, stay on your side of the road and pull over to let faster traffic pass. Slow down and signal as you turn off.



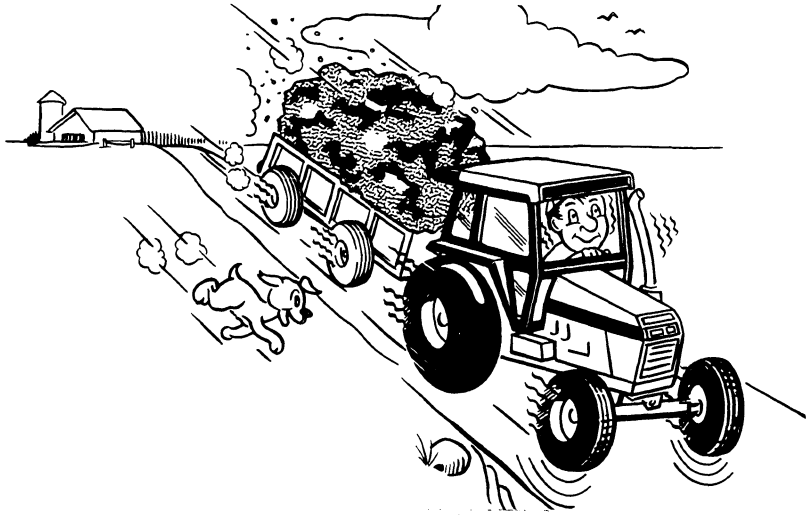
CAUTION Brake pedals must be locked together for road travel. This will insure uniform brake application and maximum stopping ability.



WARNING: Extra weight and bad traction conditions such as mud or ice increase your stopping distance. Remember that liquid in the tires, weights on the tractor or wheels, tanks filled with fertilizer, herbicides or insecticides - all these add weight and increase the distance you need in which to stop.



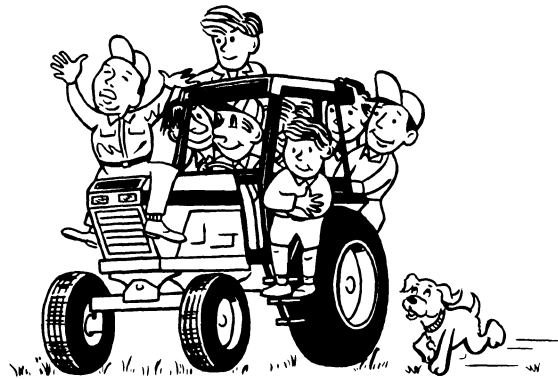
CAUTION Make sure that the weight of a trailed vehicle that is not equipped with brakes, **NEVER EXCEEDS** the weight of the tractor that is towing the vehicle. Stopping distance increases with increasing speed as the weight of the towed load increases, especially on hills and slopes.



WARNING Stay off slopes too steep for safe operation. Shift down before you start up or down a hill with a heavy load. Avoid "free wheeling".



WARNING: A frequent cause of personal injury or death is persons falling off and being run over. Do not permit others to ride. Only one person - the operator - should be on a tractor when it is in operation.



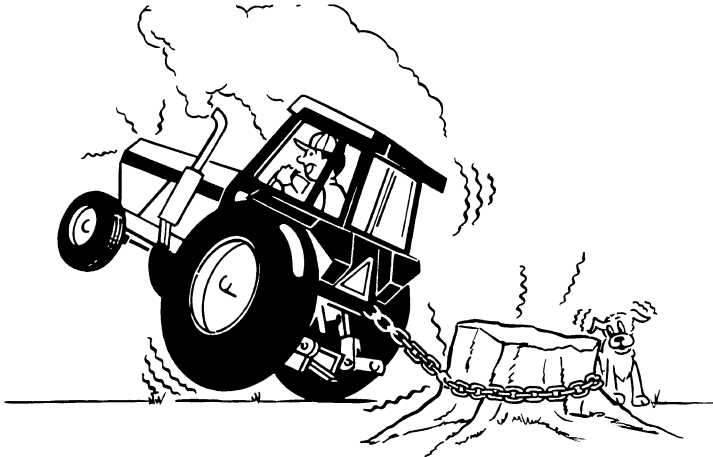
CAUTION: Do not drive on roads, or at high speed anywhere, with the differential lock engaged. Difficult steering will occur, and can result in an accident. In field operation, use the differential lock for traction improvement, but release for turning at row ends.



CAUTION Try to balance the load primarily on the implement wheels - as in loading a trailer or spreader. Avoid overloading the drawbar. Add front end weights for improved stability. Engage the clutch smoothly, avoid jerking and use the brakes cautiously to avoid jack-knifing.



WARNING Be certain both latches are fully engaged across the implement lift pins before transporting or pulling the implement.



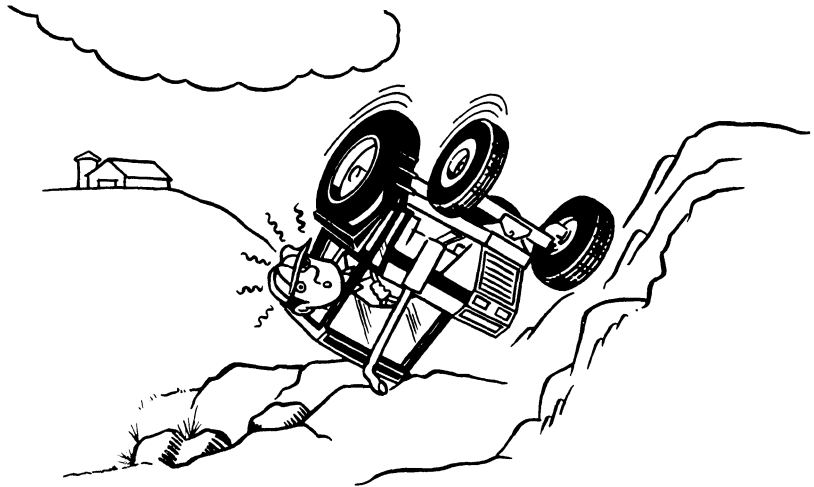
WARNING Rear upset can result if pulling from wrong location on tractor. Hitch only to the drawbar. Use 3 point hitch only with the implements designed for its use - not as a drawbar.



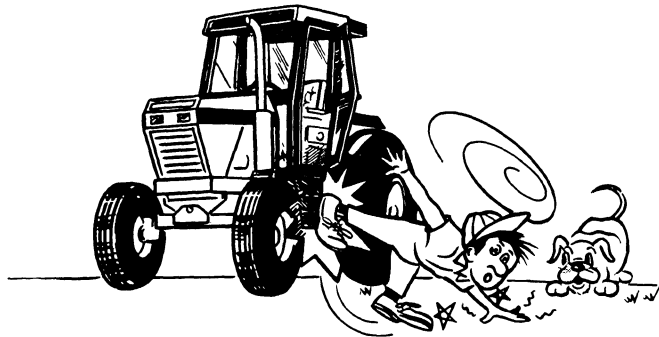
WARNING: *Securely fasten your seat belt if the tractor has a ROPS frame or cab. The seat belts can help insure your safety if they are used and maintained.*



CAUTION: *Never wear a seat belt loosely or with slack in the belt system. Never wear the belt in a twisted condition or pinched between the seat structural members.*



CAUTION: *Operate the tractor with the door closed to provide proper ROPS protection and to properly utilize the heating, ventilating or cooling systems.*



CAUTION *To provide more secure hand and foot mobility, preventing slipping and possible injury, always face the tractor when mounting and dismounting.*

Buy Now



Our support email:

ebooklibonline@outlook.com