

**3594**  
**Constant Traction Tractor**  
Operators Manual

Rac 9-11300

Reprinted





***This symbol means ATTENTION! BECOME ALERT! YOUR SAFETY IS INVOLVED. The message that follows the symbol contains important information about your safety. Carefully read the message. Make sure you fully understand the causes of possible injury or death.***

SB001

IF THIS MACHINE IS USED BY AN EMPLOYEE, IS LOANED, OR IS RENTED, MAKE SURE THAT THE OPERATOR UNDERSTANDS THE TWO INSTRUCTIONS BELOW.

BEFORE THE OPERATOR STARTS THE ENGINE:

1. GIVE INSTRUCTIONS TO THE OPERATOR ON SAFE AND CORRECT USE OF THE MACHINE.
2. MAKE SURE THE OPERATOR READS AND UNDERSTANDS THE OPERATOR'S MANUAL FOR THIS MACHINE.



**IMPROPER OPERATION OF THIS MACHINE CAN CAUSE INJURY OR DEATH.**

BEFORE STARTING THE ENGINE, DO THE FOLLOWING:

1. READ THE OPERATOR'S MANUAL.
2. READ ALL SAFETY DECALS ON THE MACHINE.
3. CLEAR THE AREA OF OTHER PERSONS.

LEARN AND PRACTICE SAFE USE OF MACHINE CONTROLS IN A SAFE, CLEAR AREA BEFORE YOU OPERATE THIS MACHINE ON A JOB SITE.

It is your responsibility to observe pertinent laws and regulations and to follow manufacturer's instructions on machine operation and maintenance.

See your Authorized Case dealer for additional operator's manuals, parts catalogs, and service manuals.

## TO THE OWNER OF A CASE INTERNATIONAL TRACTOR

Use this manual as your guide. If you follow the instructions given in this manual, your Case International tractor will work well for many years.

Your Dealer can give you assistance with CASE CORPORATION made parts and persons with special training that know the best methods of repair and maintenance for your tractor.

Call your Dealer if you need any assistance or information.

### *Your Authorized Case Dealer*



**Figure 1**

**NOTE:** *When you are in the tractor seat looking forward, the right hand and left hand of the tractor are the same as your right hand and left hand.*

## SERIAL NUMBERS

When ordering parts or when requesting information or assistance always give the model and serial numbers of your tractor.

Write the model and serial numbers of your tractor on the lines below.

1. TRACTOR MODEL NUMBER \_\_\_\_\_

2. PRODUCT IDENTIFICATION NUMBER \_\_\_\_\_

3. ENGINE SERIAL NUMBER \_\_\_\_\_

4. TRANSMISSION SERIAL NUMBER \_\_\_\_\_

5. CAB SERIAL NUMBER \_\_\_\_\_

6. AXLE SERIAL NUMBER \_\_\_\_\_

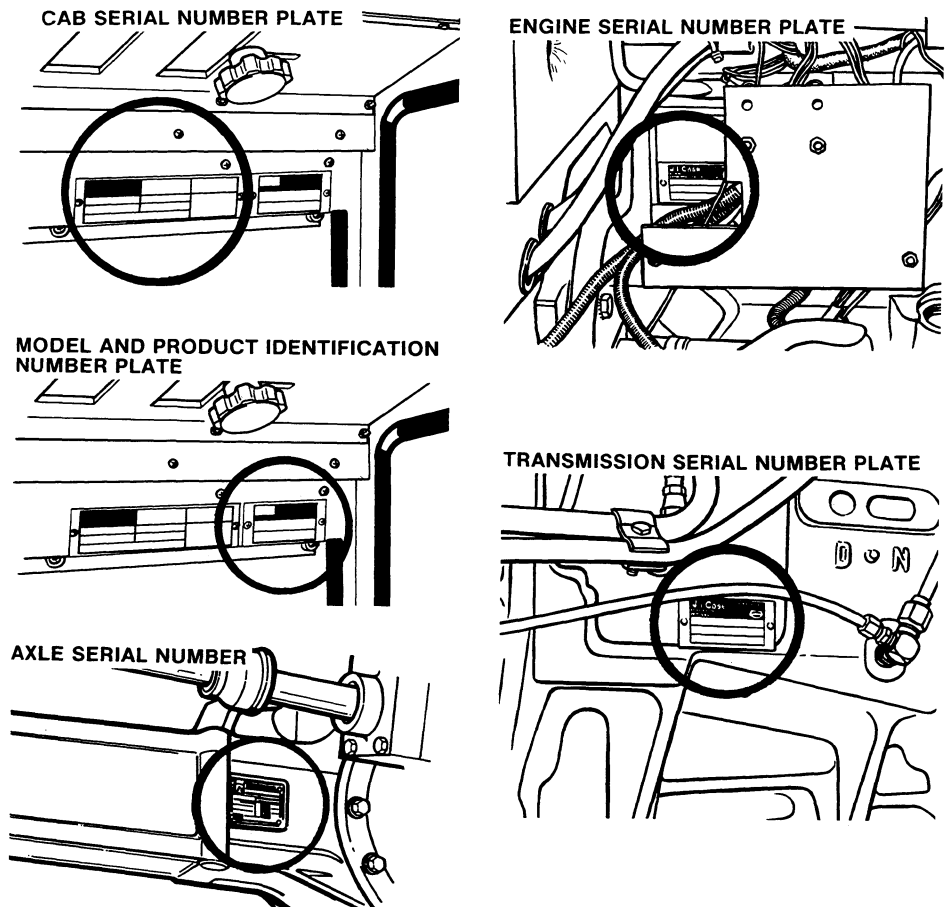


Figure 2

## TABLE OF CONTENTS

TO THE OWNER .....	I	OPERATING CONTROLS .....	52-79
SERIAL NUMBERS .....	II	Front Console .....	52,55
TABLE OF CONTENTS .....	III-IV	Foot Pedals .....	54,55
SAFETY .....	V-XV	Side Console .....	56-61
Safety Rules .....	V	Steering Column Tilt .....	62
Before Starting .....	V-VI	Telescopic Steering Column .....	63
Operation .....	VII-XII	Cab Headliner Controls .....	64,65
Service .....	XIII-XV	Ventilation Control Settings .....	65
HAND SIGNALS .....	XVI-XVII	Cab Air Flow Control .....	66
DECALS .....	XVIII-XXII	Cab Defroster Control .....	66
ENGINE SPECIFICATIONS .....	1,2	Cab Air Flow Arrangements .....	67-69
GENERAL SPECIFICATIONS .....	3-6	Air Conditioner Operation .....	70
TRAVEL SPEEDS .....	7-9	Cab Door Lock .....	70
MEASUREMENTS AND WEIGHTS .....	10	Rear View Mirrors .....	71
ROPS MACHINE WEIGHT .....	10	Cab Window Lever .....	71
TIRE AND WHEEL SPECIFICATIONS .....	11-13	Operators Seat .....	72,73
Tire Inflation Specifications .....	12,13	Seat Belts .....	74
Tire Load Capacity .....	13	Amber Warning Lamps, Direction	
TIRE SIZE COMBINATIONS .....	14	Turn Signals & SMV Symbol .....	75,76
FRONT WHEEL TREAD POSITIONS .....	15	Implement Warning Lamps	
WHEEL MOUNTING TORQUES .....	16	& SMV Symbol .....	77
INSTALLATION OF		Auxiliary Outlet Socket .....	78
STEERING STOPS .....	16,17	Heater Stop Valve .....	79
REAR WHEEL TREAD POSITIONS .....	18-20	Fuel Tank Water Trap .....	79
DUAL REAR WHEEL		OPERATING INSTRUCTIONS .....	80-143
TREAD POSITIONS .....	21,23	Run-In Procedure .....	80,81
DIESEL FUEL SPECIFICATIONS .....	24	Before Starting the Engine .....	82
FUEL CONDITIONER .....	25	Towing .....	83
DIGITAL INSTRUMENT CLUSTER .....	26-50	How to Transport the Tractor .....	83
English/Metric Mode Selection .....	27	Starting Procedure .....	84,85
Engine Hourmeter .....	27	Stopping the Engine .....	86
Turn Signal Indicator .....	27	Cold Temperature Operation .....	87,88
Service Monitors and Bar Indicators .....	28-34	Cold Temperature Starting .....	89-92
Function Buttons .....	35-39	Coolant Heater .....	89
Engine RPM Function .....	35	Ether Starting Fluid .....	90,91
PTO RPM Function .....	35	Starting Fluid	
Timer Function .....	36	Container Replacement .....	92
Area/Hour Function .....	37	Differential Lock .....	93
Area Done Function .....	37	Power Shift Transmission .....	94,95
Wheel Slip Function .....	38,39	Power Takeoff .....	96-98
Ground Speed Function .....	39	Operating PTO .....	96
Instrument Cluster Programming .....	40-48	Guards .....	97
Programming Tire Code Number .....	41-46	Operating Safety .....	98
Standard Program Code Number .....	41	Drawbar .....	99-101
Dynamic Tire Code Number .....	42,43	Safety Chain .....	102
Static Tire Code Number .....	44-46	Three Point Hitch System .....	103
Programming Attachment Width .....	47,48	Hitch System Adjustments .....	104-107
Automatic Shutdown System .....	49,50	Lift Links and Upper Link .....	104,105
TRUE GROUND SPEED SENSOR .....	51	Sway Blocks .....	106
		Extendable Draft Arms .....	106
		Anti-Sway Chain .....	106
		Lowering Speed Regulator Valve .....	107
		Draft Arm Mechanical Flotation .....	107

## TABLE OF CONTENTS

OPERATING INSTRUCTIONS (Cont'd)	LUBRICATION AND
Hitch Operation ..... 108-111	PREVENTIVE MAINTENANCE (Cont'd)
Connect Implement ..... 108	Cooling System (Cont'd)
Hitch Control Lever ..... 108	Thermostat Check ..... 165
Adjust Lift Height ..... 109	Thermostat Replacement ..... 165-167
Adjust Working Depth ..... 109	Fan Belt Adjustment ..... 168
Sensing Control ..... 110,111	Fan Belt Replacement ..... 169
Stationary Depth ..... 111	Fuel System ..... 170-175
Hydraulic Float Control ..... 111	Fuel Filter Replacement ..... 171,172
Hitch Coupler - Category III ..... 112	Fuel Strainer ..... 173,174
Hitch Coupler - Category III-II ..... 113-116	Air Removal ..... 174,175
Remote Hydraulic Control ..... 117-121	Air Induction System ..... 176
Remote Control Levers ..... 117,118	Air Filter Service Interval ..... 176
Variable Flow Control ..... 119-120	Air Filter ..... 177
Remote Valve with Load Check ..... 120	Air Filter Service Monitor ..... 178
Operating the Remote Circuits ..... 121	Air Filter Service ..... 179-182
Float Operation ..... 121	Aspirated Strata Tube Service .. 183-185
Hydraulic Motors ..... 121	Tubes & Hoses ..... 186
Hydraulic Hose Couplers ..... 122	Neutral Start Switch Service ..... 187,188
Hydraulic Hose Coupling ..... 123	Electrical System ..... 189
Remote Cylinder ..... 124	Head Lamps ..... 189
Hydraulic Cylinder Jack Pads ..... 125	Flood Lamps ..... 189
Front Wheel Fenders ..... 126-129	Flashing Amber Warning Lamps .... 190
Rear Wheel Adjustment ..... 130-132	Tail Lamps ..... 190
Dual Wheel Installation ..... 133-135	Instrument Cluster Lamps ..... 191
Loads Matched to Tractor ..... 136	Fuse Panel - Tractor & Cab ..... 191
Tractor Ballast ..... 137-143	Head Lamp Adjustment ..... 192
Tractor Weight Distribution ..... 137,138	Alternator Charging System ..... 193
Measuring Wheel Slip ..... 139	Batteries ..... 194-197
Tractor & Equipment Weight ..... 140	Service Interval ..... 194
Front End Weights ..... 141	Vent Caps ..... 194
Rear Wheel Weights ..... 142	Access to Batteries ..... 195
Tire Liquid Weight ..... 142,143	Battery Cables & Terminals ..... 195
LUBRICATION AND	Removal & Installation of Batteries .. 196
PREVENTIVE MAINTENANCE ..... 144-214	Batteries Not In Use ..... 196
Lubrication ..... 145-155	Auxiliary Battery Connections ..... 197
Engine Hourmeter ..... 145	Roll Over Protective Structure
Lubrication Chart ..... 146,147	(ROPS) ..... 198-200
Engine Lubrication ..... 148-151	Tractor Roll Over ..... 199
Engine Oil Change ..... 149	Safety Rules ..... 199
Engine Oil Filter ..... 150	ROPS Label ..... 199
Engine Oil Selection ..... 151	Maintenance & Inspection ..... 200
Transmission Lubrication ..... 152	Operators Cab ..... 201-213
Trans/Hydraulic Oil Filters ..... 153	Seat Belt Inspection & Maintenance . 201
Differential Lubrication (MFD) ..... 154	Preventive Maintenance ..... 201-203
Planetary Lubrication (MFD) ..... 155	Air Filter Service ..... 204-206
Steering & Brake System Air Removal . 156	Refrigerant Check ..... 207,208
Tire and Rim Service ..... 157,158	Compressor Belt Check
Hood & Side Panels ..... 159	& Adjustment ..... 209
Cooling System ..... 160-169	Compressor Belt Replacement ..... 210
Pressure Cooling System ..... 160	Operators Seat ..... 212,213
Cleaning the Cooling System ..... 161	Dome Lamp ..... 211
Coolant Solutions ..... 162	Console Lamp ..... 214
Grille Screens & Radiator Area ..... 163	CASE TECHNICAL MANUALS ..... 215
Water Filter and Conditioner ..... 164	

## SAFETY

### Safety Rules

Understand that your safety and the safety of other persons is measured by how you service, and operate this machine. Know the positions and operations of all controls before you try to operate. **MAKE SURE YOU CHECK ALL CONTROLS IN A SAFE AREA BEFORE STARTING YOUR WORK.**

**READ THIS MANUAL COMPLETELY** and make sure you understand the controls. All equipment has a limit. Make sure you understand the speed, brakes, steering, stability, and load characteristics of this machine before you start to operate.

The safety information given in this manual does not replace safety codes, insurance needs, federal, state and local laws. Make sure your machine has the correct equipment needed by the local laws and regulations.

J I Case is continuing to work for your safety: by making tractors with better protection and by giving these rules for safe operation.



**THIS SAFETY ALERT SYMBOL INDICATES IMPORTANT SAFETY MESSAGES IN THIS MANUAL. WHEN YOU SEE THIS SYMBOL, CAREFULLY READ THE MESSAGE THAT FOLLOWS AND BE ALERT TO THE POSSIBILITY OF PERSONAL INJURY OR DEATH.**

### Before Starting

**WARNING:** *Before starting engine study Operators Manual safety messages.*

*Read all safety signs on machine.*

*Clear the area of other persons.*

*Learn and practice safe use of controls before operating.*

*It is your responsibility to understand and follow manufacturers instructions on machine operation, service, and to observe pertinent laws and regulations.*

*Operator and Service Manuals may be obtained from your equipment dealer.*



**WARNING:** *Before starting the engine, be sure all operating controls are in neutral. This will ease starting loads on the starter and batteries and will eliminate the accidental start up of power driven equipment.*

**WARNING:** *To help prevent injury:  
BEFORE STARTING ENGINE - Put shields in place. Sit in the seat.  
Place controls in neutral.*

*BEFORE OPERATING MACHINE - Clear people away. No riders.  
Fasten seat belt.*



*WHEN OPERATING MACHINE - Keep away from power driven parts. Avoid steep slopes, embankments, ditches and rough terrain. Reduce speed when turning. In high speed travel, couple brake pedals together where applicable. On road travel, use flashing warning lights where permitted and keep SMV emblem visible from rear.  
WHEN MACHINE IS STOPPED - Engage park lock or brake. Lower raised equipment to ground. Stop engine before dismounting to service or clear machine(s).*



**CAUTION:** *Check the machine for leaks or any parts that are broken, not working correctly, or not there at all. Before you start the machine, tighten all caps, dipsticks, battery covers, etc.*



**CAUTION:** *To help prevent personal injuries during operation and maintenance, use safety shoes, a hard hat, safety glasses or goggles and good fitting clothing.*



**CAUTION:** *Provide a first aid kit for use in case of accident.*



**CAUTION:** *It is good practice to carry a fire extinguisher on the machine. Be sure that the extinguisher is properly maintained and be familiar with its proper use.*



## Operation



**WARNING:** *Operate controls only when seated in the Operators seat.*



**WARNING:** *Securely fasten your seat belt if the machine has a ROPS frame or cab. The seat belt can help insure your safety if it is used and maintained.*



**CAUTION:** *Never wear a seat belt loosely or with slack in the belt system. Never wear the belt in a twisted condition or pinched between the seat structural members.*



**WARNING:** *Operate the machine with the door closed to provide proper ROPS protection and to properly utilize the heating, ventilating or cooling systems.*



**CAUTION:** *To provide more secure hand and foot mobility, preventing slipping and possible injury, always face the machine when mounting and dismounting.*



**WARNING:** *Before leaving the machine, stop the engine, place all controls in neutral, and either set the parking brake or place range lever in PARK position as equipped.*



**CAUTION:** *Do not drive on roads, or at high speed anywhere, with the differential lock engaged. Difficult steering will occur, and can result in an accident. In field operation, use the differential lock for traction improvement, but release for turning at row ends.*



**WARNING:** *Travel speed should be such that complete control and machine stability is maintained at all times. Where possible, avoid operating near ditches, embankments and holes. Reduce speed when turning, crossing slopes, and on rough, slick, or muddy surfaces.*



**WARNING:** *Collision of high speed road traffic and slow moving machines can cause personal injury or death. On roads, use flasher/lights according to local laws. Keep SMV emblem visible.*



**CAUTION:** *Stop, look and listen before entering a highway, stay on your side of the road and pull over to let faster traffic pass. Slow down and signal as you turn off.*



**CAUTION:** *Brake pedals must be locked together for road travel. This will insure uniform brake application and maximum stopping ability.*



**WARNING:** *A frequent cause of personal injury or death is persons falling off and being run over. Do not permit others to ride. Only one person - the operator - should be on the machine when it is in operation.*

**WARNING:** *Engine can start with transmission in gear when neutral or safety start switch is by-passed:*

- 1. Do not connect across terminals on starter.*
- 2. Attach booster batteries according to safe method in Operators Manual. Then use recommended starting procedure from operators seat.*
- 3. When necessary, repair electrical system components promptly so that "jump starting" will not be attempted.*

*Machine run-away can cause injury or death to operator and bystanders.*



**CAUTION:** *Do not turn off the switch to stop the tractor with the transmission in gear when the engine is running. Power shift clutch friction could cause tractor movement on a smooth, level surface. If the ignition key is turned off for any reason, the engine should also be shutoff using the engine stop control.*



**CAUTION:** *With the engine running and the tractor in motion, if the ignition key switch is turned off and then back on, the tractor can move forward rapidly. The higher the throttle setting the more rapid the move forward will be. When the ignition key is turned off, electric solenoids close all valves to the hydraulic power shift clutches. When the key is turned back to on, oil will immediately flow to and close the clutches controlled by the power shift lever position and the tractor will move forward rapidly.*



**WARNING:** *Cab air filters remove dust in the air, but are not capable of removing chemicals used in spraying crops or in weed control. Many chemicals used for these purposes are toxic when improperly used, and can be hazardous to operators and others in the area. Follow the instructions of manufacturers of both the equipment and the chemicals regarding prohibitions against inhalation of dust or spray, personal hygiene practices, and other precautions noted by the manufacturers.*





**CAUTION:** *Make sure that the weight of a trailed vehicle that is not equipped with brakes, NEVER EXCEEDS the weight of the machine that is towing the vehicle. Stopping distance increases with increasing speed as the weight of the towed load increases, especially on hills and slopes.*



**WARNING:** *Extra weight and bad traction conditions such as mud or ice increase your stopping distance. Remember that liquid in the tires, weights on the machine or wheels, tanks filled with fertilizer, herbicides or insecticides - all these add weight and increase the distance you need in which to stop.*



**WARNING:** *Stay off slopes too steep for safe operation. Shift down before you start up or down a hill with a heavy load. Avoid "free wheeling".*



**WARNING:** *Contact with overhead power lines can cause severe electrical burns or death from electrocution. Make sure there is enough clearance between raised equipment and overhead power lines.*



**CAUTION:** *Try to balance the load primarily on the implement wheels - as in loading a trailer or spreader. Avoid overloading the drawbar. Add front end weights for improved stability. Engage the clutch smoothly, avoid jerking and use the brakes cautiously to avoid jack-knifing.*



**WARNING:** *Rear upset can result if pulling from wrong location on tractor. Hitch only to the drawbar. Use 3 point hitch only with the implements designed for its use - not as a drawbar.*



**WARNING:** *Be certain both latches are fully engaged across the implement lift pins before transporting or pulling the implement.*



**WARNING:** *Lower or block hydraulically or mechanically elevated implements and other attachments before servicing or when leaving the equipment.*



**CAUTION:** *When remote cylinders are connected to the hydraulic system, cycle the control lever about three times to remove air from the cylinder and hoses. With air in the system raised equipment can drop accidentally and cause personal injury or machine damage.*



**CAUTION:** *The implement should be lowered to the ground before uncoupling of the remote hydraulic hoses.*



**CAUTION:** *Installing an adapter on the PTO shaft, to convert the shaft diameter or to convert the number of splines on the shaft, moves the driveline connection rearward. This exposes the front universal joint and attaching mechanism. Adapters must not be installed unless the original master shield on the tractor is extended with equivalent shielding.*

*The use of an adapter is not recommended.*



**WARNING:** *PTO driven machinery can cause serious injury. Before working on or near the PTO shaft, or servicing or clearing the driven machine, put the PTO lever in the DISENGAGE position and STOP the engine.*



**WARNING:** *Rotating machine parts, stay clear, keep shields installed to help protect from clothing entanglement and injury. Wear close-fitted clothing.*



**WARNING:** *Whenever a PTO driven machine is in operation, the PTO guard must be in place for most operations to prevent injury to the operator or bystanders. Where attachments, such as pumps, are installed on the PTO shaft (especially if the tractor PTO guard is moved upward or removed) extended shielding equivalent to the PTO guard must be installed with the attachment. Install the PTO guard to its original position immediately when the attachment is removed. When the PTO is not in use, the tubular guard must be installed over the end of the PTO shaft.*



**WARNING:** *When doing stationary PTO work and dismantling from the tractor with the PTO running, keep clear of all moving parts as they are a potential safety hazard.*



**WARNING:** *If this tractor is equipped with a 1000 RPM PTO, be sure implements are matched for this drive speed. Center and lock drawbar when using PTO.*

**Buy Now**



Our support email:

[ebooklibonline@outlook.com](mailto:ebooklibonline@outlook.com)