

**7130/7140/7150
Tractors**

Operator's Manual

9-12943

Reprinted





This symbol means ATTENTION! BECOME ALERT! YOUR SAFETY IS INVOLVED. The message that follows the symbol contains important information about your safety. Carefully read the message. Make sure you fully understand the causes of possible injury or death.

SB001

IF THIS MACHINE IS USED BY AN EMPLOYEE, IS LOANED, OR IS RENTED, MAKE SURE THAT THE OPERATOR UNDERSTANDS THE TWO INSTRUCTIONS BELOW.

BEFORE THE OPERATOR STARTS THE ENGINE:

1. GIVE INSTRUCTIONS TO THE OPERATOR ON SAFE AND CORRECT USE OF THE MACHINE.
2. MAKE SURE THE OPERATOR READS AND UNDERSTANDS THE OPERATOR'S MANUAL FOR THIS MACHINE.



WARNING

IMPROPER OPERATION OF THIS MACHINE CAN CAUSE INJURY OR DEATH.

BEFORE STARTING THE ENGINE, DO THE FOLLOWING:

1. READ THE OPERATOR'S MANUAL.
2. READ ALL SAFETY DECALS ON THE MACHINE.
3. CLEAR THE AREA OF OTHER PERSONS.

LEARN AND PRACTICE SAFE USE OF MACHINE CONTROLS IN A SAFE, CLEAR AREA BEFORE YOU OPERATE THIS MACHINE ON A JOB SITE.

It is your responsibility to observe pertinent laws and regulations and to follow manufacturer's instructions on machine operation and maintenance.

See your Authorized Case dealer for additional operator's manuals, parts catalogs, and service manuals.

TO THE OWNER _____

TO THE OWNER

Read this manual before you start the engine or operate your tractor. If you need more information, see your dealer.

Your dealer can give you assistance with Case Corporation approved service parts. Your dealer has technicians with special training that know the best methods of repair and maintenance for your tractor.

Call your dealer if you need any assistance or information.

MODEL 7130 TRACTOR With Mechanical Front Drive



A10417.55

NOTE: *When you are in the tractor seat looking forward, the right hand and left hand of the tractor are the same as your right hand and left hand.*

TO THE OWNER _____

MODEL 7140 TRACTOR
With Two Wheel Drive



A10471.55

MODEL 7150 TRACTOR
Mechanical Front Drive



A10480

GENERAL TABLE OF CONTENTS

Safety/Decals	6-14
Instruments/Controls	15-50
Operating Instructions.....	51-89
Field Operation.....	90-144
Tires/Wheels/Spacing/Ballast.....	145-193
Lubrication/Filters/Fluids	194-237
Maintenance/Adjustments.....	238-250
Electrical System.....	251-263
Specifications	264-275
Detail Index.....	276-280

IDENTIFICATION NUMBERS _____

PRODUCT IDENTIFICATION AND SERIAL NUMBERS

Write your machine Model Number, Product Identification Number (P.I.N.), and Serial Numbers of major components on the lines provided. If needed, give these numbers to your dealer when you need parts or information for your machine.

1. TRACTOR MODEL NUMBER _____

2. PRODUCT IDENTIFICATION NUMBER *JJA _____ *

3. ENGINE SERIAL NUMBER _____

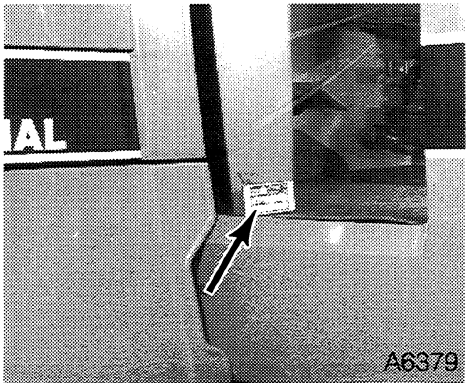
4. TRANSMISSION SERIAL NUMBER _____

5. CAB OR ROPS SERIAL NUMBER _____

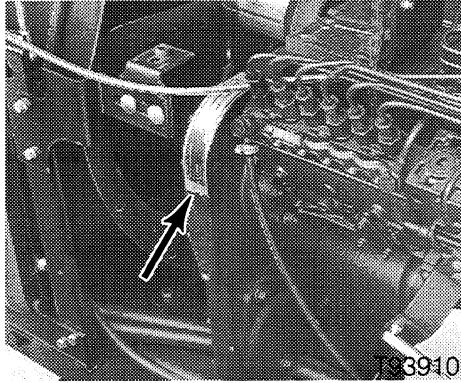
6. AXLE SERIAL NUMBER _____

IDENTIFICATION NUMBERS

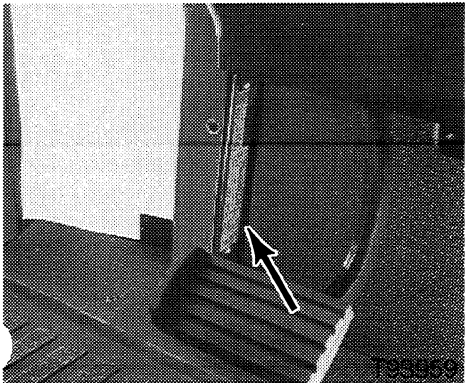
Identification Number Locations



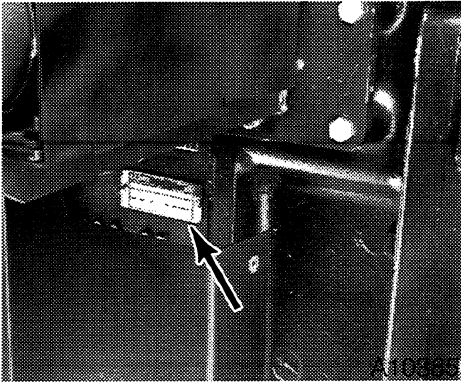
Tractor Model and Product Identification Number



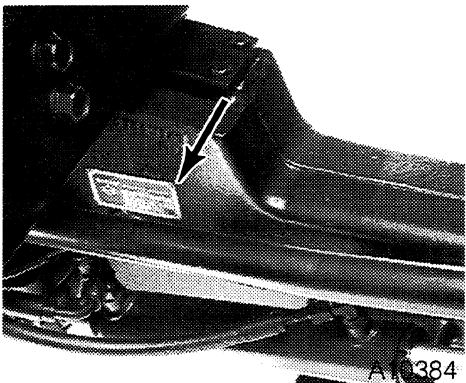
Engine Serial Number



ROPS Serial Number



Transmission Serial Number



MFD Axle Serial Number

SAFETY

Understand that your safety and the safety of other persons is measured by how you service and operate this machine. Know the positions and operations of all controls before you try to operate this machine. **MAKE SURE YOU CHECK ALL CONTROLS IN A SAFE AREA BEFORE STARTING YOUR WORK.**

READ THIS MANUAL COMPLETELY and make sure you understand the controls. All equipment has a limit. Make sure you understand the speed, brakes, steering, stability and load characteristics of this machine before you start to operate this machine.

The safety information given in this manual does not replace safety codes, insurance needs, federal, state and local laws. Make sure your machine has the correct equipment needed by the local laws and regulations.

The Case Corporation is continuing to work for your safety: by making tractors with better protection and by giving these rules for safe operation.



THIS SAFETY ALERT SYMBOL INDICATES IMPORTANT SAFETY MESSAGES IN THIS MANUAL. WHEN YOU SEE THIS SYMBOL, CAREFULLY READ THE MESSAGE THAT FOLLOWS AND BE ALERT TO THE POSSIBILITY OF PERSONAL INJURY OR DEATH.

M171B

SAFETY/DECALS

Safety Rules

- Before starting the engine, be sure all operating controls are in neutral or park lock position. This will eliminate accidental movement of the machine or start up of power driven equipment. R106E
- Operate controls only when seated in the operators seat. R137A
- Securely fasten your seat belt. Your tractor is equipped with a ROPS cab or frame for your protection. The seat belt can help insure your safety if it is used and maintained. Never wear a seat belt loosely or with slack in the belt system. Never wear the belt in a twisted condition or pinched between the seat structural members. R271A
- A frequent cause of personal injury or death is persons falling off and being run over. Do not permit others to ride. Only one person - the operator - should be on the machine when it is in operation. R115B
- Before leaving the tractor, stop the engine, put all controls in NEUTRAL and put the transmission control lever in PARK position. R268A
- Stay off slopes too steep for safe operation. Shift down before you start up or down a hill with a heavy load. Avoid "free wheeling". R123A
- Do not drive on roads, or at high speed anywhere, with the differential lock engaged. Difficult steering will occur, and can result in an accident. In field operation, use the differential lock for traction improvement, but release for turning at row ends. R116A
- Travel speed should be such that complete control and machine stability is maintained at all times. Where possible, avoid operating near ditches, embankments and holes. Reduce speed when turning, crossing slopes, and on rough, slick, or muddy surfaces. R109B
- Collision of high speed road traffic and slow moving machines can cause personal injury or death. On roads, use flasher/lights according to local laws. Keep SMV emblem visible. Pull over to let faster traffic pass. Slow down and signal before turning off. R110E
- Brake pedals must be locked together for road travel. This will insure uniform brake application and maximum stopping ability. R112A
- Make sure that the weight of a trailed vehicle that is not equipped with brakes, NEVER EXCEEDS the weight of the machine that is towing the vehicle. Stopping distance increases with increasing speed as the weight of the towed load increases, especially on hills and slopes. R114B

SAFETY/DECALS

- Extra weight and bad traction conditions such as mud or ice increase your stopping distance. Remember that liquid in the tires, weights on the machine or wheels, tanks filled with fertilizer, herbicides or insecticides - all these add weight and increase the distance you need in which to stop. R113B
- Rear upset can result if pulling from wrong location on tractor. Hitch only to the drawbar. Use 3 point hitch only with the implements designed for its use - NOT as a drawbar. R119A
- PTO driven machinery can cause serious injury. Before working on or near the PTO shaft, or servicing or clearing the driven machine, put the PTO lever in the DIS-ENGAGE position and STOP the engine. R154A
- Whenever a PTO driven machine is in operation, the PTO guard must be in place for most operations to prevent injury to the operator or bystanders. Where attachments, such as pumps, are installed on the PTO shaft (especially if the tractor PTO guard is moved upward or removed), extended shielding equivalent to the PTO guard must be installed with the attachment. Install the PTO guard to its original position immediately when the attachment is removed. R273A
- When doing stationary PTO work and dismounting from the tractor with the PTO running, keep clear of all moving parts as they are a potential safety hazard. R127A
- Never operate the engine in a closed building. Proper ventilation is required under all circumstances. R142A
- Never refuel the machine when the engine is hot or running. Never smoke while refueling. R139C
- Check and service cooling system according to maintenance instructions. Hot coolant can spray out if radiator cap is removed while system is hot. To remove radiator cap, let system cool, turn to first notch, then wait until all pressure is released. Scalding can result from fast removal of radiator cap. R305A
- Hydraulic oil or diesel fuel leaking under pressure can penetrate the skin and cause infection or other injury.
To Prevent Personal Injury:
Relieve all pressure, before disconnecting fluid lines.
Before applying pressure, make sure all connections are tight and components are in good condition.
Never use your hand to check for suspected leaks under pressure.
Use a piece of cardboard or wood for this purpose.
If injured by leaking fluid, see your doctor immediately. R149B
- Battery explosion and/or damage to electrical components can result from improper connection of booster batteries or charger. Connect positive to positive and negative to negative. Externally, battery acid can cause burns and blindness, and taken internally it is poison. R146B

SAFETY/DECALS

- It is good practice to carry a fire extinguisher on the machine. Be sure that the extinguisher is properly maintained and be familiar with its proper use. R102B
- This tractor is equipped with a spring applied mechanical front wheel drive (MFD) clutch and a front axle limited slip differential. Even with the MFD engaging switch in the OFF position, the front axle clutch can propel both front wheels if any of the following conditions occur:
 1. The engine is turned off.
 2. The engine is stopped when the rear wheels are still coasting.
 3. Any interruption in the clutch operating hydraulic system flow or pressure or in the electrical controls for clutch operation.

For these reasons, the following service procedures must be followed.

Before rotating the rear wheels of a MFD tractor (if you are using engine power with the rear wheels supported off the ground), one of the following procedures must be done to prevent an accidental tractor movement.

1. Jack up and support BOTH front wheels completely off the ground.

OR

2. Disconnect the front wheel drive shaft.

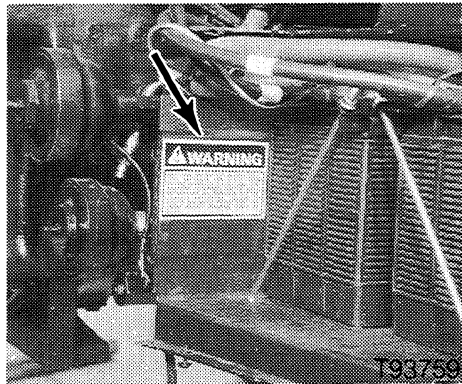
Doing one of these two procedures will insure that engagement of the MFD clutch will not result in tractor movement. R292A

DECALS

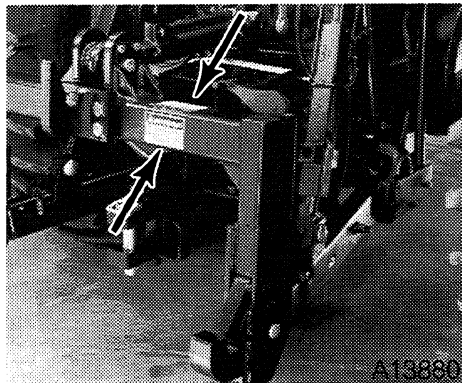
IMPORTANT: *Install new decals if the old decals are destroyed, lost, painted over or can not be read. When parts are replaced that have decals, make sure you install a new decal with each new part.*

NOTE: *New decals are available from your dealer or write to:*

*Case Corporation
Customer Relations Department
700 State Street
Racine, Wisconsin 53404*

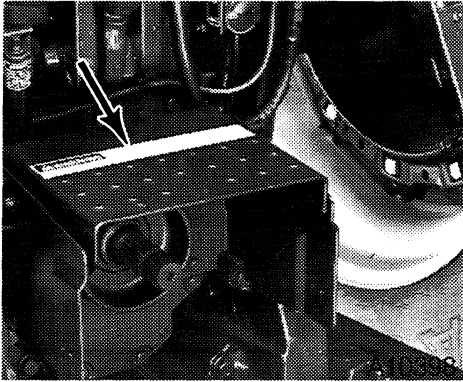



321-6714

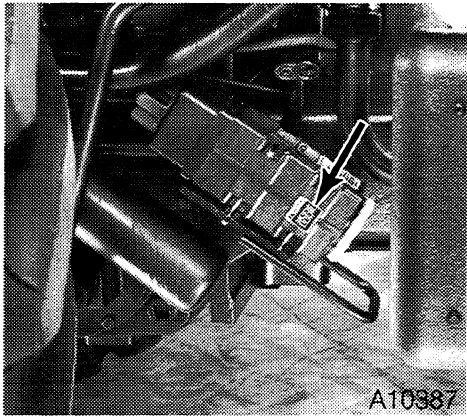


321-3339

SAFETY/DECALS



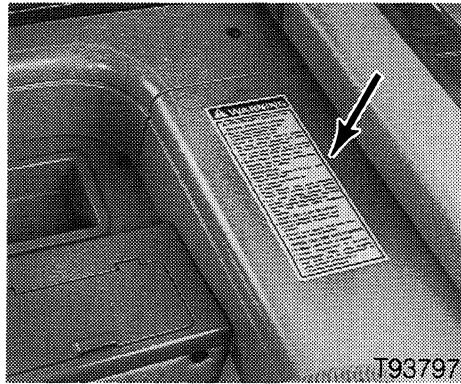
 WARNING	<p>Always keep PTO driveline shields in place to avoid entanglement.</p> <p>Be sure implements are matched to tractor PTO speeds.</p> <p>Center and lock drawbar when using PTO.</p>	<p>To prevent bottoming or separation of implement driveline, position drawbar according to implement manufacturer's recommendation or as follows:</p>															
		<table border="1"> <thead> <tr> <th colspan="2">PTO Shaft</th> <th colspan="2">PTO Shaft end to drawbar pin hole</th> </tr> </thead> <tbody> <tr> <td>540 RPM</td> <td>6 spline</td> <td>1 3/8 DIAMETER</td> <td>14 INCH (356mm)</td> </tr> <tr> <td>1000 RPM</td> <td>21 spline</td> <td>1 3/8 DIAMETER</td> <td>16 INCH (407mm)</td> </tr> <tr> <td>1000 RPM</td> <td>20 spline</td> <td>1 3/4 DIAMETER</td> <td>20 INCH (508mm)</td> </tr> </tbody> </table>	PTO Shaft		PTO Shaft end to drawbar pin hole		540 RPM	6 spline	1 3/8 DIAMETER	14 INCH (356mm)	1000 RPM	21 spline	1 3/8 DIAMETER	16 INCH (407mm)	1000 RPM	20 spline	1 3/4 DIAMETER
PTO Shaft		PTO Shaft end to drawbar pin hole															
540 RPM	6 spline	1 3/8 DIAMETER	14 INCH (356mm)														
1000 RPM	21 spline	1 3/8 DIAMETER	16 INCH (407mm)														
1000 RPM	20 spline	1 3/4 DIAMETER	20 INCH (508mm)														
<p>AVOID INJURY OR DEATH</p>		<p>1098744C1</p>															





WARNING

To avoid possible eye damage from microwave signals emitted by this sensor, do not look directly into sensor face.

A187743



WARNING

AVOID INJURY OR DEATH

BEFORE STARTING ENGINE:

- Read operators manual for safety information and operating instructions.
- Read all tractor safety signs.
- Be sure other people are clear of tractor and equipment.
- Be sure gear shift is in neutral or park and PTO control is off.
- Start engine only from seat.
- Shields are for your protection. Keep them in place.

OPERATION:

- When storing tractor in cold weather, the tractor may move when transmission is engaged and clutch pedal is depressed. Use brakes to prevent tractor movement.
- With ROPS, always buckle and adjust seat belt.
- No riders on tractor or equipment.
- Keep hands, feet, and clothing away from power driven parts.
- For road travel, couple brake pedals, use flashing warning lamps unless prohibited by law, and keep SMV emblem visible.
- Release of the clutch pedal, after down shifting several gears with the clutch disengaged, may result in abrupt deceleration of the tractor.

TRACTORS CAN BE UPSET:

- Reduce speed on turns and rough ground.
- Avoid steep slopes.
- Avoid rear upset. Pull only from drawbar, never higher.

WHEN TRACTOR HAS STOPPED:

- Engage park lock or brake.
- Lower implement to ground.
- Disengage PTO, stop engine, and wait for all movement to stop before servicing or clearing equipment.

CA194925A2Z

1968056C2

Buy Now



Our support email:

ebooklibonline@outlook.com