


**2120/2130/2140  
2150 Tractors**

Operators Manual

9-13270






	<p><i>THIS SAFETY ALERT SYMBOL INDICATES IMPORTANT SAFETY MESSAGES IN THIS MANUAL. WHEN YOU SEE THIS SYMBOL, CAREFULLY READ THE MESSAGE THAT FOLLOWS AND BE ALERT TO THE POSSIBILITY OF PERSONAL INJURY OR DEATH.</i></p>
	<p>M171B</p>

If Safety Decals on this machine use the words **Danger, Warning or Caution**, which are defined as follows:

- **DANGER:** Indicates an immediate hazardous situation which if not avoided, will result in death or serious injury. The color associated with Danger is RED.
- **WARNING:** Indicates an potentially hazardous situation which if not avoided, will result in serious injury. The color associated with Warning is ORANGE.
- **CAUTION:** Indicates an potentially hazardous situation which if not avoided, may result in minor or moderate injury. It may also be used to alert against unsafe practices. The color associated with Caution is YELLOW.

If Safety Decals on this machine are ISO two panel Pictorial, decals are defined as follows:

- The first panel indicates the nature of the hazard.
- The second panel indicates the appropriate avoidance of the hazard.
- Background color is YELLOW.
- Prohibition symbols such as   and  if used, are RED.



# WARNING

IMPROPER OPERATION OF THIS MACHINE CAN CAUSE INJURY OR DEATH. BEFORE USING THIS MACHINE, MAKE CERTAIN THAT EVERY OPERATOR:

- Is instructed in safe and proper use of the machine.
- Reads and understands the Manual(s) pertaining to the machine.
- Reads and understands ALL Safety Decals on the machine.
- Clears the area of other persons.
- Learns and practices safe use of machine controls in a safe, clear area before operating this machine on a job site.

It is your responsibility to observe pertinent laws and regulations and follow Case Corporation instructions on machine operation and maintenance.

## TO THE OWNER OF A CASE INTERNATIONAL TRACTOR

Use this manual as your guide. If you follow the instructions given in this manual, your Case International tractor will work well for many years.

Your Authorized Case Dealer can give assistance with J I Case Company made parts and persons with special training that know the best methods of repair and maintenance for your tractor.

Call your Authorized Dealer if you need any assistance or information.

### ***Your Authorized Case Dealer***



2120 VERSION

**NOTE:** Where right hand and left hand of the tractor are used in this manual, these are the same as your right hand and left hand, when you are in the seat looking forward.



2130V TRACTOR - GERMAN VERSION



2140E TRACTOR - MFD VERSION

## SERIAL NUMBERS

Compiled in this manual are the operating and maintenance instructions for the 2120, 2130, 2140 and Vineyard and Narrow V & E agricultural tractor models.

When in need of service parts always quote the tractor, transmission unit, and engine serial numbers, including prefix and suffix letters.

If information is required that is not available in this manual see the nearest authorized Case IH Dealer.

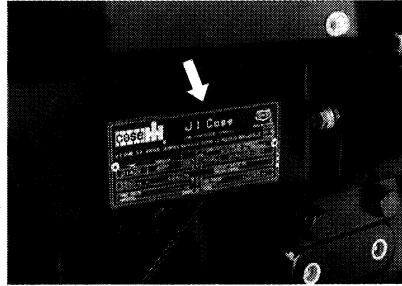
### Transmission Serial Number

EXAMPLE: 587 AB AG AC \* C G C 0001001 \*

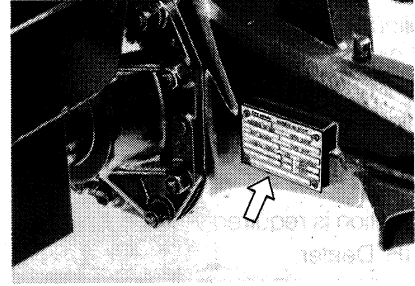
587 is the base code and the suffix letters denote the build of the unit:

AB	=	2 wheel drive
AG	=	ROPS
AC	=	8 + 8 Transmission
AD	=	12 + 12 Transmission
AE	=	12 + 12 Super Creeper Transmission

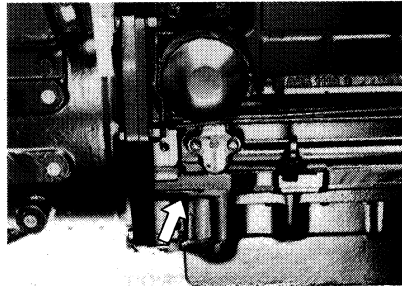
## SERIAL NUMBER LOCATION



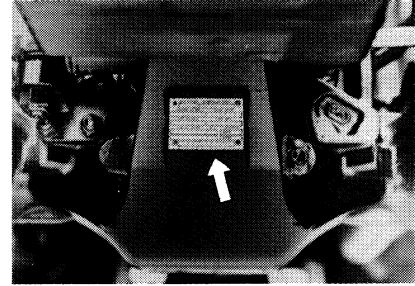
MODEL AND PRODUCT  
IDENTIFICATION NUMBER PLATE



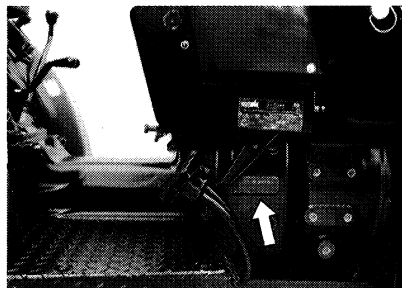
MFD AXLE SERIAL  
NUMBER PLATE (E MODELS)



ENGINE SERIAL NUMBER



MFD AXLE SERIAL  
NUMBER PLATE (V MODELS)



TRANSMISSION SERIAL  
NUMBER

For ready reference write the serial numbers of your machine in the spaces below.

TRACTOR MODEL NUMBER .....

PRODUCT IDENTIFICATION NUMBER .....

ENGINE SERIAL NUMBER .....

TRANSMISSION SERIAL NUMBER .....

MECHANICAL FRONT DRIVE AXLE SERIAL NUMBER .....

# TABLE OF CONTENTS

TO THE OWNER .....	I-II
SERIAL NUMBERS .....	III-IV
Locations .....	IV
TABLE OF CONTENTS .....	V-IV
SAFETY .....	VII-XV
Rules .....	VII
Before starting .....	VII
Operation .....	VIII
Service .....	XII
HAND SIGNALS .....	XIV-XV
CONVERSION FACTORS .....	XVI
GENERAL SPECIFICATIONS .....	1-4
2120 specifications .....	5
2130 specifications .....	6
2140 specifications .....	7
2150 specifications .....	8
TRAVEL SPEED .....	9-14
APPROXIMATE MEASUREMENTS ..	15-18
TIRE AND WHEEL EQUIPMENT ...	19-23
FRONT TREAD WIDTHS (2 WD) ...	25-26
FRONT TREAD WIDTHS (4 WD) ...	27
REAR TREAD WIDTHS .....	28-29
OPERATION .....	
Instruments and controls .....	30-33
Warning lights and gauges .....	34
Hazard switch .....	36
Direction turn switch .....	36
Horn button .....	36
Head lamp dipper switch .....	36
Engine stop control .....	37
Seat .....	38
Running procedure .....	39
Before starting the engine .....	40
Starting the engine .....	42-43
Using booster batteries .....	44
After starting the engine .....	44
Driving the tractor .....	45
Accelerator .....	45
Differential lock .....	46
4 WD engagement .....	47
Steering the tractor .....	48
Trailer brake valve .....	49
Stopping the tractor .....	50
Stopping the engine .....	50
PTO clutch lever .....	51
PTO reduction lever .....	51
PTO engagement lever .....	52
PTO shaft guard .....	53
Operating safety .....	54
Drawbar .....	55

OPERATION (continued)	
Three point linkage system .....	57
Upper link .....	58
Ballasting .....	59-60
Measuring wheel slip .....	61-62
Loads matched to the tractor .....	63
Roll bar .....	64
Hydraulic lift .....	65-75
Hydraulic system control .....	65
Position control operating .....	66
Draft control operating .....	67-68
Sensitivity control and setting .....	69
Mixed control operating .....	70
Floating condition operating .....	71
Remote valves .....	72-74
Trailer brake valve .....	75
Self sealing brakeaway couplings ...	76
Towing the tractor .....	77
Transporting the tractor .....	77

(continued)

# TABLE OF CONTENTS

LUBRICATION AND PREVENTIVE MAINTENANCE .....	78	SERVICING SCHEDULE .....	101
Hourmeter .....	79	SERVICE INTERVAL .....	102-111
Lubricants .....	80	Every 10 hours .....	102
Greasing points .....	81-83	Every 150 hours .....	103-105
Lubrication chart .....	84-85	Every 300 hours .....	106-108
Engine oil and filter .....	86-89	Every 600 hours .....	109
Transmission and hydraulic oil .....	89-90	Every 1000 hours .....	110-111
Trailer brake valve tank .....	91	MAINTENANCE .....	112-120
Transmission and hydraulic oil .....	92	Front wheel alignment (2 WD) .....	112
Front differential oil (MFD) .....	93	Front wheel alignment (4 WD) ..	113-114
Wheel hub oil (MFD) .....	94	Front beam .....	115-117
Hood removing .....	95-96	Rear beam .....	118
Front belt adjustment .....	97	Rear work lamp .....	119
Air cleaning system .....	98	Fuse box .....	120
Battery .....	99-100	Instruments panel lights .....	120



## SAFETY

### Safety Rules

Understand that your safety and the safety of other persons, is measured by how you service and operate this machine. Know the positions and operations of all controls before you try to operate. **MAKE SURE YOU CHECK ALL CONTROLS IN A SAFE AREA BEFORE STARTING WORK.**

**READ THIS MANUAL COMPLETELY** and make sure you understand the controls. All equipment has a limit. Make sure you understand the speed, brakes, steering and load characteristics of the machine before you start to operate.

The safety information given in this manual does not replace safety codes, insurance needs or national and local laws. Make sure your machine has the correct equipment required by local laws and regulations.

Case is continuing to work for your safety by making tractors with better protection and by giving these rules for safe operation.



**THIS SAFETY ALERT SYMBOL INDICATES IMPORTANT SAFETY MESSAGES IN THIS MANUAL. WHEN YOU SEE THIS SYMBOL, CAREFULLY READ THE MESSAGE THAT FOLLOWS AND BE ALERT TO THE POSSIBILITY OF PERSONAL INJURY OR DEATH.**

### Before Starting



**CAUTION:** *To help prevent personal injuries during tractor operation and maintenance, use safety shoes, a hard hat, safety glasses or goggles and good fitting clothing.*



**CAUTION:** *Provide a first aid kit for use in case of accident.*



**CAUTION:** *It is good practice to carry a fire extinguisher on the tractor. Be sure that the extinguisher is properly maintained and be familiar with its proper use.*



**CAUTION:** *Check the machine for leaks or any parts that are broken, not working correctly, or not there at all. Before you start the machine, tighten all caps, dipsticks, battery cover, etc.*



**WARNING:** *Before starting the engine, be sure all operating controls are in neutral. This will ease starting load on the starter and batteries and will eliminate the accidental start up of PTO driven equipment.*

**WARNING:** Before starting engine study Operators Manual safety messages.

Read all safety signs on machine.

Clear the area of other persons.

Learn and practice safe use of controls before operating.

It is your responsibility to understand and follow manufacturers instructions on machine operation, service, and to observe pertinent laws and regulations.

Operator and Service Manuals may be obtained from your equipment dealer.



**WARNING:** To help prevent injury:

**BEFORE STARTING THE ENGINE** - Put shields in place. Sit in the seat. Place controls in neutral.

**BEFORE OPERATING MACHINE** - Clear people away. No riders.

**WHEN OPERATING MACHINE** - Keep away from power driven parts. Avoid steep slopes, embankments, ditches and rough terrain. Reduce speed when turning. In high speed travel, couple brake pedals together where applicable. On road travel, use flashing warning lights where permitted and keep SMV emblem visible from rear.

**WHEN MACHINE IS STOPPED** - Engage park brake. Lower raised equipment to ground. Stop engine before dismounting to service or clear machine(s).



## Operation

**WARNING:** Engine can start with transmission in gear if the safety start switch is by-passed.

1 - Do not connect across terminals on starter.

2 - Attach booster batteries according to safe method in operators manual. Then use recommended starting procedure from operators seat only.

3 - When necessary, repair electrical system components promptly so that "jump starting" will not be attempted.

Machine run-away can cause injury or death to operators or bystanders.





**CAUTION:** *Brake pedals must be locked together for road travel. This will insure uniform brake application and maximum stopping ability.*



**WARNING:** *Extra weight and bad traction conditions such as mud or ice increase your stopping distance. Remember that liquid in the tires, weights on the machine or wheels, tanks filled with fertilizer, herbicides or insecticides - all these add weight and increase the distance you need in which to stop.*



**CAUTION:** *Make sure that the weight of a trailed vehicle that is not equipped with brakes, NEVER EXCEEDS the weight of the machine that is towing the vehicle. Stopping distance increases with increasing speed as the weight of the towed load increases, especially on hills and slopes.*



**CAUTION:** *Do not drive on roads, or at high speeds anywhere with the differential lock engaged. Steering will be difficult and may result in an accident. For field operation, use the differential lock to improve traction but release it for turning at row ends.*



**CAUTION:** *Try to balance the load primarily on the implement wheels as in loading a trailer or spreader. Avoid overloading the drawbar. Add front end weights for improved stability. Engage the clutch smoothly, avoid jerking and use the brakes cautiously to avoid jack-knifing.*



**WARNING:** *Rear upset can result if pulling from wrong location on tractor. Hitch only to the drawbar. Use 3 point hitch only with the implements designed for its use, not as a drawbar.*



**WARNING:** Stay off slopes too steep for safe operation. Shift down before you start up or down a hill with a heavy load. Avoid "free wheeling".



**WARNING:** Rotating machine parts, stay clear, keep shields installed to help to protect from clothing entanglement and injury. Wear close fitted clothing.



**WARNING:** PTO driven machinery can cause serious injury. Before working on or near the PTO shaft, or servicing or clearing the driven machine, put the PTO lever in the DISENGAGE position, STOP the engine and WAIT for the driven machine to stop.



**WARNING:** Whenever a PTO driven machine is in operation, the PTO guard must be in place for most operations to prevent injury to the operator or bystanders. Where attachments, such as pumps, are installed on the PTO shaft (especially if the tractor PTO guard is moved upward or removed) extended shielding equivalent to the PTO guard must be installed with the attachment. Install the PTO guard to its original position immediately when the attachment is removed. When the PTO is not in use, the tubular guard must be installed over the end of the PTO shaft.



**WARNING:** When using the 540 RPM single speed PTO, be sure implements are matched for the proper drive speed.



**CAUTION:** Installing an adapter on the PTO shaft, to convert the shaft diameter or to convert the number of splines on the shaft, moves the driveline connection rearward. This exposes the front universal joint and attaching mechanism. Adapters must not be installed unless the original master shield on the tractor is extended with equivalent shielding. The use of an adapter is not recommended.



**CAUTION:** Do not use 1000 RPM setting for implements and machines designed to operate at 540 RPM.



**WARNING.** Do not exceed the recommended speeds of the driven machine. Do not operate the P.T.O. unless the shaft and drive line shields are in position and the tachometer is working correctly. Read and learn to understand the Operators Manual supplied with any P.T.O. driven equipment which may be attached to the machine.



**WARNING:** When the P.T.O. is not in use, the shaft must be covered with a tubular guard.



**WARNING:** Tractors equipped with Mechanical Front Drive (M.F.D.) have increased traction and can climb steeper slopes. Stay off slopes too steep for safe operation. To prevent rear overturns, back up steeper slopes.



**CAUTION:** To provide more secure hand and foot mobility, preventing slipping and possible injury, always face the tractor when mounting and dismounting.



**CAUTION:** Make sure that the rim bolts, hub bolts or nuts, or hub clamp bolts are tightened to specifications. Check these torques after the first 10 hours and thereafter every 50 hours of operation until torques remain constant.



**WARNING:** Lower or block hydraulically or mechanically elevated implements and other attachments before servicing or when leaving the equipment.



**CAUTION:** When remote cylinders are connected to the hydraulic system, cycle the control lever about three times to remove air from the cylinder and hoses. With air in the system raised equipment can drop accidentally and cause personal injury or machine damage.



**CAUTION:** The implement should be lowered to the ground before uncoupling of the remote hydraulic hoses.



**WARNING:** Contact with overhead power lines can cause severe electrical burns or death from electrocution. Make sure there is enough clearance between raised equipment and overhead power lines.



**WARNING:** Before leaving the machine, stop the engine, place all controls in neutral, and set the parking brake.

**Buy Now**



Our support email:

[ebooklibonline@outlook.com](mailto:ebooklibonline@outlook.com)