

**9110-9130  
Tractor**

**Operators Manual**

9-15290

Reprinted





***This symbol means ATTENTION! BECOME ALERT! YOUR SAFETY IS INVOLVED. The message that follows the symbol contains important information about your safety. Carefully read the message. Make sure you fully understand the causes of possible injury or death.***

SB001

IF THIS MACHINE IS USED BY AN EMPLOYEE, IS LOANED, OR IS RENTED, MAKE SURE THAT THE OPERATOR UNDERSTANDS THE TWO INSTRUCTIONS BELOW.

BEFORE THE OPERATOR STARTS THE ENGINE:

1. GIVE INSTRUCTIONS TO THE OPERATOR ON SAFE AND CORRECT USE OF THE MACHINE.
2. MAKE SURE THE OPERATOR READS AND UNDERSTANDS THE OPERATOR'S MANUAL FOR THIS MACHINE.



**IMPROPER OPERATION OF THIS MACHINE CAN CAUSE INJURY OR DEATH.**

BEFORE STARTING THE ENGINE, DO THE FOLLOWING:

1. READ THE OPERATOR'S MANUAL.
2. READ ALL SAFETY DECALS ON THE MACHINE.
3. CLEAR THE AREA OF OTHER PERSONS.

LEARN AND PRACTICE SAFE USE OF MACHINE CONTROLS IN A SAFE, CLEAR AREA BEFORE YOU OPERATE THIS MACHINE ON A JOB SITE.

It is your responsibility to observe pertinent laws and regulations and to follow manufacturer's instructions on machine operation and maintenance.

See your Authorized Case dealer for additional operator's manuals, parts catalogs, and service manuals.

# CASE TECHNICAL MANUALS

Manuals are available from your Dealer for the operation, service and repair of your machine. For prompt convenient service, contact your Dealer for assistance in obtaining the manuals for your machine.

Your Dealer can expedite your order for operators manuals, parts catalogs, service manuals and maintenance records.

Always give the Machine Name, Model and P.I.N. (product identification number) or S.N. (serial number) of your machine so your Dealer can provide the correct manuals for your machine.



If for any reason your dealer cannot supply the manuals you need, write to the following address to get prices and other ordering information.

Case Co.  
2525 West Hampton Ave.  
P.O. Box 09359  
Milwaukee, WI 53209-0359

NOTE: For orders outside of United States and Canada see your nearest Case distributor.

Be sure to include the following information:

1. Type of manual (operator manual, service manual, etc.)
2. Machine name (tractor, combine, planter, etc.)
3. Model and P.I.N. (product identification number) or S.N. (serial number) of your machine.

NOTE: Do not send cash or check until you receive ordering instructions.

TO THE OWNER \_\_\_\_\_

## TO THE OWNER OF A CASE IH TRACTOR

Use this manual as your guide. If you follow the instructions given in this manual, your Case IH tractor will work well for many years.

Your dealer can give you assistance with J I Case Company made parts and persons with special training that know the best methods of repair and maintenance for your tractor.

Call your dealer if you need any assistance or information.

*Your Authorized Case IH Dealer*

### MODEL 9110 TRACTOR



**NOTE:** *When you are in the tractor seat looking forward, the right hand and left hand of the tractor are the same as your right hand and left hand.*

TO THE OWNER \_\_\_\_\_

## MODEL 9130 TRACTOR



## GENERAL TABLE OF CONTENTS

Safety/Decals .....	6
Specifications .....	17
Instruments/Controls .....	23
Operating Instructions.....	53
Field Operation.....	87
Tires/Wheels/Spacing/Ballast.....	121
Lubrication/Maintenance Charts .....	141
Lubrication/Filters/Fluids .....	145
Maintenance/Adjustments.....	177
Electrical System.....	190
Storage.....	203

IDENTIFICATION NUMBERS \_\_\_\_\_

## SERIAL NUMBERS

When ordering parts or when requesting information or assistance always give the model and serial number of your tractor.

Write the model and serial numbers of your tractor on the lines below.

1. TRACTOR MODEL NUMBER \_\_\_\_\_

2. PRODUCT IDENTIFICATION NUMBER \_\_\_\_\_

3. ENGINE SERIAL NUMBER \_\_\_\_\_

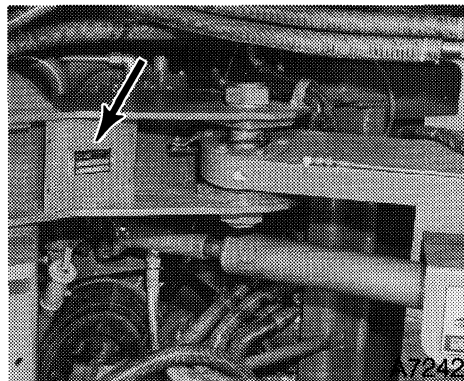
4. TRANSMISSION SERIAL NUMBER \_\_\_\_\_

5. CAB OR ROPS SERIAL NUMBER \_\_\_\_\_

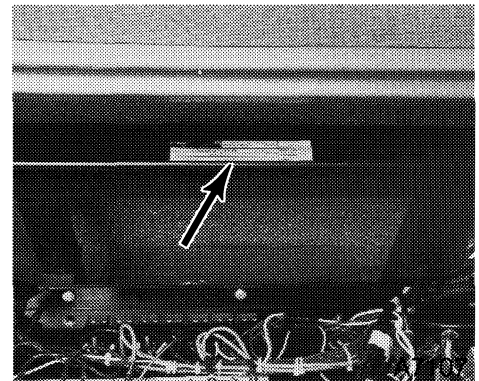
6. AXLE SERIAL NUMBER - FRONT \_\_\_\_\_

7. AXLE SERIAL NUMBER - REAR \_\_\_\_\_

### Serial Number Locations



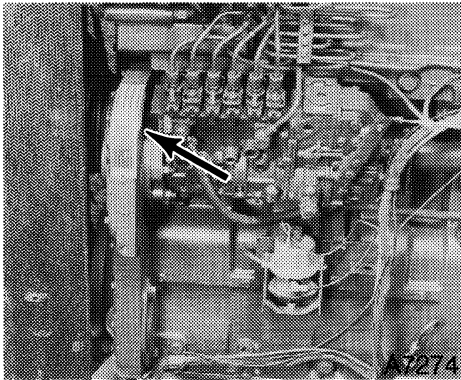
TRACTOR MODEL AND PRODUCT IDENTIFICATION NUMBERS



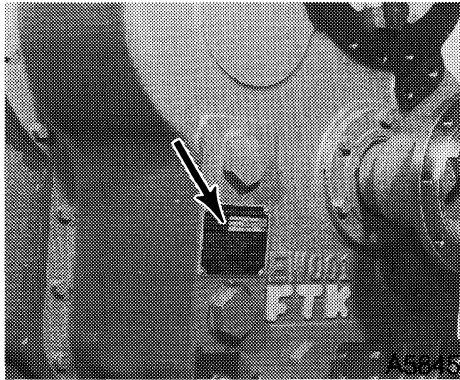
ROPS SERIAL NUMBER

IDENTIFICATION NUMBERS

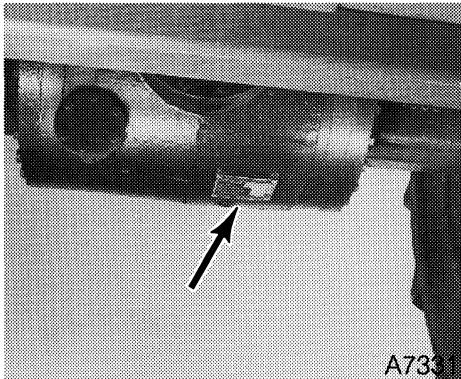
---



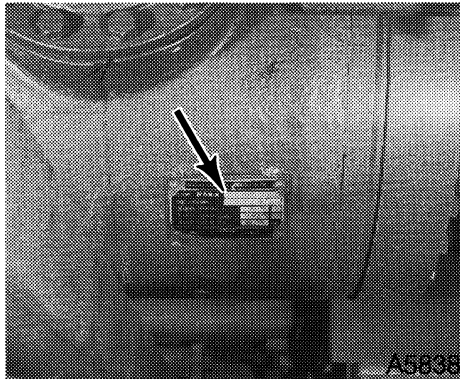
ENGINE SERIAL NUMBER



TRANSMISSION SERIAL NUMBER



AXLE SERIAL NUMBER  
ADJUSTABLE BAR TYPE - FRONT



AXLE SERIAL NUMBER  
ADJUSTABLE BAR TYPE - REAR



**Buy Now**



Our support email:

[ebooklibonline@outlook.com](mailto:ebooklibonline@outlook.com)