

9150 Tractor Operators Manual

9-15300

Reprinted

CASE III



*This symbol means **ATTENTION! BECOME ALERT! YOUR SAFETY IS INVOLVED.** The message that follows the symbol contains important information about your safety. Carefully read the message. Make sure you fully understand the causes of possible injury or death.*

SB001

IF THIS MACHINE IS USED BY AN EMPLOYEE, IS LOANED, OR IS RENTED, MAKE SURE THAT THE OPERATOR UNDERSTANDS THE TWO INSTRUCTIONS BELOW.

BEFORE THE OPERATOR STARTS THE ENGINE:

1. GIVE INSTRUCTIONS TO THE OPERATOR ON SAFE AND CORRECT USE OF THE MACHINE.
2. MAKE SURE THE OPERATOR READS AND UNDERSTANDS THE OPERATOR'S MANUAL FOR THIS MACHINE.



WARNING

IMPROPER OPERATION OF THIS MACHINE CAN CAUSE INJURY OR DEATH.

BEFORE STARTING THE ENGINE, DO THE FOLLOWING:

1. READ THE OPERATOR'S MANUAL.
2. READ ALL SAFETY DECALS ON THE MACHINE.
3. CLEAR THE AREA OF OTHER PERSONS.

LEARN AND PRACTICE SAFE USE OF MACHINE CONTROLS IN A SAFE, CLEAR AREA BEFORE YOU OPERATE THIS MACHINE ON A JOB SITE.

It is your responsibility to observe pertinent laws and regulations and to follow manufacturer's instructions on machine operation and maintenance.

See your Authorized Case dealer for additional operator's manuals, parts catalogs, and service manuals.

TO THE OWNER _____

TO THE OWNER OF A CASE IH TRACTOR

Use this manual as your guide. If you follow the instructions given in this manual, your Case IH tractor will work well for many years.

Your dealer can give you assistance with CASE CORPORATION made parts and persons with special training that know the best methods of repair and maintenance for your tractor.

Call your dealer if you need any assistance or information.

Your Authorized Case IH Dealer

MODEL 9150 TRACTOR



NOTE: *When you are in the tractor seat looking forward, the right hand and left hand of the tractor are the same as your right hand and left hand.*

TO THE OWNER



A7521.65

GENERAL TABLE OF CONTENTS

Safety/Decals	6
Specifications	17
Instruments/Controls	23
Operating Instructions.....	53
Field Operation.....	84
Tires/Wheels/Spacing/Ballast.....	118
Lubrication/Maintenance Charts	140
Lubrication/Filters/Fluids	144
Maintenance/Adjustments.....	177
Electrical System.....	193
Storage.....	208

IDENTIFICATION NUMBERS _____

SERIAL NUMBERS

When ordering parts or when requesting information or assistance always give the model and serial number of your tractor.

Write the model and serial numbers of your tractor on the lines below.

1. TRACTOR MODEL NUMBER _____

2. PRODUCT IDENTIFICATION NUMBER _____

3. ENGINE SERIAL NUMBER _____

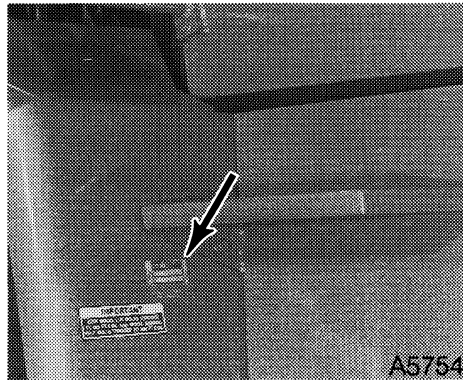
4. TRANSMISSION SERIAL NUMBER _____

5. CAB OR ROPS SERIAL NUMBER _____

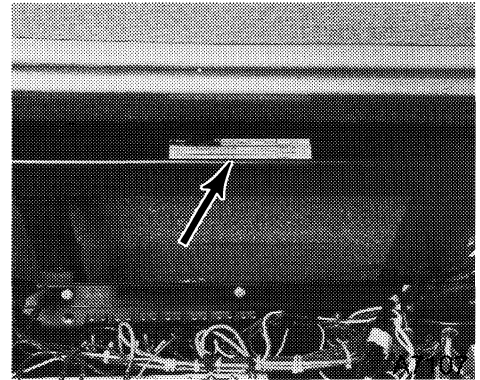
6. AXLE SERIAL NUMBER - FRONT _____

7. AXLE SERIAL NUMBER - REAR _____

Serial Number Locations

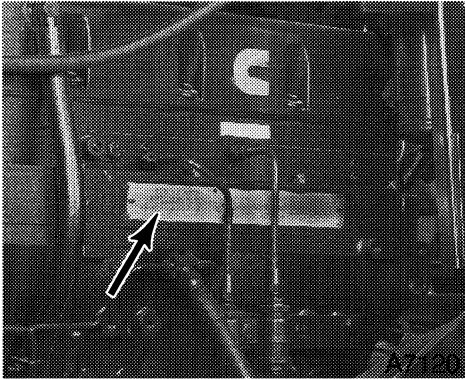


TRACTOR MODEL AND PRODUCT IDENTIFICATION NUMBERS

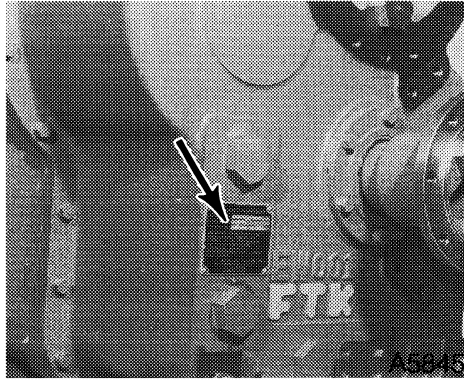


ROPS SERIAL NUMBER

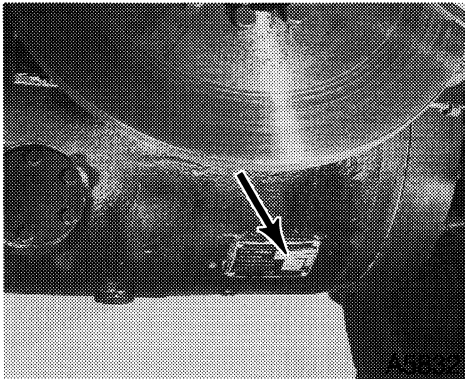
IDENTIFICATION NUMBERS



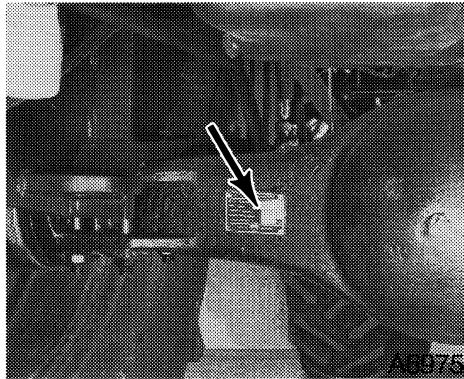
ENGINE SERIAL NUMBER



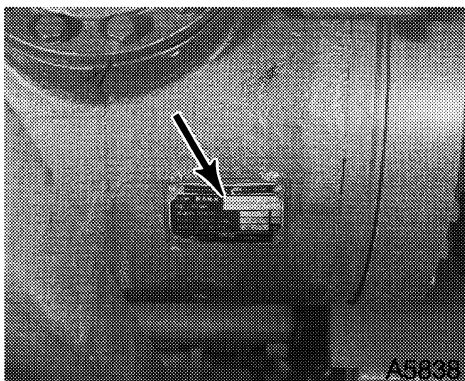
TRANSMISSION SERIAL NUMBER



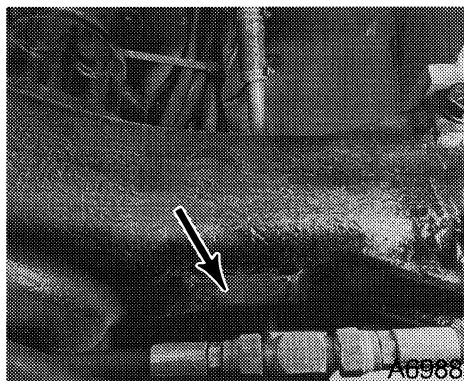
AXLE SERIAL NUMBER
ADJUSTABLE BAR TYPE - FRONT



AXLE SERIAL NUMBER
NON-ADJUSTABLE - FRONT



AXLE SERIAL NUMBER
ADJUSTABLE BAR TYPE - REAR



AXLE SERIAL NUMBER
NON-ADJUSTABLE - REAR

SECTION INDEX

Center Hinge Locking Bar	14
Decals	10
Roll Over Protective Structure (ROPS)	15
ROPS Label	16
Safety Rules	16
Tractor Roll Over	16
Safety	7
Safety Rules	7

Buy Now



Our support email:

ebooklibonline@outlook.com