

TO THE OWNER

TO THE OWNER

Read this manual before you start the engine or operate your tractor. If you need more information, see your dealer.

Your dealer can give you assistance with Case Corporation approved service parts. Your dealer has technicians with special training that know the best methods of repair and maintenance for your tractor.

Call your dealer if you need any assistance or information.

MODEL 7130E TRACTOR With Mechanical Front Drive



A14150.55

NOTE: When you are in the tractor seat looking forward, the right hand and left hand of the tractor are the same as your right hand and left hand.

Rac 9-15442
July, 1989 (Revised October, 1991)

TO THE OWNER _____

MODEL 7140E TRACTOR
With Mechanical Front Drive



GENERAL TABLE OF CONTENTS

Safety/Decals	6-14
Instruments/Controls	15-49
Operating Instructions	50-84
Field Operation.....	85-137
Tires/Wheels/Spacing/Ballast.....	138-166
Lubrication/Filters/Fluids	167-205
Maintenance/Adjustments.....	206-218
Electrical System.....	219-233
Specifications	234-241
Detail Index.....	242-245

IDENTIFICATION NUMBERS _____

PRODUCT IDENTIFICATION AND SERIAL NUMBERS

Write your machine Model Number, Product Identification Number (P.I.N.), and Serial Numbers of major components on the lines provided. If needed, give these numbers to your dealer when you need parts or information for your machine.

1. TRACTOR MODEL NUMBER _____

2. PRODUCT IDENTIFICATION NUMBER *JJA _____ *

3. ENGINE SERIAL NUMBER _____

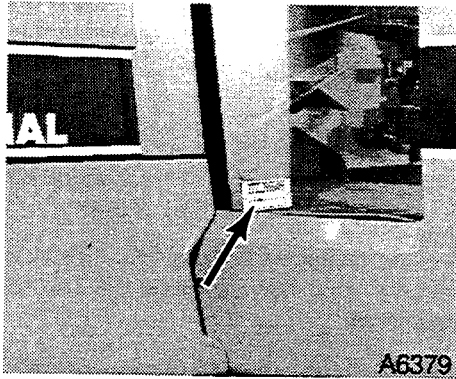
4. TRANSMISSION SERIAL NUMBER _____

5. CAB SERIAL NUMBER _____

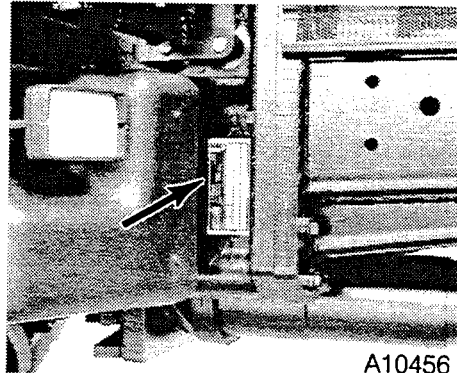
6. AXLE SERIAL NUMBER _____

IDENTIFICATION NUMBERS

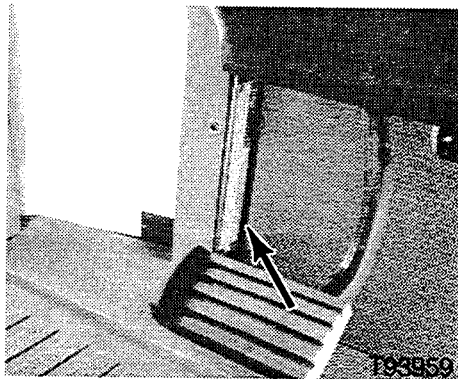
Identification Number Locations



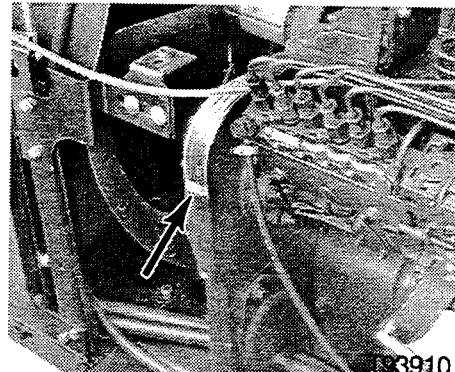
Tractor Model and Product Identification Number



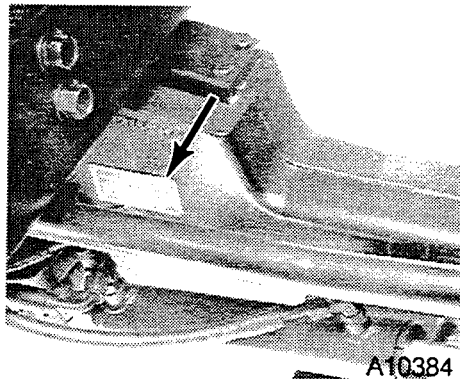
Tractor Model and Product Identification Number - Europe



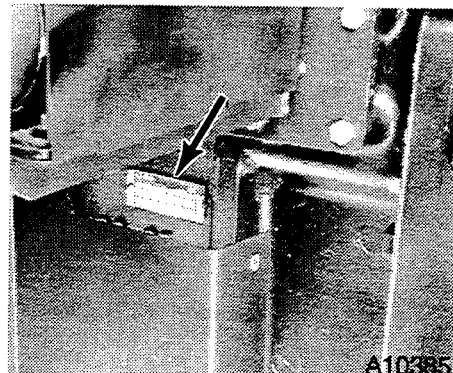
Cab Serial Number



Engine Serial Number



MFD Axle Serial Number



Transmission Serial Number

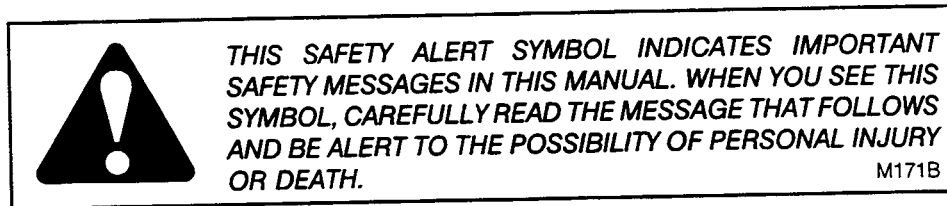
SAFETY

Understand that your safety and the safety of other persons is measured by how you service, and operate this machine. Know the positions and operations of all controls before you try to operate. **MAKE SURE YOU CHECK ALL CONTROLS IN A SAFE AREA BEFORE STARTING YOUR WORK.**

READ THIS MANUAL COMPLETELY and make sure you understand the controls. All equipment has a limit. Make sure you understand the speed, brakes, steering, stability, and load characteristics of this machine before you start to operate.

The safety information given in this manual does not replace safety codes, insurance needs, federal, state and local laws. Make sure your machine has the correct equipment needed by the local laws and regulations.

CASE CORPORATION is continuing to work for your safety: by making tractors with better protection and by giving these rules for safe operation.



Intended Use

This tractor is designed solely for use in customary agricultural or similar operation (intended use).

Use in any other way is considered as contrary to the intended use. The manufacturer accepts no liability for any damage or injury resulting from this misuse and these risks must be born solely by the user.

Compliance with and strict adherence to the conditions of operation, service and repair as specified by the manufacturer also constitute essential elements for the intended use.

This tractor should be operated, serviced and repaired only by persons familiar with all its particular characteristics and acquainted with the relevant safety rules (accident prevention).

The accident prevention regulations, all other generally recognised regulations on safety and occupational medicine and the road traffic regulations must be observed at all times.

Any arbitrary modifications carried out on the tractor will relieve the manufacturer of all liability for any resulting damage or injury.



General Safety and Accident Prevention Regulations



1. In addition to the instructions contained in this operator's manual, also observe the general safety and accident prevention regulations.
2. Always comply with local traffic regulations when driving on public roads.
3. Before starting work, familiarize yourself with all the controls and instruments and their functions. During work is too late.
4. Start the engine only from the operator's seat.
Never attempt to start engine by shorting across the starting motor terminals as the machine may immediately start to move.
5. Before moving away, always check the immediate vicinity of the machine (e.g. for children). Ensure adequate visibility.
6. Never run the engine in a closed building.
7. Clothing worn by the operator must be close-fitting. Avoid wearing loose jackets, shirts or ties.
8. Handle fuel with care as it is highly flammable. Never refuel the machine in the vicinity of naked flames or sparks. Do not smoke during refuelling.
9. Always stop the engine and remove the main switch key before refuelling. Fill fuel tank outdoors. Clean up any spilled fuel immediately.
10. Prevent fires by keeping the machine clean.
11. Take care when handling brake fluid and battery acid (toxic and corrosive).





Transporting Passengers



12. Passengers may only be carried if a proper passenger seat is fitted.
13. The carrying of passengers is otherwise not permitted.

 Operation 

14. Always adapt your ground speed to the ground conditions. Avoid making sharp turns when driving up or down slopes or when driving across the slope. Do not attempt to turn the machine with the differential lock engaged. When driving down slopes, never depress the clutch and change gear.
15. Attach trailers and/or implements correctly. The operating, steering and braking behaviour will be affected by attaching implements, trailers and ballast weights. Therefore ensure adequate steering and braking power.
16. Observe maximum permissible axle loads and total weights.
17. When making turns with towed or mounted implements, always take into consideration the width and inertia of the implement.

 Leaving the Tractor 

18. When leaving the tractor (machine), ensure that it will not roll away (apply park lock, wheel wedges) stop the engine.
19. Remove the main switch key and lock the operator's cab (when equipped).
20. Never leave the tractor (machine) unattended as long as the engine is still running.
21. Never leave the operator's platform/cab when driving.
22. Lower implement or equipment to the ground before leaving the tractor (machine).

 Implements 

23. Attach implements and trailers to the tractor (machine) only using the prescribed drawbars or hitches.
24. Take particular care when attaching trailers or implements.
25. Prevent trailer and implement from rolling away.
26. Operate tractor (machine) only when all guards are fitted and in their correct position.

SAFETY/DECALS _____

 PTO Operation 

27. Always shut off engine before connecting or disconnecting drive shaft.
28. When operating the PTO, no-one must be allowed to remain in the vicinity of the rotating PTO stub shaft or drive shaft.
29. Guards for drive shaft and PTO stub shaft must be fitted.
30. High-inertia implements do not become stationary immediately when PTO is disengaged. Allow sufficient time for implement to "coast down" to a halt before cleaning or adjusting.
31. As soon as drive shaft has been removed, install guard over PTO stub shaft.

 Service 

32. Escaping fluid (fuel or hydraulic oil) under high pressure can penetrate the skin and cause serious injury. If any fluid is injected into the skin, consult a doctor immediately as other-wise serious infections may result.
33. Dispose of oil, fuel and filters correctly.
34. Do not attempt to mount a tire unless you have the proper equipment and experience to perform the job safely.
35. Retighten wheel nuts after the specified hours in this manual
36. Always disconnect battery ground strap(s) before carrying out any electrical repairs on the machine.

 Basic Rule 

Always check the operating and road safety of the tractor (machine) before starting.

Buy Now



Our support email:

ebooklibonline@outlook.com