

9250 Tractor

Operators Manual

9-18513

Reprinted








THIS SAFETY ALERT SYMBOL INDICATES IMPORTANT SAFETY MESSAGES IN THIS MANUAL. WHEN YOU SEE THIS SYMBOL, CAREFULLY READ THE MESSAGE THAT FOLLOWS AND BE ALERT TO THE POSSIBILITY OF PERSONAL INJURY OR DEATH.

M171B

If Safety Decals on this machine use the words **Danger, Warning or Caution**, which are defined as follows:

- **DANGER:** Indicates an immediate hazardous situation which if not avoided, will result in death or serious injury. The color associated with Danger is RED.
- **WARNING:** Indicates an potentially hazardous situation which if not avoided, will result in serious injury. The color associated with Warning is ORANGE.
- **CAUTION:** Indicates an potentially hazardous situation which if not avoided, may result in minor or moderate injury. It may also be used to alert against unsafe practices. The color associated with Caution is YELLOW.

If Safety Decals on this machine are ISO two panel Pictorial, decals are defined as follows:

- The first panel indicates the nature of the hazard.
- The second panel indicates the appropriate avoidance of the hazard.
- Background color is YELLOW.
- Prohibition symbols such as   and  if used, are RED.



WARNING

IMPROPER OPERATION OF THIS MACHINE CAN CAUSE INJURY OR DEATH. BEFORE USING THIS MACHINE, MAKE CERTAIN THAT EVERY OPERATOR:

- Is instructed in safe and proper use of the machine.
- Reads and understands the Manual(s) pertaining to the machine.
- Reads and understands ALL Safety Decals on the machine.
- Clears the area of other persons.
- Learns and practices safe use of machine controls in a safe, clear area before operating this machine on a job site.

It is your responsibility to observe pertinent laws and regulations and follow Case Corporation instructions on machine operation and maintenance.

TO THE OWNER _____

TO THE OWNER

Read this manual before you start the engine or operate your tractor. If you need more information, see your dealer

Your dealer can give you assistance with Case Corporation approved service parts. Your dealer has technicians with special training that know the best methods of repair and maintenance for your tractor.

Call your dealer if you need any assistance or information.

Model 9250 Tractor

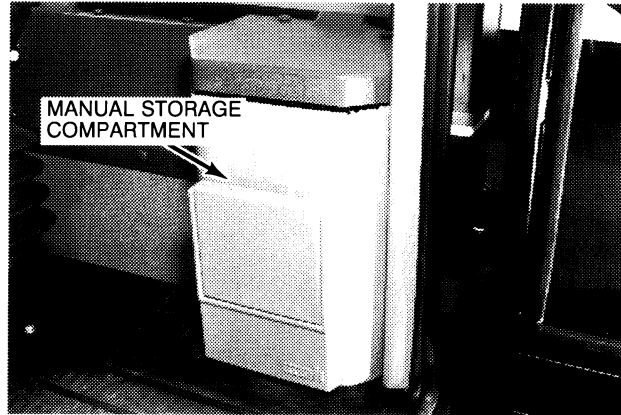


A10775 75

NOTE: When you are in the tractor seat looking forward, the right hand and left hand of the tractor are the same as your right hand and left hand.

TO THE OWNER _____

Manual Storage Compartment



Keep the operators manual in the storage compartment provided on your tractor. The operators manual must be available for use by all operators.

IMPORTANT: Also, refer to the *Cummins Engine Operation and Maintenance Manual* supplied with your tractor for supplemental engine maintenance information and procedures not covered in this manual. Adhere to the *Lubrication and Maintenance Schedule* as outlined in this manual.

GENERAL TABLE OF CONTENTS

Safety/Decals	6
Instruments/Controls	15
Operating Instructions	43
Field Operation	76
Tires/Wheels/Spacing/Ballast	116
Lubrication/Maintenance Charts	150
Lubrication/Filters/Fluids	156
Maintenance/Adjustments.....	192
Electrical System	202
Storage.....	216
Specifications	218
Detail Index	223

IDENTIFICATION NUMBERS _____

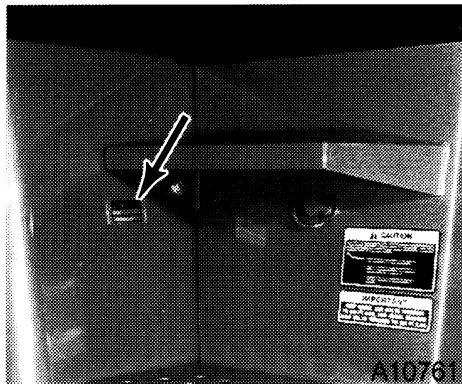
SERIAL NUMBERS

When ordering parts or when requesting information or assistance always give the model and serial number of your tractor

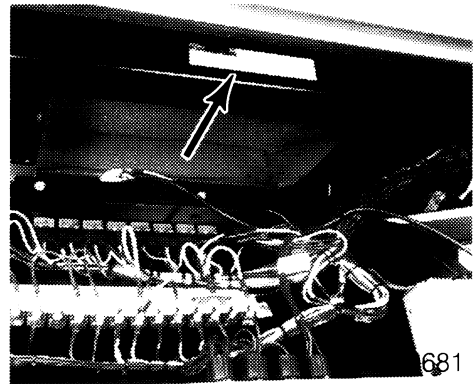
Write the model and serial numbers of your tractor on the lines below.

1. TRACTOR MODEL NUMBER _____
2. PRODUCT IDENTIFICATION NUMBER * JEE _____ *
3. ENGINE SERIAL NUMBER _____
4. TRANSMISSION SERIAL NUMBER _____
5. CAB OR ROPS SERIAL NUMBER _____
6. AXLE SERIAL NUMBER - FRONT _____
7. AXLE SERIAL NUMBER - REAR _____

Serial Number Locations

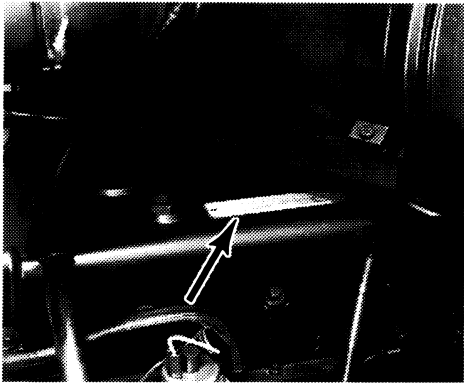


TRACTOR MODEL AND PRODUCT IDENTIFICATION NUMBERS

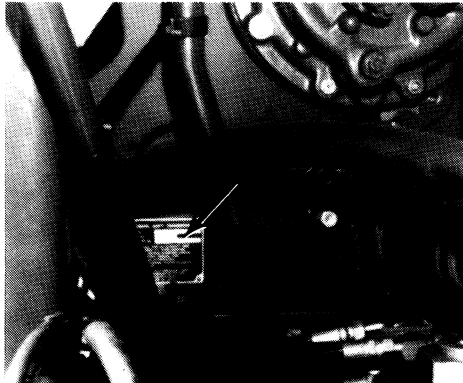


ROPS SERIAL NUMBER

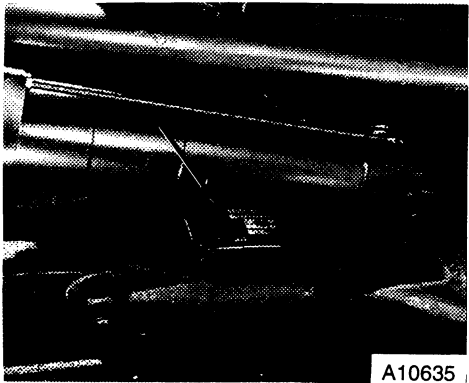
IDENTIFICATION NUMBERS



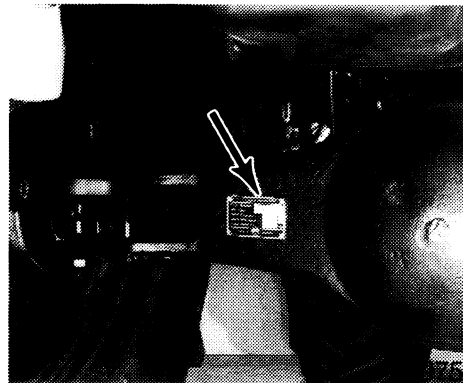
ENGINE SERIAL NUMBER



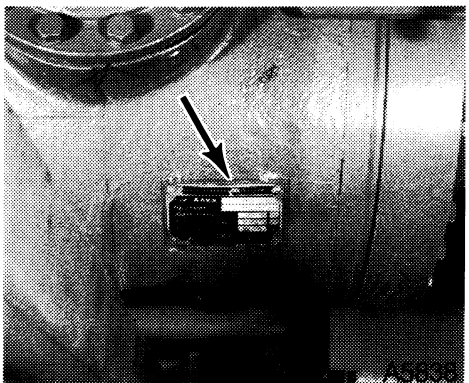
TRANSMISSION SERIAL NUMBER



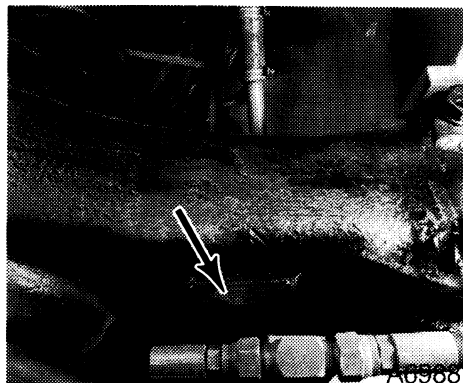
AXLE SERIAL NUMBER
STEERABLE TYPE - FRONT



AXLE SERIAL NUMBER
NON-ADJUSTABLE - FRONT



AXLE SERIAL NUMBER
ADJUSTABLE BAR TYPE -
FRONT OR REAR



AXLE SERIAL NUMBER
NON-ADJUSTABLE - REAR

SAFETY

Understand that your safety and the safety of other persons is measured by how you service and operate this machine. Know the positions and operations of all controls before you try to operate. **MAKE SURE YOU CHECK ALL CONTROLS IN A SAFE AREA BEFORE STARTING YOUR WORK.**

READ THIS MANUAL COMPLETELY and make sure you understand the controls. All equipment has a limit. Make sure you understand the speed, brakes, steering, stability and load characteristics of this machine before you start to operate.

The safety information given in this manual does not replace safety codes, insurance needs, federal, state and local laws. Make sure your machine has the correct equipment needed by the local laws and regulations.

Case is continuing to work for your safety. by making tractors with better protection and by giving these rules for safe operation.



THIS SAFETY ALERT SYMBOL INDICATES IMPORTANT SAFETY MESSAGES IN THIS MANUAL. WHEN YOU SEE THIS SYMBOL, CAREFULLY READ THE MESSAGE THAT FOLLOWS AND BE ALERT TO THE POSSIBILITY OF PERSONAL INJURY OR DEATH.

M171B

Safety Rules

- Before starting the engine, be sure all operating controls are in neutral or park lock position. This will eliminate accidental movement of the machine or start up of power driven equipment. R106E
- Operate controls only when seated in the operators seat R137A
- Securely fasten your seat belt. Your tractor is equipped with a ROPS cab or frame for your protection. The seat belt can help insure your safety if it is used and maintained. Never wear a seat belt loosely or with slack in the belt system. Never wear the belt in a twisted condition or pinched between the seat structural members R271A
- A frequent cause of personal injury or death is persons falling off and being run over. Do not permit others to ride. Only one person - the operator - should be on the machine when it is in operation R115B
- Before leaving the tractor, stop the engine, put all controls in neutral, engage the park brake and remove the key from the key switch R301A

SAFETY/DECALS

- Stay off slopes too steep for safe operation. Shift down before you start up or down a hill with a heavy load. Avoid "free wheeling". R123A
- Do not drive on roads, or at high speed anywhere, with the differential lock engaged. Difficult steering will occur, and can result in an accident. In field operation, use the differential lock for traction improvement, but release for turning at row ends. R116A
- Travel speed should be such that complete control and machine stability is maintained at all times. Where possible, avoid operating near ditches, embankments and holes. Reduce speed when turning, crossing slopes, and on rough, slick, or muddy surfaces. R109B
- Collision of high speed road traffic and slow moving machines can cause personal injury or death. On roads, use flasher/lights according to local laws. Keep SMV emblem visible. Pull over to let faster traffic pass. Slow down and signal before turning off. R110E
- Make sure that the weight of a trailed vehicle that is not equipped with brakes, NEVER EXCEEDS the weight of the machine that is towing the vehicle. Stopping distance increases with increasing speed as the weight of the towed load increases, especially on hills and slopes. R114B
- Extra weight and bad traction conditions such as mud or ice increase your stopping distance. Remember that liquid in the tires, weights on the machine or wheels, tanks filled with fertilizer, herbicides or insecticides - all these add weight and increase the distance you need in which to stop. R113B
- PTO driven machinery can cause serious injury. Before working on or near the PTO shaft, or servicing or clearing the driven machine, put the PTO lever in the DISENGAGE position and STOP the engine. R154A
- Whenever a PTO driven machine is in operation, the PTO guard must be in place for most operations to prevent injury to the operator or bystanders. Where attachments, such as pumps, are installed on the PTO shaft (especially if the tractor PTO guard is moved upward or removed), extended shielding equivalent to the PTO guard must be installed with the attachment. Install the PTO guard to its original position immediately when the attachment is removed. R273A
- When doing stationary PTO work and dismounting from the tractor with the PTO running, keep clear of all moving parts as they are a potential safety hazard. R127A
- When doing stationary PTO work, install the front and rear frame articulation lock, to prevent accidental articulation of the tractor. Put the transmission in neutral and engage the park brake. R298A

SAFETY/DECALS

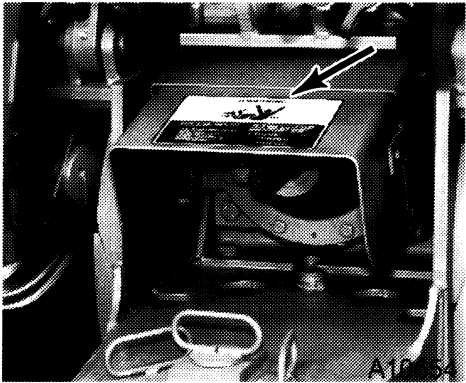
- Never operate the engine in a closed building. Proper ventilation is required under all circumstances. R142A
- Never refuel the machine when the engine is hot or running. Never smoke while refueling. R139C
- Hot coolant can spray out if radiator cap is removed while system is hot. To remove radiator cap, let system cool, turn to first notch, then wait until all pressure is released. Scalding can result from fast removal of radiator cap. R141C
- Hydraulic oil or diesel fuel leaking under pressure can penetrate the skin and cause infection or other injury
To Prevent Personal Injury.
Relieve all pressure, before disconnecting fluid lines.
Before applying pressure, make sure all connections are tight and components are in good condition.
Never use your hand to check for suspected leaks under pressure
Use a piece of cardboard or wood for this purpose
If injured by leaking fluid, see your doctor immediately. R149B
- Battery explosion and/or damage to electrical components can result from improper connection of booster batteries or charger. Connect positive to positive and negative to negative. Externally, battery acid can cause burns and blindness, and taken internally it is poison. R146B
- It is good practice to carry a fire extinguisher on the machine. Be sure that the extinguisher is properly maintained and be familiar with its proper use. R102B
- Do not turn the steering wheel until everyone is clear of the equipment and the center hinge area. Turning the steering wheel can swing the tractor and equipment from side to side. R303A
- Always use the hand rails when mounting or dismounting from the tractor. Always face the tractor when mounting and dismounting. This will provide more secure hand and feet mobility to help prevent slipping and possible injury. R304A

DECALS

IMPORTANT: *Install new decals if the old decals are destroyed, lost, painted over or can not be read. When parts are replaced that have decals, make sure you install a new decal with each new part.*

NOTE: *New decals are available from your dealer or write to.*

*Case Corporation
Customer Relations Department
700 State Street
Racine, Wisconsin 53404*



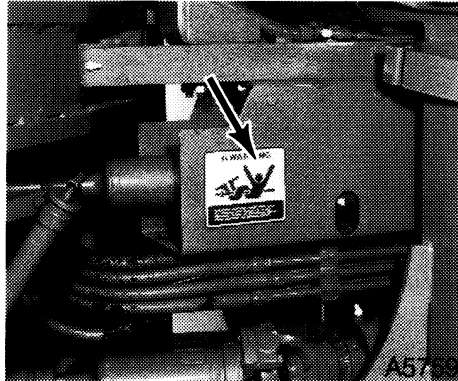
⚠ WARNING



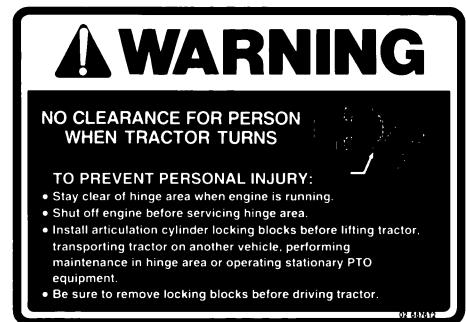
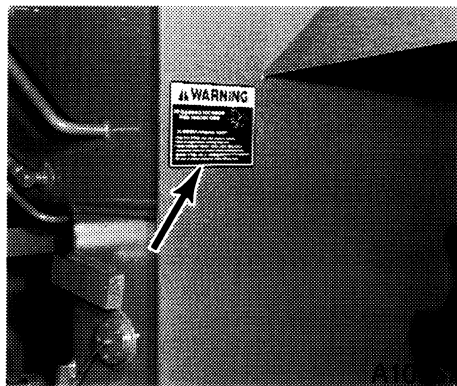
<p>ROTATING DRIVELINE - PERSONAL INJURY OR DEATH CAN RESULT FROM WRAPPING OR ENTANGLEMENT.</p> <ul style="list-style-type: none">• KEEP AWAY, KEEP HANDS, FEET AND CLOTHING AWAY FROM PTO AND OTHER MOVING PARTS.• KEEP ALL SHIELDS & GUARDS IN PLACE FOR YOUR PROTECTION.• DISENGAGE PTO AND SHUT OFF ENGINE BEFORE SERVICING TRACTOR OR IMPLEMENTS OR ATTACHING AND DETACHING IMPLEMENTS.	<p>THIS TRACTOR IS EQUIPPED WITH A 1000 RPM PTO SYSTEM. TO PREVENT POSSIBLE PERSONAL INJURY AND/OR EQUIPMENT DAMAGE DO NOT CONNECT EQUIPMENT DESIGNED TO OPERATE AT 540 RPM.</p> <p>TO PREVENT EQUIPMENT DAMAGE DRAW BAR POSITION TO BE:</p> <p style="text-align: center;">POSITION FROM GROUND 18.5 IN [470 mm]</p> <p style="text-align: center;">SHAFT END TO HITCH PIN 20.0 IN [508 mm]</p>
--	--

2-7125T1

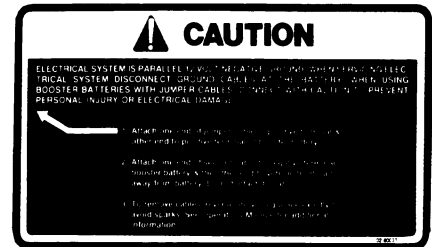
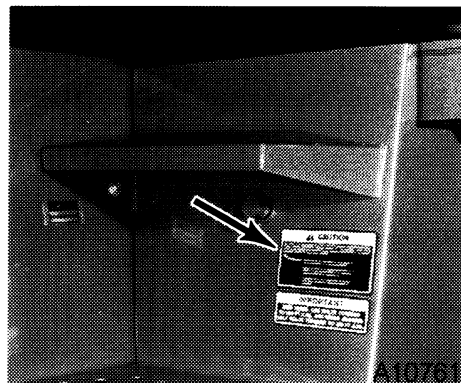
SAFETY/DECALS



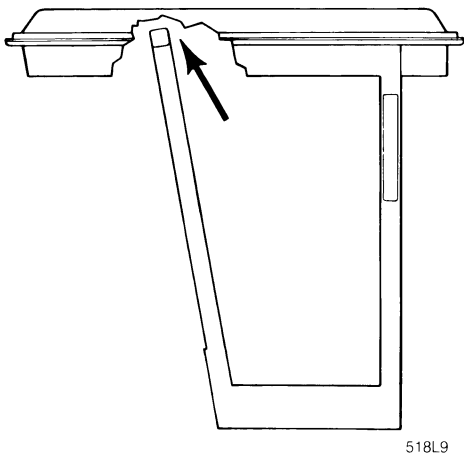
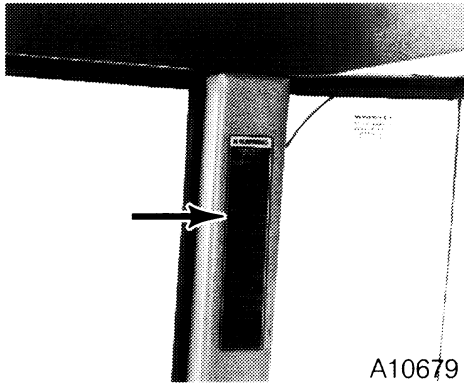
2-7126T1



2-6876T2



2-8003T1



For ROPS canopy models only.



Decal Location - on top front frame member to right of ROPS certification plate.

⚠ WARNING

AVOID INJURY OR DEATH

BEFORE STARTING ENGINE

1. Read the operator's manual for safety information and operating instructions.
2. Read all tractor safety signs.
3. Be sure other people are clear of tractor and equipment.
4. Start engine only from seat.
5. Shields are for your protection; keep them in place.

OPERATION

Always buckle and adjust seat belt.

2. No riders on tractor or equipment.
3. Keep hands, feet and clothing away from power-driven parts.
4. For road travel, use flashing warning lamps and keep the SMV emblem visible.
5. Do not pull with elastic tow ropes. Elastic stores energy and sudden release will cause an uncontrolled rope recoil.
6. Stay clear of hinge area when engine is running. Never turn steering wheel unless everyone is clear of equipment.

TRACTORS CAN BE UPSET

1. Reduce speed in turns and rough ground. Avoid steep slopes.
2. Avoid rear upset. Pull only on a drawbar, never higher.

WHEN TRACTOR HAS STOPPED

1. Engage park brake.
2. Lower implement to ground.
3. Disengage PTO, stop engine and wait for all movement to stop before servicing or clearing equipment.

60-6468T1

Buy Now



Our support email:

ebooklibonline@outlook.com