

895 - 995 Tractors

Operators Manual

9-18860

Reprinted

CASE III



This symbol means ATTENTION! BECOME ALERT! YOUR SAFETY IS INVOLVED. The message that follows the symbol contains important information about your safety. Carefully read the message. Make sure you fully understand the causes of possible injury or death.

SB001

IF THIS MACHINE IS USED BY AN EMPLOYEE, IS LOANED, OR IS RENTED, MAKE SURE THAT THE OPERATOR UNDERSTANDS THE TWO INSTRUCTIONS BELOW.

BEFORE THE OPERATOR STARTS THE ENGINE:

1. GIVE INSTRUCTIONS TO THE OPERATOR ON SAFE AND CORRECT USE OF THE MACHINE.
2. MAKE SURE THE OPERATOR READS AND UNDERSTANDS THE OPERATOR'S MANUAL FOR THIS MACHINE.

WARNING

IMPROPER OPERATION OF THIS MACHINE CAN CAUSE INJURY OR DEATH.

BEFORE STARTING THE ENGINE, DO THE FOLLOWING:

1. READ THE OPERATOR'S MANUAL.
2. READ ALL SAFETY DECALS ON THE MACHINE.
3. CLEAR THE AREA OF OTHER PERSONS.

LEARN AND PRACTICE SAFE USE OF MACHINE CONTROLS IN A SAFE, CLEAR AREA BEFORE YOU OPERATE THIS MACHINE ON A JOB SITE.

It is your responsibility to observe pertinent laws and regulations and to follow manufacturer's instructions on machine operation and maintenance.

See your Authorized Case dealer for additional operator's manuals, parts catalogs, and service manuals.

TO THE OWNER _____

TO THE OWNER OF A CASE IH TRACTOR

Use this manual as your guide. If you follow the instructions given in this manual, your Case IH tractor will work well for many years.

Your dealer can give you assistance with Case Company made parts and persons with special training that know the best methods of repair and maintenance for your tractor.

Call your dealer if you need any assistance or information.

Your Authorized Case IH Dealer

MODEL 995 TRACTOR With Mechanical Front Drive



D12902

NOTE: When you are in the tractor seat looking forward, the right hand and left hand of the tractor are the same as your right hand and left hand.

TO THE OWNER _____

MODEL 895 TRACTOR
With Two Wheel Drive



D13804C

GENERAL TABLE OF CONTENTS

Safety/Decals	6
Specifications	15
Instruments/Controls	40
Operating Instructions	63
Field Operation	102
Tires/Wheels/Spacing/Ballast	128
Lubrication/Maintenance Charts	159
Lubrication/Filters/Fluids	164
Maintenance/Adjustments	197
Electrical System	212
Storage	227

IDENTIFICATION NUMBERS _____

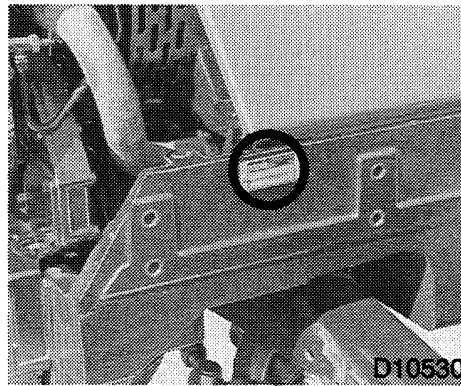
PRODUCT IDENTIFICATION AND SERIAL NUMBERS

When ordering parts or when requesting information or assistance always give the model and serial numbers of your tractor.

Write the model and serial numbers of your tractor on the lines below.

Serial Number Locations

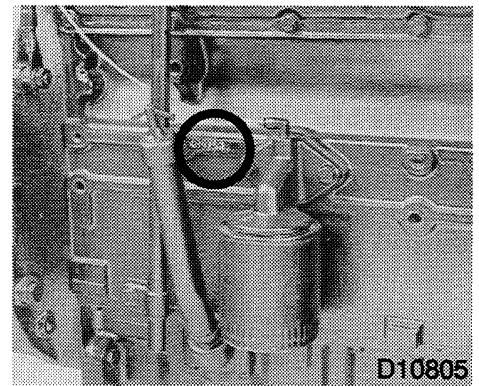
TRACTOR



Model and Product _____

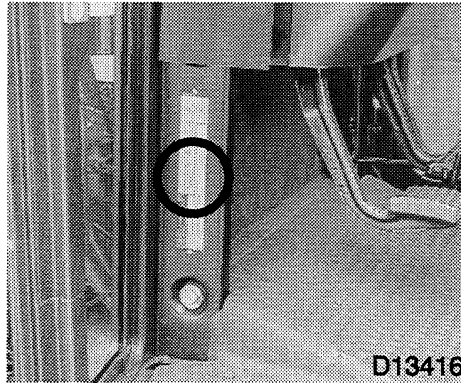
Identification Number _____

ENGINE



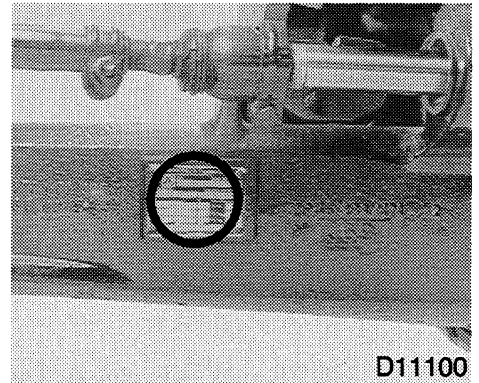
Serial Number _____

CAB



Serial Number _____

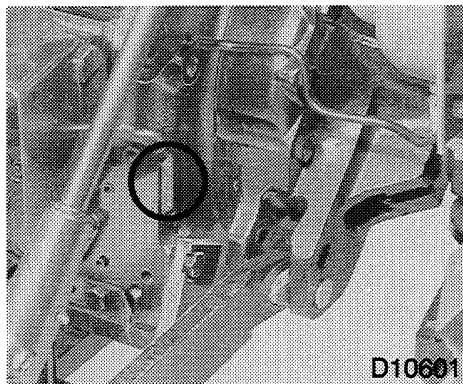
MFD AXLE



Serial Number _____

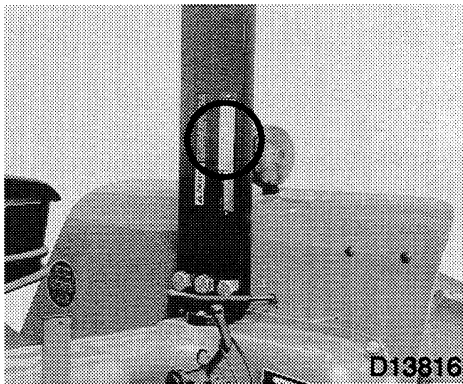
IDENTIFICATION NUMBERS _____

TRANSMISSION



Serial Number _____

ROPS FRAME



Serial Number _____

Transmission Serial Number

EXAMPLE: 293805 BTY

The suffix letter, BTY denote the build of the unit.

The first letter denotes the type of drive train, B = fast speed transmission, A or D = slow speed transmission.

The second letter denotes the bevel gear ratio,
T = 11:52, S = 14:51 and R = 12:53.

The third letter denotes the operating speeds for the PTO shafts as shown below.

- U = 555 RPM Upper Shaft
- V = 1000 RPM Lower Shaft*
- W = 580 RPM Upper Shaft
- X = 606 RPM Upper Shaft
- Y = 611 RPM Upper Shaft
- Z = 614 RPM Upper Shaft

NOTE: All upper shafts will have 6 splines.

When applicable, dual speed installations are indicated by a fourth suffix letter D. The lower shaft will usually have 21 splines. However, a 6 spline shaft may be installed for some markets.

*V denotes that only the lower PTO shaft is fitted. This shaft is for compressor (or similar) operation and may have 21 or 6 splines.

SECTION INDEX

Decals	10-12	Safety	7
Roll Over Protection Structure		Safety Rules	7-9
(ROPS)	13,14		
ROPS Label	14		
Safety Rules	14		
Tractor Roll Over	14		



SAFETY


Before operating, read and comply with the operators' manual and safety instructions.

Understand that your safety and the safety of other persons is measured by how you service, and operate this machine. Know the positions and operations of all controls before you try to operate. **MAKE SURE YOU CHECK ALL CONTROLS IN A SAFE AREA BEFORE STARTING YOUR WORK.**

READ THIS MANUAL COMPLETELY and make sure you understand the controls. All equipment has a limit. Make sure you understand the speed, brakes, steering, stability, and load characteristics of this machine before you start to operate.

The safety information given in this manual does not replace safety codes, insurance needs, federal, state and local laws. Make sure your machine has the correct equipment needed by the local laws and regulations.

CASE IH is continuing to work for your safety: by making tractors with better protection and by giving these rules for safe operation.



THIS SAFETY ALERT SYMBOL INDICATES IMPORTANT SAFETY MESSAGES IN THIS MANUAL. WHEN YOU SEE THIS SYMBOL, CAREFULLY READ THE MESSAGE THAT FOLLOWS AND BE ALERT TO THE POSSIBILITY OF PERSONAL INJURY OR DEATH.

M171A



Safety Rules



Before starting the engine, be sure all operating controls are in neutral. This will eliminate accidental movement of the machine or start up of power driven equipment.

R106C

Operate controls only when seated in the Operators seat.

R137

Securely fasten your seat belt. Your tractor is equipped with a ROPS cab or frame for your protection. The seat belt can help insure your safety if it is used and maintained. Never wear a seat belt loosely or with slack in the belt system. Never wear the belt in a twisted condition or pinched between the seat structural members.

R271

A frequent cause of personal injury or death is persons falling off and being run over. Do not permit others to ride. Only one person - the operator - should be on the machine when it is in operation.

R115A

Before leaving the tractor, stop the engine, put all controls in NEUTRAL and apply the park brake.

SAFETY/DECALS



Safety Rules



Stay off slopes too steep for safe operation. Shift down before you start up or down a hill with a heavy load. Avoid “free wheeling”. R123

Do not drive on roads, or at high speed anywhere, with the differential lock engaged. Difficult steering will occur, and can result in an accident. In field operation, use the differential lock for traction improvement, but release for turning at row ends. R116

Travel speed should be such that complete control and machine stability is maintained at all times. Where possible, avoid operating near ditches, embankments and holes. Reduce speed when turning, cross slopes, and on rough, slick, or muddy surfaces. R109A

Collision of high speed road traffic and tractors or implements can cause personal injury or death. On roads, use flasher/lights according to local laws. Keep SMV emblem visible. Pull over to let faster traffic pass. Slow down and signal before turning off. R110C

Brake pedals must be locked together for road travel. This will insure uniform brake application and maximum stopping ability. R112

Make sure that the weight of a trailed vehicle that is not equipped with brakes, NEVER EXCEEDS the weight of the machine that is towing the vehicle. Stopping distance increases with increasing speed as the weight of the towed load increases, especially on hills and slopes. R114A

Extra weight and bad traction conditions such as mud or ice increase your stopping distance. Remember that liquid in the tires, weights on the machine or wheels, tanks filled with fertilizer, herbicides or insecticides - all these add weight and increase the distance you need in which to stop. R113A

Rear upset can result if pulling from wrong location on tractor. Hitch only to the drawbar. Use 3 point hitch only with implements designed for its use - not as a drawbar. R119

PTO driven machinery can cause serious injury. Before working on or near the PTO shaft, or servicing or clearing the driven machine, put the PTO lever in the DISENGAGE position and STOP the engine. R154

Whenever a PTO driven machine is in operation, the PTO guard must be in place for most operations to prevent injury to the operator or bystanders. Where attachments, such as pumps, are installed on the PTO shaft (especially if the tractor PTO guard is moved upward or removed) extended shielding equivalent to the PTO guard must be installed with the attachment. Install the PTO guard to its original position immediately when the attachment is removed. R273

When doing stationary PTO work and dismounting from the tractor with the PTO running, keep clear of all moving parts as they are a potential safety hazard. R127

Never operate the engine in a closed building. Proper ventilation is required under all circumstances. R142

Never refuel the machine when the engine is hot and running. Never smoke while refueling. R139B

SAFETY/DECALS



Safety Rules



Check and service cooling system according to maintenance instructions.

Hot coolant can spray out if radiator cap is removed while the system is hot. To remove radiator cap, let system cool, turn to first notch, then wait until all pressure is released. Scalding can result from fast removal of radiator cap. R141

Hydraulic oil or diesel fuel leaking under pressure can penetrate the skin and cause infection or other injury.

To Prevent Personal Injury:

Relieve all pressure, before disconnecting fluid lines.

Before applying pressure, make sure all connections are tight and components are in good condition.

Never use your hand to check for suspected leaks under pressure.

Use a piece of cardboard or wood for this purpose.

If injured by leaking fluid, see your doctor immediately. R149

Battery explosion and/or damage to electrical components can result from improper connection of booster batteries or charger. Connect positive to positive and negative to negative. Externally, battery acid can cause burns and blindness, and taken internally is poison. R146

It is good practice to carry a fire extinguisher on the machine. Be sure that the extinguisher is properly maintained and be familiar with its proper use. R102A

This tractor is equipped with a spring applied mechanical front wheel drive (MFD) clutch and a front axle limited slip differential. Even with the MFD engaging switch in the OFF position, the front axle clutch can propel both front wheels if any of the following conditions occur:

1. The engine is turned off.
2. The engine is stopped when the rear wheels are still coasting.
3. Any interruption in the clutch hydraulic system flow or pressure or in the electrical controls for clutch operation.

For these reasons, the following service procedures must be followed.

Before rotating the rear wheels of a MFD tractor (if you are using engine power with the rear wheels supported off the ground), one of the following procedures must be done to prevent an accidental tractor movement:

1. Jack up and support BOTH front wheels completely off the ground.

OR

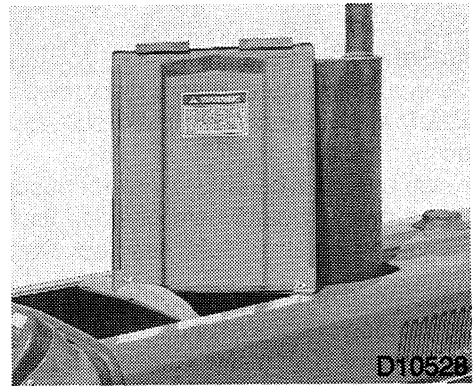
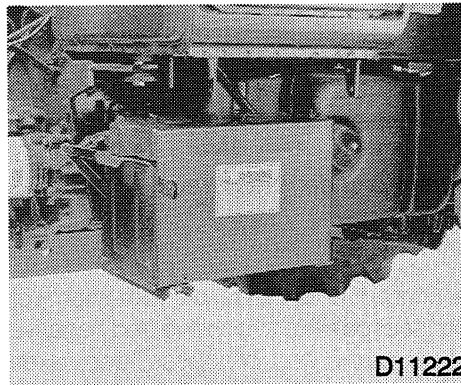
2. Disconnect the front wheel drive shaft.

Doing one of these two procedures will insure that engagement of the MFD clutch will not result in tractor movement.

DECALS

IMPORTANT: *Install new decals if the old decals are destroyed, lost, painted over or can not be read. When parts are replaced that have decals, make sure you install a new decal with each new part.*

NOTE: *New decals are available from your Dealer.*

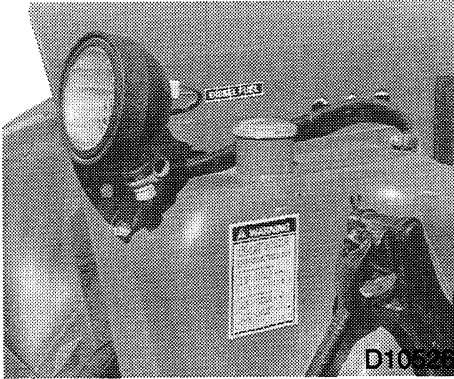


WARNING

BATTERIES CONTAIN ACID AND EXPLOSIVE GAS. EXPLOSION CAN RESULT FROM SPARKS, FLAMES, OR WRONG CABLE CONNECTIONS. TO CONNECT JUMPER CABLES OR CHARGER, SEE MANUAL(S) FOR THE CORRECT PROCEDURE. FAILURE TO FOLLOW THE ABOVE INSTRUCTIONS CAN CAUSE SERIOUS PERSONAL INJURY OR DEATH.

FD

321-6714A



! WARNING

TO AVOID CLOTHING ENTANGLEMENT AND INJURY, PTO SHIELD MUST BE POSITIONED FOR SHAFT BEING USED. KEEP DRIVELINE SHIELDS IN PLACE.

DRAWBAR MUST BE SET AND LOCKED TO PREVENT BOTTOMING OR SEPARATION OF DRIVELINE:

FOR TRACTORS WITH ONE PTO SHAFT

6 TOOTH SHAFT	14 INCH (366mm)
540 RPM	

FOR TRACTORS WITH TWO PTO SHAFTS

6 TOOTH SHAFT	14 INCH (366mm)
21 TOOTH SHAFT	18 INCH (460mm)
540 RPM	
1000 RPM	

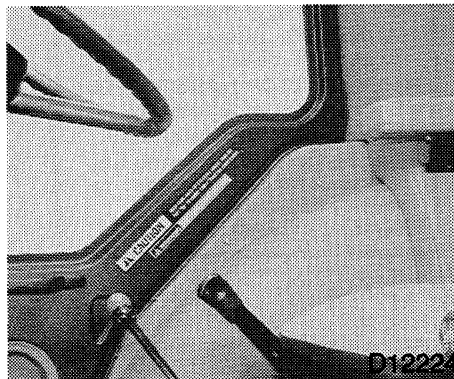
321-6769



! CAUTION

When stationary with engine running always ensure that the **HANDBRAKE** is ON and **SPEED SHIFT LEVER** is in **NEUTRAL**.

1135317R1



! CAUTION KEEP FIRM HOLD OF STEERING WHEEL AND DO NOT TRY TO LEAVE CAB IF TRACTOR OVERTURNS.

109182R1

! WARNING PTO MACHINES MAY FAIL IF OPERATED OVER RATED SPEEDS. AVOID INJURY. LIMIT RPM TO 600 OR LESS FOR 540 RPM MACHINES AND 1100 OR LESS FOR 1000 RPM MACHINES.

321-6770

Buy Now



Our support email:

ebooklibonline@outlook.com