

8455/8465 Round Baler with Tractor Hydraulics

Operators Manual

9-22858

Reprinted

CASE III



This symbol means ATTENTION! BECOME ALERT! YOUR SAFETY IS INVOLVED. The message that follows the symbol contains important information about your safety. Carefully read the message. Make sure you fully understand the causes of possible injury or death.

SB001

IF THIS MACHINE IS USED BY AN EMPLOYEE, IS LOANED, OR IS RENTED, MAKE SURE THAT THE OPERATOR UNDERSTANDS THE TWO INSTRUCTIONS BELOW.

BEFORE THE OPERATOR STARTS THE ENGINE:

1. GIVE INSTRUCTIONS TO THE OPERATOR ON SAFE AND CORRECT USE OF THE MACHINE.
2. MAKE SURE THE OPERATOR READS AND UNDERSTANDS THE OPERATOR'S MANUAL FOR THIS MACHINE.



IMPROPER OPERATION OF THIS MACHINE CAN CAUSE INJURY OR DEATH.

BEFORE STARTING THE ENGINE, DO THE FOLLOWING:

1. READ THE OPERATOR'S MANUAL.
2. READ ALL SAFETY DECALS ON THE MACHINE.
3. CLEAR THE AREA OF OTHER PERSONS.

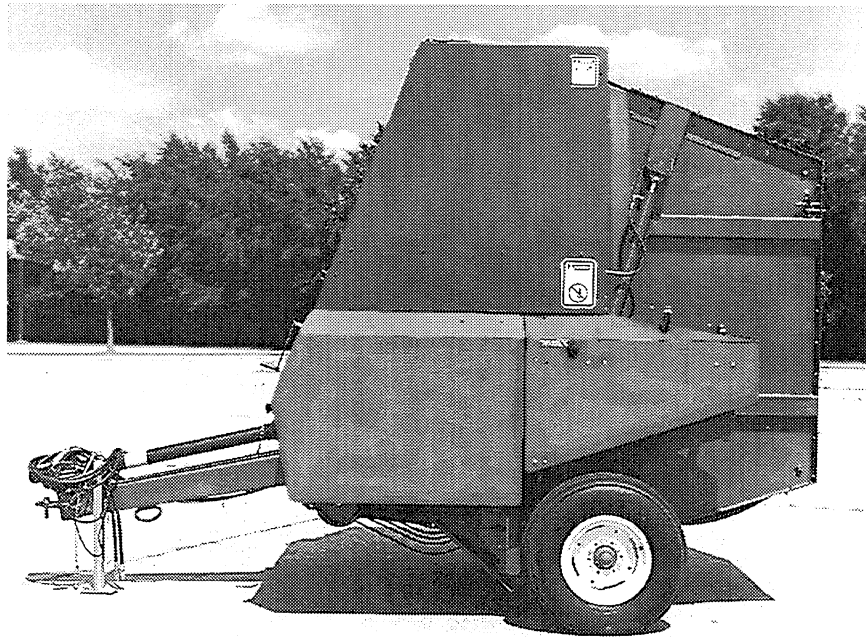
LEARN AND PRACTICE SAFE USE OF MACHINE CONTROLS IN A SAFE, CLEAR AREA BEFORE YOU OPERATE THIS MACHINE ON A JOB SITE.

It is your responsibility to observe pertinent laws and regulations and to follow manufacturer's instructions on machine operation and maintenance.

See your Authorized Case dealer for additional operator's manuals, parts catalogs, and service manuals.



8455 (4 FT) & 8465 (5 FT) Round Baler with Tractor Hydraulics



55RB-87112-6

TO OUR CUSTOMER

We appreciate your confidence in CASE IH Farm Equipment and thank you for your patronage. In preparing this manual, we hope we have furnished you with a valuable tool for operating and maintaining this fine machine. Use this manual as your guide. Practicing the instructions given here will result in many years of dependable service from your machine.

Your Dealer can give you assistance with J I Case Company parts and specially trained personnel to assist you in repair and maintenance.

Call your Dealer if you need any assistance or information.

TABLE OF CONTENTS

SPECIFICATIONS	IV
WARRANTY	V
CHECKLISTS	VI
SAFETY PRECAUTIONS	1
GENERAL INFORMATION	7
DESCRIPTION	9
SERVICING	15
PREPARATION	19
OPERATION	24
MAINTENANCE	40
MAINTENANCE - ELECTRICAL	70
TROUBLESHOOTING - AUTO MODE SYSTEM	83
TROUBLESHOOTING - BALER	87
FORMING BELTS - WARRANTY INFORMATION	93
STORAGE	95
EXTRA EQUIPMENT	96
ALPHABETICAL INDEX.....	99

SPECIFICATIONS

SPECIFICATIONS

(Specifications and design are subject to change without notice and without liability therefore.)

WEIGHTS AND DIMENSIONS

Weight (approximate), without optional mesh wrap	
8455	4800 LB (2177 kg)
8465	5250 LB (2381 kg)
Weight (approximate), with optional mesh wrap	
8455	5300 LB (2406 kg)
8465	5800 LB (2633 kg)
Tongue weight (empty), without optional mesh wrap	
8455	750 LB (340 kg)
8465	800 LB (363 kg)
Tongue weight (empty), with optional mesh wrap	
8455	690 LB (312 kg)
8465	750 LB (341 kg)
Length (overall)	
without optional mesh wrap ..	159.2 IN (4044 mm)
with optional mesh wrap	174.3 IN (4427 mm)
Height (overall)	112.5 IN (2857 mm)
Width (overall)	
8455	95.87 IN (2435 mm)
8465	110.87 IN (2816 mm)

BALE SIZE

Bale diameter (minimum)	
8455	50 IN (1219 mm)
8465	50 IN (1372 mm)
Bale diameter (maximum)	75 IN (1905 mm)
Bale width	
8455	46.5 IN (1181 mm)
8465	61.5 IN (1562 mm)
Bale weight (approximate*)	
8455	up to 1650 LB (748 kg)
8465	up to 2200 LB (998 kg)
Bale density (average*)	11 LB·FT ³ (176 kg/m ³)
Capacity (approximate*)	
8455	up to 22 ton/hr
8465	up to 26 ton/hr

*Depends on crop and moisture conditions

BALE CHAMBER

Width of chamber	
8455	46.5 IN (1181 mm)
8465	61.5 IN (1562 mm)
Number of belts	
8455	6
8465	8

Belt width	7 IN (178 mm)
Belt length	562.5 IN (14 287 mm)
Number of bale forming rolls	14
Type of rolls	steel
Bale overfill protection	yes
Bale size indicator	yes
Full bale alarm	yes
Powered riens	
8455	7
8465	9

TIRES

Tire size	31x13.5x8 ply Terra Rib
tire pressure	35 psi (2.4 bar)
Wheel bolt size	9/16-18
torque	120 LB·FT (165 N·m)

DRIVES

PTO speed	540 rpm (r/min)
optional conversion	1000 rpm (r/min)
Gearbox output shaft	730 rpm (r/min)
Forming belts	2 drives, chain
Pickup	belt and chain

PICKUP

Width, gathering	
8455	58.27 IN (1480 mm)
8465	73.23 IN (1860 mm)
Width, tine to tine	
8455	44.2 IN (1122 mm)
8465	59.8 IN (1518 mm)
Number of bars	4
Number and type of tines	
8455	36, double
8465	48, double
Tine control	cam track
Windguard	standard

BALE WRAPPING MECHANISM

Type	twine
optional system	mesh
Number of twine balls	4
Type of twine	plastic or sisal

SPECIFICATIONS / SERIAL NUMBERS

TRACTOR REQUIREMENTS

PTO speed (standard) 540 rpm (r/min)
with optional conversion 1000 rpm (r/min)
Recommended minimum PTO hp 70 hp (52 kW)
Hydraulics single remote
Electrical system 12V DC

HYDRAULIC SYSTEM

Pump none, pressure supplied by tractor hydraulic system
Baler control valve 2 solenoid valves

CONTROL AND MONITOR SYSTEM

Type micro processor
Baler controls 7 switches
Baler monitoring 13 indicator lamps
Bale tying and ejecting modes .. automatic or manual
Electrical requirement 12V DC
Fuse in control and monitor box 5 amperes

LUBRICATION

Roller Chains

Lubricant clean engine oil

Gearbox

Quantity 1.75 pints (.8 litres)
Lubricant Case IH 135H EP Gear Lube

Wheel Bearings

Lubricant Case IH 251H EP Lithium Grease

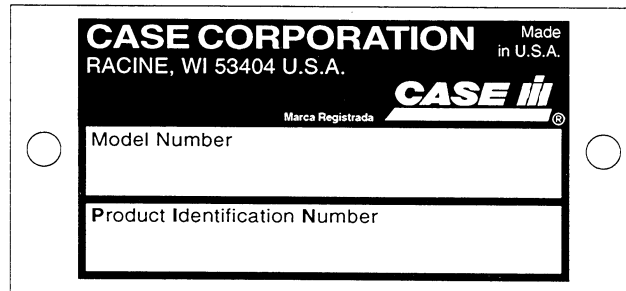
Grease Fittings

Lubricant Case IH 251H EP Lithium Grease

SERIAL NUMBERS

When parts or assistance are needed, or when writing to your Authorized Case IH Dealer, always give this information:

1. Model Number of the Machine
2. Product Identification Number



MODEL NUMBER AND PRODUCT IDENTIFICATION NUMBER PLATE

FOR LOCATION OF THE PRODUCT IDENTIFICATION NUMBER PLATE ON THIS MACHINE, SEE "GENERAL INFORMATION" SECTION IN THIS MANUAL.

Write the serial numbers of your machine on the lines below.

MODEL NUMBER _____

PRODUCT IDENTIFICATION NUMBER _____

CHECKLISTS



Use good safety practices when working around this machine.

DAILY

- ___ Lubricate all items required daily and those whose lubrication time is due.
- ___ Test chain and belt tension with the hand for excessive tightness or looseness.
- ___ Look for loose or missing bolts or parts.
- ___ Check for undue or excessive wear of belts, paying particular attention to condition of lacing pins.
- ___ Check tire pressure.
- ___ Check tractor hookup for security, proper connections and controls operable.
- ___ When the baler is transported on a road or highway, safety devices must be used for adequate warning to operators of other vehicles. Check local governmental regulations.
- ___ Check fill and pressure level of fire extinguisher, if so equipped.

BEFORE EACH SEASON CHECKLIST

- ___ Clean the baler, removing trash and dirt accumulation.
- ___ Clean roller chains, and inspect for stiffness or excessive wear. Check adjustment and alignment.
- ___ Clean with solvent any exposed surfaces which had been coated with grease. Wipe dry with a clean cloth, then lubricate with an oil-soaked rag.
- ___ Install and tension belts.
- ___ Lubricate the machine, making sure all grease fittings are in place and taking grease properly.
- ___ Run the baler at half speed for a few minutes. Observe the operation of moving parts. Watch for any signs of faulty operation, overheated bearings, and listen for clutch slipping or any other unusual sounds.
- ___ Shut off tractor engine and inspect all bearings for over-heating, excessive wear, or loose flanges and lock collars. Check roller chains and sprockets for over-heating.
- ___ Check all hydraulic hoses and couplings for damage or leaks.
- ___ Check operation of main drive slip clutch.
- ___ Check all wheel nuts. See Specifications for correct torque.
- ___ Make sure the forming belts are tracking properly.
- ___ Make sure forming belts, lacing and lacing pins are in good condition. For best results, install new lacing pins after 800 to 1000 bales.
- ___ Make sure the proper operating adjustments have been made for your crop.
- ___ Check for any special attachment which will help you do a better job.

SAFETY PRECAUTIONS

Safety Information

Understand that your safety and the safety of other persons is measured by how you service and operate this machine. Know the positions and operations of all controls before you try to operate this machine. **MAKE SURE YOU CHECK ALL CONTROLS IN A SAFE AREA BEFORE STARTING YOUR WORK.**

READ THIS MANUAL COMPLETELY and make sure you understand the controls. All equipment has a limit. Make sure you understand the speed, brakes, steering, stability, and load characteristics of this machine and your power unit before you start to operate the machine.

The safety information given in this manual does not replace safety codes, insurance needs, state and local laws. Make sure your machine has the correct equipment needed by the local laws and regulations.



THIS SAFETY ALERT SYMBOL INDICATES IMPORTANT SAFETY MESSAGES IN THIS MANUAL. WHEN YOU SEE THIS SYMBOL, CAREFULLY READ THE MESSAGE THAT FOLLOWS AND BE ALERT TO THE POSSIBILITY OF PERSONAL INJURY OR DEATH.

Read and understand all operating instructions and precautions before attempting to operate the machine.

Before doing any maintenance or service work on the machine, you must:

- Park the machine on a solid level surface.
- Close the tailgate.
- Disengage the PTO.
- Put the tractor transmission in PARK or apply the tractor parking brake.
- Turn off the baler control console.
- Stop the tractor engine and take the key with you.
- Put the tractor remote valve in the NEUTRAL position.
- Push the tailgate lockout valve in to the LOCK position.
- Look and Listen! Make sure all moving parts have stopped.

Always disengage PTO, have baler control power switch in OFF position, and shut off engine before:

1. leaving tractor seat
2. lubricating
3. cleaning the machine
4. adjusting the machine.

All shields and guards must be in position before operating the machine.

When moving bales, never use a tractor front-end loader that is not equipped with a grapple to prevent the bale from rolling down the loader frame onto the operator. If a front-end loader is used, always keep the load close to the ground to avoid off-balancing the tractor.

Never unload or store bales where bales can roll downhill.

Always operate the baler with the baler control power switch in the ON position.

SAFETY PRECAUTIONS

Never start the tractor with PTO engaged or baler control power switch in the ON position.

Always keep hands, feet, and clothing away from moving parts, and never wear loose clothing while operating the machine.

Always remove tractor ignition key when parking machine.

Make sure the tractor is in safe operating condition.

Make sure the tractor has adequate braking capabilities, especially when operating on uneven terrain.

Always install slotted hex nut and cotter pin on hitch pin below drawbar, then install klik pin when accomplishing tractor hookup.

Always install safety chain between baler and tractor drawbar.

Always remain seated when operating the machine.

Never carry riders.

Always lock tractor brakes before working on or under the machine.

Always put blocks in front of and behind the wheels of the tractor and the baler before working on or under the baler.

Do not attempt service or adjustments until all of the moving parts of the baler have come to a complete stop.

When working on the machine with the tailgate open, always have the PTO disengaged, the baler control power switch in the OFF position, and the tractor shut off. Then push the tailgate lockout valve in to the LOCKED position.

Because of the flammable nature of many hay crops, it is recommended that a fire extinguisher be placed in an accessible location on the tractor or the baler when baling. Never leave the baler with a bale inside. Always make sure the pickup area is free of hay crops before leaving the baler after baling. Take a few minutes to check for hot areas on the baler and clean loose hay from the machine.

Avoid possibility of fire by keeping tractor and baler free of trash.

Never check or lubricate chains while machine is running.

Never check belts while machine is running.

Do not attempt to remove twine from pickup area or bale chamber while machine is running.

After lubricating, servicing, or adjusting the machine, make sure all tools and equipment have been removed.

Always use a piece of cardboard or wood to search for suspected pressurized hydraulic leaks. NEVER use hands; escaping fluid under pressure can penetrate skin.

Always unload bale from bale chamber before raising or working under the machine.

Stay at least 12 FT (4 metres) away from the tailgate and ejector at all times. The tailgate and ejector operate faster than you can move away.

Always make sure the area around the tailgate and the ejector is clear for at least 12 FT (4 metres) before opening the tailgate and unloading the bale.

Before raising the baler tailgate, make sure the baler is securely fastened to the tractor drawbar. The baler will have a negative tongue weight when the tailgate is raised. This can cause the baler to tip to the rear, causing personal injury or machine damage.

Be aware of the size of the baler when maneuvering the baler, and have sufficient space available for safe operation. When opening the tailgate, make sure adequate space is available.

Be aware of the transport width and be careful when transporting the machine on narrow bridges. See Specifications for the overall dimensions.

Limit towing speed of an unloaded machine to 20 mph (32 km/h).

Do not road the baler with a bale in the bale chamber.

Always have the Slow Moving Vehicle emblem clean and visible and use adequate lights or safety warnings when roading the machine on public roads. Check your local law enforcement agencies for special requirements.

Safety Decals



This is the safety alert symbol. The safety alert symbol will direct your attention to information that involves your safety.

The words **DANGER**, **WARNING** or **CAUTION** are used with the safety alert symbol on the safety decals on the machine. For your personal safety, and the safety of those nearby, learn to recognize these safety alerts, and follow the recommended precautions and safe operating practices.



DANGER: Indicates an imminently hazardous situation that, if not avoided, will result in death or serious injury.



WARNING: Identifies a potentially hazardous situation that, if not avoided, could result in death or serious injury.



CAUTION: Identifies a potentially hazardous situation that, if not avoided, may result in minor or moderate injury.

Install new safety decals if the old safety decals are destroyed, lost, painted over, or cannot be read. Use enamel thinner to remove the old safety decal. Make sure the surface is clean and dry before the new safety decal is installed. When parts that have decals are replaced, make sure you install a new decal with each new part. New safety decals are available from your dealer.

Always keep the SMV emblem clean and properly installed on the rear of the machine.

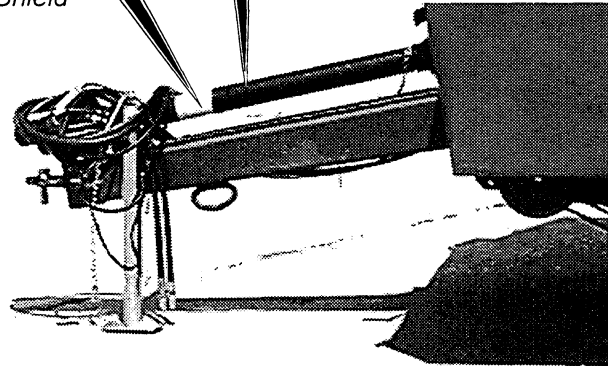
SAFETY PRECAUTIONS



Installed on Outer Shield

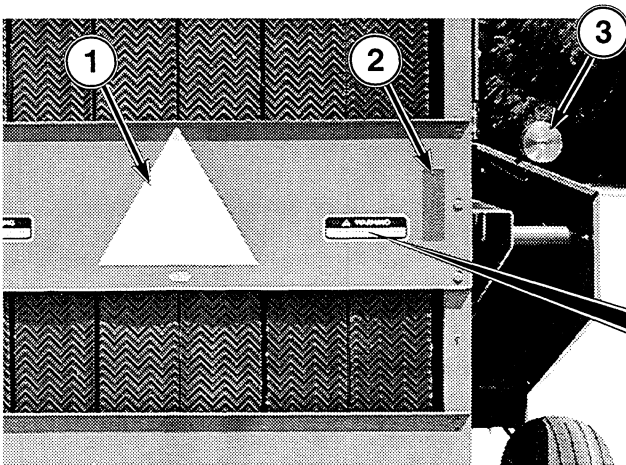


Installed on Inner Shield



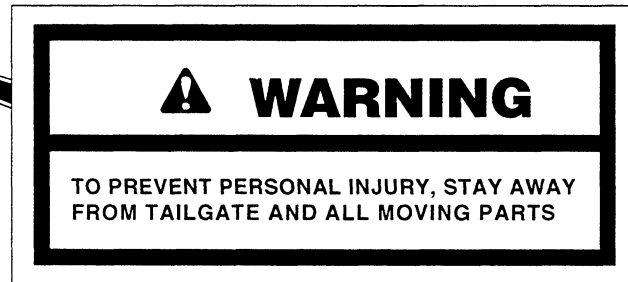
55RB-87112-6

BALER IMPLEMENT DRIVE LINE (IDL)



55RB-87108-8

REAR OF BALER



1. Slow Moving Vehicle Emblem
2. Red Reflectors (2)
3. Warning Lights (available as Extra Equipment)

Buy Now



Our support email:

ebooklibonline@outlook.com