

7210-7220 Tractor

Operators Manual

Rac 9-24682

Reprinted





THIS SAFETY ALERT SYMBOL INDICATES IMPORTANT SAFETY MESSAGES IN THIS MANUAL. WHEN YOU SEE THIS SYMBOL, CAREFULLY READ THE MESSAGE THAT FOLLOWS AND BE ALERT TO THE POSSIBILITY OF PERSONAL INJURY OR DEATH.

M171B

IMPORTANT

If This Machine Is Used By An Employee Or Is Loaned Or Rented, Make Certain That The Operator(s), Prior To Operating:

1. Is Instructed In Safe And Proper Use.
2. Reviews And Understands The Manual(s) Pertaining To The Machine.

CASE TECHNICAL MANUALS

Manuals are available from your Dealer for the operation, service and repair of your machine. For prompt convenient service, contact your Dealer for assistance in obtaining the manuals for your machine.

Your Dealer can expedite your order for operators manuals, parts catalogs, service manuals and maintenance records.

Always give the Machine Name, Model and P.I.N. (product identification number) or S.N. (serial number) or your machine so your Dealer can provide the correct manuals for your machine.

CALIFORNIA

Proposition 65 Warning

Diesel engine exhaust and some of its constituents are known to the State of California to cause cancer, birth defects, and other reproductive harm.

NOTE: Case Corporation reserves the right to make improvements in design or changes in specifications at any time without incurring any obligation to install them on units previously sold.

TO THE OWNER

TO THE OWNER

Read this manual before you start the engine or operate your tractor. Refer to the Detail Index at the end of this manual for locating specific items about your machine. If you need more information, see your dealer.

Your dealer can give you assistance with Case Corporation approved service parts. Your dealer has technicians with special training that know the best methods of repair and maintenance for your tractor.

Call your dealer if you need any assistance or information.

7210 Tractor with Mechanical Front Drive



RP95J105

TRIM THIS EDGE

NOTE: When you are in the tractor seat looking forward, the right and left side of the tractor are the same as your right hand and left hand.

TO THE OWNER

7220 Tractor with Mechanical Front Drive



TRIM THIS EDGE

Manual Storage Compartment



Keep the operators manual in the storage compartment provided on your tractor. The operators manual must be available for use by all operators.

GENERAL TABLE OF CONTENTS

SAFETY/DECALS	6
INSTRUMENTS/CONTROLS	15
OPERATING INSTRUCTIONS	50
FIELD OPERATION	92
TIRES/WHEELS/SPACING/BALLAST	148
LUBRICATION/FILTERS/FLUIDS	201
MAINTENANCE/ADJUSTMENTS	244
ELECTRICAL SYSTEM	260
SPECIFICATIONS	274
Detail Index	285



TRIM THIS EDGE

IDENTIFICATION NUMBERS _____

PRODUCT IDENTIFICATION AND SERIAL NUMBERS

Write your machine Model Number, Product Identification Number (P.I.N.), and Serial Numbers of major components on the lines provided. If needed, give these numbers to your dealer when you need parts or information for your machine.

1. TRACTOR MODEL NUMBER _____

2. PRODUCT IDENTIFICATION NUMBER *JJA _____ *

3. ENGINE SERIAL NUMBER _____

4. TRANSMISSION SERIAL NUMBER _____

5. CAB SERIAL NUMBER _____

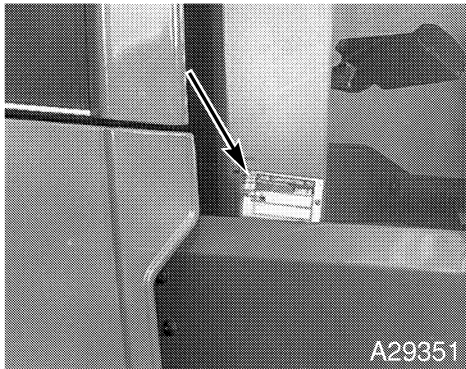
6. MFD AXLE SERIAL NUMBER _____

TRIM THIS EDGE

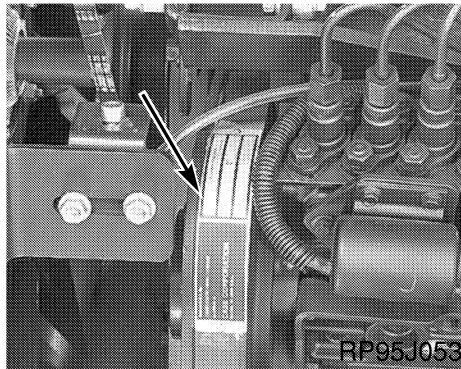
IDENTIFICATION NUMBERS _____

Identification Number Locations

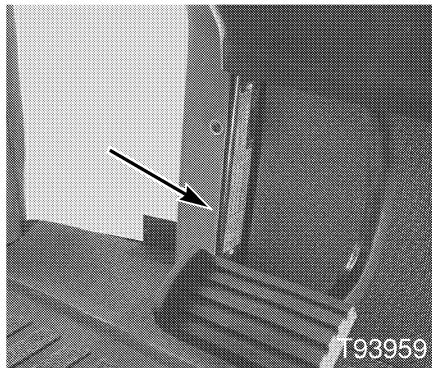
Tractor Model and Product Identification Number



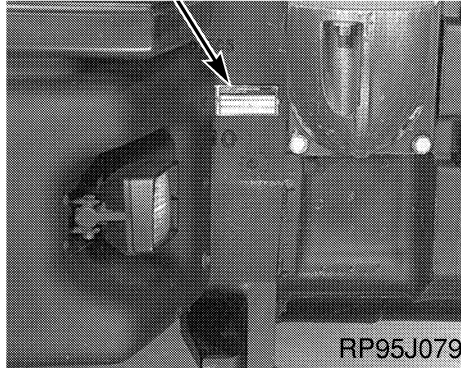
Engine Serial Number



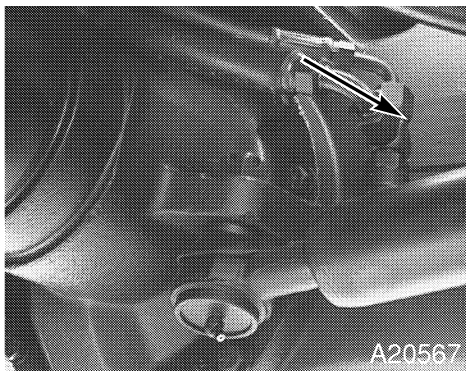
Cab Serial Number



Transmission Serial Number



MFD Axle Serial Number



TRIM THIS EDGE

Buy Now



Our support email:

ebooklibonline@outlook.com