

**7230-7240-7250**  
**Tractor**  
Operators Manual

Rac 9-24692

Reprinted

**CASE III**



*THIS SAFETY ALERT SYMBOL INDICATES IMPORTANT SAFETY MESSAGES IN THIS MANUAL. WHEN YOU SEE THIS SYMBOL, CAREFULLY READ THE MESSAGE THAT FOLLOWS AND BE ALERT TO THE POSSIBILITY OF PERSONAL INJURY OR DEATH.*

M171B

## IMPORTANT

If This Machine Is Used By An Employee Or Is Loaned Or Rented, Make Certain That The Operator(s), Prior To Operating:

1. Is Instructed In Safe And Proper Use.
2. Reviews And Understands The Manual(s) Pertaining To The Machine.

## CASE TECHNICAL MANUALS

Manuals are available from your Dealer for the operation, service and repair of your machine. For prompt convenient service, contact your Dealer for assistance in obtaining the manuals for your machine.

Your Dealer can expedite your order for operators manuals, parts catalogs, service manuals and maintenance records.

Always give the Machine Name, Model and P.I.N. (product identification number) or S.N. (serial number) or your machine so your Dealer can provide the correct manuals for your machine.

### CALIFORNIA

#### Proposition 65 Warning

Diesel engine exhaust and some of its constituents are known to the State of California to cause cancer, birth defects, and other reproductive harm.

**NOTE:** Case Corporation reserves the right to make improvements in design or changes in specifications at any time without incurring any obligation to install them on units previously sold.

## TO THE OWNER

Read this manual before you start the engine or operate your tractor. Refer to the Detail Index at the end of this manual for locating specific items about your machine. If you need more information, see your dealer.

Your dealer can give you assistance with Case Corporation approved service parts. Your dealer has technicians with special training that know the best methods of repair and maintenance for your tractor.

Call your dealer if you need any assistance or information.

### 7230 Tractor with Mechanical Front Drive



TRIM THIS EDGE

**NOTE:** When you are in the tractor seat looking forward, the right hand and left hand of the tractor are the same as your right hand and left hand.

## 7240 Tractor with Mechanical Front Drive



TRIM THIS EDGE

## 7250 Tractor with Mechanical Front Drive



# GENERAL TABLE OF CONTENTS

SAFETY/DECALS .....	6
INSTRUMENTS/CONTROLS .....	15
OPERATING INSTRUCTIONS .....	50
FIELD OPERATION .....	92
TIRES/WHEELS/SPACING/BALLAST .....	152
LUBRICATION/FILTERS/FLUIDS .....	205
MAINTENANCE/ADJUSTMENTS .....	248
ELECTRICAL SYSTEM .....	264
SPECIFICATIONS .....	278
DETAIL INDEX .....	290



TRIM THIS EDGE

IDENTIFICATION NUMBERS \_\_\_\_\_

## PRODUCT IDENTIFICATION AND SERIAL NUMBERS

Write your machine Model Number, Product Identification Number (P.I.N.), and Serial Numbers of major components on the lines provided. If needed, give these numbers to your dealer when you need parts or information for your machine.

1. TRACTOR MODEL NUMBER \_\_\_\_\_

2. PRODUCT IDENTIFICATION NUMBER \*JJA \_\_\_\_\_ \*

3. ENGINE SERIAL NUMBER \_\_\_\_\_

4. TRANSMISSION SERIAL NUMBER \_\_\_\_\_

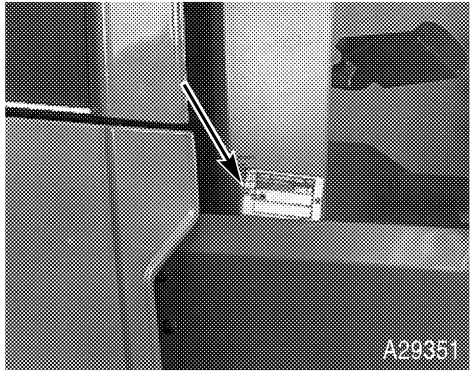
5. CAB SERIAL NUMBER \_\_\_\_\_

6. MFD AXLE SERIAL NUMBER \_\_\_\_\_

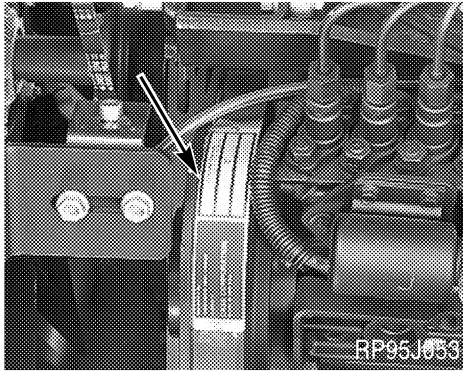
TRIM THIS EDGE

## Identification Number Locations

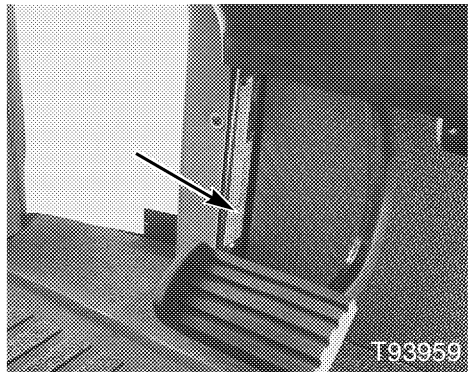
**Tractor Model and Product Identification Number**



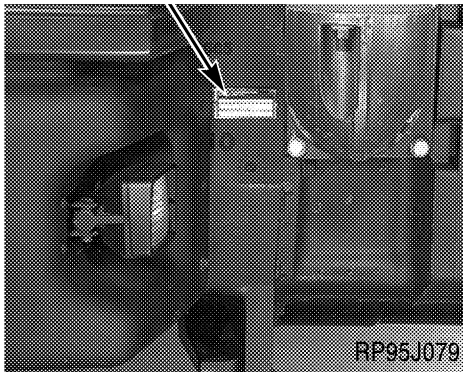
**Engine Serial Number**



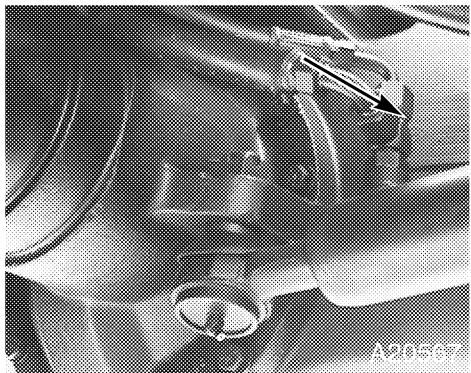
**Cab Serial Number**



**Transmission Serial Number**



**MFD Axle Serial Number**



TRIM THIS EDGE



## **SAFETY**

Understand that your safety and the safety of other persons is measured by how you service and operate this machine. Know the positions and operations of all controls before you try to operate this machine. **MAKE SURE YOU CHECK ALL CONTROLS IN A SAFE AREA BEFORE STARTING YOUR WORK.**

READ THIS MANUAL COMPLETELY and make sure you understand the controls. All equipment has a limit. Make sure you understand the speed, brakes, steering, stability and load characteristics of this machine before you start to operate this machine.

The safety information given in this manual does not replace safety codes, insurance needs, federal, state and local laws. Make sure your machine has the correct equipment needed by the local laws and regulations.

The Case Corporation is continuing to work for your safety: by making tractors with better protection and by giving these rules for safe operation.

TRIM THIS EDGE



*THIS SAFETY ALERT SYMBOL INDICATES IMPORTANT SAFETY MESSAGES IN THIS MANUAL. WHEN YOU SEE THIS SYMBOL, CAREFULLY READ THE MESSAGE THAT FOLLOWS AND BE ALERT TO THE POSSIBILITY OF PERSONAL INJURY OR DEATH.*

M171B

 **Safety Rules** 

- Before starting the engine, be sure all operating controls are in neutral or park lock position. This will eliminate accidental movement of the machine or start up of power driven equipment. R106E
- Operate controls only when seated in the operators seat. R137A
- Securely fasten your seat belt. Your tractor is equipped with a ROPS cab or frame for your protection. The seat belt can help insure your safety if it is used and maintained. Never wear a seat belt loosely or with slack in the belt system. Never wear the belt in a twisted condition or pinched between the seat structural members. R271A
- A frequent cause of personal injury or death is persons falling off and being run over. Do not permit others to ride. Only one person - the operator - should be on the machine when it is in operation. R115B
- Before leaving the tractor, stop the engine, put all controls in NEUTRAL and put the transmission control lever in PARK position. R268A
- Stay off slopes too steep for safe operation. Shift down before you start up or down a hill with a heavy load. Avoid "free wheeling". R123A
- Do not drive on roads, or at high speed anywhere, with the differential lock engaged. Difficult steering will occur, and can result in an accident. In field operation, use the differential lock for traction improvement, but release for turning at row ends. R116A
- Travel speed should be such that complete control and machine stability is maintained at all times. Where possible, avoid operating near ditches, embankments and holes. Reduce speed when turning, crossing slopes, and on rough, slick, or muddy surfaces. R109B
- Collision of high speed road traffic and slow moving machines can cause personal injury or death. On roads, use flasher/lights according to local laws. Keep SMV emblem visible. Pull over to let faster traffic pass. Slow down and signal before turning off. R110E
- Brake pedals must be locked together for road travel. This will insure uniform brake application and maximum stopping ability. R112A
- Make sure that the weight of a trailed vehicle that is not equipped with brakes, NEVER EXCEEDS the weight of the machine that is towing the vehicle. Stopping distance increases with increasing speed as the weight of the towed load increases, especially on hills and slopes. R114B



TRIM THIS EDGE

## SAFETY/DECALS

---

TRIM THIS EDGE

- Extra weight and bad traction conditions such as mud or ice increase your stopping distance. Remember that liquid in the tires, weights on the machine or wheels, tanks filled with fertilizer, herbicides or insecticides - all these add weight and increase the distance you need in which to stop. R113B
- Rear upset can result if pulling from wrong location on tractor. Hitch only to the drawbar. Use 3 point hitch only with the implements designed for its use - NOT as a drawbar. R119A
- PTO driven machinery can cause serious injury. Before working on or near the PTO shaft, or servicing or clearing the driven machine, put the PTO switch or lever in the DISENGAGE position and STOP the engine. R154A
- Whenever a PTO driven machine is in operation, the PTO guard must be in place for most operations to prevent injury to the operator or bystanders. Where attachments, such as pumps, are installed on the PTO shaft (especially if the tractor PTO guard is moved upward or removed), extended shielding equivalent to the PTO guard must be installed with the attachment. Install the PTO guard to its original position immediately when the attachment is removed. R273A
- When doing stationary PTO work and dismounting from the tractor with the PTO running, keep clear of all moving parts as they are a potential safety hazard. R127A
- Never operate the engine in a closed building. Proper ventilation is required under all circumstances. R142A
- Never refuel the machine when the engine is hot or running. Never smoke while refueling. R139C
- Check and service cooling system according to maintenance instructions. Hot coolant can spray out if radiator cap is removed while system is hot. To remove radiator cap, let system cool, turn to first notch, then wait until all pressure is released. Scalding can result from fast removal of radiator cap. R305A
- Hydraulic oil or diesel fuel leaking under pressure can penetrate the skin and cause infection or other injury. To Prevent Personal Injury: Relieve all pressure, before disconnecting fluid lines. Before applying pressure, make sure all connections are tight and components are in good condition. Never use your hand to check for suspected leaks under pressure. Use a piece of cardboard or wood for this purpose. If injured by leaking fluid, see your doctor immediately. R149B
- Battery explosion and/or damage to electrical components can result from improper connection of booster batteries or charger. Connect positive to positive and negative to negative. Externally, battery acid can cause burns and blindness, and taken internally it is poison. R146B

## SAFETY/DECALS

---

- It is good practice to carry a fire extinguisher on the machine. Be sure that the extinguisher is properly maintained and be familiar with its proper use. R102B
  
- This tractor is equipped with a spring applied mechanical front wheel drive (MFD) clutch and a front axle limited slip differential. Even with the MFD engaging switch in the OFF position, the front axle clutch can propel both front wheels if any of the following conditions occur:
  1. The engine is turned off.
  2. The engine is stopped when the rear wheels are still coasting.
  3. Any interruption in the clutch operating hydraulic system flow or pressure or in the electrical controls for clutch operation.
  4. Both brakes are applied.

For these reasons, the following service procedures must be followed.

Before rotating the rear wheels of a MFD tractor (if you are using engine power with the rear wheels supported off the ground), one of the following procedures must be done to prevent an accidental tractor movement.

1. Jack up and support BOTH front wheels completely off the ground.

OR

2. Disconnect the front wheel drive shaft.

Doing one of these two procedures will insure that engagement of the MFD clutch will not result in tractor movement. R292B

- Fluids such as Gasoline, Kerosene, Diesel Fuel, Hydraulic Oil, etc. contain chemicals that can be dangerous to your health and can cause cancer and/or birth defects. Contact either internally or externally can cause infection or other injury. If any internal or external contact occur, see your local Poison Control Center or doctor IMMEDIATELY. R412

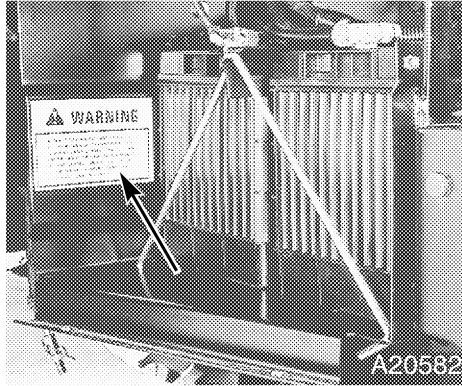
TRIM THIS EDGE

## DECALS

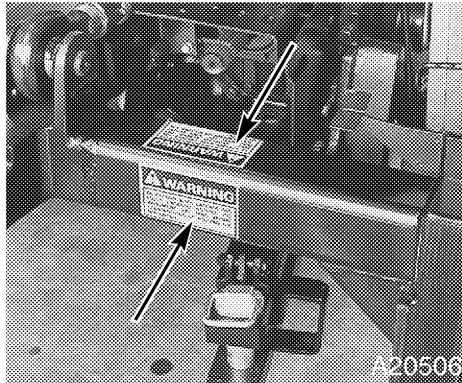
**IMPORTANT:** Install new decals if the old decals are destroyed, lost, painted over or can not be read. When parts are replaced that have decals, make sure you install a new decal with each new part.

**NOTE:** New decals are available from your dealer.

TRIM THIS EDGE



321-6714



321-3339

***Buy Now***



Our support email:

[ebooklibonline@outlook.com](mailto:ebooklibonline@outlook.com)