

8850 HP Windrower Tractor

Operators Manual

Rac 9-25415

Reprinted

CASE III



THIS SAFETY ALERT SYMBOL INDICATES IMPORTANT SAFETY MESSAGES IN THIS MANUAL. WHEN YOU SEE THIS SYMBOL, CAREFULLY READ THE MESSAGE THAT FOLLOWS AND BE ALERT TO THE POSSIBILITY OF PERSONAL INJURY OR DEATH.

M171B

IMPORTANT

If This Machine Is Used By An Employee Or Is Loaned Or Rented, Make Certain That The Operator(s), Prior To Operating:

1. Is Instructed In Safe And Proper Use.
2. Reviews And Understands The Manual(s) Pertaining To The Machine.



8850 HP Windrower Tractor



SPR-93082-27

TO OUR CUSTOMER

We appreciate your confidence in CASE IH Farm Equipment and thank you for your patronage. In preparing this manual, we hope we have furnished you with a valuable tool for operating and maintaining this fine machine. Use this manual as your guide. Practicing the instructions given here will result in many years of dependable service from your machine.

Your Dealer can give you assistance with CASE IH parts and specially trained personnel to assist you in repair and maintenance.

Call your Dealer if you need any assistance or information.

**CALIFORNIA
Proposition 65 Warning**

Diesel engine exhaust and some of its constituents are known to the State of California to cause cancer, birth defects, and other reproductive harm.

TABLE OF CONTENTS

SPECIFICATIONS	IV
SERIAL NUMBERS	V
CHECKLISTS	VI
SAFETY PRECAUTIONS	1
GENERAL INFORMATION	7
DESCRIPTION	9
SERVICING	21
PREPARATION	41
OPERATION	42
MAINTENANCE	56
TROUBLESHOOTING	84
STORAGE	86
EXTRA EQUIPMENT	87
ALPHABETICAL INDEX	88

SPECIFICATIONS

SPECIFICATIONS

(Specifications and design are subject to change without notice and without liability therefore.)

MODEL 8850 HP Windrower Tractor

DIMENSIONS AND WEIGHTS

Length, overall with header 245.3 IN (6232 mm)
wheel base 132 IN (3353 mm)

Height

top of cab 121 IN (3074 mm)
clearance under walking beam 29 IN (737 mm)
clearance under frame 33.5 IN (851 mm)

Width

outside of hubs 119.6 IN (3038 mm)
outside of tires 148.5 IN (3772 mm)

Tread width, drive tires 127 IN (3226 mm)

Tread width, tailwheels

minimum 84.3 IN (2140 mm)
maximum 110.2 IN (2800 mm)

Weight (approximate)

without header 7600 LB (3447 kg)

TIRES

Drive wheels 21.5L x 16.1, turf or bar tread
wheel nuts 5/8-18
torque 200 LB-FT (271 N-m)

Rear caster wheels 9.5L-15, 4-ply implement rib
wheel bolts 9/16-18
torque 120 LB-FT (165 N-m)

Tire pressure, all tires 22 psi (152 kPa)

ENGINE

Model Case, 6T-590

Horsepower 152 @ 2500 rpm (r/min)

High idle 2700 rpm (r/min)

Displacement 359 CU IN (5.9 L)

Cooling system capacity 32 U.S. quarts (30.3 L)

Cooling fan diameter 23 IN (584 mm)

Fuel ASTM No. 2 Diesel

Fuel tank capacity 50 U.S. gallons (189.3 L)

ELECTRICAL SYSTEM

System voltage 12 volts

Grounding negative

Batteries

quantity 2
capacity, each 12 volt, 500 amp
minimum cranking capacity @ 0°F

type SAE J537, Group Size 24 or 27, top/side post

Alternator

manufacturer Robert Bosch

output 65 amperes

GROUND DRIVE SYSTEM

Final drive roller chain

primary reduction No. 50

final reduction No. 80

Tandem pump Vickers Model 19, piston

Motors Vickers Model MVE19, variable displacement

Speed, approximate

FIELD range 0 to 10 mph (0 to 16 km/h)

ROAD range 0 to 15 mph (0 to 24 km/h)

HEADER DRIVE SYSTEM

Pump Vickers Model PVH98, piston

Motors Vickers Model MFE19, fixed displacement

HYDRAULIC SYSTEM

Ground drive system

relief pressure 5000 psi (34 475 kPa)

Header drive system

maximum pressure 4000 psi (27 580 kPa)

Header lift system

relief pressure 2000 psi (13 790 kPa)

HEADER FLOTATION SYSTEM

Type hydraulic with accumulator,
adjustable from cab

CAB

Cab glass tinted, 63 sq ft (5.9 m²)

Steering column 5 position tilt

Steering column gauges engine coolant temperature,
engine oil pressure, digital
speedometer / tachometer

Instrument panel gauges voltmeter, fuel level,
flotation pressure, and hourmeter

Instrument cluster warning lamps engine oil pressure,
hydraulic oil level, charge oil pressure,
coolant temperature, with audible

alarm for each function

Operator's seat 5-way adjustable, fore and
aft isolator, air suspension

AIR CONDITIONING

System size 22,000 BTU/hr

Refrigerant HFC 134a

Quantity 4.6 LBS (2 kg)

Compressor Sanden 507H
displacement 9.5 CU IN (154.9 cc)

ACCESSORIES

Lights 4 lights front, square halogen
2 lights rear, square halogen

flashers on header and tractor,
tail light, turn signals

Rear view mirrors, right and left deluxe

Controls Shape-coded handles

LUBRICATION

Grease Fittings

lubricant CASE IH 251 HEP Lithium Grease

Wheel Bearings

lubricant CASE IH 251 HEP Lithium Grease

Engine Oil

quantity with filter change 16 U.S. quarts (15 L)

type of fluid Case IH No. 1 Engine Oil,
SAE 15W 40, API CE, CDII/CF-4

Hydraulic System

quantity

total system 26 U.S. gallons (98.4 L)

reservoir 20 U.S. gallons (76 L)

type of fluid Engine Oil, SAE 15W 40

type of fluid, alternate Case IH Hy-Tran Plus

*NOTE: Hy-Tran Plus can be added to factory-installed
fluid, but to get the full benefit of the qualities of Hy-
Tran Plus a complete oil replacement is required.*

Chaincases, Final Drive

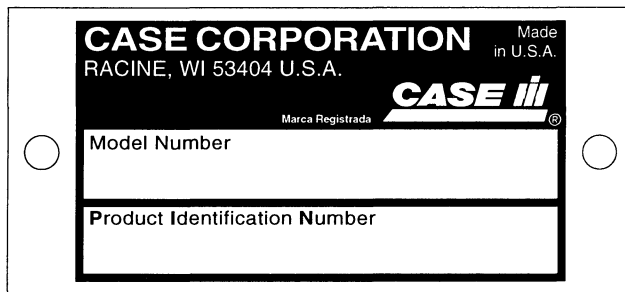
quantity, each 4 quarts (3.8 L)

lubricant Case IH 135H EP Gear Lube 85W 140

SERIAL NUMBERS

When parts or assistance are needed, or when writing to your Authorized Case IH Dealer, always give this information:

1. Model Number of the Machine
2. Product Identification Number



MODEL NUMBER AND PRODUCT IDENTIFICATION NUMBER PLATE

**FOR LOCATION OF THE
PRODUCT IDENTIFICATION NUMBER PLATE
ON THIS MACHINE, SEE "GENERAL INFORMATION"
SECTION IN THIS MANUAL.**

Write the serial numbers of your machine on the lines below.

MODEL NUMBER _____

PRODUCT IDENTIFICATION NUMBER _____

CHECKLISTS

CHECKLISTS



Use good safety practices when working around this machine.

DAILY

- ___ Do the daily lubrication and service items and those items whose calendar time is due. See the "Servicing" section for lubrication and service points.
- ___ Observe pulleys and components for looseness and alignment.
- ___ Look for loose or missing bolts or parts.
- ___ Check the hydraulic system connections for leaks.
- ___ If the machine is to be transported on a road or highway at night or during the day, accessory lights, warning devices and slow moving vehicle emblem must be used for adequate warning to operators of other vehicles. Make sure all warning lights are operational. Observe local governmental regulations concerning movement of slow and overwidth vehicle.

BEFORE EACH SEASON

- ___ Do all the items on the "Daily" checklist
- ___ Review "Safety Precautions".
- ___ Remove accumulated dirt, trash, and crop material from machine.
- ___ Lubricate all lubrication points as required. Visually inspect all lubrication points to make sure lubrication is being received. See the "Servicing" section for service points.
- ___ Check the level of the coolant in the coolant recovery tank.
- ___ Check the radiator for dirt and trash. Clean as required.
- ___ Check and clean precleaner as required. Replace primary and secondary air cleaner elements.
- ___ Replace hydraulic reservoir breather air filter.
- ___ With machine operating in a stationary position, observe the operation of moving parts. Watch for any signs of faulty operation, overheated bearings, and listen for any unusual sounds.
- ___ Make sure the proper operating adjustments have been made for your crop.
- ___ See "Extra Equipment" in this section for extra equipment that will help you do a better job.

SAFETY PRECAUTIONS

Understand that your safety and the safety of other persons is measured by how you service and operate this machine. Know the positions and operations of all controls before you try to operate this machine. **MAKE SURE YOU CHECK ALL CONTROLS IN A SAFE AREA BEFORE STARTING YOUR WORK.**

READ THIS MANUAL COMPLETELY and make sure you understand the controls. All equipment has a limit. Make sure you understand the speed, brakes, steering, stability, and load characteristics of this machine before you start to operate the machine.

The safety information given in this manual does not replace safety codes, insurance needs, state and local laws. Make sure your machine has the correct equipment needed by the local laws and regulations.



THIS SAFETY ALERT SYMBOL INDICATES IMPORTANT SAFETY MESSAGES IN THIS MANUAL. WHEN YOU SEE THIS SYMBOL, CAREFULLY READ THE MESSAGE THAT FOLLOWS AND BE ALERT TO THE POSSIBILITY OF PERSONAL INJURY OR DEATH.

Read and understand all operating instructions and precautions before attempting to operate or service the machine.

Before doing any maintenance or service work on the tractor or the header, you must:

- Put all controls in **NEUTRAL**.
- Apply the parking brake.
- Center and lock the steering wheel.
- When working on the tractor, lower the header to the floor.
- When working on the header, raise the header all the way.
- Stop the engine and take the key with you.
- **Look and Listen!** Make sure all moving parts have stopped.
- If the header is raised, install the cylinder safety stops on both header float cylinders.

When the header is raised for service or maintenance work, cylinder safety stops must be installed on both header float cylinders to prevent lowering of the header.

Emphasize the importance of safety when working around and operating the machine.

Caution others, especially children, about climbing on the machine or being too close while machine is operating.

Never carry riders.

Make sure all persons are away from the machine before operating the machine.

Never operate the machine at high speeds in crowded places.

Do not ride on the machine at any time.

SAFETY PRECAUTIONS

Always remain seated and have seat belt fastened while operating machine.

Any time the engine is running and the parking brake is disengaged, the machine will turn if the steering wheel is moved, even though the travel control lever is in neutral.

Never suddenly reverse wheels to stop or backup.

Never stand behind tractor while the header is running.

Never stand near the header while the machine is operating.

Always keep hands, feet and clothing away from moving parts.

Always lower the header to the ground when parking.

Always apply the parking brake when parking, and center and lock the steering wheel.

Always park crosswise to the slope when parking on a hill.

Do not attempt to remove foreign objects from rotary mower conditioner while the machine is running. Allow the rotating discs to stop completely before leaving the tractor seat. Listen for evidence of rotation.

Entanglement in rotating drive shafts can cause serious injury or death. Do not operate the machine with drive shafts shields open or removed.

Rocks and other debris can be thrown from the machine during operation possibly resulting in injury. Be careful when operating along the side of a road or buildings.

Tilt header back in fields where stones and foreign objects are present to raise the cutting knives and minimize debris being thrown by rotating knives.

Always have shields, guards and curtains in position before operating the machine.

Always keep the curtains in good condition. Do not remove curtains from the machine.

Regularly check that disc and knife bolts are tight, especially after striking foreign objects.

Never check drive belts while machine is running.

Never remove the cap from a hot radiator; escaping steam and hot fluids can cause personal injury.

After lubricating, servicing or adjusting the machine, make sure all tools and equipment have been removed before operating the machine.

Hydraulic fluid escaping under pressure can have sufficient force to penetrate the skin, causing serious injury. Be sure to relieve all pressure from hydraulic lines before disconnecting them. Before applying pressure to the system, make sure all connections are tight and that hoses and lines have not been damaged.

Hydraulic fluid escaping from a very small hole can be almost invisible. Always use a piece of cardboard or wood, rather than hands, to search for suspected leaks. If injured by escaping hydraulic fluid, see a doctor immediately.

Always travel with the header as low as possible.

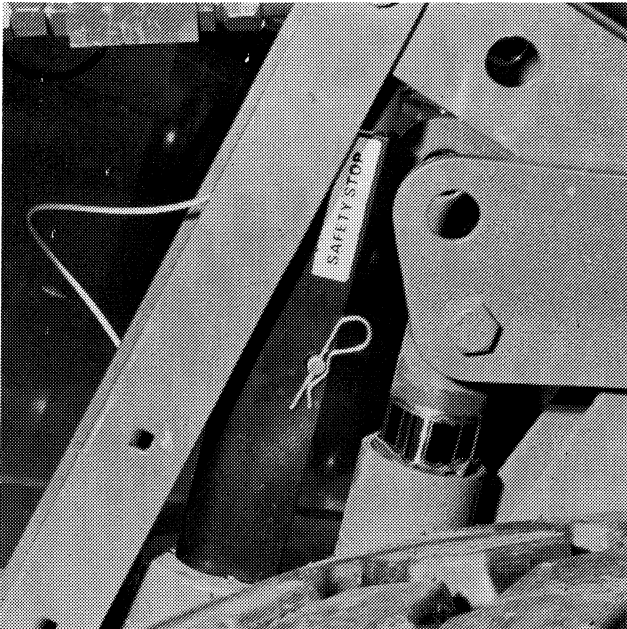
Securely fasten your seat belt. The seat belt can help insure your safety if used and maintained. Never wear a seat belt loosely or with slack in the belt system. Never wear the seat belt in a twisted condition or pinched between the seat structural members.

BE AWARE of the transport width and be careful when transporting the machine on narrow roads and across narrow bridges. See Specifications for overall dimensions.

Always use ample safety warnings and adequate lights when transporting the machine on public roads. Be sure the SMV emblem is visible. Check with your local law enforcement agencies for specific requirements.

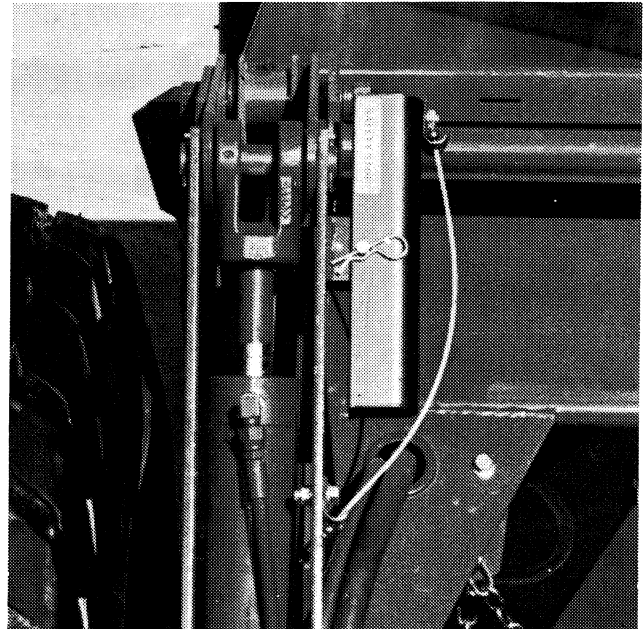
See the Operation Section for information for safe transporting of the machine.

Always install header safety stops at both ends of the header before working on or under the header. See the following photos.



SPR-93080-4

Header Safety Stop in Safety Position



SPR-93084-15

Header Safety Stop in Storage Position

SAFETY DECALS



This is the safety alert symbol. The safety alert symbol will direct your attention to information that involves your safety.

The words **DANGER**, **WARNING** or **CAUTION** are used with the safety alert symbol on the safety decals on the machine. For your personal safety, and the safety of those nearby, learn to recognize these safety alerts, and follow the recommended precautions and safe operating practices.



DANGER: Indicates an imminently hazardous situation that, if not avoided, will result in death or serious injury.



WARNING: Identifies a potentially hazardous situation that, if not avoided, could result in death or serious injury.



CAUTION: Identifies a potentially hazardous situation that, if not avoided, may result in minor or moderate injury.

Install new safety decals if the old safety decals are destroyed, lost, painted over, or cannot be read. When parts that have decals are replaced, make sure you install a new decal with each new part. New safety decals are available from your dealer.

Buy Now



Our support email:

ebooklibonline@outlook.com