

9310 - 9330 Tractor

Operators Manual

9-26030

Reprinted

CASE III






THIS SAFETY ALERT SYMBOL INDICATES IMPORTANT SAFETY MESSAGES IN THIS MANUAL. WHEN YOU SEE THIS SYMBOL, CAREFULLY READ THE MESSAGE THAT FOLLOWS AND BE ALERT TO THE POSSIBILITY OF PERSONAL INJURY OR DEATH.

M171B

If Safety Decals on this machine use the words **Danger, Warning or Caution**, which are defined as follows:

- **DANGER:** Indicates an immediate hazardous situation which if not avoided, will result in death or serious injury. The color associated with Danger is RED.
- **WARNING:** Indicates an potentially hazardous situation which if not avoided, will result in serious injury. The color associated with Warning is ORANGE.
- **CAUTION:** Indicates an potentially hazardous situation which if not avoided, may result in minor or moderate injury. It may also be used to alert against unsafe practices. The color associated with Caution is YELLOW.

If Safety Decals on this machine are ISO two panel Pictorial, decals are defined as follows:

- The first panel indicates the nature of the hazard.
- The second panel indicates the appropriate avoidance of the hazard.
- Background color is YELLOW.
- Prohibition symbols such as   and  if used, are RED.



WARNING

IMPROPER OPERATION OF THIS MACHINE CAN CAUSE INJURY OR DEATH. BEFORE USING THIS MACHINE, MAKE CERTAIN THAT EVERY OPERATOR:

- Is instructed in safe and proper use of the machine.
- Reads and understands the Manual(s) pertaining to the machine.
- Reads and understands ALL Safety Decals on the machine.
- Clears the area of other persons.
- Learns and practices safe use of machine controls in a safe, clear area before operating this machine on a job site.

It is your responsibility to observe pertinent laws and regulations and follow Case Corporation instructions on machine operation and maintenance.

TO THE OWNER

TO THE OWNER

This manual contains important information about the safe operation, adjustment and maintenance of your Case IH tractor. Refer to the Detail Index at the end of this manual for locating specific items about the tractor.

DO NOT operate or permit anyone to operate or service this tractor until you or other persons have read this manual. Use only trained operators who have demonstrated the ability to operate and service this tractor correctly and safely.

This tractor, with standard equipment and authorized attachments, is intended to be used for normal agricultural PTO, planting and tillage operations.

DO NOT use this tractor for any application or purpose other than those described in this manual. Consult an authorized dealer or the Case Corporation on changes, additions or modifications that can be required for this machine to comply with various country regulations and safety requirements. Unauthorized modifications can cause serious injury or death. Anyone making such unauthorized modifications is responsible for the consequences.

This Operators Manual is to be stored in the manual storage compartment provided on this tractor. Make sure this manual is complete and in good condition. Contact your dealer to obtain additional manuals or for any additional information or assistance about your tractor. Your dealer has Case Corporation approved service parts and has technicians with special training that know the best methods of repair and maintenance for your tractor.

Model 9310 Tractor



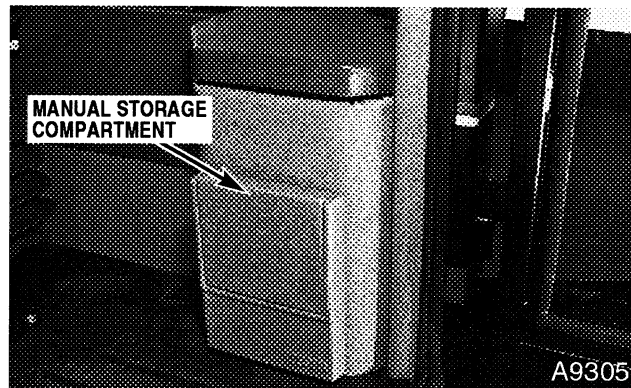
NOTE: When you are in the tractor seat looking forward, the right hand and left hand of the tractor are the same as your right and left hand.

TO THE OWNER

Model 9330 Tractor



Manual Storage Compartment



Keep the operators manual in the storage compartment provided in your tractor cab. The operators manual must be available for use by all operators.

GENERAL TABLE OF CONTENTS

Safety/Decals	6
Instruments/Controls	15
Operating Instructions	43
Field Operation.....	78
Tires/Wheels/Spacing/Ballast.....	114
Lubrication/Filters/Fluids	143
Maintenance/Adjustments.....	190
Electrical System.....	201
Specifications	216
Detail Index	221

TRIM THIS EDGE

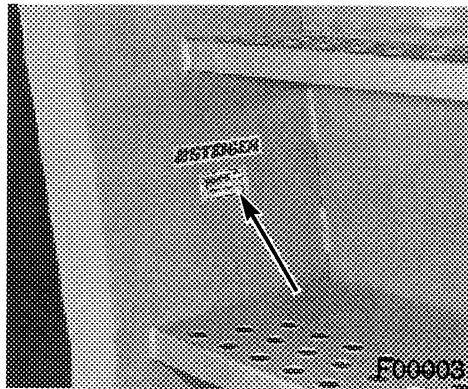
IDENTIFICATION NUMBERS _____

PRODUCT IDENTIFICATION AND SERIAL NUMBERS

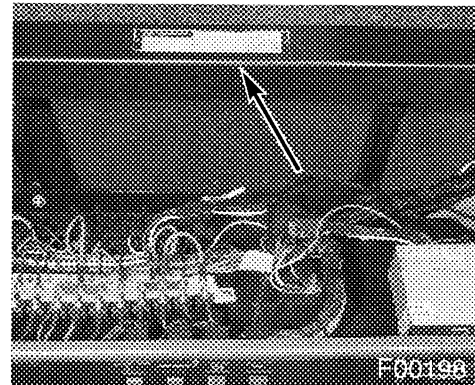
Write your machine Model Number, Product Identification Number (P.I.N.), and Serial Numbers of major components on the lines provided. If needed, give these numbers to your dealer when you need parts or information for your machine.

1. TRACTOR MODEL NUMBER _____
2. PRODUCT IDENTIFICATION NUMBER * JEE _____ *
3. ENGINE SERIAL NUMBER _____
4. TRANSMISSION SERIAL NUMBER _____
5. CAB OR ROPS SERIAL NUMBER _____
6. AXLE SERIAL NUMBER - FRONT _____
7. AXLE SERIAL NUMBER - REAR _____

Identification Number Locations

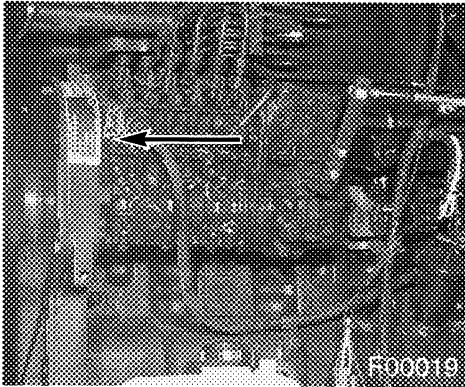


TRACTOR MODEL AND PRODUCT IDENTIFICATION NUMBERS

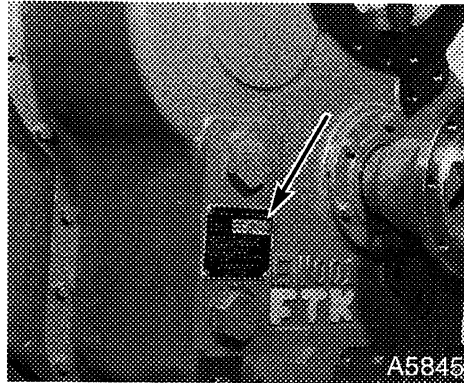


ROPS SERIAL NUMBER

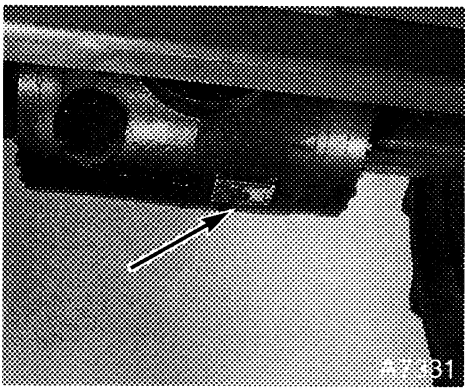
IDENTIFICATION NUMBERS



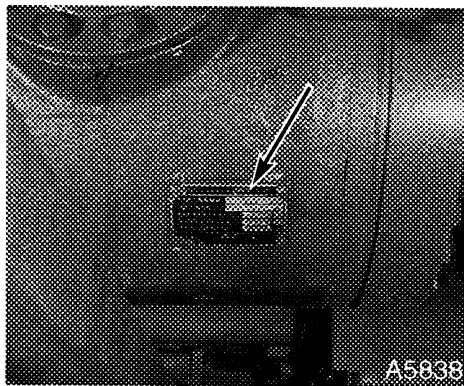
ENGINE SERIAL NUMBER



TRANSMISSION SERIAL NUMBER



**AXLE SERIAL NUMBER ADJUSTABLE BAR
TYPE - FRONT**



**AXLE SERIAL NUMBER ADJUSTABLE BAR
TYPE - REAR**

SAFETY/DECALS

SAFETY

Understand that your safety and the safety of other persons is measured by how you service and operate this machine. Know the positions and operations of all controls before you try to operate. **MAKE SURE YOU CHECK ALL CONTROLS IN A SAFE AREA BEFORE STARTING YOUR WORK.**

READ THIS MANUAL COMPLETELY and make sure you understand the controls. All equipment has a limit. Make sure you understand the speed, brakes, steering, stability and load characteristics of this machine before you start to operate.

The safety information given in this manual does not replace safety codes, insurance needs, federal, state and local laws. Make sure your machine has the correct equipment needed by the local laws and regulations.

Case Corporation is continuing to work for your safety: by making tractors with better protection and by giving these rules for safe operation.



THIS SAFETY ALERT SYMBOL INDICATES IMPORTANT SAFETY MESSAGES IN THIS MANUAL. WHEN YOU SEE THIS SYMBOL, CAREFULLY READ THE MESSAGE THAT FOLLOWS AND BE ALERT TO THE POSSIBILITY OF PERSONAL INJURY OR DEATH.

M171B

Safety Rules

- Before starting the engine, be sure all operating controls are in neutral or park lock position. This will eliminate accidental movement of the machine or start up of power driven equipment. R106E
- Operate controls only when seated in the operators seat. R137A
- Securely fasten your seat belt. Your tractor is equipped with a ROPS cab or frame for your protection. The seat belt can help insure your safety if it is used and maintained. Never wear a seat belt loosely or with slack in the belt system. Never wear the belt in a twisted condition or pinched between the seat structural members. R271A
- A frequent cause of personal injury or death is persons falling off and being run over. Do not permit others to ride. Only one person-the operator- should be on the machine when it is in operation. R115B
- Before leaving the tractor, stop the engine, put all controls in neutral, engage the park brake and remove the key from the key switch. R301A

SAFETY/DECALS

- Stay off slopes too steep for safe operation. Shift down before you start up or down a hill with a heavy load. Avoid “free wheeling”. R123A
- Do not drive on roads, or at high speed anywhere, with the differential lock engaged. Difficult steering will occur, and can result in an accident. In field operation, use the differential lock for traction improvement, but release for turning at row ends. R116A
- Travel speed should be such that complete control and machine stability is maintained at all times. Where possible, avoid operating near ditches, embankments and holes. Reduce speed when turning, crossing slopes, and on rough, slick, or muddy surfaces. R109B
- Collision of high speed road traffic and slow moving machines can cause personal injury or death. On roads, use flasher/lights according to local laws. Keep SMV emblem visible. Pull over to let faster traffic pass. Slow down and signal before turning off. R110E
- Make sure that the weight of a trailed vehicle that is not equipped with brakes, NEVER EXCEEDS the weight of the machine that is towing the vehicle. Stopping distance increases with increasing speed as the weight of the towed load increases, especially on hills and slopes. R114B
- Extra weight and bad traction conditions such as mud or ice increase your stopping distance. Remember that liquid in the tires, weights on the machine or wheels, tanks filled with fertilizer, herbicides or insecticides - all these add weight and increase the distance you need in which to stop. R138B
- PTO driven machinery can cause serious injury. Before working on or near the PTO shaft, or servicing or clearing the driven machine, put the PTO lever in the DISENGAGE position and STOP the engine. R154A
- Whenever a PTO driven machine is in operation, the PTO guard must be in place for most operations to prevent injury to the operator or bystanders. Where attachments, such as pumps, are installed on the PTO shaft (especially if the tractor PTO guard is moved upward or removed), extended shielding equivalent to the PTO guard must be installed with the attachment. Install the PTO guard to its original position immediately when the attachment is removed. R273A
- When doing stationary PTO work and dismounting from the tractor with the PTO running, keep clear of all moving parts as they are a potential safety hazard. R127A
- When doing stationary PTO work, install the front and rear frame articulation lock, to prevent accidental articulation of the tractor. Put the transmission in neutral and engage the park brake. R298A
- Never operate the engine in a closed building. Proper ventilation is required under all circumstances. R142A

Buy Now



Our support email:

ebooklibonline@outlook.com