

Maxxum Tractors
5120, 5130, 5140 and 5150

P.I.N JJF1050700 and after

Operator's Manual

Don 9-27315



Maxxum Tractors

5120, 5130, 5140 and 5150

P.I.N. JJF1050700 and After

Don 9- 27315

TRIM THIS EDGE

TRIM THIS EDGE

RIGHT PAGE



THIS SAFETY ALERT SYMBOL INDICATES IMPORTANT SAFETY MESSAGES IN THIS MANUAL. WHEN YOU SEE THIS SYMBOL, CAREFULLY READ THE MESSAGE THAT FOLLOWS AND BE ALERT TO THE POSSIBILITY OF PERSONAL INJURY OR DEATH.

M171B

Safety Decals on this machine use the words **Danger**, **Warning** or **Caution**, which are defined as follows:

- **DANGER:** Indicates an immediate hazard situation which, if not avoided, will result in death or serious injury. The color associated with Danger is RED.
- **WARNING:** Indicates a potentially hazardous situation which, if not avoided, could result in serious injury. The color associated with Warning is ORANGE.
- **CAUTION:** Indicates a potentially hazardous situation which, if not avoided, may result in minor or moderate injury. It may also be used to alert against unsafe practices. The color associated with Caution is YELLOW.

TRIM THIS EDGE



WARNING

IMPROPER OPERATION OF THIS MACHINE CAN CAUSE INJURY OR DEATH. BEFORE USING THIS MACHINE, MAKE CERTAIN THAT EVERY OPERATOR:

- Is instructed in safe and proper use of the machine.
- Reads and understands the Manual(s) pertaining to the machine.
- Reads and understands ALL Safety Decals on the machine.
- Clear the area of other persons.
- Learns and practices safe use of machine controls in a safe, clear area before operating this machine on a job site.

It is your responsibility to observe pertinent laws and regulations and follow

TRIM THIS EDGE

LEFT PAGE

GENERAL TABLE OF CONTENTS

TO THE OWNER	1
IDENTIFICATION NUMBERS/MACHINE COMPONENTS	4
MACHINE COMPONENTS	6
SAFETY/DECALS	8
SAFETY RULES	8
INTENDED USE	8
GENERAL SAFETY AND ACCIDENT PREVENTION REGULATIONS	9
TRANSPORTING PASSENGERS	10
OPERATION	10
LEAVING THE TRACTOR	10
IMPLEMENTS	11
PTO OPERATION	11
SERVICE	11
BASIC RULE	12
MOUNTING AND DISMOUNTING OF TRACTOR	12
SAFETY DECALS	13
ROLL OVER PROTECTIVE STRUCTURE (ROPS)	18
INSTRUMENTS/CONTROLS	20
STANDARD INSTRUMENT CLUSTER	20
DIGITAL INSTRUMENT CLUSTER	24
OPERATING CONTROLS	28
OPERATORS SEAT	46
OPERATING INSTRUCTIONS	51
BEFORE STARTING THE ENGINE	51
RUN IN PROCEDURE	52
SERVICE INDICATOR LAMPS AND GAUGES	53
SEAT BELT	55
NORMAL STARTING PROCEDURE	56
STOPPING THE ENGINE	58
PARKING THE TRACTOR	60
COLD TEMPERATURE OPERATION	62
TOWING THE TRACTOR	66
HOW TO TRANSPORT THE TRACTOR	67
OPERATING THE TRANSMISSION	68

TRIM THIS EDGE

I

TRIM THIS EDGE

RIGHT PAGE

TRIM THIS EDGE

DIFFERENTIAL LOCK	78
WHEEL SLIP INDICATOR	79
CAB AIR FLOW ARRANGEMENTS	81
MAXIMUM INSIDE CAB PRESSURE	81
MAXIMUM AIR FLOW AND MAXIMUM COOL	82
MAXIMUM HEAT	83
AIR CONDITIONER OPERATION	84
POWER TAKEOFF	85
DRAWBAR	94
COMBINED AUTO HITCH AND DRAWBAR	95
TRACTOR AMBER WARNING LAMPS AND DIRECTION TURN SIGNALS	101
FIELD OPERATION	103
DRAWBAR PREPARATION	103
QUICK ADJUST, HEIGHT ADJUSTABLE, CLEVIS TYPE TRAILER HITCHES	106
THREE POINT HITCH SYSTEM PREPARATION	111
REAR HITCH OPERATION	120
HITCH OPERATING TIPS	128
FRONT HITCH PREPARATION	131
REMOTE HYDRAULICS PREPARATION	135
REMOTE HYDRAULICS OPERATION	139
AUXILIARY POWER CONNECTIONS	143
PROGRAMMING DIGITAL INSTRUMENT CLUSTER	145
FOLDABLE ROPS FRAME	151
TIRES/WHEELS/SPACING/BALLAST	154
TIRE AND WHEEL EQUIPMENT	154
TIRE AND WHEEL SERVICE	161
MFD FRONT WHEEL TREAD POSITIONS	162
REAR WHEEL TREAD POSITIONS	164
DUAL REAR WHEEL TREAD POSITIONS	168
MFD AXLE ADJUSTMENTS	169
REAR WHEEL ADJUSTMENT	177
FRONT WHEEL FENDERS	181
FRONT TO REAR TIRE SIZE COMBINATIONS	183
TRACTOR BALLAST	184
LUBRICATION/FILTERS/FLUIDS	194
HOURMETER	194
HOOD AND SIDE PANELS	195
TOOL BOX	196
GREASE POINTS	199
CAPACITIES	202
ENGINE LUBRICATION	203

II

TRIM THIS EDGE

LEFT PAGE

FUEL SYSTEM	207
COOLING SYSTEM	215
AIR INDUCTION SYSTEM	219
TRANSMISSION LUBRICATION	225
MECHANICAL FRONT DRIVE (MFD) AXLE	228
FRONT PTO LUBRICATION	230
CAB AIR FILTERS	231
MAINTENANCE/ADJUSTMENTS	236
COOLING SYSTEM	236
OPERATORS CAB	238
AUTO HITCH RELEASE CABLE ADJUSTMENT	243
AUTO HITCH LIFT ROD ADJUSTMENT	244
HITCH BOLTS	246
ELECTRICAL SYSTEM	248
ELECTRICAL SYSTEM	248
GENERAL SERVICE INFORMATION	250
BATTERIES	254
BULB AND LAMP REPLACEMENT	258
MACHINE STORAGE	264
SPECIFICATIONS	266
DIESEL ENGINE	266
GENERAL MACHINE	268
TRAVEL SPEEDS	271
APPROXIMATE MEASUREMENTS AND WEIGHTS	279
NOISE LEVELS	284
CASE TECHNICAL MANUALS	291

TRIM THIS EDGE

III

TRIM THIS EDGE

RIGHT PAGE

TO THE OWNER

5150 TRACTOR
With Mechanical Front Drive (MFD)



J03908

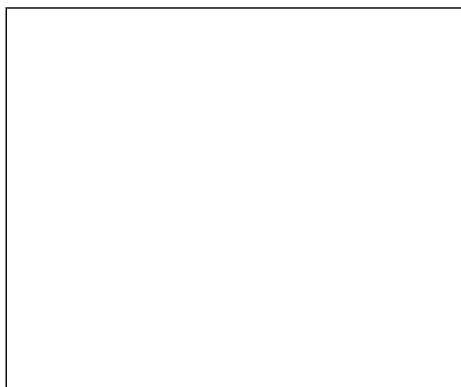
TRIM THIS EDGE

Dealer Stamp



Manufacturer:

Case Germany GmbH
Industriestraße 39
41460 Neuss 1
Germany



NOTE: This manual replaces the previous operators manual 9-27314.

TRIM THIS EDGE

RIGHT PAGE

TO THE OWNER

TO THE OWNER

This manual contains important information about the safe operation, adjustment and maintenance of your Case Tractor. Refer to the Detail Index at the end of this manual for locating specific items about your machine.

The right and left of the tractor in this manual are the same as your right and left when sitting in the tractor seat looking forward.

DO NOT operate or permit anyone to operate or service this tractor until you or the other persons have read this manual. Use only trained operators who have demonstrated the ability to operate and service this tractor correctly and safely.

This tractor, with standard equipment and authorized attachments, is intended to be used for farming, etc.

DO NOT use this tractor for any application or purpose other than those described in this manual. Consult an authorized dealer or the Case Corporation on changes, additions or modifications that can be required for this tractor to comply with various country regulations and safety requirements. Unauthorized modifications will cause serious injury or death. Anyone making such unauthorized modifications is responsible for the consequences.

Keep this Operators Manual in the manual compartment provided on this machine. Make sure this manual is complete and in good condition. Contact your dealer to obtain additional manuals. Contact your dealer for any further information or assistance about your tractor. Your dealer has technicians with special training that know the best methods of repair and maintenance for your tractor.

IMPORTANT: This operators manual is part of your tractor. If the tractor is sold, loaned or rented the operators manual **MUST** go with it.

TRIM THIS EDGE



OPERATORS MANUAL STORAGE
(CAB MODEL)

TRIM THIS EDGE

LEFT PAGE

Declaration of Conformity

This tractor complies with the provisions of directive 89/336/EEC:

-Electromagnetic Compatibility.

TRIM THIS EDGE

TRIM THIS EDGE

RIGHT PAGE

IDENTIFICATION NUMBERS/MACHINE COMPONENTS

PRODUCT IDENTIFICATION AND SERIAL NUMBERS

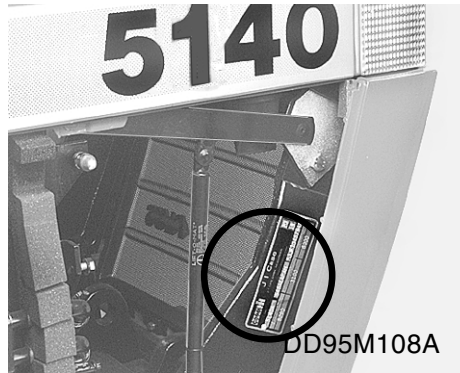
Write your machine Model number, Product Identification Number (P.I.N.), and Serial numbers on the lines provided below. If needed, give these numbers to your Case dealer when you need parts or information for your machine.

Make a record of the numbers. Keep the record and your Manufacturers Statement of Origin in a safe place. If the machine is stolen, report the numbers to your local law enforcement agency.

Serial Number Locations

TRIM THIS EDGE

TRACTOR



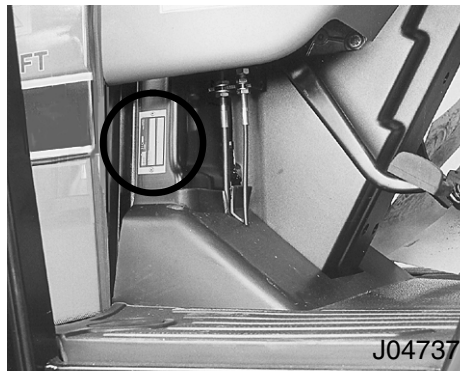
Model Number _____
Product Identification Number _____

TRACTOR



Model Number _____
Product Identification Number _____

TRACTOR - WITH CAB



Model Number _____
Product Identification Number _____

TRACTOR - WITH ROPS FRAME



Model Number _____
Product Identification Number _____

TRIM THIS EDGE

LEFT PAGE

Buy Now



Our support email:

ebooklibonline@outlook.com