

# 9350 Tractor

## Operators Manual

Rac 9-27742

**CASE** *iii*



*THIS SAFETY ALERT SYMBOL INDICATES IMPORTANT SAFETY MESSAGES IN THIS MANUAL. WHEN YOU SEE THIS SYMBOL, CAREFULLY READ THE MESSAGE THAT FOLLOWS AND BE ALERT TO THE POSSIBILITY OF PERSONAL INJURY OR DEATH.*

M171B

Safety Decals on this machine use the words **Danger, Warning or Caution**, which are defined as follows:

- **DANGER:** Indicates an immediate hazardous situation which, if not avoided, will result in death or serious injury. The color associated with Danger is RED.
- **WARNING:** Indicates a potentially hazardous situation which, if not avoided will result in serious injury. The color associated with Warning is ORANGE.
- **CAUTION:** Indicates a potentially hazardous situation which, if not avoided, may result in minor or moderate injury. It may also be used to alert against unsafe practices. The color associated with Caution is YELLOW.



# WARNING

IMPROPER OPERATION OF THIS MACHINE CAN CAUSE INJURY OR DEATH. BEFORE USING THIS MACHINE, MAKE CERTAIN THAT EVERY OPERATOR:

- Is instructed in safe and proper use of the machine.
- Reads and understands the Manual(s) pertaining to the machine.
- Reads and understands ALL Safety Decals on the machine.
- Clears the area of other persons.
- Learns and practices safe use of machine controls in a safe, clear area before operating this machine on a job site.

It is your responsibility to observe pertinent laws and regulations and follow Case Corporation instructions on machine operation and maintenance.

## GENERAL TABLE OF CONTENTS

TO THE OWNER .....	1
IDENTIFICATION NUMBERS.....	3
PRODUCT IDENTIFICATION AND SERIAL NUMBERS .....	3
SAFETY .....	5
DECALS .....	8
ROLL OVER PROTECTIVE STRUCTURE (ROPS) .....	12
INSTRUMENTS/CONTROLS .....	14
DIGITAL INSTRUMENT CLUSTER .....	14
MECHANICAL GAUGE INSTRUMENT PANEL .....	22
TRUE GROUND SPEED SENSOR .....	24
AREA METER (IF EQUIPPED) .....	25
GENERAL FEATURES/FUNCTIONALITY .....	25
AREA METER OPERATION .....	26
AREA METER CALIBRATION .....	29
ALTERNATE H2 CALIBRATION PROCEDURE .....	31
USING THE AREA METER TO CALCULATE OR DISPLAY	
DISTANCE .....	31
MEMORY .....	32
IMPLEMENT MONITOR CONNECTOR .....	32
REMOTE HOLD .....	33
IMPLEMENT STATUS SWITCH .....	33
OPERATING CONTROLS .....	34
BEFORE STARTING THE ENGINE .....	52
RUN-IN PROCEDURE .....	55
SEAT BELT .....	56
ENGINE STARTING PROCEDURE .....	57
STOPPING THE ENGINE .....	60
COLD TEMPERATURE OPERATION .....	61
TRANSMISSION OIL HEAT MAINTAINER .....	63
TOWING THE TRACTOR .....	65
TRANSPORTING TRACTOR .....	65
FRONT AXLE STEERING (IF EQUIPPED) .....	66
WHEEL SLIP RECOMMENDATIONS .....	68
INCHING (CLUTCH) PEDAL OPERATION .....	69
POWER SHIFT TRANSMISSION (IF EQUIPPED) .....	70
12-SPEED SYNCHROSHIFT AND 24-SPEED HI-LO .....	76
SYNCHROSHIFT TRANSMISSION (IF EQUIPPED) .....	76
LIMITED SLIP DIFFERENTIAL LOCK (IF EQUIPPED) .....	79
POWER TAKEOFF (IF EQUIPPED) .....	80
DRAWBAR .....	84
SAFETY CHAIN .....	85
TRACTOR WARNING LAMPS AND SMV SYMBOL .....	86
IMPLEMENT WARNING LAMPS AND SMV SYMBOL .....	88

TRIM THIS EDGE

TRIM THIS EDGE

FIELD OPERATION.....	89
DRAWBAR CLEVIS PREPARATION .....	89
THREE POINT HITCH PREPARATION .....	92
HITCH COUPLER - CATEGORY III .....	99
THREE POINT HITCH OPERATION .....	100
REMOTE HYDRAULICS PREPARATION .....	110
AUXILIARY POWER CONNECTIONS .....	118
INSTRUMENT CLUSTER CALIBRATION .....	121
SCRAPER OPERATIONS .....	125
STEERING SYSTEM CALIBRATION .....	127
TIRES/WHEELS/SPACING/BALLAST .....	132
TIRE AND RIM EQUIPMENT .....	132
BIAS TIRE PRESSURE AND LOAD CAPACITY CHART .....	135
TIRE PRESSURE FOR MAXIMUM TIRE LOAD AT RATED INFLATION .....	136
CONVENTIONAL SIZE RADIAL TIRE PRESSURE AND LOAD CAPACITY CHART .....	137
TIRE AND RIM SERVICE .....	140
WHEEL BOLT TORQUES .....	140
TREAD POSITIONS .....	141
BAR AXLE WHEEL ADJUSTMENT .....	146
TREAD POSITIONS .....	148
ARTICULATION STOPS .....	150
OUTBOARD PLANETARY AXLE .....	151
FRONT AXLE - OUTER WHEEL DISC IN .....	152
FRONT AXLE - OUTER WHEEL DISC OUT .....	153
TRACTOR BALLAST .....	161
CHEMICAL TANK MOUNTING .....	172
LUBRICATION/MAINTENANCE CHARTS.....	174
LUBRICATION/MAINTENANCE CHART .....	174
LUBRICATION/FILTERS/FLUIDS .....	176
GRILLE AND HOOD .....	176
ENGINE HOURMETER .....	177
GREASE FITTINGS .....	178
FLUID LEVELS AND FILTERS .....	183
FRONT STEERABLE AXLE (IF EQUIPPED) .....	188
SYSTEM CAPACITIES .....	190
ENVIRONMENT .....	190
PLASTIC AND RESIN PARTS .....	190
ENGINE LUBRICATION .....	191
FUEL SYSTEM .....	194
COOLING SYSTEM .....	197
COOLANT CAPACITY CHART .....	204
AIR INDUCTION SYSTEM .....	205

SERVICE SPECIFICATIONS .....	211
HYDRAULIC OIL .....	214
ADJUSTABLE AXLE (BAR TYPE) .....	217
OUTBOARD PLANETARY AXLE (NON ADJUSTABLE) .....	219
FRONT STEERABLE AXLE (IF EQUIPPED) .....	221
BRAKE SYSTEM .....	225
OPERATORS CAB .....	226
 MAINTENANCE/ADJUSTMENTS .....	 228
COOLING SYSTEM .....	228
FAN BELT, ALTERNATOR BELT AND AIR CONDITIONING	
COMPRESSOR BELT .....	229
REFRIGERANT CHECK .....	232
SEAT BELT .....	232
OPERATORS SEAT .....	233
ENGINE VALVE AND INJECTOR ADJUSTMENT .....	234
TRACTOR DIAGNOSTIC CODES .....	235
 ELECTRICAL SYSTEM .....	 238
ELECTRICAL SPECIFICATIONS .....	238
GENERAL SERVICE INFORMATION .....	240
BATTERIES .....	241
BULB AND LAMP REPLACEMENT .....	245
 STORAGE.....	 251
STORAGE PREPARATION .....	251
REMOVING FROM STORAGE .....	252
 SPECIFICATIONS .....	 253
DIESEL ENGINE .....	253
POWER TRAIN .....	254
TRACTOR WEIGHTS .....	256
TRAVEL SPEEDS .....	257
APPROXIMATE OVERALL MEASUREMENTS .....	259
 DETAIL INDEX .....	 261

TRIM THIS EDGE

## TO THE OWNER

This manual contains important information about the safe operation, adjustment and maintenance of your Case IH tractor. Refer to the Detail Index at the end of this manual for locating specific items about the tractor.

DO NOT operate or permit anyone to operate or service this tractor until you or other persons have read this manual. All persons training to operate, or who will be operating this tractor should be old enough to possess a valid local vehicle operating permit (or other applicable local age requirement) and must have demonstrated the ability to operate and service the tractor correctly and safely.

This tractor, with standard equipment and authorized attachments, is intended to be used for normal farming and related operations.

DO NOT use this tractor for any application or purpose other than those described in this manual. Consult an authorized dealer or the Case Corporation on changes, additions or modifications that can be required for this machine to comply with various country regulations and safety requirements. Unauthorized modifications can cause serious injury or death. Anyone making such unauthorized modifications is responsible for the consequences.

If your tractor requires replacement parts, do not use unauthorized parts or substitute materials. Case Corporation dealers stock Case approved service parts and have technicians with special training that know the best methods of repair and maintenance for your tractor.

### Model 9350 Tractor (RCS)



MK98G051

**NOTE:** When you are in the tractor seat looking forward, the right hand and left hand of the tractor are the same as your right and left hand.

TRIM THIS EDGE

TO THE OWNER

---

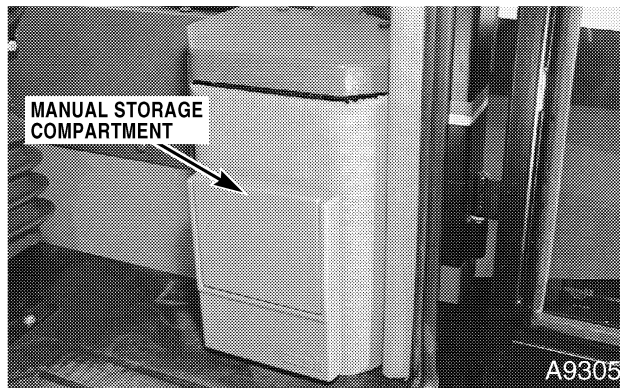
## Model 9350 Tractor (Planetary Axle)



F00122

TRIM THIS EDGE

### Manual Storage Compartment



Keep the Operators Manual in the storage compartment provided in your tractor cab. The operators manual must be available for use by all operators. Make sure this manual is complete and in good condition. Contact your dealer to obtain additional manuals or for any additional information or assistance about your tractor.

**NOTE:** Also, refer to the Cummins Engine Operation and Maintenance Manual supplied with your tractor for supplemental engine maintenance information and procedures not covered in this manual. Adhere to the Lubrication and Maintenance Schedule as outlined in this manual.

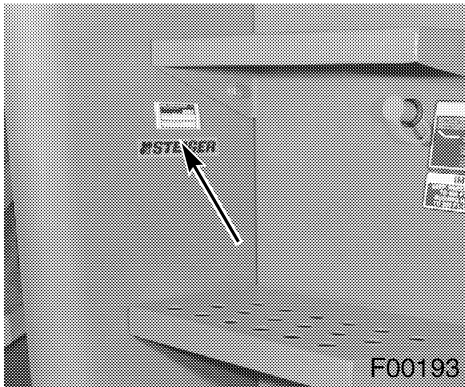
**IDENTIFICATION NUMBERS**

**PRODUCT IDENTIFICATION AND SERIAL NUMBERS**

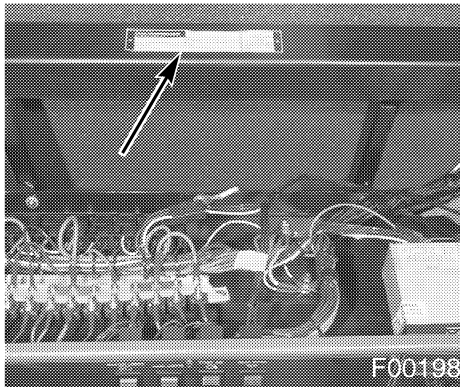
Write your machine Model Number, Product Identification Number (P.I.N.), and Serial Numbers of major components on the lines provided. If needed, give these numbers to your dealer when you need parts or information for your machine.

- 1. TRACTOR MODEL NUMBER \_\_\_\_\_
- 2. PRODUCT IDENTIFICATION NUMBER \* JEE \_\_\_\_\_ \*
- 3. ENGINE SERIAL NUMBER \_\_\_\_\_
- 4. TRANSMISSION SERIAL NUMBER \_\_\_\_\_
- 5. CAB OR ROPS SERIAL NUMBER \_\_\_\_\_
- 6. AXLE SERIAL NUMBER - FRONT \_\_\_\_\_
- 7. AXLE SERIAL NUMBER - REAR \_\_\_\_\_

**Identification Number Locations**



TRACTOR MODEL AND PRODUCT IDENTIFICATION NUMBERS

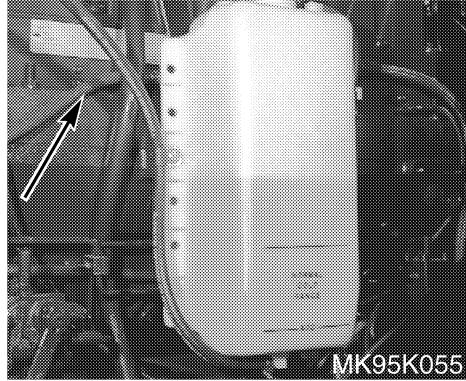


ROPS SERIAL NUMBER

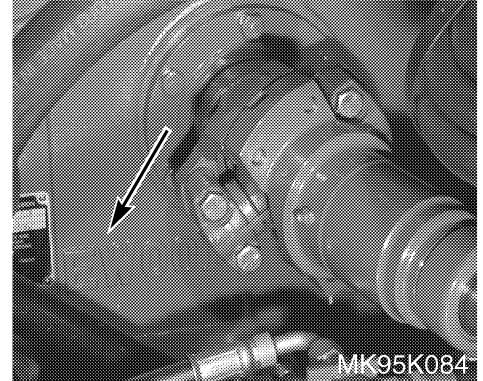
TRIM THIS EDGE



## IDENTIFICATION NUMBERS

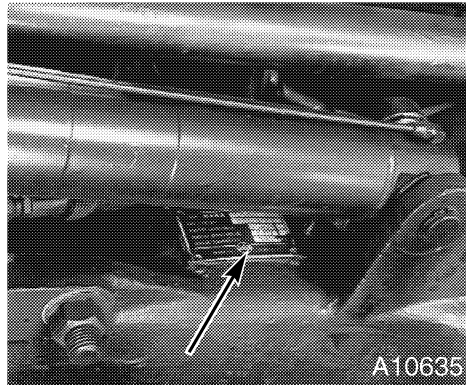


ENGINE SERIAL NUMBER

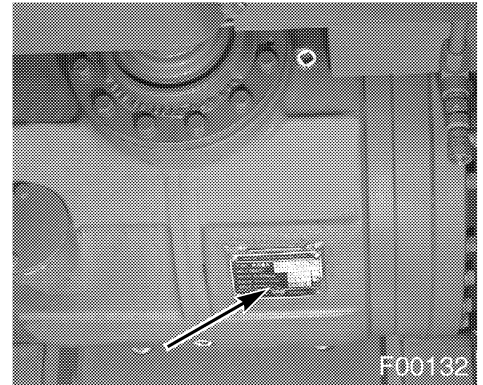


TRANSMISSION SERIAL NUMBER

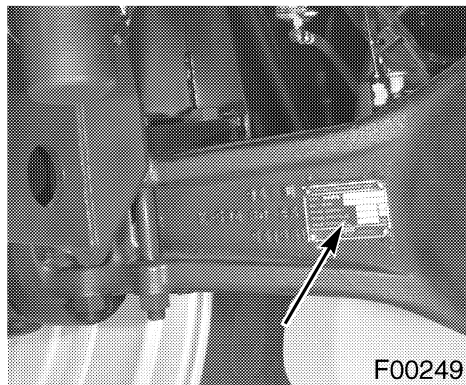
TRIM THIS EDGE



STEERABLE PLANETARY AXLE SERIAL NUMBER - FRONT



BAR AXLE SERIAL NUMBER - FRONT AND REAR



PLANETARY AXLE SERIAL NUMBER - FRONT



PLANETARY AXLE SERIAL NUMBER - REAR


## **SAFETY**

Understand that your safety and the safety of other persons is measured by how you service and operate this machine. Know the positions and operations of all controls before you try to operate. **MAKE SURE YOU CHECK ALL CONTROLS IN A SAFE AREA BEFORE STARTING YOUR WORK.**

READ THIS MANUAL COMPLETELY and make sure you understand the controls. All equipment has a limit. Make sure you understand the speed, brakes, steering, stability and load characteristics of this machine before you start to operate.

The safety information given in this manual does not replace safety codes, insurance needs, federal, state and local laws. Make sure your machine has the correct equipment needed by the local laws and regulations.

Case Corporation is continuing to work for your safety: by making tractors with better protection and by giving these rules for safe operation.

	<p><i>THIS SAFETY ALERT SYMBOL INDICATES IMPORTANT SAFETY MESSAGES IN THIS MANUAL. WHEN YOU SEE THIS SYMBOL, CAREFULLY READ THE MESSAGE THAT FOLLOWS AND BE ALERT TO THE POSSIBILITY OF PERSONAL INJURY OR DEATH.</i></p> <p>M171B</p>
--	--

TRIM THIS EDGE

### **Safety Rules**

- Before starting the engine, be sure all operating controls are in neutral or park lock position. This will eliminate accidental movement of the machine or start up of power driven equipment. R106E
- Operate controls only when seated in the operators seat. R137A
- Securely fasten your seat belt. Your tractor is equipped with a ROPS cab, ROPS canopy or ROPS frame for your protection. The seat belt can help insure your safety if it is used and maintained. Never wear a seat belt loosely or with slack in the belt system. Never wear the belt in a twisted condition or pinched between the seat structural members. R437
- A frequent cause of personal injury or death is persons falling off and being run over. Do not permit others to ride. Only one person-the operator- should be on the machine when it is in operation. R115B
- Before leaving the tractor, stop the engine, put all controls in neutral, engage the park brake and remove the key from the key switch. R301A

## SAFETY/DECALS

---

- Stay off slopes too steep for safe operation. Shift down before you start up or down a hill with a heavy load. Avoid “free wheeling”. R123A
- Do not drive on roads, or at high speed anywhere, with the differential lock engaged. Difficult steering will occur, and can result in an accident. In field operation, use the differential lock for traction improvement, but release for turning at row ends. R116A
- Travel speed should be such that complete control and machine stability is maintained at all times. Where possible, avoid operating near ditches, embankments and holes. Reduce speed when turning, crossing slopes, and on rough, slick, or muddy surfaces. R109B
- Collision of high speed road traffic and slow moving machines can cause personal injury or death. On roads, use flasher/lights according to local laws. Keep SMV emblem visible. Pull over to let faster traffic pass. Slow down and signal before turning off. R110E
- Make sure that the weight of a trailed vehicle that is not equipped with brakes, NEVER EXCEEDS the weight of the machine that is towing the vehicle. Stopping distance increases with increasing speed as the weight of the towed load increases, especially on hills and slopes. R114B
- Extra weight and bad traction conditions such as mud or ice increase your stopping distance. Remember that liquid in the tires, weights on the machine or wheels, tanks filled with fertilizer, herbicides or insecticides - all these add weight and increase the distance you need in which to stop. R138B
- PTO driven machinery can cause serious injury. Before working on or near the PTO shaft, or servicing or clearing the driven machine, put the PTO lever in the DISENGAGE position and STOP the engine. R154A
- Whenever a PTO driven machine is in operation, the PTO guard must be in place for most operations to prevent injury to the operator or bystanders. Where attachments, such as pumps, are installed on the PTO shaft (especially if the tractor PTO guard is moved upward or removed), extended shielding equivalent to the PTO guard must be installed with the attachment. Install the PTO guard to its original position immediately when the attachment is removed. R273A
- When doing stationary PTO work and dismounting from the tractor with the PTO running, keep clear of all moving parts as they are a potential safety hazard. R127A
- When doing stationary PTO work, install the front and rear frame articulation block to prevent accidental articulation of the tractor. Put the transmission in neutral and engage the park brake. R298A
- Never operate the engine in a closed building. Proper ventilation is required under all circumstances. R142A

## SAFETY/DECALS

- Never refuel the machine when the engine is hot or running. Never smoke while refueling.  
R139C
- Check and service cooling system according to maintenance instructions. Hot coolant can spray out if radiator cap is removed while system is hot. To remove radiator cap, let system cool, turn to first notch, then wait until all pressure is released. Scalding can result from fast removal of radiator cap.  
R141C
- Hydraulic oil or diesel fuel leaking under pressure can penetrate the skin and cause infection or other injury.  
To Prevent Personal Injury:  
Relieve all pressure, before disconnecting fluid lines.  
Before applying pressure, make sure all connections are tight and components are in good condition.  
Never use your hand to check for suspected leaks under pressure.  
Use a piece of cardboard or wood for this purpose. If injured by leaking fluid, see your doctor immediately.  
R149B
- Battery explosion and/or damage to electrical components can result from improper connection of booster batteries or charger. Connect positive to positive and negative to negative. Externally, battery acid can cause burns and blindness, and taken internally it is poison.  
R146B
- It is good practice to carry a fire extinguisher on the machine. Be sure that the extinguisher is properly maintained and be familiar with its proper use.  
R102B
- Do not turn the steering wheel until everyone is clear of the equipment and the center hinge area. Turning the steering wheel can swing the tractor and equipment from side to side.  
R303A
- Always use the hand rails when mounting or dismounting from the tractor. Always face the tractor when mounting and dismounting. This will provide more secure hand and feet mobility to help prevent slipping and possible injury.  
R304A
- Always keep the cab windows and rear view mirrors clean to provide the best all around visibility while operating the tractor.  
R4162
- Do not pull with elastic tow ropes. Elastic tow rope stores energy. Sudden release may cause injury or death.  
M425
- No provisions are made for riders.  
M643
- Young children should not be permitted to operate or ride the tractor under any circumstances.  
M630

TRIM THIS EDGE

**Buy Now**



Our support email:

[ebooklibonline@outlook.com](mailto:ebooklibonline@outlook.com)