

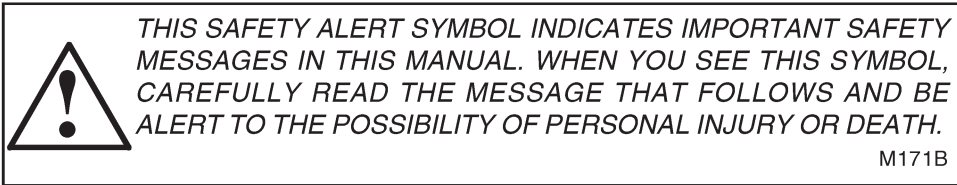
8825 & 8825HP Windrower Tractor

Operators Manual

9-29501

Reprinted




CASE III



If Safety Decals on this machine use the words **Danger, Warning or Caution**, which are defined as follows:

- **DANGER:** Indicates an immediate hazardous situation which if not avoided, will result in death or serious injury. The color associated with Danger is RED.
- **WARNING:** Indicates an potentially hazardous situation which if not avoided, will result in serious injury. The color associated with Warning is ORANGE.
- **CAUTION:** Indicates an potentially hazardous situation which if not avoided, may result in minor or moderate injury. It may also be used to alert against unsafe practices. The color associated with Caution is YELLOW.

If Safety Decals on this machine are ISO two panel Pictorial, decals are defined as follows:

- The first panel indicates the nature of the hazard.
- The second panel indicates the appropriate avoidance of the hazard.
- Background color is YELLOW.
- Prohibition symbols such as   and  if used, are RED.



WARNING

IMPROPER OPERATION OF THIS MACHINE CAN CAUSE INJURY OR DEATH. BEFORE USING THIS MACHINE, MAKE CERTAIN THAT EVERY OPERATOR:

- Is instructed in safe and proper use of the machine.
- Reads and understands the Manual(s) pertaining to the machine.
- Reads and understands ALL Safety Decals on the machine.
- Clears the area of other persons.
- Learns and practices safe use of machine controls in a safe, clear area before operating this machine on a job site.

It is your responsibility to observe pertinent laws and regulations and follow Case Corporation instructions on machine operation and maintenance.



8825 & 8825HP Windrower Tractor



81WT-96079-01

TO OUR CUSTOMER

We appreciate your confidence in CASE IH Farm Equipment and thank you for your patronage. In preparing this manual, we hope we have furnished you with a valuable tool for operating and maintaining this fine machine. Use this manual as your guide. Practicing the instructions given here will result in many years of dependable service from your machine.

Your Dealer can give you assistance with CASE IH parts and specially trained personnel to assist you in repair and maintenance.

Call your Dealer if you need any assistance or information.

**CALIFORNIA
Proposition 65 Warning**

Diesel engine exhaust and some of its constituents are known to the State of California to cause cancer, birth defects, and other reproductive harm.

TABLE OF CONTENTS

SPECIFICATIONS	IV
SERIAL NUMBERS	VI
CHECKLISTS	VII
SAFETY PRECAUTIONS	1
GENERAL INFORMATION	9
DESCRIPTION	11
SERVICING	21
PREPARATION	39
OPERATION	41
MAINTENANCE	55
TROUBLESHOOTING	83
STORAGE	86
EXTRA EQUIPMENT	88
ALPHABETICAL INDEX	89

SPECIFICATIONS

SPECIFICATIONS

(Specifications and design are subject to change without notice and without liability therefore.)

MODEL 8825 and 8825HP Windrower Tractor

DIMENSIONS AND WEIGHTS

Weight without header (approx.) 5950 LBS (2699 kg)

Overall length

with draper header 264 IN (6704 mm)

with auger header 242 IN (6147 mm)

Height

top of cab 121 IN (3073 mm)

Clearance under walking beam 36.5 IN (927 mm)

Clearance under frame 35.4 IN (889 mm)

Width, without header

outside of hubs 119.6 IN (3038 mm)

with standard tires 139.5 IN (3543 mm)

with optional tires 147.5 IN (3747 mm)

Wheel base 124 IN (3150 mm)

Tread width

standard tires 122.6 IN (3114 mm)

optional tires 127 IN (3226 mm)

Tread width, castor wheels

minimum 84.3 IN (2140 mm)

maximum 110.2 IN (2800 mm)

TIRES

Drive wheels

standard 21.5L- 16.1 (I-3) bar tread

optional flotation 21.5L - 16.1 (R-3) Turf tread

wheel nut size 5/8-18

wheel nut torque 200 LB·FT (271 N·m)

tire pressure 24 psi (165 kPa)

Rear caster wheels 11.5L-15 4-ply implement rib

wheel bolt size 9/16-18 x 1-1/8

wheel bolt torque 120 LB·FT (165 N·m)

tire pressure 28 psi (193 kPa)

ENGINE

Model

8825 Case, 4-390 Diesel

8825HP Case, 4T-390 Diesel

Horsepower

8825 75 at 2300 rpm (r/min)

8825HP 96 at 2300 rpm (r/min)

High Idle 2500 rpm (r/min)

Displacement 239 CU IN (3.9 L)

Cooling system capacity 22 U.S. quarts (20.8 L)

Cooling fan diameter 17.7 IN (450 mm)

Fuel ASTM No. 2 Diesel

Fuel tank capacity 42 U.S. gallons (159 L)

ELECTRICAL SYSTEM

System voltage 12 volts

Grounding negative

Batteries

quantity 2

capacity, each 12 volt, 450 amp

minimum cranking capacity at 0°F

type SAE J537, group size 24 or 27, top post

Alternator

manufacturer Robert Bosch

output 65 amperes

GROUND DRIVE SYSTEM

Final drive roller chain

primary reduction No. 50

final reduction No. 80

Tandem pump Vickers model 19, piston

Ground drive motors Vickers model MFE, fixed displacement motors

HYDRAULIC SYSTEM

Ground drive system
 relief pressure 5500 psi (37 921 kPa)
 Header and reel lift
 relief pressure 2000 psi (13 790 kPa)

CAB

Cab glass Tinted, 63 sq ft (5.9 m²)
 Steering column 5 position tilt
 Instrument panel gauges hourmeter, fuel gauge,
 engine coolant temperature gauge
 Instrument cluster warning lamps alternator, engine oil
 pressure, engine coolant
 temperature, with audible
 alarm for each function
 Air ride seat
 8825 not available
 8825HP standard
 Ground Speed Assist
 8825 optional
 8825HP standard

AIR CONDITIONING

System size 22 000 BTU/hr
 Refrigerant HFC 134a
 Capacity 4.6 LBS (2 kg)
 Compressor Sanden 507H
 displacement 9.5 CU IN (154.9 cc)

ACCESSORIES

Lights 4 lights front, square halogen
 2 working lights, one each side, square halogen
 1 light rear, square halogen
 flashers on header and tractor
 tail light, turn signals
 Rear view mirrors (left hand standard) deluxe
 Controls shape-coded handles

LUBRICATION

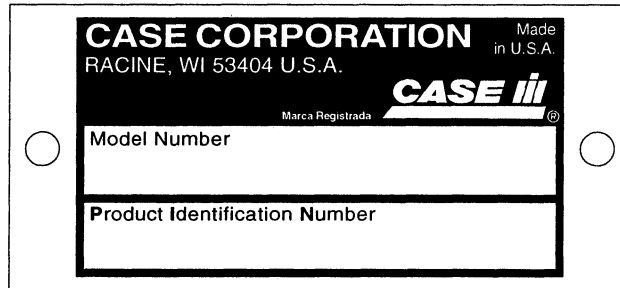
Grease fittings
 lubricant CASE IH 251 HEP Lithium Grease
 Wheel bearings
 lubricant heavy duty wheel bearing grease
 Engine oil
 quantity with filter change 11 U.S. quarts (10.5 L)
 type of fluid Case IH No. 1 Engine Oil,
 SAE 15W 40, API CE, CDII/CF-4
 Hydraulic system
 quantity
 total system 12 U.S. gallons (45 L)
 reservoir 8.5 U.S. gallons (32 L)
 type of fluid engine oil, SAE 15W 40
 type of fluid, alternate Case IH Hy-Tran Plus
*NOTE: Hy-Tran Plus can be added to factory-installed
 fluid, but to get the full benefit of the qualities of Hy-
 Tran Plus a complete oil replacement is required.*
 Chaincases, final drive
 quantity, each 4 quarts (3.8 L)
 lubricant Case IH 135H EP Gear Lube 85W 140

SERIAL NUMBERS

SERIAL NUMBERS

When parts or assistance are needed, or when writing to your Authorized Case IH Dealer, always give this information:

1. Model Number of the Machine
2. Product Identification Number



MODEL NUMBER AND PRODUCT IDENTIFICATION NUMBER PLATE

**FOR LOCATION OF THE
PRODUCT IDENTIFICATION NUMBER PLATE
ON THIS MACHINE, SEE THE GENERAL INFORMATION
SECTION IN THIS MANUAL.**

Write the serial numbers of your machine on the lines below.

MODEL NUMBER _____

PRODUCT IDENTIFICATION NUMBER _____

CHECKLISTS



Use good safety practices when working around this machine.

Daily Checklist

- _____ Do the required daily lubrication items and those whose calendar time is due.
- _____ Observe sprockets and components for looseness and alignment.
- _____ Look for loose or missing bolts or parts.
- _____ Check the hydraulic system connections for leaks.
- _____ Check the tension of the pump drive belt and the draper drive belt, if equipped.
- _____ If the machine is to be transported on a road or highway at night or during the day, accessory lights, warning devices and slow moving vehicle emblem must be used for adequate warning to operators of other vehicles. Observe local governmental regulations concerning movement of slow and overwidth vehicles.

Beginning Each Season Checklist

- _____ Remove accumulated dirt, trash, and crop material from machine.
- _____ With machine operating in a stationary position, observe the operation of moving parts. Watch for any signs of faulty operation, overheated bearings, and listen for any unusual sounds.
- _____ Review Safety Precautions.
- _____ Do the required daily lubrication items and those whose calendar time is due.
- _____ Make sure the proper operating adjustments have been made for your crop.
- _____ Check for any special attachment which will help you to do a better job.

Buy Now



Our support email:

ebooklibonline@outlook.com