

**1070 Tractor
Operator's Manual
Starting with
SN 8693001**

9-4031

Reprinted

CASE III






THIS SAFETY ALERT SYMBOL INDICATES IMPORTANT SAFETY MESSAGES IN THIS MANUAL. WHEN YOU SEE THIS SYMBOL, CAREFULLY READ THE MESSAGE THAT FOLLOWS AND BE ALERT TO THE POSSIBILITY OF PERSONAL INJURY OR DEATH.

M171B

If Safety Decals on this machine use the words **Danger, Warning or Caution**, which are defined as follows:

- **DANGER:** Indicates an immediate hazardous situation which if not avoided, will result in death or serious injury. The color associated with Danger is RED.
- **WARNING:** Indicates an potentially hazardous situation which if not avoided, will result in serious injury. The color associated with Warning is ORANGE.
- **CAUTION:** Indicates an potentially hazardous situation which if not avoided, may result in minor or moderate injury. It may also be used to alert against unsafe practices. The color associated with Caution is YELLOW.

If Safety Decals on this machine are ISO two panel Pictorial, decals are defined as follows:

- The first panel indicates the nature of the hazard.
- The second panel indicates the appropriate avoidance of the hazard.
- Background color is YELLOW.
- Prohibition symbols such as   and  if used, are RED.



WARNING

IMPROPER OPERATION OF THIS MACHINE CAN CAUSE INJURY OR DEATH. BEFORE USING THIS MACHINE, MAKE CERTAIN THAT EVERY OPERATOR:

- Is instructed in safe and proper use of the machine.
- Reads and understands the Manual(s) pertaining to the machine.
- Reads and understands ALL Safety Decals on the machine.
- Clears the area of other persons.
- Learns and practices safe use of machine controls in a safe, clear area before operating this machine on a job site.

It is your responsibility to observe pertinent laws and regulations and follow Case Corporation instructions on machine operation and maintenance.

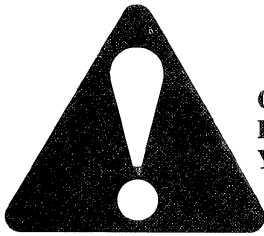
TO THE PURCHASER OF A CASE TRACTOR

The care you give your Case Tractor will greatly determine the satisfaction and service life you will obtain from it. Use this manual as your guide. By observing the instructions and suggestions in this manual, your Case Tractor will serve you well for many years.

As an Authorized Case Dealer, we stock Genuine Case Parts, which are manufactured with the same precision and skill as the original equipment. Our factory trained staff is kept well informed on the best methods of servicing Case equipment and is ready and able to help you.

Should you require additional aid or information, contact us.

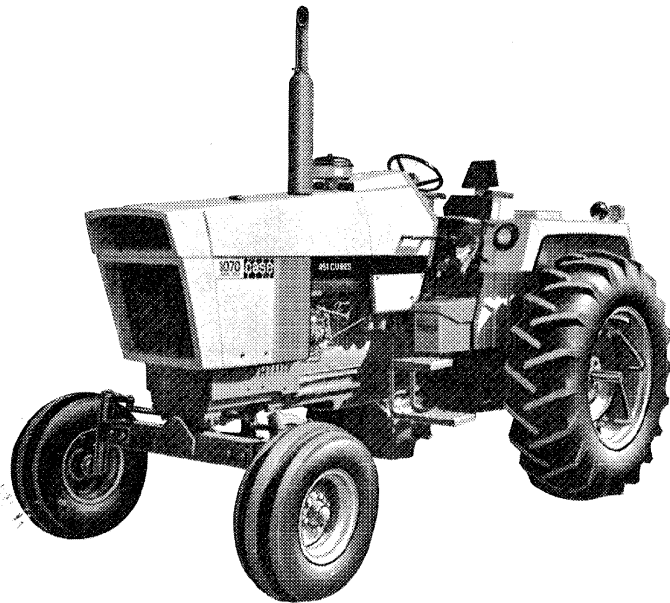
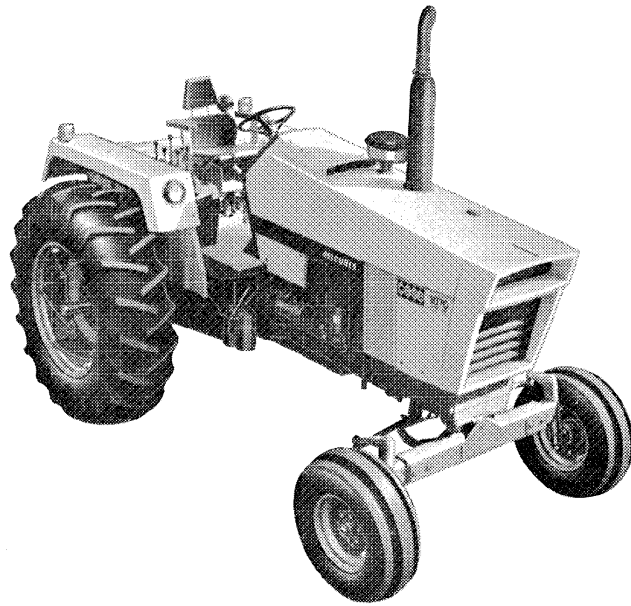
YOUR AUTHORIZED CASE DEALER



**LOOK FOR THIS SYMBOL TO POINT
OUT IMPORTANT SAFETY PRECAUTIONS.
IT MEANS - ATTENTION! BECOME ALERT!
YOUR SAFETY IS INVOLVED.**

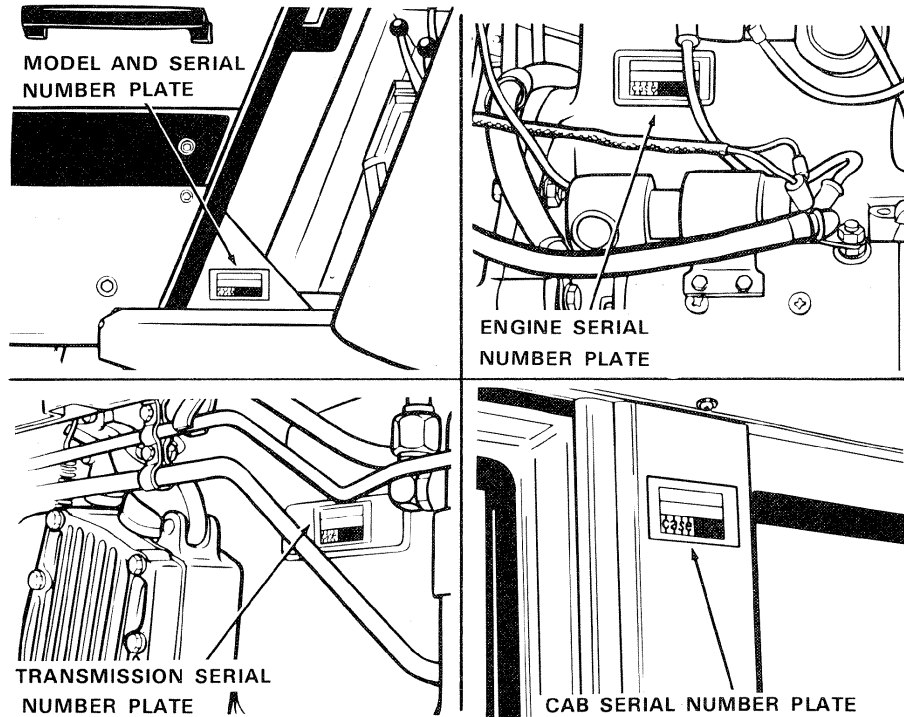
**TO INSURE EFFICIENT AND PROMPT SERVICE, PLEASE
FURNISH US WITH THE MODEL, SERIAL, ENGINE, TRANS-
MISSION AND CAB SERIAL NUMBERS OF YOUR TRACTOR
IN ALL CORRESPONDENCE OR CONTACTS.**

PRICE \$1.45



SERIAL NUMBERS

When ordering parts from your Authorized Case Dealer and in all contacts or correspondence with your dealer, relative to your Case Tractor, always specify the Model, Tractor Serial Number, Engine, Transmission and Cab Serial Numbers.



For convenient reference, fill in the Serial Numbers of your tractor in the spaces provided below.

MODEL DESIGNATION _____
TRACTOR SERIAL NUMBER _____
ENGINE SERIAL NUMBER _____
TRANSMISSION SERIAL NUMBER _____
CAB SERIAL NUMBER _____

NOTE: The terms "Right Hand" and "Left Hand" whenever used in this manual, apply to the tractor as viewed when seated in the operator's seat facing the forward direction of travel.

Diesel Engine

SPECIFICATIONS

General

Type ----- 6 Cylinder, 4 Stroke Cycle,
Valve-in-Head.
Firing Order ----- 1-5-3-6-2-4
Bore ----- 4-3/8 Inches (111mm)
Stroke ----- 5 Inches (127mm)
Piston Displacement ----- 451 Cubic Inches (7390.6cm³)
Compression Ratio ----- 16.5 to 1
Cylinder Sleeve ----- Removable Wet Type
No Load Governed Speed ----- 2260 RPM
Rated Engine Speed ----- 2100 RPM
Engine Idling Speed ----- 725 RPM
*Valve Tappet Clearance (Exhaust) ----- (Hot) .020 Inch (0.508mm)
----- (Cold) .025 Inch (0.635mm)
----- (Intake)---- (Hot and Cold) .015 Inch (0.381mm)

*Hot Settings Are Made After The Engine Has Operated At Thermostat Controlled Temperature For At Least Fifteen Minutes.

Piston and Connecting Rods

Rings per Piston ----- 3
Number of Compression Rings ----- 2
Number of Oil Rings ----- 1
Type Pins ----- Full Floating Type
Type Bearing ----- Replaceable Precision, Steel
Back, Copper-Lead or Aluminum Alloy Liners.

Main Bearings

Number of Bearings ----- 7
Type Bearings ----- Replaceable Precision Steel
Back, Copper-Lead or Aluminum Alloy Liners.

Engine Lubricating System

Oil Pressure ----- 45 to 55 PSI (3.2 to 3.9 kgs/cm²) with Engine Warm and Operating at Rated Engine Speed

Type System ----- Pressure and Spray Circulation

Oil Pump ----- Gear Type

Oil Filter ----- Full Flow Spin on Type

Fuel System

Fuel Injection Pump ----- Robert Bosch, Type PES (Multiple Plunger).

Pump Timing ----- 30 Degrees Before Top Dead Center (Port Closing).

Fuel Injectors ----- Pencil Type
Opening Pressure 3200 PSI (225 kg/cm²)

Fuel Transfer Pump ----- Plunger Type, Integral Part of Injection Pump.

Governor ----- Variable Speed, Fly-Weight Centrifugal Type; Integral Parts of Injection pump.

1st Stage fuel filter ----- Full Flow Spin on Type

2nd Stage fuel filter ----- Full Flow Spin on Type

Fuel Tank Water Trap and Drain ----- Located in Base of Fuel Tank

Fuel Tank Capacity ----- 50 U.S. Gallons (189.3 liters)

Fuel Level Gauge ----- Electric, Located on Instrument Panel.

Hand Primer Pump ----- Located On Top of The Fuel Transfer Pump

Preliminary Fuel Filter ----- Located At The Bottom of the Fuel Transfer Pump

Fuel Tank Filter ----- Located in Fuel Shut-Off Valve in Base of Fuel Tank

general specifications

Cooling System

Capacity ----- 40 U.S. Quarts (37.9 liters)
Type of System ----- Pressurized, Thermostat Controlled
By-Pass Type: Forced Circulation. (Impeller Type Pump).
Radiator ----- Heavy Duty Fin and Tube Type
Thermostat ----- Starts to Open at Approximately 175°F. (79°C.)
Fully at 202°F. (94°C.)
Pressure Cap Required --- (w/o air conditioner) 7 PSI (0.492 kg/cm²)
Pressure Cap Required ---- (w/air conditioner) 14 PSI (0.984 kg/cm²)

When using a proper operating 7 PSI (0.492 kg/cm²) pressure cap, the engine temperature can safely rise to 230°F. (110°C), with a 14 PSI (0.984 kg/cm²) pressure cap the engine temperature can safely rise to 250°F. (121°C.).

Electrical System

Type of System ----- 12 Volt Negative Ground
Batteries ----- (2) 12 Volt Batteries Connected
in parallel.

Group Size 30H, Rated at 1.255 to 1.265
Specific Gravity. Discharge Rate 300 Amps
at 0° F. Voltage drops to 9.2 after 10 seconds.
Voltage drops 1.0 Volt per cell after 4 min.

Alternator ----- 12 Volt 55 Amp Output
Voltage Regulator ----- 12 Volt, Solid State,
Mounted on Alternator.

Starter Motor ----- 12 Volt with Solenoid Switch
Head Lights (2) ----- 12 Volt, 40/40 Watt Sealed High-Low Beam
Flood Lights (2) ----- 12 Volt, 35 Watt, Sealed Beam
Amber Warning Lights (2)----- 12 Volt, Double Face, Flasher Type
Rear Tail Light ----- 12 Volt, 60 Watt Sealed Beam
Combination Tail and Flood Lamp.

Circuit Breaker System over load check - 12 Volt Twin 40 AMP
Breakers connected in parallel, 80 AMP rating.
60 AMP . Min. Continuous capacity.

Lights Circuit Breaker ----- 40 Amp., Located on Light Switch
Parking Brake Warning Light ----- 12 Volt, Red Flasher Type

Parking Brake

Type ----- Cable Actuated by Or-
chlin Type Handle - Adjustable
from Operator's Seat.

Hydraulic Brakes

Type ----- Hydraulic Actuated, Self-
Adjusting Disc Type Differential
Brakes.

Hydraulic Power Assist Brakes

Type ----- Hydraulic, Power Assisted,
Self-Adjusting Disc Type Diff-
erential Brakes.

Mechanical Transmission

Type ----- 2 Speed Gear Range With
a 4 Speed Gear Section.

Gear Selection ----- 8 Speeds Forward - 2 Speeds
Reverse.

Shifting ----- Mechanical With Plunger Type
Locks and Tube Type Inter-
locks.

Power Shift Transmission

Type ----- 3 Speed Compound Planetary
With Hydraulically Actuated
Clutches and a 4 Speed Gear
Range Section.

Gear Selection ----- 12 Speeds Forward and 3 Speeds
Reverse

Shifting ----- Hydraulic Power Shifting Con-
trolled By a Lever On Operators
Console. 4 Speed Range Con-
trolled By a Mechanical Shifter
From a Lever On Operator's
Console.

Hydrostatic Power Steering

Pump Type ----- Gear Type, Driven By The Engine.
Pump Capacity at 2000 Engine RPM ----- 8 GPM (30.3 l/mn)
HGA Hydrostatic Type ----- Integral and Bi-Directional
Gerotor Metering Section, Actuated
By the Steering Wheel.
Actuating Cylinders ----- 2 Way Cylinders Are Integral
Part of Steering Gear Mechanism.

Remote Hydraulic System

Pump ----- Large Volume, Spur Gear, Continuous Running.
Type Valve ----- Dual Valve-Individual Hand Lever Control.
Portable Cylinder Coupling ----- Case Quick Detachable
Break-away Type.
Pump Capacity at 2000 Engine RPM ----- 16 GPM (60.6 l/mn)
Relief Valve Pressure -- 1900 to 2100 PSI (133.6 to 147.6 kg/cm²)
Portable Cylinders ----- Available

Power Take-Off

Type Clutch ----- Hydraulically Operated
Rotation ----- Clockwise
Spline Size---- 540 RPM -- 6 Splines---1-3/8 Inch (34.9mm) Dia.
1000 RPM-- 21 Splines---1-3/8 Inch (34.9mm) Dia.
Engine Speed 1900 RPM ----- 540 or 1000 RPM Shaft Speed

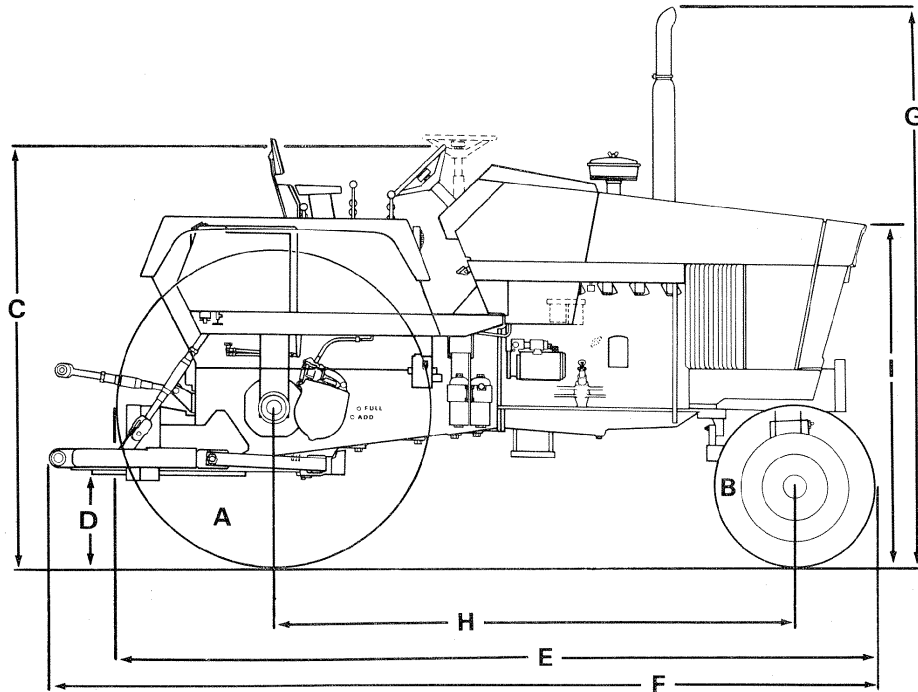
Draft-O-Matic System

Type of sensing ----- Lower Link
Type Control ----- Hand Lever
Type Valve ----- 3 Positions - Raise - Hold - Lower
Type Draft Arms ----- Swinging, with Manual Float Adjustment
Type Hitch ----- 3 Point Category II

Drawbars

Standard or Yoke Type ----- Full Swinging Roller Mounted, Will
Accommodate a 1-1/4 Inch (31.8mm) Dia. Pin.

APPROXIMATE OVERALL MEASUREMENTS



MODEL	ADJUSTABLE
A	18.4-34R1
B	7.50-16F2
C	84 in. (2 134mm)
D	15 in. (381mm)
E	156 in. (3 962mm)

F	162 in. (4 115mm)
G	117 in. (2 972mm)
H	108 in. (2 743mm)
I	78 in. (1 981mm)

A and B Tire Sizes

APPROXIMATE WEIGHT

1070 Tractor 9320 Pounds (4 227 kg).

TIRE AND WHEEL EQUIPMENT

Front

TIRE SIZE	TIRE PLY	RIM SIZE	TREAD TYPE	DUAL	ADJ.	TIRE PRESSURE
6.00-16	8	400E-16	F2	X	X	64 PSI (4.5 kg/cm ²)
7.50L-15	8	6L-15	F2	X	X	52 PSI (3.7 kg/cm ²)
7.50-16	8	550F-16	F2		X	40 PSI (2.8 kg/cm ²)
9.50L-15	8	8LBH-15	F2		X	36 PSI (2.5 kg/cm ²)
9.50-20	6	W7L-20	F2		X	40 PSI (2.8 kg/cm ²)
10.00-16	6	W8L-16	F2		X	28 PSI (1.9 kg/cm ²)
10.00-16	8	W8L-16	F2		X	36 PSI (2.5 kg/cm ²)
11.00L-15	8	8LBH-15	F2		X	36 PSI (2.5 kg/cm ²)
11.00-16	6	W8L-16	F2		X	28 PSI (1.9 kg/cm ²)
11.00-16	8	W8L-16	F1		X	36 PSI (2.5 kg/cm ²)

TIRE AND WHEEL EQUIPMENT

Rear

TIRE SIZE	TIRE PLY	RIM SIZE	TREAD TYPE	DUAL	ADJ.	TIRE PRESSURE
12.4-42	6	W9-42	R1	X	X	24 PSI (1.7 kg/cm ²)
15.5-38	10	W14-38	R1 & R2	X	X	30 PSI (2.1 kg/cm ²)
16.9-34	8	W16L-34	R1	X	X	22 PSI (1.5 kg/cm ²)
16.9-38	8	W14-38	R1	X	X	24 PSI (1.7 kg/cm ²)
18.4-34	6	W15L-34	R1	X	X	16 PSI (1.1 kg/cm ²)
18.4-34	8	W15L-34	R1 & R2	X	X	20 PSI (1.4 kg/cm ²)
18.4-38	6	W16L-38	R1 & R2	X	X	16 PSI (1.1 kg/cm ²)
18.4-38	8	W16L-38	R1 & R2	X	X	20 PSI (1.4 kg/cm ²)
20.8-38	8	W18-38	R1 & R2		X	18 PSI (1.3 kg/cm ²)
20.8-38	10	W18-38	R1 & R2		X	22 PSI (1.5 kg/cm ²)
23.1-30	8	DW20-30	R1 & R2		X	16 PSI (1.1 kg/cm ²)
23.1-34	8	DW20-34	R1 & R2		X	16 PSI (1.1 kg/cm ²)

NOTE: Keep tires inflated to recommended pressures. Check pressures at least every 50 hours of operation or once a week, whichever occurs first. DO NOT reduce rear tire pressure to increase traction. When plowing, increase furrow wheel tire pressure 4 PSI (0.281 kg/cm²).

Buy Now



Our support email:

ebooklibonline@outlook.com