

1175 Tractor
Prior to SN 8712001
Operators Manual

9-4041

Reprinted

CASE III



This symbol means ATTENTION! BECOME ALERT! YOUR SAFETY IS INVOLVED. The message that follows the symbol contains important information about your safety. Carefully read the message. Make sure you fully understand the causes of possible injury or death.

SB001

IF THIS MACHINE IS USED BY AN EMPLOYEE, IS LOANED, OR IS RENTED, MAKE SURE THAT THE OPERATOR UNDERSTANDS THE TWO INSTRUCTIONS BELOW.

BEFORE THE OPERATOR STARTS THE ENGINE:

1. GIVE INSTRUCTIONS TO THE OPERATOR ON SAFE AND CORRECT USE OF THE MACHINE.
2. MAKE SURE THE OPERATOR READS AND UNDERSTANDS THE OPERATOR'S MANUAL FOR THIS MACHINE.



WARNING

IMPROPER OPERATION OF THIS MACHINE CAN CAUSE INJURY OR DEATH.

BEFORE STARTING THE ENGINE, DO THE FOLLOWING:

1. READ THE OPERATOR'S MANUAL.
2. READ ALL SAFETY DECALS ON THE MACHINE.
3. CLEAR THE AREA OF OTHER PERSONS.

LEARN AND PRACTICE SAFE USE OF MACHINE CONTROLS IN A SAFE, CLEAR AREA BEFORE YOU OPERATE THIS MACHINE ON A JOB SITE.

It is your responsibility to observe pertinent laws and regulations and to follow manufacturer's instructions on machine operation and maintenance.

See your Authorized Case dealer for additional operator's manuals, parts catalogs, and service manuals.

TO THE PURCHASER OF A CASE TRACTOR

The care you give your Case Tractor will greatly determine the satisfaction and service you will obtain from it. Use this manual as your guide. By observing the instructions and suggestions in this manual, your Case Tractor will serve you well for many years.

As an Authorized Case Dealer, we stock Genuine Case Parts, which are manufactured with the same precision and skill as the original equipment. Our factory trained staff is kept well informed on the best methods of servicing Case equipment and is ready and able to help you.

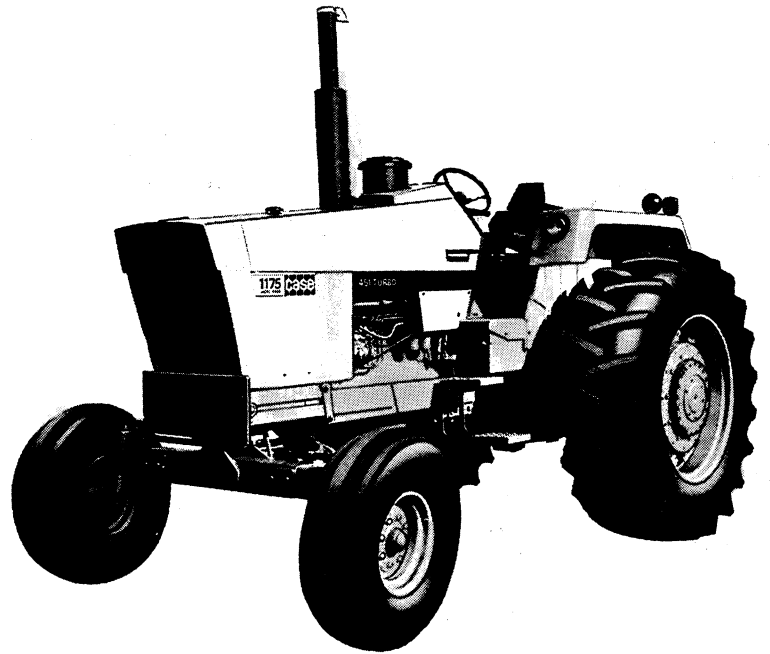
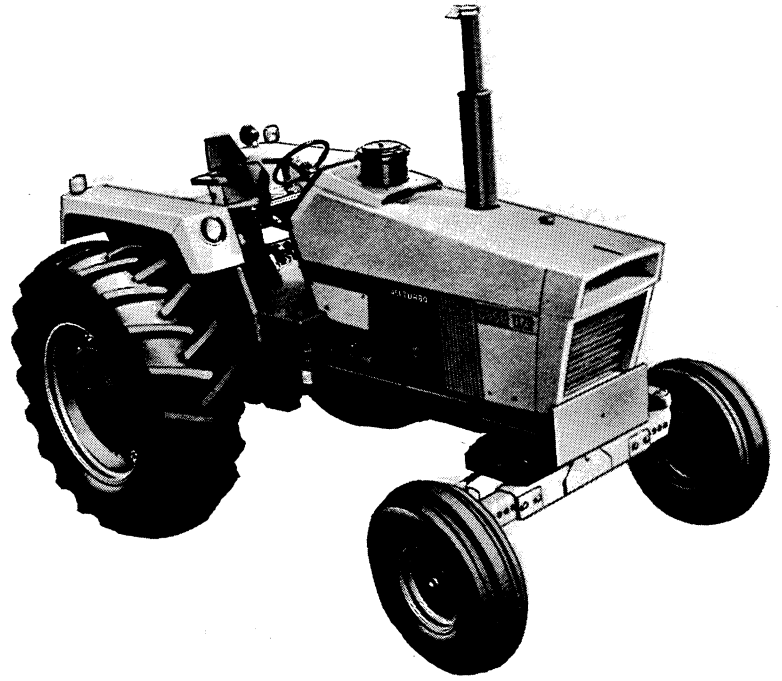
Should you require additional aid or information, contact us.

Your Authorized Case Dealer



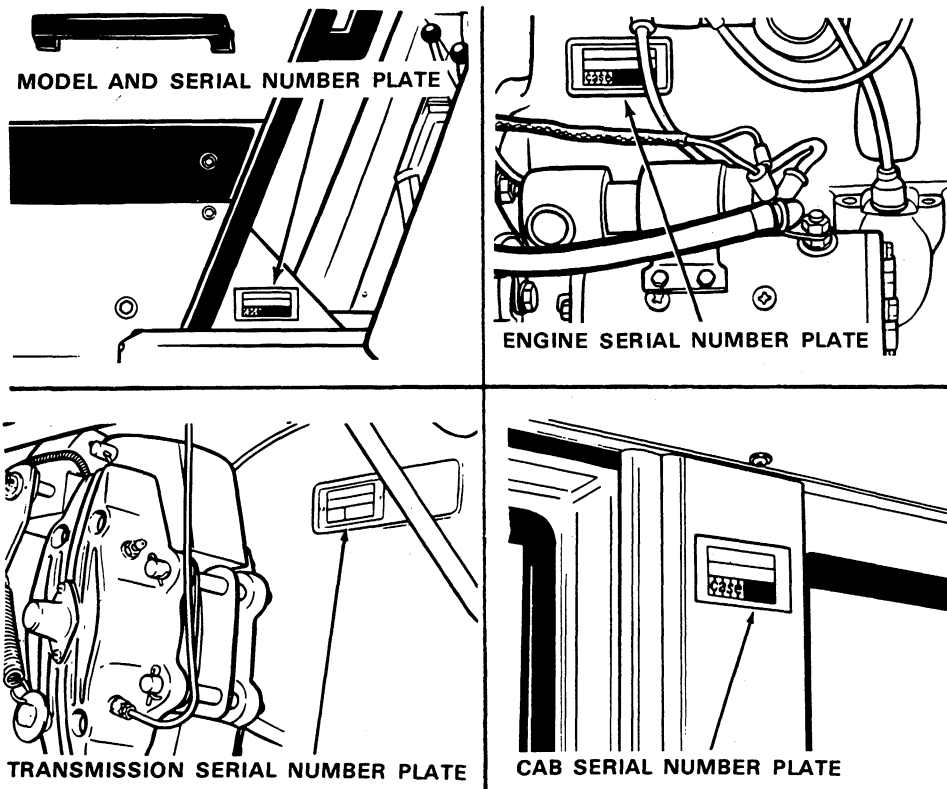
**LOOK FOR THIS SYMBOL TO POINT
OUT IMPORTANT SAFETY PRECAUTIONS.
IT MEANS - ATTENTION! BECOME ALERT!
YOUR SAFETY IS INVOLVED.**

**TO INSURE EFFICIENT AND PROMPT SERVICE, PLEASE
FURNISH US WITH THE MODEL, SERIAL, ENGINE, TRANS-
MISSION AND CAB SERIAL NUMBERS OF YOUR TRACTOR
IN ALL CORRESPONDENCE OR CONTACTS.**



SERIAL NUMBERS

When ordering parts from your Authorized Case Dealer and in all contacts or correspondence with your dealer, relative to your Case Tractor, always specify the Model, Tractor Serial Number, Engine, Transmission and Cab Serial Numbers.



NOTE: The terms "Right Hand" and "Left Hand" whenever used in this manual, apply to the tractor when facing in the direction the tractor will move in forward operation.

For reference, fill in the Serial Numbers of your tractor in the spaces provided below.

Model Designation _____
Tractor Serial Number _____
Engine Serial Number _____
Transmission Serial Number _____
Cab Serial Number _____

Diesel Engine

SPECIFICATIONS

General

Type	6 Cylinder, 4 Stroke Cycle, Valve-in-head, Turbo Charged.
Firing Order	1-5-3-6-2-4
Bore	4-3/8 Inches (111mm)
Stroke	5 Inches (127mm)
Piston Displacement	451 Cubic Inches (7 390.6 cm ³)
Compression Ratio	16.5 to 1
Cylinder Sleeves	Removable Wet Type
No Load Governed Speed	2260 RPM
Rated Engine Speed	2100 RPM
Engine Idling Speed	725 RPM
*Valve Tappet Clearance (Exhaust)	(Hot) .020 Inch (0.508mm) (Cold) .025 Inch (0.635mm)
	(Intake) (Hot and Cold) .015 Inch (0.381mm)

*Hot Settings Are Made After The Engine Has Operated At Thermostat Controlled Temperature For At Least Fifteen Minutes.

Piston and Connecting Rod

Rings per Piston	3
Number of Compression Rings	2
Number of Oil Rings	1
Type Pins	Full Floating Type
Type Bearing	Replaceable Precision, Steel Back, Copper-Lead or Aluminum Alloy Liners.

Main Bearings

Number of Bearings	7
Type Bearings	Replaceable Precision Steel Back, Copper-Lead or Aluminum Alloy Liners.

Engine Lubricating System

Oil Pressure 45 to 55 PSI (3.2 to 3.9 kg/cm²) with
Engine Warm and Operating at Rated Engine Speed.

Type System Pressure and Spray Circulation

Oil Pump Gear Type

Oil Filter Full Flow Spin on Type

Fuel System

Fuel Injection Pump Robert Bosch, Type PES
(Multiple Plunger.)

Pump Timing 30 Degrees Before Top Dead
Center (Port Closing).

Fuel Injectors Pencil Type
(Opening Pressure 3200 PSI) (225 kg-cm²)

Fuel Transfer Pump Plunger Type, Integral Part of
Injection Pump.

Governor Variable Speed, Fly-Weight Centrifugal
Type; Integral Parts of Injection Pump.

1st Stage fuel filter Full Flow Spin on Type

2nd Stage fuel filter Full Flow Spin on Type

Fuel Tank Water Trap and Drain Located in Base
of Fuel Tank.

Fuel Tank Capacity 50 U.S. Gallons (189.3 liters)

Fuel Level Gauge Electric, Located on Instrument
Panel.

Hand Primer Pump Located on Fuel Transfer Pump

Fuel Tank Fuel Filter Located in Fuel Shut-Off
Valve in Base of Fuel Tank

Preliminary Fuel Filter Located At The Bottom
Of The Fuel Transfer Pump.

general specifications

Cooling System

Capacity 40 U.S. Quarts (37.9 liters)
Type of System Pressurized, Thermostat Controlled
By-Pass Type: Forced Circulation,
(Impeller Type Pump).
Radiator Heavy Duty Fin and Tube Type
Thermostat Starts to Open at Approximately 175°F. (79°C.),
Fully Open at 202°F. (94°C.)
Pressure Cap Required .. (w/o Cab Air Conditioner) 7 PSI (0.492 kg/cm²)
Pressure Cap Required .. (w/Cab Air Conditioner) 14 PSI (0.984 kg/cm²)

When using a proper operating 7 PSI (0.492 kg/cm²) radiator pressure cap, the engine temperature can safely rise to 230°F. (110°C.), with a 14 PSI (0.984 kg/cm²) pressure cap the engine temperature can safely rise to 250°F. (121°C.).

Electrical System

Type of System 12 Volt Negative Ground
Batteries (2) 12 Volt Batteries Connected
in parallel.
Group Size 30H, Rated at 1.255 to 1.265
Specific Gravity. Discharge Rate 300 Amps
at 0°F. Voltage Drops to 9.2 after 10
seconds. Voltage drops 1.0 Volt per cell
after 4 min.
Alternator 12 Volt 55 Amp Output
Voltage Regulator 12 Volt, Solid State,
Mounted on Alternator.
Starter Motor 12 Volt with Solenoid Switch
Head Lights (2) ----- 12 Volt, 40/40 Watt Sealed High-Low Beam
Flood Lights (2) 12 Volt, 35 Watt, Sealed Beam
Amber Warning Lights (2)..... 12 Volt, Double Face, Flasher Type
Rear Tail Light 12 Volt, 60 Watt Sealed Beam
Combination Tail and Flood Lamp.
Circuit Breaker System over Load check 12 Volt Twin 40 AMP
Breakers connected in parallel, 80 AMP rating.
60 Amp. Min. Continuous capacity.
Lights Circuit Breaker 40 Amp., Located on Light Switch
Parking Brake Warning Light 12 Volt, Red Flasher Type

Parking Brake

Type Cable Actuated by Orscheln
Type Handle-Adjustable from
Operator's Seat, With Adjustable
and Replaceable Lining Pads.

Hydraulic Power Assist Brakes

Type Hydraulic, Power Assisted,
Self-Adjusting Caliper Disc Type
Differential Brakes, With Replaceable
Lining Pads.

Mechanical Transmission

Type 2 Speed Gear Range With
a 4 Speed Gear Section.

Gear Selection 8 Speeds Forward - 2 Speeds Reverse

Shifting Mechanical With Plunger Type
Locks and Tube Type Interlocks.

Rear Axle

Type Spiral Bevel With Planetary
Reduction in Hub.

Hydrostatic Power Steering

Pump Type Gear Type, Driven By The Engine.

Pump Capacity at 2000 Engine RPM 8 GPM (30.3 l/mn)

HGA Hydrostatic Type Integral and Bi-Directional
Gerotor Metering Section, Actuated
By the Steering Wheel.

Steering Cylinders Two Double Acting Cylinders

Remote Hydraulic System

Pump Gear Type, Driven By the Engine .
Type Valve Dual Valve-Individual Hand Lever Control.
Portable Cylinder Coupling Case Quick Detachable
Break-away Type.
Pump Capacity at 2000 Engine RPM 16 GPM (60.6 l/mn)
Relief Valve Pressure 2050 to 2250 PSI (144.1 to 158.2 kg/cm²)
Portable Cylinders Available

Power Take-Off

Type Clutch Hydraulically Operated
Rotation Clockwise
Spline Size 540 RPM 6 Splines 1-3/8 in. (34.9mm)Dia.
1000 RPM 21 Splines 1-3/8 in. (34.9mm) Dia.
Engine Speed 1900 RPM 540 or 1000 RPM Shaft Speed

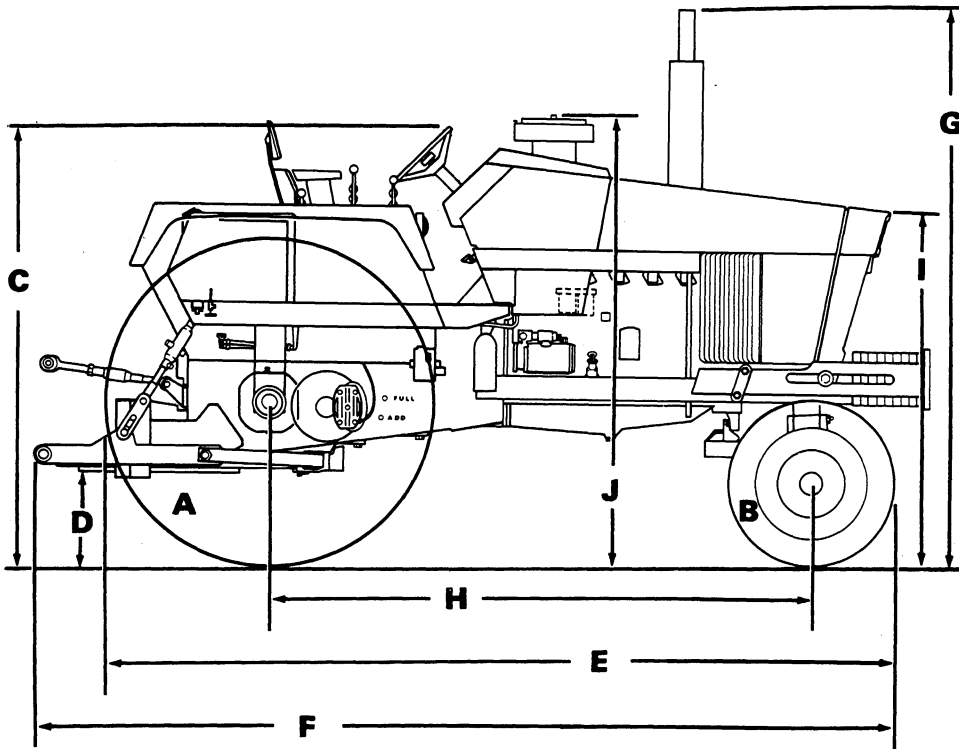
Draft-O-Matic System

Type of sensing Lower Link
Type Control Hand Lever
Type Valve 3 Positions - Raise - Hold - Lower
Type Draft Arms Swinging, with Manual Float Adjustment
Type Hitch 3 Point Category II

Drawbar

Standard or Yoke Type Full Swinging Roller Mounted, Will
Accommodate a 1-1/2 Inch (38.1mm) Dia. Pin.

APPROXIMATE OVERALL MEASUREMENTS



Model	Adjustable
A	20.8-38R1
B	10.00-16F2
C	87 INCH (2 209.8mm)
D	21 INCH (533.4mm)
E	160 INCH (4 064mm)

F	172 INCH (4 368.8mm)
G	114 INCH (2 895.6mm)
H	108 INCH (2 743.2mm)
I	72 INCH (1 828.8mm)
J	84 INCH (2 133.6mm)

APPROXIMATE TRAVEL SPEEDS IN MPH

Mechanical Range	Transmission Gear			
	1	2	3	4
1	1.9 mph (3.1 km/h)	2.8 mph (4.5 km/h)	3.9 mph (6.3 km/h)	4.8 mph (7.7 km/h)
2	6.0 mph (9.7 km/h)	8.5 mph (13.7 km/h)	12.0 mph (19.3 km/h)	15.0 mph (24.1 km/h)

APPROXIMATE WEIGHT

1175 Tractor 10,120 Pounds (4 590 kg).

TIRE AND WHEEL EQUIPMENT

Front

TIRE SIZE	TIRE PLY	RIM SIZE	TREAD TYPE	TIRE PRESSURE
7.50-16	8	550F-16	F2	52 PSI (3.7 kg/cm ²)
9.50-20	6	W7L-20	F2	32 PSI (2.2 kg/cm ²)
10.00-16	6	W8L-16	F2	28 PSI (1.9 kg/cm ²)
10.00-16	8	W8L-16	F2	40 PSI (2.8 kg/cm ²)
11.00-16	6	W8L-16	F2	28 PSI (1.9 kg/cm ²)
11.00-16	8	W8L-16	F1	36 PSI (2.5 kg/cm ²)

Rear

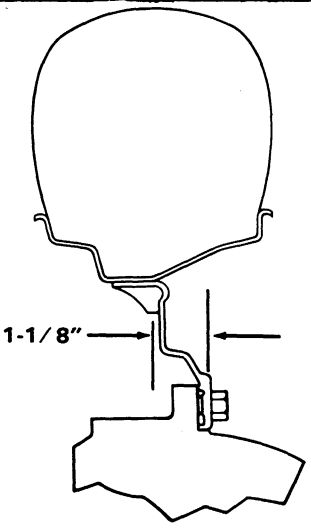
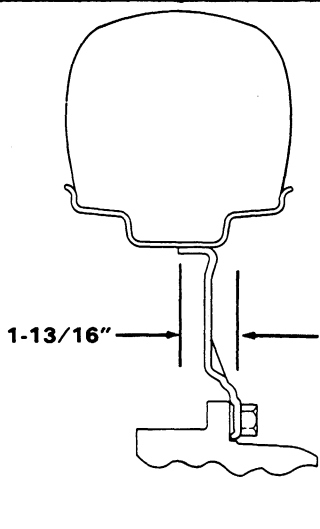
TIRE SIZE	TIRE PLY	RIM SIZE	TREAD TYPE	TIRE PRESSURE
23.1-34	8	DW20-34	R1 & R2	16 PSI (1.1 kg/cm ²)
15.5-38	10	W14L-38	R1 & R2	32 PSI (2.2 kg/cm ²)
18.4-38	6	W16L-38	R1 & R2	16 PSI (1.1 kg/cm ²)
18.4-38	8	W16L-38	R1 & R2	20 PSI (1.4 kg/cm ²)
20.8-38	8	W18L-38	R1 & R2	18 PSI (1.3 kg/cm ²)
20.8-38	10	W18L-38	R1 & R2	22 PSI (1.5 kg/cm ²)

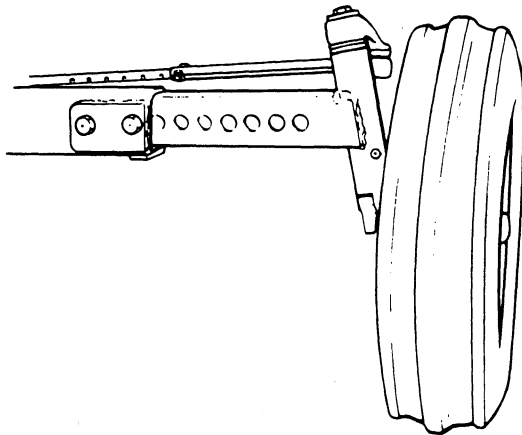
NOTE: Keep tires inflated to recommended pressures. Check pressures at least every 50 hours of operation or once a week, whichever occurs first. DO NOT reduce rear tire pressure to increase traction. When plowing, increase furrow wheel tire pressure 4 PSI (0.281 kg/cm²).

FRONT WHEEL TREAD SPACING (With Wheels Dished In Only)

ADJUSTABLE AXLE SPACING INCHES

NOTE: Axle spacing listings above are from the narrow setting, with increments of 4 inches (101.6mm) to the wide setting.

1-1/8 IN. (28.6mm) OFFSET WHEEL	1-13/16 IN. (46.0mm) OFFSET WHEEL
	
62-90 IN. (1 575-2 286mm)	61-89 IN. (1 549-2 261mm)

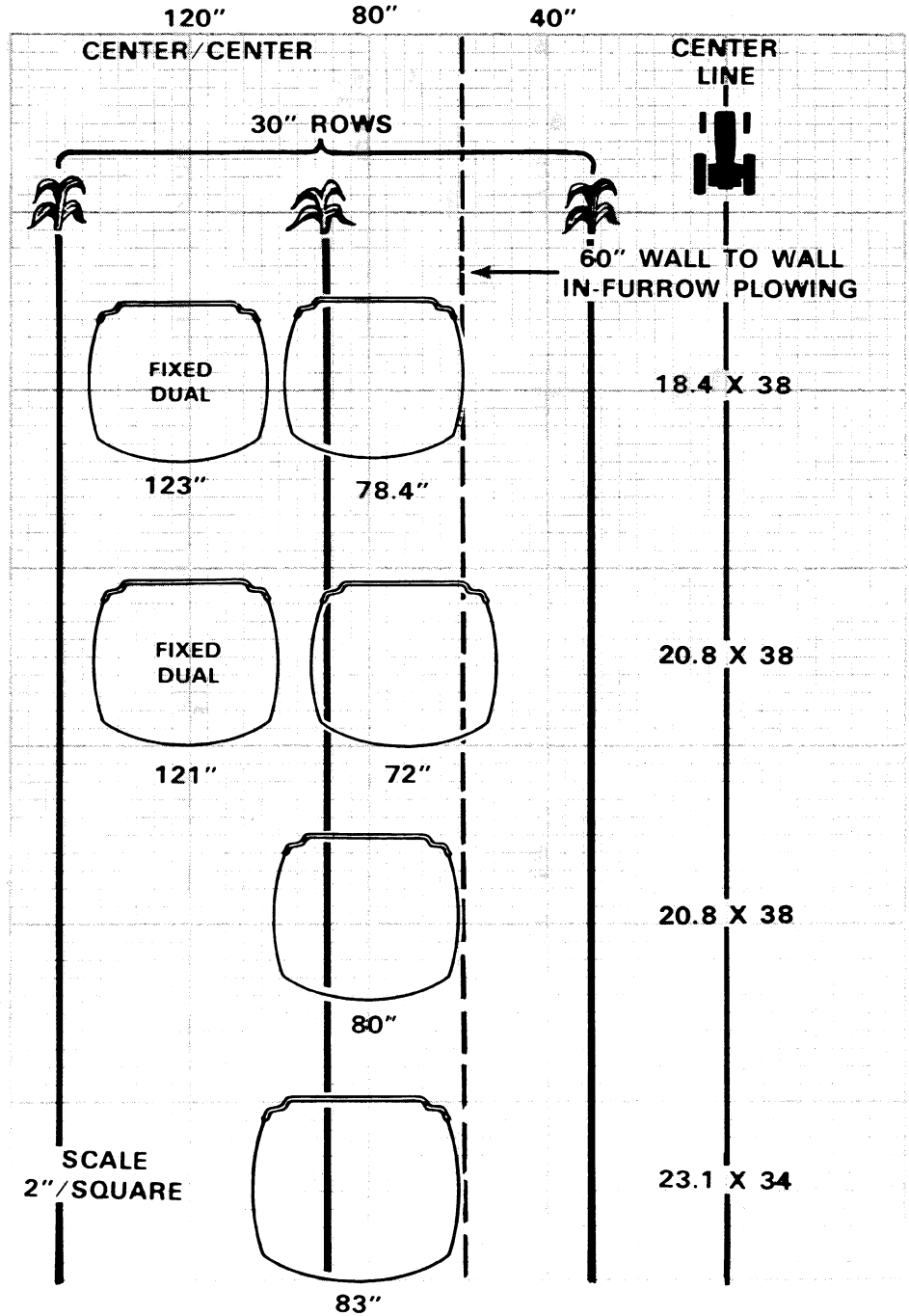


NOTE: When tightening the front wheel to hub bolts use the following torques.

For 9/16" bolts 85 to 100 ft. lbs. (11.76 for 13.83 m-kg)

For 5/8" bolts 115 to 130 ft. lbs. (15.9 to 17.98 m-kg)

FIXED STEEL WHEELS FIXED STEEL DUALS



Buy Now



Our support email:

ebooklibonline@outlook.com