

# 118 Tractor Operator's Manual

9-4371

Reprinted

**CASE**






*THIS SAFETY ALERT SYMBOL INDICATES IMPORTANT SAFETY MESSAGES IN THIS MANUAL. WHEN YOU SEE THIS SYMBOL, CAREFULLY READ THE MESSAGE THAT FOLLOWS AND BE ALERT TO THE POSSIBILITY OF PERSONAL INJURY OR DEATH.*

M171B

If Safety Decals on this machine use the words **Danger, Warning or Caution**, which are defined as follows:

- **DANGER:** Indicates an immediate hazardous situation which if not avoided, will result in death or serious injury. The color associated with Danger is RED.
- **WARNING:** Indicates an potentially hazardous situation which if not avoided, will result in serious injury. The color associated with Warning is ORANGE.
- **CAUTION:** Indicates an potentially hazardous situation which if not avoided, may result in minor or moderate injury. It may also be used to alert against unsafe practices. The color associated with Caution is YELLOW.

If Safety Decals on this machine are ISO two panel Pictorial, decals are defined as follows:

- The first panel indicates the nature of the hazard.
- The second panel indicates the appropriate avoidance of the hazard.
- Background color is YELLOW.
- Prohibition symbols such as   and  if used, are RED.



# WARNING

IMPROPER OPERATION OF THIS MACHINE CAN CAUSE INJURY OR DEATH. BEFORE USING THIS MACHINE, MAKE CERTAIN THAT EVERY OPERATOR:

- Is instructed in safe and proper use of the machine.
- Reads and understands the Manual(s) pertaining to the machine.
- Reads and understands ALL Safety Decals on the machine.
- Clears the area of other persons.
- Learns and practices safe use of machine controls in a safe, clear area before operating this machine on a job site.

It is your responsibility to observe pertinent laws and regulations and follow Case Corporation instructions on machine operation and maintenance.

## TO THE PURCHASER OF A CASE TRACTOR

The care you give your new Case Tractor will greatly determine the satisfaction and service life you will obtain from it. Use this manual as your guide. By observing the instructions and suggestions in this manual, your Case Tractor will serve you well for many years.

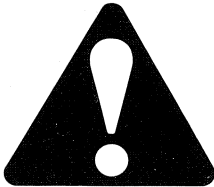
As an Authorized Case Dealer, we stock Genuine Case Parts, which are manufactured with the same precision and skill as the original equipment. Our factory trained staff is kept well informed on the best methods of servicing Case equipment and is ready and able to help you.

Should you require additional aid or information, contact us.

*Your Authorized Case Dealer*

### **IMPORTANT**

This Operator's Manual applies to Model 118 tractors.



LOOK FOR THIS SYMBOL  
TO POINT OUT IMPORTANT  
SAFETY PRECAUTIONS

To insure efficient and prompt service, please furnish us with the Model, Serial, Engine Model Numbers and Engine Specification Number of your Tractor in all correspondence or contacts.

CKFAA

PRICE \$.75

Printed in USA



Figure 1. Right Hand View of Case 118 Tractor

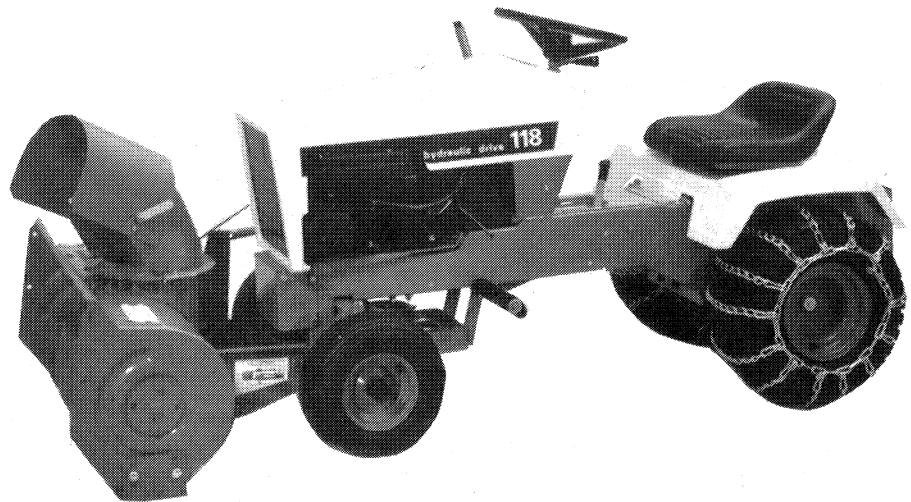


Figure 2. Left Hand View of Case 118 Tractor  
(With Snow Blower Attached)

## SERIAL NUMBER

When ordering parts from your Authorized Case Dealer and in all contacts or correspondence with your dealer relative to the tractor always specify the Serial, Model and Engine Numbers of your tractor.

The Tractor Model and Serial Numbers are stamped on the number plate located on the instrument panel, Figure 3. The Engine, Model and Serial Numbers are stamped on a plate fastened to the left side of the engine shroud, Figure 4.

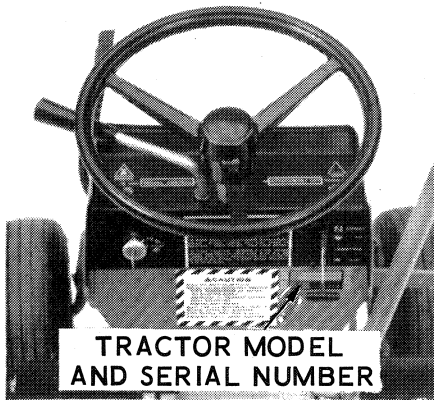


Figure 3

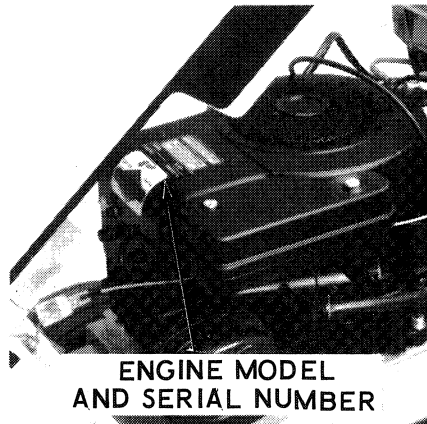


Figure 4

### **NOTE**

The terms "Right Hand" and "Left Hand" whenever used in this manual apply to the tractor when facing in the direction the tractor will move in forward operation.

For reference, fill in the Serial Number, Model Number and Engine Number of your tractor in the spaces provided below.

Tractor Model Number \_\_\_\_\_

Tractor Serial Number \_\_\_\_\_

Engine Model Number \_\_\_\_\_

Engine Serial Number \_\_\_\_\_

# gasoline engine

## SPECIFICATIONS

### General

Type ----- 079301 - Briggs & Stratton - Vertical Crankshaft  
Model ----- 190707  
Cycle ----- 4  
Cylinders ----- 1  
Cylinder Bore ----- 3 in.  
Stroke ----- 2-3/4"  
Piston Displacement ----- 19.44 cu. in.  
Horsepower ----- 8 @ 3600 R.P.M.  
Compression Ratio ----- 6.2 to 1  
Full Load Speed ----- 3500 R.P.M.  
No Load Speed ----- 3600 R.P.M.  
Idle Speed ----- 1750 R.P.M.  
Valve Clearance Cold (Intake) ----- .006  
Valve Clearance Cold (Exhaust) ----- .010 Rotator Keeper  
Torque (Ft. Lbs.) ----- 12.7 @ 2500 R.P.M.

### Piston and Connecting Rod

Piston ----- Chrome Plated  
Compression Rings ----- 2  
Oil Rings ----- 1  
Connecting Rod ----- Aluminum Alloy

### Fuel System

Carburetor ----- Large One/Piece Flo-Jet  
Fuel Strainer ----- Tank Screen  
Fuel Tank Capacity ----- 4 U.S. Quarts

### Ignition System

Breaker Point Gap ----- .020 in.  
Spark Plug ----- Prestolite 14-7N or equivalent  
Thread ----- 14 MM  
Gap ----- .030  
Plug Wrench Size ----- 3/4" Deep-Well Socket

### Cooling System

Flywheel Blower ----- Forces air inside baffles  
directing air around finned  
cylinder and head area.



## Overall Measurements

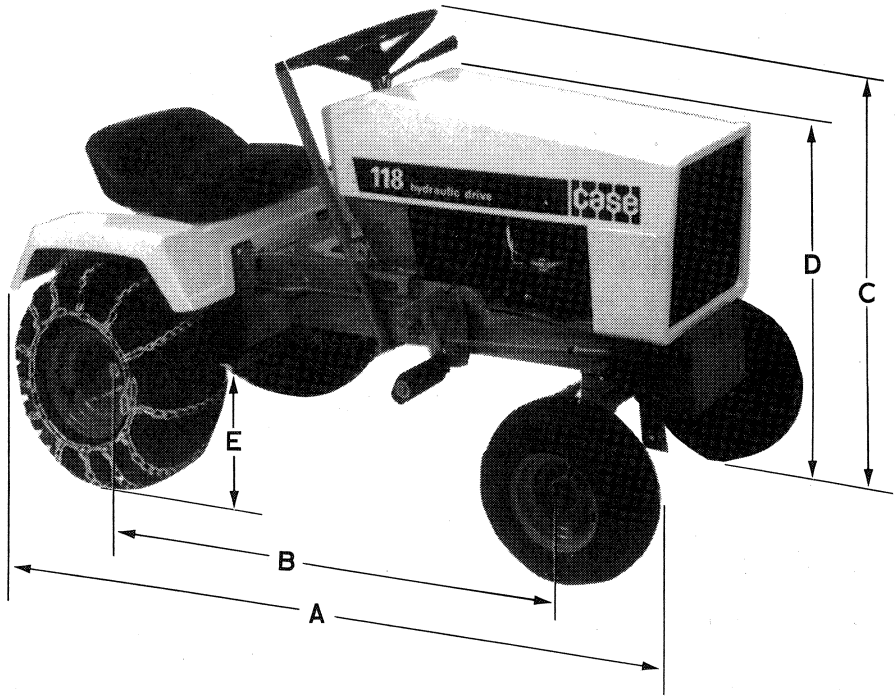


Figure 5

A	Overall Length	57-3/16"
B	Wheel Base	42"
C	Overall Height	37-7/8"
D	Hood Height - Rear	31-1/2"
E	Minimum Ground Clearance at Gear Case	6-5/8"
	Rear Wheel Tread	23-1/4"
	Front Wheel Tread	23-3/8"
	Overall Width	32-1/4"
	Shipping Weight	305 lbs.



**Buy Now**



Our support email:

[ebooklibonline@outlook.com](mailto:ebooklibonline@outlook.com)