

**David Brown
885, 885G &
885 Narrow Tractors**

Operators Manual

9-5216

Reprinted





*This symbol means **ATTENTION! BECOME ALERT! YOUR SAFETY IS INVOLVED.** The message that follows the symbol contains important information about your safety. Carefully read the message. Make sure you fully understand the causes of possible injury or death.*

SB001

IF THIS MACHINE IS USED BY AN EMPLOYEE, IS LOANED, OR IS RENTED, MAKE SURE THAT THE OPERATOR UNDERSTANDS THE TWO INSTRUCTIONS BELOW.

BEFORE THE OPERATOR STARTS THE ENGINE:

1. GIVE INSTRUCTIONS TO THE OPERATOR ON SAFE AND CORRECT USE OF THE MACHINE.
2. MAKE SURE THE OPERATOR READS AND UNDERSTANDS THE OPERATOR'S MANUAL FOR THIS MACHINE.



IMPROPER OPERATION OF THIS MACHINE CAN CAUSE INJURY OR DEATH.

BEFORE STARTING THE ENGINE, DO THE FOLLOWING:

1. READ THE OPERATOR'S MANUAL.
2. READ ALL SAFETY DECALS ON THE MACHINE.
3. CLEAR THE AREA OF OTHER PERSONS.

LEARN AND PRACTICE SAFE USE OF MACHINE CONTROLS IN A SAFE, CLEAR AREA BEFORE YOU OPERATE THIS MACHINE ON A JOB SITE.

It is your responsibility to observe pertinent laws and regulations and to follow manufacturer's instructions on machine operation and maintenance.

See your Authorized Case dealer for additional operator's manuals, parts catalogs, and service manuals.



DAVID BROWN
Instruction Book
885, 885G and 885 Narrow
Tractors

David Brown Tractors Limited
Meltham · Huddersfield · England · HD7 3AR

Publication 9-5216NA March 1974

SAFETY POINTS

Always lock the two foot brake pedals together when running on the highway.

Always ensure the PTO is set to low ratio for implements designed to run at 540 rev/min. Running them faster may cause a dangerous mechanical failure.

Always ensure the PTO (and Belt Pulley when fitted) is adequately guarded.

Always remove loose clothing when working near moving parts of the tractor, engine and implements, or ensure that it is adequately fastened or tied up.

Always remove the ignition/starter key from the tractor when leaving it unattended, especially where children have access.

Always operate the steering and driving controls with care, for example:—

Don't swerve or turn sharply at speed.

Don't let the clutch in suddenly going up hill or the tractor may rear up.

Don't brake fiercely, especially going backwards down hill.

Always take extra care on steeply sloping ground. Move cautiously, as the sudden swing of a heavy implement, or pull of a trailer, may cause trouble.

Always make sure before turning that there is room for any mounted implement which will swing *outwards* at the rear.

Always hitch trailers to the approved drawbar or pick-up hitch which is below the centre line of the rear axle. Do not hitch above the centre line.

Always tow the tractor carefully. When towing by rope with a dead engine, power steering will be inoperative and the steering will be very difficult to turn.



IMPORTANT DON'TS



Do Not carry passengers on the linkages or on the tractor, except in an approved passenger seat.

Do Not drill into the safety frame or cab.

Note: Any damaged parts should be replaced immediately with new parts. Bent parts should not be straightened but replaced and no welding should be attempted on the safety frame. Bolts when replaced, must be of the correct tensile strength. After any accident to a safety frame it is advisable to report this to your local safety officer.

Do Not lift the tractor by the cab lifting hooks. These are designed only for removing a cab from the tractor.

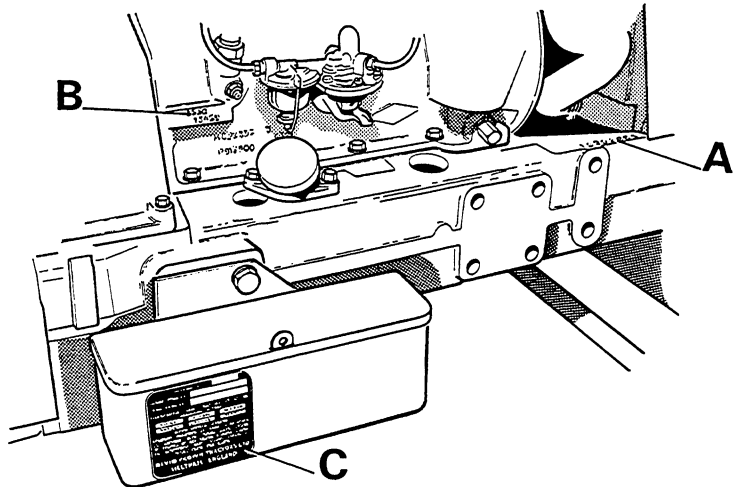
INTRODUCTION

We recommend that even the most experienced tractor user reads the Operation and Regular Maintenance sections of this book *before* commencing operations with his new tractor. The various tasks can in fact be performed by any but the complete novice, but this book details the easiest, quickest and most efficient ways of carrying them out.

The most important aspect, however, is *safety*, because a tractor can be a dangerous machine if handled without due caution. Knowledge gained beforehand from this book can prevent accidents.

The 885 tractor is the culmination of many years of development and rigorous field testing. The 3-cylinder diesel engine and the Selectamatic® hydraulics have previously obtained remarkably successful results in field operation and in official tests. Subsequent improvements in these and other features have made the 885 an exceptionally reliable and efficient tractor. Finally, the incorporation of hand and foot throttle controls (except on the narrow tractor) and of the David Brown synchromesh gearbox, makes it as easy to handle as a family car.

It is a tractor which will amply repay the user provided that the simple maintenance routines are carried out regularly.



Tractor number/Engine Number/Identification Plate

When ordering parts or with any query always quote the full prefix and serial numbers as follows:

Tractor letters and numbers as stamped on right-hand edge of the chassis front extension at A and on the identification plate C, e.g. 885/1/620001.

Engine Numbers as stamped on the flat vertical surface on the right-hand side of the cylinder block at B and on the identification plate C, e.g. 355011/18243.

Tractor Serial No.....

Engine Serial No.....

Tractor Registration No.....

CONTENTS

	Page
Safety Points	2
Take special care of your new tractor	10
First service (50/100 hours)	10

SECTION 1 DESCRIPTION AND OPERATION — GENERAL

INSTRUMENT PANEL	11
Engine Oil Warning Light	12
Charge Warning Light	12
Transmission Filter Warning Light	12
Light Switch	12
Engine Speed Indicator	13
Direction Indicator	14
Hazard Warning Switch	14
Engine Stop Control	14
LEVERS AND PEDALS	14
Use of the throttles	14
Brakes	16
Clutch	17
Differential Lock	18
Synchromesh transmission	18
Gear selection	19
STARTING AND STOPPING ENGINE	21
Starting the Gasoline Engine	21
Stopping the Gasoline Engine	21
Starting the Diesel Engine	22
Starting in cold weather	23
Starting in extreme cold conditions	23
Stopping the Diesel Engine	23
Stopping the Tractor	24
Super Comfort Suspension seat	24
De-Luxe seat	24

	Page
SECTION 2 DESCRIPTION AND OPERATION — SELECTAMATIC HYDRAULIC SYSTEM	
INTRODUCTION	25
Trailed implements	25
Selector Dial Pointer	26
Hand Lever	26
Sensing Unit	26
Finger Guides	27
Lowering Control	27
Dump Valve	27
3-way Valve	28
Lift Latch	28
OPERATING with DEPTH CONTROL	29
OPERATING with DEPTH WHEEL (TCU)	30
OPERATING with HEIGHT CONTROL	32
OPERATING EXTERNAL EQUIPMENT VIA THE 3-WAY VALVE	33
Catch Unit	37
OPERATING EXTERNAL EQUIPMENT VIA LIVE DOUBLE-ACTING CONTROL VALVES	38
 SECTION 3 — ADJUSTMENTS AND SETTINGS	
LINKAGE SETTINGS	41
Stabilisers	42
Drawbar	45
Pick-up hitch	47
WHEELS AND AXLES	50
Track settings for ploughing	50
Rear track adjustment — standard	50
Front track adjustment — standard	52
Rear track adjustment — narrow	53
Front track adjustment — narrow	54
Tyre Pressures	55
Ballast	55
POWER TAKE OFF	56
BELT PULLEY	58

Buy Now



Our support email:

ebooklibonline@outlook.com