

**SUPPLEMENT TO
OPERATOR'S INSTRUCTION MANUAL**

**430-530-630
SERIES
DIESEL
WHEEL
TRACTORS**



9-74891

Reprinted

TABLE OF CONTENTS

SERIAL NUMBERS	3
GENERAL SPECIFICATIONS	4
Engine	4
Fuel System	5
Cooling System	5
Starting and Lighting System	5
Standard Mechanical Drive	5
Case-O-Matic Drive	6
Transmission	6
Brakes	6
Power Take-Off	6
Capacities	6
FUEL SPECIFICATIONS	7
FUEL CONDITIONER	8
LUBRICATION	9
Engine Lubrication	10
Crankcase Oil Change	11
Engine Oil Filter	12
OPERATING INSTRUCTIONS	13
Pre-Starting Check List	13
Run-In Procedure	14
Starting Procedure	15
Cold Weather Operation	16,17
Coolant Heater	18
PREVENTIVE MAINTENANCE	19
Fuel System	19
Replacing Fuel Filters	20
Fuel Tank Shut-Off and Water Trap	21
Thermostat Replacement	21
Air Cleaner	22
Electrical System (430 Series)	23
Electrical System (530 and 630 Series)	24

SERIAL NUMBER

When ordering parts from your Authorized Case Dealer and in all contacts or correspondence with your dealer relative to the Tractor, always specify the Serial, Model and Engine Number of your Tractor.

The Model and Serial Numbers are stamped on the number plate located on the right hand side of the instrument panel. The Engine Number is stamped on a plate fastened to the right hand side of the engine below the starting motor, Figure 1.

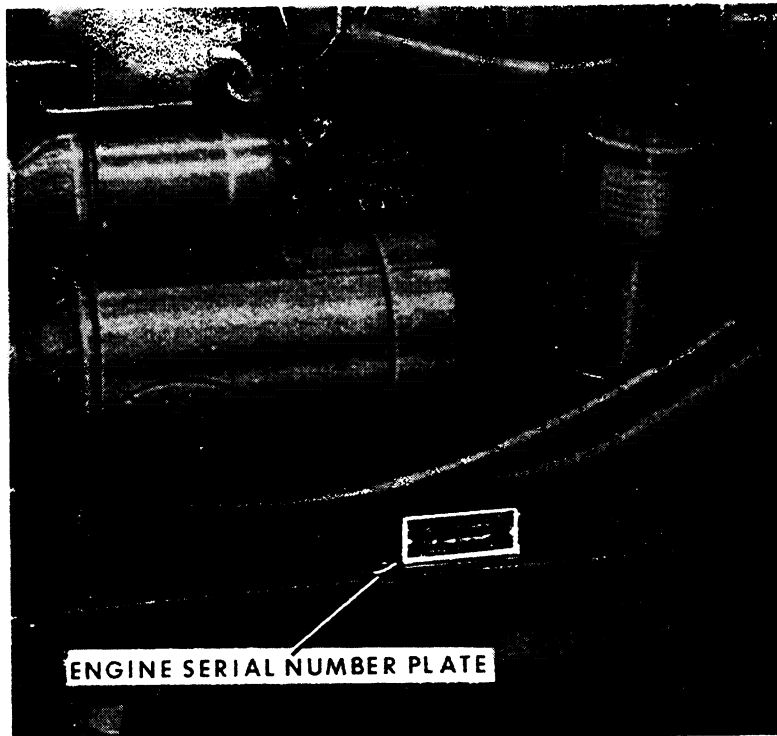


Figure 1

NOTE The terms "Right Hand" and "Left Hand" whenever used in this manual apply to the tractor when facing in the direction the tractor will move in forward operation.

For reference, fill in the Serial Number, Model Number and Engine Number of your Case Tractor in the spaces provided below.

Model Number _____

Engine Number _____

Serial Number _____

SPECIFICATIONS

Type ----- "Case" Open Chamber Com-
 bustion - 4 Cyl. - Valve in Head.
 Firing Order ----- 1-3-4-2
 Cylinder Bore ----- 3-13/16"
 Stroke ----- 4-1/8"
 Piston Displacement ----- 188 Cu. In.
 Compression Ratio ----- 17.5 to 1
 Valve Clearance ----- .014 (Cold)
 Cylinder Sleeves ----- Wet Type Replaceable
 Air Cleaner ----- Oil Bath Type
 Cold Weather Starting Aid ----- Electric Manifold Type
 Fuel Recommendation ----- No. 2 Diesel Fuel

Engine Speed (RPM)

	430	530	630
Full Load Speed (Standard Clutch)	1750	1900	2000
Full Load Speed (Case-O-Matic)		2100	2250
No Load Speed (Standard Clutch)	1900	2050	2150
No Load Speed (Case-O-Matic)		2250	2400
Engine Idle Speed	600	600	600

Pistons and Rods

Compression Rings ----- 2
 Oil Control Rings ----- 1
 Piston Pins ----- Full Floating Type
 Piston Material ----- Aluminum Alloy
 Connecting Rod Bearings ----- Replaceable Precision Steel
 Back Copper - Lead Alloy Liners.

Main Bearings

Number of Main Bearings ----- 5
 Type Bearings ----- Replaceable Precision Steel
 Back Copper - Lead Alloy Liners.

Engine Lubricating System

Oil Pressure ----- 50 to 60 Lbs. at 2000 RPM
 Type System ----- Gear Type Pump With Float-
 Intake Screen.
 Oil Filter ----- Full Flow Replaceable

Buy Now



Our support email:

ebooklibonline@outlook.com