

DX480LCA

DX500LCA

Shop Manual

950106-00411E

Serial Number 10001 and Up

DOOSAN reserves the right to improve our products in a continuing process to provide the best possible product to the market place. These improvements can be implemented at any time with no obligation to change materials on previously sold products. It is recommended that consumers periodically contact their distributors for recent documentation on purchased equipment.

This documentation may include attachments and optional equipment that is not available in your machine's package. Please call your distributor for additional items that you may require.

Illustrations used throughout this manual are used only as a representation of the actual piece of equipment, and may vary from the actual item.

Table of Contents

Safety

Track Excavator Safety.....	SP002025
-----------------------------	----------

Specifications

Specification for DX480LCA / DX500LCA	SP002887
---	----------

General Maintenance

General Maintenance Instructions.....	SP002454
Standard Torques.....	SP002404

Upper Structure

Cabin	SP002904
Counterweight.....	SP002902
Fuel Tank.....	SP002905
Fuel Transfer Pump (Opt).....	SP000021
Swing Bearing.....	SP001856

Lower Structure and Chassis

Track Assembly	SP002561
----------------------	----------

Engine and Drive Train

Drive Coupling (Main Pump).....	SP000026
---------------------------------	----------

Hydraulics

Hydraulic System Troubleshooting, Testing and Adjustment	SP002973
Accumulator.....	SP000028
Center Joint (Swivel).....	SP002545
Cylinders.....	SP000193
Swing Device	SP002565

Travel Device.....	SP002566
Main Pump.....	SP000186
Main Control Valve	SP000187
Remote Control Valve (Work Lever / Joystick)	SP002974
Travel Control Valve (with Damper).....	SP002906
Solenoid Valve Assembly	SP001622
Breaker EPPR Valve (Opt)	SP000192
Hydraulic Schematic.....	SP002957

Electrical System

Electrical System	SP002453
Electrical Schematic	SP002031

Attachments

Boom and Arm.....	SP001851
Bucket.....	SP002958

Track Excavator Safety

Edition 2

SAFETY INSTRUCTIONS



WARNING

AVOID DEATH OR SERIOUS INJURY

Instructions are necessary before operating or servicing machine. Read and understand the Operation and Maintenance Manual and signs (decals) on machine. Follow warnings and instructions in the manuals when making repairs, adjustments or servicing. Check for correct function after adjustments repairs or service. Untrained operators and failure to follow instructions can cause death or serious injury.

APPLICABLE MODELS

The contents of this section apply to the following models and serial number ranges.

MODEL	SERIAL NUMBER RANGE
DX225LCA	5167 and Up
DX300LCA	5001 and Up
DX340LCA	5001 and Up
DX420LCA	10001 and Up
DX480LCA	10001 and Up
DX500LCA	10001 and Up

TO THE OPERATOR OF A DOOSAN EXCAVATOR



AVOID DEATH

Unsafe use of the excavator could lead to serious injury or death. Operating procedures, maintenance and equipment practices or traveling or shipping methods that do not follow the safety guidelines on the following pages could cause serious, potentially fatal injuries or extensive damage to the machine or nearby property.

Please respect the importance of taking responsibility for your own safety, and that of other people who may be affected by your actions.

The safety information on the following pages is organized into the following sections:

1. "General Safety Essentials" on page 1-9
2. "Location of Safety Labels" on page 1-10
3. "Summary of Safety Precautions for Lifting in Digging Mode" on page 1-11
4. "Unauthorized Modifications" on page 1-12
5. "General Hazard Information" on page 1-12
6. "Before Starting Engine" on page 1-21
7. "Machine Operation" on page 1-24
8. "Maintenance" on page 1-31
9. "Battery" on page 1-39
10. "Towing" on page 1-41
11. "Shipping and Transportation" on page 1-42
12. "Lifting With Sling" on page 1-42



WARNING

AVOID DEATH OR SERIOUS INJURY

Improper operation and maintenance of this machine can be hazardous and could result in serious injury or death.

Operator and maintenance personnel should read this manual thoroughly before beginning operation or maintenance.

Keep this manual in the storage compartment to the rear of the operator's seat, and have all personnel involved in working on the machine read the manual periodically.

Some actions involved in operation and maintenance of the machine can cause a serious accident, if they are not done in a manner described in this manual.

The procedures and precautions given in this manual apply only to intended uses of the machine.

If you use your machine for any unintended uses that are not specifically prohibited, you must be sure that it is safe for any others. In no event should you or others engage in prohibited uses or actions as described in this manual.

DOOSAN delivers machines that comply with all applicable regulations and standards of the country to which it has been sent. If this machine has been purchased in another country or purchased from someone in another country, it may lack certain safety devices and specifications that are necessary for use in your country. If there is any question about whether your product complies with the applicable standards and regulations of your country, consult *DOOSAN* or your *DOOSAN* distributor before operating the machine.



SAFETY ALERT SYMBOL



Be Prepared - Get to Know All Operating and Safety Instructions.

This is the Safety Alert Symbol. Wherever it appears in this manual or on safety signs on the machine you should be alert to the potential for personal injury or accidents. Always observe safety precautions and follow recommended procedures.

Learn Signal Words Used with Safety Alert Symbol

The words "**CAUTION**," "**WARNING**," and "**DANGER**" used throughout this manual and on decals on the machine indicate degree of risk of hazards or unsafe practices. All three degrees of risk indicate that safety is involved. Observe precautions indicated whenever you see the Safety Alert "Triangle," no matter which signal word appears next to the "Exclamation Point" symbol.

CAUTION

This word is used on safety messages and safety labels and indicates potential of a hazardous situation that, if not avoided, could result in minor or moderate injury. It may also be used to alert against a generally unsafe practice.

WARNING

This word is used on safety messages and safety labels and indicates potential threat of a hazardous situation that, if not avoided, could result in serious injury or death. It may also be used to alert against highly unsafe practice.

DANGER

This word is used on safety messages and safety labels and indicates an imminent hazard of a situation that, if not avoided, is very likely to cause death or extremely serious injury. It may also be used to alert against equipment that may detonate or explode if handled or treated carelessly.

Safety precautions are described in SAFETY from page -10 on.

DOOSAN cannot predict every circumstance that might involve a potential hazard in operation and maintenance. Therefore the safety messages in this manual and on the machine may not include all possible safety precautions. If any procedures or actions not specifically recommended or allowed in this manual are used, you must be sure that you and others can do such procedures and actions safely and without damaging the machine. If you are unsure about the safety of any procedures, contact a *DOOSAN* distributor.

GENERAL SAFETY ESSENTIALS

Accessory Applications

The excavator has been primarily designed for moving earth with a bucket. For use as a grapple or for other object handling, contact *DOOSAN* for proper installation and application. Lifting-work applications (unless restricted or prohibited by local regulations) are permitted in approved lift configuration, to rated capacity only, with no side-loading. DO NOT use the machine for activities for which it was not intended. DO NOT use the bucket for lifting work, unless lift slings are used in the approved configuration.

Use of an accessory hydraulic hammer (breaker), work in rough terrain, demolition applications or other hazardous operation may require installation of additional protective structures to safeguard the operator.

Lifting Capacity Rating Configuration

Lifting capacity ratings that are printed at the end of this safety section are based on the machine being level, on a firm supporting surface, with hooks and slings attached in approved configuration. Loads must be balanced and supported evenly. Use tag lines to keep the load steady if wind conditions and large surface area are a problem. Work crew hand signals, individual tasks and safe procedures should all be universally understood before the lift is made.

IMPORTANT

Before using the excavator to make lifts check municipal and regional regulations or statutes that could apply. Governing ordinances may require that all heavy lifting be done with single purpose equipment specifically designed for making lifts, or other local restrictions may apply. Making heavy lifts with a general purpose excavator that can be used for digging, loading, grading or other work may be expressly forbidden by a regional injunction or other legal prohibition. Always follow all of the other instructions, guidelines and restrictions for Safe Lifting in the Operation and Maintenance Manuals.

Track Assembly

Edition 1

TRACK TENSION



AVOID DEATH OR SERIOUS INJURY

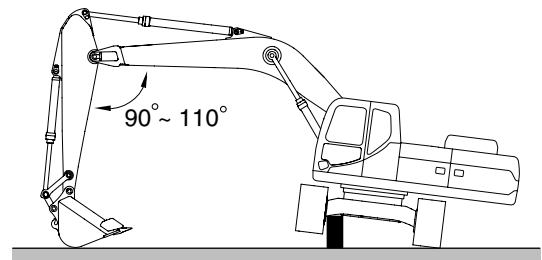
Measuring track tension requires two people. One person must be in the operator's seat, operating the controls while the other person makes dimensional checks. Block frame to make sure the machine won't move or shift position during service. Warm up the engine to prevent stalls, park the excavator in an area that provides level, uniform ground support and/or use support blocks when necessary.

The track adjusting mechanism is under very high-pressure. NEVER release grease pressure too fast. The track tension grease valve should never be loosened more than one (1) complete turn from the fully tightened down position. Bleed off grease pressure slowly. Keep your body away from the valve always. Always wear eye and face protection when adjusting track tension.

Track shoe link pins and bushings wear with normal usage, reducing track tension. Periodic adjustment is necessary to compensate for wear and it may also be required by working conditions.

1. Track tension is checked by jacking up one side of the excavator. See Figure 1. Place blocking under frame while taking measurement.

Turn the track backward by 1 - 2 turns.



FG018383

Figure 1

2. Measuring the distance (A, Figure 2) between the bottom of the side frame and the top of the lowest crawler shoe. Recommended tension for operation over most types of terrain is distance "B" in below table.

NOTE: Clean off the tracks before checking clearance for accurate measurements.

3. Too little sag in the crawler track (less than clearance distance "B" in below table) can cause excessive component wear. The recommended adjustment can also be too tight causing accelerated stress and wear if ground conditions are wet, marshy or muddy.

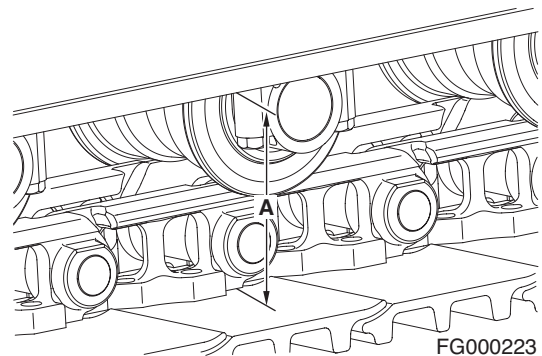


Figure 2

4. The increased clearance recommended for muddy, sandy or snowy ground conditions is between distance "C" in the below table.

Terrain Type	Recommended Distance "A"
Normal "B"	380 - 410 mm (14.96 - 16.14 in)
Muddy, Sandy or Snowy "C"	410 - 460 mm (16.14 - 18.11 in)



WARNING

AVOID DEATH OR SERIOUS INJURY

The track adjusting mechanism is under very high-pressure. NEVER release grease pressure too fast. The track tension grease valve should never be loosened more than one (1) complete turn from the fully tightened down position. Bleed off grease pressure slowly. Keep your body away from the valve always. Always wear eye and face protection when adjusting track tension.

5. Track tension adjustments are made through the grease fitting (1, Figure 3) in the middle of each side frame. Adding grease increases the length of an adjustment cylinder (2). Extending the adjustment cylinder increases the pressure on the tension spring pushing the track idler wheel outward.
6. If there is not enough slack or clearance in the tracks and the adjustment is too tight, the idler wheel and adjusting cylinder can be retracted by bleeding off grease through hole in adjustment cylinder (2, Figure 3).

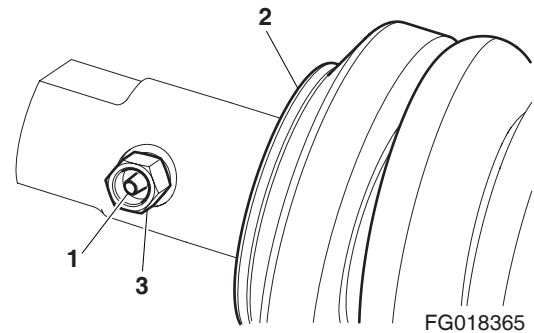


Figure 3

CLEANING AND INSPECTION (WEAR LIMITS AND TOLERANCES)



CAUTION

AVOID INJURY

Refer to "Welding Precautions and Guidelines" information in "General Maintenance Procedures" section for general recommendations and specific safety precautions, before starting any lower travel frame component rebuilding procedure.

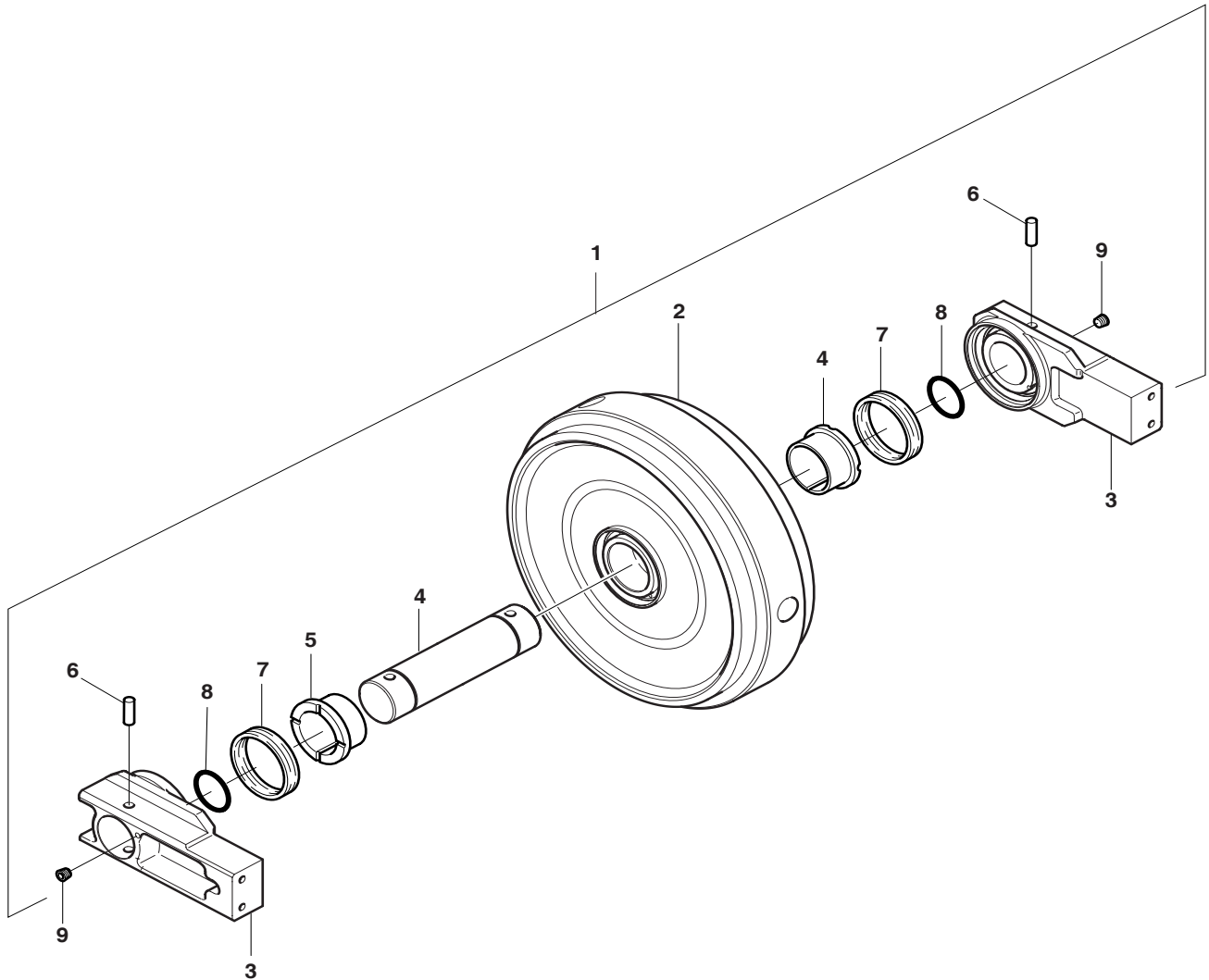
The tables that follow provide factory specified dimensional limits (as new condition, recommended service and replacement limit) for lower travel frame components.

Recommended maintenance to **replace** most listed components requires welding on additional material and grinding off excess. Some components must be replaced before the service limit is exceeded or no maintenance or renewal is possible.

Compare the values in the tables with dimensions and profiles shown in the adjacent figures.

FRONT IDLER ROLLER

Parts List



FG003913

Figure 15

Reference Number	Description
1	Idler Assembly
2	Idler
3	Bearing
4	Shaft
5	Bushing

Reference Number	Description
6	Pin
7	Floating Seal
8	O-ring
9	Plug

Buy Now



Our support email:

ebooklibonline@outlook.com