



Shop Manual

DX140LCR-3 Excavator

Serial Number 1001 and Up

DOOSAN and the DOOSAN logo are registered trademarks of DOOSAN Corporation in the United States and various other countries around the world.



950106-01021E

December 2012

Table of Contents

Safety

Track Excavator Maintenance Safety	SP002907
--	----------

Specifications

Specifications for DX140LCR-3	SP002908
-------------------------------------	----------

General Maintenance

General Maintenance Instructions	SP002454
Standard Torques	SP002404

Upper Structure

Cabin	SP002909
Counterweight.....	SP002910
Fuel Tank.....	SP002911
Fuel Transfer Pump (Option)	SP002912
Swing Bearing.....	SP002913
Swing Reduction Gear.....	SP002526

Lower Structure and Chassis

Track Assembly	SP002914
----------------------	----------

Engine and Drivetrain

QSB4.5 Engine	SP002915
Drive Coupling (Main Pump).....	SP002931

Hydraulics

Hydraulic System Troubleshooting, Testing and Adjustment	SP002916
Accumulator.....	SP002455
Center Joint (Swivel).....	SP002917

Cylinders.....	SP002918
Swing Motor.....	SP002919
Travel Device.....	SP002920
Main Pump.....	SP002930
Gear Pump	SP002500
Main Control Valve	SP002528
Remote Control Valve (Work Lever / Joystick)	SP002921
Travel Control Valve (with Damper).....	SP002922
Solenoid Valve Assembly	SP002923
Breaker EPPR Valve (Option)	SP002458
Hydraulic Schematic (DX140LCR-3)	SP002924

Electrical System

Electrical System	SP002925
Electrical Schematic	SP002926

Attachments

Boom and Arm.....	SP002927
Bucket.....	SP002506

Track Excavator Maintenance Safety

Edition 1

SAFETY INSTRUCTIONS



WARNING

AVOID DEATH OR SERIOUS INJURY

Instructions are necessary before operating or servicing machine. Read and understand the Operation & Maintenance Manual and signs (decals) on machine. Follow warnings and instructions in the manuals when making repairs, adjustments or servicing. Check for correct function after adjustments repairs or service. Untrained operators and failure to follow instructions can cause death or serious injury.

APPLICABLE MODELS

The contents of this section apply to the following models and serial number ranges.

MODEL	SERIAL NUMBER RANGE
DX140LCR-3	1001 and Up

SAFETY MESSAGES

Safety messages and safety decals included in this manual and on the machine provide instructions how to operate, service and maintain the machine. Safety messages and safety decals indicate potential hazards and describe safety precautions required to avoid hazards. Operator and maintenance personnel should read and understand these safety messages and decals before beginning operation or maintenance.

SAFETY ALERT SYMBOL

Be Prepared - Get to Know All Operating and Safety Instructions.

This is a Safety Alert Symbol. Wherever it appears in this manual or on safety decals on the machine, you must be alert to the potential for personal injury or accidents.

Always observe safety precautions and follow recommended procedures.

Signal Words

The signal words "DANGER", "WARNING", "CAUTION" are used throughout safety messages and safety decals in this manual or on the machine. They indicate an existence of, and the relative seriousness of, a hazard. All three indicate that a safety risk is involved. Observe the precautions indicated whenever a Safety Alert Symbol is present, no matter which signal word appears next to it.

DANGER

DANGER - This signal word is used on safety messages and safety labels and indicates an imminently hazardous situation which, if not avoided, will result in death or serious injury.

WARNING

WARNING - This signal word is used on safety messages and safety labels and indicates a potentially hazardous situation which, if not avoided, could result in death or serious injury.



CAUTION

CAUTION - This signal word is used on safety messages and safety labels and indicates a potentially hazardous situation which, if not avoided, could result in minor or moderate injury.

Other Signal Words

In addition to safety signal words, the following signal words are used to indicate proper and effective use of machine.

IMPORTANT

This signal word identifies procedures which must be followed to avoid damage to machine.

The word "NOTE" identifies information for effective use.

SAFETY DECALS

Location of safety labels (decals) can vary from unit to unit.

Refer to appropriate Operation & Maintenance Manual, and parts manual for your unit.

Always replace damaged or faded decals.

GENERAL

Safe Operation is Operator's Responsibility

Only trained and authorized personnel should operate and maintain the machine.

Follow all safety rules, regulations and instructions when operating or performing maintenance on machine.

- Do not operate machine if you are under the influence of drugs or alcohol. An operator who is taking prescription drugs must get medical advice to determine if he or she can safely operate a machine.
- When working with other personnel on a work site, be sure that all personnel know nature of work and understand all hand signals that are to be used.
- Be sure that all guards and shields are installed in their proper location. Have guards and shields repaired or replaced immediately if damaged.
- Be sure that you understand the use and maintenance of all safety features such as safety lock lever and seat belt. Use them properly.
- Never remove, modify or disable any safety features. Always keep them in good operating condition.
- Always check for and know the location of underground and overhead utility lines before excavating.
- Failure to use and maintain safety features according to instructions in this manual, Safety Manual and Shop Manual can result in death or serious injury.

Know Your Machine

Know how to operate your machine. Know the purpose of all controls, gauges, signals, indicators and monitor displays. Know the rated load capacity, speed range, braking and steering characteristics, turning radius and operating clearances. Keep in mind that rain, snow, ice, loose gravel, soft ground, slopes etc., can change operating capabilities of your machine.

Swing Reduction Gear

Edition 2

SAFETY INSTRUCTIONS



WARNING

AVOID DEATH OR SERIOUS INJURY

Instructions are necessary before operating or servicing machine. Read and understand the Operation & Maintenance Manual and signs (decals) on machine. Follow warnings and instructions in the manuals when making repairs, adjustments or servicing. Check for correct function after adjustments repairs or service. Untrained operators and failure to follow instructions can cause death or serious injury.

APPLICABLE MODELS

The contents of this section apply to the following models and serial number ranges.

MODEL	SERIAL NUMBER RANGE
DX140LC-3	1001 and Up, 50001 and Up
DX140LCR-3	1001 and Up

GENERAL DESCRIPTION

Theory of Operation

The swing motor final drive is a two-stage planetary gearbox with two planet gears, two sun gears and two-stage output reduction. The planetary gear engages the ring gear. The pinion gear is connected to the output shaft and spline.

The final drive reduces swing motor rpm to increase swing motor output torque. The available maximum swing speed provides a fast turning rate for efficient, rapid work cycling with more than adequate power for good acceleration.

REASSEMBLY

Parts List

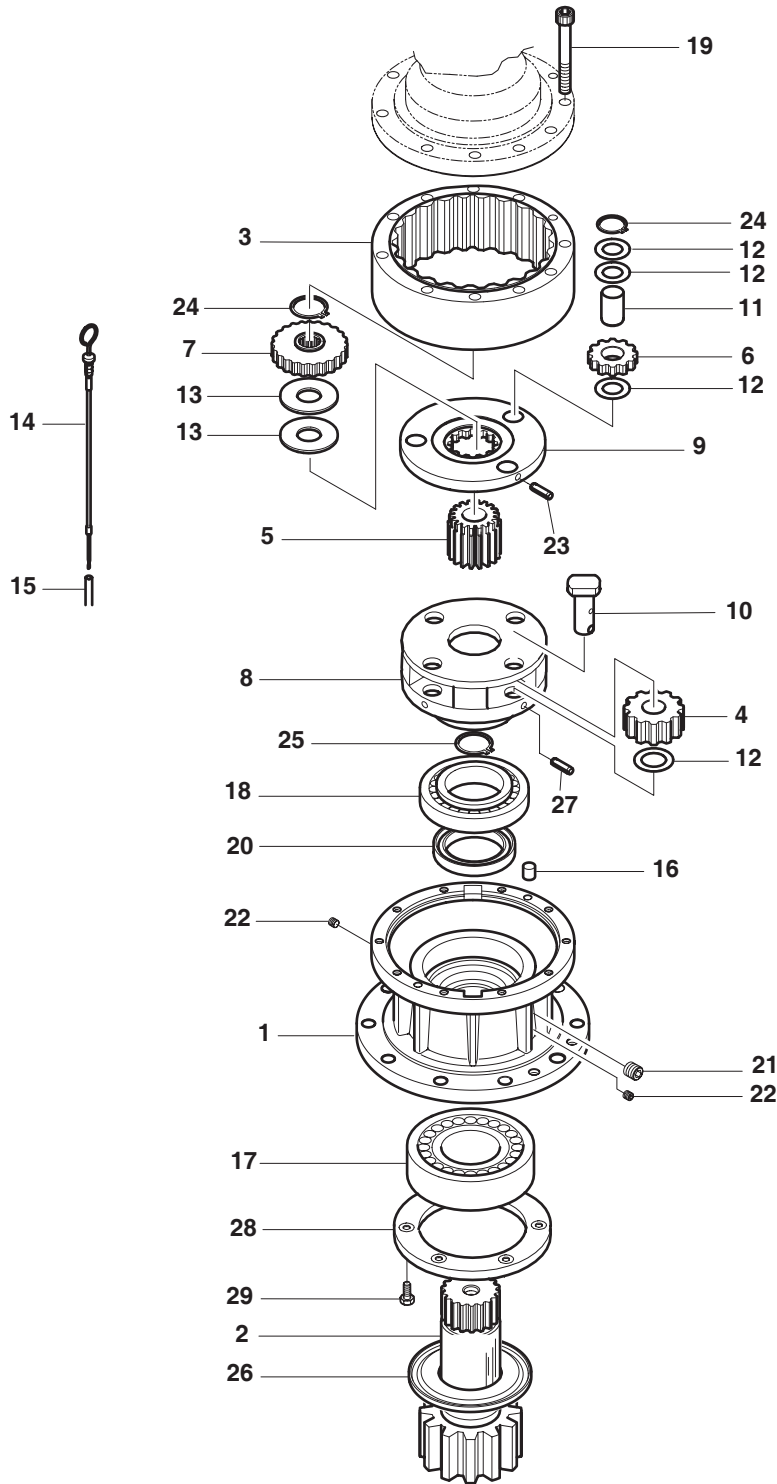


Figure 1

FG005349

Reference Number	Description
1	Casing
2	Driveshaft
3	Ring Gear
4	Planetary Gear
5	Sun Gear 2
6	Planetary Gear
7	Sun Gear 1
8	Carrier 2
9	Carrier 1
10	Pin Assembly
11	Pin Assembly
12	Adjustment Washer
13	Adjustment Washer
14	Level Bar
15	Level Gauge Piping

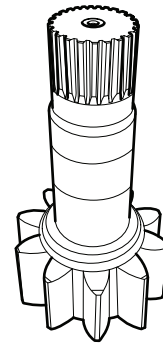
Reference Number	Description
16	Pin
17	Roller Bearing
18	Roller Bearing
19	Socket Bolt
20	Oil Seal
21	Plug
22	Plug
23	Spring Pin
24	Retaining Ring
25	Retaining Ring
26	Ring
27	Spring Pin
28	Support Plate
29	Screw Bolt

SHRINKAGE FITTING OF SHAFT AND FLEXIBLE BEARING

1. Washing of shaft

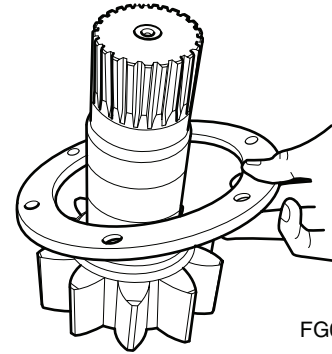
Remove fluids like anticorrosive fluid applied to the shaft and use an air conditioner to remove foreign substances.

2. Insert the support plate and the NILOS ring into the prepared shaft as shown in the figure and heat bearings (#22314, 2109-1041) on the heater.



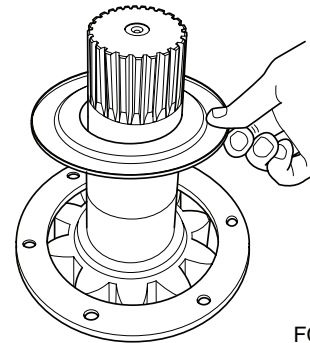
FG005350

Figure 2



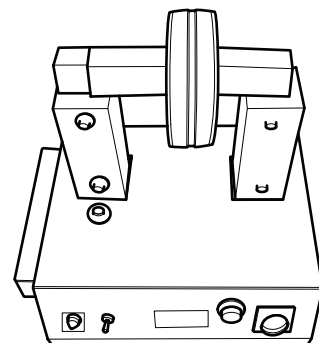
FG005351

Figure 3



FG005352

Figure 4



FG005353

Figure 5

Buy Now



Our support email:

ebooklibonline@outlook.com