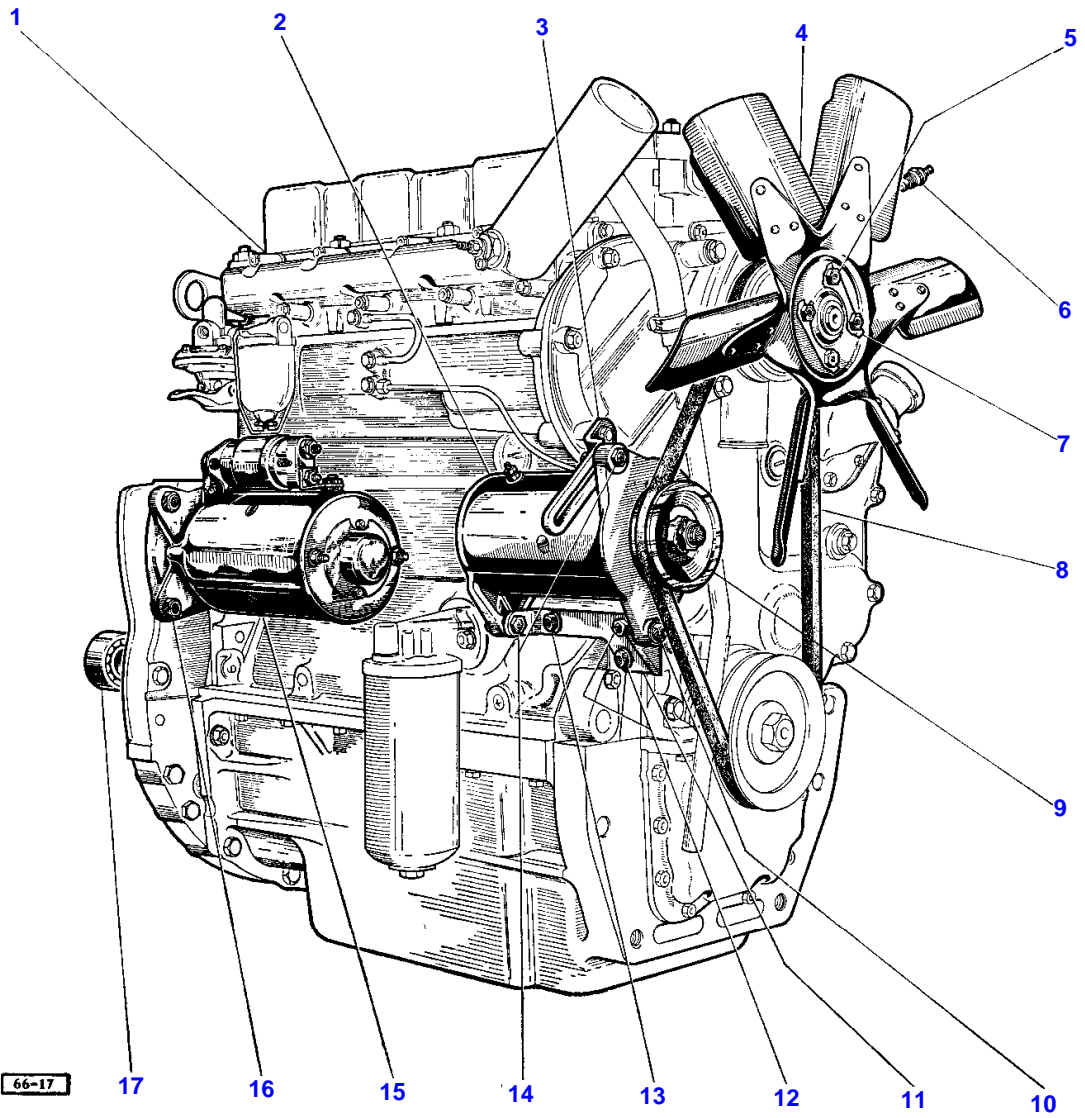


Page Title	Page Number
ENGINE INSTALLATION	3
GENERATOR - DUCELLIER 960023M1	4
GENERATOR - PARIS-RHONE G.10 - C.20, 960022M1	7
GENERATOR - C 40 A - 22703 A/B LUCAS, 897104M91	8
STARTER - DUCELLIER 968856M1	11
STARTER - PARIS-RHONE 968296M1	12
ELECTRICAL EQUIPMENT - BOARD BATTERY	14
FUEL SYSTEM	17
TANK	18
LUBRICATING OIL FILTER - A	21
LUBRICATING OIL FILTER - A	21A
FILTER SECONDARY	22
AIR CLEANER	25
DUAL CLUTCH	29
TRANSMISSION CASE - S.N.D.M.Y., S.N.D.M.W.Y., C.N.D.M.Y., C.N.D.M.W.Y.	30
TRANSMISSION GEAR LEVER	33
GEAR BOX - S.N.D.M.Y., C.N.D.M.Y.	34
GEAR BOX - S.N.D.M.W.Y., C.N.D.M.W.Y.	38
PUMP, CONTROL-VALVE, PIPE - S.N.D.M.W.Y., C.N.D.M.W.Y.	45
MULTIPOWER LEVER	49
P.T.O. SHIFTER MECHANISM	50
CENTRE AXLE HOUSING	53
DIFFERENTIAL	54
DIFFERENTIAL LOCK ASSEMBLY	57
REAR AXLE-HOUSING	58
BRAKES	62
BRAKE - GERMANY	65
HANDBRAKE - GERMANY	66
BRAKE RODS, PEDALS AND RELATED PARTS	69
WHEELS	73
FRONT AXLE AND TELESCOPIC TIE RODS	74
DRAG LINK AND SUPPORT	81
STEERING	82
POWER STEERING	86
PUMP - POWER STEERING	90
TANK - POWER STEERING	93
HYDRAULICS - POWER STEERING	94
HOOD	98
GRILL	102
RADIATOR	106
INSTRUMENT PANEL AND INSTRUMENTS	109
EXHAUST AND FOOT-REST	110
SEAT	113
SEAT	114
SUSPENSION	117
FENDER	118
THROTTLE CONTROLS	121
THROTTLE CONTROLS - A	125
SPEED LIMITATION	129
LIGHTING EQUIPMENT	130
HEAD LAMPS AND TAIL LAMPS	134
LIGHTING EQUIPMENT	138
HEAD LAMPS AND TAIL LAMP	145

TABLE OF CONTENT

HYDRAULIC LIFT COVER	149
LIFT ARMS	153
RESPONSE CONTROLS - PRESSURE CONTROL	157
HYDRAULIC PUMP - STANDARD	161
DRAFT CONTROL	165
LINKAGE	169
LIFT LINKAGE	173
LINKAGE - HEAVY DUTY CATS. I AND II	175B
LINKAGE - HEAVY DUTY CATS. I AND II	175F
DRAWBAR AND STAYS	175G
MISCELLANEOUS	176
HANDBRAKE	183
HITCH	184
MOUNTING FRAME AND FRONT WEIGHTS	187
PRESSURE CONTROL HITCH - S.N.M.Y.	188
SINGLE SPOOL VALVE	191
TWO SPOOL VALVE	195
VALVE	199
HOSES AND COUPLINGS	200
SWITCH VALVE	203
STABILIZERS	204
WEIGHTS ON WHEELS	207
JACK ASSEMBLY	208
GUARD-PTO	211
P.T.O. DRIVE AND PULLEY	212

**MOTEUR ET ACCESSOIRES
ENGINE INSTALLATION
MOTOR UND ZUBEHOER
MOTORE ED ACCESSORI**



ENGINE INSTALLATION

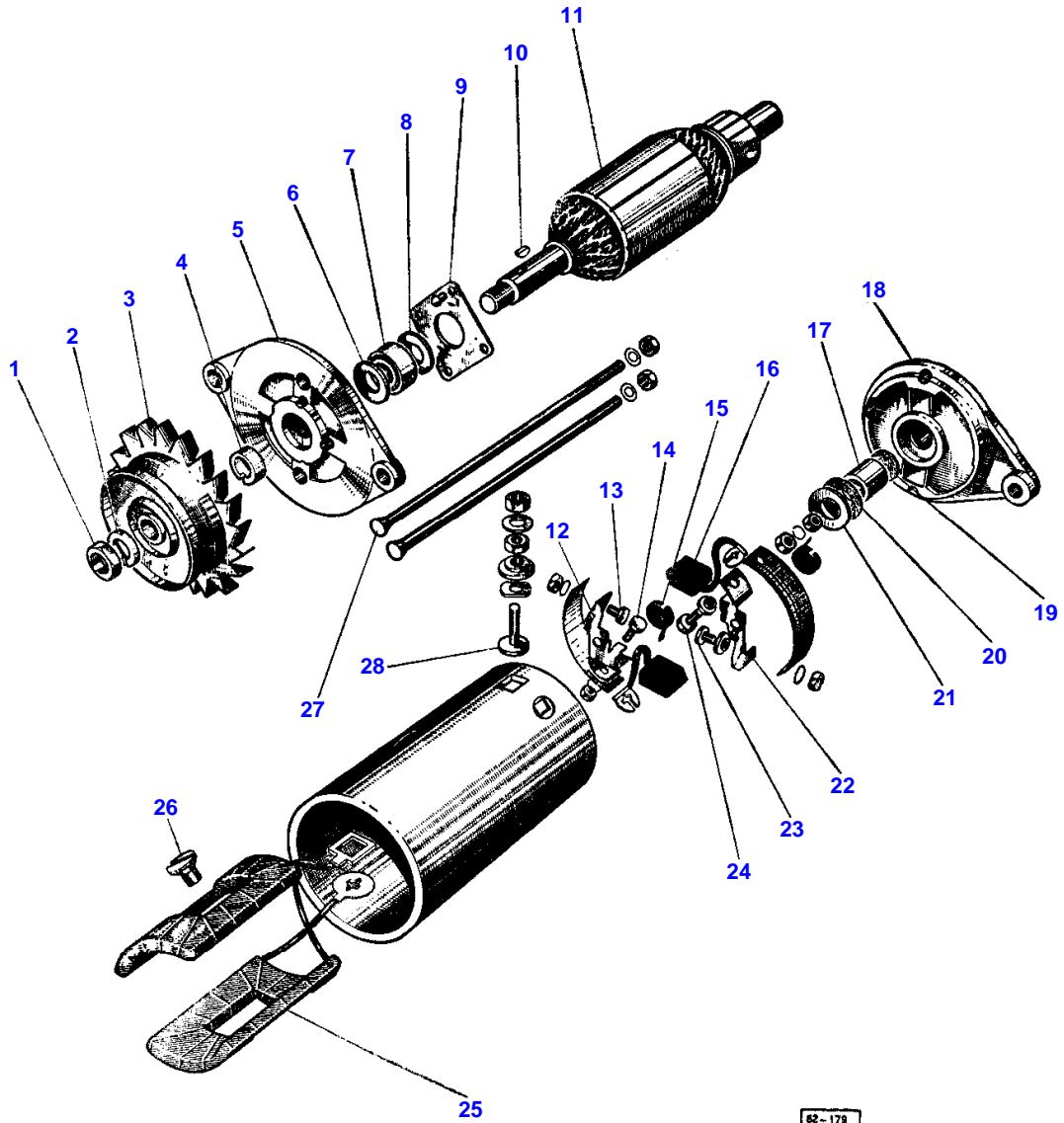
Item	Part Number	Qty	Description	Comments
1	962179M1	1	Engine	INCL. REF. 2, 3, 8 TO 13
	962330M2	1	Engine	(D)
2	960022M1	1	Dynamo	(A-E)
	960023M1	1	Dynamo	(A-F)
	897104M91	1	Dynamo	(G-H)
3	962183M1	1	Lever	
	353755X1	1	Washer	
4	960728M1	1	Fan	(C)
5	353516X1	4	Screw Unf	
6	969606M2	1	Bulb	
7	731398M1	2	Plate	
8	962184M1	1	Belt	
9	960028M1	1	Pulley	(B)
10	353521X1	2	Bolt Unf	
	1650484M1	2	Washer	
	353916X1	2	Nut Unf	
11	962182M1	1	Bearer	
12	353679X1	2	Screw Unc	
	375703X1	2	Washer	
	1650484M1	2	Washer	
13	353518X1	1	Screw Unf	
	375703X1	1	Washer	
	1550484M1	1	Washer	
14	353521X1	1	Bolt Unf	(A)
	353677X1	1	Screw Unc	(A)
	353755X1	1	Washer	
	1650484M1	1	Washer	
	353916X1	1	Nut Unf	
15	968296M1	1	Startermotor	(A-E)
	968856M1	1	Startermotor	(A-F)
	897336M1	1	Startermotor	
	898090M1	1	Startermotor	(H)
16	361773X1	1	Screw	
	362501X1	2	Screw	
	376721X1	3	Washer	
	363625X1	1	Nut	
17	828123M1	1	Bearing Assy	
18	962668M1	1	Protector	

(A)
Alternative
(B)
GERMANY
(C)
Repairs and replaces 731397M91
(D)
WITH SPEED LIMITER
(E)
PARIS-RHONE
(F)
DUCCELLIER
(G)
C.A.V.
(H)
LUCAS

4

DYNAMO
DYNAMO
LICHTMASCHINE
DINAMO

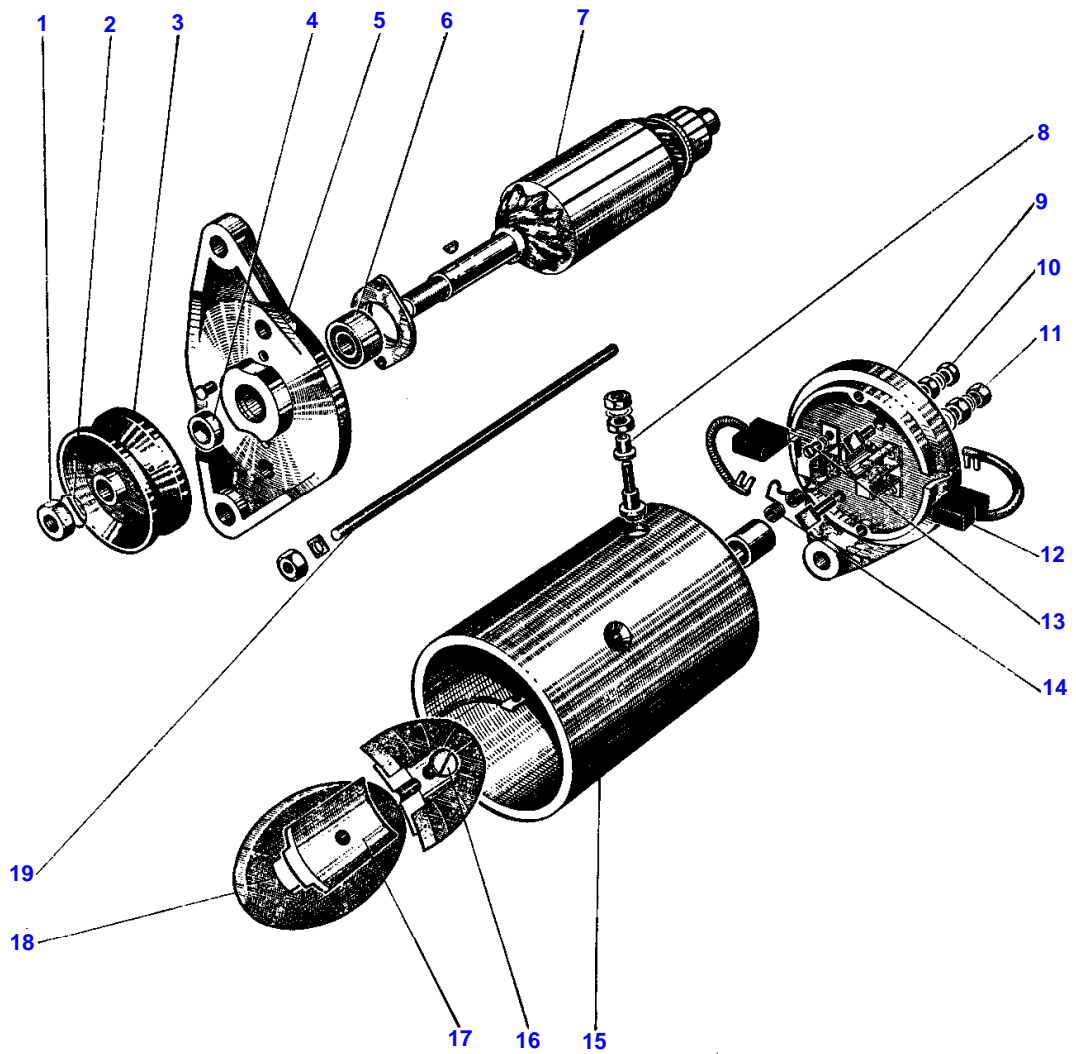
} DUCELLIER 960 023 M1



MASSEY FERGUSON**MF 165 TRACTOR, ->| (FR) - 957184****957184****GENERATOR - DUCELLIER 960023M1****4**

Item	Part Number	Qty	Description	Comments
1	1802975M1	1	Parts Pack	DUCELLIER 960023M1
2		1	Washer	INCL. REF. 2, 4, 10
3	1802973M1	1	Pulley	
4		1	Spacer	
5	1802950M91	1	Bearing Carrier	INC. REF. 6, 7, 8, 9
6		1	Washer	
7	1802922M1	1	Bearing	
8		1	Washer	
9	1802951M1	1	Parts Pack	INCL. REF. 6 AND 8
10		1	Key	
11	1802767M1	1	Armature	
12	1802869M91	1	Support	
13		1	Parts Pack	
14		1	Parts Pack	
15	1802777M1	2	Spring	
16	1802880M1	1	Brush	
17	1802775M1	1	Bush	
18	1802972M91	1	Bracket	
	1802976M1	1	Nipple	
19	1802974M1	1	Parts Pack	INCL. REF. 20, 21
20		1	Washer	
21		1	Washer	
22	1802773M91	1	Parts Pack	
24	1802927M1	1	Parts Pack	
25	1802768M1	1	Coil	
26	1801422M1	2	Screw	
27	1802872M1	1	Parts Pack	
28	1802776M1	1	Terminal	

DYNAMO }
DYNAMO } PARIS-RHÔNE G. 10 - C. 20
LICHTMASCHINE } 960 022 M1
DINAMO }



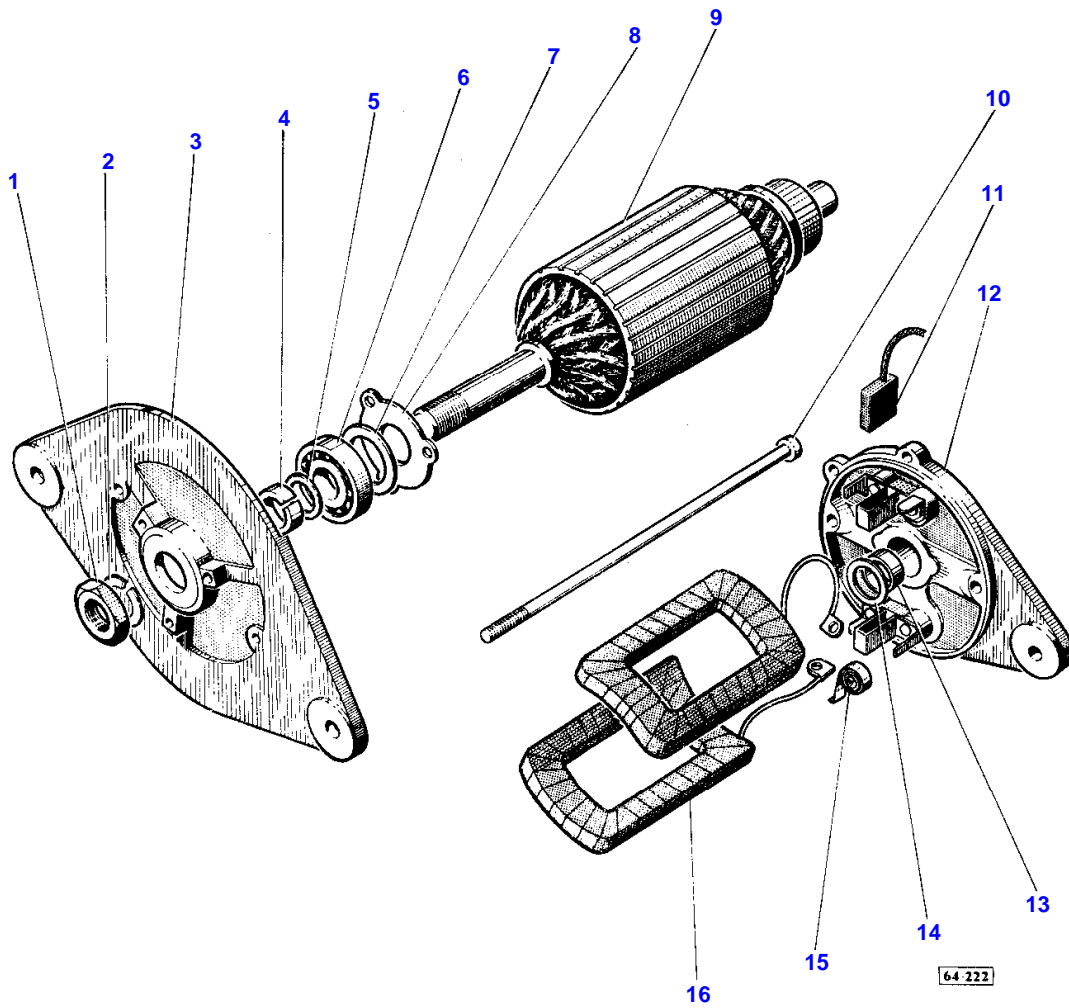
62 - 183

MASSEY FERGUSON**MF 165 TRACTOR, ->| (FR) - 957184****957184****GENERATOR - PARIS-RHONE G.10 - C.20, 960022M1****7**

Item	Part Number	Qty	Description	Comments
				PARIS-RHONE G.10 - C.20, 960022M1
1	1802717M1	1	Parts Pack	INCL. REF. 2, 4
2		1	Washer	
3	1802971M1	1	Pulley	
4		1	Spacer	
5	1802706M91	1	Bearing Carrier	INCL. REF. 6
6	175047M1	1	Bearing	
7	1802711M1	1	Armature	
8	1802707M1	1	Connection	
9	1802701M1	1	Bracket	INCL. REF. 10, 11, 14
	1802970M1	1	Greaser	
10	1802705M1	1	Connection	
11	1802704M1	1	Connection	
12	1802708M1	2	Brush	
	1802969M1	2	Clevis	
13	1802709M1	1	Screw	
14	1802703M1	2	Spring	
15	1802715M1	1	Cylinder Head	
16	1802713M1	2	Screw	
17	1802712M1	2	Weight	
18	1802710M1	2	Inductor	
19	1802714M1	2	Stem	

8

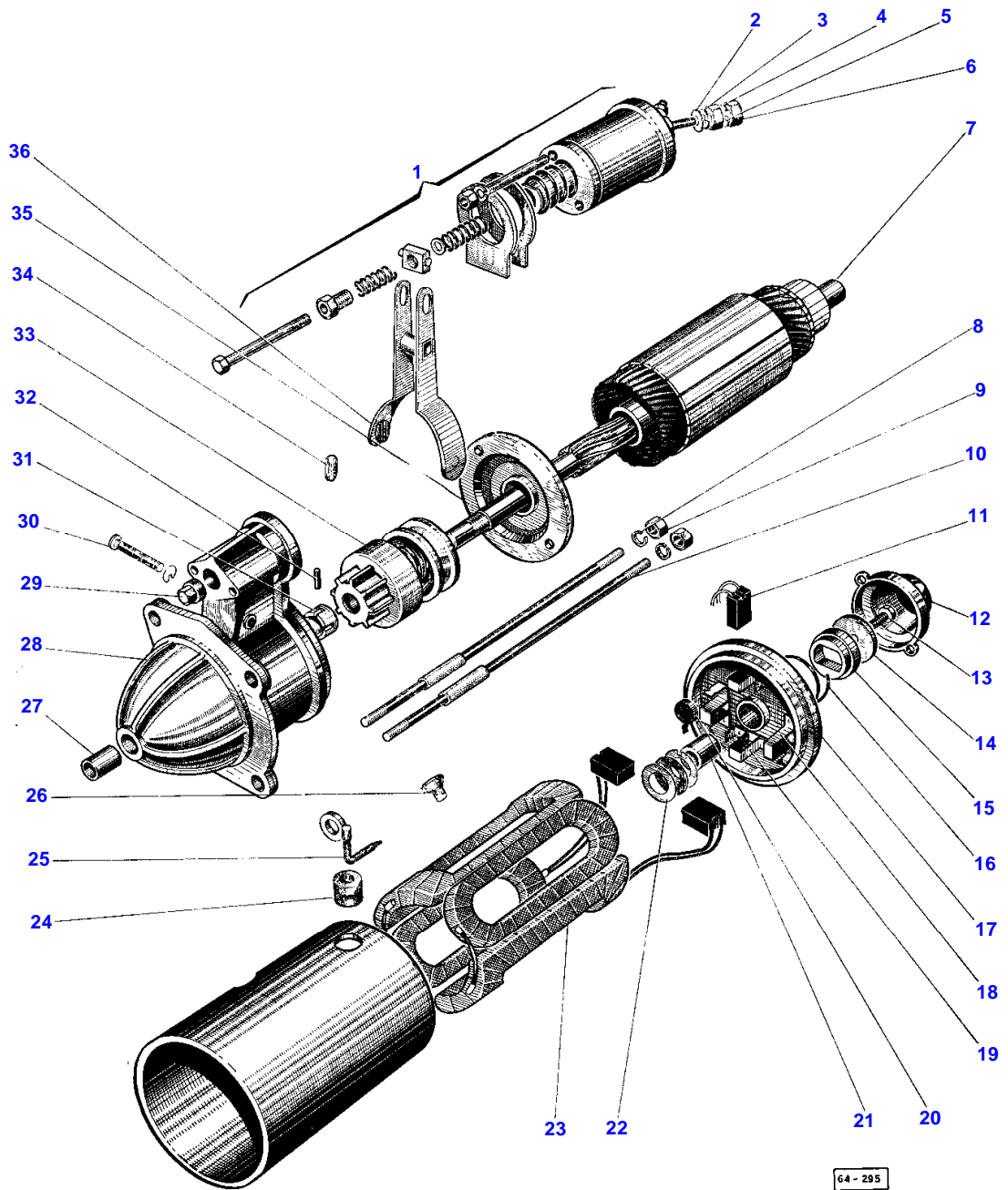
DYNAMO }
DYNAMO } C 40 A - 22 703 A/B "LUCAS"
LICHTMASCHINE }
DINAMO } 897 104 M91



MASSEY FERGUSON**MF 165 TRACTOR, ->| (FR) - 957184****957184****GENERATOR - C 40 A - 22703 A/B "LUCAS", 897104M91****8**

Item	Part Number	Qty	Description	Comments
				C 40 A - 22703 A/B "LUCAS", 897104M91
1	198800	1	Nut	
2	185085	1	Washer	
3	54211096	1	Bracket	INCL. REF. 7, 8
4	227532	1	Bush	
5	227631	1	Washer	
6	189237	1	Bearing	
7	158730	1	Washer	
8	229400	1	Plate	
9	227987	1	Armature	
10	228336	2	Bolt	
11	227541B	2	Brush	
12	54211099	1	Bracket	INCL. 54211097 AND REF. 13
	54211097	1	Bearing	
13	227818	1	Bearing	
14	164736	1	Washer	
15	227542	2	Spring	
16	227543	2	Coil	INCL. 54211890
	54211890	2	Terminal	NOT ILLUSTRATED
	54211894	1	Parts Pack	

**DÉMARREUR
STARTER
ANLASSER
MOTORINO** } **DUCELLIER
968 856 M1**



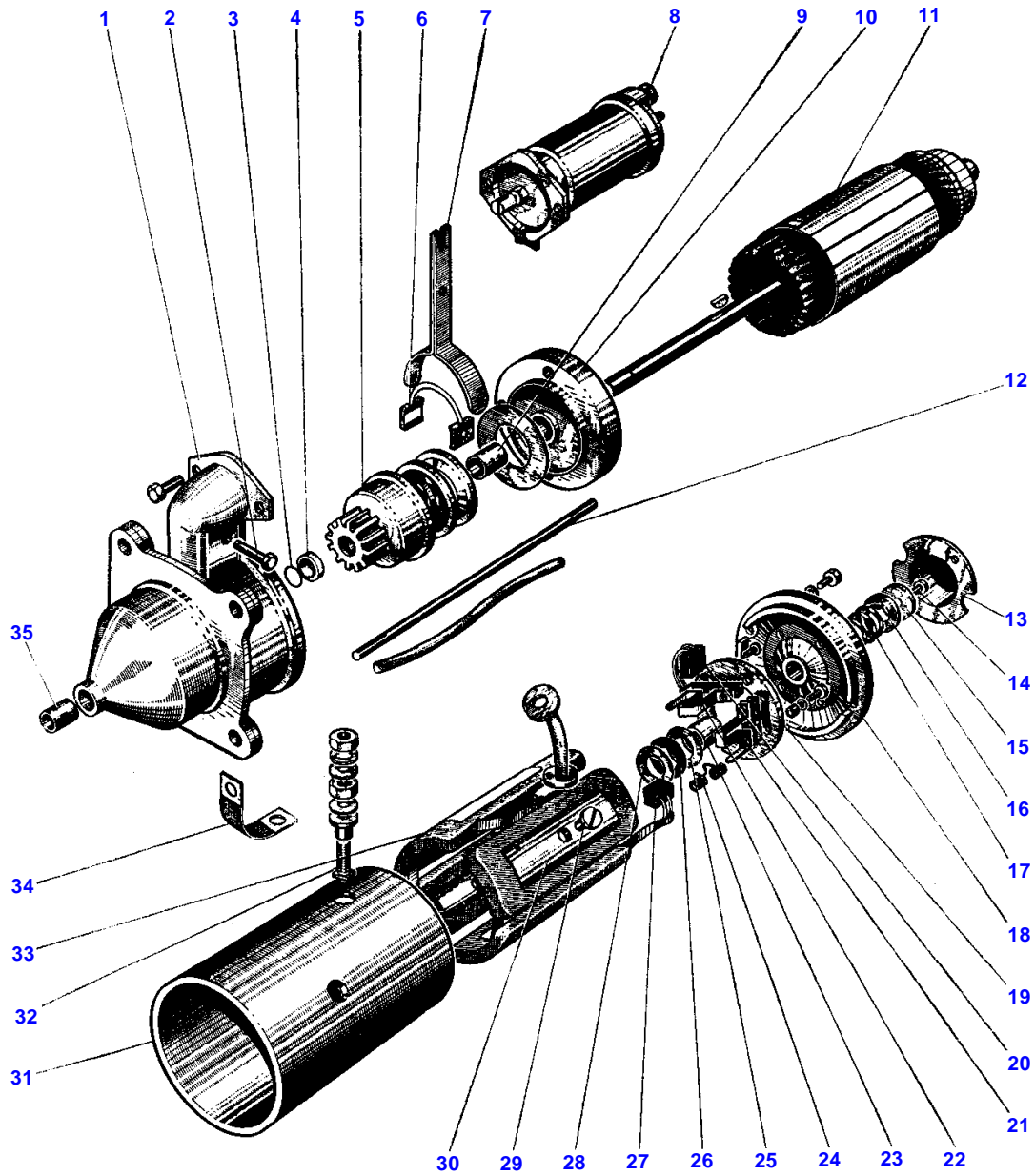
64 - 295

MASSEY FERGUSON**MF 165 TRACTOR, ->| (FR) - 957184****957184****STARTER - DUCELLIER 968856M1****11**

Item	Part Number	Qty	Description	Comments
				DUCELLIER 968856M1
1	1802750M1	1	Solenoid	
2	1802809M1	1	Terminal	INCL. REF. 3 TO 6
3		1	Washer	
4		1	Nut	
5		1	Washer	
6		1	Nut	
7	1802745M1	1	Field Coil Assy.	
8		2	Washer	
9		2	Nut	
10	1802749M1	1	Bolt	INCL. REF. 8, 9
12	1802762M1	1	Bonnet	
13		1	Bolt	
14	1802764M1	1	Disc	INCL. REF. 13
15	1802765M1	1	Pad	
16	1802800M1	1	Spring	
17	1802873M91	1	Bearing	INCL. REF. 18 TO 21
18	1802761M1	2	Holder	
19	1802765M1	2	Holder	
20	1801627M1	4	Spring	
21	1801625M1	1	Bush	
22	1802763M1	1	Washer	
23	1802746M1	1	Field Coil Assy.	
24	1802766M1	1	Grommet	
25	1802748M1	1	Connection	
26	1801422M1	1	Bolt	
27	1600173M1	1	Bush	
28	1802874M91	1	Bearing	INCL. REF. 27
	1801794M1	1	Plug	
30	1802754M1	1	Pivot	
31	1807807M1	1	Thruster	
32	1801806M1	1	Dowel	
33	1802877M91	1	Pinion	
34	1801823M1	2	Skid	
35	1802758M1	1	Bearing Carrier	
36	1802755M91	1	Fork	

12

DÉMARREUR
STARTER
ANLASSER
MOTORINO } **PARIS-RHÔNE**
968 296 M1



Imprimé en France

TRACTEUR 165

957 184 M2 - Emission 1 - II/66

Item	Part Number	Qty	Description	Comments
				PARIS-RHONE 968296M1
1	1802488M91	1	Bearer	INCL. REF. 35
2	1601873M1	1	Dowel	
3	1601870M1	1	Ring	
4	1601869M1	1	Washer	
5	1802487M1	1	Thrower	
6	1600467M1	1	Skid	
7	1601859M91	1	Fork	INCL. REF. 6
8	1801878M91	1	Solenoid	
	1801879M1	1	Coil	
	1801880M1	1	Bonnet	
9	1802147M1	1	Bearing	
10	1802146M91	1	Bearing Carrier	
11	1802144M1	1	Armature	
12	1802145M1	2	Bolt	
13	1601872M1	1	Bonnet	
14	1601868M1	1	Screw	
15	1601867M1	1	Washer	
16	1601866M1	1	Washer	
17	1601865M1	1	Spring	
18	1802134M91	1	Bearing Carrier	INCL. REF. 19, 23, 24
19	1802135M91	1	Washer	INCL. REF. 21, 22, 24
20	1802143M1	2	Brush	
21		2	Brush	
22		2	Brush	
23	1601044M1	1	Bush	
24	1601566M1	4	Spring	
25	1802139M1	1	Washer	
26	1601863M1	1	Washer	
27	1801439M1	2	Brush	
28	1601862M2	1	Washer	
29	1601329M1	4	Bolt	
30	1802137M1	4	Weight	
31	1802492M1	1	Cylinder Head	
32	1802141M1	1	Connection	
33	1802136M1	1	Inductor	
34	1802142M1	1	Union	
35	1601358M1	1	Brush	

Buy Now



Our support email:

ebooklibonline@outlook.com